

## Inspection Photos

Location Name: TEP Rocky Mountain LLC RMV 229-27 Pad

Location # 324124



Photo # 8163 From entrance to location



Photo # 8164 From entrance to location

## Inspection Photos

Location Name: TEP Rocky Mountain LLC RMV 229-27 Pad

Location # 324124



Photo # 8165 Location



Photo # 8166 Location



**COLORADO**  
Oil & Gas Conservation  
Commission  
Department of Natural Resources



## Inspection Photos

Location Name: TEP Rocky Mountain LLC RMV 229-27 Pad

Location # 324124



Photo # 8167 Location

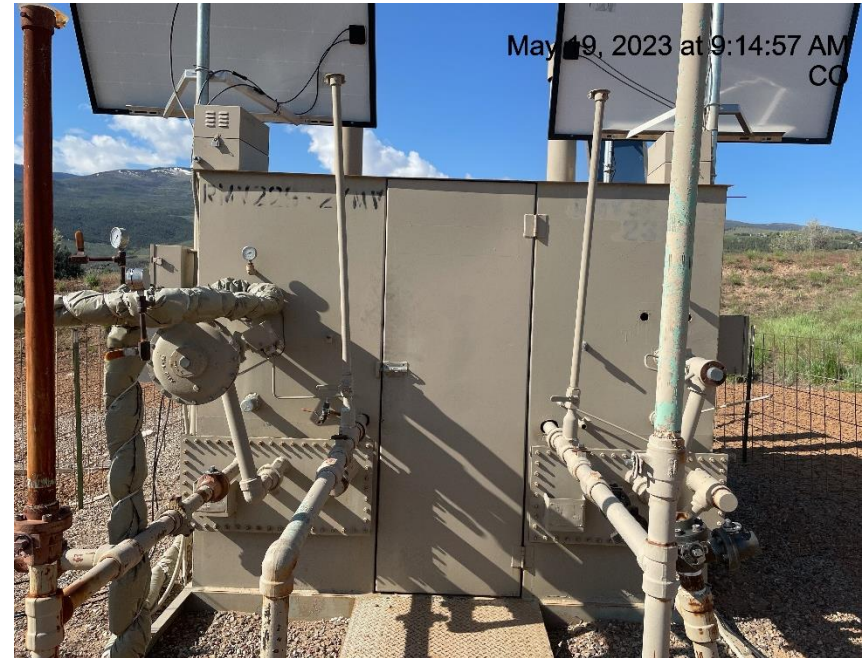


Photo # 8185 Meter calibration info not conspicuously posted



**COLORADO**  
Oil & Gas Conservation  
Commission  
Department of Natural Resources



## Inspection Photos

Location Name: TEP Rocky Mountain LLC RMV 229-27 Pad

Location # 324124



**Photo # 8173 Containment liner needs maintenance**



**Photo # 8174 Containment liner needs maintenance**



**COLORADO**  
Oil & Gas Conservation  
Commission  
Department of Natural Resources

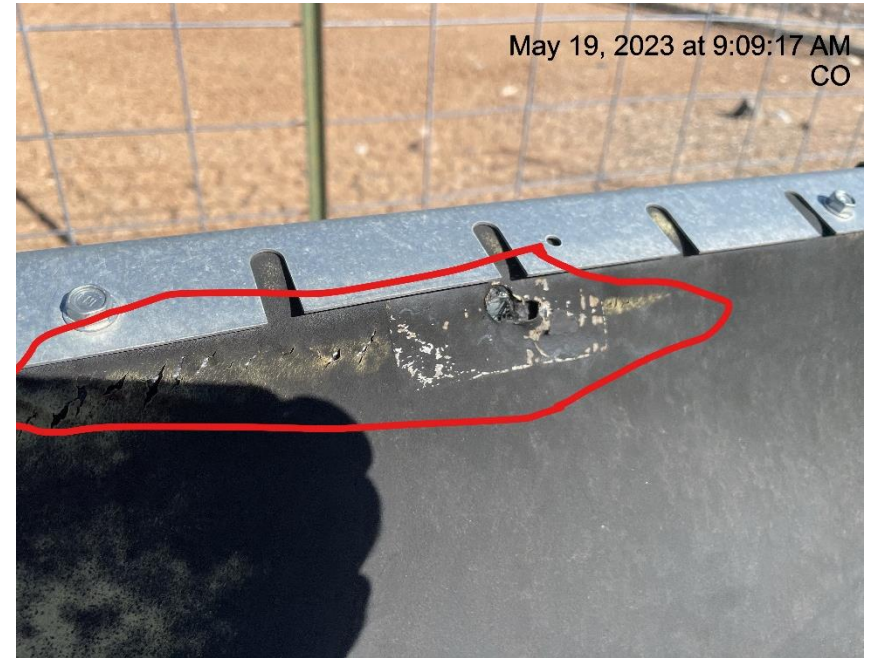
## Inspection Photos

Location Name: TEP Rocky Mountain LLC RMV 229-27 Pad

Location # 324124



**Photo # 8181 Containment liner needs maintenance**



**Photo # 8176 Containment liner needs maintenance**





## Inspection Photos

Location Name: TEP Rocky Mountain LLC RMV 229-27 Pad

Location # 324124



Photo # 8177 Containment liner needs maintenance



Photo # 8178 Containment liner needs maintenance



## Inspection Photos

Location Name: TEP Rocky Mountain LLC RMV 229-27 Pad

Location # 324124



Photo # 8179 Containment liner needs maintenance



Photo # 8180 Containment liner needs maintenance