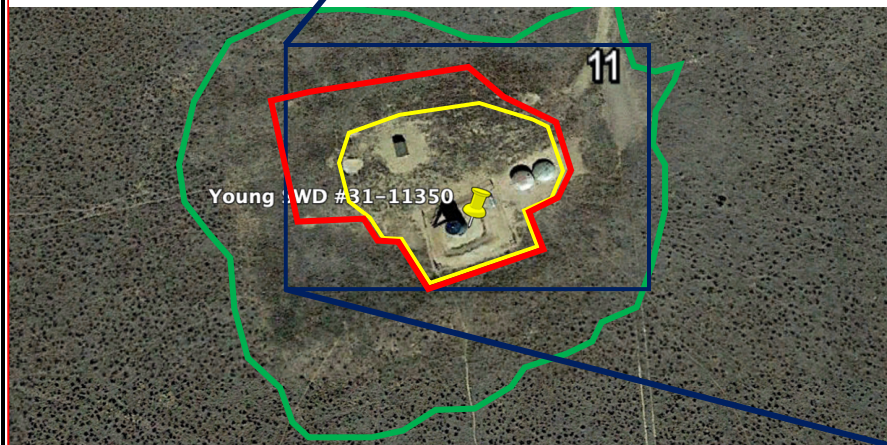


ORIGINAL DISTURBANCE



DISTURBANCE OVERLAY



Legend

Interim Reclamation Boundary to Date

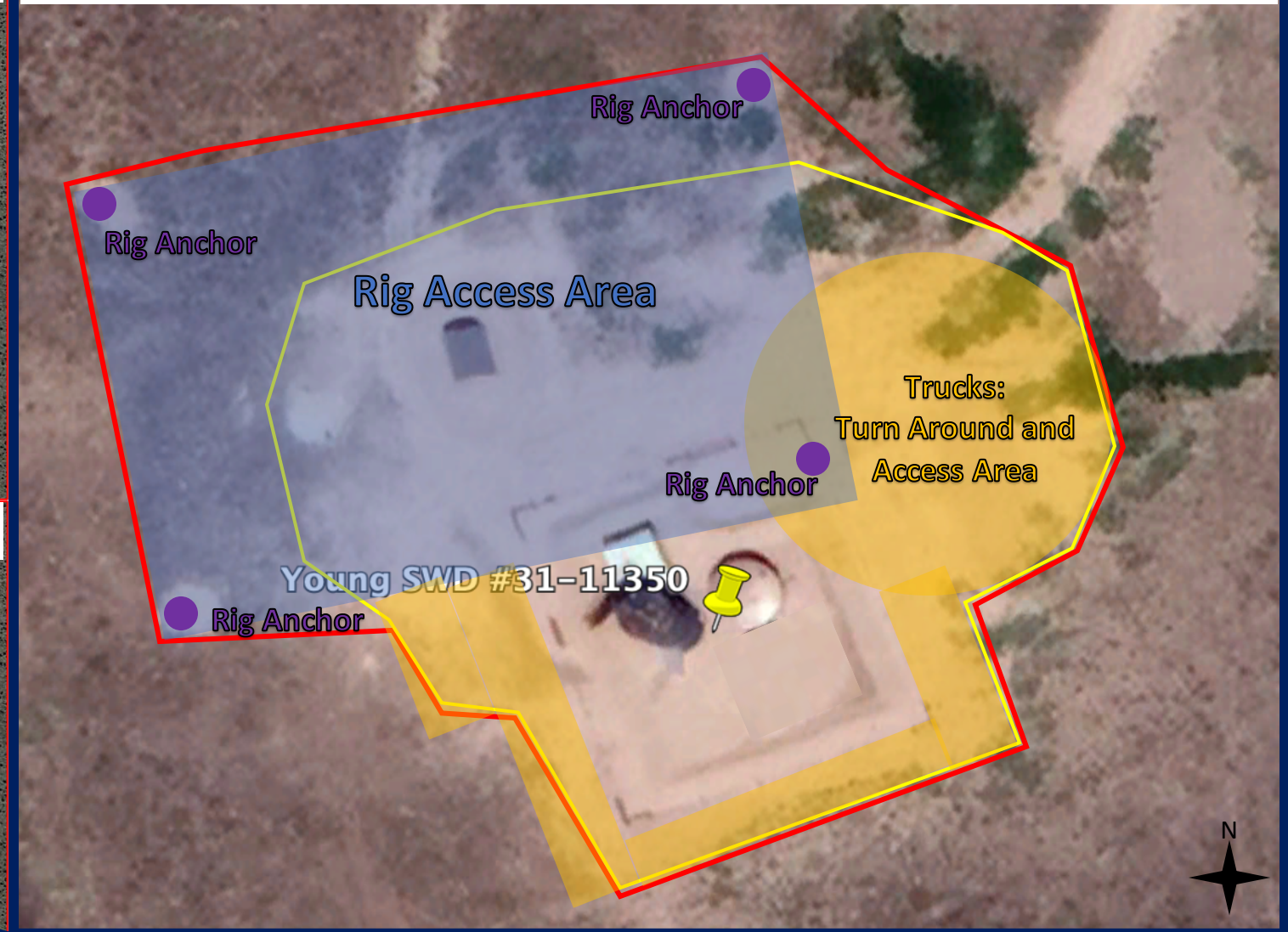
- 0.5 acres without Access Road and Inside Anchors
- 0.7 acres without Access Road and Including Anchors


Original Disturbance Boundary - 03/2006 Aerial Imagery used to determine

- 2.5 acres without Access Road

*Diagram is Approximate

CURRENT DISTURBANCE



Revision	Date	St. Croix Operating, Inc. - 81490	
 P.O. Box 2169 Loveland, CO 80539 (970) 669-7411 www.petersonenergyoperating.com		Young SWD #31-11350 Interim Reclamation Map Site Aerial Interim Reclamation Map NWNE Section 11, Township 3S, Range 50W Washington County, Colorado	
DESIGNED BY: Peterson Energy Operating		SCALE:	
DATE DRAWN: 05/10/2023		DRAWN BY: RD	