

Project: Garfield County, CO  
 Site: BJU B26 496 Pad  
 Well: BJU B26 FED 13D-26 496  
 Wellbore: Wellbore #1  
 Design: Design #2  
 Latitude: 39.677138  
 Longitude: -108.137769  
 Ground Level: 8211.0  
 RKB @ 8241.0usft (30')

PROJECT DETAILS: Garfield County, CO  
 Geodetic System: Universal Transverse Mercator (US Survey Feet)  
 Datum: NAD 1927 - Western US  
 Ellipsoid: Clarke 1866  
 Zone: Zone 12N (114 W to 108 W)  
 System Datum: Mean Sea Level

REFERENCE INFORMATION  
 Vertical (TVD) Reference: RKB @ 8241.0usft (30')  
 Section (VS) Reference: Slot - 13D-26(0.0N, 0.0E)  
 Measured Depth Reference: RKB @ 8241.0usft (30')  
 Calculation Method: Minimum Curvature

#### FORMATION TOP DETAILS

TVDPath	MDPath	Formation
3317.0	3384.6	Wasatch
5717.0	5843.9	Wasatch G
5764.0	5892.1	Top Injection Zone
6017.0	6151.3	Fort Union
6207.0	6346.0	Top Influx Sand
6298.0	6439.3	Bot Influx Sand
7798.0	7975.1	Bot Injection Zone
8064.0	8242.0	Ohio Creek / TOG
8311.0	8489.0	Williams Fork
11214.0	11393.0	Cameo
11714.0	11893.2	Rollins

#### SECTION DETAILS

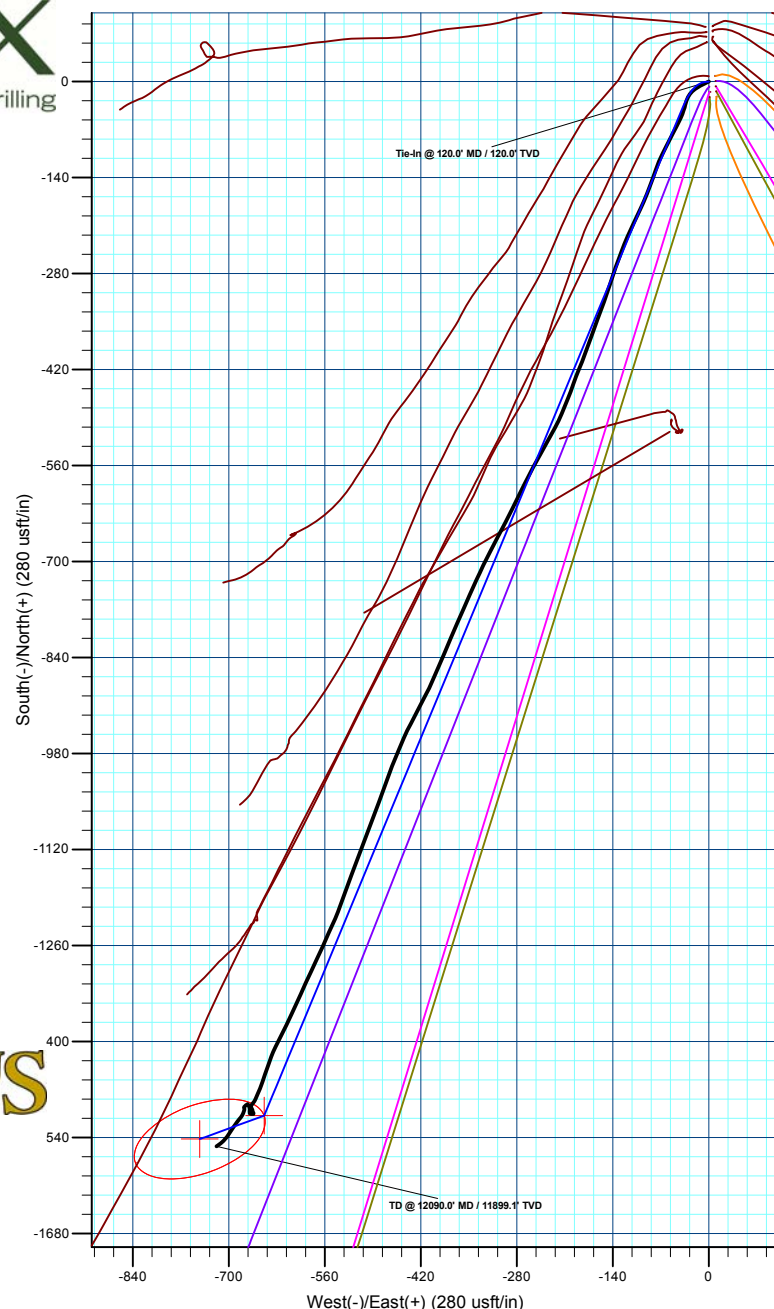
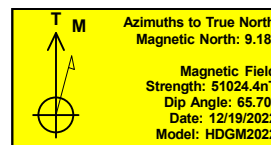
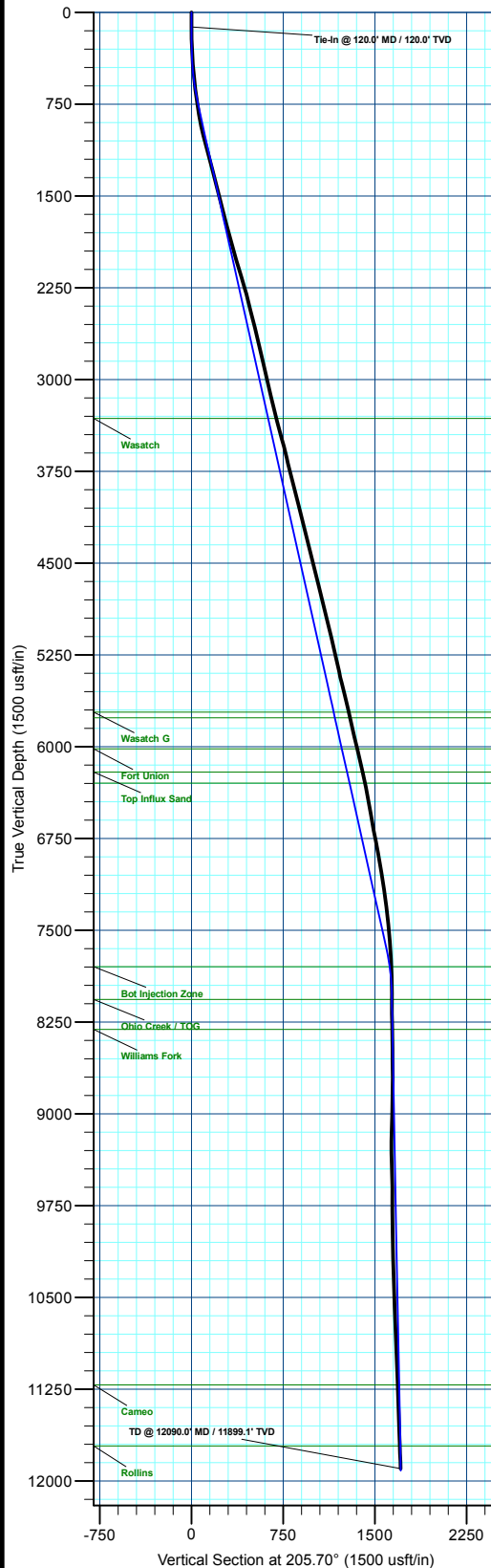
MD	Inc	Azi	TVD	+N/-S	+E/-W	Dleg	TFace	Vsect	Annotation
120.0	0.08	299.55	120.0	-0.1	0.1	0.00	0.00	0.1	Conductor Tie in
151.3	1.00	260.00	151.3	-0.2	-0.2	3.00	-42.66	0.2	EOB @ 1.00° Inc. / 260.00° Azm
260.0	1.00	260.00	260.0	-0.5	-2.1	0.00	0.00	1.3	Build 3° / 100'
393.4	5.00	260.00	393.1	-1.7	-8.9	3.00	0.00	5.4	EOB @ 5.00° Inc. / 260.00° Azm / Build 3° / 100'
752.0	12.60	202.54	747.8	-40.7	-39.4	3.00	-80.17	53.7	EOB @ 12.60° Inc. / 202.54° Azm
7821.8	0.00	0.00	7821.8	-1465.6	-630.8	0.00	0.00	1594.1	Drop 3° / 100'
8242.0	0.00	0.00	8064.0	-1508.1	-648.4	3.00	180.00	1640.1	EOD @ Vertical / Build 1.5° / 100'
8342.5	1.51	250.00	8164.5	-1508.5	-649.7	1.50	250.00	1641.0	EOB @ 1.51° Inc. / 250.00° Azm
12093.3	1.51	250.00	11914.0	-1542.3	-742.4	0.00	0.00	1711.7	TD @ 12093.3' MD / 11914.0' TVD

#### DESIGN TARGET DETAILS

Name	TVD	+N/-S	+E/-W	Northing	Easting	Latitude	Longitude
13D-26 - OHCR	8064.0	-1508.1	-648.4	14419804.79	2445233.13	39.672999	-108.140072
13D-26 - PBHL	11914.0	-1542.3	-742.4	14419767.60	2445140.30	39.672905	-108.140405

#### WELL DETAILS: BJU B26 FED 13D-26 496

+N/-S	+E/-W	Ground Level : 8211.0	Latitude	Longitude
0.0	0.0	Northing 14421332.80	39.677138	-108.137769
		Easting 2445833.10		13D-26



Plan: Design #2 (BJU B26 FED 13D-26 496/Wellbore #1)

Created By: Will Jircik Date: 15:24, December 27 2022



## **Caerus Oil & Gas**

**Garfield County, CO**

**BJU B26 496 Pad**

**BJU B26 FED 13D-26 496 - Slot 13D-26**

**Wellbore #1**

**Design: Wellbore #1**

## **KLX Survey Report**

**27 December, 2022**



<b>Company:</b>	Caerus Oil & Gas	<b>Local Co-ordinate Reference:</b>	Well BJU B26 FED 13D-26 496 - Slot 13D-26
<b>Project:</b>	Garfield County, CO	<b>TVD Reference:</b>	RKB @ 8241.0usft (30')
<b>Site:</b>	BJU B26 496 Pad	<b>MD Reference:</b>	RKB @ 8241.0usft (30')
<b>Well:</b>	BJU B26 FED 13D-26 496	<b>North Reference:</b>	True
<b>Wellbore:</b>	Wellbore #1	<b>Survey Calculation Method:</b>	Minimum Curvature
<b>Design:</b>	Wellbore #1	<b>Database:</b>	EDM 5000.1 Single User Db

<b>Project</b>	Garfield County, CO		
<b>Map System:</b>	Universal Transverse Mercator (US Survey Feet)	<b>System Datum:</b>	Mean Sea Level
<b>Geo Datum:</b>	NAD 1927 - Western US		
<b>Map Zone:</b>	Zone 12N (114 W to 108 W)		

Site		BJU B26 496 Pad							
Site Position:		Northing:	14,421,469.70	usft	Latitude:	39.677515			
From:	Map	Easting:	2,445,821.30	usft	Longitude:	-108.137796			
Position Uncertainty:		0.0	usft	Slot Radius:	13-3/16	"	Grid Convergence:	1.83	°

Well	BJU B26 FED 13D-26 496 - Slot 13D-26					
Well Position	+N/-S	0.0 usft	Northing:	14,421,332.80 usft	Latitude:	39.677138
	+E/-W	0.0 usft	Easting:	2,445,833.10 usft	Longitude:	-108.137769
Position Uncertainty		0.0 usft	Wellhead Elevation:	usft	Ground Level:	8,211.0 usft

<b>Wellbore</b>	Wellbore #1				
<b>Magnetics</b>	<b>Model Name</b>	<b>Sample Date</b>	<b>Declination (°)</b>	<b>Dip Angle (°)</b>	<b>Field Strength (nT)</b>
	HDGM2022	12/19/2022	9.18	65.70	51,024.40000000

<b>Design</b>	Wellbore #1				
<b>Audit Notes:</b>					
<b>Version:</b>	1.0	<b>Phase:</b>	ACTUAL	<b>Tie On Depth:</b>	0.0
<b>Vertical Section:</b>	<b>Depth From (TVD) (usft)</b>	<b>+N/-S (usft)</b>	<b>+E/-W (usft)</b>	<b>Direction (°)</b>	
	0.0	0.0	0.0	204.81	

<b>Survey Program</b>	<b>Date</b>	12/27/2022			
<b>From (usft)</b>	<b>To (usft)</b>	<b>Survey (Wellbore)</b>	<b>Tool Name</b>	<b>Description</b>	
30.0	120.0	Sfc Gyro (Wellbore #1)	GYRO-NS	OWSG Gyrocompass Gyro	
422.0	12,090.0	KLX MWD (Wellbore #1)	MWD	OWSG MWD - Standard	

<b>Survey</b>										
<b>Measured Depth (usft)</b>	<b>Inclination (°)</b>	<b>Azimuth (°)</b>	<b>Vertical Depth (usft)</b>	<b>+N/-S (usft)</b>	<b>+E/-W (usft)</b>	<b>Vertical Section (usft)</b>	<b>Dogleg Rate (°/100usft)</b>	<b>Build Rate (°/100usft)</b>	<b>Turn Rate (°/100usft)</b>	
0.0	0.00	0.00	0.0	0.0	0.0	0.0	0.00	0.00	0.00	
30.0	0.00	0.00	30.0	0.0	0.0	0.0	0.00	0.00	0.00	
60.0	0.15	89.74	60.0	0.0	0.0	0.0	0.50	0.50	0.00	
90.0	0.25	164.12	90.0	-0.1	0.1	0.0	0.85	0.33	247.93	
<b>Tie-In @ 120.0' MD / 120.0' TVD</b>										
120.0	0.08	299.55	120.0	-0.1	0.1	0.1	1.04	-0.57	451.43	
422.0	5.80	243.10	421.5	-6.9	-13.7	12.0	1.91	1.89	-18.69	
511.0	6.60	230.50	510.0	-12.2	-21.7	20.2	1.77	0.90	-14.16	
606.0	6.20	214.80	604.4	-19.9	-28.8	30.1	1.88	-0.42	-16.53	
700.0	6.90	194.00	697.8	-29.5	-33.1	40.7	2.62	0.74	-22.13	

<b>Company:</b>	Caerus Oil & Gas	<b>Local Co-ordinate Reference:</b>	Well BJU B26 FED 13D-26 496 - Slot 13D-26
<b>Project:</b>	Garfield County, CO	<b>TVD Reference:</b>	RKB @ 8241.0usft (30')
<b>Site:</b>	BJU B26 496 Pad	<b>MD Reference:</b>	RKB @ 8241.0usft (30')
<b>Well:</b>	BJU B26 FED 13D-26 496	<b>North Reference:</b>	True
<b>Wellbore:</b>	Wellbore #1	<b>Survey Calculation Method:</b>	Minimum Curvature
<b>Design:</b>	Wellbore #1	<b>Database:</b>	EDM 5000.1 Single User Db

Survey									
Measured Depth (usft)	Inclination (°)	Azimuth (°)	Vertical Depth (usft)	+N/-S (usft)	+E/-W (usft)	Vertical Section (usft)	Dogleg Rate (°/100usft)	Build Rate (°/100usft)	Turn Rate (°/100usft)
795.0	9.30	197.60	791.8	-42.4	-36.8	53.9	2.58	2.53	3.79
889.0	10.90	206.00	884.4	-57.6	-43.0	70.3	2.31	1.70	8.94
984.0	12.80	208.30	977.3	-75.0	-51.9	89.8	2.06	2.00	2.42
1,079.0	14.80	207.40	1,069.6	-95.0	-62.5	112.5	2.12	2.11	-0.95
1,173.0	14.90	202.50	1,160.5	-116.8	-72.6	136.5	1.34	0.11	-5.21
1,268.0	15.90	198.90	1,252.0	-140.4	-81.5	161.7	1.46	1.05	-3.79
1,362.0	15.10	201.90	1,342.6	-164.0	-90.2	186.7	1.20	-0.85	3.19
1,457.0	14.00	206.00	1,434.6	-185.8	-99.9	210.6	1.59	-1.16	4.32
1,552.0	13.50	204.00	1,526.9	-206.2	-109.4	233.1	0.73	-0.53	-2.11
1,646.0	13.90	204.40	1,618.2	-226.5	-118.6	255.4	0.44	0.43	0.43
1,740.0	14.70	200.70	1,709.3	-248.0	-127.5	278.6	1.29	0.85	-3.94
1,835.0	15.40	199.30	1,801.0	-271.2	-135.9	303.2	0.83	0.74	-1.47
1,930.0	16.50	197.70	1,892.4	-295.9	-144.2	329.1	1.25	1.16	-1.68
2,024.0	16.80	200.30	1,982.4	-321.4	-152.9	355.9	0.85	0.32	2.77
2,119.0	16.40	200.10	2,073.5	-346.9	-162.3	382.9	0.43	-0.42	-0.21
2,213.0	16.20	199.40	2,163.7	-371.7	-171.2	409.2	0.30	-0.21	-0.74
2,308.0	16.00	200.40	2,255.0	-396.5	-180.2	435.5	0.36	-0.21	1.05
2,403.0	14.50	202.90	2,346.6	-419.7	-189.4	460.4	1.72	-1.58	2.63
2,497.0	13.80	198.40	2,437.8	-441.2	-197.5	483.3	1.39	-0.74	-4.79
2,592.0	14.10	202.40	2,530.0	-462.6	-205.5	506.1	1.06	0.32	4.21
2,687.0	14.30	202.90	2,622.1	-484.1	-214.5	529.4	0.25	0.21	0.53
2,781.0	14.30	208.40	2,713.1	-505.0	-224.5	552.6	1.44	0.00	5.85
2,876.0	13.40	209.40	2,805.4	-524.9	-235.5	575.3	0.98	-0.95	1.05
2,971.0	12.70	208.50	2,897.9	-543.7	-245.9	596.7	0.77	-0.74	-0.95
3,073.0	11.10	207.70	2,997.7	-562.3	-255.8	617.7	1.58	-1.57	-0.78
3,167.0	12.70	207.60	3,089.7	-579.4	-264.8	637.0	1.70	1.70	-0.11
3,262.0	15.20	206.50	3,181.9	-599.8	-275.2	659.9	2.65	2.63	-1.16
3,357.0	15.00	206.10	3,273.6	-622.0	-286.1	684.7	0.24	-0.21	-0.42
3,451.0	14.80	207.60	3,364.5	-643.6	-297.0	708.8	0.46	-0.21	1.60
3,546.0	14.50	207.80	3,456.4	-664.9	-308.2	732.8	0.32	-0.32	0.21
3,641.0	14.10	206.90	3,548.4	-685.7	-319.0	756.3	0.48	-0.42	-0.95
3,735.0	13.40	205.80	3,639.7	-705.7	-328.9	778.6	0.79	-0.74	-1.17
3,830.0	14.90	204.70	3,731.9	-726.7	-338.8	801.8	1.60	1.58	-1.16
3,925.0	14.00	204.00	3,823.8	-748.3	-348.6	825.5	0.97	-0.95	-0.74
4,019.0	13.20	203.50	3,915.2	-768.5	-357.5	847.6	0.86	-0.85	-0.53
4,114.0	14.70	203.60	4,007.4	-789.5	-366.6	870.5	1.58	1.58	0.11
4,208.0	14.90	203.10	4,098.3	-811.6	-376.2	894.5	0.25	0.21	-0.53
4,303.0	14.30	203.00	4,190.2	-833.6	-385.5	918.5	0.63	-0.63	-0.11
4,397.0	13.70	203.30	4,281.4	-854.5	-394.5	941.2	0.64	-0.64	0.32
4,492.0	13.10	203.90	4,373.8	-874.7	-403.3	963.2	0.65	-0.63	0.63
4,587.0	14.60	207.30	4,466.1	-895.2	-413.1	985.9	1.80	1.58	3.58
4,681.0	14.20	207.60	4,557.1	-915.9	-423.9	1,009.3	0.43	-0.43	0.32
4,776.0	13.90	207.80	4,649.3	-936.4	-434.6	1,032.3	0.32	-0.32	0.21

<b>Company:</b>	Caerus Oil & Gas	<b>Local Co-ordinate Reference:</b>	Well BJU B26 FED 13D-26 496 - Slot 13D-26
<b>Project:</b>	Garfield County, CO	<b>TVD Reference:</b>	RKB @ 8241.0usft (30')
<b>Site:</b>	BJU B26 496 Pad	<b>MD Reference:</b>	RKB @ 8241.0usft (30')
<b>Well:</b>	BJU B26 FED 13D-26 496	<b>North Reference:</b>	True
<b>Wellbore:</b>	Wellbore #1	<b>Survey Calculation Method:</b>	Minimum Curvature
<b>Design:</b>	Wellbore #1	<b>Database:</b>	EDM 5000.1 Single User Db

Survey									
Measured Depth (usft)	Inclination (°)	Azimuth (°)	Vertical Depth (usft)	+N/-S (usft)	+E/-W (usft)	Vertical Section (usft)	Dogleg Rate (°/100usft)	Build Rate (°/100usft)	Turn Rate (°/100usft)
4,870.0	14.10	203.40	4,740.5	-956.8	-444.5	1,055.0	1.15	0.21	-4.68
4,965.0	13.70	202.30	4,832.7	-977.9	-453.3	1,077.8	0.50	-0.42	-1.16
5,060.0	13.30	203.20	4,925.1	-998.3	-461.9	1,100.0	0.48	-0.42	0.95
5,154.0	13.80	198.80	5,016.5	-1,018.9	-469.8	1,122.0	1.22	0.53	-4.68
5,249.0	13.50	199.20	5,108.8	-1,040.1	-477.1	1,144.3	0.33	-0.32	0.42
5,344.0	13.20	200.30	5,201.2	-1,060.7	-484.5	1,166.1	0.41	-0.32	1.16
5,439.0	12.60	201.30	5,293.8	-1,080.5	-492.0	1,187.3	0.67	-0.63	1.05
5,533.0	12.10	201.50	5,385.6	-1,099.3	-499.3	1,207.3	0.53	-0.53	0.21
5,628.0	13.60	201.30	5,478.3	-1,118.9	-507.0	1,228.4	1.58	1.58	-0.21
5,723.0	14.10	199.70	5,570.5	-1,140.2	-515.0	1,251.1	0.66	0.53	-1.68
5,817.0	13.50	199.60	5,661.8	-1,161.4	-522.5	1,273.4	0.64	-0.64	-0.11
5,912.0	13.10	200.40	5,754.2	-1,181.9	-530.0	1,295.2	0.46	-0.42	0.84
6,007.0	12.20	200.10	5,846.9	-1,201.4	-537.2	1,315.9	0.95	-0.95	-0.32
6,101.0	13.40	203.20	5,938.6	-1,220.8	-544.9	1,336.7	1.47	1.28	3.30
6,196.0	13.90	204.60	6,030.9	-1,241.2	-554.0	1,359.2	0.63	0.53	1.47
6,290.0	13.20	204.40	6,122.3	-1,261.3	-563.1	1,381.2	0.75	-0.74	-0.21
6,385.0	12.30	205.40	6,215.0	-1,280.3	-572.0	1,402.1	0.98	-0.95	1.05
6,479.0	11.70	204.70	6,306.9	-1,298.0	-580.2	1,421.7	0.66	-0.64	-0.74
6,574.0	10.90	204.40	6,400.1	-1,314.9	-588.0	1,440.3	0.84	-0.84	-0.32
6,669.0	10.20	203.70	6,493.4	-1,330.8	-595.1	1,457.7	0.75	-0.74	-0.74
6,763.0	9.40	204.30	6,586.1	-1,345.4	-601.6	1,473.7	0.86	-0.85	0.64
6,858.0	10.80	205.20	6,679.6	-1,360.6	-608.6	1,490.3	1.48	1.47	0.95
6,952.0	10.90	206.10	6,771.9	-1,376.5	-616.2	1,508.0	0.21	0.11	0.96
7,047.0	10.60	206.70	6,865.3	-1,392.4	-624.1	1,525.7	0.34	-0.32	0.63
7,142.0	10.30	206.70	6,958.7	-1,407.8	-631.8	1,543.0	0.32	-0.32	0.00
7,236.0	8.80	199.50	7,051.4	-1,422.1	-638.0	1,558.5	2.04	-1.60	-7.66
7,331.0	8.50	199.90	7,145.3	-1,435.5	-642.8	1,572.8	0.32	-0.32	0.42
7,426.0	7.30	199.40	7,239.4	-1,447.8	-647.2	1,585.8	1.27	-1.26	-0.53
7,520.0	7.10	198.40	7,332.7	-1,459.0	-651.0	1,597.5	0.25	-0.21	-1.06
7,615.0	5.20	201.40	7,427.1	-1,468.5	-654.5	1,607.6	2.03	-2.00	3.16
7,709.0	4.80	203.30	7,520.7	-1,476.1	-657.6	1,615.8	0.46	-0.43	2.02
7,804.0	5.10	204.70	7,615.4	-1,483.6	-660.9	1,624.0	0.34	0.32	1.47
7,899.0	4.30	218.40	7,710.1	-1,490.2	-664.9	1,631.7	1.45	-0.84	14.42
7,993.0	1.40	211.30	7,803.9	-1,494.0	-667.7	1,636.2	3.10	-3.09	-7.55
8,088.0	0.90	147.00	7,898.9	-1,495.6	-667.9	1,637.8	1.36	-0.53	-67.68
8,183.0	1.00	153.60	7,993.9	-1,497.0	-667.1	1,638.7	0.16	0.11	6.95
8,277.0	0.90	152.40	8,087.9	-1,498.3	-666.4	1,639.7	0.11	-0.11	-1.28
8,372.0	0.90	162.50	8,182.9	-1,499.7	-665.8	1,640.7	0.17	0.00	10.63
8,467.0	0.90	165.90	8,277.9	-1,501.2	-665.4	1,641.8	0.06	0.00	3.58
8,561.0	1.00	165.50	8,371.9	-1,502.7	-665.0	1,643.0	0.11	0.11	-0.43
8,656.0	1.40	149.70	8,466.8	-1,504.5	-664.2	1,644.3	0.54	0.42	-16.63
8,751.0	0.50	233.50	8,561.8	-1,505.7	-664.0	1,645.4	1.51	-0.95	88.21
8,845.0	1.40	279.20	8,655.8	-1,505.8	-665.4	1,646.0	1.18	0.96	48.62

<b>Company:</b>	Caerus Oil & Gas	<b>Local Co-ordinate Reference:</b>	Well BJU B26 FED 13D-26 496 - Slot 13D-26
<b>Project:</b>	Garfield County, CO	<b>TVD Reference:</b>	RKB @ 8241.0usft (30')
<b>Site:</b>	BJU B26 496 Pad	<b>MD Reference:</b>	RKB @ 8241.0usft (30')
<b>Well:</b>	BJU B26 FED 13D-26 496	<b>North Reference:</b>	True
<b>Wellbore:</b>	Wellbore #1	<b>Survey Calculation Method:</b>	Minimum Curvature
<b>Design:</b>	Wellbore #1	<b>Database:</b>	EDM 5000.1 Single User Db

Survey									
Measured Depth (usft)	Inclination (°)	Azimuth (°)	Vertical Depth (usft)	+N/-S (usft)	+E/-W (usft)	Vertical Section (usft)	Dogleg Rate (°/100usft)	Build Rate (°/100usft)	Turn Rate (°/100usft)
8,940.0	1.50	261.80	8,750.8	-1,505.8	-667.8	1,647.0	0.47	0.11	-18.32
9,034.0	1.30	333.60	8,844.8	-1,505.0	-669.5	1,647.0	1.76	-0.21	76.38
9,129.0	2.40	7.20	8,939.7	-1,502.1	-669.7	1,644.5	1.58	1.16	35.37
9,224.0	2.10	358.20	9,034.6	-1,498.3	-669.5	1,641.0	0.49	-0.32	-9.47
9,319.0	2.10	336.00	9,129.6	-1,495.0	-670.3	1,638.3	0.85	0.00	-23.37
9,413.0	1.80	337.20	9,223.5	-1,492.1	-671.6	1,636.2	0.32	-0.32	1.28
9,508.0	1.10	232.10	9,318.5	-1,491.3	-672.9	1,636.0	2.46	-0.74	-110.63
9,602.0	2.20	228.30	9,412.5	-1,493.0	-674.9	1,638.4	1.18	1.17	-4.04
9,696.0	1.50	224.60	9,506.4	-1,495.1	-677.1	1,641.2	0.76	-0.74	-3.94
9,791.0	0.20	152.60	9,601.4	-1,496.1	-677.9	1,642.5	1.53	-1.37	-75.79
9,886.0	0.40	149.30	9,696.4	-1,496.6	-677.7	1,642.8	0.21	0.21	-3.47
9,980.0	0.60	162.60	9,790.4	-1,497.3	-677.4	1,643.4	0.24	0.21	14.15
10,075.0	0.70	172.90	9,885.4	-1,498.4	-677.2	1,644.2	0.16	0.11	10.84
10,170.0	0.90	198.10	9,980.4	-1,499.6	-677.3	1,645.4	0.42	0.21	26.53
10,264.0	0.80	195.40	10,074.4	-1,501.0	-677.7	1,646.8	0.11	-0.11	-2.87
10,359.0	1.20	204.50	10,169.4	-1,502.5	-678.3	1,648.5	0.45	0.42	9.58
10,454.0	2.00	197.70	10,264.3	-1,505.0	-679.2	1,651.1	0.86	0.84	-7.16
10,548.0	1.90	215.50	10,358.3	-1,507.8	-680.6	1,654.3	0.65	-0.11	18.94
10,643.0	2.20	215.80	10,453.2	-1,510.6	-682.6	1,657.6	0.32	0.32	0.32
10,736.0	2.60	222.70	10,546.1	-1,513.6	-685.1	1,661.4	0.53	0.43	7.42
10,832.0	2.40	211.60	10,642.0	-1,516.9	-687.6	1,665.4	0.54	-0.21	-11.56
10,927.0	2.50	214.50	10,737.0	-1,520.3	-689.8	1,669.5	0.17	0.11	3.05
11,021.0	2.10	217.30	10,830.9	-1,523.4	-692.0	1,673.2	0.44	-0.43	2.98
11,116.0	1.90	219.40	10,925.8	-1,526.0	-694.1	1,676.4	0.22	-0.21	2.21
11,210.0	2.00	207.40	11,019.8	-1,528.6	-695.8	1,679.5	0.45	0.11	-12.77
11,305.0	1.90	212.10	11,114.7	-1,531.4	-697.4	1,682.7	0.20	-0.11	4.95
11,399.0	2.10	216.10	11,208.7	-1,534.2	-699.3	1,686.0	0.26	0.21	4.26
11,494.0	2.20	216.10	11,303.6	-1,537.0	-701.4	1,689.5	0.11	0.11	0.00
11,588.0	2.50	215.40	11,397.5	-1,540.2	-703.6	1,693.3	0.32	0.32	-0.74
11,683.0	2.20	221.10	11,492.4	-1,543.2	-706.0	1,697.0	0.40	-0.32	6.00
11,778.0	2.20	231.60	11,587.4	-1,545.7	-708.7	1,700.4	0.42	0.00	11.05
11,873.0	2.00	232.10	11,682.3	-1,547.9	-711.4	1,703.5	0.21	-0.21	0.53
11,967.0	2.10	231.10	11,776.2	-1,550.0	-714.0	1,706.5	0.11	0.11	-1.06
12,030.0	2.30	231.20	11,839.2	-1,551.5	-715.9	1,708.7	0.32	0.32	0.16
TD @ 12090.0' MD / 11899.1' TVD									
12,090.0	2.30	231.20	11,899.1	-1,553.0	-717.8	1,710.9	0.00	0.00	0.00

Design Annotations				
Measured Depth (usft)	Vertical Depth (usft)	Local Coordinates		Comment
		+N/-S (usft)	+E/-W (usft)	
120.0	120.0	-0.1	0.1	Tie-In @ 120.0' MD / 120.0' TVD
12,090.0	11,899.1	-1,553.0	-717.8	TD @ 12090.0' MD / 11899.1' TVD



<b>Company:</b>	Caerus Oil & Gas	<b>Local Co-ordinate Reference:</b>	Well BJU B26 FED 13D-26 496 - Slot 13D-26
<b>Project:</b>	Garfield County, CO	<b>TVD Reference:</b>	RKB @ 8241.0usft (30')
<b>Site:</b>	BJU B26 496 Pad	<b>MD Reference:</b>	RKB @ 8241.0usft (30')
<b>Well:</b>	BJU B26 FED 13D-26 496	<b>North Reference:</b>	True
<b>Wellbore:</b>	Wellbore #1	<b>Survey Calculation Method:</b>	Minimum Curvature
<b>Design:</b>	Wellbore #1	<b>Database:</b>	EDM 5000.1 Single User Db