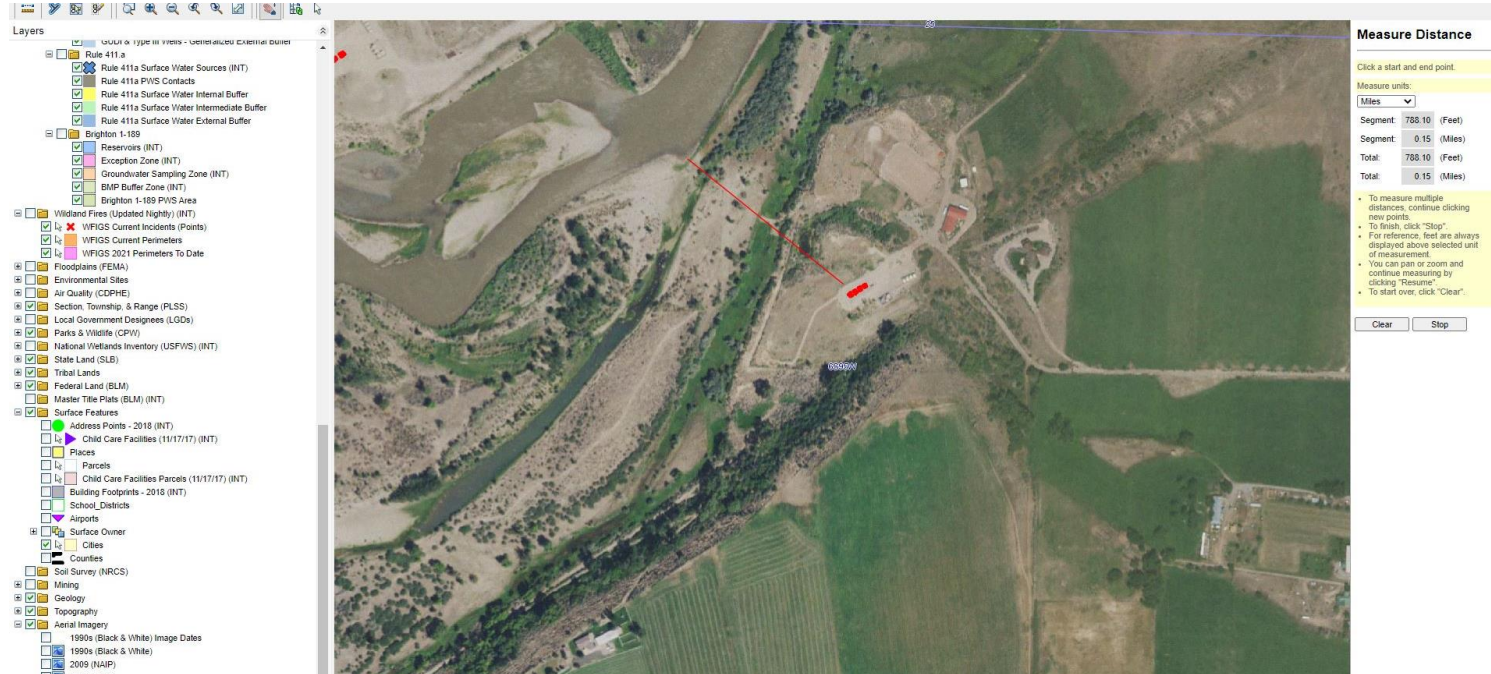


Stormwater Management and Erosion control

Location Name: TEP ROCKY MOUNTAIN LLC POTTER-66S95W /36NWNE

Location #: 335172



Location Overview: The location is approximately 260 yards from the Colorado River

Section/Township/Range: 36 6S95W

Stormwater Management and Erosion control

Location Name: TEP ROCKY MOUNTAIN LLC POTTER-66S95W /36NWNE

Location #: 335172



Location Overview: The location is Located in a high priority habitat area.

Section/Township/Range: 36 6S95W

Stormwater Management and Erosion control
Location Name: TEP ROCKY MOUNTAIN LLC POTTER-66S95W /36NWNE
Location #: 335172



Photo #9909 Location lacks stabilization.



Photo #9910 Location lacks stabilization.

Stormwater Management and Erosion control
Location Name: TEP ROCKY MOUNTAIN LLC POTTER-66S95W /36NWNE
Location #: 335172



Photo #9911 Location lacks stabilization.



Photo #9912 Location lacks stabilization.

Stormwater Management and Erosion control
Location Name: TEP ROCKY MOUNTAIN LLC POTTER-66S95W /36NWNE
Location #: 335172



Photo #9913 Insufficient tracking BMP to minimize the transport of sediment.



Photo #9914 Insufficient tracking BMP to minimize the transport of sediment.