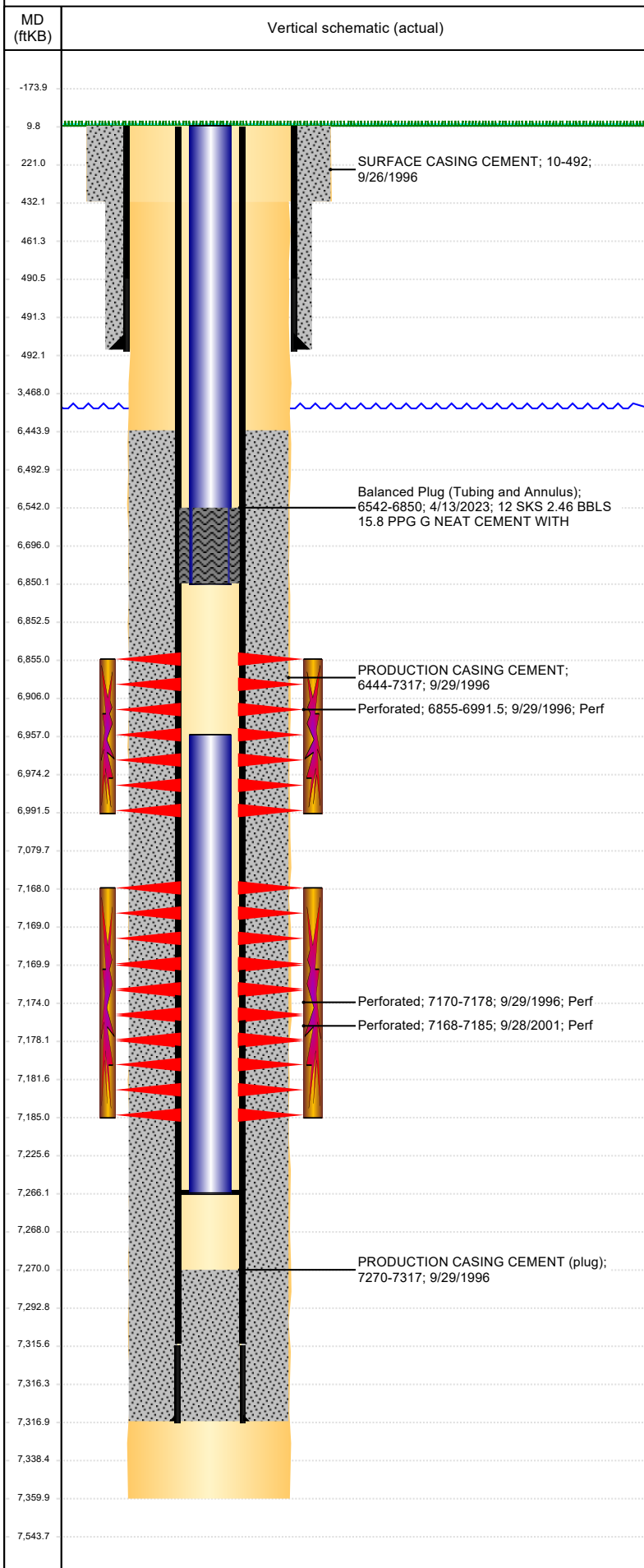




P&A Wellbore For State

Well Name: MEYER J26-16

Land, Original Hole, 5/10/2023 3:24:03 PM



Well Header									
Surface UWI 0512319218			Business Unit Rockies			Gov Auth Dist		Prod Tree Loc Land	
Orig. KB to Gnd (ft) 10.00		Original Spud Date 9/25/1996		Abandon Date		Well Sub-Status TA			High Pre N
Comment									
Surface Location (Congressional)									
Quarter 3 SE	Quarter 4 SE	Section 26	Township 5	Twnshp N N	Range 66	Rng E/W W	Latitude (°) 40.366169182		Longitude (°) -104.737523638
Wellbore Sections									
Section Des			Hole Size (in)			Act Top (ftKB)		Act Btm (ftKB)	
SURFACE			12 1/4			10.0		432.0	
PRODUCTION			7 7/8			432.0		7,360.0	
Casing Strings									
Csg Des			Run Date		OD (in)	Wt/Len (lb/ft)	Grade	Top Depth (MD) (ftKB)	Set Depth (MD) (ftKB)
Surface			9/26/1996		8 5/8	24.00	?	10	492
Production Casing			9/29/1996		3 1/2	7.70	M-75	10	7317
Cement									
Des					Start Date		Top (ftKB)		Btm (ftKB)
SURFACE CASING CEMENT					9/26/1996		10.0		492.0
PRODUCTION CASING CEMENT					9/29/1996		6,444.0		7,317.0
Balanced Plug (Tubing and Annulus)					4/13/2023		6,542.0		6,850.0
Zone Statuses									
Zone Name		Status Date	Status	Fluid Type	Job			Prod Method	
NIOBRARA		2/8/2010	PR	Water	Abandon Well - Temporary, 1/19/2023 00:00			Flowing	
NIOBRARA		4/13/2023	Closed						
CODELL		11/29/2016	SI						
CODELL		4/13/2023	Closed	Abandon Well - Temporary, 1/19/2023 00:00					
Perforation Data									
Linked Zone			Explosive Type	Entered Shot Total	Top (ftKB)		Btm (ftKB)		Date
NIOBRARA, Original Hole			A	12	6,855.0		6,991.5		9/29/1996
CODELL, Original Hole				72	7,168.0		7,185.0		9/28/2001
CODELL, Original Hole				32	7,170.0		7,178.0		9/29/1996
Stimulation Intervals									
Zone				Start Date		Top (ftKB)		Btm (ftKB)	
NIOBRARA, Original Hole				10/11/1996		6,855.0		6,991.5	
CODELL, Original Hole				10/9/2001		7,168.0		7,185.0	
CODELL, Original Hole				10/11/1996		7,170.0		7,178.0	
Other In Hole									
Run Date		Des			Make		OD (in)	Top (ftKB)	Btm (ftKB)
Logs									
Date		Type				Depth Top (MD) (ftKB)		Btm (ftKB)	
9/28/1996		COMPENSATED DENSITY				492		7,352.0	
9/28/1996		INDUCTION				492		7,352.0	
10/8/1996		CBL/CCL/GR				6,320		7,266.0	
Plug Back Total Depths									
Date		Type			Com				PBTD (ftKB)
10/8/1996		FILL			DEPTH LOGGER ON CBL				7,270
9/27/2001					PBTD LISTED ON DAILY REPORT				7,266