

# **CRESTONE PEAK RESOURCES**

**WELD COUNTY**

**SEC 25-T4N-R65W**

**SHELTON 25W-25-13**

**OWB**

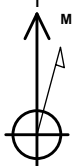
**Design: FINAL SURVEY**

## **Standard Survey Report**

**17 January, 2023**

Project: WELD COUNTY  
Site: SEC 25-T4N-R65W  
Well: SHELTON 25W-25-13  
Wellbore: OWB  
Design: FINAL SURVEY

PROJECT DETAILS: WELD COUNTY  
Geodetic System: US State Plane 1983  
Datum: North American Datum 1983  
Ellipsoid: GRS 1980  
Zone: Colorado Northern Zone  
System Datum: Mean Sea Level



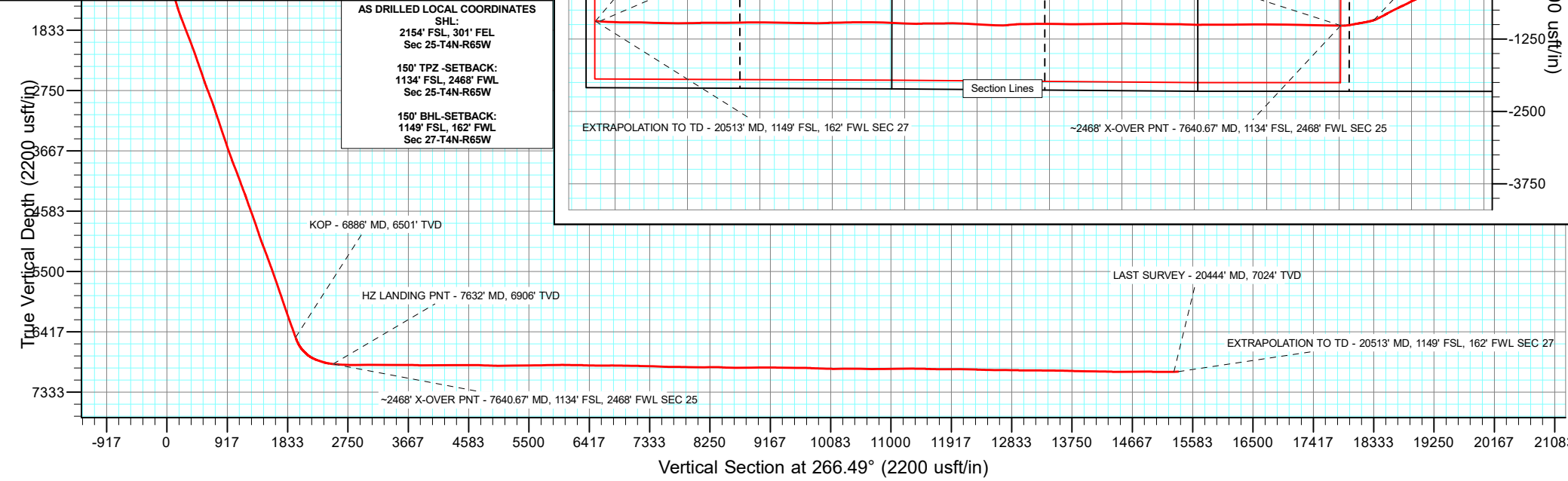
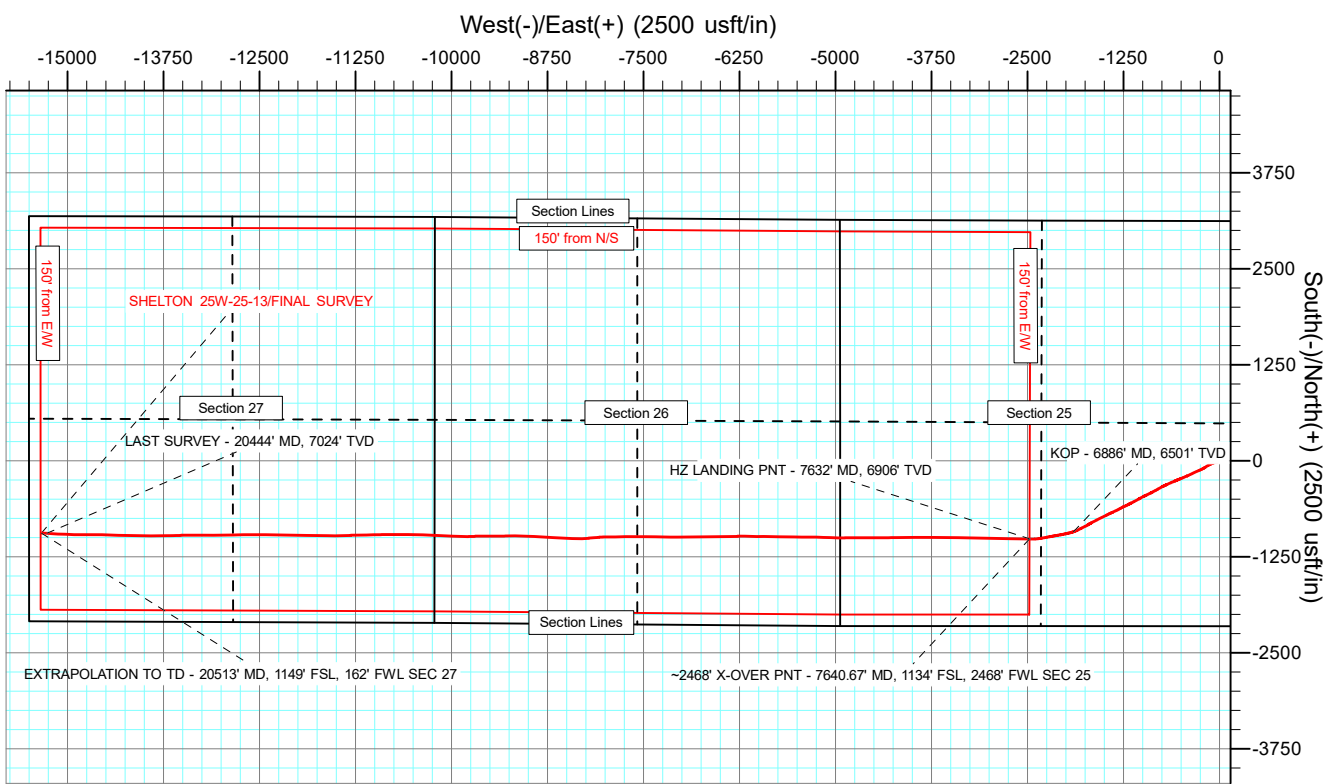
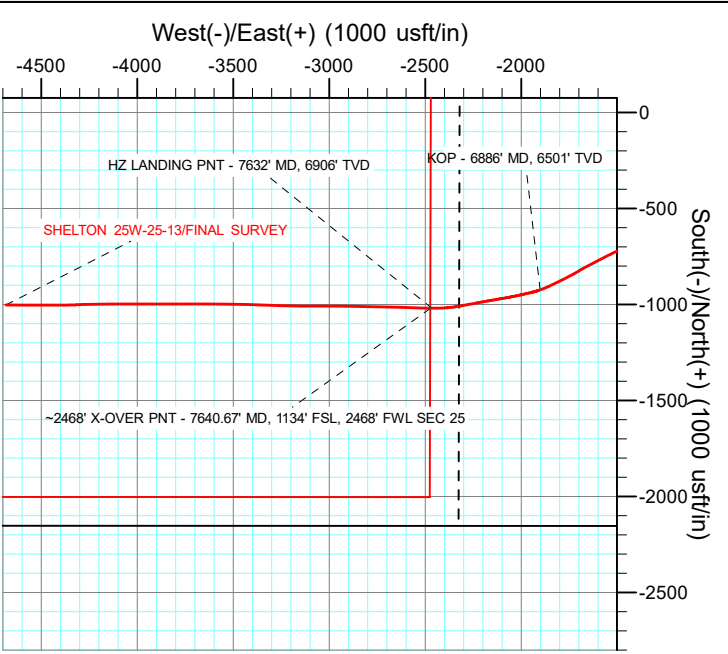
Azimuths to True North  
Magnetic North: 7.62°  
Magnetic Field  
Strength: 51773.3nT  
Dip Angle: 66.53°  
Date: 9/26/2022  
Model: IGRF2020

WELL DETAILS: SHELTON 25W-25-13

+N/-S	+E/-W	Northing	Easting	4835.00 Latitude	Longitude	Slot
0.00	0.00	1346793.73	3250146.29	40.281877°N	104.603389°W	

ANNOTATIONS

MD	Inc	Azi	TVD	+N/-S	+E/-W	Vsect	Departure	Annotation
6886.00	20.71	250.43	6500.76	-923.33	-1900.94	1953.87	2119.51	KOP - 6886' MD, 6501' TVD
7632.00	63.53	269.84	6906.29	-1019.17	-2464.33	2522.06	2692.25	HZ LANDING PNT - 7632' MD, 6906' TVD
7640.67	63.85	270.25	6907.24	-1019.17	-2472.94	2530.67	2700.86	~2468' X-OVER PNT - 7640.67' MD, 1134' FSL, 2468' FWL SEC 25
20444.00	90.55	272.90	7024.27	-943.63	-15268.73	15297.86	15501.46	LAST SURVEY - 20444' MD, 7024' TVD
20513.00	90.55	272.90	7023.61	-940.14	-15337.64	15366.42	15570.45	EXTRAPOLATION TO TD - 20513' MD, 1149' FSL, 162' FWL SEC 27



AS DRILLED LOCAL COORDINATES  
SHL:  
2154' FSL, 301' FEL  
Sec 25-T4N-R65W  
150' TPZ -SETBACK:  
1134' FSL, 2468' FWL  
Sec 25-T4N-R65W  
150' BHL-SETBACK:  
1149' FSL, 162' FWL  
Sec 27-T4N-R65W

## Survey Report

<b>Company:</b>	CRESTONE PEAK RESOURCES	<b>Local Co-ordinate Reference:</b>	Well SHELTON 25W-25-13
<b>Project:</b>	WELD COUNTY	<b>TVD Reference:</b>	KB 25' @ 4860.00usft
<b>Site:</b>	SEC 25-T4N-R65W	<b>MD Reference:</b>	KB 25' @ 4860.00usft
<b>Well:</b>	SHELTON 25W-25-13	<b>North Reference:</b>	True
<b>Wellbore:</b>	OWB	<b>Survey Calculation Method:</b>	Minimum Curvature
<b>Design:</b>	FINAL SURVEY	<b>Database:</b>	EDT_32Bit_ODBC

<b>Project</b>	WELD COUNTY		
<b>Map System:</b>	US State Plane 1983	<b>System Datum:</b>	Mean Sea Level
<b>Geo Datum:</b>	North American Datum 1983		
<b>Map Zone:</b>	Colorado Northern Zone		Using geodetic scale factor

Site		SEC 25-T4N-R65W					
Site Position:		Northing:	1,344,643.82	usft	Latitude:	40.275967°N	
From:	Lat/Long	Easting:	3,250,457.11	usft	Longitude:	104.602353°W	
Position Uncertainty:	0.00	usft	Slot Radius:	13.200	in	Grid Convergence:	0.58 °

Well	SHELTON 25W-25-13					
Well Position	+N/-S	0.00 usft	Northing:	1,346,793.73 usft	Latitude:	40.281877°N
	+E/-W	0.00 usft	Easting:	3,250,146.29 usft	Longitude:	104.603389°W
Position Uncertainty		0.00 usft	Wellhead Elevation:	usft	Ground Level:	4,835.00 usft

<b>Wellbore</b>	OWB				
<b>Magnetics</b>	<b>Model Name</b>	<b>Sample Date</b>	<b>Declination (°)</b>	<b>Dip Angle (°)</b>	<b>Field Strength (nT)</b>
	IGRF2020	9/26/2022	7.62	66.53	51,773.33058492

<b>Design</b>	FINAL SURVEY				
<b>Audit Notes:</b>					
<b>Version:</b>	1.0	<b>Phase:</b>	ACTUAL	<b>Tie On Depth:</b>	0.00
<b>Vertical Section:</b>	<b>Depth From (TVD) (usft)</b>	<b>+N/-S (usft)</b>	<b>+E/-W (usft)</b>	<b>Direction (°)</b>	
	0.00	0.00	0.00		266.49

<b>Survey Program</b>	<b>Date</b>	1/17/2023			
<b>From (usft)</b>	<b>To (usft)</b>	<b>Survey (Wellbore)</b>	<b>Tool Name</b>	<b>Description</b>	
152.00	1,867.00	SURFACE (OWB)	MWD OWSG	OWSG MWD - Standard	
2,055.00	20,513.00	FINAL SURVEY (OWB)	MWD OWSG	OWSG MWD - Standard	

<b>Survey</b>										
<b>Measured Depth (usft)</b>	<b>Inclination (°)</b>	<b>Azimuth (°)</b>	<b>Vertical Depth (usft)</b>	<b>+N/-S (usft)</b>	<b>+E/-W (usft)</b>	<b>Vertical Section (usft)</b>	<b>Dogleg Rate (°/100ft)</b>	<b>Build Rate (°/100ft)</b>	<b>Turn Rate (°/100ft)</b>	
0.00	0.00	0.00	0.00	0.00	0.00	0.00	0.00	0.00	0.00	
152.00	0.30	300.70	152.00	0.20	-0.34	0.33	0.20	0.20	0.00	
243.00	0.40	316.60	243.00	0.56	-0.77	0.73	0.15	0.11	17.47	
335.00	0.70	320.50	334.99	1.22	-1.34	1.27	0.33	0.33	4.24	
427.00	0.80	277.60	426.99	1.74	-2.34	2.23	0.60	0.11	-46.63	
517.00	1.10	251.00	516.97	1.54	-3.78	3.68	0.58	0.33	-29.56	
606.00	1.80	238.30	605.95	0.53	-5.77	5.73	0.86	0.79	-14.27	
698.00	3.20	223.50	697.86	-2.09	-8.77	8.88	1.66	1.52	-16.09	
787.00	4.40	221.50	786.66	-6.45	-12.74	13.11	1.36	1.35	-2.25	
877.00	5.40	246.80	876.34	-10.71	-18.92	19.54	2.62	1.11	28.11	

## Survey Report

<b>Company:</b>	CRESTONE PEAK RESOURCES	<b>Local Co-ordinate Reference:</b>	Well SHELTON 25W-25-13
<b>Project:</b>	WELD COUNTY	<b>TVD Reference:</b>	KB 25' @ 4860.00usft
<b>Site:</b>	SEC 25-T4N-R65W	<b>MD Reference:</b>	KB 25' @ 4860.00usft
<b>Well:</b>	SHELTON 25W-25-13	<b>North Reference:</b>	True
<b>Wellbore:</b>	OWB	<b>Survey Calculation Method:</b>	Minimum Curvature
<b>Design:</b>	FINAL SURVEY	<b>Database:</b>	EDT_32Bit_ODBC

Survey									
Measured Depth (usft)	Inclination (°)	Azimuth (°)	Vertical Depth (usft)	+N/-S (usft)	+E/-W (usft)	Vertical Section (usft)	Dogleg Rate (°/100ft)	Build Rate (°/100ft)	Turn Rate (°/100ft)
970.00	8.30	257.20	968.67	-13.92	-29.49	30.29	3.38	3.12	11.18
1,060.00	11.40	256.60	1,057.33	-17.42	-44.49	45.47	3.45	3.44	-0.67
1,149.00	13.30	255.60	1,144.27	-22.00	-62.96	64.19	2.15	2.13	-1.12
1,242.00	15.30	250.70	1,234.39	-28.72	-84.90	86.50	2.51	2.15	-5.27
1,332.00	18.00	244.46	1,320.61	-38.64	-108.66	110.82	3.59	3.00	-6.93
1,421.00	18.90	239.50	1,405.04	-51.89	-133.49	136.42	2.03	1.01	-5.57
1,512.00	19.30	237.60	1,491.03	-67.43	-158.89	162.72	0.81	0.44	-2.09
1,602.00	21.80	237.60	1,575.30	-84.35	-185.56	190.38	2.78	2.78	0.00
1,694.00	22.80	242.60	1,660.42	-101.71	-215.82	221.63	2.33	1.09	5.43
1,786.00	22.20	246.00	1,745.42	-116.99	-247.52	254.21	1.56	-0.65	3.70
1,867.00	23.00	246.40	1,820.20	-129.55	-276.00	283.41	1.01	0.99	0.49
2,055.00	22.34	243.98	1,993.68	-159.92	-341.77	350.91	0.61	-0.35	-1.29
2,244.00	21.30	246.78	2,169.14	-189.22	-405.60	416.41	0.78	-0.55	1.48
2,339.00	19.79	246.13	2,258.10	-202.53	-436.16	447.74	1.61	-1.59	-0.68
2,435.00	20.29	245.86	2,348.29	-215.91	-466.21	478.55	0.53	0.52	-0.28
2,530.00	20.78	248.59	2,437.25	-228.80	-496.94	510.00	1.13	0.52	2.87
2,623.00	18.79	249.93	2,524.76	-239.96	-526.37	540.06	2.19	-2.14	1.44
2,718.00	19.79	246.11	2,614.43	-251.73	-555.44	569.80	1.69	1.05	-4.02
2,813.00	22.74	247.36	2,702.95	-265.31	-587.10	602.23	3.14	3.11	1.32
3,003.00	21.56	245.69	2,878.93	-293.82	-652.81	669.56	0.70	-0.62	-0.88
3,098.00	21.03	245.47	2,967.44	-308.08	-684.23	701.79	0.56	-0.56	-0.23
3,193.00	18.82	245.80	3,056.75	-321.44	-713.71	732.04	2.33	-2.33	0.35
3,289.00	20.90	241.90	3,147.04	-335.86	-742.95	762.10	2.57	2.17	-4.06
3,478.00	20.02	240.16	3,324.11	-367.84	-800.75	821.75	0.57	-0.47	-0.92
3,573.00	20.51	242.29	3,413.23	-383.67	-829.59	851.51	0.93	0.52	2.24
3,690.00	20.36	240.65	3,522.87	-403.17	-865.48	888.52	0.51	-0.13	-1.40
3,785.00	19.90	244.59	3,612.07	-418.21	-894.49	918.40	1.51	-0.48	4.15
3,880.00	21.05	245.37	3,701.07	-432.26	-924.60	949.31	1.24	1.21	0.82
3,975.00	21.30	243.40	3,789.66	-447.10	-955.54	981.10	0.79	0.26	-2.07
4,071.00	23.64	242.17	3,878.36	-463.89	-988.15	1,014.68	2.49	2.44	-1.28
4,165.00	23.23	242.21	3,964.61	-481.33	-1,021.22	1,048.76	0.44	-0.44	0.04
4,260.00	21.77	240.72	4,052.38	-498.69	-1,053.16	1,081.70	1.65	-1.54	-1.57
4,356.00	21.76	242.05	4,141.53	-515.73	-1,084.41	1,113.93	0.51	-0.01	1.39
4,545.00	23.24	243.34	4,316.14	-548.89	-1,148.68	1,180.11	0.83	0.78	0.68
4,640.00	19.62	243.04	4,404.56	-564.53	-1,179.66	1,211.99	3.81	-3.81	-0.32
4,736.00	21.15	244.06	4,494.54	-579.42	-1,209.60	1,242.79	1.64	1.59	1.06
4,830.00	22.19	245.86	4,581.90	-594.09	-1,241.05	1,275.08	1.31	1.11	1.91
4,925.00	21.37	242.65	4,670.12	-609.38	-1,272.80	1,307.70	1.52	-0.86	-3.38
5,020.00	20.62	240.77	4,758.82	-625.50	-1,302.77	1,338.60	1.06	-0.79	-1.98
5,210.00	20.01	245.80	4,937.01	-655.17	-1,361.62	1,399.16	0.97	-0.32	2.65
5,304.00	20.07	245.05	5,025.32	-668.57	-1,390.92	1,429.21	0.28	0.06	-0.80
5,399.00	22.99	245.77	5,113.68	-683.06	-1,422.62	1,461.75	3.09	3.07	0.76
5,494.00	22.79	242.39	5,201.20	-699.20	-1,455.84	1,495.89	1.40	-0.21	-3.56

# Survey Report

<b>Company:</b>	CRESTONE PEAK RESOURCES	<b>Local Co-ordinate Reference:</b>	Well SHELTON 25W-25-13
<b>Project:</b>	WELD COUNTY	<b>TVD Reference:</b>	KB 25' @ 4860.00usft
<b>Site:</b>	SEC 25-T4N-R65W	<b>MD Reference:</b>	KB 25' @ 4860.00usft
<b>Well:</b>	SHELTON 25W-25-13	<b>North Reference:</b>	True
<b>Wellbore:</b>	OWB	<b>Survey Calculation Method:</b>	Minimum Curvature
<b>Design:</b>	FINAL SURVEY	<b>Database:</b>	EDT_32Bit_ODBC

Survey										
Measured Depth (usft)	Inclination (°)	Azimuth (°)	Vertical Depth (usft)	+N/-S (usft)	+E/-W (usft)	Vertical Section (usft)	Dogleg Rate (°/100ft)	Build Rate (°/100ft)	Turn Rate (°/100ft)	
5,589.00	21.38	244.06	5,289.23	-715.30	-1,487.72	1,528.70	1.62	-1.48	1.76	
5,684.00	21.59	244.30	5,377.63	-730.46	-1,519.04	1,560.89	0.24	0.22	0.25	
5,874.00	20.93	242.73	5,554.70	-761.17	-1,580.71	1,624.31	0.46	-0.35	-0.83	
5,968.00	20.34	242.21	5,642.67	-776.48	-1,610.08	1,654.57	0.66	-0.63	-0.55	
6,157.00	21.22	242.42	5,819.37	-807.63	-1,669.46	1,715.74	0.47	0.47	0.11	
6,252.00	20.47	238.04	5,908.16	-824.38	-1,698.79	1,746.05	1.82	-0.79	-4.61	
6,347.00	20.74	241.78	5,997.09	-841.13	-1,727.71	1,775.94	1.41	0.28	3.94	
6,441.00	20.28	243.44	6,085.13	-856.28	-1,756.95	1,806.05	0.79	-0.49	1.77	
6,536.00	20.68	242.85	6,174.12	-871.30	-1,786.60	1,836.56	0.47	0.42	-0.62	
6,631.00	21.65	243.85	6,262.72	-886.68	-1,817.26	1,868.10	1.09	1.02	1.05	
6,725.00	21.47	244.95	6,350.14	-901.60	-1,848.41	1,900.11	0.47	-0.19	1.17	
6,820.00	20.22	247.94	6,438.92	-915.13	-1,879.38	1,931.85	1.73	-1.32	3.15	
6,886.00	20.71	250.43	6,500.76	-923.33	-1,900.94	1,953.87	1.51	0.74	3.77	
KOP - 6886' MD, 6501' TVD										
6,914.00	20.93	251.45	6,526.93	-926.58	-1,910.35	1,963.46	1.51	0.78	3.65	
7,010.00	29.98	256.80	6,613.53	-937.53	-1,950.05	2,003.75	9.72	9.43	5.57	
7,104.00	40.33	257.24	6,690.28	-949.65	-2,002.72	2,057.07	11.01	11.01	0.47	
7,200.00	49.65	259.89	6,758.11	-962.96	-2,069.19	2,124.22	9.90	9.71	2.76	
7,293.00	61.47	260.34	6,810.61	-976.08	-2,144.62	2,200.32	12.72	12.71	0.48	
7,388.00	70.48	259.50	6,849.25	-991.27	-2,229.95	2,286.42	9.52	9.48	-0.88	
7,484.00	73.45	259.82	6,878.96	-1,007.66	-2,319.74	2,377.05	3.11	3.09	0.33	
7,578.00	81.58	267.30	6,899.30	-1,017.84	-2,410.81	2,468.56	11.62	8.65	7.96	
7,632.00	83.53	269.84	6,906.29	-1,019.17	-2,464.33	2,522.06	5.90	3.62	4.71	
HZ LANDING PNT - 7632' MD, 6906' TVD										
7,640.67	83.85	270.25	6,907.24	-1,019.17	-2,472.94	2,530.67	5.90	3.63	4.68	
~2468' X-OVER PNT - 7640.67' MD, 1134' FSL, 2468' FWL SEC 25										
7,672.00	84.99	271.71	6,910.29	-1,018.63	-2,504.12	2,561.75	5.90	3.64	4.67	
7,767.00	87.89	272.14	6,916.19	-1,015.45	-2,598.87	2,656.13	3.09	3.05	0.45	
7,862.00	87.67	271.10	6,919.87	-1,012.76	-2,693.76	2,750.68	1.12	-0.23	-1.09	
7,956.00	89.70	271.20	6,922.03	-1,010.88	-2,787.71	2,844.34	2.16	2.16	0.11	
8,051.00	90.07	270.62	6,922.22	-1,009.37	-2,882.70	2,939.05	0.72	0.39	-0.61	
8,146.00	90.88	271.39	6,921.43	-1,007.70	-2,977.68	3,033.76	1.18	0.85	0.81	
8,241.00	91.37	269.22	6,919.56	-1,007.20	-3,072.66	3,128.52	2.34	0.52	-2.28	
8,335.00	89.13	270.68	6,919.15	-1,007.28	-3,166.65	3,222.34	2.84	-2.38	1.55	
8,429.00	89.41	272.06	6,920.35	-1,005.03	-3,260.61	3,315.99	1.50	0.30	1.47	
8,524.00	89.60	272.08	6,921.17	-1,001.60	-3,355.54	3,410.54	0.20	0.20	0.02	
8,620.00	89.89	270.49	6,921.60	-999.45	-3,451.52	3,506.20	1.68	0.30	-1.66	
8,715.00	90.29	271.26	6,921.45	-998.00	-3,546.50	3,600.92	0.91	0.42	0.81	
8,809.00	89.61	270.51	6,921.53	-996.55	-3,640.49	3,694.64	1.08	-0.72	-0.80	
8,905.00	87.69	269.08	6,923.79	-996.89	-3,736.46	3,790.45	2.49	-2.00	-1.49	
8,999.00	89.21	270.52	6,926.34	-997.22	-3,830.42	3,884.25	2.23	1.62	1.53	
9,094.00	90.42	270.35	6,926.64	-996.49	-3,925.41	3,979.02	1.29	1.27	-0.18	
9,189.00	90.20	269.49	6,926.13	-996.63	-4,020.41	4,073.85	0.93	-0.23	-0.91	
9,283.00	90.51	269.54	6,925.55	-997.42	-4,114.40	4,167.72	0.33	0.33	0.05	

## Survey Report

<b>Company:</b>	CRESTONE PEAK RESOURCES	<b>Local Co-ordinate Reference:</b>	Well SHELTON 25W-25-13
<b>Project:</b>	WELD COUNTY	<b>TVD Reference:</b>	KB 25' @ 4860.00usft
<b>Site:</b>	SEC 25-T4N-R65W	<b>MD Reference:</b>	KB 25' @ 4860.00usft
<b>Well:</b>	SHELTON 25W-25-13	<b>North Reference:</b>	True
<b>Wellbore:</b>	OWB	<b>Survey Calculation Method:</b>	Minimum Curvature
<b>Design:</b>	FINAL SURVEY	<b>Database:</b>	EDT_32Bit_ODBC

Survey									
Measured Depth (usft)	Inclination (°)	Azimuth (°)	Vertical Depth (usft)	+N/-S (usft)	+E/-W (usft)	Vertical Section (usft)	Dogleg Rate (°/100ft)	Build Rate (°/100ft)	Turn Rate (°/100ft)
9,378.00	90.85	269.50	6,924.42	-998.22	-4,209.39	4,262.58	0.36	0.36	-0.04
9,473.00	91.16	267.75	6,922.75	-1,000.50	-4,304.35	4,357.50	1.87	0.33	-1.84
9,568.00	89.31	269.99	6,922.36	-1,002.37	-4,399.32	4,452.40	3.06	-1.95	2.36
9,663.00	89.78	269.89	6,923.12	-1,002.47	-4,494.31	4,547.23	0.51	0.49	-0.11
9,757.00	90.54	270.67	6,922.86	-1,002.01	-4,588.31	4,641.02	1.16	0.81	0.83
9,852.00	88.14	269.60	6,923.95	-1,001.79	-4,683.30	4,735.81	2.77	-2.53	-1.13
9,947.00	88.15	270.46	6,927.03	-1,001.74	-4,778.25	4,830.58	0.90	0.01	0.91
10,042.00	87.42	268.69	6,930.70	-1,002.44	-4,873.17	4,925.37	2.01	-0.77	-1.86
10,136.00	88.74	271.06	6,933.85	-1,002.65	-4,967.11	5,019.14	2.88	1.40	2.52
10,232.00	91.26	272.52	6,933.85	-999.65	-5,063.05	5,114.72	3.03	2.62	1.52
10,327.00	91.71	271.18	6,931.39	-996.58	-5,157.97	5,209.27	1.49	0.47	-1.41
10,421.00	90.51	270.88	6,929.56	-994.89	-5,251.93	5,302.96	1.32	-1.28	-0.32
10,516.00	91.21	269.55	6,928.14	-994.53	-5,346.92	5,397.75	1.58	0.74	-1.40
10,610.00	89.87	271.14	6,927.25	-993.97	-5,440.91	5,491.53	2.21	-1.43	1.69
10,705.00	91.49	271.40	6,926.12	-991.86	-5,535.87	5,586.19	1.73	1.71	0.27
10,799.00	89.72	270.02	6,925.13	-990.70	-5,629.85	5,679.92	2.39	-1.88	-1.47
10,895.00	91.18	273.19	6,924.38	-988.01	-5,725.80	5,775.52	3.64	1.52	3.30
11,085.00	91.07	269.17	6,920.65	-984.10	-5,915.68	5,964.81	2.12	-0.06	-2.12
11,179.00	88.53	270.43	6,920.97	-984.43	-6,009.67	6,058.64	3.02	-2.70	1.34
11,274.00	89.09	271.14	6,922.95	-983.13	-6,104.64	6,153.35	0.95	0.59	0.75
11,369.00	89.90	270.25	6,923.78	-981.97	-6,199.63	6,248.09	1.27	0.85	-0.94
11,464.00	88.04	268.69	6,925.49	-982.85	-6,294.60	6,342.94	2.56	-1.96	-1.64
11,558.00	88.68	268.43	6,928.18	-985.21	-6,388.53	6,436.84	0.73	0.68	-0.28
11,653.00	89.68	268.97	6,929.54	-987.37	-6,483.50	6,531.76	1.20	1.05	0.57
11,748.00	89.74	269.92	6,930.02	-988.29	-6,578.49	6,626.63	1.00	0.06	1.00
11,844.00	90.99	270.28	6,929.41	-988.12	-6,674.49	6,722.44	1.36	1.30	0.37
11,938.00	88.68	268.48	6,929.68	-989.14	-6,768.47	6,816.31	3.12	-2.46	-1.91
12,033.00	89.35	268.32	6,931.32	-991.79	-6,863.42	6,911.24	0.73	0.71	-0.17
12,128.00	88.51	269.40	6,933.09	-993.68	-6,958.38	7,006.14	1.44	-0.88	1.14
12,224.00	89.53	269.29	6,934.73	-994.78	-7,054.36	7,102.01	1.07	1.06	-0.11
12,319.00	88.61	271.84	6,936.27	-993.84	-7,149.33	7,196.75	2.85	-0.97	2.68
12,415.00	89.17	271.51	6,938.13	-991.04	-7,245.27	7,292.33	0.68	0.58	-0.34
12,510.00	87.23	270.48	6,941.12	-989.39	-7,340.21	7,386.99	2.31	-2.04	-1.08
12,605.00	87.71	270.69	6,945.31	-988.42	-7,435.11	7,481.65	0.55	0.51	0.22
12,700.00	88.48	271.01	6,948.47	-987.01	-7,530.05	7,576.33	0.88	0.81	0.34
12,795.00	89.35	270.84	6,950.27	-985.48	-7,625.02	7,671.02	0.93	0.92	-0.18
12,890.00	89.84	267.95	6,950.94	-986.48	-7,720.00	7,765.89	3.09	0.52	-3.04
12,985.00	88.49	268.00	6,952.32	-989.84	-7,814.93	7,860.85	1.42	-1.42	0.05
13,080.00	88.60	269.98	6,954.74	-991.51	-7,909.88	7,955.72	2.09	0.12	2.08
13,175.00	89.65	269.48	6,956.19	-991.96	-8,004.86	8,050.56	1.22	1.11	-0.53
13,271.00	90.51	264.97	6,956.05	-996.60	-8,100.72	8,146.52	4.78	0.90	-4.70
13,366.00	91.38	264.32	6,954.49	-1,005.47	-8,195.29	8,241.46	1.14	0.92	-0.68
13,461.00	89.09	266.65	6,954.10	-1,012.95	-8,289.99	8,336.43	3.44	-2.41	2.45

## Survey Report

<b>Company:</b>	CRESTONE PEAK RESOURCES	<b>Local Co-ordinate Reference:</b>	Well SHELTON 25W-25-13
<b>Project:</b>	WELD COUNTY	<b>TVD Reference:</b>	KB 25' @ 4860.00usft
<b>Site:</b>	SEC 25-T4N-R65W	<b>MD Reference:</b>	KB 25' @ 4860.00usft
<b>Well:</b>	SHELTON 25W-25-13	<b>North Reference:</b>	True
<b>Wellbore:</b>	OWB	<b>Survey Calculation Method:</b>	Minimum Curvature
<b>Design:</b>	FINAL SURVEY	<b>Database:</b>	EDT_32Bit_ODBC

Survey										
Measured Depth (usft)	Inclination (°)	Azimuth (°)	Vertical Depth (usft)	+N/-S (usft)	+E/-W (usft)	Vertical Section (usft)	Dogleg Rate (°/100ft)	Build Rate (°/100ft)	Turn Rate (°/100ft)	
13,556.00	86.87	271.07	6,957.45	-1,014.84	-8,384.88	8,431.26	5.20	-2.34	4.65	
13,652.00	88.42	273.60	6,961.39	-1,010.93	-8,480.71	8,526.67	3.09	1.61	2.64	
13,747.00	89.64	273.45	6,963.00	-1,005.09	-8,575.51	8,620.94	1.29	1.28	-0.16	
13,842.00	90.46	274.54	6,962.92	-998.47	-8,670.28	8,715.12	1.44	0.86	1.15	
13,938.00	90.15	273.06	6,962.41	-992.11	-8,766.06	8,810.34	1.58	-0.32	-1.54	
14,032.00	91.78	272.68	6,960.82	-987.40	-8,859.93	8,903.74	1.78	1.73	-0.40	
14,128.00	90.88	270.99	6,958.59	-984.33	-8,955.85	8,999.30	1.99	-0.94	-1.76	
14,222.00	89.18	271.61	6,958.54	-982.20	-9,049.82	9,092.96	1.93	-1.81	0.66	
14,316.00	89.87	271.08	6,959.32	-979.99	-9,143.79	9,186.62	0.93	0.73	-0.56	
14,411.00	88.59	269.69	6,960.60	-979.35	-9,238.78	9,281.39	1.99	-1.35	-1.46	
14,506.00	88.49	268.99	6,963.02	-980.44	-9,333.74	9,376.24	0.74	-0.11	-0.74	
14,601.00	89.93	270.19	6,964.33	-981.12	-9,428.72	9,471.09	1.97	1.52	1.26	
14,697.00	89.08	270.46	6,965.16	-980.58	-9,524.72	9,566.87	0.93	-0.89	0.28	
14,792.00	90.14	269.23	6,965.81	-980.84	-9,619.71	9,661.70	1.71	1.12	-1.29	
14,887.00	87.63	267.81	6,967.66	-983.29	-9,714.65	9,756.61	3.04	-2.64	-1.49	
14,981.00	87.88	269.80	6,971.34	-985.25	-9,808.55	9,850.46	2.13	0.27	2.12	
15,076.00	87.41	271.94	6,975.24	-983.81	-9,903.46	9,945.10	2.30	-0.49	2.25	
15,171.00	88.57	272.95	6,978.57	-979.76	-9,998.31	10,039.52	1.62	1.22	1.06	
15,266.00	89.67	272.49	6,980.03	-975.25	-10,093.19	10,133.95	1.26	1.16	-0.48	
15,361.00	90.88	272.78	6,979.58	-970.88	-10,188.09	10,228.40	1.31	1.27	0.31	
15,456.00	90.08	272.35	6,978.78	-966.63	-10,282.99	10,322.86	0.96	-0.84	-0.45	
15,551.00	90.89	271.25	6,977.98	-963.65	-10,377.93	10,417.45	1.44	0.85	-1.16	
15,646.00	88.61	271.56	6,978.39	-961.32	-10,472.90	10,512.09	2.42	-2.40	0.33	
15,740.00	88.75	270.63	6,980.56	-959.52	-10,566.86	10,605.77	1.00	0.15	-0.99	
15,834.00	89.94	269.91	6,981.63	-959.08	-10,660.85	10,699.55	1.48	1.27	-0.77	
15,929.00	91.19	269.66	6,980.70	-959.44	-10,755.84	10,794.39	1.34	1.32	-0.26	
16,024.00	89.57	270.12	6,980.07	-959.62	-10,850.83	10,889.22	1.77	-1.71	0.48	
16,119.00	90.25	268.73	6,980.21	-960.57	-10,945.83	10,984.09	1.63	0.72	-1.46	
16,215.00	91.12	267.98	6,979.07	-963.33	-11,041.78	11,080.03	1.20	0.91	-0.78	
16,310.00	89.98	268.75	6,978.15	-966.04	-11,136.73	11,174.97	1.45	-1.20	0.81	
16,405.00	90.85	268.94	6,977.47	-967.95	-11,231.71	11,269.89	0.94	0.92	0.20	
16,500.00	88.70	267.94	6,977.84	-970.54	-11,326.67	11,364.83	2.50	-2.26	-1.05	
16,595.00	89.87	268.32	6,979.03	-973.64	-11,421.61	11,459.78	1.29	1.23	0.40	
16,690.00	88.20	268.74	6,980.63	-976.07	-11,516.56	11,554.70	1.81	-1.76	0.44	
16,784.00	88.45	272.81	6,983.37	-974.80	-11,610.49	11,648.38	4.34	0.27	4.33	
16,879.00	89.32	270.34	6,985.22	-972.19	-11,705.43	11,742.98	2.76	0.92	-2.60	
16,974.00	89.91	270.66	6,985.86	-971.36	-11,800.42	11,837.74	0.71	0.62	0.34	
17,069.00	90.87	270.03	6,985.21	-970.79	-11,895.42	11,932.53	1.21	1.01	-0.66	
17,164.00	89.96	271.01	6,984.53	-969.93	-11,990.41	12,027.29	1.41	-0.96	1.03	
17,259.00	88.27	270.82	6,985.99	-968.41	-12,085.38	12,121.99	1.79	-1.78	-0.20	
17,354.00	89.01	271.62	6,988.25	-966.39	-12,180.33	12,216.64	1.15	0.78	0.84	
17,449.00	87.81	270.51	6,990.88	-964.63	-12,275.27	12,311.30	1.72	-1.26	-1.17	
17,544.00	87.94	272.42	6,994.41	-962.20	-12,370.17	12,405.87	2.01	0.14	2.01	

## Survey Report

<b>Company:</b>	CRESTONE PEAK RESOURCES	<b>Local Co-ordinate Reference:</b>	Well SHELTON 25W-25-13
<b>Project:</b>	WELD COUNTY	<b>TVD Reference:</b>	KB 25' @ 4860.00usft
<b>Site:</b>	SEC 25-T4N-R65W	<b>MD Reference:</b>	KB 25' @ 4860.00usft
<b>Well:</b>	SHELTON 25W-25-13	<b>North Reference:</b>	True
<b>Wellbore:</b>	OWB	<b>Survey Calculation Method:</b>	Minimum Curvature
<b>Design:</b>	FINAL SURVEY	<b>Database:</b>	EDT_32Bit_ODBC

Survey									
Measured Depth (usft)	Inclination (°)	Azimuth (°)	Vertical Depth (usft)	+N/-S (usft)	+E/-W (usft)	Vertical Section (usft)	Dogleg Rate (°/100ft)	Build Rate (°/100ft)	Turn Rate (°/100ft)
17,640.00	88.75	269.90	6,997.18	-960.26	-12,466.11	12,501.50	2.76	0.84	-2.62
17,735.00	89.77	269.73	6,998.41	-960.56	-12,561.10	12,596.33	1.09	1.07	-0.18
17,830.00	90.51	269.70	6,998.18	-961.04	-12,656.09	12,691.18	0.78	0.78	-0.03
17,925.00	88.61	268.75	6,998.90	-962.32	-12,751.08	12,786.07	2.24	-2.00	-1.00
18,019.00	89.10	267.60	7,000.78	-965.31	-12,845.01	12,880.00	1.33	0.52	-1.22
18,115.00	88.69	268.86	7,002.63	-968.28	-12,940.94	12,975.94	1.38	-0.43	1.31
18,209.00	89.66	270.69	7,003.99	-968.65	-13,034.93	13,069.77	2.20	1.03	1.95
18,304.00	90.87	269.64	7,003.55	-968.37	-13,129.92	13,164.57	1.69	1.27	-1.11
18,399.00	89.13	269.79	7,003.55	-968.85	-13,224.92	13,259.42	1.84	-1.83	0.16
18,493.00	89.96	269.43	7,004.30	-969.49	-13,318.91	13,353.28	0.96	0.88	-0.38
18,588.00	88.73	270.95	7,005.38	-969.17	-13,413.90	13,448.07	2.06	-1.29	1.60
18,682.00	89.69	268.60	7,006.68	-969.54	-13,507.88	13,541.90	2.70	1.02	-2.50
18,776.00	87.72	268.40	7,008.80	-972.00	-13,601.82	13,635.81	2.11	-2.10	-0.21
18,872.00	88.42	269.52	7,012.04	-973.74	-13,697.75	13,731.66	1.38	0.73	1.17
19,062.00	89.08	269.64	7,016.18	-975.13	-13,887.70	13,921.34	0.35	0.35	0.06
19,157.00	89.68	268.52	7,017.21	-976.66	-13,982.68	14,016.24	1.34	0.63	-1.18
19,251.00	88.47	271.11	7,018.73	-976.96	-14,076.66	14,110.06	3.04	-1.29	2.76
19,346.00	89.38	271.02	7,020.51	-975.20	-14,171.62	14,204.74	0.96	0.96	-0.09
19,442.00	88.41	273.36	7,022.36	-971.53	-14,267.53	14,300.24	2.64	-1.01	2.44
19,537.00	88.84	272.89	7,024.64	-966.35	-14,362.36	14,394.57	0.67	0.45	-0.49
19,632.00	89.60	271.76	7,025.93	-962.50	-14,457.27	14,489.07	1.43	0.80	-1.19
19,727.00	90.32	269.48	7,026.00	-961.47	-14,552.26	14,583.82	2.52	0.76	-2.40
19,822.00	91.69	269.91	7,024.33	-961.98	-14,647.24	14,678.65	1.51	1.44	0.45
19,918.00	89.74	270.44	7,023.13	-961.68	-14,743.22	14,774.44	2.10	-2.03	0.55
20,013.00	90.05	269.13	7,023.31	-962.04	-14,838.22	14,869.28	1.42	0.33	-1.38
20,108.00	89.45	272.60	7,023.72	-960.61	-14,933.19	14,963.99	3.71	-0.63	3.65
20,203.00	90.27	271.96	7,023.96	-956.83	-15,028.12	15,058.50	1.09	0.86	-0.67
20,298.00	89.31	272.68	7,024.30	-952.98	-15,123.04	15,153.01	1.26	-1.01	0.76
20,393.00	90.28	274.59	7,024.64	-946.96	-15,217.84	15,247.27	2.25	1.02	2.01
20,444.00	90.55	272.90	7,024.27	-943.63	-15,268.73	15,297.86	3.36	0.53	-3.31
LAST SURVEY - 20444' MD, 7024' TVD									
20,513.00	90.55	272.90	7,023.61	-940.14	-15,337.64	15,366.42	0.00	0.00	0.00
EXTRAPOLATION TO TD - 20513' MD, 1149' FSL, 162' FWL SEC 27									



## Survey Report

<b>Company:</b>	CRESTONE PEAK RESOURCES	<b>Local Co-ordinate Reference:</b>	Well SHELTON 25W-25-13
<b>Project:</b>	WELD COUNTY	<b>TVD Reference:</b>	KB 25' @ 4860.00usft
<b>Site:</b>	SEC 25-T4N-R65W	<b>MD Reference:</b>	KB 25' @ 4860.00usft
<b>Well:</b>	SHELTON 25W-25-13	<b>North Reference:</b>	True
<b>Wellbore:</b>	OWB	<b>Survey Calculation Method:</b>	Minimum Curvature
<b>Design:</b>	FINAL SURVEY	<b>Database:</b>	EDT_32Bit_ODBC

Design Targets									
Target Name - hit/miss target - Shape	Dip Angle (°)	Dip Dir. (°)	TVD (usft)	+N/-S (usft)	+E/-W (usft)	Northing (usft)	Easting (usft)	Latitude	Longitude
LP-SHELTON 25W-13 - actual wellpath misses target center by 22.31usft at 7640.44usft MD (6907.22 TVD, -1019.17 N, -2472.72 E) - Point	0.00	0.00	6,905.00	-996.97	-2,472.94	1,345,771.84	3,247,683.66	40.279140°N	104.612252°W
PBHL-SHELTON 25W-1 - actual wellpath misses target center by 18.90usft at 20513.00usft MD (7023.61 TVD, -940.14 N, -15337.64 E) - Point	0.00	0.00	7,010.00	-935.50	-15,349.91	1,345,703.11	3,234,807.28	40.279296°N	104.658403°W

Design Annotations					
Measured Depth (usft)	Vertical Depth (usft)	Local Coordinates			
		+N/-S (usft)	+E/-W (usft)	Comment	
6,886.00	6,500.76	-923.33	-1,900.94	KOP - 6886' MD, 6501' TVD	
7,632.00	6,906.29	-1,019.17	-2,464.33	HZ LANDING PNT - 7632' MD, 6906' TVD	
7,640.67	6,907.24	-1,019.17	-2,472.94	~2468' X-OVER PNT - 7640.67' MD, 1134' FSL, 2468' FWL SEC 25	
20,444.00	7,024.27	-943.63	-15,268.73	LAST SURVEY - 20444' MD, 7024' TVD	
20,513.00	7,023.61	-940.14	-15,337.64	EXTRAPOLATION TO TD - 20513' MD, 1149' FSL, 162' FWL SEC 27	

Checked By: _____	Approved By: _____	Date: _____
-------------------	--------------------	-------------