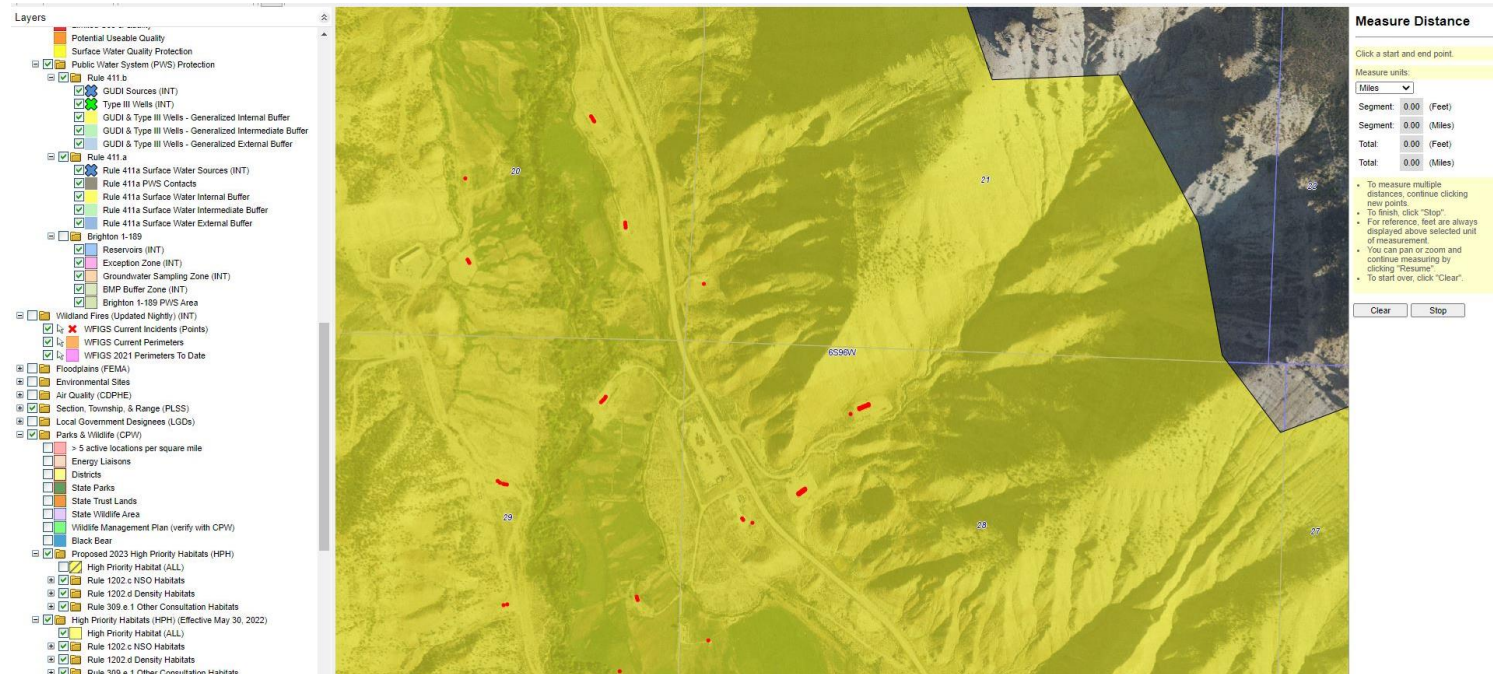


Stormwater Management and Erosion control

Location Name: CAERUS PICEANCE LLC N. PARACHUTE-66S96W /28NENW

Location #: 335200



Location Overview: Location is located in a high priority habitat area.

Section/Township/Range: 28 6S96W

Stormwater Management and Erosion control
Location Name: CAERUS PICEANCE LLC N. PARACHUTE-66S96W /28NENW
Location #: 335200



Northwest corner of location.



Northeast corner of location.



Southwest corner of location.



Southeast corner of location.

Stormwater Management and Erosion control

Location Name: CAERUS PICEANCE LLC N. PARACHUTE-66S96W /28NENW

Location #: 335200



Photo #9840 Location lacks stabilization



Photo #9844 Location lacks stabilization

Stormwater Management and Erosion control
Location Name: CAERUS PICEANCE LLC N. PARACHUTE-66S96W /28NENW
Location #: 335200



Photo #9848 Location lacks stabilization



Photo #9850 Location lacks stabilization.

Stormwater Management and Erosion control
Location Name: CAERUS PICEANCE LLC N. PARACHUTE-66S96W /28NENW
Location #: 335200



Photo #9853 Insufficient stock piled soils BMPs



Photo #9854 Insufficient stock piled soils BMPs

Stormwater Management and Erosion control
Location Name: CAERUS PICEANCE LLC N. PARACHUTE-66S96W /28NENW
Location #: 335200

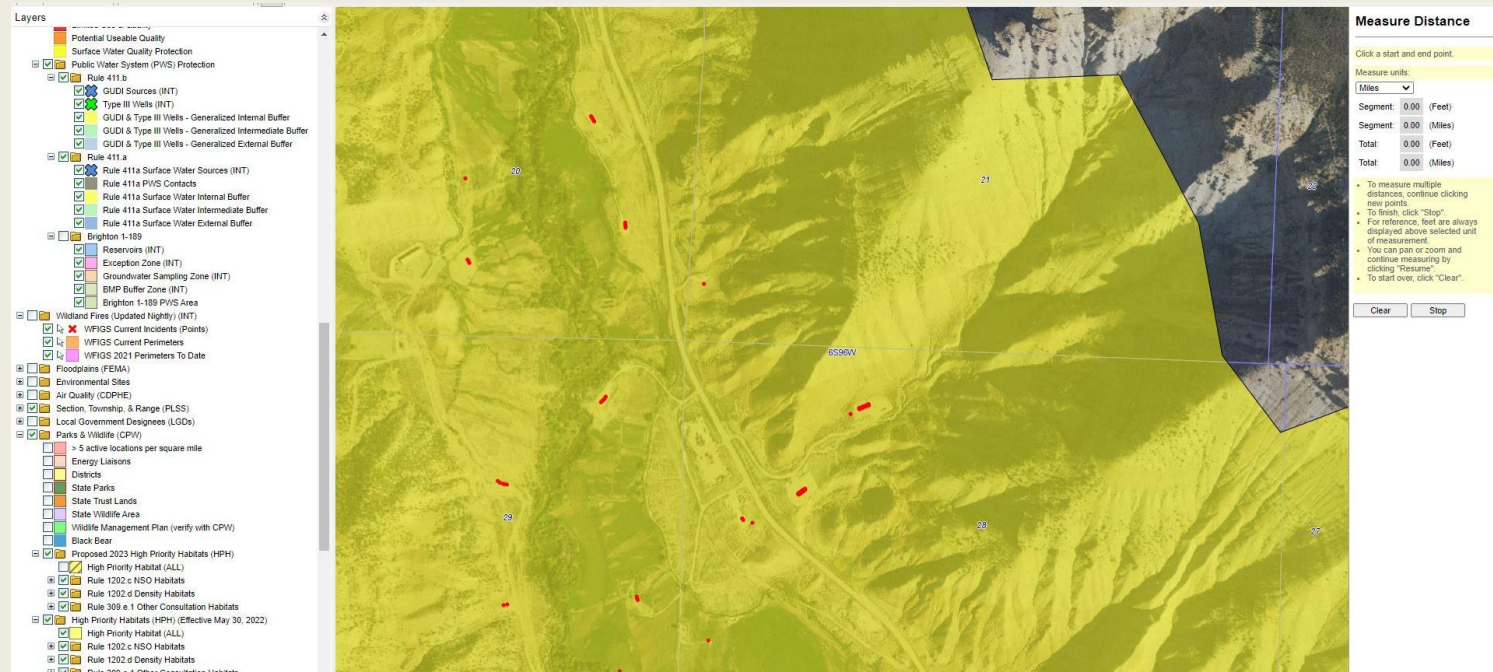


Photo #9855 Insufficient stockpiled soil BMPs

Stormwater Management and Erosion control

Access Road/Assoc. Location Name: CAERUS PICEANCE LLC N. PARACHUTE-66S96W /28NENW

Access Road/Assoc. Location #: 335200



Access Road overview: Access road is located in a high priority habitat area.
Section/Township/Range: 28 6S96W

Stormwater Management and Erosion control

Access Road/Assoc. Location Name: CAERUS PICEANCE LLC N. PARACHUTE-66S96W /28NENW

Access Road/Assoc. Location #: 335200



Photo #9859 Access road lacks stabilization



Photo #9860 Access road lacks stabilization

Stormwater Management and Erosion control

Access Road/Assoc. Location Name: CAERUS PICEANCE LLC N. PARACHUTE-66S96W /28NENW

Access Road/Assoc. Location #: 335200



Photo #9862 Culvert capacity insufficient.



Photo #9863 Culvert capacity insufficient.

Stormwater Management and Erosion control

Access Road/Assoc. Location Name: CAERUS PICEANCE LLC N. PARACHUTE-66S96W /28NENW

Access Road/Assoc. Location #: 335200



Photo #9864 -Culvert capacity insufficient.



Photo #9866 -Culvert capacity insufficient.