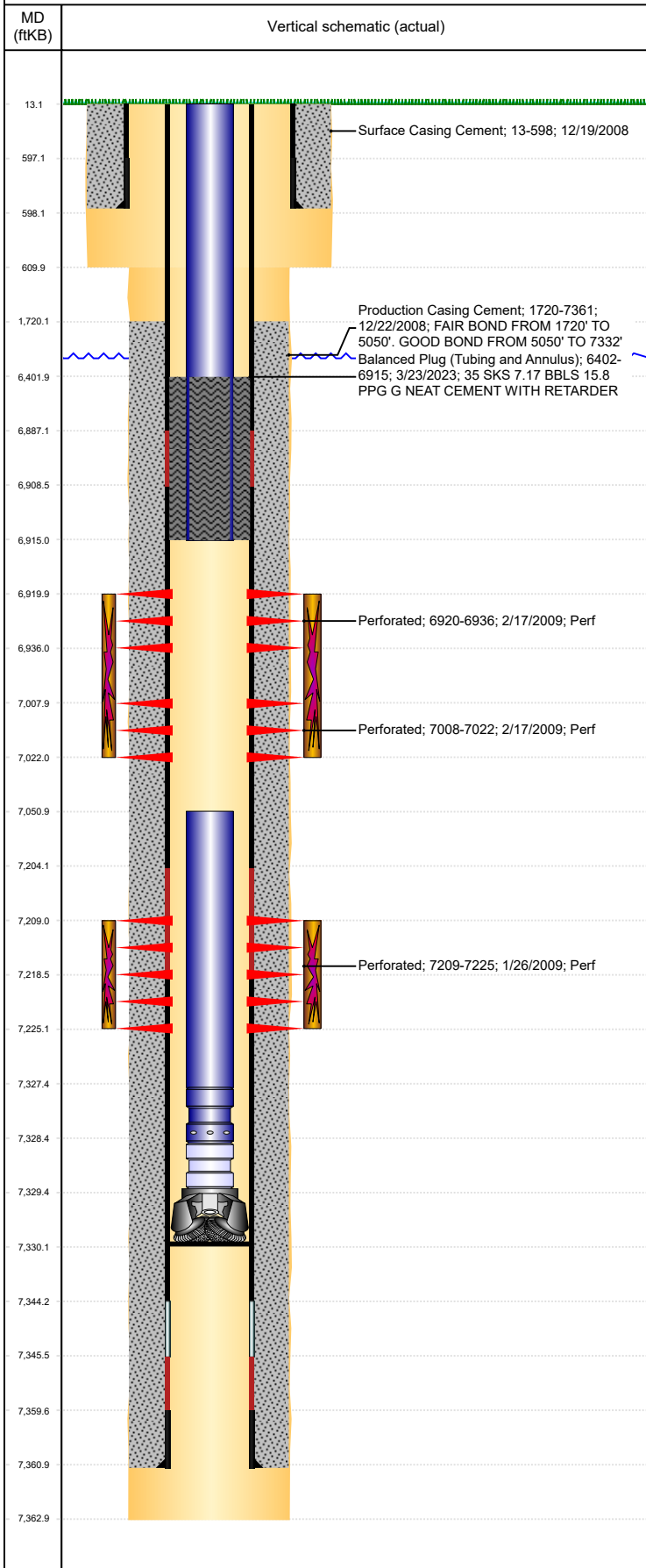




P&A Wellbore For State

Well Name: SCHMIDT G19-22

Land, Original Hole, 5/4/2023 12:18:28 PM



Well Header

Surface UWI 0512325821	Business Unit Rockies	Gov Auth Dist	Prod Tree Loc Land
Orig. KB to Gnd (ft) 13.00	Original Spud Date 12/19/2008	Abandon Date	Well Sub-Status TA
High... N			

Comment

318A.e. LOCATION!

Surface Location (Congressional)

Qtr 3 NE	Qtr 4 SE	Section 19	Township 4	Township N	Range 65	Range E/W W	Latitude (°) 40.29753588	Longitude (°) -104.701020959
-------------	-------------	---------------	---------------	---------------	-------------	----------------	-----------------------------	---------------------------------

Wellbore Sections

Section Des	Hole Size (in)	Act Top (ftKB)	Act Btm (ftKB)
SURFACE	12 1/4	13.0	610.0
PRODUCTION	7 7/8	610.0	7,363.0

Casing Strings

Csg Des	Run Date	OD (in)	Wt/Len (lb/ft)	Grade	Top Depth (MD) (ftKB)	Set Depth (MD) (ftKB)
Surface	12/19/2008	8 5/8	24.00	J-55	13	598
Production Casing	12/22/2008	4 1/2	11.60	M-80	13.1	7361

Cement

Des	Start Date	Top (ftKB)	Btm (ftKB)
Surface Casing Cement	12/19/2008	13.0	598.0
Production Casing Cement	12/22/2008	1,720.0	7,361.0
Balanced Plug (Tubing and Annulus)	3/23/2023	6,402.0	6,915.0

Zone Statuses

Zone Name	Status Date	Status	Fluid Type	Job	Prod Method
NIOBRARA	2/11/2010	PR	Water	Abandon Well - Temporary, 1/17/2023 00:00	Flowing
NIOBRARA	3/23/2023	Closed			
CODELL	3/10/2017	SI		Abandon Well - Temporary, 1/17/2023 00:00	
CODELL	3/23/2023	Closed			

Perforation Data

Linked Zone	Explosive Type	Entered Shot Total	Top (ftKB)	Btm (ftKB)	Date
NIOBRARA, Original Hole	A	64	6,920.0	6,936.0	2/17/2009
NIOBRARA, Original Hole	B	56	7,008.0	7,022.0	2/17/2009
CODELL, Original Hole	01	64	7,209.0	7,225.0	1/26/2009

Stimulation Intervals

Zone	Start Date	Top (ftKB)	Btm (ftKB)
NIOBRARA, Original Hole	3/2/2009	6,920.0	7,022.0
CODELL, Original Hole	2/11/2009	7,209.0	7,225.0

Other In Hole

Run Date	Des	Make	OD (in)	Top (ftKB)	Btm (ftKB)

Logs

Date	Type	Depth Top (MD) (ftKB)	Btm (ftKB)
12/22/2008	Caliper/Comp. Density/Neutron/GR/SP/ML	2,540	7,363.0
12/22/2008	DIL/GR/SP/Caliper	598	7,363.0
1/5/2009	CBL/CCL/GR	1,540	7,332.0

Plug Back Total Depths

Date	Type	Com	PBTD (ftKB)
2/13/2009	FILL	97' OF RAT HOLE	7,322
4/9/2009	PLUG REMNANTS	C/O WITH CONE BIT.	7,330