

## Inspection Photos

Location Name: TEP ROCKY MOUNTAIN LLC CLOUGH RMV 62-29 Pad

Location ID: 335252



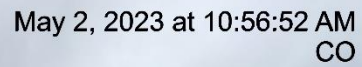
Photo # 6763 From entrance to location



Photo # 6764 Location

**Location Name: TEP ROCKY MOUNTAIN LLC CLOUGH RMV 62-29 Pad**  
**Location ID: 335252**

Location ID: 335252



May 2, 2023 at 10:57:15 AM  
CO

### Photo # 6766 Location



## Inspection Photos

Location Name: TEP ROCKY MOUNTAIN LLC CLOUGH RMV 62-29 Pad

Location ID: 335252



**Photo # 2311 From Inspection 708900114 conducted on 03/13/2023 Containment needs maintenance**



**Photo # 6770 Containment needs maintenance**

## Inspection Photos

Location Name: TEP ROCKY MOUNTAIN LLC CLOUGH RMV 62-29 Pad

Location ID: 335252



Photo # 2313 From Inspection 708900114 conducted on 03/13/2023 Containment needs maintenance



Photo # 6777 Containment needs maintenance



## Inspection Photos

Location Name: TEP ROCKY MOUNTAIN LLC CLOUGH RMV 62-29 Pad

Location ID: 335252



Photo # 6771 Containment needs maintenance

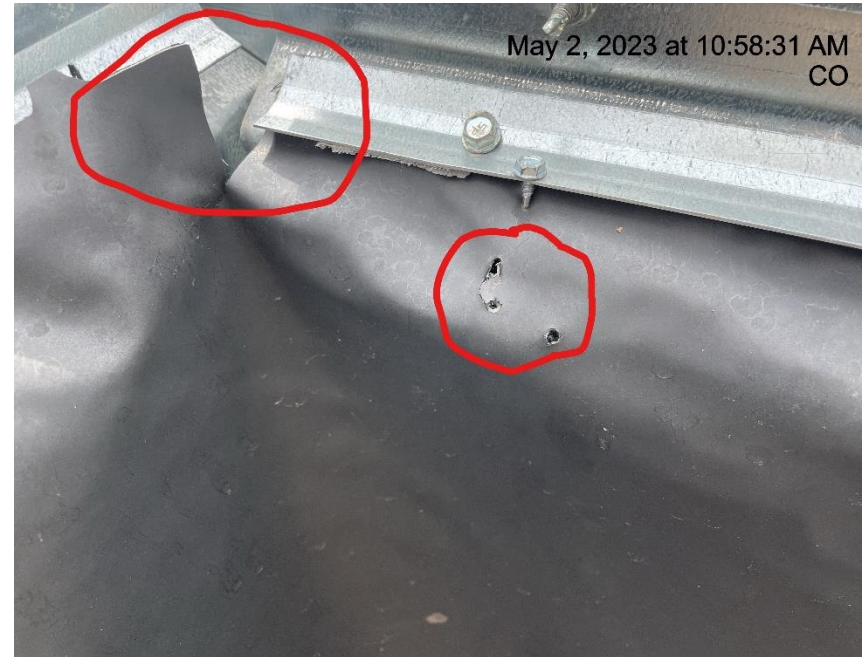


Photo # 6772 Containment needs maintenance



## Inspection Photos

Location Name: TEP ROCKY MOUNTAIN LLC CLOUGH RMV 62-29 Pad

Location ID: 335252



**Photo # 2316 From Inspection 708900114 conducted on 03/13/2023 Meter calibration info not conspicuously posted**



**Photo # 6787 Meter calibration info not conspicuously posted**



## Inspection Photos

Location Name: TEP ROCKY MOUNTAIN LLC CLOUGH RMV 62-29 Pad

Location ID: 335252



Photo # 2317 From Inspection 708900114 conducted on 03/13/2023 Meter calibration info not conspicuously posted

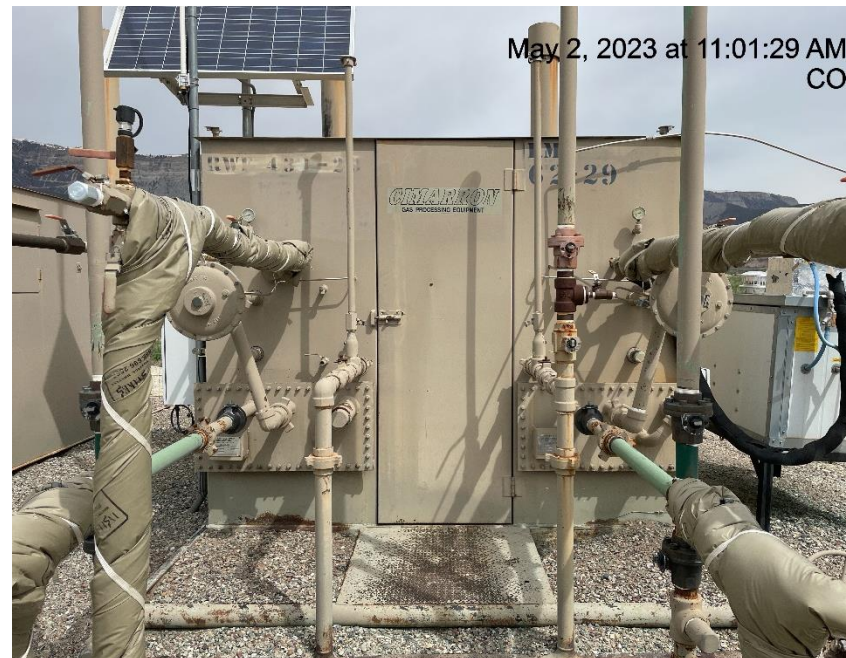


Photo # 6783 Meter calibration info not conspicuously posted

## Inspection Photos

Location Name: TEP ROCKY MOUNTAIN LLC CLOUGH RMV 62-29 Pad

Location ID: 335252



**Photo # 6776 Containment needs maintenance**