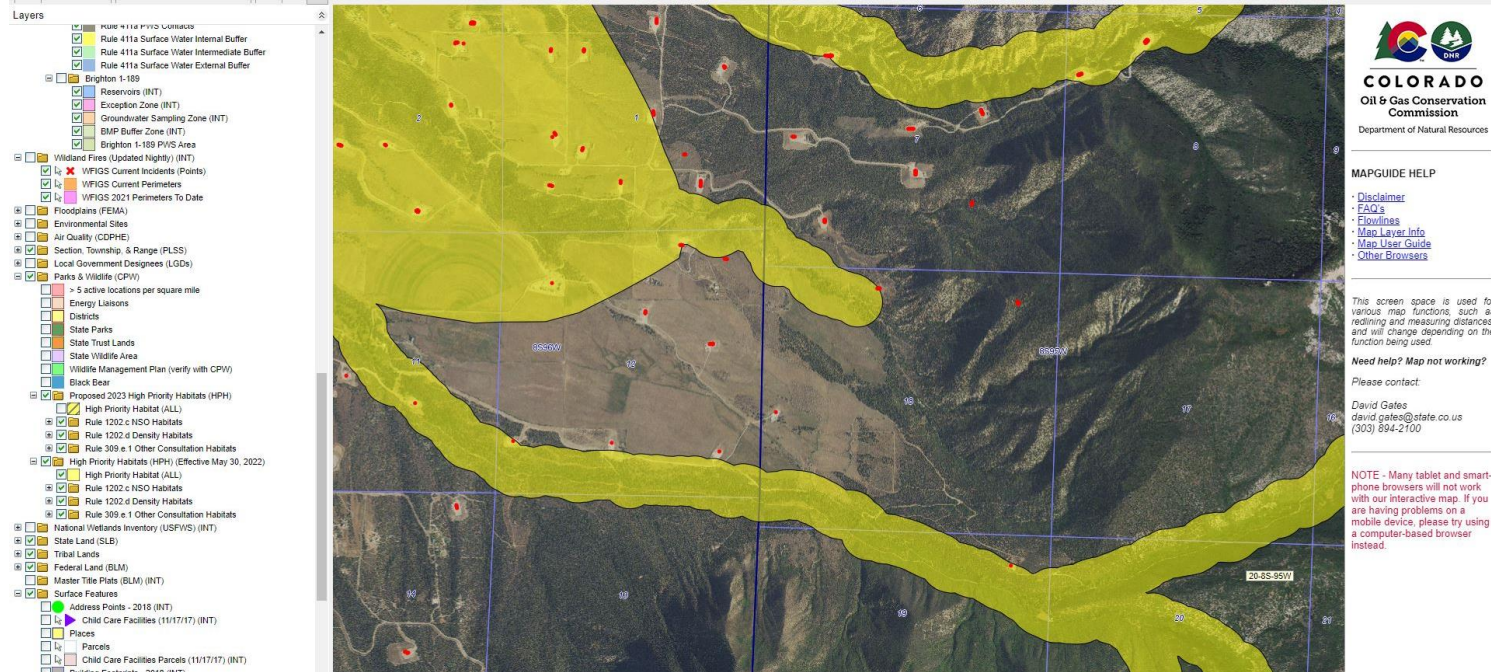


Stormwater Management and Erosion control

Location Name: CAERUS PICEANCE LLC HYRUP-68S95W /18NWSW

Location #: 312705



Location Overview: Location is located on the edge of a High priority habitat area.

Section/Township/Range:

Stormwater Management and Erosion control
Location Name: CAERUS PICEANCE LLC HYRUP-68S95W /18NWSW
Location #: 312705



Photo #9757



Photo #9758

Stormwater Management and Erosion control
Location Name: CAERUS PICEANCE LLC HYRUP-68S95W /18NWSW
Location #: 312705



Photo #9760 Location lacks stabilization.



Photo #9761 Location lacks stabilization.

Stormwater Management and Erosion control
Location Name: CAERUS PICEANCE LLC HYRUP-68S95W /18NWSW
Location #: 312705



Photo #9762 Location lacks stabilization.



Photo #9763 Location lacks stabilization.

Stormwater Management and Erosion control
Location Name: CAERUS PICEANCE LLC HYRUP-68S95W /18NWSW
Location #: 312705

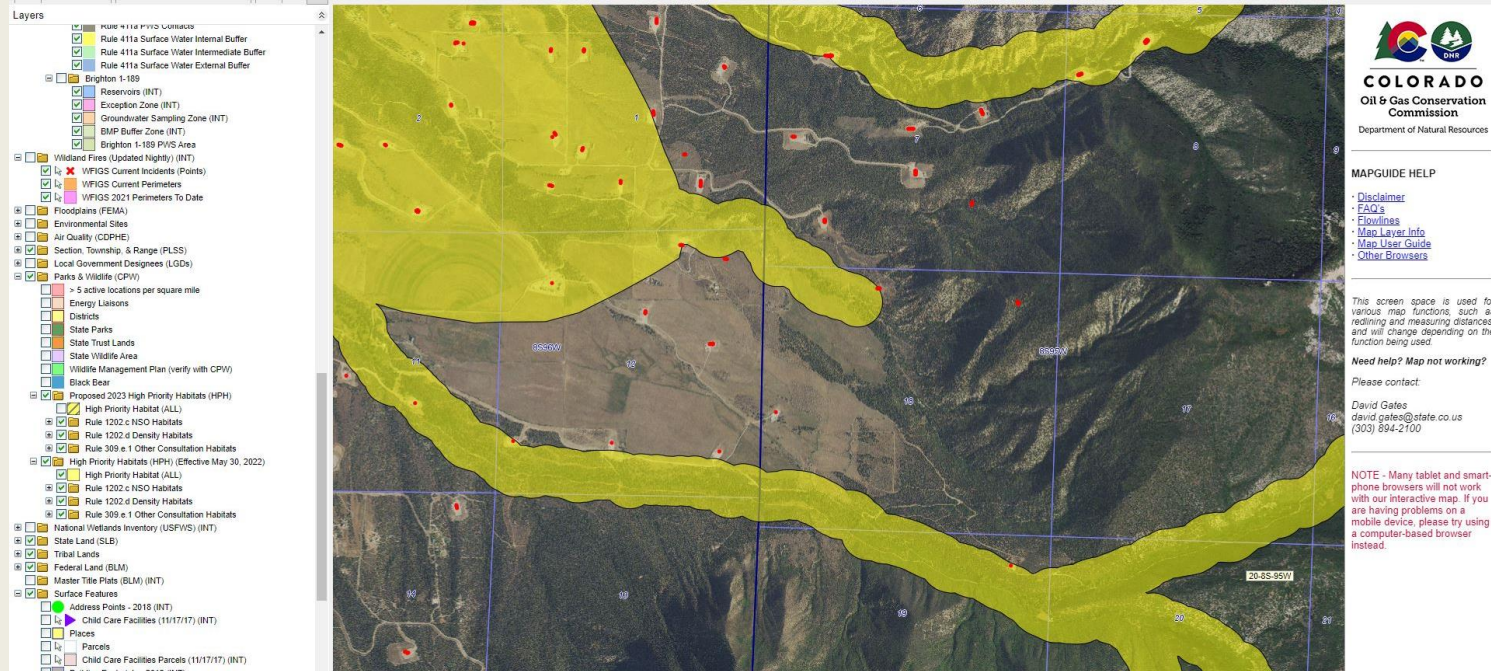


Photo #9766 Insufficient tracking BMP at entrance to location to minimize the transport of sediment off location.

Stormwater Management and Erosion control

Access Road/Assoc. Location Name: CAERUS PICEANCE LLC HYRUP-68S95W /18NWSW

Access Road/Assoc. Location #: 312705



Access Road overview: Access road is located on the edge of a High priority habitat area.

Section/Township/Range: 18 8S95W

Stormwater Management and Erosion control

Access Road/Assoc. Location Name:

Access Road/Assoc. Location #: 312705



Photo #9767 Access road lacks stabilization.



Photo #9768 Access road lacks stabilization.

Stormwater Management and Erosion control

Access Road/Assoc. Location Name:

Access Road/Assoc. Location #: 312705



Photo #9769 Access road lacks stabilization.