

UNGRADED ELEVATION: 4165.4'  
FINAL ELEVATION: 4164.8'  
AREA OF DISTURBANCE: 3.5± ACRES  
AREA OF WORKING PAD SURFACE: 2.1± ACRES

UPRC #1 EIGER 14-11

N

500

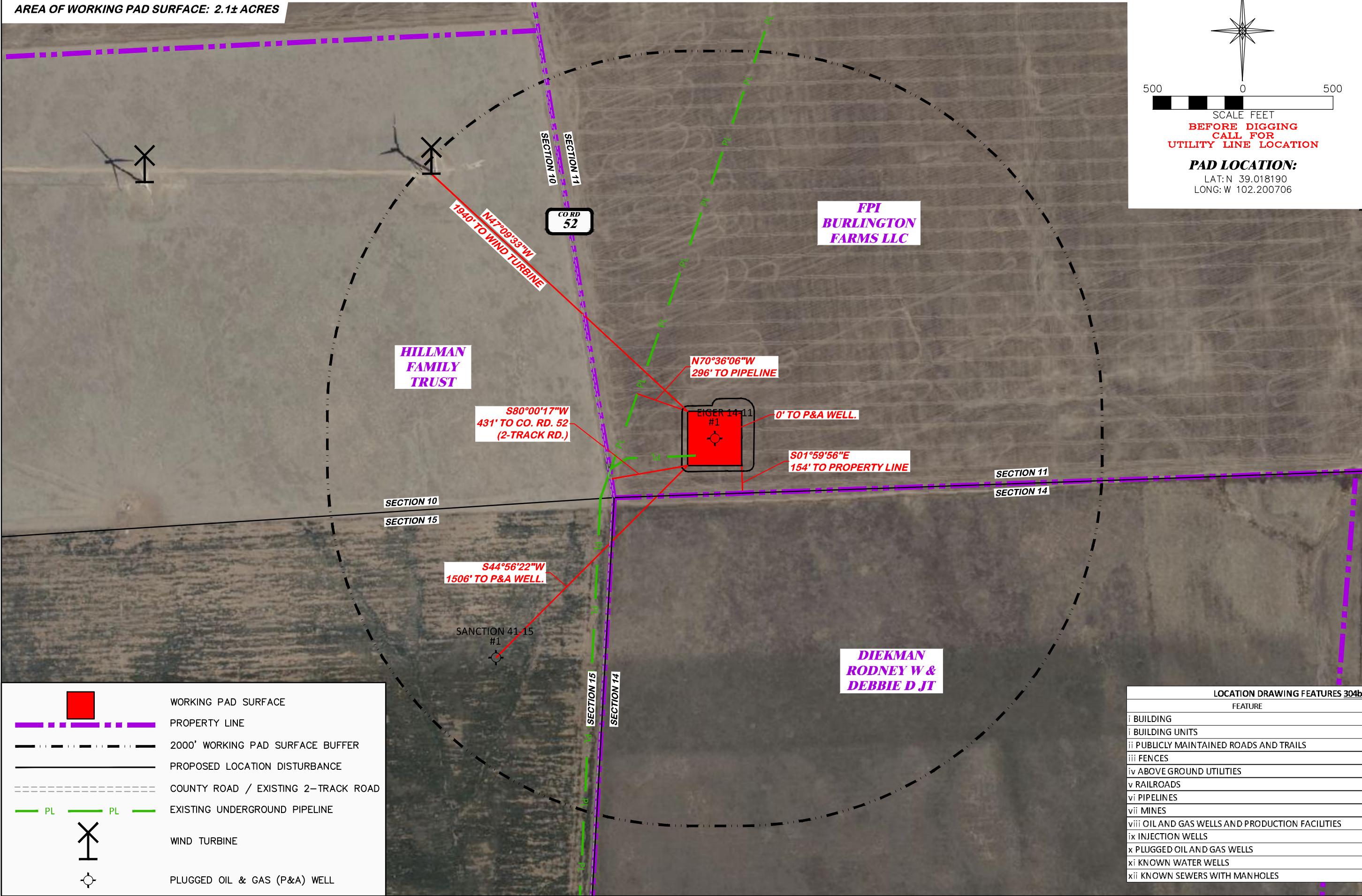
0

500

SCALE FEET

BEFORE DIGGING  
CALL FOR  
UTILITY LINE LOCATION

PAD LOCATION:  
LAT: N 39.018190  
LONG: W 102.200706



WORKING PAD SURFACE

PROPERTY LINE

2000' WORKING PAD SURFACE BUFFER

PROPOSED LOCATION DISTURBANCE

COUNTY ROAD / EXISTING 2-TRACK ROAD

PL

PL

EXISTING UNDERGROUND PIPELINE

WIND TURBINE

PLUGGED OIL & GAS (P&A) WELL

LOCATION DRAWING FEATURES 304b(7)A	
FEATURE	DISTANCE
i BUILDING	5280'
ii BUILDING UNITS	5280'
iii PUBLICLY MAINTAINED ROADS AND TRAILS	431' W
iv FENCES	5280'
v ABOVE GROUND UTILITIES	1940' NW
vi RAILROADS	5280'
vii PIPELINES	AS SHOWN
viii MINES	5280'
ix OIL AND GAS WELLS AND PRODUCTION FACILITIES	5280'
x INJECTION WELLS	5280'
xi PLUGGED OIL AND GAS WELLS	AS SHOWN
xii KNOWN WATER WELLS	5280'
xiii KNOWN SEWERS WITH MANHOLES	5280'

LOCATION DRAWING

WAVETECH HELIUM, INC.  
UPRC #1 EIGER 14-11  
SWSW, SECTION 11, T. 12 S., R. 43 W., 6th P.M.,  
CHEYENNE COUNTY, COLORADO

DRG

RIFFIN & ASSOCIATES, INC.

(307) 962-5028

1414 ELK ST., ROCK SPRINGS, WY 82901

DRAWN: 7/14/22 - JMB

REVISED: 4/14/23 - JMB

COGCC COMMENTS REVISIONS

SCALE: 1" = 500'

DRG JOB No. 22265

304b(7)A LOC AERIAL