

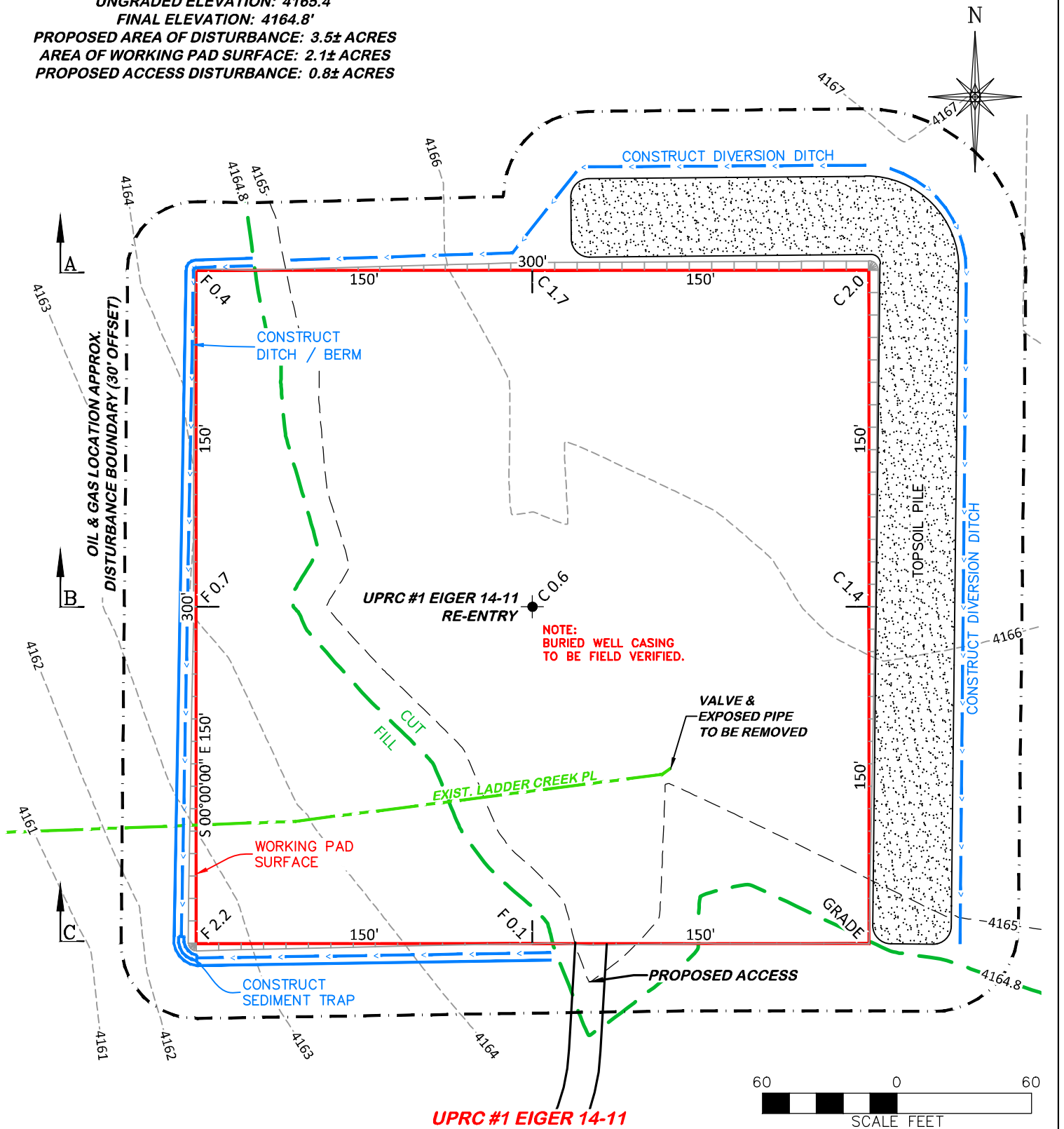
UNGRADED ELEVATION: 4165.4'

FINAL ELEVATION: 4164.8'

PROPOSED AREA OF DISTURBANCE: 3.5± ACRES

AREA OF WORKING PAD SURFACE: 2.1± ACRES

PROPOSED ACCESS DISTURBANCE: 0.8± ACRES



NOTE: THE EARTH QUANTITIES ON THIS DRAWING ARE ESTIMATED AND THE USE OF SAID QUANTITIES IS AT THE RESPONSIBILITY OF THE USER.



RIFFIN & ASSOCIATES, INC.

(307) 362-5028

1414 ELK ST., ROCK SPRINGS, WY 82901

DRAWN: 7/14/22 - JMB

SCALE: 1" = 60'

REVISED: 4/14/23 - JMB

DRG JOB No. 22265

COGCC COMMENTS REVISIONS

304b(7)Bi CONST

CONSTRUCTION LAYOUT DRAWING 1 OF 5

PLAN - PROPOSED GRADING

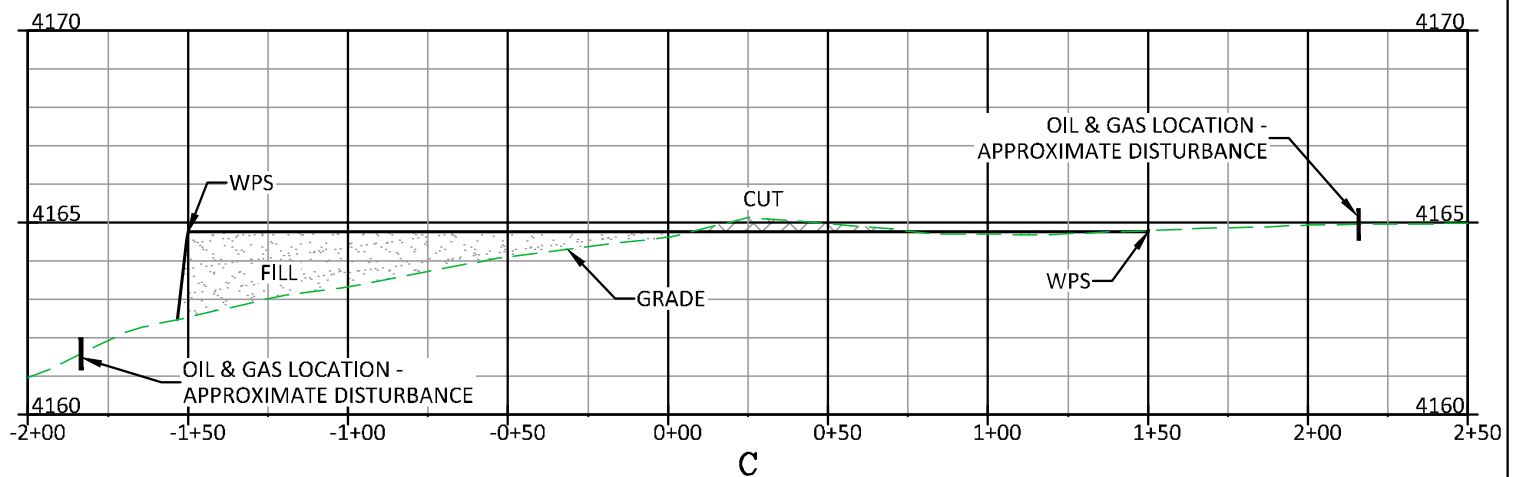
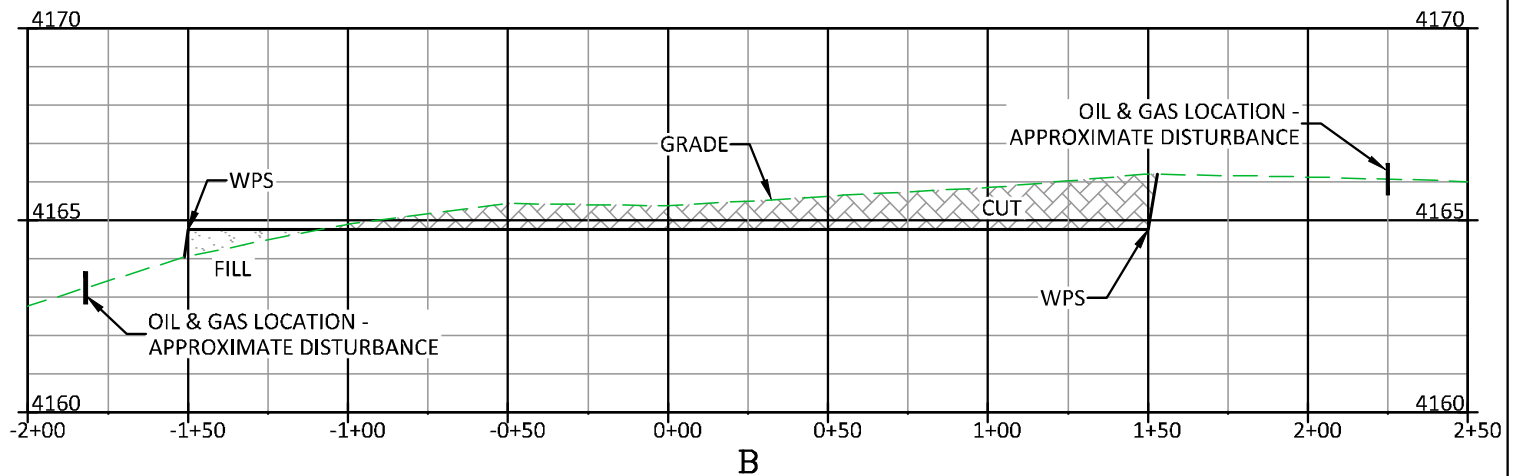
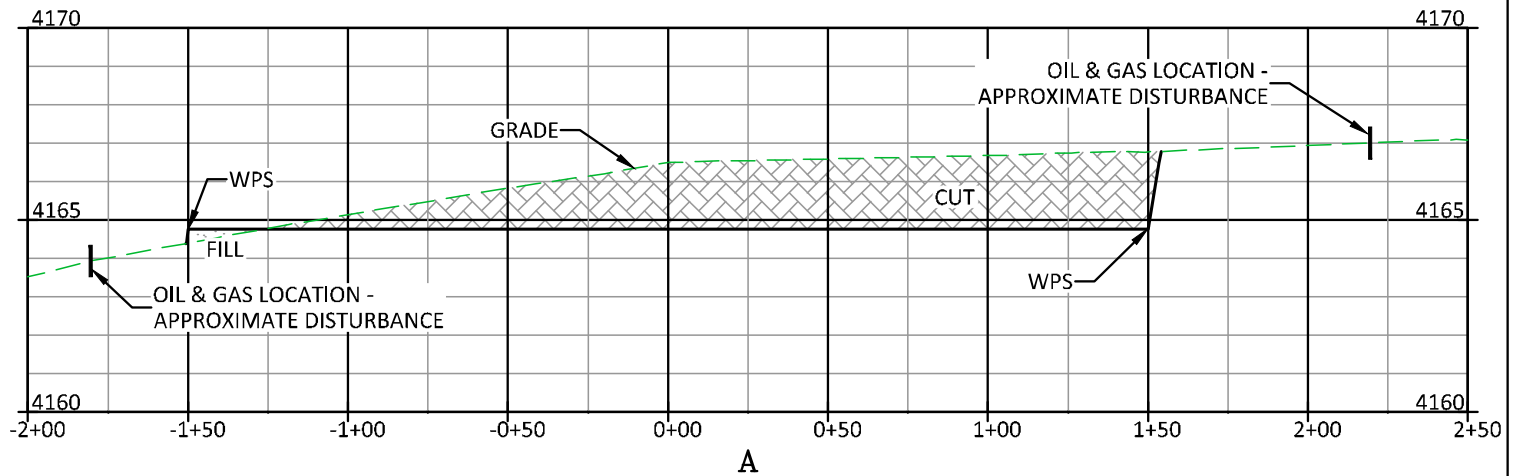
WAVETECH HELIUM, INC.

UPRC #1 EIGER 14-11

**SWSW, SECTION 11, T. 12 S., R. 43 W., 6th P.M.,
CHEYENNE COUNTY, COLORADO**

ESTIMATED EARTHWORK

ITEM	CUT	FILL	TOPSOIL	EXCESS
PAD	2,225 CY	493 CY	1,710 CY	22 CY
PIT	NONE			NONE
TOTALS	2,225 CY	493 CY	1,710 CY	22 CY



CUT SLOPES - 2:1

FILL SLOPES - 1.5:1

UPRC #1 EIGER 14-11

DRG **RIFFIN & ASSOCIATES, INC.**
 (307) 362-5028 1414 ELK ST., ROCK SPRINGS, WY 82901

DRAWN: 7/14/22 - JMB	SCALE: H - 1" = 60' V - 1" = 5'
REVISED: NA	DRG JOB No. 22265
	304b(7)Bi XSEC

CONSTRUCTION LAYOUT DRAWING 2 OF 5

**CONSTRUCTION LAYOUT DRAWING
CROSS-SECTIONS**

WAVETECH HELIUM, INC.

UPRC #1 EIGER 14-11

**SWSW, SECTION 11, T. 12 S., R. 43 W., 6th P.M.,
CHEYENNE COUNTY, COLORADO**

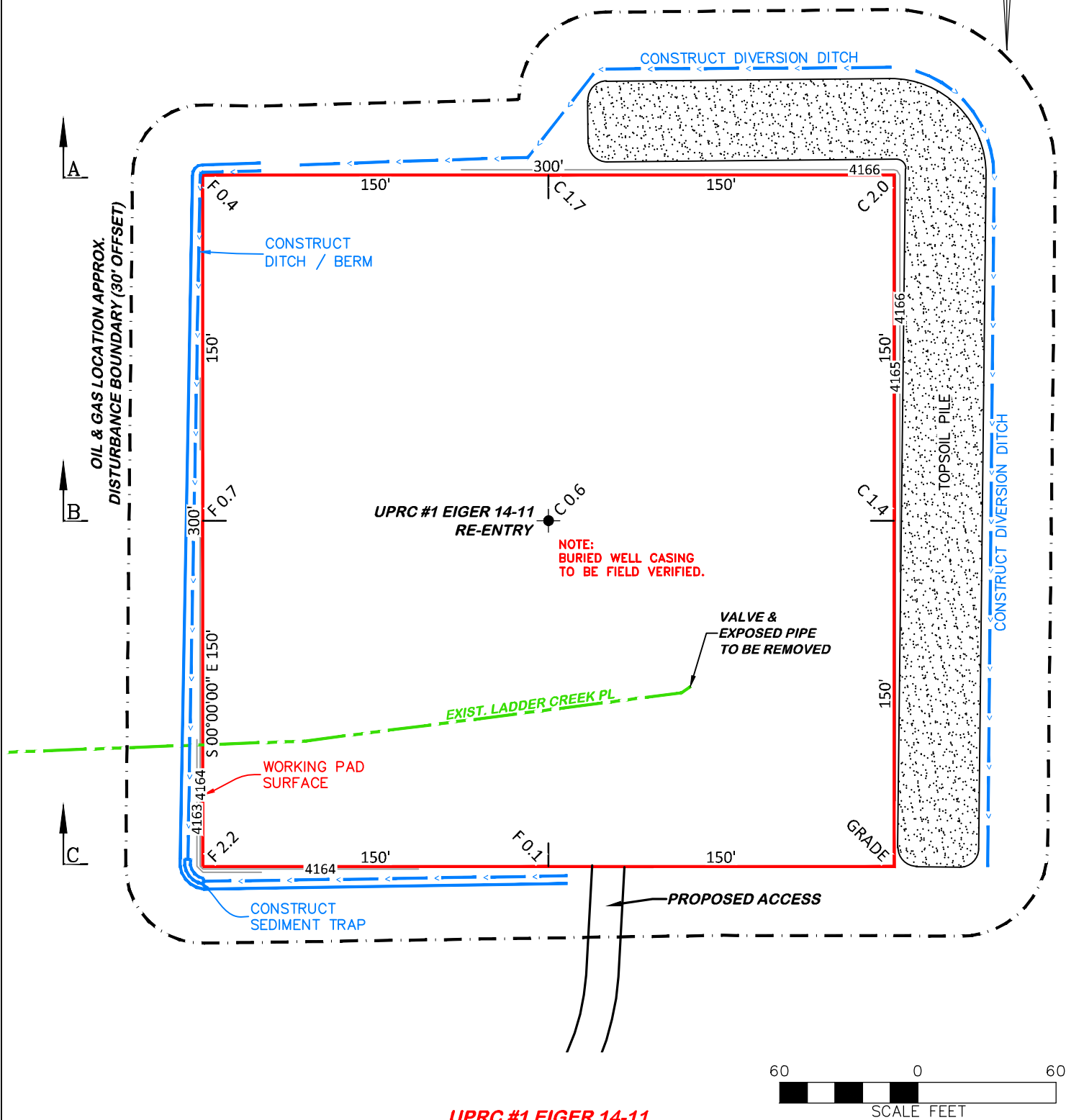
UNGRADED ELEVATION: 4165.4'

FINAL ELEVATION: 4164.8'

PROPOSED AREA OF DISTURBANCE: 3.5± ACRES

AREA OF WORKING PAD SURFACE: 2.1± ACRES

PROPOSED ACCESS DISTURBANCE: 0.8± ACRES



UPRC #1 EIGER 14-11

CONSTRUCTION LAYOUT DRAWING 3 OF 5



RIFFIN & ASSOCIATES, INC.

(307) 362-5028

1414 ELK ST., ROCK SPRINGS, WY 82901

DRAWN: 7/14/22 - JMB

SCALE: 1" = 60'

REVISED: 4/14/23 - JMB

DRG JOB No. 22265

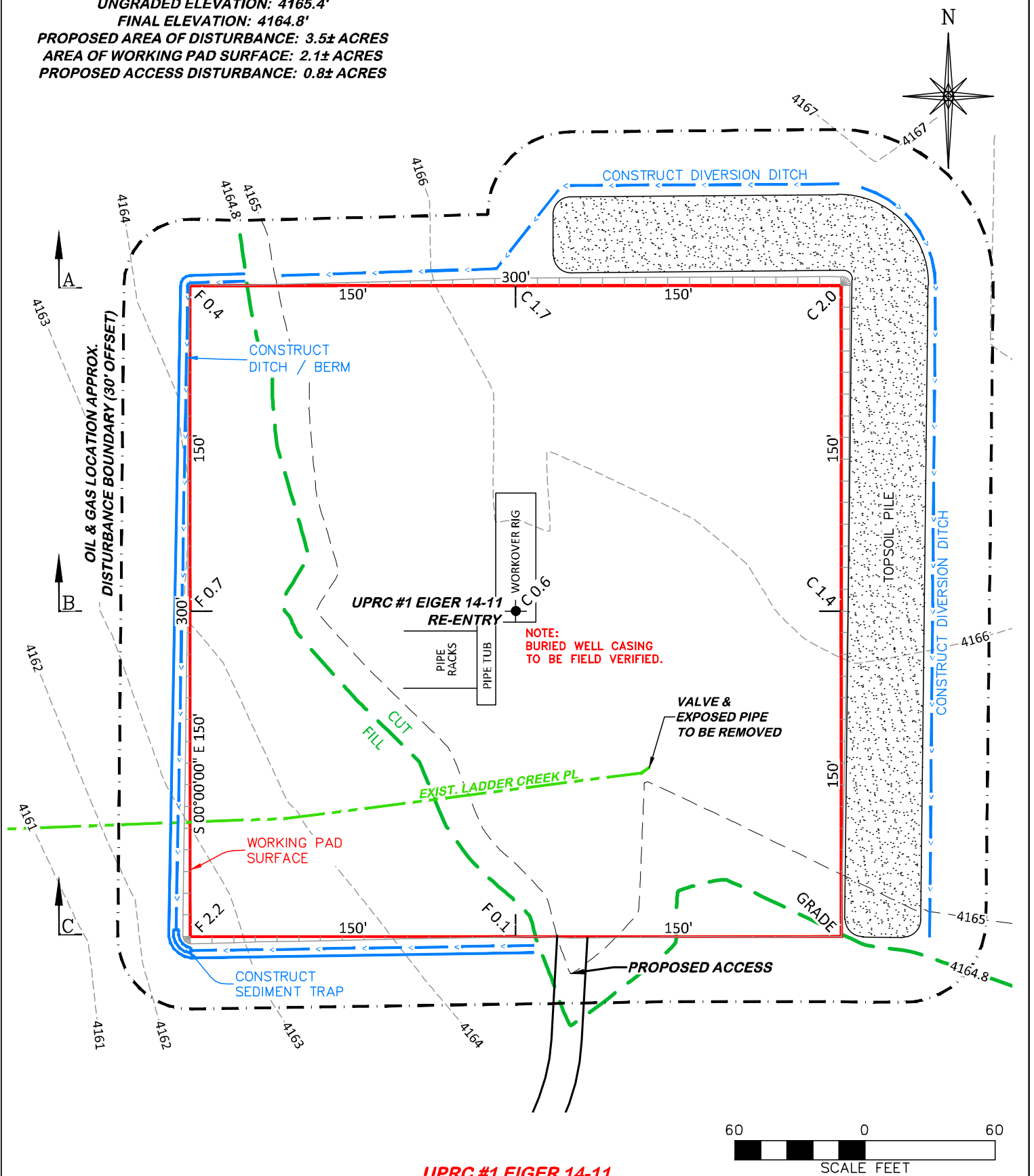
COGCC COMMENTS REVISIONS

304b(7)Bi DSGN CONT

PROPOSED PAD CONTOURS
WAVETECH HELIUM, INC.
UPRC #1 EIGER 14-11
SWSW, SECTION 11, T. 12 S., R. 43 W., 6th P.M.,
CHEYENNE COUNTY, COLORADO

FINAL ELEVATION: 4164.8'

PROPOSED ACCESS DISTURBANCE: 0.8± ACRES



UPRC #1 EIGER 14-11

CONSTRUCTION LAYOUT DRAWING 4 OF 5

UPRC #1 EIGER 14-11

**SWSW, SECTION 11, T. 12 S., R. 43 W., 6th P.M.,
CHEYENNE COUNTY, COLORADO**



RIFFIN & ASSOCIATES, INC.
1414 ELK ST., ROCK SPRINGS, WY 82901

(307) 362-5028

DRAWN: 7/14/22 - JMB

SCALE: 1" = 60'

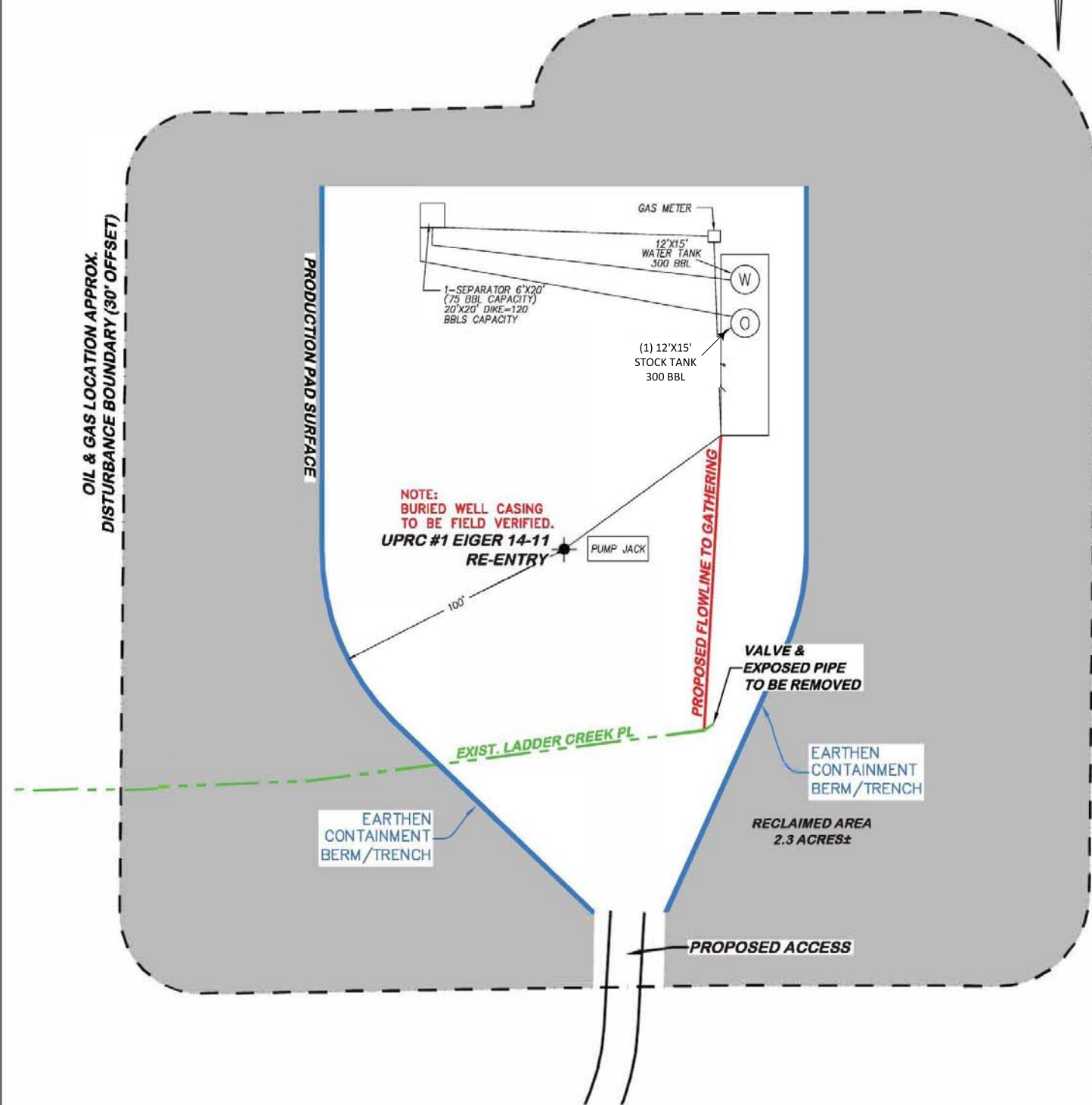
REVISED: 10/31/22 - JMB

DRG JOB No. 22265

COGCC COMMENTS REVISIONS

304b(7)Bii RIG

APPROXIMATE DISTURBANCE AREA 3.5± ACRES
 PROPOSED RECLAMATION AREA: 2.3± ACRES
 INTERIM RECLAMATION DISTURBANCE: 1.2± ACRES



UPRC #1 EIGER 14-11



RIFFIN & ASSOCIATES, INC.

(307) 362-5028

1414 ELK ST., ROCK SPRINGS, WY 82901

DRAWN: 7/14/22 - JMB

SCALE: 1" = 60'

REVISED: 7/29/22 - JMB

DRG JOB No. 22265

REVISED ACCESS

304b(7)Bv FACILITY

CONSTRUCTION LAYOUT DRAWING 5 OF 5

FACILITY LAYOUT DRAWING
 WAVETECH HELIUM, INC.

UPRC #1 EIGER 14-11

SWSW, SECTION 11, T. 12 S., R. 43 W., 6th P.M.,
 CHEYENNE COUNTY, COLORADO