

TEP
Hangs B
Location # 336022



Production equipment



Well heads



TEP
Hangs B
Location # 336022



ECD



Open cellar full of fluid



TEP
Hangs B
Location # 336022



Open cellar full of fluid



Debris



TEP
Hangs B
Location # 336022



Staining/ Debris



Staining/ Debris



TEP
Hangs B
Location # 336022



Lack of stabilization/compaction



Lack of stabilization/compaction



COLORADO
Oil & Gas Conservation
Commission
Department of Natural Resources

TEP
Hangs B
Location # 336022



Lack of stabilization/compaction



Lack of stabilization/compaction



TEP
Hangs B
Location # 336022



Tracking onto county road from location



Tracking onto county road from location



COLORADO
Oil & Gas Conservation
Commission
Department of Natural Resources

TEP
Hangs B
Location # 336022



Lack of stabilization/compaction



Tracking onto county road from location



COLORADO
Oil & Gas Conservation
Commission
Department of Natural Resources

TEP
Hangs B
Location # 336022

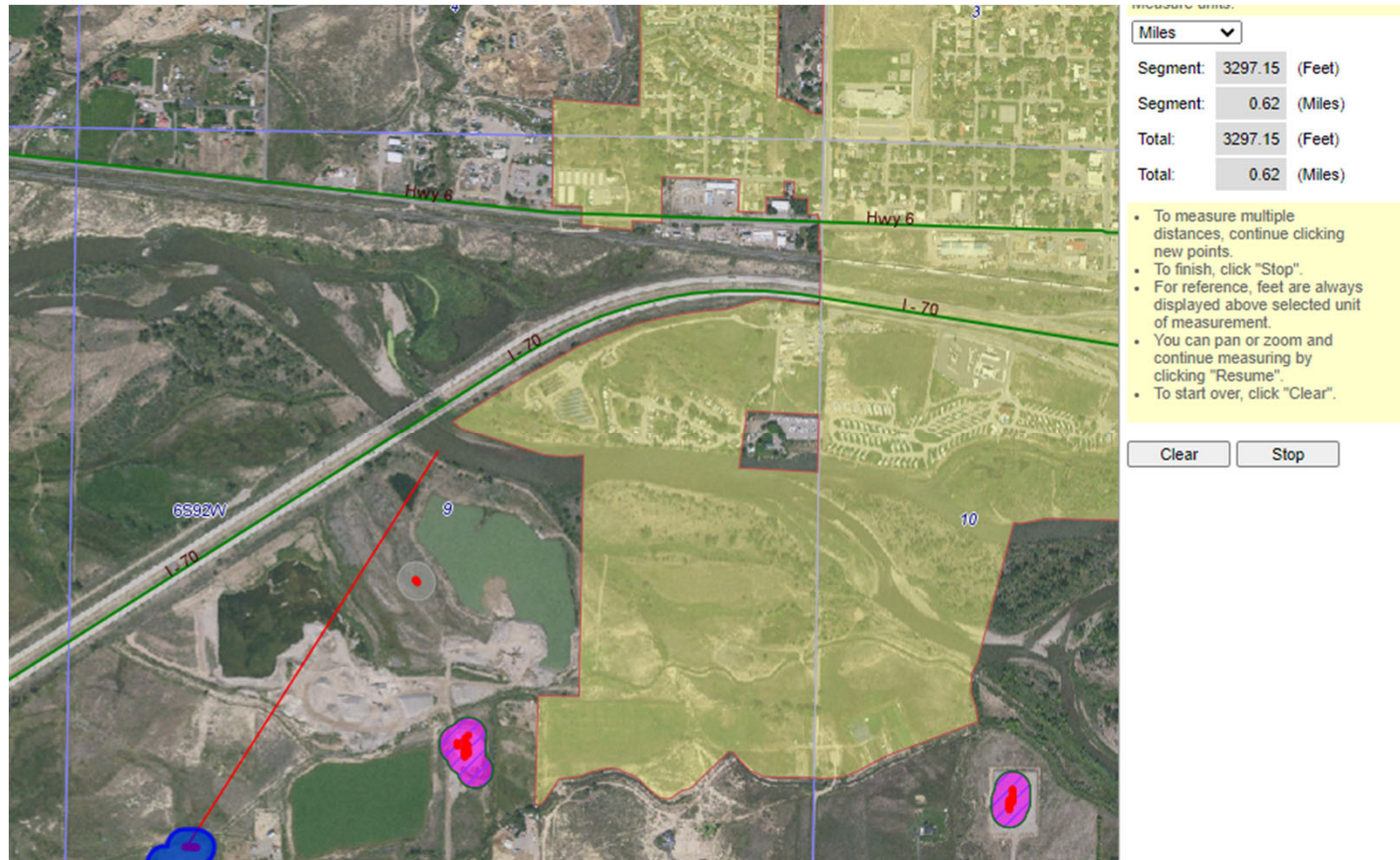


Tracking onto county road from location



Tracking onto county road from location

TEP
Hangs B
Location # 336022



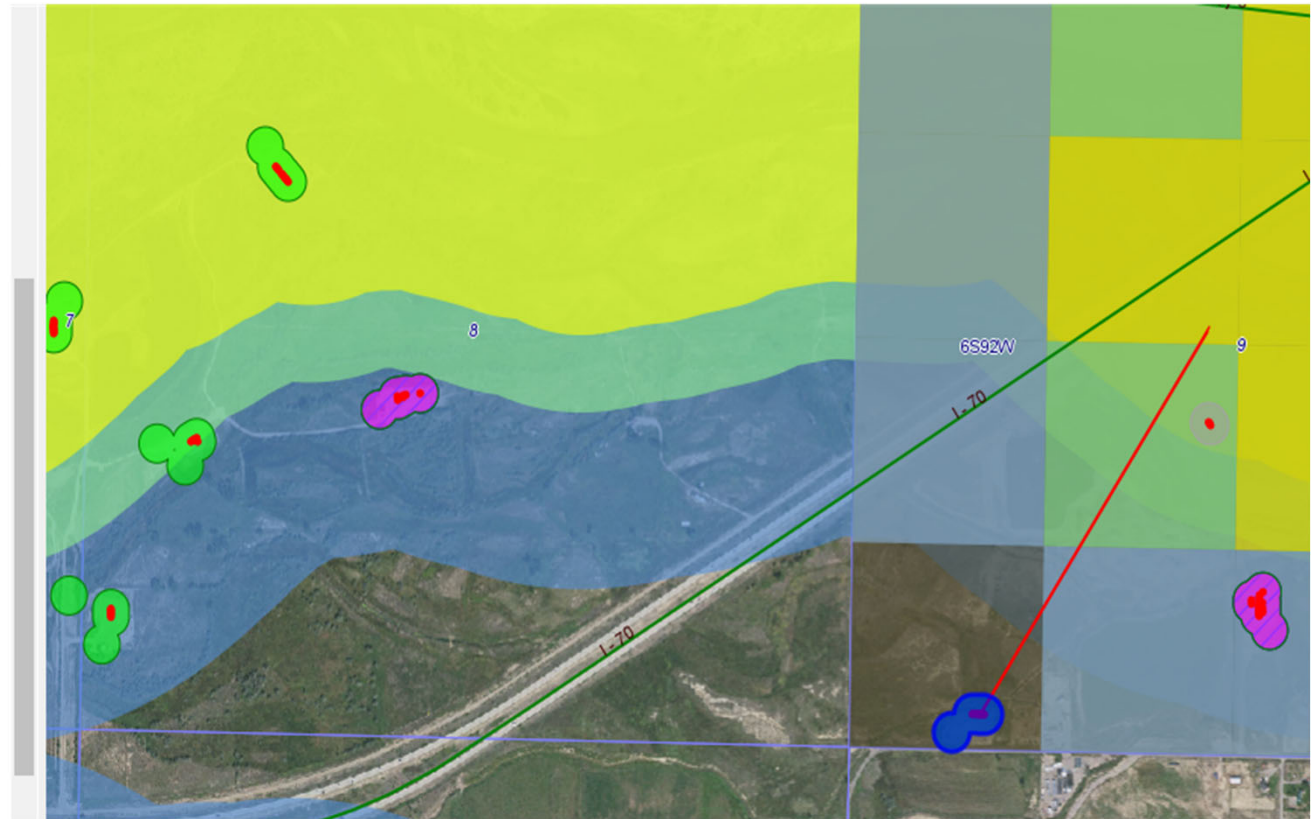
Approximately 3300 feet from the Colorado River



COLORADO
Oil & Gas Conservation
Commission
Department of Natural Resources

TEP Hangs B Location # 336022

- Surface Water Quality Protection
- Public Water System (PWS) Protection
- Rule 411.b
 - ☒ GUDI Sources (INT)
 - ☒ Type III Wells (INT)
 - ☒ GUDI & Type III Wells - Generalized Internal Buffer
 - ☒ GUDI & Type III Wells - Generalized Intermediate Buffer
 - ☒ GUDI & Type III Wells - Generalized External Buffer
 - Rule 411.a
 - ☒ Rule 411a Surface Water Sources (INT)
 - ☒ Rule 411a PWS Contacts
 - ☒ Rule 411a Surface Water Internal Buffer
 - ☒ Rule 411a Surface Water Intermediate Buffer
 - ☒ Rule 411a Surface Water External Buffer
 - Brighton 1-189
 - ☒ Reservoirs (INT)
 - ☒ Exception Zone (INT)
 - ☒ Groundwater Sampling Zone (INT)
 - ☒ BMP Buffer Zone (INT)
 - ☒ Brighton 1-189 PWS Area
 - Land Fires (Updated Nightly) (INT)
 - WFIGS Current Incidents (Points)
 - WFIGS Current Perimeters
 - WFIGS 2021 Perimeters To Date
 - Floodplains (FEMA)
 - Environmental Sites
 - Quality (CDPHE)
 - Section, Township, & Range (PLSS)
 - Local Government Designees (LGDs)
 - Fish & Wildlife (CPW)



Approximately 3300 feet from the Colorado River in
the 411 protection



COLORADO
Oil & Gas Conservation
Commission
Department of Natural Resources