

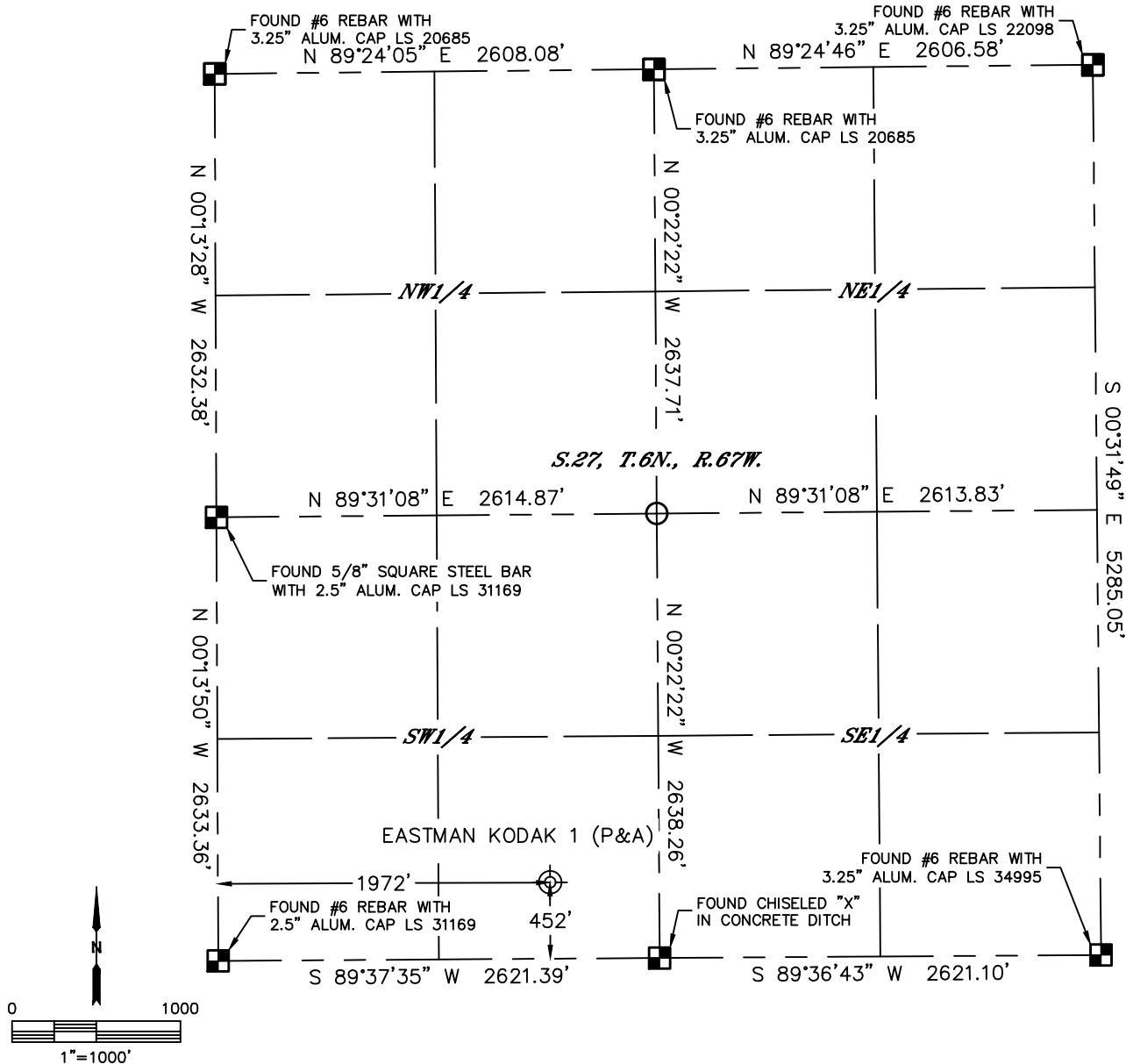


Lat40°, Inc. 6250 W. 10th Street, Unit 2, Greeley, CO 970-515-5294

PLUGGED AND ABANDONED WELL EXHIBIT

EASTMAN KODAK #1

SECTION: 27
TOWNSHIP: 6N
RANGE: 67W
6TH. P.M.
WELD COUNTY, CO



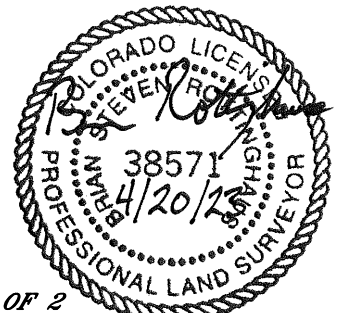
CLIENT: PDC ENERGY, INC.				LANDMAN: PAUL MONTVILLE			
INSTRUMENT OPERATOR: CASEY KOHOUT				SURVEY DATE: 4/13/2023		SURFACE USE: RANGELAND	
SHL FOOTAGE		SHL LAT °	SHL LONG °	SHL PDOP	SHL ELEV (FT.)	SHL 1/4/1/4	SHL S-T-R
452	FSL 1972 FWL	40.45195	-104.88208	1.1	4748	SESW	27-6-67
DESCRIPTION: FOUND 9" STEEL PIPE WITH FITTING APPROXIMATELY 2.2' ABOVE GRADE.							

NOTE:

- 1) Bearings shown are Grid Bearings of the Colorado State Plane Coordinate System, North Zone, North American Datum 1983. The lineal dimensions as contained herein are based upon the "U.S. Survey Foot."
- 2) Distances to section lines measured at 90 degrees from said section lines.
- 3) Ground elevations are based on an observed GPS elevation (NAVD 1988 DATUM).
- 4) Latitude and Longitude shown are (NAD 83 DATUM).
- 5) Sectional data as shown hereon is from previous surveys and was not verified for this P&A Exhibit.
- 6) This map does not represent a boundary survey.

LEGEND

- = ALIQUOT MONUMENT AS DESCRIBED
- = CALCULATED POSITION
- ⊗ = ABANDONED WELL



SHEET 1 OF 2

Brian S. Rottinghaus—On behalf of Lat40°, Inc.
Colorado Licensed Professional Land Surveyor No. 38571
DATE: 04/20/2023
PROJECT#: 2023131



Lat40°, Inc. 6250 W. 10th Street, Unit 2, Greeley, CO 970-515-5294

PLUGGED AND ABANDONED WELL EXHIBIT

EASTMAN KODAK #1

SECTION: 27
TOWNSHIP: 6N
RANGE: 67W
6TH. P.M.
WELD COUNTY, CO
DATE: 4/13/2023



VIEW NORTH



VIEW WEST



VIEW EAST



VIEW SOUTH