



FORM F-106

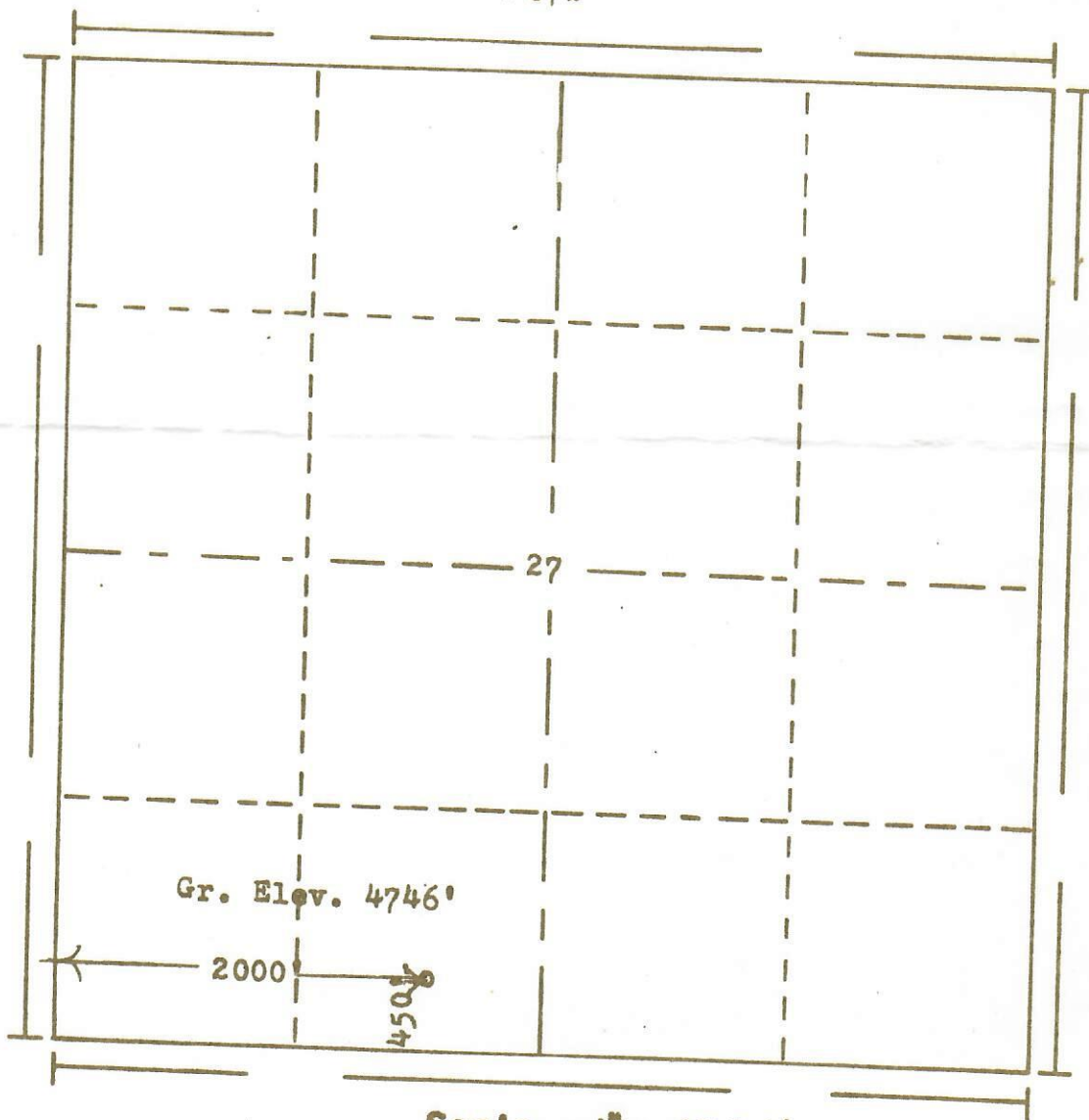


RECEIVED

JUN 20 1974 N

GOLD. OIL & GAS CONS. COMM.

R. 67W



Scale... 1" = 1000'

Powers Elevation Company, Inc. of Denver, Colorado
has in accordance with a request from Mr. Colton
for Colton & Colton et al
determined the location of No. 1 Kodak
to be 450' FS & 2000' FW
Range 67W of the 6th Principal Meridian
Weld County, Colorado

I hereby certify that this plat is an
accurate representation of a correct
survey showing the location of

Date: 6-6-74

74 614

B. J. Hollaway
Licensed Land Surveyor No. 2853
State of Colorado