

## Inspection Photos

Location Name: TEP ROCKY MOUNTAIN LLC RWF 314-16 Pad

Location ID: 324148



Photo # 6120 From entrance to location



Photo # 6121 Location



**COLORADO**  
Oil & Gas Conservation  
Commission  
Department of Natural Resources



**Inspection Photos**  
**Location Name: TEP ROCKY MOUNTAIN LLC RWF 314-16 Pad**  
**Location ID: 324148**



**Photo # 6122 Location**



**Photo # 6123 Location**





## Inspection Photos

Location Name: TEP ROCKY MOUNTAIN LLC RWF 314-16 Pad

Location ID: 324148



Photo # 6124 Stained soils & gravel



Photo # 6125 Stained soils & gravel



**COLORADO**  
Oil & Gas Conservation  
Commission  
Department of Natural Resources



## Inspection Photos

Location Name: TEP ROCKY MOUNTAIN LLC RWF 314-16 Pad

Location ID: 324148



**Photo # 6128 Meter calibration info not conspicuously posted**



**Photo # 6129 Meter calibration info not conspicuously posted**



## Inspection Photos

Location Name: TEP ROCKY MOUNTAIN LLC RWF 314-16 Pad

Location ID: 324148



Photo # 6130 Containment liner needs maintenance

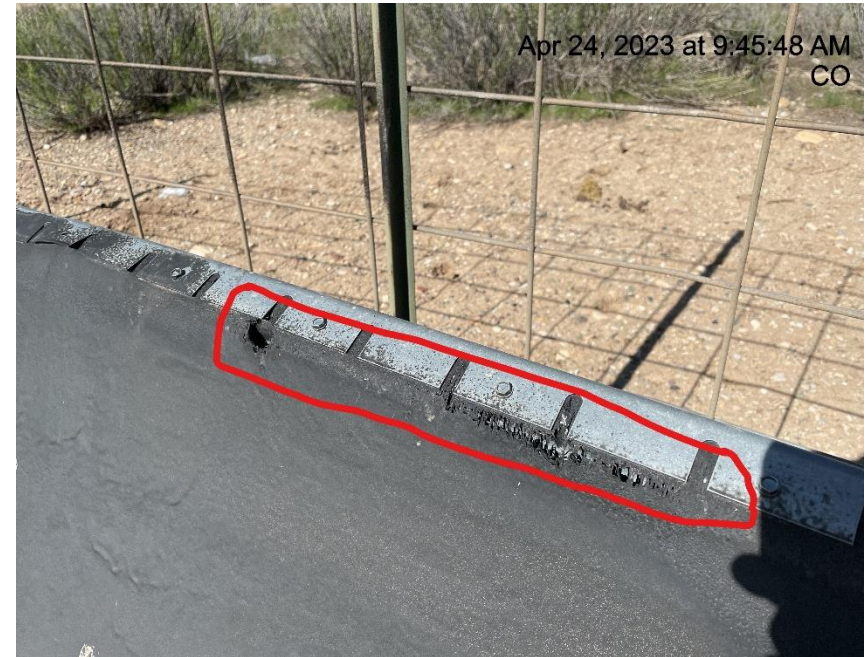


Photo # 6133 Containment liner needs maintenance



**COLORADO**  
Oil & Gas Conservation  
Commission  
Department of Natural Resources



## Inspection Photos

Location Name: TEP ROCKY MOUNTAIN LLC RWF 314-16 Pad

Location ID: 324148



Photo # 6135 Containment liner needs maintenance



Photo # 6136 Debris



## Inspection Photos

Location Name: TEP ROCKY MOUNTAIN LLC RWF 314-16 Pad

Location ID: 324148



Photo # 6137 Debris



Photo # 6138 Debris



**COLORADO**  
Oil & Gas Conservation  
Commission  
Department of Natural Resources



## Inspection Photos

Location Name: TEP ROCKY MOUNTAIN LLC RWF 314-16 Pad

Location ID: 324148



Photo # 6139 Debris



Photo # 6140 Debris



**COLORADO**  
Oil & Gas Conservation  
Commission  
Department of Natural Resources



## Inspection Photos

Location Name: TEP ROCKY MOUNTAIN LLC RWF 314-16 Pad

Location ID: 324148



**Photo # 6141 Debris**



**Photo # 6142 Sediment trap needs maintenance (West side of pad approximately 15-20 ft from tank battery)**



## Inspection Photos

Location Name: TEP ROCKY MOUNTAIN LLC RWF 314-16 Pad

Location ID: 324148



**Photo # 6144 Erosion & transport of sediment on spur road near entrance to location**



**Photo # 6145 Erosion & transport of sediment on spur road near entrance to location**



**COLORADO**  
Oil & Gas Conservation  
Commission  
Department of Natural Resources



## Inspection Photos

Location Name: TEP ROCKY MOUNTAIN LLC RWF 314-16 Pad

Location ID: 324148



**Photo # 6147 Erosion & transport of sediment on spur road near entrance to location**



**Photo 6149 Erosion & transport of sediment on spur road near entrance to location**



## Inspection Photos

Location Name: TEP ROCKY MOUNTAIN LLC RWF 314-16 Pad

Location ID: 324148



**Photo # 6151 Erosion & transport of sediment on spur road  
near entrance to location**