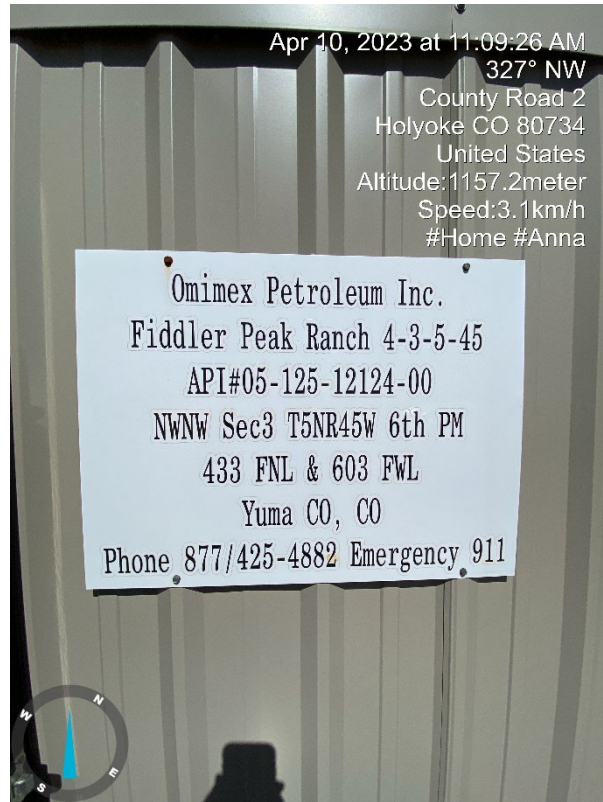


Inspection Photos

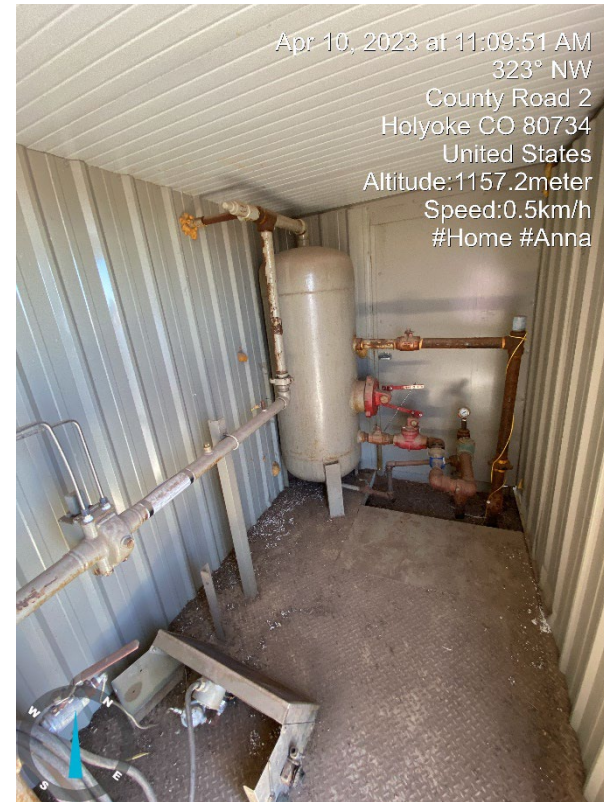
Operator: Omimex Petroleum Inc (66190)

Lease: Fiddler Peak Ranch 4-3-5-45

Facility ID/API, 439161 / 05-125-12124



1. Lease sign on meter shed



2. Inside Meter shed, Vertical gas separator,



Inspection Photos

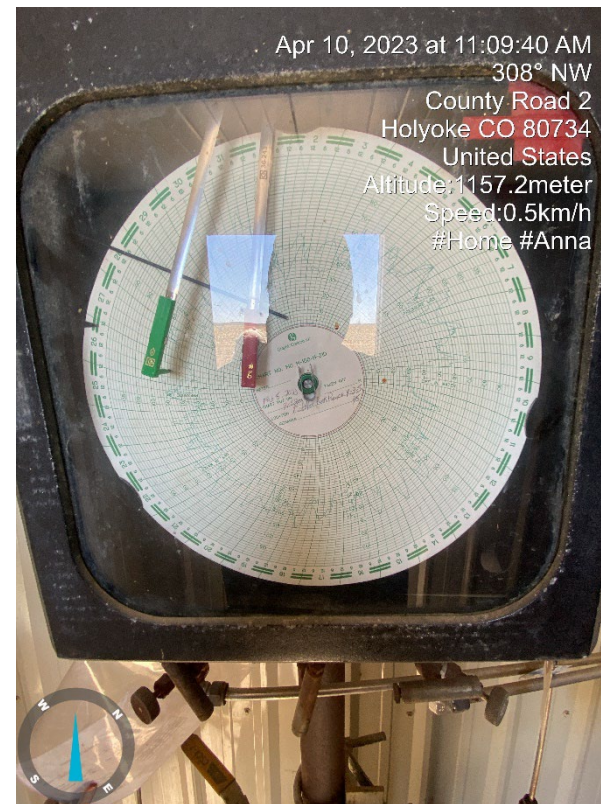
Operator: Omimex Petroleum Inc (66190)

Lease: Fiddler Peak Ranch 4-3-5-45

Facility ID/API, 439161 / 05-125-12124



3. Meter shed



4. Chart was last changed 2/8/2023.



COLORADO
Oil & Gas Conservation
Commission
Department of Natural Resources

Inspection Photos

Operator: Omimex Petroleum Inc (66190)

Lease: Fiddler Peak Ranch 4-3-5-45

Facility ID/API, 439161 / 05-125-12124



5. Wellhead



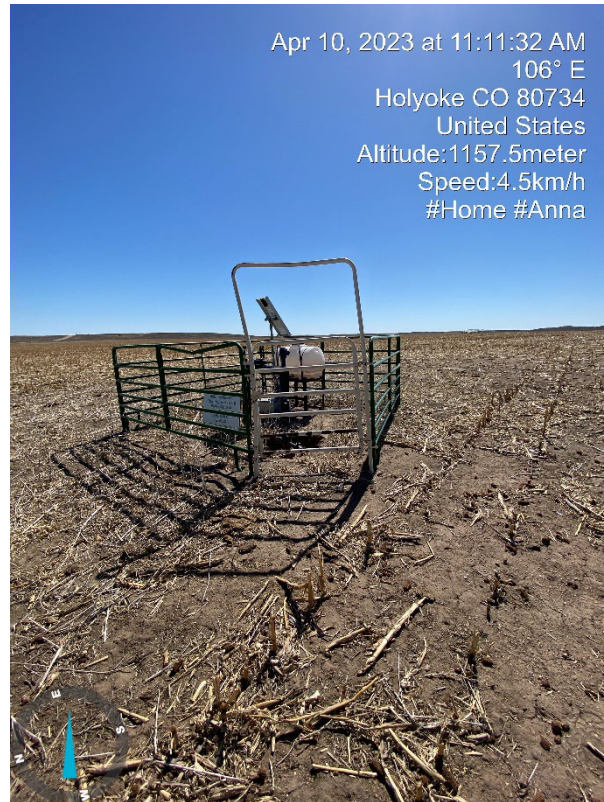
6. Chemical tank without containment.

Inspection Photos

Operator: Omimex Petroleum Inc (66190)

Lease: Fiddler Peak Ranch 4-3-5-45

Facility ID/API, 439161 / 05-125-12124



7. Wellhead located in farm ground



8. No tracks going into location



COLORADO
Oil & Gas Conservation
Commission
Department of Natural Resources