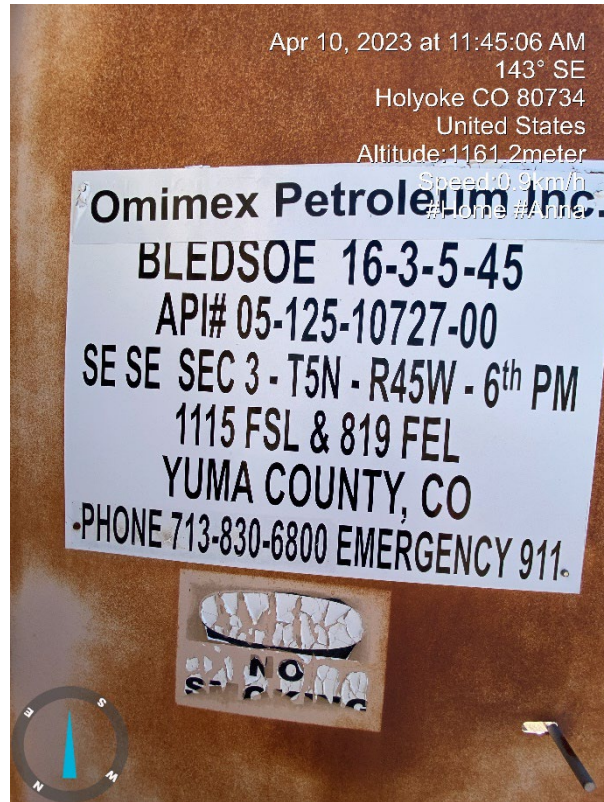


Inspection Photos

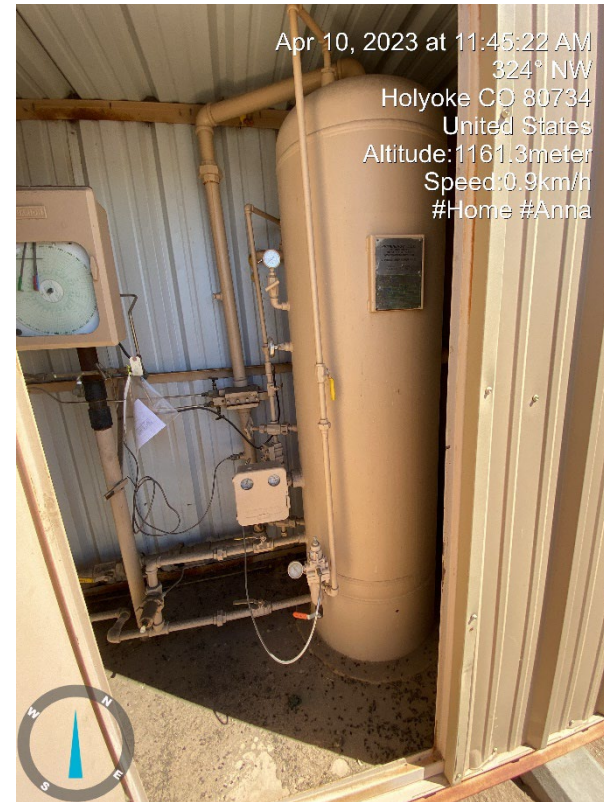
Operator: Omimex Petroleum Inc (66190)

Lease: Bledsoe 16-3-5-45

Facility ID/API, 289413 / 05-125-10727



1. Lease sign on meter shed



2. VGS in meter shed



Inspection Photos
Operator: Omimex Petroleum Inc (66190)
Lease: Bledsoe 16-3-5-45
Facility ID/API, 289413 / 05-125-10727



3. Meter run, Chart last changed on 11/30/2022

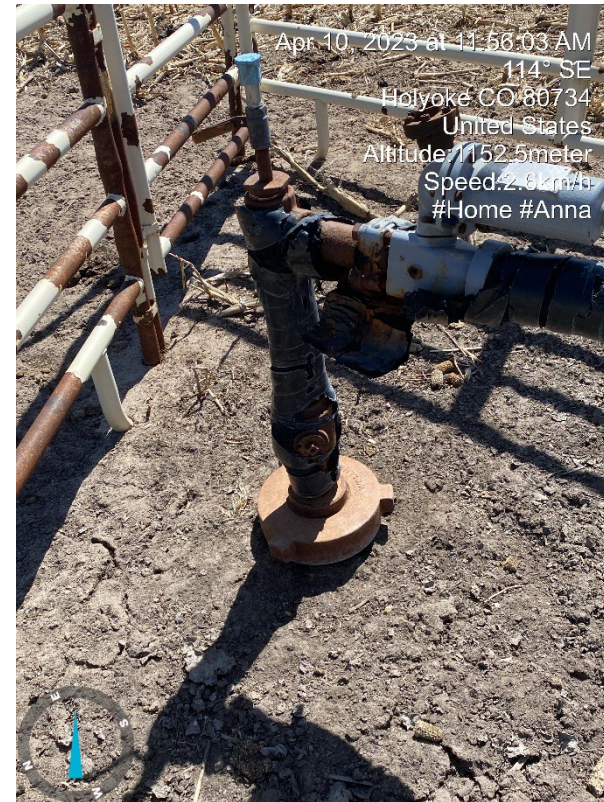


4. Gas meter shed 2356' North of wellhead

Inspection Photos
Operator: Omimex Petroleum Inc (66190)
Lease: Bledsoe 16-3-5-45
Facility ID/API, 289413 / 05-125-10727



5. Wellhead in crop circle



6. Wellhead