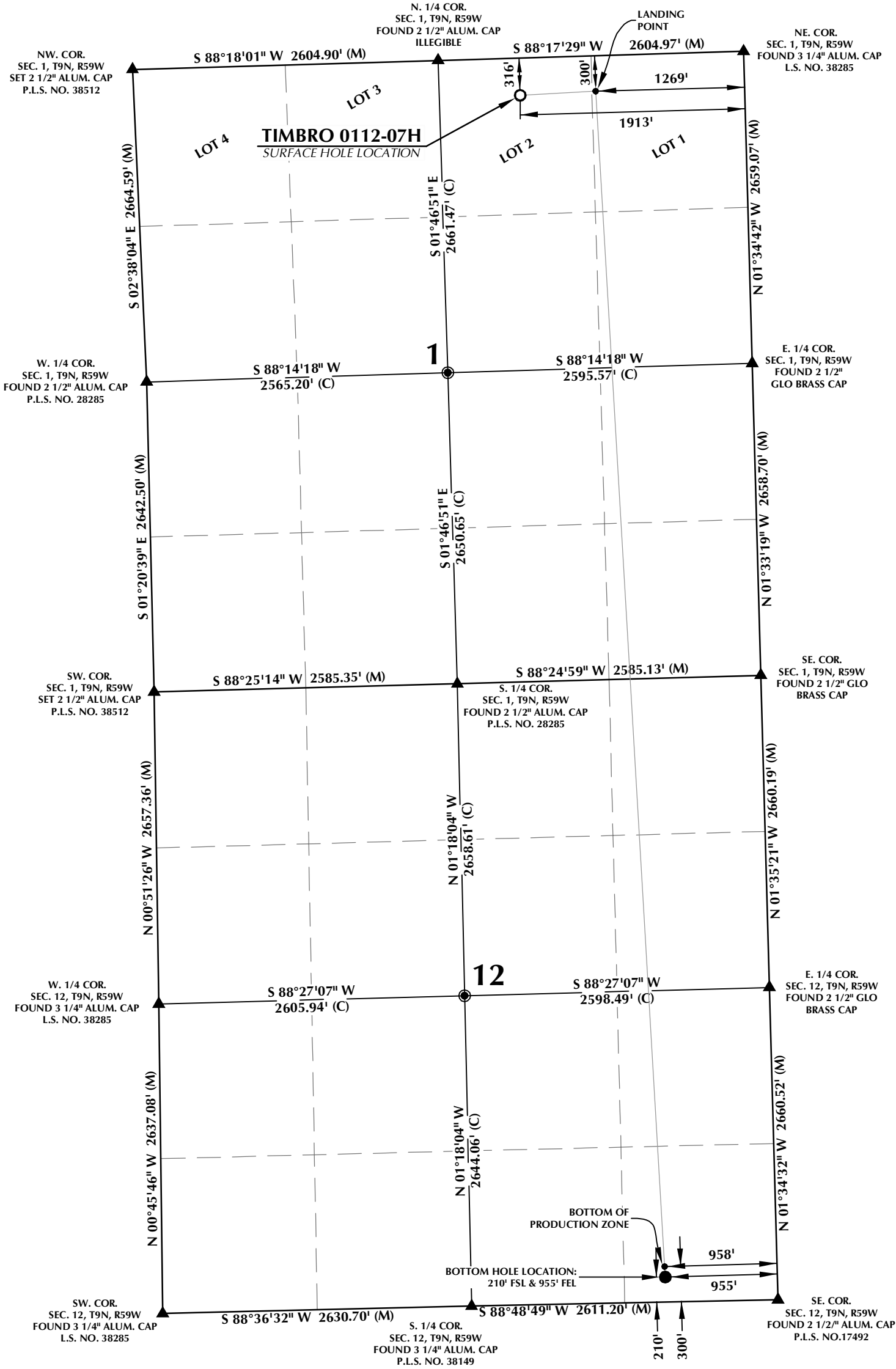


T9N, R59W



**SURFACE HOLE LOCATION: NAD 83**  
GROUND ELEVATION= 4939.6'  
LATITUDE= 40.786594°  
LONGITUDE= -103.924231°  
LATITUDE= 40°47'11.738"  
LONGITUDE= -103°55'27.231"

**LANDING POINT: NAD 83**  
LATITUDE= 40.786659°  
LONGITUDE= -103.921904°  
LATITUDE= 40°47'11.972"  
LONGITUDE= -103°55'18.855"

**BOTTOM OF PRODUCTION ZONE: NAD 83**  
LATITUDE= 40.759141°  
LONGITUDE= -103.920430°  
LATITUDE= 40°45'32.909"  
LONGITUDE= -103°55'13.547"

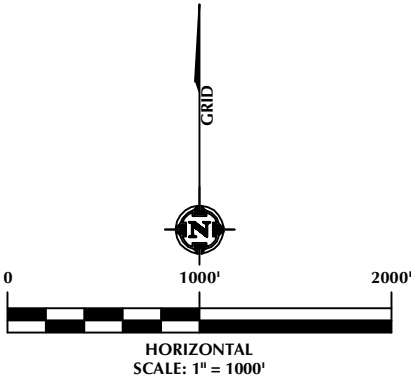
**BOTTOM HOLE LOCATION: NAD 83**  
LATITUDE= 40.758894°  
LONGITUDE= -103.920416°  
LATITUDE= 40°45'32.020"  
LONGITUDE= -103°55'13.499"

CERTIFICATE OF SURVEYOR:

THIS IS TO CERTIFY THAT THE ABOVE PLAT WAS PREPARED FROM FIELD NOTES OF ACTUAL SURVEYS MADE BY ME OR UNDER MY SUPERVISION AND THAT THE SAME ARE TRUE AND CORRECT TO THE BEST OF MY KNOWLEDGE AND BELIEF. THIS CERTIFICATE DOES NOT REPRESENT A LAND SURVEY PLAT OR IMPROVEMENT SURVEY PLAT AS DEFINED BY C.R.S. 38-51-102 AND CANNOT BE RELIED UPON TO DETERMINE OWNERSHIP.

**1/12/23**  
RANDALL K. FRENCH  
PROFESSIONAL LAND SURVEYOR  
COLORADO REGISTRATION NUMBER 38512

NOTICE:  
ACCORDING TO COLORADO STATE LAW YOU MUST COME TO COURT LEGAL ACTION BASED UPON ANY DEFECT IN THIS SURVEY WITHIN THREE YEARS AFTER YOU FIRST DISCOVER SUCH DEFECT. IN NO EVENT MAY ANY ACTION BASED UPON ANY DEFECT IN THIS SURVEY BE COMMENCED MORE THAN TEN YEARS FROM THE DATE ON THE CERTIFICATION SHOWN HEREON.



NOTES:

1. ▲ INDICATES SECTION CORNER.
2. ● INDICATES CALCULATED CORNER.
3. ELEVATION BASED ON NAVD88 (GEOID18).
4. BASIS OF BEARINGS DERIVED FROM COLORADO COORDINATE SYSTEM OF 1983, NORTH ZONE.
5. ALL MEASURED DISTANCES ARE GRID.  
COMBINED SCALE FACTOR: .99976730 CALCULATED FROM THE N. 1/4 CORNER OF SECTION 1, T9N, R59W.  
OPERATOR: JASON CURNUTT / PDOP = 2.8
6. WELL FOOTAGES ARE MEASURED AT RIGHT ANGLES TO THE SECTION LINES.
- 7.

WELL PAD - TIMBRO 0101

TIMBRO 0112-07H  
WELL LOCATION CERTIFICATE  
316' FNL & 1913' FEL LOT 2 (NWNE) (SURFACE HOLE LOCATION)  
300' FNL & 1269' FEL LOT 1 (NENE) (LANDING POINT)  
LOCATED IN SECTION 1  
300' FSL & 958' FEL (SESE) (BOTTOM OF PRODUCTION ZONE)  
210' FSL & 955' FEL (SESE) (BOTTOM HOLE LOCATION)  
LOCATED IN SECTION 12  
T9N, R59W, 6TH P.M.  
WELD COUNTY, COLORADO

**VERDAD**  
RESOURCES  
1125 17th Street, Suite 550  
Denver, Colorado 80202



CONSULTING, LLC

SHERIDAN OFFICE 1095 Saberton Avenue Sheridan, Wyoming 82801 Phone 307-674-0609  
LOVELAND OFFICE 6706 North Franklin Avenue Loveland, Colorado 80538 Phone 970-776-4331

DRAFTED BY:	SJM	CHECKED BY:	RKF
DATE DRAFTED:	1/12/23	DATE SURVEYED:	12/12/22
REVISED:		FILE NAME:	22-198