

**KT Resources LLC**  
**Fee M-31-2-96-N, Ant Hill Unit 6-11D**  
**Location #336391**



**Access off highway 64**



**Access road from highway 64 to location**



**KT Resources LLC**  
**Fee M-31-2-96-N, Ant Hill Unit 6-11D**  
**Location #336391**



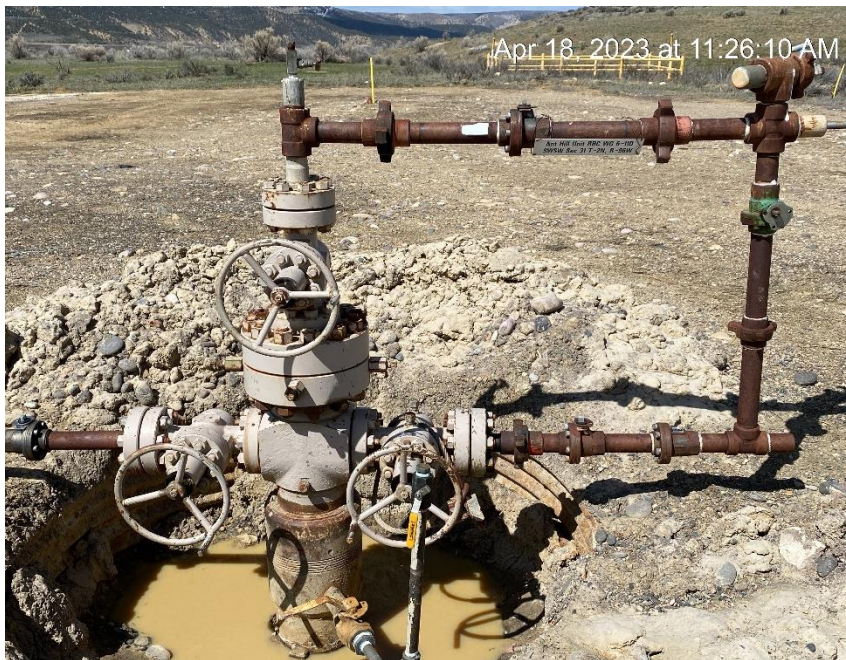
**Access road entrance to location**



**Entrance to location**



**KT Resources LLC**  
**Fee M-31-2-96-N, Ant Hill Unit 6-11D**  
**Location #336391**



**Open cellar**



**API Number missing from tank battery sign**

**KT Resources LLC  
Fee M-31-2-96-N, Ant Hill Unit 6-11D  
Location #336391**



**No gas meter calibration card visibly displayed**



**Calibration card visibly displayed**



## Location #336391

[illegible]

### Erosion and sinkholes at edge of location



**KT Resources LLC**  
**Fee M-31-2-96-N, Ant Hill Unit 6-11D**  
**Location #336391**



**Edge of location sinkhole**



**Sinkhole at edge of location**



**KT Resources LLC  
Fee M-31-2-96-N, Ant Hill Unit 6-11D  
Location #336391**



**Erosion ditch off location**



**Sediment migration from location and hillside**



**KT Resources LLC**  
**Fee M-31-2-96-N, Ant Hill Unit 6-11D**  
**Location #336391**



**Sediment migration ditch from location to highway 64**



**Sediment migration from location to highway 64**



**KT Resources LLC**  
**Fee M-31-2-96-N, Ant Hill Unit 6-11D**  
**Location #336391**



**Northeast corner view**



**Northwest corner view**



**KT Resources LLC**  
**Fee M-31-2-96-N, Ant Hill Unit 6-11D**  
**Location #336391**



**Southwest corner view**



**Southeast corner view**