

**KT Resources LLC
Ant Hill Unit RBC WG 31-42
Location #316335**

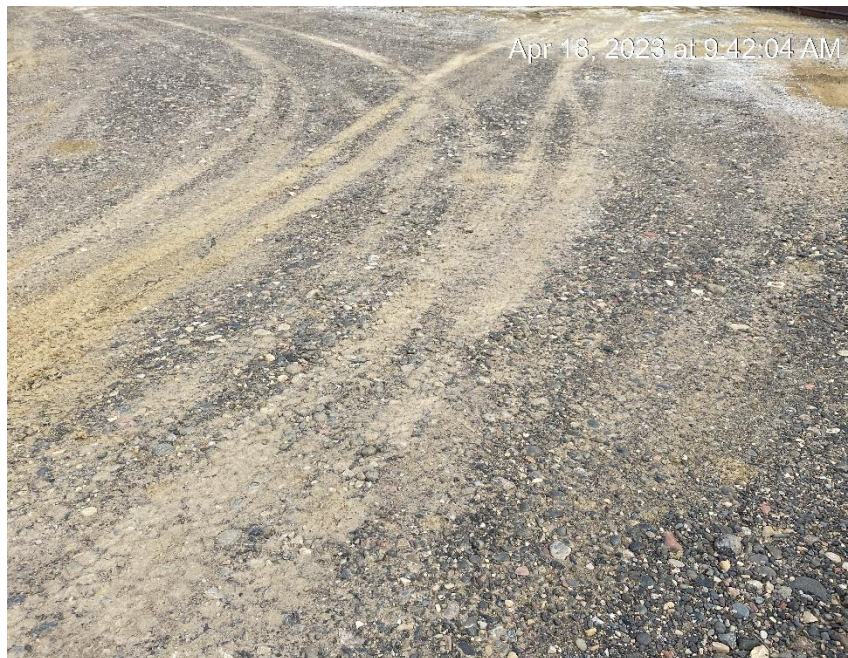


Access entrance from highway 64



Access road at location entrance

**KT Resources LLC
Ant Hill Unit RBC WG 31-42
Location #316335**



Location entrance at access road

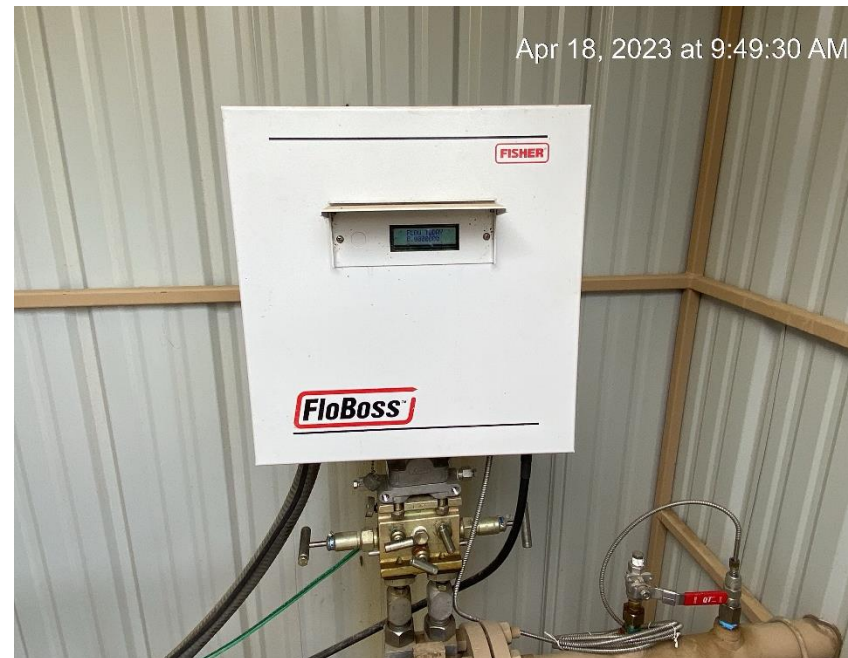


View from location entrance

KT Resources LLC
Ant Hill Unit RBC WG 31-42
Location #316335



Tank sign missing well API Number



No gas meter calibration card visible

**KT Resources LLC
Ant Hill Unit RBC WG 31-42
Location #316335**

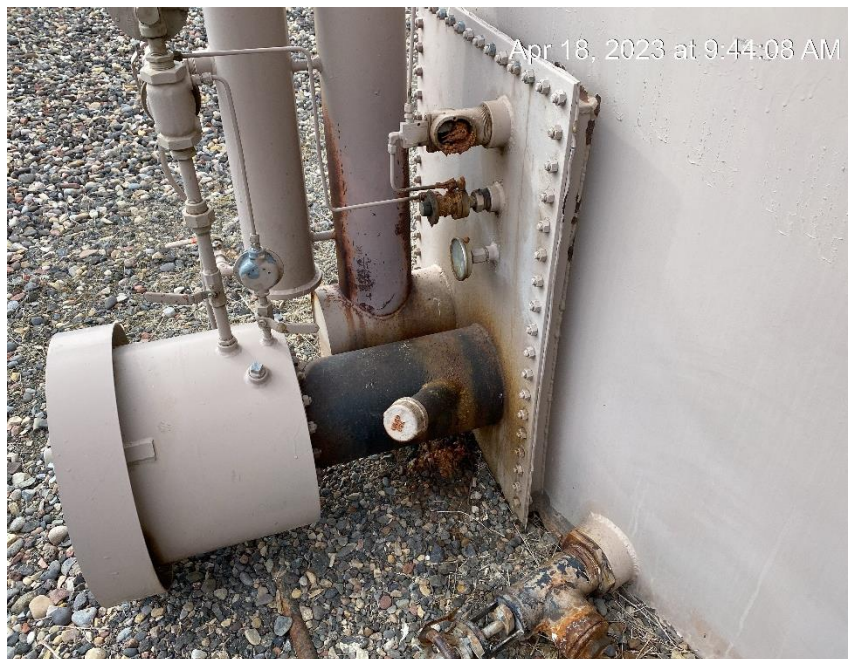


Labels fading and becoming illegible



Unused equipment

**KT Resources LLC
Ant Hill Unit RBC WG 31-42
Location #316335**



Leaking equipment and soil staining



Crude oil loadline soil staining

**KT Resources LLC
Ant Hill Unit RBC WG 31-42
Location #316335**



Sediment migration entering location



Lack of stabilization and vehicle tracking

**KT Resources LLC
Ant Hill Unit RBC WG 31-42
Location #316335**



Sediment migration exiting location and vehicle tracking



Sediment migration and vehicle tracking leaving location

**KT Resources LLC
Ant Hill Unit RBC WG 31-42
Location #316335**



View from Northeast corner



View from Northwest corner

**KT Resources LLC
Ant Hill Unit RBC WG 31-42
Location #316335**



View from Southwest corner



View from Southeast corner