

Inspection Photos

4/17/2023

Operator: GORDON ENGINEERING INC -
34720

Location #312560
Mesa County, CO

Aaron Trujillo
NW Reclamation Specialist
COGCC

Inspection Photos

Operator Name: GORDON ENGINEERING INC - 34720

Location #312560



Photo 1: Photos taken from the west end of the Location, facing northeast and southeast. Photos shows Location has been recontoured, soils replaced, and decompacted.

Inspection Photos

Operator Name: GORDON ENGINEERING INC - 34720

Location #312560



April 17, 2023



April 17, 2023

Photo 2: Photos taken from the north end of the Location. Photos 2-3 provide an overview of the Location from east, southeast, southwest to west. Photos show Location has been recontoured, soils replaced, and decompacted. Photos also show stormwater and erosion control BMPs, and BMPs to stabilize the soils remain missing or insufficient; soils left exposed and at risk to wind and water erosion; surface roughening alone inadequate.

Inspection Photos

Operator Name: GORDON ENGINEERING INC - 34720

Location #312560



Photo 3: See comments under photo 2.

Inspection Photos

Operator Name: GORDON ENGINEERING INC - 34720

Location #312560



Photo 4: Photo shows an example of the soils surface, taken from the reclamation areas of the Location. Reclamation Specialist was unable to observe seed within the soil surface and subsurface; seeding activities not apparent, and do not appear to have been conducted.

Inspection Photos

Operator Name: GORDON ENGINEERING INC - 34720

Location #312560



Photo 5: Photo left taken from the spill area north of the Location. Photo right taken from areas immediately adjacent to the spill that were not impacted. Photo shows spill areas remain bare- unable to find evidence that spill area has been remediated and reclaimed.

Inspection Photos

Operator Name: GORDON ENGINEERING INC - 34720

Location #312560



Photo 6: Photos taken from the spill area north of the Location. Photos show waste material remains at spill; spill area has not been remediated or reclaimed.

Inspection Photos

Operator Name: GORDON ENGINEERING INC - 34720

Location #312560



Photo 7: Photos taken from the Location. Photos examples showing stormwater and erosion control BMPs remain missing or insufficient; soils have been left exposed, unstabilized and at risk to wind/water erosion. BMPs to manage runoff and minimize off-site sediment transport along the perimeter also missing or insufficient; surface roughening alone inadequate.

Inspection Photos

Operator Name: GORDON ENGINEERING INC - 34720

Location #312560



Photo 8: Photo taken from the access road. Photo shows Operator has re “pot-holed” the access road, resulting in large holes and soil piles; soils have been left unstabilized; access road has not been properly contoured and stabilized; seeding activities at access road not apparent.



COLORADO
Oil & Gas Conservation
Commission
Department of Natural Resources

Inspection Photos

Operator Name: GORDON ENGINEERING INC - 34720

Location #312560



Photo 9: Erosion degradation, sediment deposition observed along access road; stormwater and erosion control BMPs missing or insufficient.

Inspection Photos

Operator Name: GORDON ENGINEERING INC - 34720

Location #312560

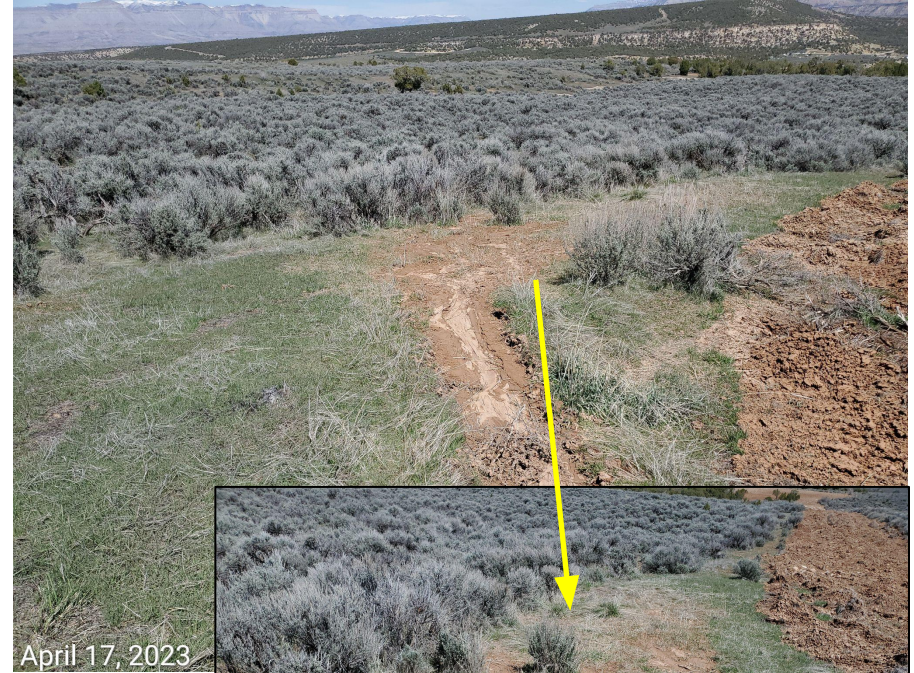


Photo 10: Stormwater and erosion control BMPs at the access road remain missing or insufficient. Photos right show sediment transport/deposition on undisturbed adjacent areas.