

Project: Garfield County, CO
Site: BJU M23A 496 Pad
Well: BJU M23A FED 15A-23 496
Wellbore: Wellbore #1
Design: Design #3
Latitude: 39.684026
Longitude: -108.140231
Ground Level: 8104.0
RKB @ 8134.0usft (30')

PROJECT DETAILS: Garfield County, US

Geodetic System: Universal Transverse Mercator (US Survey Feet)
Datum: NAD 1927 - Western US
Ellipsoid: Clarke 1866
Zone: Zone 12N (114 W to 108 W)
System Datum: Mean Sea Level

REFERENCE INFORMATION

Vertical (TVD) Reference: RKB @ 8134.0usft (30')
Section (VS) Reference: Slot - 15A-23(0.0N, 0.0E)
Measured Depth Reference: RKB @ 8134.0usft (30')
Calculation Method: Minimum Curvature

FORMATION TOP DETAILS

TVDPath	MDPath	Formation
3343.0	3364.3	Wasatch
5743.0	5765.4	Wasatch G
6043.0	6065.4	Fort Union
8057.0	8079.4	Ohio Creek
8414.0	8436.4	Williams Fork
11279.0	11302.3	Cameo
11779.0	11802.4	Rollins

SECTION DETAILS

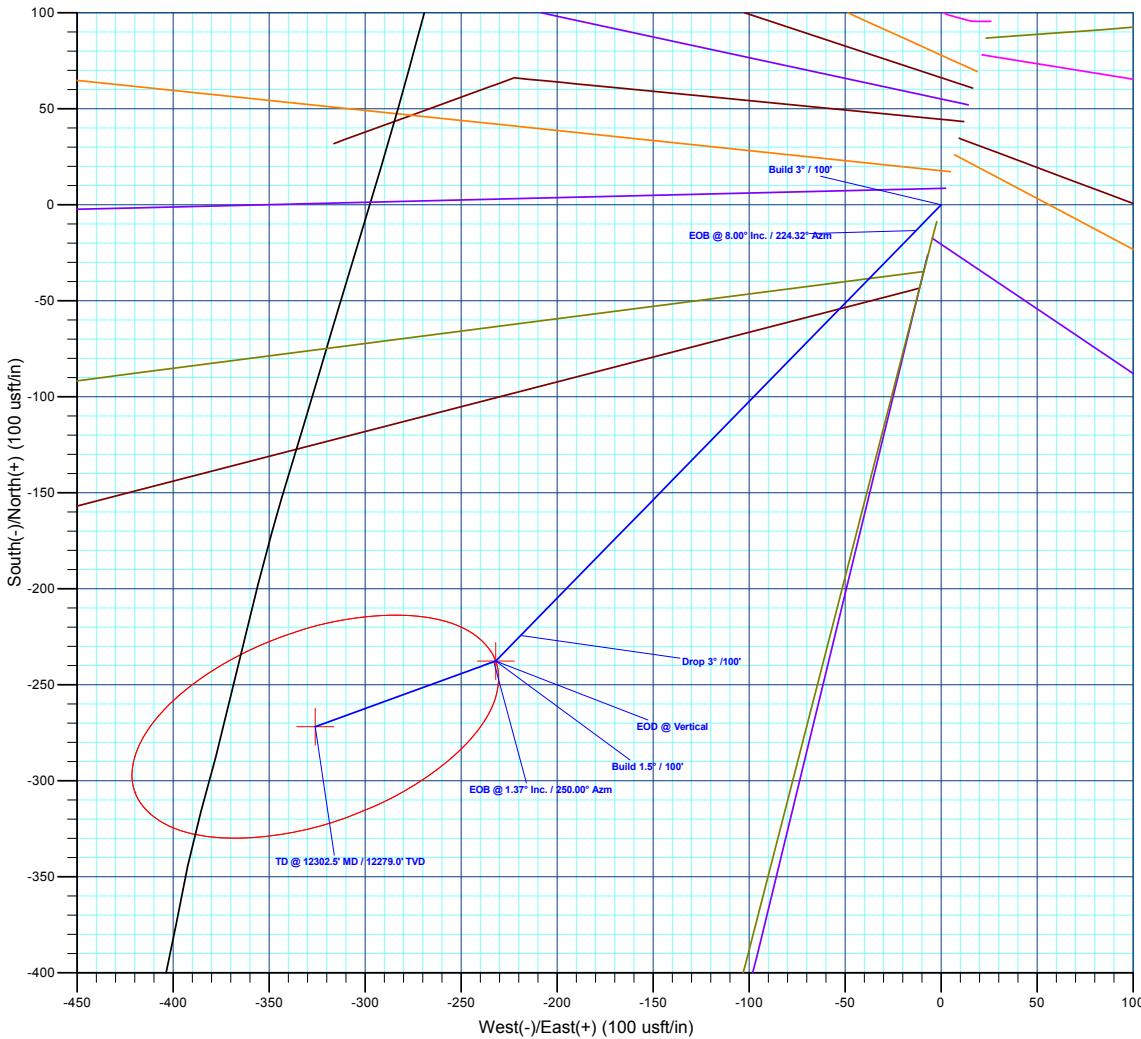
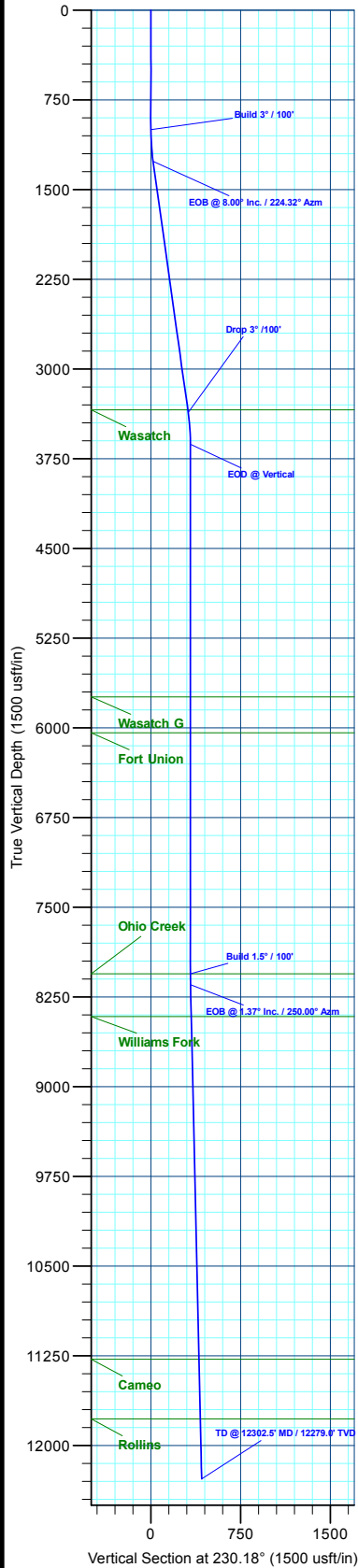
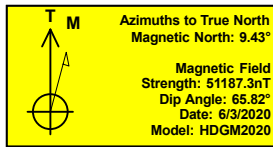
MD	Inc	Azi	TVD	+N/-S	+E/-W	Dleg	TFace	VSec	Annotation
0.0	0.00	0.00	0.0	0.0	0.0	0.00	0.00	0.0	
1000.0	0.00	0.00	1000.0	0.0	0.0	0.00	0.00	0.0	Build 3° / 100'
1266.7	8.00	224.32	1265.9	-13.3	-13.0	3.00	224.32	18.5	EOB @ 8.00° Inc. / 224.32° Azm
3384.6	8.00	224.32	3363.1	-224.2	-219.0	0.00	0.00	311.8	Drop 3° / 100'
3651.4	0.00	0.00	3629.0	-237.5	-232.0	3.00	180.00	330.3	EOD @ Vertical
8079.4	0.00	0.00	8057.0	-237.5	-232.0	0.00	0.00	330.3	Build 1.5° / 100'
8170.8	1.37	250.00	8148.4	-237.9	-233.0	1.50	250.00	331.3	EOB @ 1.37° Inc. / 250.00° Azm
12302.5	1.37	250.00	12279.0	-271.7	-325.9	0.00	0.00	424.4	TD @ 12302.5' MD / 12279.0' TVD

DESIGN TARGET DETAILS

Name	TVD	+N/-S	+E/-W	North	East	Lat	Long
OHCR - 15A-23	8057.0	-237.5	-232.0	14423574.48	2444835.83	39.683374	-108.141055
PBHL - 15A-23	12279.0	-271.7	-325.9	14423537.30	2444743.00	39.683280	-108.141389

WELL DETAILS: BJU M23A FED 15A-23 496

+N/-S	+E/-W	Ground Level : 8104.0	North	East	Lat	Long
0.0	0.0		14423819.30	2445060.10	39.684026	-108.140231



Plan: Design #3 (BJU M23A FED 15A-23 496/Wellbore #1)

Created By: Will Jircik Date: 23:54, January 04 2023



Caerus Oil & Gas

Garfield County, CO

BJU M23A 496 Pad

BJU M23A FED 15A-23 496 - Slot 15A-23

Wellbore #1

Plan: Design #3

KLX Well Planning Report

04 January, 2023



Database:	EDM 5000.1 Single User Db	Local Co-ordinate Reference:	Well BJU M23A FED 15A-23 496 - Slot 15A-23
Company:	Caerus Oil & Gas	TVD Reference:	RKB @ 8134.0usft (30')
Project:	Garfield County, CO	MD Reference:	RKB @ 8134.0usft (30')
Site:	BJU M23A 496 Pad	North Reference:	True
Well:	BJU M23A FED 15A-23 496	Survey Calculation Method:	Minimum Curvature
Wellbore:	Wellbore #1		
Design:	Design #3		

Project	Garfield County, CO		
Map System:	Universal Transverse Mercator (US Survey Fee	System Datum:	Mean Sea Level
Geo Datum:	NAD 1927 - Western US		
Map Zone:	Zone 12N (114 W to 108 W)		

Site	BJU M23A 496 Pad		
Site Position:		Northing:	14,424,028.50 usft
From:	Map	Easting:	2,445,109.60 usft
Position Uncertainty:	0.0 usft	Slot Radius:	13-3/16 "
		Latitude:	39.684596
		Longitude:	-108.140032
		Grid Convergence:	1.83 °

Well	BJU M23A FED 15A-23 496 - Slot 15A-23		
Well Position	+N/-S	-207.5 usft	Northing: 14,423,819.30 usft
	+E/-W	-56.1 usft	Easting: 2,445,060.10 usft
Position Uncertainty	0.0 usft	Wellhead Elevation:	Latitude: 39.684026
			Longitude: -108.140232
			Ground Level: 8,104.0 usft

Wellbore	Wellbore #1				
Magnetics	Model Name	Sample Date	Declination (°)	Dip Angle (°)	Field Strength (nT)
	HDGM2020	6/3/2020	9.43	65.82	51,187.30000000

Design	Design #3				
Audit Notes:					
Version:	Phase:	PLAN	Tie On Depth:	0.0	
Vertical Section:	Depth From (TVD) (usft)	+N/-S (usft)	+E/-W (usft)	Direction (°)	
	0.0	0.0	0.0	230.18	

Plan Sections										
Measured Depth (usft)	Inclination (°)	Azimuth (°)	Vertical Depth (usft)	+N/-S (usft)	+E/-W (usft)	Dogleg Rate (°/100usft)	Build Rate (°/100usft)	Turn Rate (°/100usft)	TFO (°)	Target
0.0	0.00	0.00	0.0	0.0	0.0	0.00	0.00	0.00	0.00	
1,000.0	0.00	0.00	1,000.0	0.0	0.0	0.00	0.00	0.00	0.00	
1,266.7	8.00	224.32	1,265.9	-13.3	-13.0	3.00	3.00	0.00	224.32	
3,384.6	8.00	224.32	3,363.1	-224.2	-219.0	0.00	0.00	0.00	0.00	
3,651.4	0.00	0.00	3,629.0	-237.5	-232.0	3.00	-3.00	0.00	180.00	
8,079.4	0.00	0.00	8,057.0	-237.5	-232.0	0.00	0.00	0.00	0.00	OHCR - 15A-23
8,170.8	1.37	250.00	8,148.4	-237.9	-233.0	1.50	1.50	-120.29	250.00	
12,302.5	1.37	250.00	12,279.0	-271.7	-325.9	0.00	0.00	0.00	0.00	PBHL - 15A-23

Database:	EDM 5000.1 Single User Db	Local Co-ordinate Reference:	Well BJU M23A FED 15A-23 496 - Slot 15A-23
Company:	Caerus Oil & Gas	TVD Reference:	RKB @ 8134.0usft (30')
Project:	Garfield County, CO	MD Reference:	RKB @ 8134.0usft (30')
Site:	BJU M23A 496 Pad	North Reference:	True
Well:	BJU M23A FED 15A-23 496	Survey Calculation Method:	Minimum Curvature
Wellbore:	Wellbore #1		
Design:	Design #3		

Planned Survey

Measured Depth (usft)	Inclination (°)	Azimuth (°)	Vertical Depth (usft)	+N/-S (usft)	+E/-W (usft)	Vertical Section (usft)	Dogleg Rate (°/100usft)	Build Rate (°/100usft)	Turn Rate (°/100usft)
0.0	0.00	0.00	0.0	0.0	0.0	0.0	0.00	0.00	0.00
100.0	0.00	0.00	100.0	0.0	0.0	0.0	0.00	0.00	0.00
200.0	0.00	0.00	200.0	0.0	0.0	0.0	0.00	0.00	0.00
300.0	0.00	0.00	300.0	0.0	0.0	0.0	0.00	0.00	0.00
400.0	0.00	0.00	400.0	0.0	0.0	0.0	0.00	0.00	0.00
500.0	0.00	0.00	500.0	0.0	0.0	0.0	0.00	0.00	0.00
600.0	0.00	0.00	600.0	0.0	0.0	0.0	0.00	0.00	0.00
700.0	0.00	0.00	700.0	0.0	0.0	0.0	0.00	0.00	0.00
800.0	0.00	0.00	800.0	0.0	0.0	0.0	0.00	0.00	0.00
900.0	0.00	0.00	900.0	0.0	0.0	0.0	0.00	0.00	0.00
Build 3° / 100'									
1,000.0	0.00	0.00	1,000.0	0.0	0.0	0.0	0.00	0.00	0.00
1,100.0	3.00	224.32	1,100.0	-1.9	-1.8	2.6	3.00	3.00	0.00
1,200.0	6.00	224.32	1,199.6	-7.5	-7.3	10.4	3.00	3.00	0.00
EOB @ 8.00° Inc. / 224.32° Azm									
1,266.7	8.00	224.32	1,265.9	-13.3	-13.0	18.5	3.00	3.00	0.00
1,300.0	8.00	224.32	1,298.8	-16.6	-16.2	23.1	0.00	0.00	0.00
1,400.0	8.00	224.32	1,397.8	-26.6	-26.0	37.0	0.00	0.00	0.00
1,500.0	8.00	224.32	1,496.9	-36.5	-35.7	50.8	0.00	0.00	0.00
1,600.0	8.00	224.32	1,595.9	-46.5	-45.4	64.6	0.00	0.00	0.00
1,700.0	8.00	224.32	1,694.9	-56.5	-55.1	78.5	0.00	0.00	0.00
1,800.0	8.00	224.32	1,793.9	-66.4	-64.9	92.3	0.00	0.00	0.00
1,900.0	8.00	224.32	1,893.0	-76.4	-74.6	106.2	0.00	0.00	0.00
2,000.0	8.00	224.32	1,992.0	-86.3	-84.3	120.0	0.00	0.00	0.00
2,100.0	8.00	224.32	2,091.0	-96.3	-94.0	133.9	0.00	0.00	0.00
2,200.0	8.00	224.32	2,190.0	-106.3	-103.8	147.7	0.00	0.00	0.00
2,300.0	8.00	224.32	2,289.1	-116.2	-113.5	161.6	0.00	0.00	0.00
2,400.0	8.00	224.32	2,388.1	-126.2	-123.2	175.4	0.00	0.00	0.00
2,500.0	8.00	224.32	2,487.1	-136.1	-132.9	189.3	0.00	0.00	0.00
2,600.0	8.00	224.32	2,586.2	-146.1	-142.7	203.1	0.00	0.00	0.00
2,700.0	8.00	224.32	2,685.2	-156.1	-152.4	217.0	0.00	0.00	0.00
2,800.0	8.00	224.32	2,784.2	-166.0	-162.1	230.8	0.00	0.00	0.00
2,900.0	8.00	224.32	2,883.2	-176.0	-171.8	244.7	0.00	0.00	0.00
3,000.0	8.00	224.32	2,982.3	-185.9	-181.6	258.5	0.00	0.00	0.00
3,100.0	8.00	224.32	3,081.3	-195.9	-191.3	272.4	0.00	0.00	0.00
3,200.0	8.00	224.32	3,180.3	-205.9	-201.0	286.2	0.00	0.00	0.00
3,300.0	8.00	224.32	3,279.3	-215.8	-210.7	300.1	0.00	0.00	0.00
Wasatch									
3,364.3	8.00	224.32	3,343.0	-222.2	-217.0	309.0	0.00	0.00	0.00
Drop 3° /100'									
3,384.6	8.00	224.32	3,363.1	-224.2	-219.0	311.8	0.00	0.00	0.00
3,400.0	7.54	224.32	3,378.4	-225.7	-220.4	313.8	3.00	-3.00	0.00
3,500.0	4.54	224.32	3,477.8	-233.3	-227.8	324.3	3.00	-3.00	0.00
3,600.0	1.54	224.32	3,577.7	-237.1	-231.5	329.6	3.00	-3.00	0.00
EOD @ Vertical									
3,651.4	0.00	0.00	3,629.0	-237.5	-232.0	330.3	3.00	-3.00	0.00
3,700.0	0.00	0.00	3,677.6	-237.5	-232.0	330.3	0.00	0.00	0.00
3,800.0	0.00	0.00	3,777.6	-237.5	-232.0	330.3	0.00	0.00	0.00
3,900.0	0.00	0.00	3,877.6	-237.5	-232.0	330.3	0.00	0.00	0.00
4,000.0	0.00	0.00	3,977.6	-237.5	-232.0	330.3	0.00	0.00	0.00
4,100.0	0.00	0.00	4,077.6	-237.5	-232.0	330.3	0.00	0.00	0.00
4,200.0	0.00	0.00	4,177.6	-237.5	-232.0	330.3	0.00	0.00	0.00

Database:	EDM 5000.1 Single User Db	Local Co-ordinate Reference:	Well BJU M23A FED 15A-23 496 - Slot 15A-23
Company:	Caerus Oil & Gas	TVD Reference:	RKB @ 8134.0usft (30')
Project:	Garfield County, CO	MD Reference:	RKB @ 8134.0usft (30')
Site:	BJU M23A 496 Pad	North Reference:	True
Well:	BJU M23A FED 15A-23 496	Survey Calculation Method:	Minimum Curvature
Wellbore:	Wellbore #1		
Design:	Design #3		

Planned Survey									
Measured Depth (usft)	Inclination (°)	Azimuth (°)	Vertical Depth (usft)	+N/-S (usft)	+E/-W (usft)	Vertical Section (usft)	Dogleg Rate (°/100usft)	Build Rate (°/100usft)	Turn Rate (°/100usft)
4,300.0	0.00	0.00	4,277.6	-237.5	-232.0	330.3	0.00	0.00	0.00
4,400.0	0.00	0.00	4,377.6	-237.5	-232.0	330.3	0.00	0.00	0.00
4,500.0	0.00	0.00	4,477.6	-237.5	-232.0	330.3	0.00	0.00	0.00
4,600.0	0.00	0.00	4,577.6	-237.5	-232.0	330.3	0.00	0.00	0.00
4,700.0	0.00	0.00	4,677.6	-237.5	-232.0	330.3	0.00	0.00	0.00
4,800.0	0.00	0.00	4,777.6	-237.5	-232.0	330.3	0.00	0.00	0.00
4,900.0	0.00	0.00	4,877.6	-237.5	-232.0	330.3	0.00	0.00	0.00
5,000.0	0.00	0.00	4,977.6	-237.5	-232.0	330.3	0.00	0.00	0.00
5,100.0	0.00	0.00	5,077.6	-237.5	-232.0	330.3	0.00	0.00	0.00
5,200.0	0.00	0.00	5,177.6	-237.5	-232.0	330.3	0.00	0.00	0.00
5,300.0	0.00	0.00	5,277.6	-237.5	-232.0	330.3	0.00	0.00	0.00
5,400.0	0.00	0.00	5,377.6	-237.5	-232.0	330.3	0.00	0.00	0.00
5,500.0	0.00	0.00	5,477.6	-237.5	-232.0	330.3	0.00	0.00	0.00
5,600.0	0.00	0.00	5,577.6	-237.5	-232.0	330.3	0.00	0.00	0.00
5,700.0	0.00	0.00	5,677.6	-237.5	-232.0	330.3	0.00	0.00	0.00
Wasatch G									
5,765.4	0.00	0.00	5,743.0	-237.5	-232.0	330.3	0.00	0.00	0.00
5,800.0	0.00	0.00	5,777.6	-237.5	-232.0	330.3	0.00	0.00	0.00
5,900.0	0.00	0.00	5,877.6	-237.5	-232.0	330.3	0.00	0.00	0.00
6,000.0	0.00	0.00	5,977.6	-237.5	-232.0	330.3	0.00	0.00	0.00
Fort Union									
6,065.4	0.00	0.00	6,043.0	-237.5	-232.0	330.3	0.00	0.00	0.00
6,100.0	0.00	0.00	6,077.6	-237.5	-232.0	330.3	0.00	0.00	0.00
6,200.0	0.00	0.00	6,177.6	-237.5	-232.0	330.3	0.00	0.00	0.00
6,300.0	0.00	0.00	6,277.6	-237.5	-232.0	330.3	0.00	0.00	0.00
6,400.0	0.00	0.00	6,377.6	-237.5	-232.0	330.3	0.00	0.00	0.00
6,500.0	0.00	0.00	6,477.6	-237.5	-232.0	330.3	0.00	0.00	0.00
6,600.0	0.00	0.00	6,577.6	-237.5	-232.0	330.3	0.00	0.00	0.00
6,700.0	0.00	0.00	6,677.6	-237.5	-232.0	330.3	0.00	0.00	0.00
6,800.0	0.00	0.00	6,777.6	-237.5	-232.0	330.3	0.00	0.00	0.00
6,900.0	0.00	0.00	6,877.6	-237.5	-232.0	330.3	0.00	0.00	0.00
7,000.0	0.00	0.00	6,977.6	-237.5	-232.0	330.3	0.00	0.00	0.00
7,100.0	0.00	0.00	7,077.6	-237.5	-232.0	330.3	0.00	0.00	0.00
7,200.0	0.00	0.00	7,177.6	-237.5	-232.0	330.3	0.00	0.00	0.00
7,300.0	0.00	0.00	7,277.6	-237.5	-232.0	330.3	0.00	0.00	0.00
7,400.0	0.00	0.00	7,377.6	-237.5	-232.0	330.3	0.00	0.00	0.00
7,500.0	0.00	0.00	7,477.6	-237.5	-232.0	330.3	0.00	0.00	0.00
7,600.0	0.00	0.00	7,577.6	-237.5	-232.0	330.3	0.00	0.00	0.00
7,700.0	0.00	0.00	7,677.6	-237.5	-232.0	330.3	0.00	0.00	0.00
7,800.0	0.00	0.00	7,777.6	-237.5	-232.0	330.3	0.00	0.00	0.00
7,900.0	0.00	0.00	7,877.6	-237.5	-232.0	330.3	0.00	0.00	0.00
8,000.0	0.00	0.00	7,977.6	-237.5	-232.0	330.3	0.00	0.00	0.00
Build 1.5° / 100' - Ohio Creek									
8,079.4	0.00	0.00	8,057.0	-237.5	-232.0	330.3	0.00	0.00	0.00
8,100.0	0.31	250.00	8,077.6	-237.6	-232.0	330.3	1.50	1.50	0.00
EOB @ 1.37° Inc. / 250.00° Azm									
8,170.8	1.37	250.00	8,148.4	-237.9	-233.0	331.3	1.50	1.50	0.00
8,200.0	1.37	250.00	8,177.6	-238.2	-233.6	332.0	0.00	0.00	0.00
8,300.0	1.37	250.00	8,277.6	-239.0	-235.9	334.2	0.00	0.00	0.00
8,400.0	1.37	250.00	8,377.6	-239.8	-238.1	336.5	0.00	0.00	0.00
Williams Fork									
8,436.4	1.37	250.00	8,414.0	-240.1	-239.0	337.3	0.00	0.00	0.00

Database:	EDM 5000.1 Single User Db	Local Co-ordinate Reference:	Well BJU M23A FED 15A-23 496 - Slot 15A-23
Company:	Caerus Oil & Gas	TVD Reference:	RKB @ 8134.0usft (30')
Project:	Garfield County, CO	MD Reference:	RKB @ 8134.0usft (30')
Site:	BJU M23A 496 Pad	North Reference:	True
Well:	BJU M23A FED 15A-23 496	Survey Calculation Method:	Minimum Curvature
Wellbore:	Wellbore #1		
Design:	Design #3		

Planned Survey									
Measured Depth (usft)	Inclination (°)	Azimuth (°)	Vertical Depth (usft)	+N/-S (usft)	+E/-W (usft)	Vertical Section (usft)	Dogleg Rate (°/100usft)	Build Rate (°/100usft)	Turn Rate (°/100usft)
8,500.0	1.37	250.00	8,477.5	-240.6	-240.4	338.7	0.00	0.00	0.00
8,600.0	1.37	250.00	8,577.5	-241.4	-242.6	341.0	0.00	0.00	0.00
8,700.0	1.37	250.00	8,677.5	-242.3	-244.9	343.2	0.00	0.00	0.00
8,800.0	1.37	250.00	8,777.5	-243.1	-247.1	345.5	0.00	0.00	0.00
8,900.0	1.37	250.00	8,877.4	-243.9	-249.4	347.7	0.00	0.00	0.00
9,000.0	1.37	250.00	8,977.4	-244.7	-251.6	350.0	0.00	0.00	0.00
9,100.0	1.37	250.00	9,077.4	-245.5	-253.9	352.2	0.00	0.00	0.00
9,200.0	1.37	250.00	9,177.3	-246.3	-256.1	354.5	0.00	0.00	0.00
9,300.0	1.37	250.00	9,277.3	-247.2	-258.4	356.7	0.00	0.00	0.00
9,400.0	1.37	250.00	9,377.3	-248.0	-260.6	359.0	0.00	0.00	0.00
9,500.0	1.37	250.00	9,477.3	-248.8	-262.9	361.2	0.00	0.00	0.00
9,600.0	1.37	250.00	9,577.2	-249.6	-265.1	363.5	0.00	0.00	0.00
9,700.0	1.37	250.00	9,677.2	-250.4	-267.4	365.7	0.00	0.00	0.00
9,800.0	1.37	250.00	9,777.2	-251.3	-269.6	368.0	0.00	0.00	0.00
9,900.0	1.37	250.00	9,877.1	-252.1	-271.9	370.2	0.00	0.00	0.00
10,000.0	1.37	250.00	9,977.1	-252.9	-274.1	372.5	0.00	0.00	0.00
10,100.0	1.37	250.00	10,077.1	-253.7	-276.4	374.8	0.00	0.00	0.00
10,200.0	1.37	250.00	10,177.1	-254.5	-278.6	377.0	0.00	0.00	0.00
10,300.0	1.37	250.00	10,277.0	-255.4	-280.9	379.3	0.00	0.00	0.00
10,400.0	1.37	250.00	10,377.0	-256.2	-283.1	381.5	0.00	0.00	0.00
10,500.0	1.37	250.00	10,477.0	-257.0	-285.4	383.8	0.00	0.00	0.00
10,600.0	1.37	250.00	10,576.9	-257.8	-287.6	386.0	0.00	0.00	0.00
10,700.0	1.37	250.00	10,676.9	-258.6	-289.9	388.3	0.00	0.00	0.00
10,800.0	1.37	250.00	10,776.9	-259.4	-292.1	390.5	0.00	0.00	0.00
10,900.0	1.37	250.00	10,876.9	-260.3	-294.4	392.8	0.00	0.00	0.00
11,000.0	1.37	250.00	10,976.8	-261.1	-296.6	395.0	0.00	0.00	0.00
11,100.0	1.37	250.00	11,076.8	-261.9	-298.9	397.3	0.00	0.00	0.00
11,200.0	1.37	250.00	11,176.8	-262.7	-301.1	399.5	0.00	0.00	0.00
11,300.0	1.37	250.00	11,276.7	-263.5	-303.4	401.8	0.00	0.00	0.00
Cameo									
11,302.3	1.37	250.00	11,279.0	-263.6	-303.4	401.8	0.00	0.00	0.00
11,400.0	1.37	250.00	11,376.7	-264.4	-305.6	404.0	0.00	0.00	0.00
11,500.0	1.37	250.00	11,476.7	-265.2	-307.9	406.3	0.00	0.00	0.00
11,600.0	1.37	250.00	11,576.7	-266.0	-310.1	408.5	0.00	0.00	0.00
11,700.0	1.37	250.00	11,676.6	-266.8	-312.4	410.8	0.00	0.00	0.00
11,800.0	1.37	250.00	11,776.6	-267.6	-314.6	413.0	0.00	0.00	0.00
Rollins									
11,802.4	1.37	250.00	11,779.0	-267.7	-314.7	413.1	0.00	0.00	0.00
11,900.0	1.37	250.00	11,876.6	-268.5	-316.9	415.3	0.00	0.00	0.00
12,000.0	1.37	250.00	11,976.5	-269.3	-319.1	417.5	0.00	0.00	0.00
12,100.0	1.37	250.00	12,076.5	-270.1	-321.4	419.8	0.00	0.00	0.00
12,200.0	1.37	250.00	12,176.5	-270.9	-323.6	422.0	0.00	0.00	0.00
TD @ 12302.5' MD / 12279.0' TVD									
12,302.5	1.37	250.00	12,279.0	-271.7	-325.9	424.4	0.00	0.00	0.00

Database:	EDM 5000.1 Single User Db	Local Co-ordinate Reference:	Well BJU M23A FED 15A-23 496 - Slot 15A-23
Company:	Caerus Oil & Gas	TVD Reference:	RKB @ 8134.0usft (30')
Project:	Garfield County, CO	MD Reference:	RKB @ 8134.0usft (30')
Site:	BJU M23A 496 Pad	North Reference:	True
Well:	BJU M23A FED 15A-23 496	Survey Calculation Method:	Minimum Curvature
Wellbore:	Wellbore #1		
Design:	Design #3		

Design Targets

Target Name - hit/miss target - Shape	Dip Angle (°)	Dip Dir. (°)	TVD (usft)	+N/-S (usft)	+E/-W (usft)	Northing (usft)	Easting (usft)	Latitude	Longitude
OHCR - 15A-23 - plan hits target center - Point	0.00	0.00	8,057.0	-237.5	-232.0	14,423,574.48	2,444,835.83	39.683374	-108.141055
PBHL - 15A-23 - plan hits target center - Ellipse (radii L100.0 W50.0 on 250.00 azi)	0.00	0.00	12,279.0	-271.7	-325.9	14,423,537.30	2,444,743.00	39.683280	-108.141389

Formations

Measured Depth (usft)	Vertical Depth (usft)	Name	Lithology	Dip (°)	Dip Direction (°)
3,364.3	3,343.0	Wasatch			
5,765.4	5,743.0	Wasatch G			
6,065.4	6,043.0	Fort Union			
8,079.4	8,057.0	Ohio Creek			
8,436.4	8,414.0	Williams Fork			
11,302.3	11,279.0	Cameo			
11,802.4	11,779.0	Rollins			

Plan Annotations

Measured Depth (usft)	Vertical Depth (usft)	Local Coordinates		Comment
		+N/-S (usft)	+E/-W (usft)	
1,000.0	1,000.0	0.0	0.0	Build 3° / 100'
1,266.7	1,265.9	-13.3	-13.0	EOB @ 8.00° Inc. / 224.32° Azm
3,384.6	3,363.1	-224.2	-219.0	Drop 3° / 100'
3,651.4	3,629.0	-237.5	-232.0	EOD @ Vertical
8,079.4	8,057.0	-237.5	-232.0	Build 1.5° / 100'
8,170.8	8,148.4	-237.9	-233.0	EOB @ 1.37° Inc. / 250.00° Azm
12,302.5	12,279.0	-271.7	-325.9	TD @ 12302.5' MD / 12279.0' TVD