

Project: Garfield County, CO  
 Site: BJU M23A 496 Pad  
 Well: BJU M23A FED 25B-22 496  
 Wellbore: Wellbore #1  
 Design: Design #3  
 Latitude: 39.684074  
 Longitude: -108.140214  
 Ground Level: 8104.0  
 RKB @ 8134.0usft (30')

# PROJECT DETAILS: Garfield County, CO

Geodetic System: Universal Transverse Mercator (US Survey Feet)  
 Datum: NAD 1927 - Western US  
 Ellipsoid: Clarke 1866  
 Zone: Zone 12N (114 W to 108 W)  
 System Datum: Mean Sea Level

## REFERENCE INFORMATION

Vertical (TVD) Reference: RKB @ 8134.0usft (30')  
 Section (VS) Reference: Slot - 25B-22(0.0N, 0.0E)  
 Measured Depth Reference: RKB @ 8134.0usft (30')  
 Calculation Method: Minimum Curvature

## SECTION DETAILS

MD	Inc	Azi	TVD	+N/-S	+E/-W	Dleg	TFace	V Sect	Annotation
0.0	0.00	0.00	0.0	0.0	0.0	0.00	0.00	0.0	
270.0	0.00	0.00	270.0	0.0	0.0	0.00	0.00	0.0	Build 3° / 100'
840.9	17.13	275.96	832.4	8.8	-84.2	3.00	275.96	84.7	EOB @ 17.13° Inc. / 275.96° Azm
7780.8	17.13	275.96	7464.6	221.2	-2116.9	0.00	0.00	2128.1	Drop 3° / 100'
8351.7	0.00	0.00	8027.0	230.0	-2201.2	3.00	180.00	2212.7	EOD @ Vertical / Build 1.5° / 100'
8444.5	1.39	250.00	8119.8	229.6	-2202.2	1.50	250.00	2213.8	EOB @ 1.39° Inc. / 250.00° Azm
12515.9	1.39	250.00	12190.0	195.8	-2295.1	0.00	0.00	2303.5	TD @ 12515.9' MD / 12190.0' TVD

## FORMATION TOP DETAILS

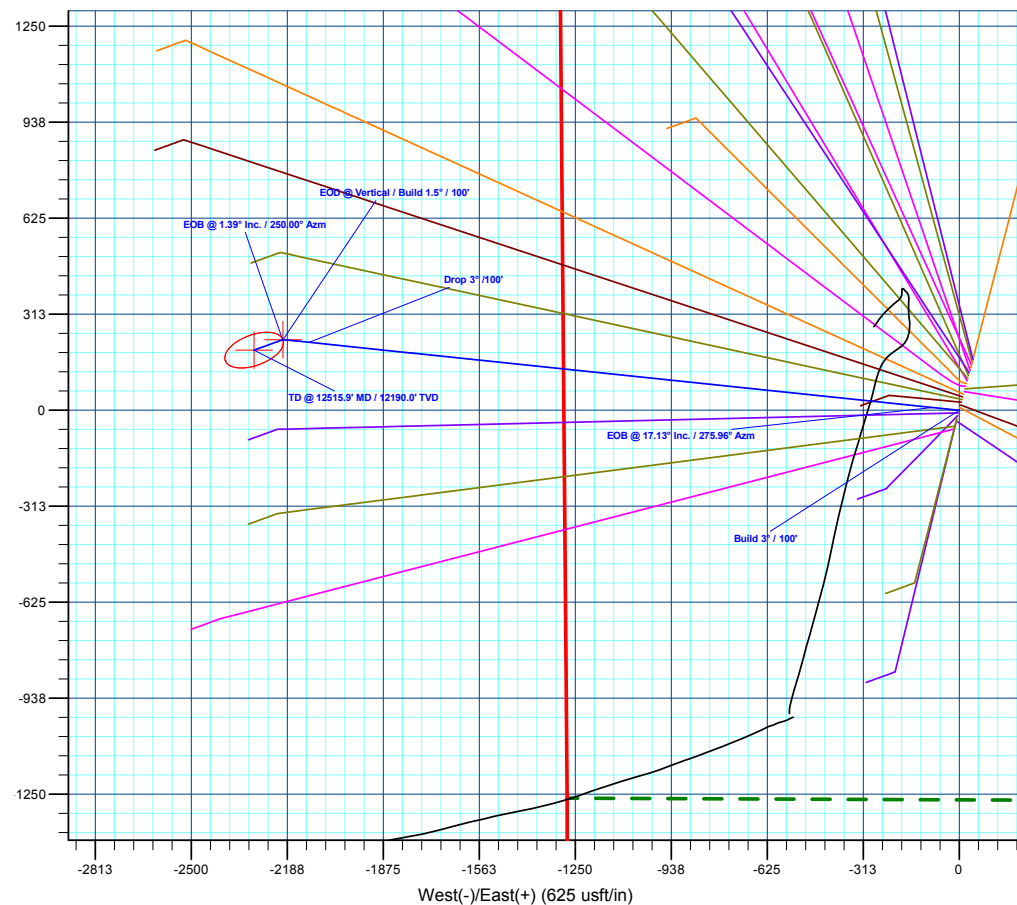
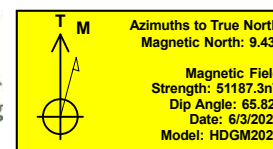
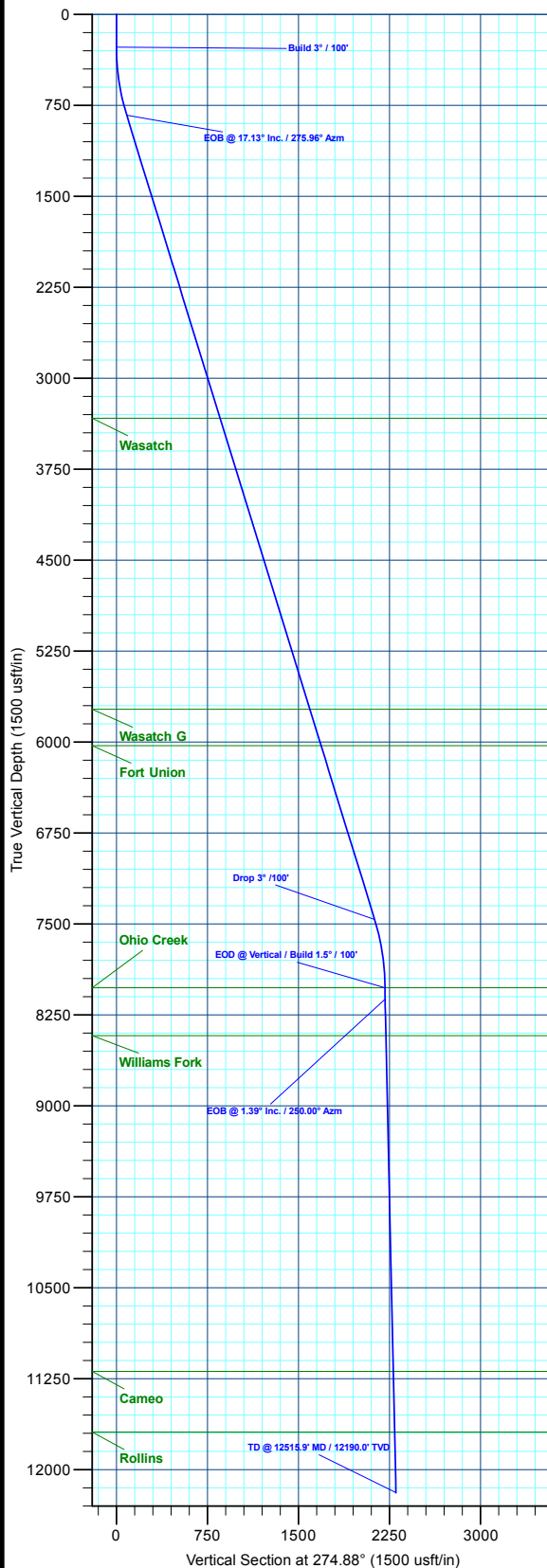
TVDPath	MDPath	Formation
3330.0	3454.4	Wasatch
5730.0	5965.7	Wasatch G
6030.0	6279.7	Fort Union
8027.0	8351.7	Ohio Creek
8422.0	8746.8	Williams Fork
11190.0	11515.6	Cameo
11690.0	12015.8	Rollins

## DESIGN TARGET DETAILS

Name	TVD	+N/-S	+E/-W	Northing	Easting	Latitude	Longitude
OHCR - 25B-22	8027.0	230.0	-2201.2	14423996.48	2442856.93	39.684705	-108.148032
PBHL - 25B-22	12190.0	195.8	-2295.1	14423959.30	2442764.10	39.684611	-108.148366

## WELL DETAILS: BJU M23A FED 25B-22 496

+N/-S	+E/-W	Ground Level : 8104.0	Northing	Easting	Latitude	Longitude
0.0	0.0		14423836.80	2445064.30	39.684074	-108.140214
						25B-22



Plan: Design #3 (BJU M23A FED 25B-22 496/Wellbore #1)

Created By: Will Jircik

Date: 5:25, January 05 2023



## **Caerus Oil & Gas**

**Garfield County, CO**

**BJU M23A 496 Pad**

**BJU M23A FED 25B-22 496 - Slot 25B-22**

**Wellbore #1**

**Plan: Design #3**

## **KLX Well Planning Report**

**05 January, 2023**



<b>Database:</b>	EDM 5000.1 Single User Db	<b>Local Co-ordinate Reference:</b>	Well BJU M23A FED 25B-22 496 - Slot 25B-22
<b>Company:</b>	Caerus Oil & Gas	<b>TVD Reference:</b>	RKB @ 8134.0usft (30')
<b>Project:</b>	Garfield County, CO	<b>MD Reference:</b>	RKB @ 8134.0usft (30')
<b>Site:</b>	BJU M23A 496 Pad	<b>North Reference:</b>	True
<b>Well:</b>	BJU M23A FED 25B-22 496	<b>Survey Calculation Method:</b>	Minimum Curvature
<b>Wellbore:</b>	Wellbore #1		
<b>Design:</b>	Design #3		

<b>Project</b>	Garfield County, CO		
<b>Map System:</b>	Universal Transverse Mercator (US Survey Fee	<b>System Datum:</b>	Mean Sea Level
<b>Geo Datum:</b>	NAD 1927 - Western US		
<b>Map Zone:</b>	Zone 12N (114 W to 108 W)		

<b>Site</b>	BJU M23A 496 Pad		
<b>Site Position:</b>		<b>Northing:</b>	14,424,028.50 usft
<b>From:</b>	Map	<b>Easting:</b>	2,445,109.60 usft
<b>Position Uncertainty:</b>	0.0 usft	<b>Slot Radius:</b>	13-3/16 "
		<b>Latitude:</b>	39.684596
		<b>Longitude:</b>	-108.140032
		<b>Grid Convergence:</b>	1.83 °

<b>Well</b>	BJU M23A FED 25B-22 496 - Slot 25B-22		
<b>Well Position</b>	<b>+N/-S</b>	-190.2 usft	<b>Northing:</b> 14,423,836.80 usft
	<b>+E/-W</b>	-51.4 usft	<b>Easting:</b> 2,445,064.30 usft
<b>Position Uncertainty</b>	0.0 usft	<b>Wellhead Elevation:</b>	<b>Latitude:</b> 39.684074
			<b>Longitude:</b> -108.140215
			<b>Ground Level:</b> 8,104.0 usft

<b>Wellbore</b>	Wellbore #1				
<b>Magnetics</b>	<b>Model Name</b>	<b>Sample Date</b>	<b>Declination (°)</b>	<b>Dip Angle (°)</b>	<b>Field Strength (nT)</b>
	HDGM2020	6/3/2020	9.43	65.82	51,187.30000000

<b>Design</b>	Design #3				
<b>Audit Notes:</b>					
<b>Version:</b>	<b>Phase:</b>	PLAN	<b>Tie On Depth:</b>	0.0	
<b>Vertical Section:</b>	<b>Depth From (TVD) (usft)</b>	<b>+N/-S (usft)</b>	<b>+E/-W (usft)</b>	<b>Direction (°)</b>	
	0.0	0.0	0.0	274.88	

<b>Plan Sections</b>										
<b>Measured Depth (usft)</b>	<b>Inclination (°)</b>	<b>Azimuth (°)</b>	<b>Vertical Depth (usft)</b>	<b>+N/-S (usft)</b>	<b>+E/-W (usft)</b>	<b>Dogleg Rate (°/100usft)</b>	<b>Build Rate (°/100usft)</b>	<b>Turn Rate (°/100usft)</b>	<b>TFO (°)</b>	<b>Target</b>
0.0	0.00	0.00	0.0	0.0	0.0	0.00	0.00	0.00	0.00	
270.0	0.00	0.00	270.0	0.0	0.0	0.00	0.00	0.00	0.00	
840.9	17.13	275.96	832.4	8.8	-84.2	3.00	3.00	0.00	275.96	
7,780.8	17.13	275.96	7,464.6	221.2	-2,116.9	0.00	0.00	0.00	0.00	
8,351.7	0.00	0.00	8,027.0	230.0	-2,201.2	3.00	-3.00	0.00	180.00	OHCR - 25B-22
8,444.5	1.39	250.00	8,119.8	229.6	-2,202.2	1.50	1.50	-118.57	250.00	
12,515.9	1.39	250.00	12,190.0	195.8	-2,295.1	0.00	0.00	0.00	0.00	PBHL - 25B-22

<b>Database:</b>	EDM 5000.1 Single User Db	<b>Local Co-ordinate Reference:</b>	Well BJU M23A FED 25B-22 496 - Slot 25B-22
<b>Company:</b>	Caerus Oil & Gas	<b>TVD Reference:</b>	RKB @ 8134.0usft (30')
<b>Project:</b>	Garfield County, CO	<b>MD Reference:</b>	RKB @ 8134.0usft (30')
<b>Site:</b>	BJU M23A 496 Pad	<b>North Reference:</b>	True
<b>Well:</b>	BJU M23A FED 25B-22 496	<b>Survey Calculation Method:</b>	Minimum Curvature
<b>Wellbore:</b>	Wellbore #1		
<b>Design:</b>	Design #3		

**Planned Survey**

Measured Depth (usft)	Inclination (°)	Azimuth (°)	Vertical Depth (usft)	+N/-S (usft)	+E/-W (usft)	Vertical Section (usft)	Dogleg Rate (°/100usft)	Build Rate (°/100usft)	Turn Rate (°/100usft)
0.0	0.00	0.00	0.0	0.0	0.0	0.0	0.00	0.00	0.00
100.0	0.00	0.00	100.0	0.0	0.0	0.0	0.00	0.00	0.00
200.0	0.00	0.00	200.0	0.0	0.0	0.0	0.00	0.00	0.00
<b>Build 3° / 100'</b>									
270.0	0.00	0.00	270.0	0.0	0.0	0.0	0.00	0.00	0.00
300.0	0.90	275.96	300.0	0.0	-0.2	0.2	3.00	3.00	0.00
400.0	3.90	275.96	399.9	0.5	-4.4	4.4	3.00	3.00	0.00
500.0	6.90	275.96	499.4	1.4	-13.8	13.8	3.00	3.00	0.00
600.0	9.90	275.96	598.4	3.0	-28.3	28.4	3.00	3.00	0.00
700.0	12.90	275.96	696.4	5.0	-47.9	48.2	3.00	3.00	0.00
800.0	15.90	275.96	793.2	7.6	-72.7	73.1	3.00	3.00	0.00
<b>EOB @ 17.13° Inc. / 275.96° Azm</b>									
840.9	17.13	275.96	832.4	8.8	-84.2	84.7	3.00	3.00	0.00
900.0	17.13	275.96	888.9	10.6	-101.5	102.1	0.00	0.00	0.00
1,000.0	17.13	275.96	984.5	13.7	-130.8	131.5	0.00	0.00	0.00
1,100.0	17.13	275.96	1,080.0	16.7	-160.1	161.0	0.00	0.00	0.00
1,200.0	17.13	275.96	1,175.6	19.8	-189.4	190.4	0.00	0.00	0.00
1,300.0	17.13	275.96	1,271.2	22.9	-218.7	219.9	0.00	0.00	0.00
1,400.0	17.13	275.96	1,366.7	25.9	-248.0	249.3	0.00	0.00	0.00
1,500.0	17.13	275.96	1,462.3	29.0	-277.3	278.7	0.00	0.00	0.00
1,600.0	17.13	275.96	1,557.9	32.0	-306.6	308.2	0.00	0.00	0.00
1,700.0	17.13	275.96	1,653.4	35.1	-335.9	337.6	0.00	0.00	0.00
1,800.0	17.13	275.96	1,749.0	38.2	-365.2	367.1	0.00	0.00	0.00
1,900.0	17.13	275.96	1,844.6	41.2	-394.4	396.5	0.00	0.00	0.00
2,000.0	17.13	275.96	1,940.1	44.3	-423.7	426.0	0.00	0.00	0.00
2,100.0	17.13	275.96	2,035.7	47.3	-453.0	455.4	0.00	0.00	0.00
2,200.0	17.13	275.96	2,131.3	50.4	-482.3	484.9	0.00	0.00	0.00
2,300.0	17.13	275.96	2,226.8	53.5	-511.6	514.3	0.00	0.00	0.00
2,400.0	17.13	275.96	2,322.4	56.5	-540.9	543.7	0.00	0.00	0.00
2,500.0	17.13	275.96	2,418.0	59.6	-570.2	573.2	0.00	0.00	0.00
2,600.0	17.13	275.96	2,513.5	62.6	-599.5	602.6	0.00	0.00	0.00
2,700.0	17.13	275.96	2,609.1	65.7	-628.8	632.1	0.00	0.00	0.00
2,800.0	17.13	275.96	2,704.7	68.8	-658.1	661.5	0.00	0.00	0.00
2,900.0	17.13	275.96	2,800.2	71.8	-687.3	691.0	0.00	0.00	0.00
3,000.0	17.13	275.96	2,895.8	74.9	-716.6	720.4	0.00	0.00	0.00
3,100.0	17.13	275.96	2,991.4	77.9	-745.9	749.8	0.00	0.00	0.00
3,200.0	17.13	275.96	3,086.9	81.0	-775.2	779.3	0.00	0.00	0.00
3,300.0	17.13	275.96	3,182.5	84.1	-804.5	808.7	0.00	0.00	0.00
3,400.0	17.13	275.96	3,278.0	87.1	-833.8	838.2	0.00	0.00	0.00
<b>Wasatch</b>									
3,454.4	17.13	275.96	3,330.0	88.8	-849.7	854.2	0.00	0.00	0.00
3,500.0	17.13	275.96	3,373.6	90.2	-863.1	867.6	0.00	0.00	0.00
3,600.0	17.13	275.96	3,469.2	93.2	-892.4	897.1	0.00	0.00	0.00
3,700.0	17.13	275.96	3,564.7	96.3	-921.7	926.5	0.00	0.00	0.00
3,800.0	17.13	275.96	3,660.3	99.4	-951.0	956.0	0.00	0.00	0.00
3,900.0	17.13	275.96	3,755.9	102.4	-980.2	985.4	0.00	0.00	0.00
4,000.0	17.13	275.96	3,851.4	105.5	-1,009.5	1,014.8	0.00	0.00	0.00
4,100.0	17.13	275.96	3,947.0	108.5	-1,038.8	1,044.3	0.00	0.00	0.00
4,200.0	17.13	275.96	4,042.6	111.6	-1,068.1	1,073.7	0.00	0.00	0.00
4,300.0	17.13	275.96	4,138.1	114.7	-1,097.4	1,103.2	0.00	0.00	0.00
4,400.0	17.13	275.96	4,233.7	117.7	-1,126.7	1,132.6	0.00	0.00	0.00
4,500.0	17.13	275.96	4,329.3	120.8	-1,156.0	1,162.1	0.00	0.00	0.00
4,600.0	17.13	275.96	4,424.8	123.8	-1,185.3	1,191.5	0.00	0.00	0.00

<b>Database:</b>	EDM 5000.1 Single User Db	<b>Local Co-ordinate Reference:</b>	Well BJU M23A FED 25B-22 496 - Slot 25B-22
<b>Company:</b>	Caerus Oil & Gas	<b>TVD Reference:</b>	RKB @ 8134.0usft (30')
<b>Project:</b>	Garfield County, CO	<b>MD Reference:</b>	RKB @ 8134.0usft (30')
<b>Site:</b>	BJU M23A 496 Pad	<b>North Reference:</b>	True
<b>Well:</b>	BJU M23A FED 25B-22 496	<b>Survey Calculation Method:</b>	Minimum Curvature
<b>Wellbore:</b>	Wellbore #1		
<b>Design:</b>	Design #3		

**Planned Survey**

Measured Depth (usft)	Inclination (°)	Azimuth (°)	Vertical Depth (usft)	+N/-S (usft)	+E/-W (usft)	Vertical Section (usft)	Dogleg Rate (°/100usft)	Build Rate (°/100usft)	Turn Rate (°/100usft)
4,700.0	17.13	275.96	4,520.4	126.9	-1,214.6	1,221.0	0.00	0.00	0.00
4,800.0	17.13	275.96	4,616.0	130.0	-1,243.9	1,250.4	0.00	0.00	0.00
4,900.0	17.13	275.96	4,711.5	133.0	-1,273.1	1,279.8	0.00	0.00	0.00
5,000.0	17.13	275.96	4,807.1	136.1	-1,302.4	1,309.3	0.00	0.00	0.00
5,100.0	17.13	275.96	4,902.7	139.1	-1,331.7	1,338.7	0.00	0.00	0.00
5,200.0	17.13	275.96	4,998.2	142.2	-1,361.0	1,368.2	0.00	0.00	0.00
5,300.0	17.13	275.96	5,093.8	145.3	-1,390.3	1,397.6	0.00	0.00	0.00
5,400.0	17.13	275.96	5,189.4	148.3	-1,419.6	1,427.1	0.00	0.00	0.00
5,500.0	17.13	275.96	5,284.9	151.4	-1,448.9	1,456.5	0.00	0.00	0.00
5,600.0	17.13	275.96	5,380.5	154.4	-1,478.2	1,485.9	0.00	0.00	0.00
5,700.0	17.13	275.96	5,476.1	157.5	-1,507.5	1,515.4	0.00	0.00	0.00
5,800.0	17.13	275.96	5,571.6	160.6	-1,536.8	1,544.8	0.00	0.00	0.00
5,900.0	17.13	275.96	5,667.2	163.6	-1,566.0	1,574.3	0.00	0.00	0.00
<b>Wasatch G</b>									
5,965.7	17.13	275.96	5,730.0	165.6	-1,585.3	1,593.6	0.00	0.00	0.00
6,000.0	17.13	275.96	5,762.7	166.7	-1,595.3	1,603.7	0.00	0.00	0.00
6,100.0	17.13	275.96	5,858.3	169.7	-1,624.6	1,633.2	0.00	0.00	0.00
6,200.0	17.13	275.96	5,953.9	172.8	-1,653.9	1,662.6	0.00	0.00	0.00
<b>Fort Union</b>									
6,279.7	17.13	275.96	6,030.0	175.2	-1,677.2	1,686.1	0.00	0.00	0.00
6,300.0	17.13	275.96	6,049.4	175.9	-1,683.2	1,692.1	0.00	0.00	0.00
6,400.0	17.13	275.96	6,145.0	178.9	-1,712.5	1,721.5	0.00	0.00	0.00
6,500.0	17.13	275.96	6,240.6	182.0	-1,741.8	1,750.9	0.00	0.00	0.00
6,600.0	17.13	275.96	6,336.1	185.0	-1,771.1	1,780.4	0.00	0.00	0.00
6,700.0	17.13	275.96	6,431.7	188.1	-1,800.4	1,809.8	0.00	0.00	0.00
6,800.0	17.13	275.96	6,527.3	191.2	-1,829.6	1,839.3	0.00	0.00	0.00
6,900.0	17.13	275.96	6,622.8	194.2	-1,858.9	1,868.7	0.00	0.00	0.00
7,000.0	17.13	275.96	6,718.4	197.3	-1,888.2	1,898.2	0.00	0.00	0.00
7,100.0	17.13	275.96	6,814.0	200.3	-1,917.5	1,927.6	0.00	0.00	0.00
7,200.0	17.13	275.96	6,909.5	203.4	-1,946.8	1,957.1	0.00	0.00	0.00
7,300.0	17.13	275.96	7,005.1	206.5	-1,976.1	1,986.5	0.00	0.00	0.00
7,400.0	17.13	275.96	7,100.7	209.5	-2,005.4	2,015.9	0.00	0.00	0.00
7,500.0	17.13	275.96	7,196.2	212.6	-2,034.7	2,045.4	0.00	0.00	0.00
7,600.0	17.13	275.96	7,291.8	215.6	-2,064.0	2,074.8	0.00	0.00	0.00
7,700.0	17.13	275.96	7,387.4	218.7	-2,093.3	2,104.3	0.00	0.00	0.00
<b>Drop 3° /100'</b>									
7,780.8	17.13	275.96	7,464.6	221.2	-2,116.9	2,128.1	0.00	0.00	0.00
7,800.0	16.55	275.96	7,483.0	221.8	-2,122.5	2,133.6	3.00	-3.00	0.00
7,900.0	13.55	275.96	7,579.5	224.5	-2,148.3	2,159.6	3.00	-3.00	0.00
8,000.0	10.55	275.96	7,677.3	226.6	-2,169.0	2,180.5	3.00	-3.00	0.00
8,100.0	7.55	275.96	7,776.0	228.3	-2,184.7	2,196.2	3.00	-3.00	0.00
8,200.0	4.55	275.96	7,875.5	229.4	-2,195.2	2,206.7	3.00	-3.00	0.00
8,300.0	1.55	275.96	7,975.3	229.9	-2,200.5	2,212.0	3.00	-3.00	0.00
<b>EOD @ Vertical / Build 1.5° / 100' - Ohio Creek</b>									
8,351.7	0.00	0.00	8,027.0	230.0	-2,201.2	2,212.7	3.00	-3.00	0.00
8,400.0	0.72	250.00	8,075.3	229.9	-2,201.4	2,213.0	1.50	1.50	0.00
<b>EOB @ 1.39° Inc. / 250.00° Azm</b>									
8,444.5	1.39	250.00	8,119.8	229.6	-2,202.2	2,213.8	1.50	1.50	0.00
8,500.0	1.39	250.00	8,175.3	229.1	-2,203.5	2,215.0	0.00	0.00	0.00
8,600.0	1.39	250.00	8,275.3	228.3	-2,205.8	2,217.2	0.00	0.00	0.00
8,700.0	1.39	250.00	8,375.2	227.5	-2,208.0	2,219.4	0.00	0.00	0.00
<b>Williams Fork</b>									

<b>Database:</b>	EDM 5000.1 Single User Db	<b>Local Co-ordinate Reference:</b>	Well BJU M23A FED 25B-22 496 - Slot 25B-22
<b>Company:</b>	Caerus Oil & Gas	<b>TVD Reference:</b>	RKB @ 8134.0usft (30')
<b>Project:</b>	Garfield County, CO	<b>MD Reference:</b>	RKB @ 8134.0usft (30')
<b>Site:</b>	BJU M23A 496 Pad	<b>North Reference:</b>	True
<b>Well:</b>	BJU M23A FED 25B-22 496	<b>Survey Calculation Method:</b>	Minimum Curvature
<b>Wellbore:</b>	Wellbore #1		
<b>Design:</b>	Design #3		

Planned Survey									
Measured Depth (usft)	Inclination (°)	Azimuth (°)	Vertical Depth (usft)	+N/-S (usft)	+E/-W (usft)	Vertical Section (usft)	Dogleg Rate (°/100usft)	Build Rate (°/100usft)	Turn Rate (°/100usft)
8,746.8	1.39	250.00	8,422.0	227.1	-2,209.1	2,220.4	0.00	0.00	0.00
8,800.0	1.39	250.00	8,475.2	226.6	-2,210.3	2,221.6	0.00	0.00	0.00
8,900.0	1.39	250.00	8,575.2	225.8	-2,212.6	2,223.8	0.00	0.00	0.00
9,000.0	1.39	250.00	8,675.1	225.0	-2,214.9	2,226.0	0.00	0.00	0.00
9,100.0	1.39	250.00	8,775.1	224.1	-2,217.2	2,228.2	0.00	0.00	0.00
9,200.0	1.39	250.00	8,875.1	223.3	-2,219.5	2,230.4	0.00	0.00	0.00
9,300.0	1.39	250.00	8,975.1	222.5	-2,221.7	2,232.6	0.00	0.00	0.00
9,400.0	1.39	250.00	9,075.0	221.7	-2,224.0	2,234.8	0.00	0.00	0.00
9,500.0	1.39	250.00	9,175.0	220.8	-2,226.3	2,237.0	0.00	0.00	0.00
9,600.0	1.39	250.00	9,275.0	220.0	-2,228.6	2,239.2	0.00	0.00	0.00
9,700.0	1.39	250.00	9,374.9	219.2	-2,230.9	2,241.4	0.00	0.00	0.00
9,800.0	1.39	250.00	9,474.9	218.3	-2,233.1	2,243.6	0.00	0.00	0.00
9,900.0	1.39	250.00	9,574.9	217.5	-2,235.4	2,245.8	0.00	0.00	0.00
10,000.0	1.39	250.00	9,674.8	216.7	-2,237.7	2,248.0	0.00	0.00	0.00
10,100.0	1.39	250.00	9,774.8	215.8	-2,240.0	2,250.2	0.00	0.00	0.00
10,200.0	1.39	250.00	9,874.8	215.0	-2,242.3	2,252.4	0.00	0.00	0.00
10,300.0	1.39	250.00	9,974.8	214.2	-2,244.6	2,254.6	0.00	0.00	0.00
10,400.0	1.39	250.00	10,074.7	213.4	-2,246.8	2,256.8	0.00	0.00	0.00
10,500.0	1.39	250.00	10,174.7	212.5	-2,249.1	2,259.0	0.00	0.00	0.00
10,600.0	1.39	250.00	10,274.7	211.7	-2,251.4	2,261.2	0.00	0.00	0.00
10,700.0	1.39	250.00	10,374.6	210.9	-2,253.7	2,263.5	0.00	0.00	0.00
10,800.0	1.39	250.00	10,474.6	210.0	-2,256.0	2,265.7	0.00	0.00	0.00
10,900.0	1.39	250.00	10,574.6	209.2	-2,258.3	2,267.9	0.00	0.00	0.00
11,000.0	1.39	250.00	10,674.5	208.4	-2,260.5	2,270.1	0.00	0.00	0.00
11,100.0	1.39	250.00	10,774.5	207.5	-2,262.8	2,272.3	0.00	0.00	0.00
11,200.0	1.39	250.00	10,874.5	206.7	-2,265.1	2,274.5	0.00	0.00	0.00
11,300.0	1.39	250.00	10,974.5	205.9	-2,267.4	2,276.7	0.00	0.00	0.00
11,400.0	1.39	250.00	11,074.4	205.0	-2,269.7	2,278.9	0.00	0.00	0.00
11,500.0	1.39	250.00	11,174.4	204.2	-2,271.9	2,281.1	0.00	0.00	0.00
<b>Cameo</b>									
11,515.6	1.39	250.00	11,190.0	204.1	-2,272.3	2,281.4	0.00	0.00	0.00
11,600.0	1.39	250.00	11,274.4	203.4	-2,274.2	2,283.3	0.00	0.00	0.00
11,700.0	1.39	250.00	11,374.3	202.6	-2,276.5	2,285.5	0.00	0.00	0.00
11,800.0	1.39	250.00	11,474.3	201.7	-2,278.8	2,287.7	0.00	0.00	0.00
11,900.0	1.39	250.00	11,574.3	200.9	-2,281.1	2,289.9	0.00	0.00	0.00
12,000.0	1.39	250.00	11,674.3	200.1	-2,283.4	2,292.1	0.00	0.00	0.00
<b>Rollins</b>									
12,015.7	1.39	250.00	11,690.0	199.9	-2,283.7	2,292.4	0.00	0.00	0.00
12,100.0	1.39	250.00	11,774.2	199.2	-2,285.6	2,294.3	0.00	0.00	0.00
12,200.0	1.39	250.00	11,874.2	198.4	-2,287.9	2,296.5	0.00	0.00	0.00
12,300.0	1.39	250.00	11,974.2	197.6	-2,290.2	2,298.7	0.00	0.00	0.00
12,400.0	1.39	250.00	12,074.1	196.7	-2,292.5	2,300.9	0.00	0.00	0.00
12,500.0	1.39	250.00	12,174.1	195.9	-2,294.8	2,303.1	0.00	0.00	0.00
<b>TD @ 12515.9' MD / 12190.0' TVD</b>									
12,515.9	1.39	250.00	12,190.0	195.8	-2,295.1	2,303.5	0.00	0.00	0.00

<b>Database:</b>	EDM 5000.1 Single User Db	<b>Local Co-ordinate Reference:</b>	Well BJU M23A FED 25B-22 496 - Slot 25B-22
<b>Company:</b>	Caerus Oil & Gas	<b>TVD Reference:</b>	RKB @ 8134.0usft (30')
<b>Project:</b>	Garfield County, CO	<b>MD Reference:</b>	RKB @ 8134.0usft (30')
<b>Site:</b>	BJU M23A 496 Pad	<b>North Reference:</b>	True
<b>Well:</b>	BJU M23A FED 25B-22 496	<b>Survey Calculation Method:</b>	Minimum Curvature
<b>Wellbore:</b>	Wellbore #1		
<b>Design:</b>	Design #3		

#### Design Targets

##### Target Name

- hit/miss target - Shape	Dip Angle (°)	Dip Dir. (°)	TVD (usft)	+N/-S (usft)	+E/-W (usft)	Northing (usft)	Easting (usft)	Latitude	Longitude
OHCR - 25B-22 - plan hits target center - Point	0.00	0.00	8,027.0	230.0	-2,201.2	14,423,996.48	2,442,856.93	39.684705	-108.148033
PBHL - 25B-22 - plan hits target center - Ellipse (radii L100.0 W50.0 on 250.00 azi)	0.00	0.00	12,190.0	195.8	-2,295.1	14,423,959.30	2,442,764.10	39.684611	-108.148366

#### Formations

Measured Depth (usft)	Vertical Depth (usft)	Name	Lithology	Dip (°)	Dip Direction (°)
3,454.4	3,330.0	Wasatch			
5,965.7	5,730.0	Wasatch G			
6,279.7	6,030.0	Fort Union			
8,351.7	8,027.0	Ohio Creek			
8,746.8	8,422.0	Williams Fork			
11,515.6	11,190.0	Cameo			
12,015.7	11,690.0	Rollins			

#### Plan Annotations

Measured Depth (usft)	Vertical Depth (usft)	Local Coordinates		Comment
		+N/-S (usft)	+E/-W (usft)	
270.0	270.0	0.0	0.0	Build 3° / 100'
840.9	832.4	8.8	-84.2	EOB @ 17.13° Inc. / 275.96° Azm
7,780.8	7,464.6	221.2	-2,116.9	Drop 3° / 100'
8,351.7	8,027.0	230.0	-2,201.2	EOD @ Vertical / Build 1.5° / 100'
8,444.5	8,119.8	229.6	-2,202.2	EOB @ 1.39° Inc. / 250.00° Azm
12,515.9	12,190.0	195.8	-2,295.1	TD @ 12515.9' MD / 12190.0' TVD