

T4S, R96W, 6th P.M.

Caerus Oil & Gas LLC

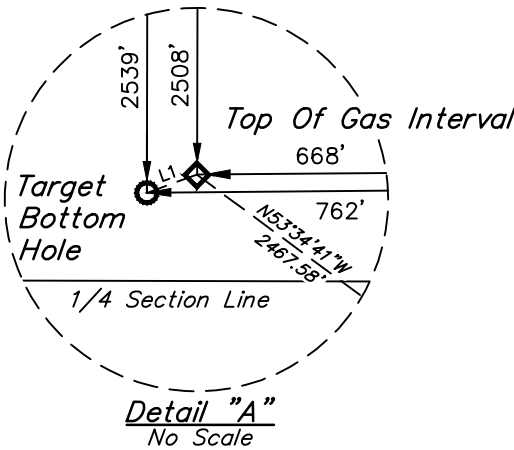
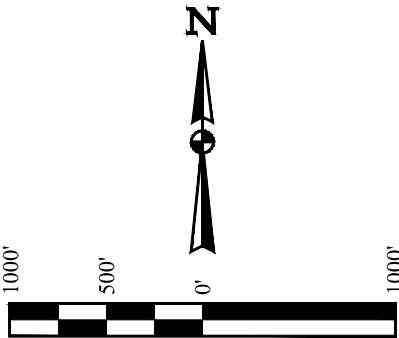
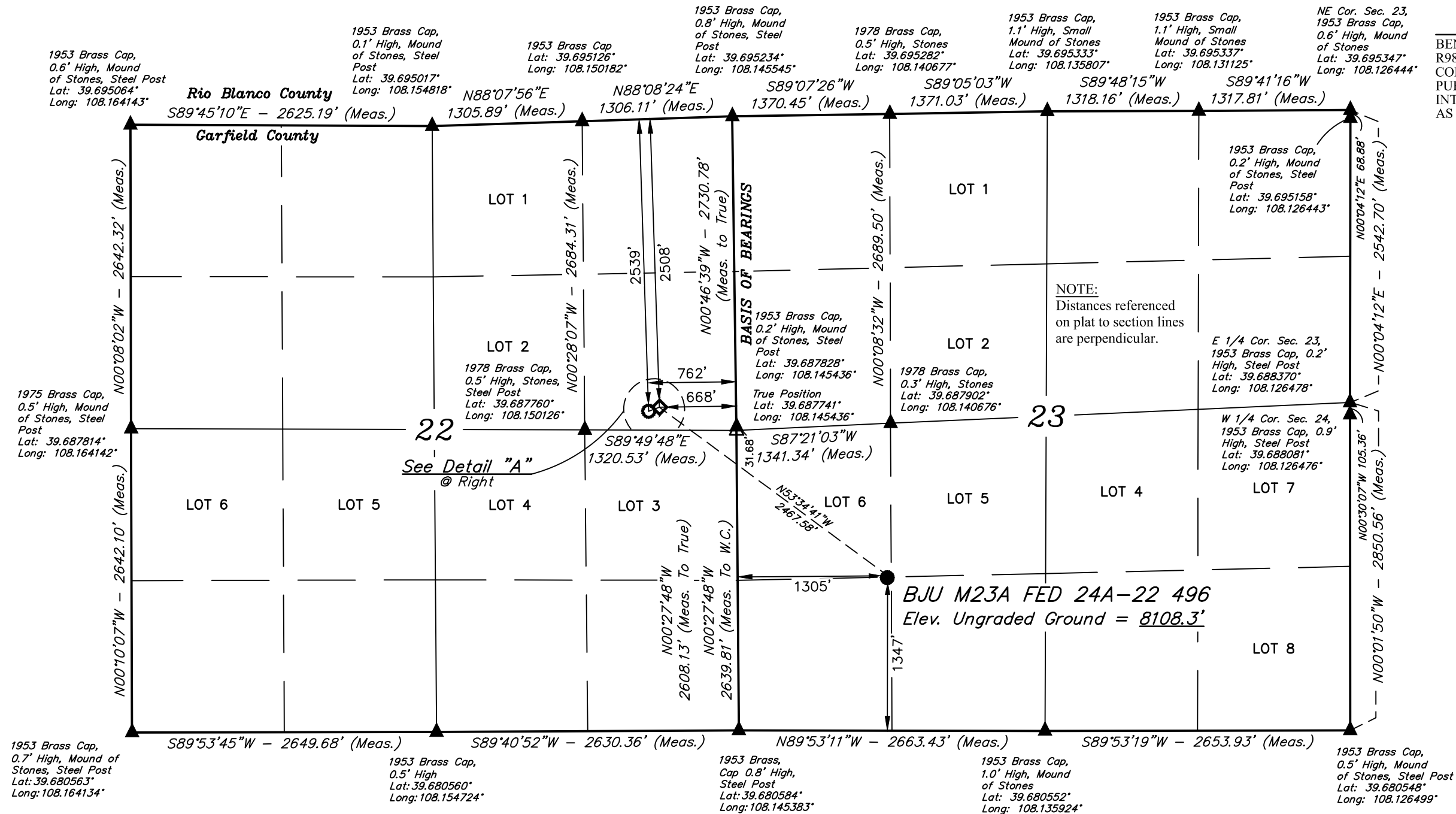
BJU M23A FED 24A-22 496  
LOT 6, SECTION 23, T4S, R96W, 6th P.M.  
GARFIELD COUNTY, COLORADO

BASIS OF BEARINGS

BEARINGS ARE BASED ON THE ASSUMPTION THAT THE WEST  
LINE OF THE NORTHWEST 1/4 OF SECTION 23  
BEARS N00°46'39"W. MONUMENTS DESCRIBED HEREON.

BASIS OF ELEVATION

BENCH MARK (H79) LOCATED IN THE NE 1/4 OF SECTION 35, T4S,  
R98W, 6th P.M., TAKEN FROM THE BULL FORK QUADRANGLE,  
COLORADO, 7.5 MINUTE SERIES. (TOPOGRAPHIC MAP)  
PUBLISHED BY THE UNITED STATES DEPARTMENT OF THE  
INTERIOR, GEOLOGICAL SURVEY. SAID ELEVATION IS MARKED  
AS BEING 8535 FEET.



CERTIFICATION

THIS IS TO CERTIFY THAT THE ABOVE PLAT WAS PREPARED AND LOCATION AS SHOWN WAS STAKED ON THE GROUND FROM FIELD NOTES OF ACTUAL SURVEYS MADE BY ME OR UNDER MY SUPERVISION AND THAT THE SAME ARE TRUE AND CORRECT TO THE BEST OF MY KNOWLEDGE AND BELIEF.

REGISTERED LAND SURVEYOR  
REGISTRATION NO. 19910  
STATE OF COLORADO

REV: 3 01-10-23 T.L.L. (SHL, TGI & BHL MOVES)

LEGEND:

- = PROPOSED WELLHEAD.
- ◆ = TOP OF GAS INTERVAL.
- = TARGET BOTTOM HOLE.
- ▲ = SECTION CORNERS LOCATED. (NAD 83)
- △ = SECTION CORNERS RE-ESTABLISHED. (Not Set on Ground.) (NAD 83)

LINE TABLE		
LINE	DIRECTION	LENGTH
L1	S69°51'03"W	100.08'

PDOP = 1.4

NAD 83 (SURFACE LOCATION)	NAD 83 (TOP OF GAS INTERVAL)	NAD 83 (TARGET BOTTOM HOLE)
LATITUDE = 39°41'03.35" (39.684264°)	LATITUDE = 39°41'17.87" (39.688297°)	LATITUDE = 39°41'17.53" (39.688203°)
LONGITUDE = 108°08'26.79" (108.140775°)	LONGITUDE = 108°08'52.13" (108.147815°)	LONGITUDE = 108°08'53.34" (108.148149°)
NAD 27 (SURFACE LOCATION)	NAD 27 (TOP OF GAS INTERVAL)	NAD 27 (TARGET BOTTOM HOLE)
LATITUDE = 39°41'03.44" (39.684288°)	LATITUDE = 39°41'17.96" (39.688322°)	LATITUDE = 39°41'17.62" (39.688228°)
LONGITUDE = 108°08'24.50" (108.140139°)	LONGITUDE = 108°08'49.84" (108.147179°)	LONGITUDE = 108°08'51.05" (108.147513°)
UTM NAD 27 (ZONE 12)	UTM NAD 27 (ZONE 12)	UTM NAD 27 (ZONE 12)
N: 14423915.61' E: 2445082.93'	N: 14425321.42' E: 2443055.21'	N: 14425284.19' E: 2442962.32'



UELS, LLC  
Corporate Office \* 85 South 200 East  
Vernal, UT 84078 \* (435) 789-1017

SURVEYED BY	DAYTON SLAUGH, B.H.	05-27-20	SCALE
DRAWN BY	T.L.L.	06-11-20	1" = 1000'

WELL LOCATION PLAT