

Project: Garfield County, CO  
Site: BJU M23A 496 Pad  
Well: BJU M23A FED 24C-22 496  
Wellbore: Wellbore #1  
Design: Design #3  
Latitude: 39.684193  
Longitude: -108.140173  
Ground Level: 8104.0  
RKB @ 8134.0usft (30')

PROJECT DETAILS: Garfield County, CO

Geodetic System: Universal Transverse Mercator (US Survey Feet)  
Datum: NAD 1927 - Western US  
Ellipsoid: Clarke 1866  
Zone: Zone 12N (114 W to 108 W)  
System Datum: Mean Sea Level

REFERENCE INFORMATION

Vertical (TVD) Reference: RKB @ 8134.0usft (30')  
Section (VS) Reference: Slot - 24C-22(0.0N, 0.0E)  
Measured Depth Reference: RKB @ 8134.0usft (30')  
Calculation Method: Minimum Curvature

SECTION DETAILS

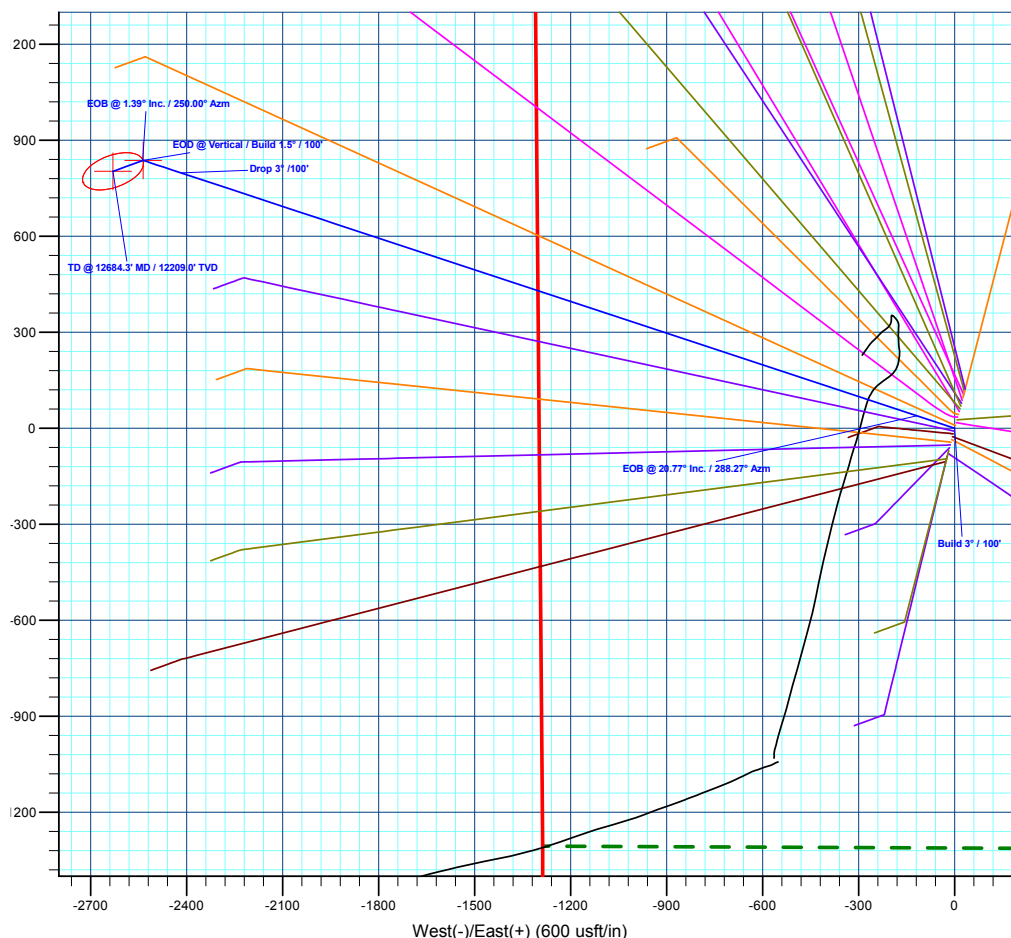
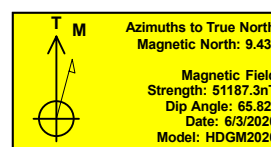
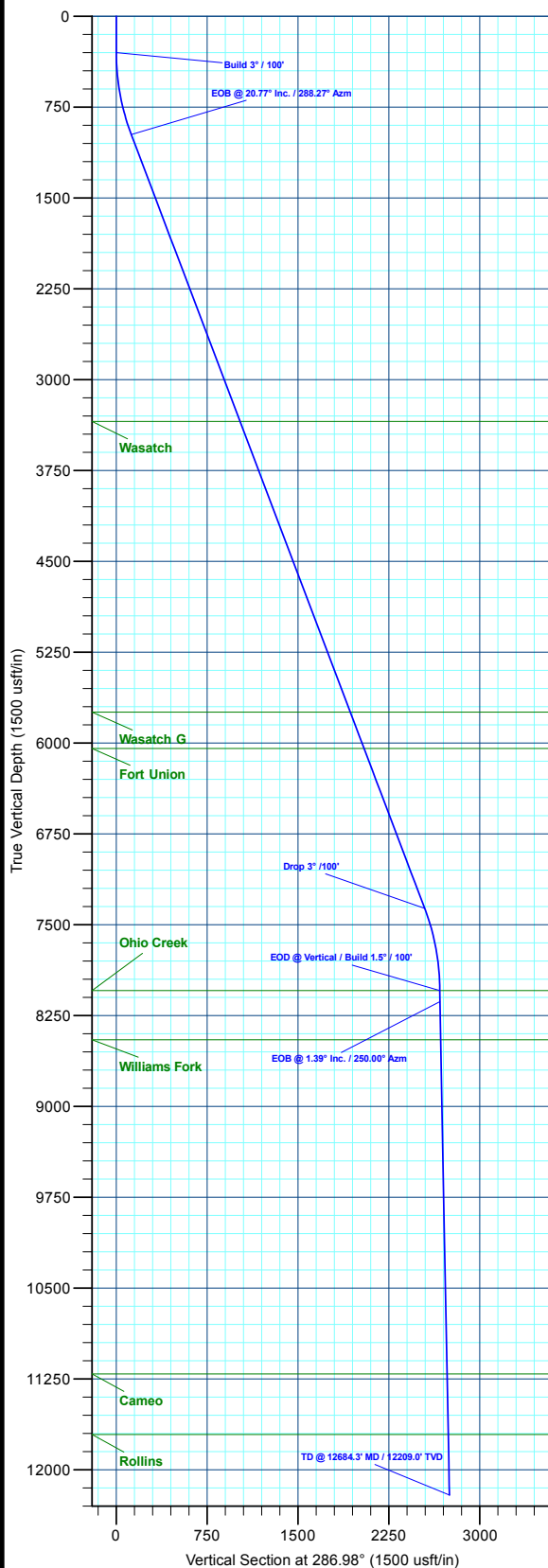
MD	Inc	Azi	TVD	+N/-S	+E/-W	Dleg	TFace	VSect	Annotation
0.0	0.00	0.00	0.0	0.0	0.0	0.00	0.00	0.0	
300.0	0.00	0.00	300.0	0.0	0.0	0.00	0.00	0.0	Build 3° / 100'
992.3	20.77	288.27	977.2	38.9	-117.8	3.00	288.27	124.1	EOB @ 20.77° Inc. / 288.27° Azm
7824.8	20.77	288.27	7365.8	798.3	-2418.4	0.00	0.00	2546.1	Drop 3° / 100'
8517.1	0.00	0.00	8043.0	837.2	-2536.3	3.00	180.00	2670.2	EOD @ Vertical / Build 1.5° / 100'
8609.8	1.39	250.00	8135.7	836.8	-2537.3	1.50	250.00	2671.1	EOB @ 1.39° Inc. / 250.00° Azm
12684.3	1.39	250.00	12209.0	803.0	-2630.2	0.00	0.00	2750.1	TD @ 12684.3' MD / 12209.0' TVD

DESIGN TARGET DETAILS

Name	TVD	+N/-S	+E/-W	Northing	Easting	Latitude	Longitude
OHCR - 24C-22	8043.0	837.2	-2536.3	14424636.48	2442512.93	39.686490	-108.149181
PBHL - 24C-22	12209.0	803.0	-2630.2	14424599.30	2442420.10	39.686396	-108.149515

WELL DETAILS: BJU M23A FED 24C-22 496

	+N/-S	+E/-W	Ground Level : 8104.0	Northing	Easting	Latitude	Longitude
	0.0	0.0		14423880.60	2445074.60	39.684193	-108.140173
							24C-22



Plan: Design #3 (BJU M23A FED 24C-22 496/Wellbore #1)

Created By: Will Jircik Date: 4:48, January 05 2023



## **Caerus Oil & Gas**

**Garfield County, CO**

**BJU M23A 496 Pad**

**BJU M23A FED 24C-22 496 - Slot 24C-22**

**Wellbore #1**

**Plan: Design #3**

## **KLX Well Planning Report**

**05 January, 2023**



<b>Database:</b>	EDM 5000.1 Single User Db	<b>Local Co-ordinate Reference:</b>	Well BJU M23A FED 24C-22 496 - Slot 24C-22
<b>Company:</b>	Caerus Oil & Gas	<b>TVD Reference:</b>	RKB @ 8134.0usft (30')
<b>Project:</b>	Garfield County, CO	<b>MD Reference:</b>	RKB @ 8134.0usft (30')
<b>Site:</b>	BJU M23A 496 Pad	<b>North Reference:</b>	True
<b>Well:</b>	BJU M23A FED 24C-22 496	<b>Survey Calculation Method:</b>	Minimum Curvature
<b>Wellbore:</b>	Wellbore #1		
<b>Design:</b>	Design #3		

<b>Project</b>	Garfield County, CO		
<b>Map System:</b>	Universal Transverse Mercator (US Survey Fee	<b>System Datum:</b>	Mean Sea Level
<b>Geo Datum:</b>	NAD 1927 - Western US		
<b>Map Zone:</b>	Zone 12N (114 W to 108 W)		

<b>Site</b>	BJU M23A 496 Pad		
<b>Site Position:</b>		<b>Northing:</b>	14,424,028.50 usft
<b>From:</b>	Map	<b>Easting:</b>	2,445,109.60 usft
<b>Position Uncertainty:</b>	0.0 usft	<b>Slot Radius:</b>	13-3/16 "
		<b>Latitude:</b>	39.684596
		<b>Longitude:</b>	-108.140032
		<b>Grid Convergence:</b>	1.83 °

<b>Well</b>	BJU M23A FED 24C-22 496 - Slot 24C-22		
<b>Well Position</b>	<b>+N/-S</b>	-146.7 usft	<b>Northing:</b> 14,423,880.60 usft
	<b>+E/-W</b>	-39.7 usft	<b>Easting:</b> 2,445,074.60 usft
<b>Position Uncertainty</b>	0.0 usft	<b>Wellhead Elevation:</b>	<b>Latitude:</b> 39.684193
			<b>Longitude:</b> -108.140173
			<b>Ground Level:</b> 8,104.0 usft

<b>Wellbore</b>	Wellbore #1				
<b>Magnetics</b>	<b>Model Name</b>	<b>Sample Date</b>	<b>Declination (°)</b>	<b>Dip Angle (°)</b>	<b>Field Strength (nT)</b>
	HDGM2020	6/3/2020	9.43	65.82	51,187.30000000

<b>Design</b>	Design #3				
<b>Audit Notes:</b>					
<b>Version:</b>	<b>Phase:</b>	PLAN	<b>Tie On Depth:</b>	0.0	
<b>Vertical Section:</b>	<b>Depth From (TVD) (usft)</b>	<b>+N/-S (usft)</b>	<b>+E/-W (usft)</b>	<b>Direction (°)</b>	
	0.0	0.0	0.0	286.98	

<b>Plan Sections</b>										
<b>Measured Depth (usft)</b>	<b>Inclination (°)</b>	<b>Azimuth (°)</b>	<b>Vertical Depth (usft)</b>	<b>+N/-S (usft)</b>	<b>+E/-W (usft)</b>	<b>Dogleg Rate (°/100usft)</b>	<b>Build Rate (°/100usft)</b>	<b>Turn Rate (°/100usft)</b>	<b>TFO (°)</b>	<b>Target</b>
0.0	0.00	0.00	0.0	0.0	0.0	0.00	0.00	0.00	0.00	
300.0	0.00	0.00	300.0	0.0	0.0	0.00	0.00	0.00	0.00	
992.3	20.77	288.27	977.2	38.9	-117.8	3.00	3.00	0.00	288.27	
7,824.8	20.77	288.27	7,365.8	798.3	-2,418.4	0.00	0.00	0.00	0.00	
8,517.1	0.00	0.00	8,043.0	837.2	-2,536.3	3.00	-3.00	0.00	180.00	OHCR - 24C-22
8,609.8	1.39	250.00	8,135.7	836.8	-2,537.3	1.50	1.50	-118.66	250.00	
12,684.3	1.39	250.00	12,209.0	803.0	-2,630.2	0.00	0.00	0.00	0.00	PBHL - 24C-22

<b>Database:</b>	EDM 5000.1 Single User Db	<b>Local Co-ordinate Reference:</b>	Well BJU M23A FED 24C-22 496 - Slot 24C-22
<b>Company:</b>	Caerus Oil & Gas	<b>TVD Reference:</b>	RKB @ 8134.0usft (30')
<b>Project:</b>	Garfield County, CO	<b>MD Reference:</b>	RKB @ 8134.0usft (30')
<b>Site:</b>	BJU M23A 496 Pad	<b>North Reference:</b>	True
<b>Well:</b>	BJU M23A FED 24C-22 496	<b>Survey Calculation Method:</b>	Minimum Curvature
<b>Wellbore:</b>	Wellbore #1		
<b>Design:</b>	Design #3		

**Planned Survey**

Measured Depth (usft)	Inclination (°)	Azimuth (°)	Vertical Depth (usft)	+N/-S (usft)	+E/-W (usft)	Vertical Section (usft)	Dogleg Rate (°/100usft)	Build Rate (°/100usft)	Turn Rate (°/100usft)
0.0	0.00	0.00	0.0	0.0	0.0	0.0	0.00	0.00	0.00
100.0	0.00	0.00	100.0	0.0	0.0	0.0	0.00	0.00	0.00
200.0	0.00	0.00	200.0	0.0	0.0	0.0	0.00	0.00	0.00
<b>Build 3° / 100'</b>									
300.0	0.00	0.00	300.0	0.0	0.0	0.0	0.00	0.00	0.00
400.0	3.00	288.27	400.0	0.8	-2.5	2.6	3.00	3.00	0.00
500.0	6.00	288.27	499.6	3.3	-9.9	10.5	3.00	3.00	0.00
600.0	9.00	288.27	598.8	7.4	-22.3	23.5	3.00	3.00	0.00
700.0	12.00	288.27	697.1	13.1	-39.6	41.7	3.00	3.00	0.00
800.0	15.00	288.27	794.3	20.4	-61.8	65.1	3.00	3.00	0.00
900.0	18.00	288.27	890.2	29.3	-88.8	93.5	3.00	3.00	0.00
<b>EOB @ 20.77° Inc. / 288.27° Azm</b>									
992.3	20.77	288.27	977.2	38.9	-117.8	124.1	3.00	3.00	0.00
1,000.0	20.77	288.27	984.4	39.8	-120.4	126.8	0.00	0.00	0.00
1,100.0	20.77	288.27	1,077.9	50.9	-154.1	162.3	0.00	0.00	0.00
1,200.0	20.77	288.27	1,171.4	62.0	-187.8	197.7	0.00	0.00	0.00
1,300.0	20.77	288.27	1,264.9	73.1	-221.5	233.2	0.00	0.00	0.00
1,400.0	20.77	288.27	1,358.4	84.2	-255.1	268.6	0.00	0.00	0.00
1,500.0	20.77	288.27	1,452.0	95.3	-288.8	304.0	0.00	0.00	0.00
1,600.0	20.77	288.27	1,545.5	106.4	-322.5	339.5	0.00	0.00	0.00
1,700.0	20.77	288.27	1,639.0	117.6	-356.1	374.9	0.00	0.00	0.00
1,800.0	20.77	288.27	1,732.5	128.7	-389.8	410.4	0.00	0.00	0.00
1,900.0	20.77	288.27	1,826.0	139.8	-423.5	445.8	0.00	0.00	0.00
2,000.0	20.77	288.27	1,919.5	150.9	-457.2	481.3	0.00	0.00	0.00
2,100.0	20.77	288.27	2,013.0	162.0	-490.8	516.7	0.00	0.00	0.00
2,200.0	20.77	288.27	2,106.5	173.1	-524.5	552.2	0.00	0.00	0.00
2,300.0	20.77	288.27	2,200.0	184.2	-558.2	587.6	0.00	0.00	0.00
2,400.0	20.77	288.27	2,293.5	195.4	-591.8	623.1	0.00	0.00	0.00
2,500.0	20.77	288.27	2,387.0	206.5	-625.5	658.5	0.00	0.00	0.00
2,600.0	20.77	288.27	2,480.5	217.6	-659.2	694.0	0.00	0.00	0.00
2,700.0	20.77	288.27	2,574.0	228.7	-692.9	729.4	0.00	0.00	0.00
2,800.0	20.77	288.27	2,667.5	239.8	-726.5	764.9	0.00	0.00	0.00
2,900.0	20.77	288.27	2,761.0	250.9	-760.2	800.3	0.00	0.00	0.00
3,000.0	20.77	288.27	2,854.5	262.0	-793.9	835.8	0.00	0.00	0.00
3,100.0	20.77	288.27	2,948.0	273.2	-827.5	871.2	0.00	0.00	0.00
3,200.0	20.77	288.27	3,041.5	284.3	-861.2	906.7	0.00	0.00	0.00
3,300.0	20.77	288.27	3,135.0	295.4	-894.9	942.1	0.00	0.00	0.00
3,400.0	20.77	288.27	3,228.5	306.5	-928.6	977.6	0.00	0.00	0.00
3,500.0	20.77	288.27	3,322.0	317.6	-962.2	1,013.0	0.00	0.00	0.00
<b>Wasatch</b>									
3,524.6	20.77	288.27	3,345.0	320.3	-970.5	1,021.7	0.00	0.00	0.00
3,600.0	20.77	288.27	3,415.5	328.7	-995.9	1,048.5	0.00	0.00	0.00
3,700.0	20.77	288.27	3,509.0	339.8	-1,029.6	1,083.9	0.00	0.00	0.00
3,800.0	20.77	288.27	3,602.5	351.0	-1,063.2	1,119.4	0.00	0.00	0.00
3,900.0	20.77	288.27	3,696.0	362.1	-1,096.9	1,154.8	0.00	0.00	0.00
4,000.0	20.77	288.27	3,789.5	373.2	-1,130.6	1,190.3	0.00	0.00	0.00
4,100.0	20.77	288.27	3,883.0	384.3	-1,164.2	1,225.7	0.00	0.00	0.00
4,200.0	20.77	288.27	3,976.5	395.4	-1,197.9	1,261.2	0.00	0.00	0.00
4,300.0	20.77	288.27	4,070.0	406.5	-1,231.6	1,296.6	0.00	0.00	0.00
4,400.0	20.77	288.27	4,163.5	417.6	-1,265.3	1,332.1	0.00	0.00	0.00
4,500.0	20.77	288.27	4,257.0	428.8	-1,298.9	1,367.5	0.00	0.00	0.00
4,600.0	20.77	288.27	4,350.5	439.9	-1,332.6	1,403.0	0.00	0.00	0.00
4,700.0	20.77	288.27	4,444.0	451.0	-1,366.3	1,438.4	0.00	0.00	0.00

<b>Database:</b>	EDM 5000.1 Single User Db	<b>Local Co-ordinate Reference:</b>	Well BJU M23A FED 24C-22 496 - Slot 24C-22
<b>Company:</b>	Caerus Oil & Gas	<b>TVD Reference:</b>	RKB @ 8134.0usft (30')
<b>Project:</b>	Garfield County, CO	<b>MD Reference:</b>	RKB @ 8134.0usft (30')
<b>Site:</b>	BJU M23A 496 Pad	<b>North Reference:</b>	True
<b>Well:</b>	BJU M23A FED 24C-22 496	<b>Survey Calculation Method:</b>	Minimum Curvature
<b>Wellbore:</b>	Wellbore #1		
<b>Design:</b>	Design #3		

**Planned Survey**

Measured Depth (usft)	Inclination (°)	Azimuth (°)	Vertical Depth (usft)	+N/-S (usft)	+E/-W (usft)	Vertical Section (usft)	Dogleg Rate (°/100usft)	Build Rate (°/100usft)	Turn Rate (°/100usft)
4,800.0	20.77	288.27	4,537.5	462.1	-1,399.9	1,473.9	0.00	0.00	0.00
4,900.0	20.77	288.27	4,631.0	473.2	-1,433.6	1,509.3	0.00	0.00	0.00
5,000.0	20.77	288.27	4,724.5	484.3	-1,467.3	1,544.8	0.00	0.00	0.00
5,100.0	20.77	288.27	4,818.0	495.4	-1,501.0	1,580.2	0.00	0.00	0.00
5,200.0	20.77	288.27	4,911.5	506.6	-1,534.6	1,615.7	0.00	0.00	0.00
5,300.0	20.77	288.27	5,005.0	517.7	-1,568.3	1,651.1	0.00	0.00	0.00
5,400.0	20.77	288.27	5,098.6	528.8	-1,602.0	1,686.6	0.00	0.00	0.00
5,500.0	20.77	288.27	5,192.1	539.9	-1,635.6	1,722.0	0.00	0.00	0.00
5,600.0	20.77	288.27	5,285.6	551.0	-1,669.3	1,757.5	0.00	0.00	0.00
5,700.0	20.77	288.27	5,379.1	562.1	-1,703.0	1,792.9	0.00	0.00	0.00
5,800.0	20.77	288.27	5,472.6	573.2	-1,736.7	1,828.4	0.00	0.00	0.00
5,900.0	20.77	288.27	5,566.1	584.4	-1,770.3	1,863.8	0.00	0.00	0.00
6,000.0	20.77	288.27	5,659.6	595.5	-1,804.0	1,899.3	0.00	0.00	0.00
<b>Wasatch G</b>									
6,091.4	20.77	288.27	5,745.0	605.6	-1,834.8	1,931.6	0.00	0.00	0.00
6,100.0	20.77	288.27	5,753.1	606.6	-1,837.7	1,934.7	0.00	0.00	0.00
6,200.0	20.77	288.27	5,846.6	617.7	-1,871.3	1,970.2	0.00	0.00	0.00
6,300.0	20.77	288.27	5,940.1	628.8	-1,905.0	2,005.6	0.00	0.00	0.00
6,400.0	20.77	288.27	6,033.6	639.9	-1,938.7	2,041.0	0.00	0.00	0.00
<b>Fort Union</b>									
6,412.2	20.77	288.27	6,045.0	641.3	-1,942.8	2,045.4	0.00	0.00	0.00
6,500.0	20.77	288.27	6,127.1	651.0	-1,972.4	2,076.5	0.00	0.00	0.00
6,600.0	20.77	288.27	6,220.6	662.2	-2,006.0	2,111.9	0.00	0.00	0.00
6,700.0	20.77	288.27	6,314.1	673.3	-2,039.7	2,147.4	0.00	0.00	0.00
6,800.0	20.77	288.27	6,407.6	684.4	-2,073.4	2,182.8	0.00	0.00	0.00
6,900.0	20.77	288.27	6,501.1	695.5	-2,107.0	2,218.3	0.00	0.00	0.00
7,000.0	20.77	288.27	6,594.6	706.6	-2,140.7	2,253.7	0.00	0.00	0.00
7,100.0	20.77	288.27	6,688.1	717.7	-2,174.4	2,289.2	0.00	0.00	0.00
7,200.0	20.77	288.27	6,781.6	728.8	-2,208.1	2,324.6	0.00	0.00	0.00
7,300.0	20.77	288.27	6,875.1	740.0	-2,241.7	2,360.1	0.00	0.00	0.00
7,400.0	20.77	288.27	6,968.6	751.1	-2,275.4	2,395.5	0.00	0.00	0.00
7,500.0	20.77	288.27	7,062.1	762.2	-2,309.1	2,431.0	0.00	0.00	0.00
7,600.0	20.77	288.27	7,155.6	773.3	-2,342.7	2,466.4	0.00	0.00	0.00
7,700.0	20.77	288.27	7,249.1	784.4	-2,376.4	2,501.9	0.00	0.00	0.00
7,800.0	20.77	288.27	7,342.6	795.5	-2,410.1	2,537.3	0.00	0.00	0.00
<b>Drop 3° /100'</b>									
7,824.8	20.77	288.27	7,365.8	798.3	-2,418.4	2,546.1	0.00	0.00	0.00
7,900.0	18.51	288.27	7,436.6	806.2	-2,442.4	2,571.4	3.00	-3.00	0.00
8,000.0	15.51	288.27	7,532.2	815.4	-2,470.2	2,600.6	3.00	-3.00	0.00
8,100.0	12.51	288.27	7,629.3	823.0	-2,493.2	2,624.8	3.00	-3.00	0.00
8,200.0	9.51	288.27	7,727.4	828.9	-2,511.3	2,643.9	3.00	-3.00	0.00
8,300.0	6.51	288.27	7,826.4	833.3	-2,524.6	2,657.9	3.00	-3.00	0.00
8,400.0	3.51	288.27	7,926.0	836.1	-2,532.9	2,666.6	3.00	-3.00	0.00
8,500.0	0.51	288.27	8,025.9	837.2	-2,536.2	2,670.1	3.00	-3.00	0.00
<b>EOD @ Vertical / Build 1.5° / 100' - Ohio Creek</b>									
8,517.1	0.00	0.00	8,043.0	837.2	-2,536.3	2,670.2	3.00	-3.00	0.00
<b>EOB @ 1.39° Inc. / 250.00° Azm</b>									
8,609.8	1.39	250.00	8,135.7	836.8	-2,537.3	2,671.1	1.50	1.50	0.00
8,700.0	1.39	250.00	8,225.9	836.0	-2,539.4	2,672.8	0.00	0.00	0.00
8,800.0	1.39	250.00	8,325.9	835.2	-2,541.7	2,674.8	0.00	0.00	0.00
8,900.0	1.39	250.00	8,425.8	834.4	-2,543.9	2,676.7	0.00	0.00	0.00
<b>Williams Fork</b>									

<b>Database:</b>	EDM 5000.1 Single User Db	<b>Local Co-ordinate Reference:</b>	Well BJU M23A FED 24C-22 496 - Slot 24C-22
<b>Company:</b>	Caerus Oil & Gas	<b>TVD Reference:</b>	RKB @ 8134.0usft (30')
<b>Project:</b>	Garfield County, CO	<b>MD Reference:</b>	RKB @ 8134.0usft (30')
<b>Site:</b>	BJU M23A 496 Pad	<b>North Reference:</b>	True
<b>Well:</b>	BJU M23A FED 24C-22 496	<b>Survey Calculation Method:</b>	Minimum Curvature
<b>Wellbore:</b>	Wellbore #1		
<b>Design:</b>	Design #3		

Planned Survey									
Measured Depth (usft)	Inclination (°)	Azimuth (°)	Vertical Depth (usft)	+N/-S (usft)	+E/-W (usft)	Vertical Section (usft)	Dogleg Rate (°/100usft)	Build Rate (°/100usft)	Turn Rate (°/100usft)
8,924.2	1.39	250.00	8,450.0	834.2	-2,544.5	2,677.2	0.00	0.00	0.00
9,000.0	1.39	250.00	8,525.8	833.6	-2,546.2	2,678.6	0.00	0.00	0.00
9,100.0	1.39	250.00	8,625.8	832.7	-2,548.5	2,680.6	0.00	0.00	0.00
9,200.0	1.39	250.00	8,725.8	831.9	-2,550.8	2,682.5	0.00	0.00	0.00
9,300.0	1.39	250.00	8,825.7	831.1	-2,553.1	2,684.5	0.00	0.00	0.00
9,400.0	1.39	250.00	8,925.7	830.2	-2,555.3	2,686.4	0.00	0.00	0.00
9,500.0	1.39	250.00	9,025.7	829.4	-2,557.6	2,688.3	0.00	0.00	0.00
9,600.0	1.39	250.00	9,125.6	828.6	-2,559.9	2,690.3	0.00	0.00	0.00
9,700.0	1.39	250.00	9,225.6	827.7	-2,562.2	2,692.2	0.00	0.00	0.00
9,800.0	1.39	250.00	9,325.6	826.9	-2,564.5	2,694.2	0.00	0.00	0.00
9,900.0	1.39	250.00	9,425.6	826.1	-2,566.7	2,696.1	0.00	0.00	0.00
10,000.0	1.39	250.00	9,525.5	825.3	-2,569.0	2,698.0	0.00	0.00	0.00
10,100.0	1.39	250.00	9,625.5	824.4	-2,571.3	2,700.0	0.00	0.00	0.00
10,200.0	1.39	250.00	9,725.5	823.6	-2,573.6	2,701.9	0.00	0.00	0.00
10,300.0	1.39	250.00	9,825.4	822.8	-2,575.9	2,703.9	0.00	0.00	0.00
10,400.0	1.39	250.00	9,925.4	821.9	-2,578.1	2,705.8	0.00	0.00	0.00
10,500.0	1.39	250.00	10,025.4	821.1	-2,580.4	2,707.7	0.00	0.00	0.00
10,600.0	1.39	250.00	10,125.3	820.3	-2,582.7	2,709.7	0.00	0.00	0.00
10,700.0	1.39	250.00	10,225.3	819.4	-2,585.0	2,711.6	0.00	0.00	0.00
10,800.0	1.39	250.00	10,325.3	818.6	-2,587.3	2,713.5	0.00	0.00	0.00
10,900.0	1.39	250.00	10,425.3	817.8	-2,589.5	2,715.5	0.00	0.00	0.00
11,000.0	1.39	250.00	10,525.2	817.0	-2,591.8	2,717.4	0.00	0.00	0.00
11,100.0	1.39	250.00	10,625.2	816.1	-2,594.1	2,719.4	0.00	0.00	0.00
11,200.0	1.39	250.00	10,725.2	815.3	-2,596.4	2,721.3	0.00	0.00	0.00
11,300.0	1.39	250.00	10,825.1	814.5	-2,598.7	2,723.2	0.00	0.00	0.00
11,400.0	1.39	250.00	10,925.1	813.6	-2,600.9	2,725.2	0.00	0.00	0.00
11,500.0	1.39	250.00	11,025.1	812.8	-2,603.2	2,727.1	0.00	0.00	0.00
11,600.0	1.39	250.00	11,125.1	812.0	-2,605.5	2,729.1	0.00	0.00	0.00
<b>Cameo</b>									
11,684.0	1.39	250.00	11,209.0	811.3	-2,607.4	2,730.7	0.00	0.00	0.00
11,700.0	1.39	250.00	11,225.0	811.1	-2,607.8	2,731.0	0.00	0.00	0.00
11,800.0	1.39	250.00	11,325.0	810.3	-2,610.1	2,732.9	0.00	0.00	0.00
11,900.0	1.39	250.00	11,425.0	809.5	-2,612.4	2,734.9	0.00	0.00	0.00
12,000.0	1.39	250.00	11,524.9	808.7	-2,614.6	2,736.8	0.00	0.00	0.00
12,100.0	1.39	250.00	11,624.9	807.8	-2,616.9	2,738.7	0.00	0.00	0.00
<b>Rollins</b>									
12,184.1	1.39	250.00	11,709.0	807.1	-2,618.8	2,740.4	0.00	0.00	0.00
12,200.0	1.39	250.00	11,724.9	807.0	-2,619.2	2,740.7	0.00	0.00	0.00
12,300.0	1.39	250.00	11,824.8	806.2	-2,621.5	2,742.6	0.00	0.00	0.00
12,400.0	1.39	250.00	11,924.8	805.3	-2,623.8	2,744.6	0.00	0.00	0.00
12,500.0	1.39	250.00	12,024.8	804.5	-2,626.0	2,746.5	0.00	0.00	0.00
12,600.0	1.39	250.00	12,124.8	803.7	-2,628.3	2,748.4	0.00	0.00	0.00
<b>TD @ 12684.3' MD / 12209.0' TVD</b>									
12,684.3	1.39	250.00	12,209.0	803.0	-2,630.2	2,750.1	0.00	0.00	0.00

<b>Database:</b>	EDM 5000.1 Single User Db	<b>Local Co-ordinate Reference:</b>	Well BJU M23A FED 24C-22 496 - Slot 24C-22
<b>Company:</b>	Caerus Oil & Gas	<b>TVD Reference:</b>	RKB @ 8134.0usft (30')
<b>Project:</b>	Garfield County, CO	<b>MD Reference:</b>	RKB @ 8134.0usft (30')
<b>Site:</b>	BJU M23A 496 Pad	<b>North Reference:</b>	True
<b>Well:</b>	BJU M23A FED 24C-22 496	<b>Survey Calculation Method:</b>	Minimum Curvature
<b>Wellbore:</b>	Wellbore #1		
<b>Design:</b>	Design #3		

#### Design Targets

Target Name - hit/miss target - Shape	Dip Angle (°)	Dip Dir. (°)	TVD (usft)	+N/-S (usft)	+E/-W (usft)	Northing (usft)	Easting (usft)	Latitude	Longitude
OHCR - 24C-22 - plan hits target center - Point	0.00	0.00	8,043.0	837.2	-2,536.3	14,424,636.48	2,442,512.93	39.686490	-108.149182
PBHL - 24C-22 - plan hits target center - Ellipse (radii L100.0 W50.0 on 250.00 azi)	0.00	0.00	12,209.0	803.0	-2,630.2	14,424,599.30	2,442,420.10	39.686396	-108.149515

#### Formations

Measured Depth (usft)	Vertical Depth (usft)	Name	Lithology	Dip (°)	Dip Direction (°)
3,524.6	3,345.0	Wasatch			
6,091.4	5,745.0	Wasatch G			
6,412.2	6,045.0	Fort Union			
8,517.1	8,043.0	Ohio Creek			
8,924.2	8,450.0	Williams Fork			
11,684.0	11,209.0	Cameo			
12,184.1	11,709.0	Rollins			

#### Plan Annotations

Measured Depth (usft)	Vertical Depth (usft)	Local Coordinates		Comment
		+N/-S (usft)	+E/-W (usft)	
300.0	300.0	0.0	0.0	Build 3° / 100'
992.3	977.2	38.9	-117.8	EOB @ 20.77° Inc. / 288.27° Azm
7,824.8	7,365.8	798.3	-2,418.4	Drop 3° / 100'
8,517.1	8,043.0	837.2	-2,536.3	EOD @ Vertical / Build 1.5° / 100'
8,609.8	8,135.7	836.8	-2,537.3	EOB @ 1.39° Inc. / 250.00° Azm
12,684.3	12,209.0	803.0	-2,630.2	TD @ 12684.3' MD / 12209.0' TVD