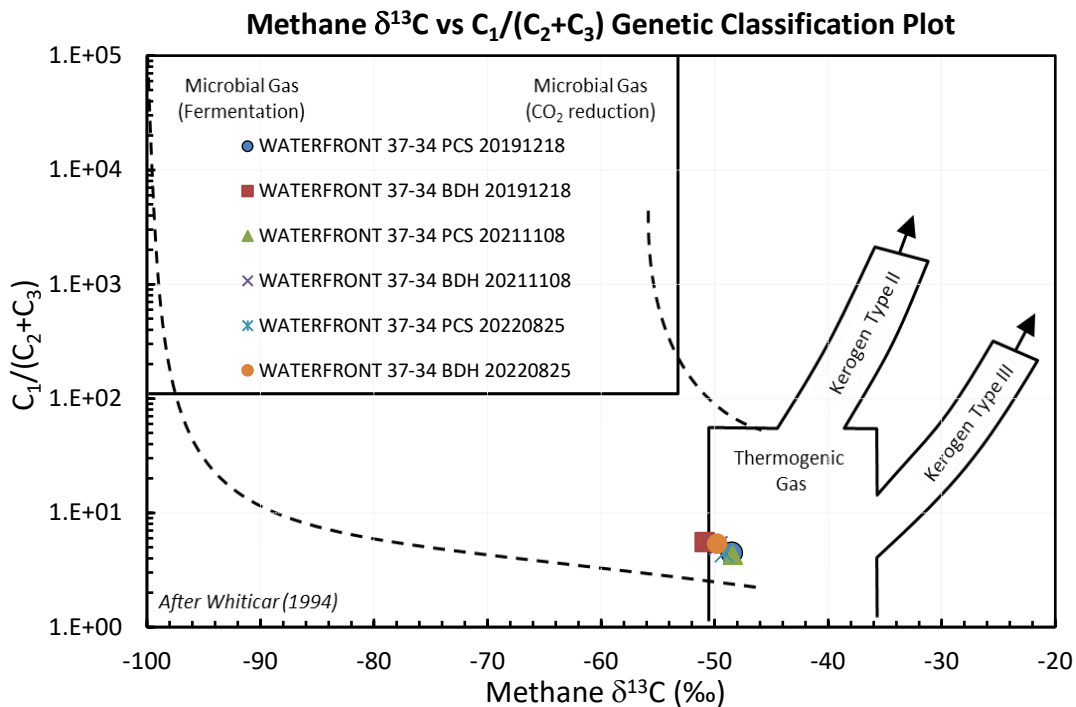
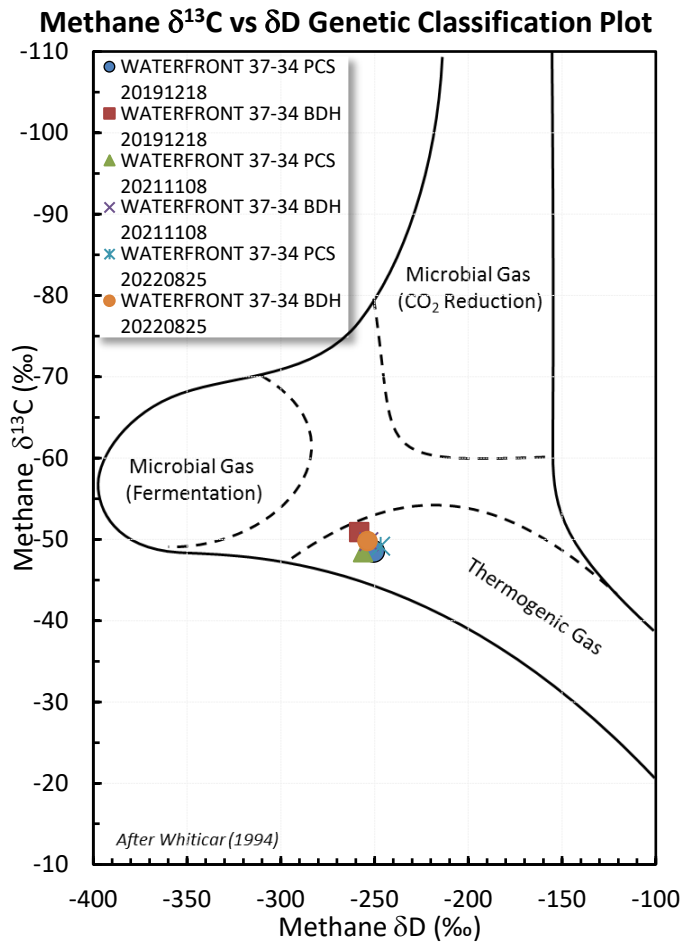
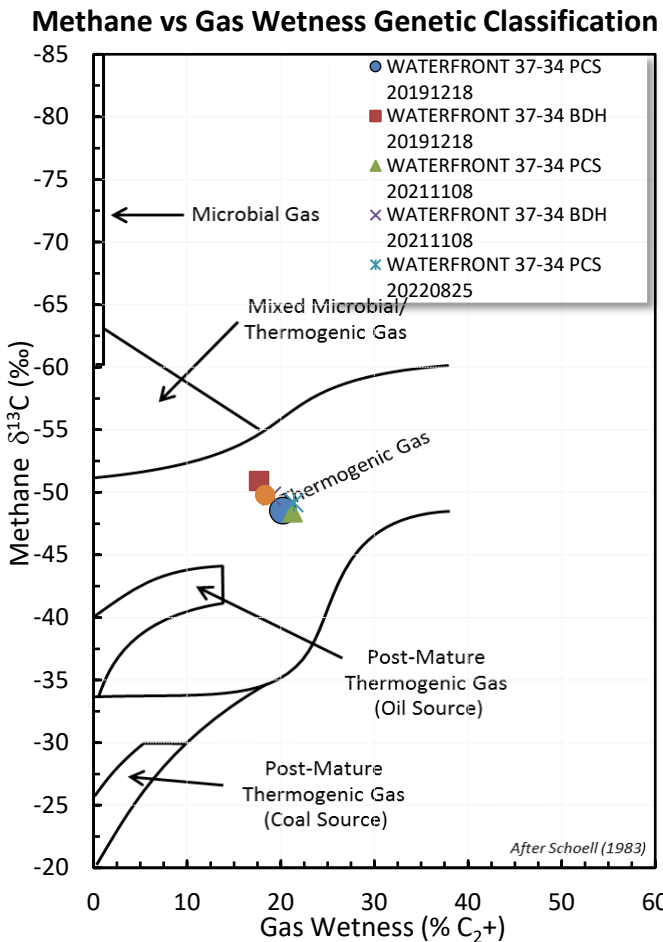
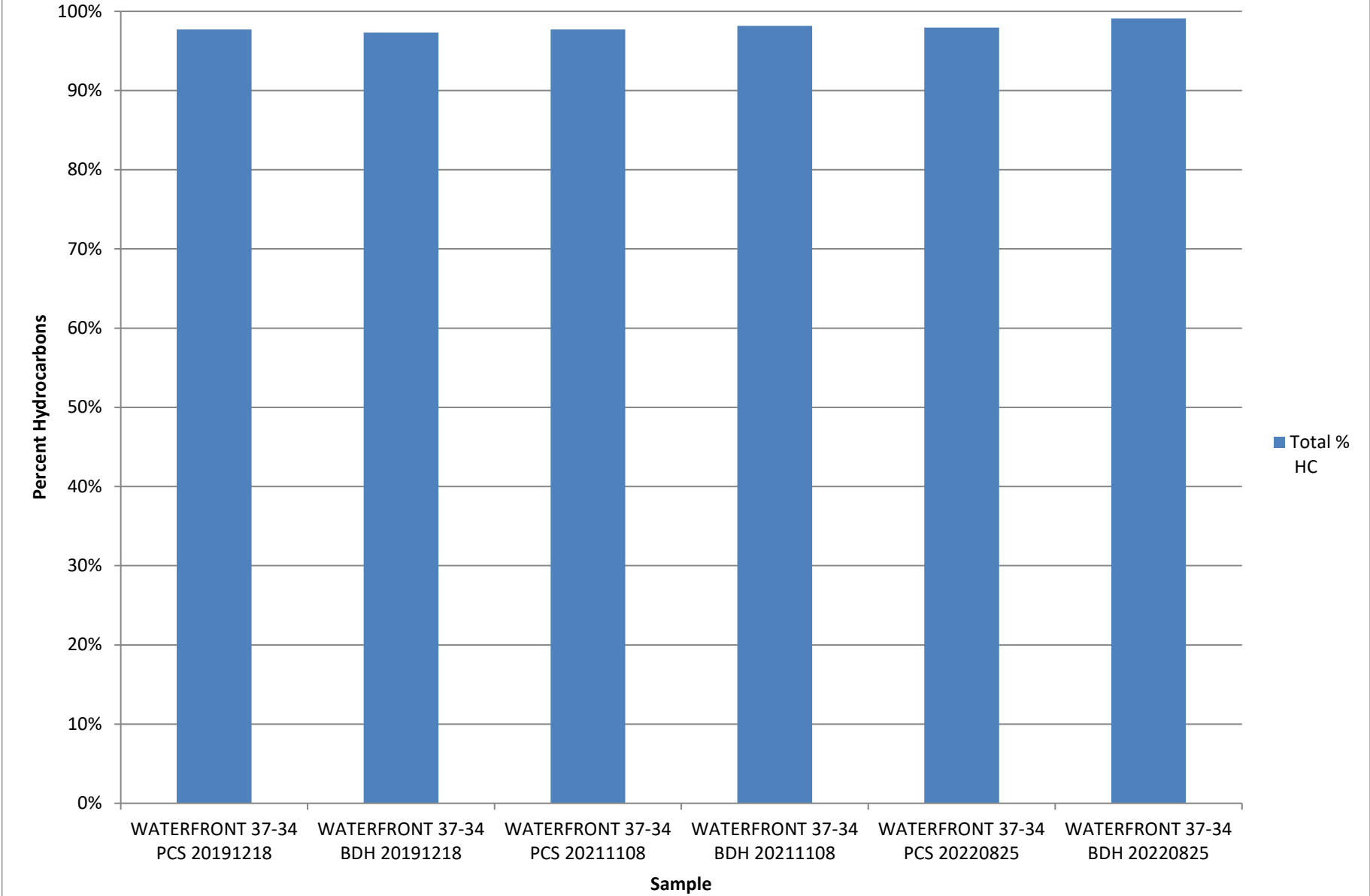


Stable Isotope Interpretive Plots



Total Percent Hydrocarbons



GAS COMPOSITION

GAS COMPOSITION (MOL %)

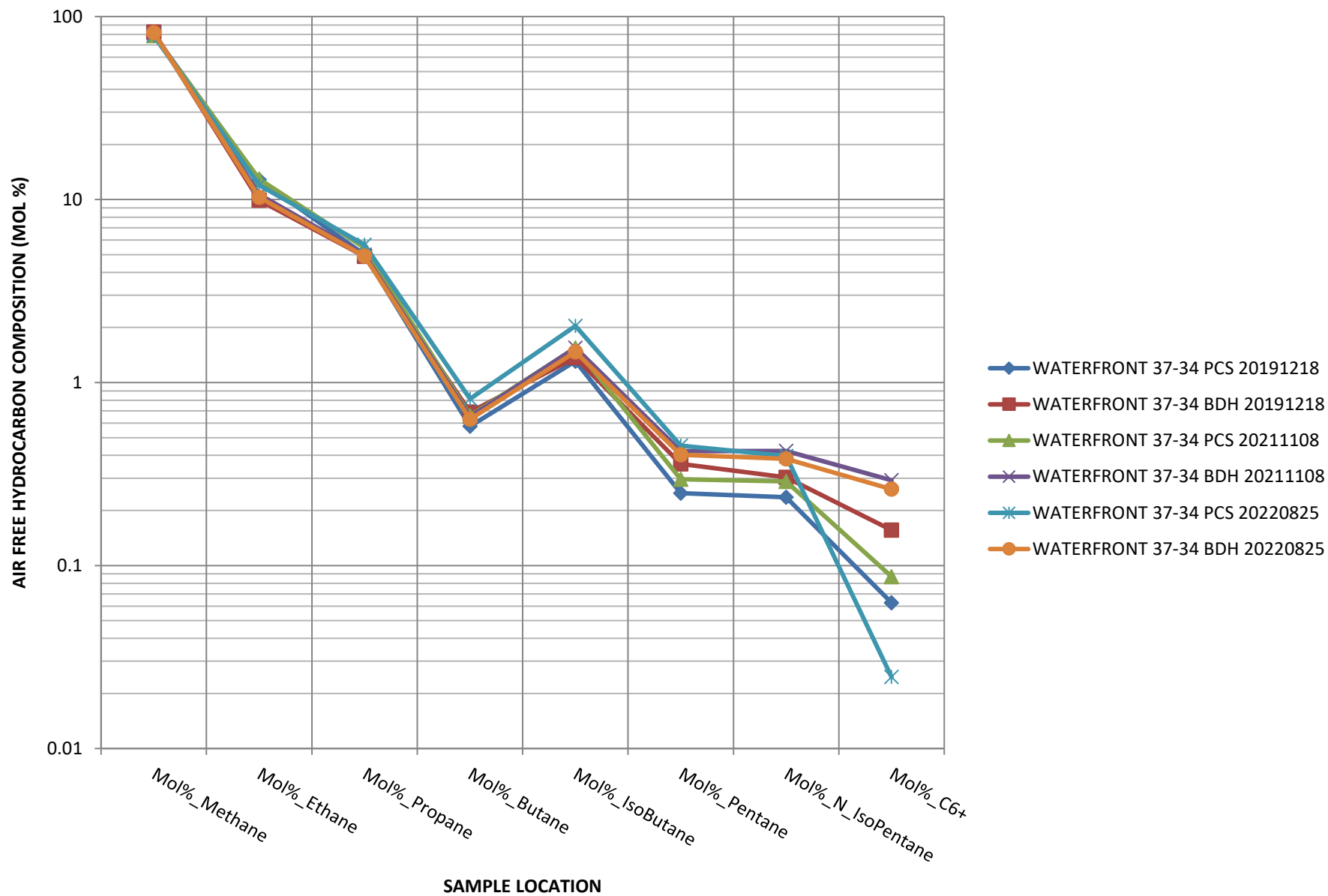
Parameter

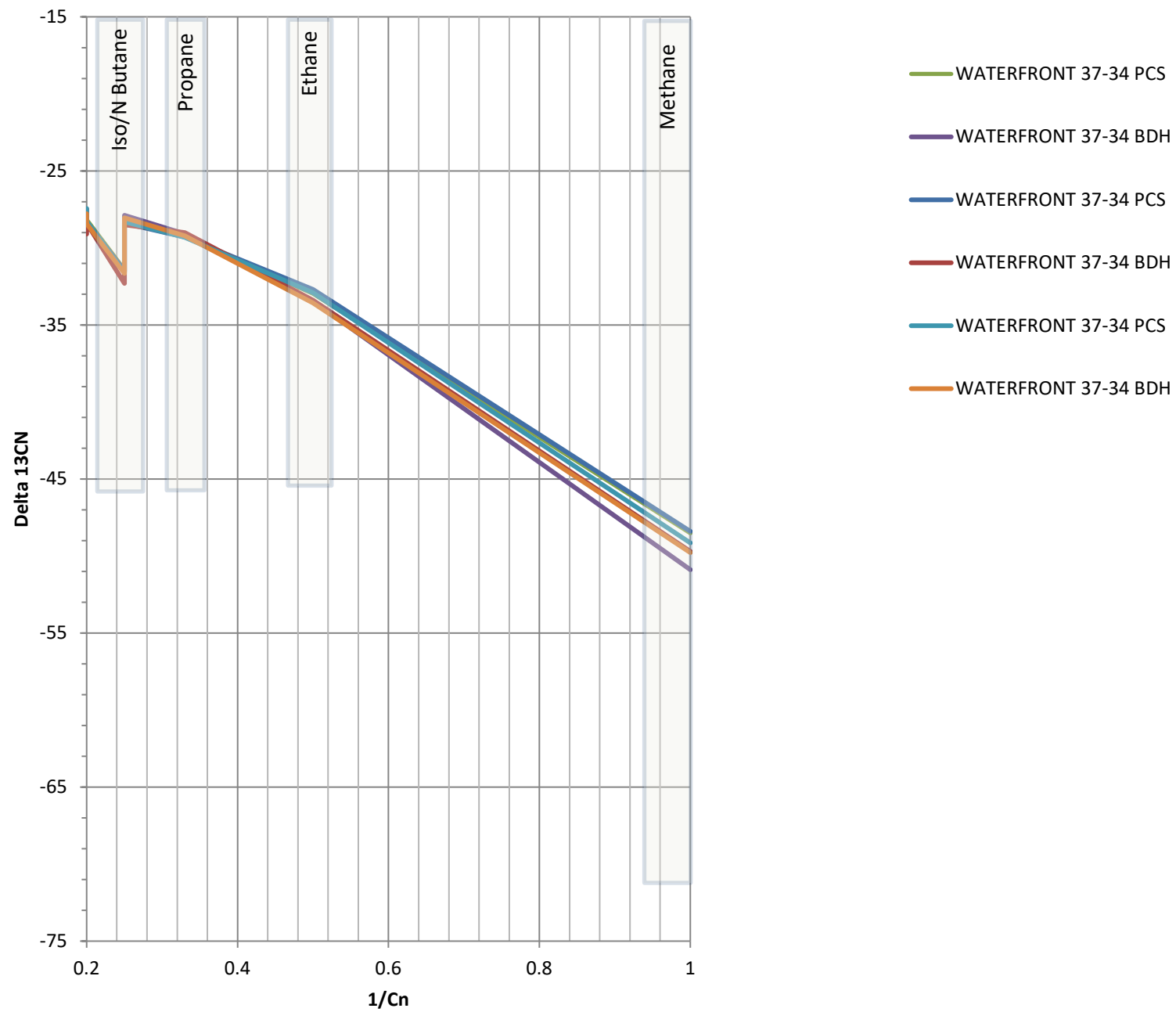
WATERFRONT 37-34 PCS 20191218
 WATERFRONT 37-34 BDH 20191218
 WATERFRONT 37-34 PCS 20211108
 WATERFRONT 37-34 BDH 20211108
 WATERFRONT 37-34 PCS 20220825
 WATERFRONT 37-34 BDH 20220825

| Parameter | WATERFRONT 37-34 PCS 20191218 | WATERFRONT 37-34 BDH 20191218 | WATERFRONT 37-34 PCS 20211108 | WATERFRONT 37-34 BDH 20211108 | WATERFRONT 37-34 PCS 20220825 | WATERFRONT 37-34 BDH 20220825 |
|---------------------|-------------------------------|-------------------------------|-------------------------------|-------------------------------|-------------------------------|-------------------------------|
| Mol%_Nitrogen | 0.5 | 2.5 | 0.7 | 1.5 | 0.5 | 0.8 |
| Mol%_Oxygen | 0.025 | 0.05 | 0.015 | 0.01 | 0.02 | 0.03 |
| Mol%_Argon | 0.001 | 0.001 | 0.001 | 0.001 | 0.001 | 0.001 |
| Mol%_O2+AR | 1.5 | 1.5 | 1.3 | 1.5 | 1.3 | 1.5 |
| Mol%_CarbonDiOxide | 0.012 | 0.025 | 0.015 | 0.01 | 0.015 | 0.02 |
| Mol%_CarbonMonoxide | 0.025 | 0.025 | 0.08 | 0.02 | 0.02 | 0.02 |
| Mol%_hydrogen | 75 | 75 | 75 | 75 | 75 | 75 |
| Mol%_Methane | 12 | 10 | 12 | 10 | 11 | 10 |
| Mol%_Ethane | 5 | 5 | 5 | 5 | 5 | 5 |
| Mol%_Propane | 0.6 | 0.7 | 0.6 | 0.6 | 0.8 | 0.6 |
| Mol%_Butane | 1.2 | 1.2 | 1.3 | 1.2 | 1.8 | 1.3 |
| Mol%_IsoButane | 0.25 | 0.4 | 0.3 | 0.4 | 0.45 | 0.4 |
| Mol%_N_Pentane | 0.22 | 0.3 | 0.25 | 0.45 | 0.4 | 0.4 |
| Mol%_IsoPentane | 0.06 | 0.15 | 0.08 | 0.3 | 0.025 | 0.25 |
| Mol%_C6+ | 0.025 | 0.025 | 0.025 | 0.025 | 0.025 | 0.025 |

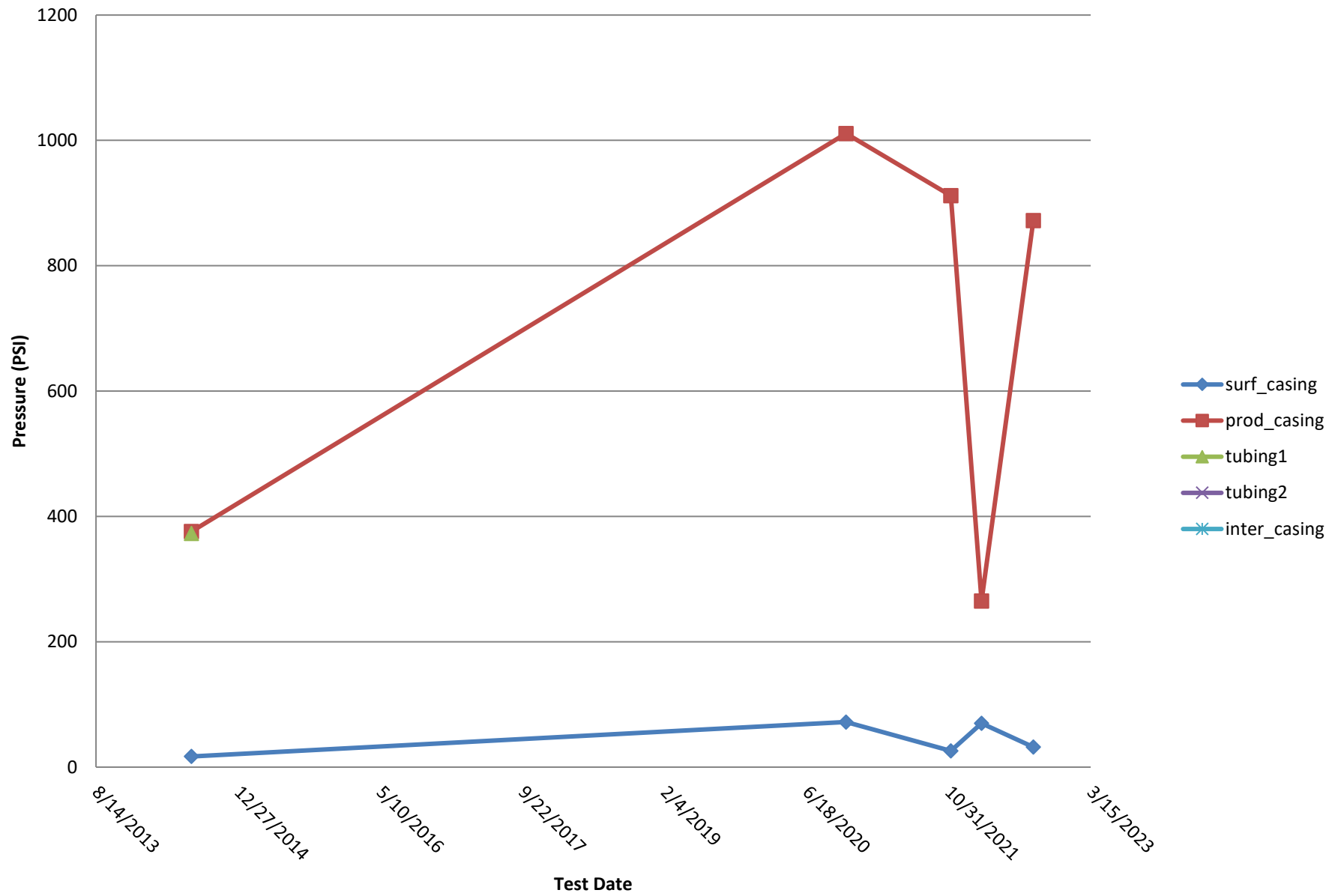
- WATERFRONT 37-34 PCS
20191218
- WATERFRONT 37-34 BDH
20191218
- WATERFRONT 37-34 PCS
20211108
- WATERFRONT 37-34 BDH
20211108
- WATERFRONT 37-34 PCS
20220825

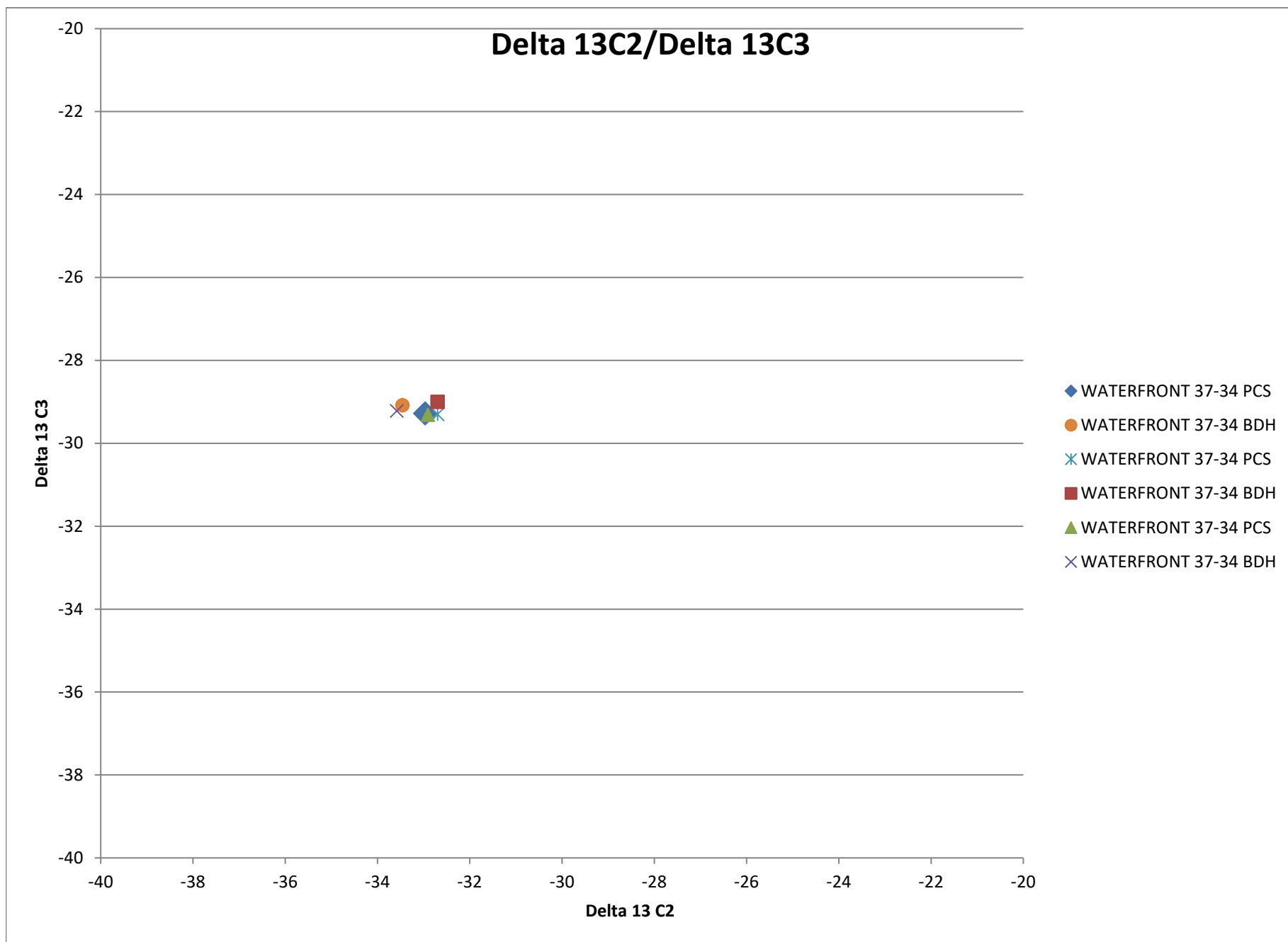
HYDROCARBON COMPOSITION



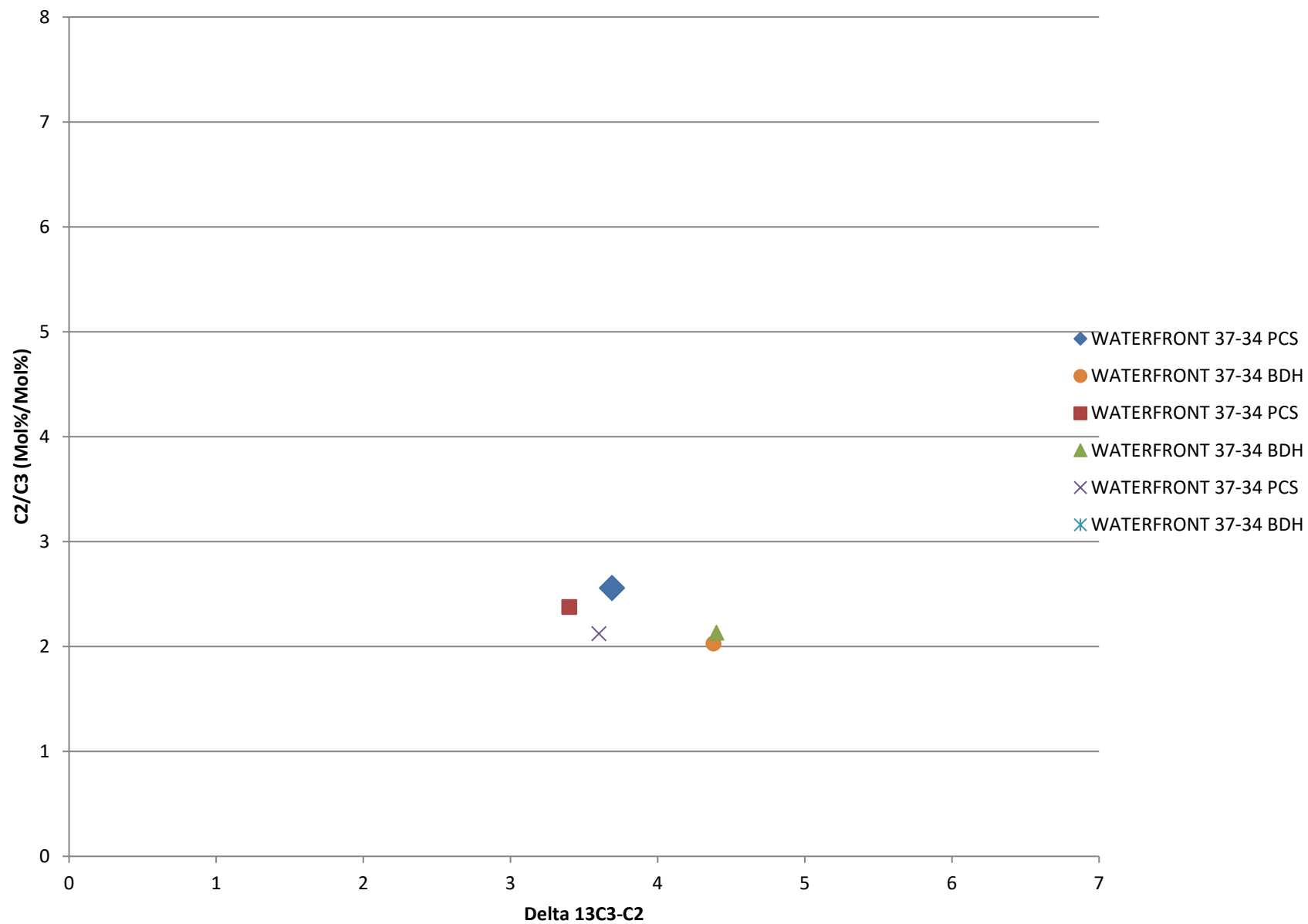


Bradenhead Test Summary





Delta13 C2/C3 vs. Delta 13C3-C2



Delta 13 IC4/ Delta NC4

