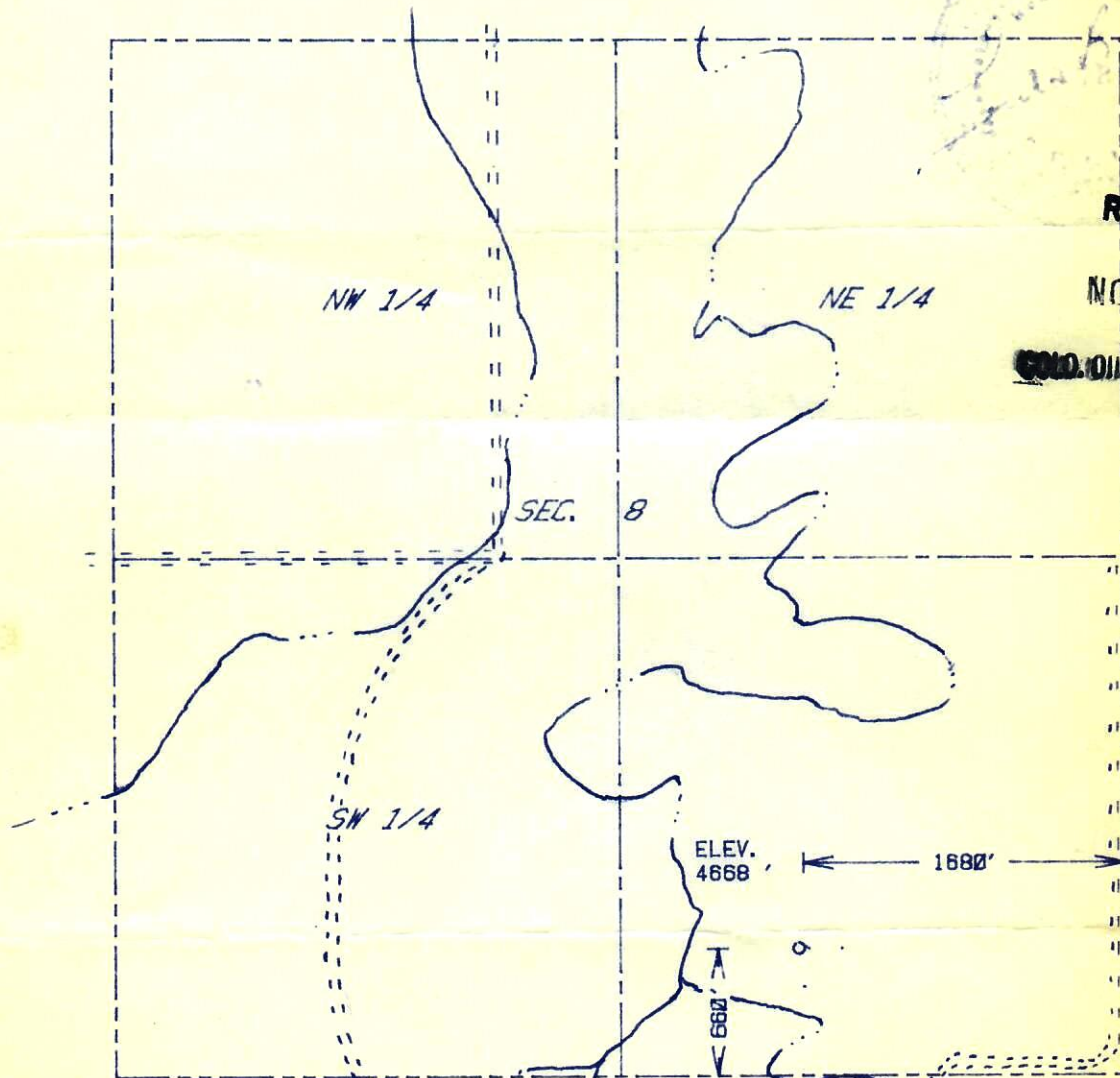




00229540

The accompanying plat is an accurate representation showing the location of a proposed well. This location may be described as a point 660 feet north of the south line, and 1680 feet west of the east line of Section 8, Township 3 S Range 55 W of the 6th P.M., WASHINGTON County, COLORADO. The surface elevation at this point is 4668 feet m.s.l.



1 mi. SW. to
Hwy 71
then 3.6
mi. S. to
Last Chance

Co. Rd 15.5

SCALE - 1"=1000'

SURVEYED POINT
REFERENCE STAKE (200 'S, 200 'E)
SE 1/4 SEC. 8 , T 3 S , R 55 W

HARMON
ENGINEERING
SERVICES

#1-8 JOLLY

TRANSCONTINENT OIL

WASHINGTON CO., COLORADO

8 OCTOBER 1985

5227-105

70/43