

Wellhead Closure Checklist

COGCC Rule 911.a.(4) Environmental Site Closure Assessment Field Form

Additional attachments (optional):		Pit Closure		Tank Battery Closure 2-22-22	Flowline Closure 2-23-22	Partially Buried Vault Closure 2-22-22
Site Name & COGCC Facility Number: Fuego C #1-19		Date: 1-18-22				Remediation Project #: 20100
Associated Wells: 05-123-23166		Age of Site: years				Number of Photos Attached: 1
Location: (GPS coordinates of wellhead or southeastern most wellhead for multiple) 40.345490 -104.503600					Estimated Facility Size (acres):	
General Condition of Site: (General observations regarding housekeeping, corrosion, waste management, etc.) <div style="text-align: center; font-size: 1.2em;">Good Condition</div>						
USCS Soil Type: CL			Estimated Depth to Groundwater: ~10-15'			
Hydrocarbon Impacted Soils / Spills: (Note estimated size and if impact appears to be surficial or extends to an unknown depth) <div style="text-align: center; font-size: 1.2em;">None observed</div>						
Salt Crusted Soils or Impacted Vegetation: (Note estimated size and if impact appears to be surficial or extends to an unknown depth) <div style="text-align: center; font-size: 1.2em;">None observed</div>						
Wellhead(s)						
Well API	05-123-23166					
Age	years					
Condition of surface around wellhead	Good - Per Crew					
PID Readings	NIA - Excavated upon arrival					
Condition of subsurface (excluding adjacent)	Good - no staining/no odor					
PID Readings	2.6	3.8	2.2	4.8	6.1	
Sample taken? Location/Sample ID#	WH-SS-01@4.5'	WH-SS-02@4.5'	WH-SS-03@4.5'	WH-SS-04@4.5'	WH-FS-01@5'	
Photo Number(s)	See photolog					
Other observations regarding wellheads: <div style="text-align: center; font-size: 1.2em;">Riser cut/capped following assessment</div>						
Summary						
Was impacted soil identified? <div style="display: flex; justify-content: space-between;"> (No) Yes - less than 10 cubic yards Yes - more than 10 cubic yards </div>						
Total number of samples field screened: 5			Total number of samples collected: 5			
Highest PID Reading: 6.1			Total number of samples submitted to lab for analysis: 1			
If more than 10 cubic yards of impacted soil were observed:						
Vertical extent:			Estimated spill volume:			
Lateral extent:			Volume of soil removed:			
Is additional investigation required?						
Was groundwater encountered during the investigation? <div style="display: flex; justify-content: space-between;"> (No) Yes - not impacted or in contact with impacted soils Yes - groundwater impacted and/or in contact with impacted soils </div>						
Measured depth to groundwater:			Was remedial groundwater removal conducted? Yes No			
Date Groundwater was encountered:			Commencement date of removal:			
Shoen on groundwater? Yes No			Volume of groundwater removed prior to sampling:			
Free product observed? Yes No			Volume of groundwater removed post sampling:			
Total number of samples collected:			Total Volume of groundwater removed:			
Total number of samples submitted to lab for analysis:						

Flowline Closure Checklist

COGCC Rule 911.a.(4) Environmental Site Closure Assessment Field Form

Additional Attachments:	Tank Battery Closure 2-22-22	Wellhead Closure 1-18-22	Pit Closure —	Partially Buried Vault Closure 2-22-22
Site Name & COGCC Facility Number: Fugo C #1-19	Date: 2-23-22	Remediation Project #: 20100		
Associated Wells: 05-123-23166	Age of Site: years	Number of Photos Attached: 4		
Starting point: (GPS coordinates and descriptions) At well: 40.345490 / -104.503600				
End point: (GPS coordinates and descriptions) At sep: 40.344989 / -104.505721				
USCS Soil Type: CL	Estimated Depth to Groundwater: ~10-15'			
Hydrocarbon Impacted Soils / Spills: (Note estimated size and if impact appears to be surficial or extends to an unknown depth) Slight staining / odor at terminus (TB-SS-02 - Rem. #20094)				
Salt Crusted Soils or Impacted Vegetation: (Note estimated size and if impact appears to be surficial or extends to an unknown depth) None observed				
Flowlines				
Flowline type	D, G, W			
Depth	~3'			
Age	years			
Length	~710'			
Construction Material	Steel			
Were flowlines pulled?	Partially - a portion	was abandoned in place due to field constraints		
Visual Integrity of lines	Good			
Visual impacts if trenched	None			
PID Readings if trenched	73.2	2.6	3.1	10.1
Sample taken? Location/Sample ID#	TB-SS-02 @ 3'	FL-SS-01 @ 3'	FL-SS-02 @ 3'	FL-SS-03 @ 3'
Photo Number(s)	See photolog			
Other observations regarding on location flowlines: Terminus @ Pl. 8 collected during facility decom. (TB-SS-02) associated with Remediation # 20094 Change of direction (FL-SS-03) assessed + lab analyzed, additional cut points (FL-SS-01 + FL-SS-02) assessed				
Summary				
Was impacted soil identified? No Yes - less than 10 cubic yards Yes - more than 10 cubic yards				
Total number of samples field screened: 4		Total number of samples collected:		
Highest PID Reading: 73.2		Total number of samples submitted to lab for analysis:		
If more than 10 cubic yards of impacted soil were observed:				
Vertical extent:	N/A		Estimated spill volume:	
Lateral extent:	N/A		Volume of soil removed:	
Is additional investigation required?				
Was groundwater encountered during the investigation? (No) Yes - not impacted or in contact with impacted soils Yes - groundwater impacted and/or in contact with impacted soils				
Measured depth to groundwater:		Was remedial groundwater removal conducted? Yes No		
Date Groundwater was encountered:		Commencement date of removal:		
Sheen on groundwater? Yes No		Volume of groundwater removed prior to sampling:		
Free product observed? Yes No		Volume of groundwater removed post sampling:		
Total number of samples collected:		Total Volume of groundwater removed:		
Total number of samples submitted to lab for analysis:				



FIGURES

Figure 1: Topographic Site Location Map

Figure 2: Aerial Site Location Map

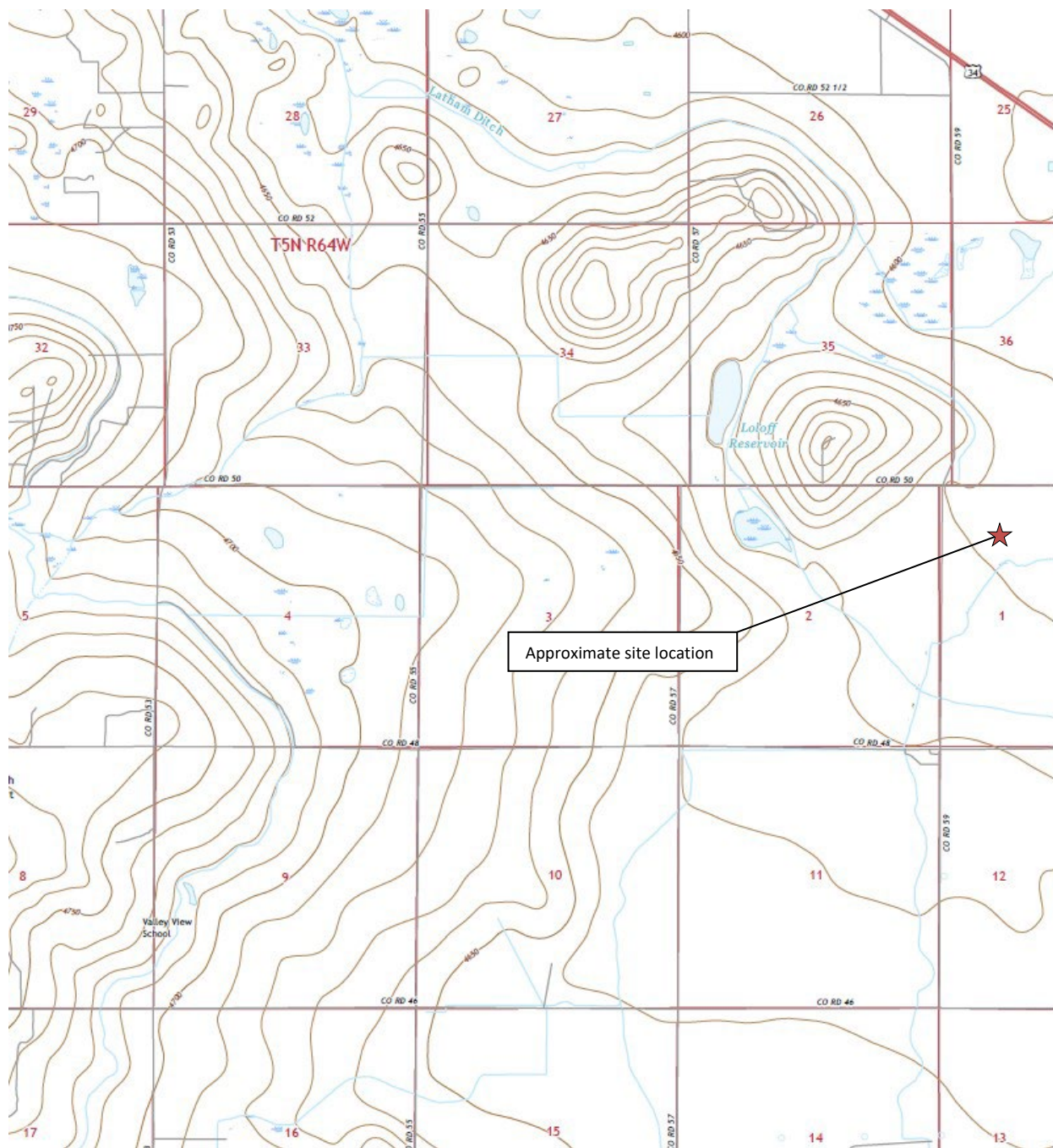
Figure 3: Soil Analytical Map

Figure 4: Polycyclic Aromatic Hydrocarbons Map

Figure 5: Metals in Soil Map

Figure 6: Soil Analytical Map (Flowline Pt. B)

Figure 7: Polycyclic Aromatic Hydrocarbons Map (Flowline Pt. B)



Topographic Site Location Map

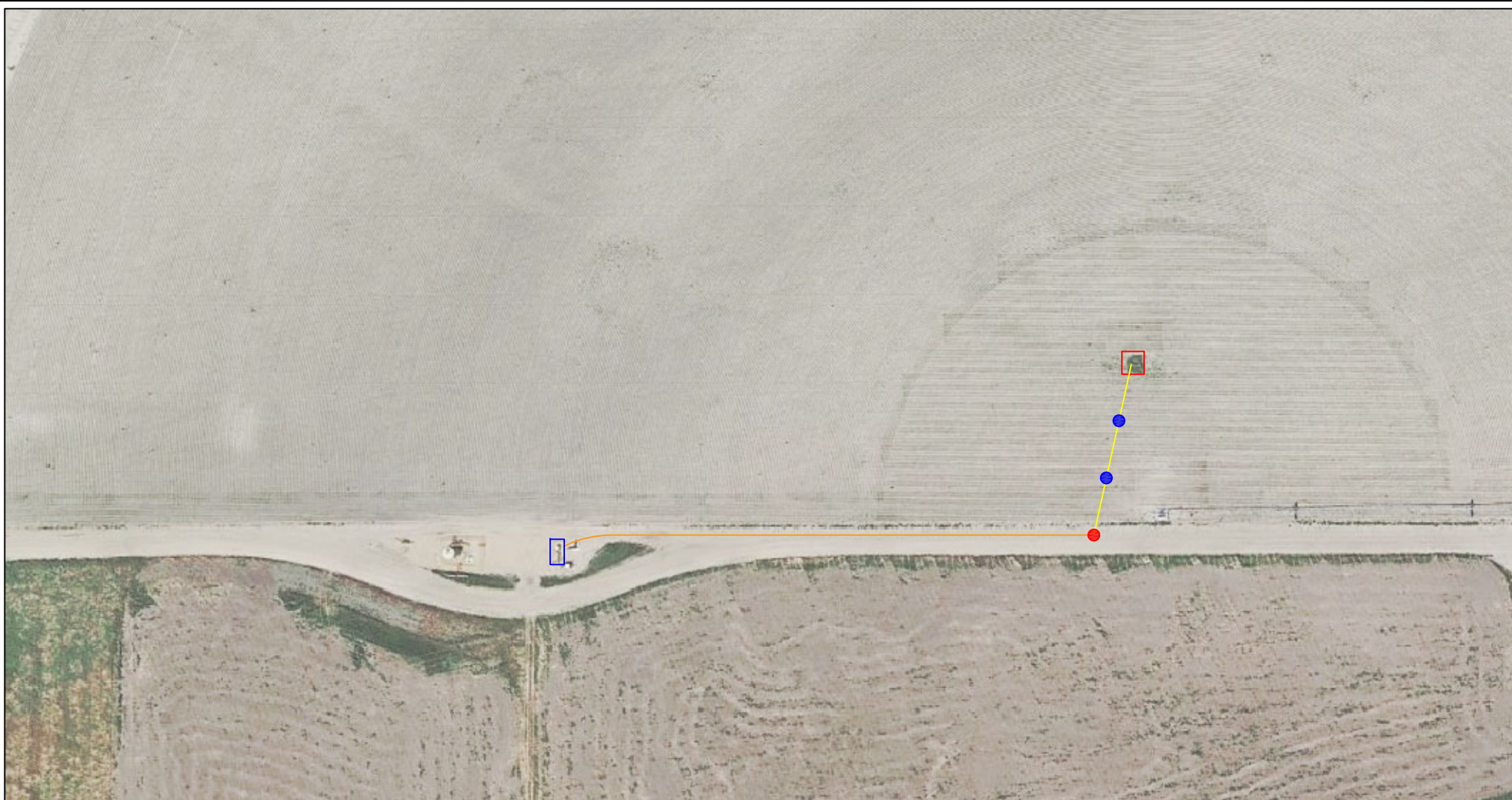
Fuego C #1-19
 Closure Assessment
 40.345490 / -104.503600
 NW¼ NW¼ SEC.1 T4N R64W 6PM
 Weld County, Colorado
 API # 05-123-23166
 Remediation # 20100



EAGLE
 ENVIRONMENTAL
 CONSULTING, INC.

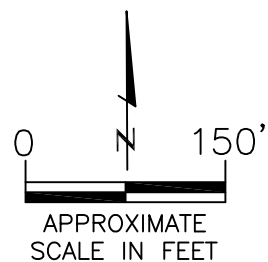
Source: USGS 7.5 Minute Topographic
 Map, Valley View School, CO
 Quadrangle 2019

Figure 1



LEGEND

- FORMER FUEGO C #1-19 WELLHEAD (PLUGGED & ABANDONED)
- ASSOCIATED SEPARATOR
- ASSOCIATED FLOWLINE (REMOVED)
- ASSOCIATED FLOWLINE (ABANDONED IN PLACE)
- APPROXIMATE FLOWLINE SAMPLE LOCATIONS – FIELD SCREENED
- APPROXIMATE FLOWLINE SAMPLE LOCATIONS – SUBMITTED FOR LAB ANALYSIS



AERIAL SITE LOCATION MAP

FUEGO C #1-19
 CLOSURE ASSESSMENT
 40.345490 / -104.503600
 NW1/4 NW1/4 SEC.1 T4N R64W 6PM
 WELD COUNTY, COLORADO
 API # 05-123-23166
 REMEDIATION # 20100

DATE:

04/28/22

FIG. NO.

2

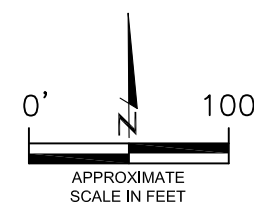
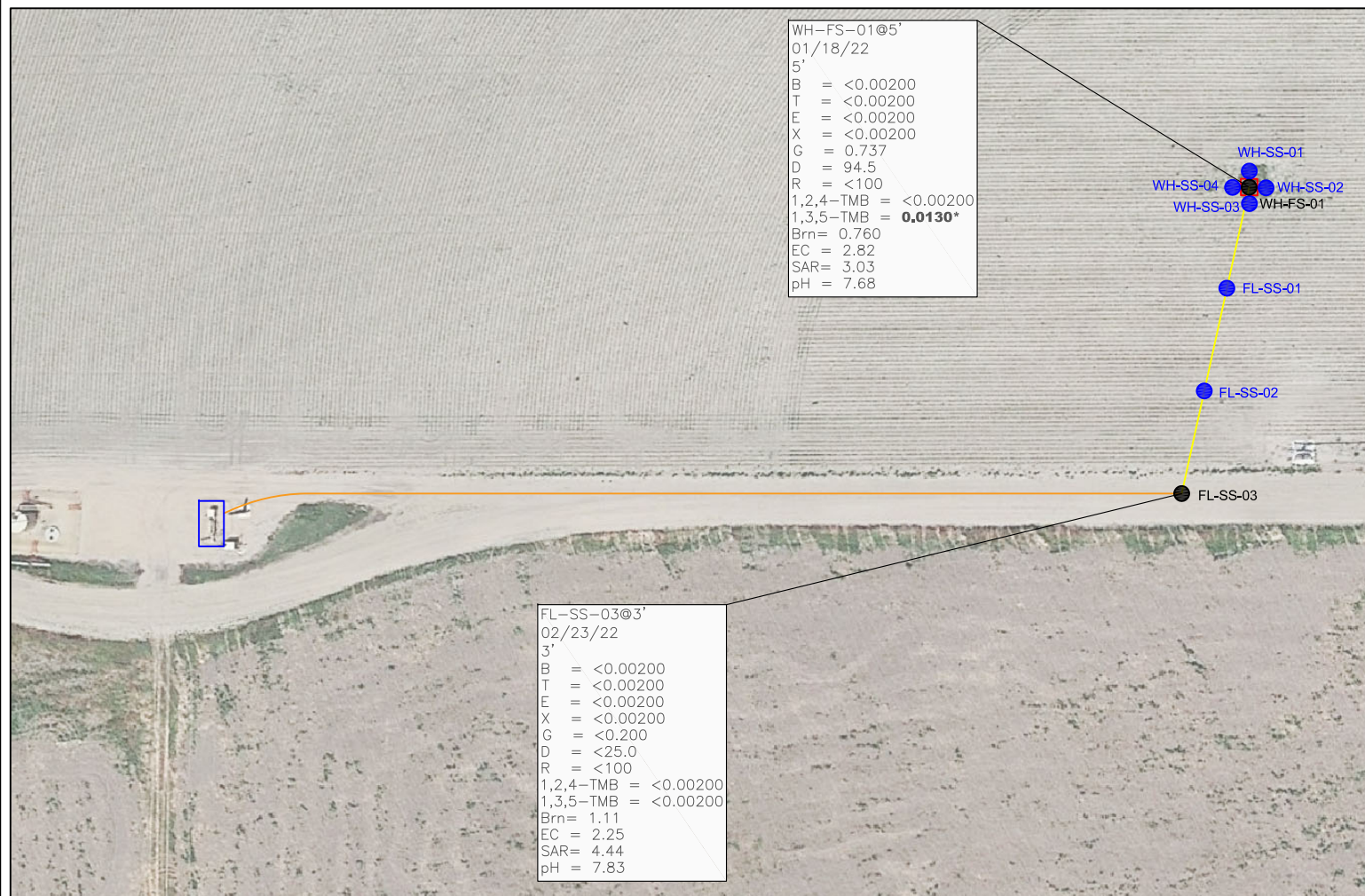
DRAWN BY:

GEC



EAGLE
 ENVIRONMENTAL
 CONSULTING, INC.

8000 W 44th Ave, Wheat Ridge, CO 80033
 Ph: 303-433-0479 • F: 303-325-5449



LEGEND

- INITIAL ASSESSMENT BOUNDARIES
- APPROXIMATE FLOWLINE LOCATION (REMOVED)
- APPROXIMATE FLOWLINE LOCATION (ABANDONED)
- APPROXIMATE LOCATION OF SOIL SAMPLES FIELD SCREENED, ONLY, WITH PHOTOIONIZATION DETECTOR
- APPROXIMATE LOCATION OF SOIL SAMPLES SUBMITTED FOR LABORATORY ANALYSIS

PARAMETERS

SAMPLE LOCATION
DATE
DEPTH (FEET)
B = BENZENE (mg/kg)
T = TOLUENE (mg/kg)
E = ETHYLBENZENE (mg/kg)
X = TOTAL XYLENES (mg/kg)
G = TPH-GRO (mg/kg)
D = TPH-DRO (mg/kg)
R = TPH-RRO (mg/kg)
1,2,4-TMB = 1,2,4 TRIMETHYLBENZENE (mg/kg)
1,3,5-TMB = 1,3,5 TRIMETHYLBENZENE (mg/kg)
Brn= BORON (mg/L)
EC = SPECIFIC CONDUCTANCE (mmhos/cm)
SAR= SODIUM ADSORPTION RATIO
pH = pH (pH UNITS)

mg/kg = MILLIGRAMS PER KILOGRAM
mg/L = MILLIGRAMS PER LITER
mmhos/cm = MILLIMHOS PER CENTIMETER

TPH-GRO = TOTAL PETROLEUM HYDROCARBONS - GASOLINE RANGE ORGANICS
TPH-DRO = TOTAL PETROLEUM HYDROCARBONS - DIESEL RANGE ORGANICS
TPH-RRO = TOTAL PETROLEUM HYDROCARBONS - RESIDUAL RANGE ORGANICS

NOTES:
VALUES PRESENTED WITH A LESS THAN SYMBOL (<) DID NOT CONTAIN CONCENTRATIONS AT OR ABOVE LABORATORY DETECTION LIMITS

VALUES PRESENTED IN **BOLD** TYPEFACE CONTAIN CONCENTRATIONS EXCEEDING THE APPLICABLE COGCC TABLE 915-1 REGULATORY LIMITS FOR THAT COMPOUND.

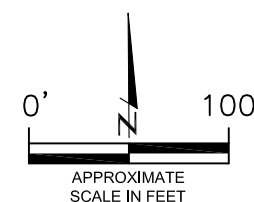
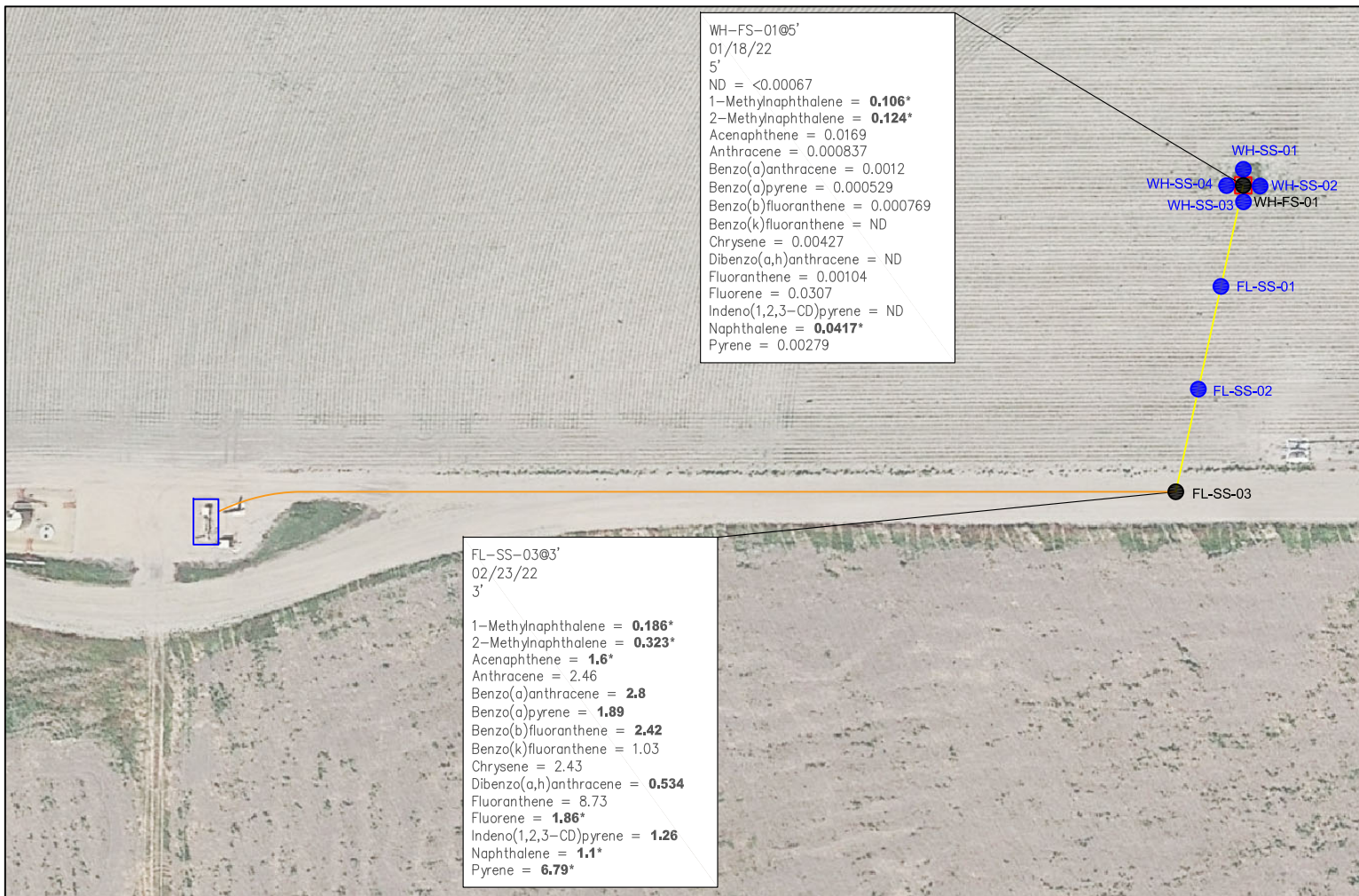
COGCC - COLORADO OIL AND GAS CONSERVATION COMMISSION

SOIL ANALYTICAL MAP
FUEGO C #1-19
CLOSURE ASSESSMENT
40.345490 / -104.503600
NW1/4 NW1/4 SEC.1 T4N R64W 6PM
WELD COUNTY, COLORADO
API # 05-123-23166
REMEDATION # 20100

DATE:
04/28/22
DRAWN BY:
GEC
FIG.
NO. 3



EAGLE
ENVIRONMENTAL
CONSULTING, INC.
8000 W 44th Ave, Wheat Ridge, CO 80033
Ph: 303-433-0479 • F: 303-325-5449



LEGEND

- INITIAL ASSESSMENT BOUNDARIES
- APPROXIMATE FLOWLINE LOCATION (REMOVED)
- APPROXIMATE FLOWLINE LOCATION (ABANDONED)
- APPROXIMATE LOCATION OF SOIL SAMPLES FIELD SCREENED, ONLY, WITH PHOTOIONIZATION DETECTOR
- APPROXIMATE LOCATION OF SOIL SAMPLES SUBMITTED FOR LABORATORY ANALYSIS

PARAMETERS

SAMPLE LOCATION
DATE SAMPLE COLLECTED
APPROXIMATE DEPTH

POLYCYCLIC AROMATIC HYDROCARBONS (PAHs)

NOTE:
CONCENTRATIONS PRESENTED IN mg/kg

mg/kg = MILLIGRAMS PER KILOGRAM

ND - NON-DETECT

NOTE:
VALUES PRESENTED WITH A LESS THAN SYMBOL (<) DID NOT CONTAIN CONCENTRATIONS AT OR ABOVE LABORATORY REPORTING LIMITS

VALUES PRESENTED IN **BOLD** TYPEFACE CONTAIN CONCENTRATIONS EXCEEDING THE APPLICABLE COGCC TABLE 915-1 REGULATORY LIMITS FOR THAT COMPOUND.

VALUES WITH ASTERISK (*) EXCEED COGCC TABLE 915-1 PROTECTION OF GROUNDWATER SOIL SCREENING LEVELS FOR THAT COMPOUND.

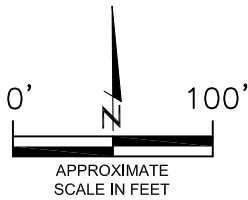
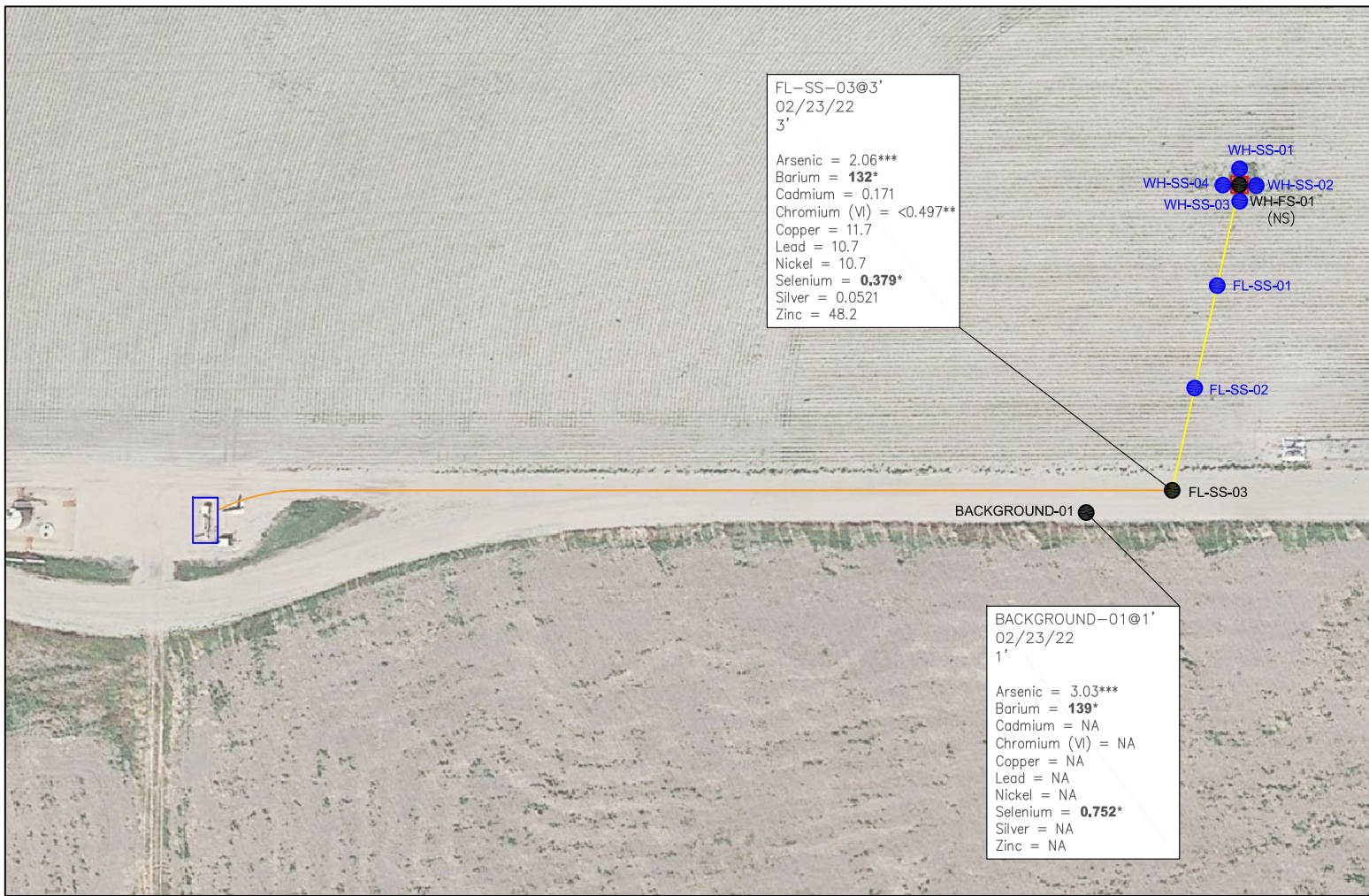
COGCC - COLORADO OIL AND GAS CONSERVATION COMMISSION

POLYCYCLIC AROMATIC HYDROCARBONS MAP
FUEGO C #1-19
CLOSURE ASSESSMENT
40.345490 / -104.503600
NW1/4 NW1/4 SEC.1 T4N R64W 6PM
WELD COUNTY, COLORADO
API # 05-123-23166
REMEDIAL # 20100

DATE:
04/28/22
DRAWN BY:
GEC
FIG.
NO. 4



EAGLE
ENVIRONMENTAL
CONSULTING, INC.
8000 W 44th Ave, Wheat Ridge, CO 80033
Ph: 303-433-0479 • F: 303-325-5449



- LEGEND**
- INITIAL ASSESSMENT BOUNDARIES
 - APPROXIMATE FLOWLINE LOCATION (REMOVED)
 - APPROXIMATE FLOWLINE LOCATION (ABANDONED)
 - APPROXIMATE LOCATION OF SOIL SAMPLES FIELD SCREENED, ONLY, WITH PHOTOIONIZATION DETECTOR
 - APPROXIMATE LOCATION OF SOIL SAMPLES SUBMITTED FOR LABORATORY ANALYSIS

PARAMETERS

SAMPLE LOCATION
DATE SAMPLE COLLECTED
APPROXIMATE DEPTH
Arsenic = (mg/kg)
Barium = (mg/kg)
Cadmium = (mg/kg)
Chromium (VI) = (mg/kg)
Copper = (mg/kg)
Lead = (mg/kg)
Nickel = (mg/kg)
Selenium = (mg/kg)
Silver = (mg/kg)
Zinc = (mg/kg)

mg/kg = MILLIGRAMS PER KILOGRAM

(NS) – NOT SAMPLED
NA – NOT ANALYZED

NOTE:
VALUES PRESENTED WITH A LESS THAN SYMBOL (<) DID NOT CONTAIN CONCENTRATIONS AT OR ABOVE LABORATORY DETECTION LIMITS

VALUES PRESENTED IN **BOLD** VALUES CONTAIN CONCENTRATIONS EXCEEDING COGCC TABLE 915-1 VALUES

*VALUES EXCEED COGCC TABLE 915-1 "PROTECTION OF GROUNDWATER SOIL SCREENING LEVELS" FOR THAT COMPOUND.

**ACHIEVABLE PRACTICAL QUANTITATIVE LIMITS FOR HEXAVALENT CHROMIUM (Cr VI) IN SOILS IS IN THE RANGE OF 0.1 TO 1 mg/kg.

***ARSENIC IS NATURALLY OCCURRING IN COLORADO. LOCAL CLEAN-UP LEVEL (3.79 mg/kg) IS 1.25*BACKGROUND (3.03 mg/kg)

COGCC = COLORADO OIL AND GAS CONSERVATION COMMISSION

METALS IN SOIL MAP
FUEGO C #1-19
CLOSURE ASSESSMENT
40.345490 / -104.503600
NW1/4 NW1/4 SEC.1 T4N R64W 6PM
WELD COUNTY, COLORADO
API # 05-123-23166
REMEDIAL # 20100

DATE:	04/28/22
DRAWN BY:	GEC
FIG. NO.	5



EAGLE
ENVIRONMENTAL
CONSULTING, INC.

8000 W 44th Ave, Wheat Ridge, CO 80033
Ph: 303-433-0479 • F: 303-325-5449



TB-SS-02

TB-SS-02@3'
02/22/22
3'
B = <0.00200
T = <0.00200
E = <0.00200
X = <0.00200
G = <0.200
D = <25.0
R = <100
1,2,4-TMB = <0.00200
1,3,5-TMB = <0.00200
Brn= 0.415
EC = 0.388
SAR= 0.624
pH = 7.96

LEGEND

● APPROXIMATE LOCATION OF SOIL SAMPLE*
SS-02 SUBMITTED FOR LABORATORY ANALYSIS

SAMPLE COLLECTED DURING FACILITY DECOMMISSIONING
ACTIVITIES ASSOCIATED WITH REMEDIATION # 20094

PARAMETERS

SAMPLE LOCATION
DATE
DEPTH (FEET)
B = BENZENE (mg/kg)
T = TOLUENE (mg/kg)
E = ETHYLBENZENE (mg/kg)
X = TOTAL XYLENES (mg/kg)
G = TPH-GRO (mg/kg)
D = TPH-DRO (mg/kg)
R = TPH-RRO (mg/kg)
1,2,4-TMB = 1,2,4 TRIMETHYLBENZENE (mg/kg)
1,3,5-TMB = 1,3,5 TRIMETHYLBENZENE (mg/kg)
Brn= BORON (mg/L)
EC = SPECIFIC CONDUCTANCE (mmhos/cm)
SAR= SODIUM ADSORPTION RATIO
pH = pH (pH UNITS)

mg/kg = MILLIGRAMS PER KILOGRAM
mg/L = MILLIGRAMS PER LITER
mmhos/cm = MILLIMHOS PER CENTIMETER

TPH-GRO = TOTAL PETROLEUM HYDROCARBONS - GASOLINE
RANGE ORGANICS
TPH-DRO = TOTAL PETROLEUM HYDROCARBONS - DIESEL
RANGE ORGANICS
TPH-RRO = TOTAL PETROLEUM HYDROCARBONS - RESIDUAL
RANGE ORGANICS

NOTES:
VALUES PRESENTED WITH A LESS THAN SYMBOL (<) DID NOT
CONTAIN CONCENTRATIONS AT OR ABOVE LABORATORY
DETECTION LIMITS

VALUES PRESENTED IN **BOLD** VALUES CONTAIN
CONCENTRATIONS THAT EXCEED COGCC TABLE 915-1
REGULATORY LIMITS FOR THAT COMPOUND.

COGCC = COLORADO OIL AND GAS CONSERVATION
COMMISSION

SOIL ANALYTICAL MAP

(FLOWLINE PT. B)
FUEGO C #1-19
CLOSURE ASSESSMENT
40.345490 / -104.503600
NW1/4 NW1/4 SEC.1 T4N R64W 6PM
WELD COUNTY, COLORADO
API # 05-123-23166
REMEDATION # 20100

DATE:
04/28/22

DRAWN BY:
GEC

FIG.
NO. 6



EAGLE
ENVIRONMENTAL
CONSULTING, INC.
8000 W 44th Ave, Wheat Ridge, CO 80033
Ph: 303-433-0479 • F: 303-325-5449



TB-SS-02@3'
02/22/22
3'
ND = <0.00067
1-Methylnaphthalene = 0.00248
2-Methylnaphthalene = 0.00215
Acenaphthene = ND
Anthracene = ND
Benzo(a)anthracene = ND
Benzo(a)pyrene = ND
Benzo(b)fluoranthene = ND
Benzo(k)fluoranthene = ND
Chrysene = 0.000983
Dibenzo(a,h)anthracene = ND
Fluoranthene = ND
Fluorene = 0.000787
Indeno(1,2,3-CD)pyrene = ND
Naphthalene = 0.00205
Pyrene = 0.000702

TB-SS-02

LEGEND

● APPROXIMATE LOCATION OF SOIL SAMPLE*
SS-02 SUBMITTED FOR LABORATORY ANALYSIS

SAMPLE COLLECTED DURING FACILITY DECOMMISSIONING
ACTIVITIES ASSOCIATED WITH REMEDIATION # 20094

PARAMETERS

SAMPLE LOCATION
DATE SAMPLE COLLECTED
APPROXIMATE DEPTH

POLYCYCLIC AROMATIC HYDROCARBONS (PAHs)

NOTE:
CONCENTRATIONS PRESENTED IN mg/kg

mg/kg = MILLIGRAMS PER KILOGRAM

ND = NON-DETECT

NOTE:
VALUES PRESENTED WITH A LESS THAN SYMBOL (<) DID NOT
CONTAIN CONCENTRATIONS AT OR ABOVE LABORATORY
DETECTION LIMITS

VALUES PRESENTED IN **BOLD** VALUES CONTAIN
CONCENTRATIONS EXCEEDING COGCC TABLE 915-1
REGULATORY LIMITS.

COGCC = COLORADO OIL AND GAS CONSERVATION COMMISSION

POLYCYCLIC AROMATIC HYDROCARBONS MAP

(FLOWLINE P.T. B)
FUEGO C #1-19
CLOSURE ASSESSMENT
40.345490 / -104.503600
NW1/4 NW1/4 SEC.1 T4N R64W 6PM
WELD COUNTY, COLORADO
API # 05-123-23166
REMEDIATION # 20100

DATE:
04/28/22

DRAWN BY:
GEC

FIG.
NO. 7



EAGLE
ENVIRONMENTAL
CONSULTING, INC.

8000 W 44th Ave, Wheat Ridge, CO 80033
Ph: 303-433-0479 • F: 303-325-5449



TABLES

Table 1: Photoionization Detector Reading Summary

Table 2: Soil Analytical Results Summary

Table 3: Polycyclic Aromatic Hydrocarbons Analytical Results Summary

Table 4: Metals Analytical Results Summary

TABLE 1
PHOTOIONIZATION DETECTOR READING SUMMARY
FUEGO C #1-19
CLOSURE ASSESSMENT
40.345490 / -104.503600
NW1/4 NW1/4 SEC.1 T4N R64W 6PM
WELD COUNTY, COLORADO
API # 05-123-23166
REMEDIALATION # 20100

Sample Location (Latitude/Longitude)	Date	Approximate Depth (feet)	PID Reading (ppm-v)	Lab Submission (Y/N)
WH-SS-01 @ 4.5' (40.345527 / -104.503627)	1/18/2022	4.5	2.6	N
WH-SS-02 @ 4.5' (40.345498 / -104.503575)	1/18/2022	4.5	3.8	N
WH-SS-03 @ 4.5' (40.345476 / -104.503617)	1/18/2022	4.5	2.2	N
WH-SS-04 @ 4.5' (40.345496 / -104.503667)	1/18/2022	4.5	4.8	N
WH-FS-01 @ 5' (40.345500 / -104.503622)	1/18/2022	5	6.1	Y
*TB-SS-02 @ 3' (40.344989 / -104.505721)	2/22/2022	3	73.2	Y
FL-SS-01 @ 3' (40.345318 / -104.503698)	2/23/2022	3	2.6	N
FL-SS-02 @ 3' (40.345194 / -104.503729)	2/23/2022	3	3.1	N
FL-SS-03 @ 3' (40.345004 / -104.503777)	2/23/2022	3	10.1	Y
Background-01 @ 1' (40.344949 / -104.503391)	2/23/2022	1	3.8	Y
(Y/N) = Yes or No ppm-v = parts per million by volume PID = Photoionization Detector				
*Sample collected during facility decommissioning activities associated with Rem. # 20094				

TABLE 2
SOIL ANALYTICAL RESULTS SUMMARY
FUEGO C #1-19
CLOSURE ASSESSMENT
40.345490 / -104.503600
NW1/4 NW1/4 SEC.1 T4N R64W 6PM
WELD COUNTY, COLORADO
API # 05-123-23166
REMEDIAION # 20100

Sample Location (Latitude/Longitude)	Date	Approximate Depth (feet)	PID Reading (ppm-v)	Benzene (mg/kg)	Toluene (mg/kg)	Ethylbenzene (mg/kg)	Total Xylenes (mg/kg)	TPH-GRO (mg/kg)	TPH-DRO (mg/kg)	TPH-RRO (mg/kg)	1,2,4-TMB (mg/kg)	1,3,5-TMB (mg/kg)	Boron (mg/L)	Specific Conductance (mmhos/cm)	pH (pH units)	SAR	
COGCC Table 915-1 Residential Screening Levels (mg/kg)				1.20	490	5.8	58	500			30	27	2	<4	6-8.3	<6	
COGCC Table 915-1 Protection of Groundwater Soil Screening Levels				0.0026	0.69	0.78	9.9	--			0.0081	0.0087	--	--	--	--	
WH-FS-01 @ 5' (40.345500 / -104.503622)	1/18/2022	5	6.1	<0.00200	<0.00200	<0.00200	<0.00200	0.737	94.5	<100	<0.00200	0.0130*	0.760	2.82	7.68	3.03	
*TB-SS-02 @ 3' (40.344989 / -104.505721)	2/22/2022	3	73.2	<0.00200	<0.00200	<0.00200	<0.00200	<0.200	<25.0	<100	<0.00200	<0.00200	0.415	0.388	7.96	0.624	
FL-SS-03 @ 3' (40.345004 / -104.503777)	2/23/2022	3	10.1	<0.00200	<0.00200	<0.00200	<0.00200	<0.200	<25.0	<100	<0.00200	<0.00200	1.11	2.25	7.83	4.44	
COGCC = Colorado Oil and Gas Conservation Commission																	
mg/kg = milligrams per kilogram																	
mmhos/cm = millimhos per centimeter																	
PID = Photoionization Detector																	
ppm-v = parts per million by volume																	
mg/L = milligrams per liter																	
SAR = Sodium Adsorption Ratio																	
Note: Values presented with a less than symbol (<) did not contain concentrations at or above the laboratory MDL and/or reporting limit.																	
Note: Values presented in BOLD contained concentrations exceeding COGCC Table 915-1 Regulatory Limits. Values presented with asterisk (*) exceed COGCC Table 915-1 Protection of Groundwater Soil Screening Levels for that compound.																	
								*Sample collected during facility decommissioning activities associated with Rem. # 20094									
				TPH-GRO = Total Petroleum Hydrocarbons - Gasoline Range Organics				1,2,4-TMB = 1,2,4-Trimethylbenzene				MDL = Minimum Detection Limits					
				TPH-DRO = Total Petroleum Hydrocarbons - Diesel Range Organics				1,3,5-TMB = 1,3,5-Trimethylbenzene									
				TPH-RRO = Total Petroleum Hydrocarbons - Residual Range Organics													

TABLE 3
POLYCYCLIC AROMATIC HYDROCARBONS ANALYTICAL RESULTS SUMMARY
FUEGO C #1-19
CLOSURE ASSESSMENT
40.345490 / -104.503600
NW1/4 NW1/4 SEC.1 T4N R64W 6PM
WELD COUNTY, COLORADO
API # 05-123-23166
REMEDATION # 20100

Sample Location (Latitude/Longitude)	Date	Approximate Depth (feet)	PID Reading (ppm- v)	1-Methyl- naphthalene (mg/kg)	2-Methyl-naphthalene (mg/kg)	Acenaphthene (mg/kg)	Anthracene (mg/kg)	Benzo(a)-anthracene (mg/kg)	Benzo(a)- pyrene (mg/kg)	Benzo(b)- fluoranthene (mg/kg)	Benzo(k)- fluoranthene (mg/kg)	Chrysene (mg/kg)	Dibenzo(a,h)- anthracene (mg/kg)	Fluoranthene (mg/kg)	Fluorene (mg/kg)	Indeno(1,2,3- cd)-pyrene (mg/kg)	Naphthalene (mg/kg)	Pyrene (mg/kg)
COGCC Table 915-1 Residential Screening Levels				18	24	360	1,800	1.1	0.11	1.1	11	110	0.11	240	240	1.1	2	180
COGCC Table 915-1 Protection of Groundwater Soil Screening Levels				0.006	0.019	0.55	5.8	0.011	0.24	0.3	2.9	9	0.096	8.9	0.54	0.98	0.0038	1.3
WH-FS-01 @ 5' (40.345500 / -104.503622)	1/18/2022	5	6.1	0.106*	0.124*	0.0169	0.000837	0.0012	0.000529	0.000769	<0.00067	0.00472	<0.00067	0.00104	0.0307	<0.00067	0.0417	0.00279
*TB-SS-02 @ 3' (40.344989 / -104.505721)	2/22/2022	3	73.2	0.000248	0.00215	<0.00067	<0.00067	<0.00067	<0.00067	<0.00067	<0.00067	0.000983	<0.00067	<0.00067	0.000787	<0.00067	0.00205	0.000702
FL-SS-03 @ 3' (40.345004 / -104.503777)	2/23/2022	3	10.1	0.186*	0.323*	1.6*	2.46	2.8	1.89	2.42	1.03	2.43	0.534	8.73	1.86*	1.26	1.1*	6.79*
COGCC = Colorado Oil and Gas Conservation Commission mg/kg = milligrams per kilogram Note: Values presented with a less than symbol (<) did not contain concentrations at or above the laboratory MDL and/or reporting limit. Note: Values presented in BOLD contained concentrations exceeding COGCC Table 915-1 Regulatory Limits. Values presented with asterisk (*) exceed COGCC Table 915-1 Protection of Groundwater Soil Screening Levels for that compound.																		
				PID = Photoionization Detector MDL - Minimum Detection Limit				*Sample collected during facility decommissioning activities associated with Rem. # 20094										

TABLE 4
METALS ANALYTICAL RESULTS SUMMARY
FUEGO C #1-19
CLOSURE ASSESSMENT
40.345490 / -104.503600
NW1/4 NW1/4 SEC.1 T4N R64W 6PM
WELD COUNTY, COLORADO
API # 05-123-23166
REMEDATION # 20100

Sample Location (Latitude/Longitude)	Date	Approximate Depth (feet)	Arsenic (mg/kg)	Barium (mg/kg)	Cadmium (mg/kg)	Hexavalent Chromium (mg/kg)	Copper (mg/kg)	Lead (mg/kg)	Nickel (mg/kg)	Selenium (mg/kg)	Silver (mg/kg)	Zinc (mg/kg)
COGCC Table 915-1 Residential Screening Levels			0.68***	15,000	71	0.3**	3,100	400	1,500	390	390	23,000
COGCC Table 915-1 Protection of Groundwater Soil Screening Levels			0.29***	82	0.38	0.00067**	46	14	26	0.26	0.8	370
Local Cleanup Levels			3.79	N/A	N/A	N/A	N/A	N/A	N/A	N/A	N/A	N/A
FL-SS-03 @ 3' (40.345004 / -104.503777)	2/23/2022	3	2.06***	132*	0.171	<0.497**	11.7	10.7	10.7	0.379*	0.0521	48.2
Background-01 @ 1' (40.344949 / -104.503391)	2/23/2022	1	3.03***	139*	NA	NA	NA	NA	NA	0.752*	NA	NA
COGCC = Colorado Oil and Gas Conservation Commission mg/kg = milligrams per kilogram Notes: Values presented with a less than symbol (<) did not contain concentrations at or above the laboratory reporting limit or minimum detection levels. Values presented in BOLD contained concentrations exceeding applicable COGCC Table 915-1 Regulatory Limits Values presented with an asterisk (*) contained concentrations exceeding COGCC Table 915-1 Protection of Groundwater Soil Screening Levels **Achievable practical quantitative limits for Hexavalent Chromium in soils is in the range of 0.1 to 1 mg/kg. ***Arsenic is naturally occurring in Colorado. Local "clean-up level" (3.79 mg/kg) is 1.25*Background (3.03 mg/kg)												



ATTACHMENT A

Photo Log

Fuego C #1-19

API # 05-123-23166

Remediation # 20100

Closure Assessment

January/February 2022

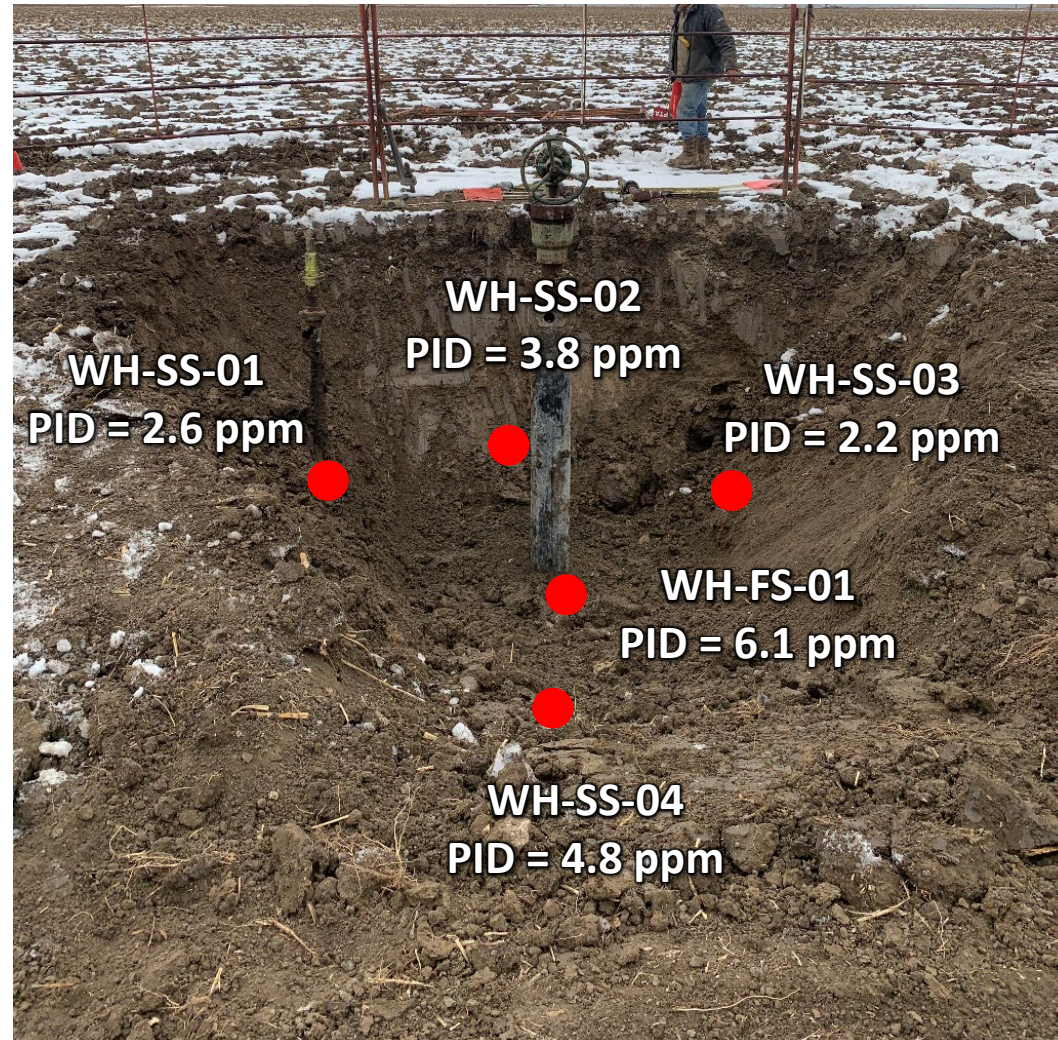


EAGLE
ENVIRONMENTAL
CONSULTING, INC.

8000 W 44th Ave, Wheat Ridge, CO 80033
Ph: 303-433-0479 • F: 303-325-5449



Wellhead Excavation – 01/18/22



Looking east

No petroleum hydrocarbon staining or odor observed

Flowline Assessment - 02/22/22



Looking west

Pt. B/terminus (at separator) collected during facility decommissioning activities associated with Rem. # 20094

Petroleum hydrocarbon staining and odor observed

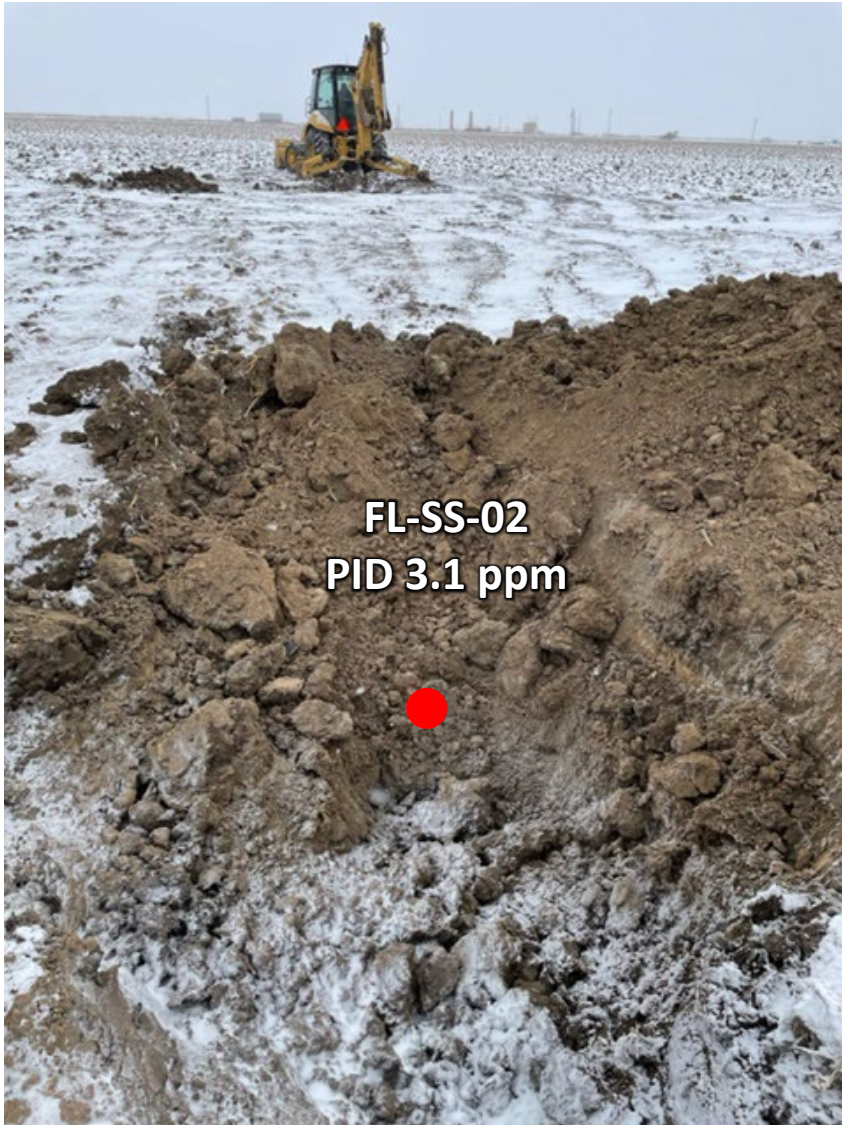
Flowline Assessment – 02/23/22



Looking north

No petroleum hydrocarbon staining or odor observed

Flowline Assessment – 02/23/22



Looking north

No petroleum hydrocarbon staining or odor observed

Flowline Assessment – 02/23/22



FL-SS-03
PID 10.1 ppm

Looking north at change of direction location

No petroleum hydrocarbon staining or odor observed



ATTACHMENT B

Laboratory Analytical Reports*

***Flowline Pt. B sample collected during decommissioning activities associated with Rem. # 20100.**

Sample included on lab report for battery – See TB-SS-02@3'



January 26, 2022

Eagle Environmental Consulting, Inc.

Martin C Eckert III

8000 W 44th Ave

Wheat Ridge CO 80033

Project Name - Noble - Fuego C #1-19

Project Number - [none]

Attached are your analytical results for Noble - Fuego C #1-19 received by Origins Laboratory, Inc. January 18, 2022. This project is associated with Origins project number Y201319-01.

The analytical results in the following report were analyzed under the guidelines of EPA Methods. These methods are identified as follows; "SW" are defined in SW-846, "EPA" are defined in 40CFR part 136 and "SM" are defined in the most current revision of Standard Methods For the Examination of Water and Wastewater.

The analytical results apply specifically to the samples and analyses specified per the attached Chain of Custody. As such, this report shall not be reproduced except in full, without the written approval of Origin's laboratory.

Unless otherwise noted, the analytical results for all soil samples are reported on a wet weight basis. All analytical analyses were performed under NELAP guidelines unless noted by a data qualifier.

Any holding time exceedances, deviations from the method specifications or deviations from Origins Laboratory's Standard Operating Procedures are outlined in the case narrative.

Thank you for selecting Origins for your analytical needs. Please contact us with any questions concerning this report, or if we can help with anything at all.

Origins Laboratory, Inc.
303.433.1322
o-squad@oelabinc.com



1725 Elk Place, Denver, CO 80211 | Phone: 303.433.1322 | Fax: 303.265.9645

Eagle Environmental Consulting, Inc.

8000 W 44th Ave

Wheat Ridge CO 80033

Martin C Eckert III

Project Number: [none]

Project: Noble - Fuego C #1-19

CROSS REFERENCE REPORT

Sample ID	Laboratory ID	Matrix	Date Sampled	Date Received
WH-FS-01@5'	Y201319-01	Soil	January 18, 2022 11:54	01/18/2022 16:11

Origins Laboratory, Inc.



The results in this report apply to the samples analyzed in accordance with the chain of custody document. This analytical report must be reproduced in its entirety.

Eagle Environmental Consulting, Inc.
8000 W 44th Ave
Wheat Ridge CO 80033

Martin C Eckert III
Project Number: [none]
Project: Noble - Fuego C #1-19

Origins Laboratory

F-012207-01-R1
Effective Date: 01/09/12

Sample Receipt Checklist

Origins Work Order: Y201319

Client: Eagle

Client Project ID: Fuego C1-19

Checklist Completed by: JG

Shipped Via: HD

(UPS, FedEx, Hand Delivered, Pick-up, etc.)

Date/time completed: 1/18/22

Airbill #: N/A

Matrix(s) Received: (Check all that apply): ☒ Soil/Solid ☐ Water ☐ Other: _____

Cooler Number/Temperature: 1, 5.0 °C 1 °C 1 °C (Describe)

Thermometer ID: T003

Requirement Description	Yes	No	N/A	Comments (if any)
If samples require cooling, was the temperature between 0°C to ≤ 6°C ⁽¹⁾ ?	<input checked="" type="checkbox"/>	<input type="checkbox"/>	<input type="checkbox"/>	
Is there ice present (document if blue ice is used)?	<input checked="" type="checkbox"/>	<input type="checkbox"/>	<input type="checkbox"/>	
Are custody seals present on cooler? (if so, document in comments if they are signed and dated, broken or intact)	<input type="checkbox"/>	<input checked="" type="checkbox"/>	<input type="checkbox"/>	
Are custody seals present on each sample container? (if so, document in comments if they are signed and dated, broken or intact)	<input type="checkbox"/>	<input checked="" type="checkbox"/>	<input type="checkbox"/>	
Were all samples received intact ⁽¹⁾ ?	<input checked="" type="checkbox"/>	<input type="checkbox"/>	<input type="checkbox"/>	
Was adequate sample volume provided ⁽¹⁾ ?	<input checked="" type="checkbox"/>	<input type="checkbox"/>	<input type="checkbox"/>	
Are short holding time analytes or samples with HTs due within 48 hours present ⁽¹⁾ ?	<input type="checkbox"/>	<input checked="" type="checkbox"/>	<input type="checkbox"/>	
Is a chain-of-custody (COC) present and filled out completely ⁽¹⁾ ?	<input checked="" type="checkbox"/>	<input type="checkbox"/>	<input type="checkbox"/>	
Does the COC agree with the number and type of sample bottles received ⁽¹⁾ ?	<input checked="" type="checkbox"/>	<input type="checkbox"/>	<input type="checkbox"/>	
Do the sample IDs on the bottle labels match the COC ⁽¹⁾ ?	<input checked="" type="checkbox"/>	<input type="checkbox"/>	<input type="checkbox"/>	
Is the COC properly relinquished by the client with date and time recorded ⁽¹⁾ ?	<input checked="" type="checkbox"/>	<input type="checkbox"/>	<input type="checkbox"/>	
For volatiles in water – is there headspace (> ¼ inch bubble) present? If yes, contact client and note in narrative.	<input type="checkbox"/>	<input type="checkbox"/>	<input checked="" type="checkbox"/>	
Are samples preserved that require preservation and was it checked ⁽¹⁾ ? (note ID of confirmation instrument used in comments) / (preservation is not confirmed for subcontracted analyses in order to insure sample integrity)/(pH <2 for samples preserved with HNO ₃ , HCL, H ₂ SO ₄) / (pH >10 for samples preserved with NaAsO ₂ +NaOH, ZnAc+NaOH)	<input type="checkbox"/>	<input type="checkbox"/>	<input checked="" type="checkbox"/>	
Additional Comments (if any):				

⁽¹⁾If NO, then contact the client before proceeding with analysis and note date/time and person contacted as well as the corrective action to in the additional comments (above) and the case narrative.

Reviewed by (Project Manager) JG

Date/Time Reviewed 1/19/22

Origins Laboratory, Inc.

The results in this report apply to the samples analyzed in accordance with the chain of custody document. This analytical report must be reproduced in its entirety.

Eagle Environmental Consulting, Inc.
8000 W 44th Ave
Wheat Ridge CO 80033

Martin C Eckert III
Project Number: [none]
Project: Noble - Fuego C #1-19

WH-FS-01@5'

1/18/2022 11:54:00AM

Analyte	Result	Min Detection Limit	Reporting Limit	Units	Dilution	Batch	Prepared	Analyzed	Notes
---------	--------	---------------------	-----------------	-------	----------	-------	----------	----------	-------

Origins Laboratory, Inc.
Y201319-01 (Soil)

Boron (DTPA Sorbitol)

Boron	0.760	0.200	mg/L	1	B2A1909	01/19/2022	01/20/2022	
-------	-------	-------	------	---	---------	------------	------------	--

DRO/ORO by EPA 8015D

Diesel (C10-C28)	94.5	25.0	mg/kg	1	B2A1812	01/18/2022	01/19/2022	
Residual Range Organics (C28-C40)	ND	100	"	"	"	"	"	U

Surrogate: o-Terphenyl	91.2 %	50-150	"	"	"	"	"	
------------------------	--------	--------	---	---	---	---	---	--

GBTEX+TMBs by 8260D

1,2,4-Trimethylbenzene	ND	0.00200	mg/kg	1	B2A2407	01/24/2022	01/24/2022	U
1,3,5-Trimethylbenzene	0.0130	0.00200	"	"	"	"	"	
Benzene	ND	0.00200	"	"	"	"	"	U
Ethylbenzene	ND	0.00200	"	"	"	"	"	U
Toluene	ND	0.00200	"	"	"	"	"	U
Xylenes, total	ND	0.00200	"	"	"	"	"	U
Gasoline Range Hydrocarbons	0.737	0.200	"	"	"	"	"	

Surrogate: 1,2-Dichloroethane-d4	115 %	70-130	"	"	"	"	"	
Surrogate: Toluene-d8	96.0 %	70-130	"	"	"	"	"	

Origins Laboratory, Inc.



The results in this report apply to the samples analyzed in accordance with the chain of custody document. This analytical report must be reproduced in its entirety.

Eagle Environmental Consulting, Inc.
8000 W 44th Ave
Wheat Ridge CO 80033

Martin C Eckert III
Project Number: [none]
Project: Noble - Fuego C #1-19

WH-FS-01@5'

1/18/2022 11:54:00AM

Analyte	Result	Min Detection Limit	Reporting Limit	Units	Dilution	Batch	Prepared	Analyzed	Notes
---------	--------	---------------------	-----------------	-------	----------	-------	----------	----------	-------

Origins Laboratory, Inc.
Y201319-01 (Soil)

GBTEX+TMBs by 8260D

Surrogate: 4-Bromofluorobenzene	99.9 %	70-130	B2A24 07	01/24/2022	01/24/2022
---------------------------------	--------	--------	-------------	------------	------------

Metals by Saturated Paste by EPA 6010

Calcium	20.4	0.499	meq/L	10	[CALC]	01/19/2022	01/20/2022
Magnesium	6.46	0.823	"	"	"	"	"
Sodium	11.1	0.435	"	"	"	"	"

PAH by 8270D SIM

1-Methylnaphthalene	0.106	0.000364	0.00067	mg/Kg	1	L595492	01/20/2022	01/21/2022
2-Methylnaphthalene	0.124	0.000645	0.00067	"	"	"	"	"
Acenaphthene	0.0169	0.000304	0.00067	"	"	"	"	"
Anthracene	0.000837	0.000334	0.00067	"	"	"	"	"
Benzo(a)anthracene	0.0012	0.000493	0.00067	"	"	"	"	"
Benzo(a)pyrene	0.000529	0.000468	0.00067	"	"	"	"	"
Benzo(b)fluoranthene	0.000769	0.000585	0.00067	"	"	"	"	"
Benzo(k)fluoranthene	ND	0.000437	0.00067	"	"	"	"	"
Chrysene	0.00427	0.000624	0.00067	"	"	"	"	"
Dibenz(a,h)anthracene	ND	0.000614	0.00067	"	"	"	"	"
Fluoranthene	0.00104	0.000394	0.00067	"	"	"	"	"
Fluorene	0.0307	0.000286	0.00067	"	"	"	"	"
Indeno(1,2,3-cd)pyrene	ND	0.000627	0.00067	"	"	"	"	"

Origins Laboratory, Inc.

The results in this report apply to the samples analyzed in accordance with the chain of custody document. This analytical report must be reproduced in its entirety.

Eagle Environmental Consulting, Inc.
8000 W 44th Ave
Wheat Ridge CO 80033

Martin C Eckert III
Project Number: [none]
Project: Noble - Fuego C #1-19

WH-FS-01@5'

1/18/2022 11:54:00AM

Analyte	Result	Min Detection Limit	Reporting Limit	Units	Dilution	Batch	Prepared	Analyzed	Notes
---------	--------	---------------------	-----------------	-------	----------	-------	----------	----------	-------

Waypoint Analytical, Inc.
Y201319-01 (Soil)

PAH by 8270D SIM

Naphthalene	0.0417	0.000484	0.00067	mg/Kg	1	L595492	01/20/2022	01/21/2022	
Pyrene	0.00279	0.000643	0.00067	"	"	"	"	"	

Surrogate: 2-Fluorobiphenyl	52.9 %		33-115			"	"	"	
Surrogate: 4-Terphenyl-d14	64 %		33-122			"	"	"	
Surrogate: Nitrobenzene-d5	52.9 %		29-110			"	"	"	

pH in Soil by 9045D

pH	7.68			pH Units	1	B2A1910	01/19/2022	01/20/2022	
----	------	--	--	----------	---	---------	------------	------------	--

SAR by 20B Saturated Paste

SAR	3.03			SAR	1	B2A1908	01/19/2022	01/20/2022	
-----	------	--	--	-----	---	---------	------------	------------	--

Specific Conductance Mod. 9050A

Specific Conductance (EC)	2.82		0.00500	mmhos/cm	1	B2A1911	01/19/2022	01/20/2022	
---------------------------	------	--	---------	----------	---	---------	------------	------------	--

Origins Laboratory, Inc.



The results in this report apply to the samples analyzed in accordance with the chain of custody document. This analytical report must be reproduced in its entirety.

Eagle Environmental Consulting, Inc.
8000 W 44th Ave
Wheat Ridge CO 80033

Martin C Eckert III
Project Number: [none]
Project: Noble - Fuego C #1-19

Extractable Petroleum Hydrocarbons by 8015D - Quality Control Origins Laboratory, Inc.

Analyte	Result	Reporting Limit	Units	Spike Level	Source Result	%REC	%REC Limits	RPD	RPD Limit	Notes
Batch B2A1812 - EPA 3550B										
Blank (B2A1812-BLK1)					Prepared: 01/18/2022 Analyzed: 01/18/2022					
Diesel (C10-C28)	ND	25.0	mg/kg							U
Residual Range Organics (C28-C40)	ND	100	"							U
Surrogate: o-Terphenyl	21		"	24.9		85.9	50-150			

Origins Laboratory, Inc.



The results in this report apply to the samples analyzed in accordance with the chain of custody document. This analytical report must be reproduced in its entirety.

Eagle Environmental Consulting, Inc.
8000 W 44th Ave
Wheat Ridge CO 80033

Martin C Eckert III
Project Number: [none]
Project: Noble - Fuego C #1-19

Extractable Petroleum Hydrocarbons by 8015D - Quality Control
Origins Laboratory, Inc.

Analyte	Result	Reporting Limit	Units	Spike Level	Source Result	%REC	%REC Limits	RPD	RPD Limit	Notes
Batch B2A1812 - EPA 3550B										
LCS (B2A1812-BS1)					Prepared: 01/18/2022 Analyzed: 01/18/2022					
Diesel (C10-C28)	969	50.0	mg/kg	1000		96.9	70-130			
Residual Range Organics (C28-C40)	963	200	"	1000		96.3	70-130			
Surrogate: o-Terphenyl	41		"	49.8		83.2	50-150			

Origins Laboratory, Inc.



The results in this report apply to the samples analyzed in accordance with the chain of custody document. This analytical report must be reproduced in its entirety.

Eagle Environmental Consulting, Inc.
8000 W 44th Ave
Wheat Ridge CO 80033

Martin C Eckert III
Project Number: [none]
Project: Noble - Fuego C #1-19

Extractable Petroleum Hydrocarbons by 8015D - Quality Control
Origins Laboratory, Inc.

Analyte	Result	Reporting Limit	Units	Spike Level	Source Result	%REC	%REC Limits	RPD	RPD Limit	Notes
---------	--------	-----------------	-------	-------------	---------------	------	-------------	-----	-----------	-------

Batch B2A1812 - EPA 3550B

Matrix Spike (B2A1812-MS1)		Source: Y201302-01			Prepared: 01/18/2022 Analyzed: 01/18/2022					
Diesel (C10-C28)	906	50.0	mg/kg	1000	ND	90.6	70-130			
Residual Range Organics (C28-C40)	1000	200	"	1000	ND	100	70-130			
Surrogate: o-Terphenyl	41		"	49.8		82.3	50-150			

Origins Laboratory, Inc.



The results in this report apply to the samples analyzed in accordance with the chain of custody document. This analytical report must be reproduced in its entirety.

Eagle Environmental Consulting, Inc.
8000 W 44th Ave
Wheat Ridge CO 80033

Martin C Eckert III
Project Number: [none]
Project: Noble - Fuego C #1-19

Extractable Petroleum Hydrocarbons by 8015D - Quality Control
Origins Laboratory, Inc.

Analyte	Result	Reporting Limit	Units	Spike Level	Source Result	%REC	%REC Limits	RPD	RPD Limit	Notes
---------	--------	-----------------	-------	-------------	---------------	------	-------------	-----	-----------	-------

Batch B2A1812 - EPA 3550B

Matrix Spike Dup (B2A1812-MSD1)		Source: Y201302-01			Prepared: 01/18/2022 Analyzed: 01/18/2022					
Diesel (C10-C28)	928	50.0	mg/kg	1000	ND	92.8	70-130	2.41	35	
Residual Range Organics (C28-C40)	965	200	"	1000	ND	96.5	70-130	3.71	35	
Surrogate: o-Terphenyl	40		"	49.8		81.4	50-150			

Origins Laboratory, Inc.



The results in this report apply to the samples analyzed in accordance with the chain of custody document. This analytical report must be reproduced in its entirety.

Eagle Environmental Consulting, Inc.
8000 W 44th Ave
Wheat Ridge CO 80033

Martin C Eckert III
Project Number: [none]
Project: Noble - Fuego C #1-19

Extractable Petroleum Hydrocarbons by 8015D - Quality Control

Origins Laboratory, Inc.

Analyte	Result	Reporting Limit	Units	Spike Level	Source Result	%REC	%REC Limits	RPD	RPD Limit	Notes
Batch B2A2407 - EPA 5030 (soil)										
Blank (B2A2407-BLK1)					Prepared: 01/24/2022 Analyzed: 01/24/2022					
1,2,4-Trimethylbenzene	ND	0.00200	mg/kg							U
1,3,5-Trimethylbenzene	ND	0.00200	"							U
Benzene	ND	0.00200	"							U
Ethylbenzene	ND	0.00200	"							U
Naphthalene	ND	0.0100	"							U
Toluene	ND	0.00200	"							U
Xylenes, total	ND	0.00200	"							U
Gasoline Range Hydrocarbons	ND	0.200	"							U
Surrogate: 1,2-Dichloroethane-d4	0.13		"	0.125	103		70-130			
Surrogate: Toluene-d8	0.11		"	0.125	91.8		70-130			
Surrogate: 4-Bromofluorobenzene	0.12		"	0.125	93.5		70-130			

Origins Laboratory, Inc.



The results in this report apply to the samples analyzed in accordance with the chain of custody document. This analytical report must be reproduced in its entirety.

Eagle Environmental Consulting, Inc.
8000 W 44th Ave
Wheat Ridge CO 80033

Martin C Eckert III
Project Number: [none]
Project: Noble - Fuego C #1-19

Volatile Organic Compounds by GC/MS SW846 8260D - Quality Control
Origins Laboratory, Inc.

Analyte	Result	Reporting Limit	Units	Spike Level	Source Result	%REC	%REC Limits	RPD	RPD Limit	Notes
Batch B2A2407 - EPA 5030 (soil)										
LCS (B2A2407-BS1)					Prepared: 01/24/2022 Analyzed: 01/24/2022					
1,2,4-Trimethylbenzene	0.0811	0.00200	mg/kg	0.100		81.1	70-130			
1,3,5-Trimethylbenzene	0.0831	0.00200	"	0.100		83.1	70-130			
Benzene	0.0935	0.00200	"	0.100		93.5	70-130			
Ethylbenzene	0.0840	0.00200	"	0.100		84.0	70-130			
Naphthalene	0.0813	0.0100	"	0.100		81.3	70-130			
Toluene	0.0852	0.00200	"	0.100		85.2	70-130			
o-Xylene	0.0823	0.00200	"	0.100		82.3	70-130			
m,p-Xylene	0.169	0.00400	"	0.200		84.3	70-130			
Surrogate: 1,2-Dichloroethane-d4	0.13		"	0.125		103	70-130			
Surrogate: Toluene-d8	0.11		"	0.125		91.3	70-130			
Surrogate: 4-Bromofluorobenzene	0.12		"	0.125		96.2	70-130			

Origins Laboratory, Inc.



The results in this report apply to the samples analyzed in accordance with the chain of custody document. This analytical report must be reproduced in its entirety.

Eagle Environmental Consulting, Inc.
8000 W 44th Ave
Wheat Ridge CO 80033

Martin C Eckert III
Project Number: [none]
Project: Noble - Fuego C #1-19

Volatile Organic Compounds by GC/MS SW846 8260D - Quality Control
Origins Laboratory, Inc.

Analyte	Result	Reporting Limit	Units	Spike Level	Source Result	%REC	%REC Limits	RPD	RPD Limit	Notes
Batch B2A2407 - EPA 5030 (soil)										
Matrix Spike (B2A2407-MS1)		Source: Y201295-01			Prepared: 01/24/2022 Analyzed: 01/24/2022					
1,2,4-Trimethylbenzene	0.0852	0.00200	mg/kg	0.100	ND	85.2	70-130			
1,3,5-Trimethylbenzene	0.0865	0.00200	"	0.100	ND	86.5	70-130			
Benzene	0.0989	0.00200	"	0.100	ND	98.9	70-130			
Ethylbenzene	0.0877	0.00200	"	0.100	ND	87.7	70-130			
Naphthalene	0.0947	0.0100	"	0.100	0.000520	94.2	70-130			
Toluene	0.0888	0.00200	"	0.100	ND	88.8	70-130			
o-Xylene	0.0859	0.00200	"	0.100	ND	85.9	70-130			
m,p-Xylene	0.177	0.00400	"	0.200	ND	88.3	70-130			
Surrogate: 1,2-Dichloroethane-d4	0.13		"	0.125		105	70-130			
Surrogate: Toluene-d8	0.11		"	0.125		89.6	70-130			
Surrogate: 4-Bromofluorobenzene	0.12		"	0.125		95.3	70-130			

Origins Laboratory, Inc.

The results in this report apply to the samples analyzed in accordance with the chain of custody document. This analytical report must be reproduced in its entirety.

Eagle Environmental Consulting, Inc.
8000 W 44th Ave
Wheat Ridge CO 80033

Martin C Eckert III
Project Number: [none]
Project: Noble - Fuego C #1-19

Volatile Organic Compounds by GC/MS SW846 8260D - Quality Control
Origins Laboratory, Inc.

Analyte	Result	Reporting Limit	Units	Spike Level	Source Result	%REC	%REC Limits	RPD	RPD Limit	Notes
Batch B2A2407 - EPA 5030 (soil)										
Matrix Spike Dup (B2A2407-MSD1)		Source: Y201295-01			Prepared: 01/24/2022 Analyzed: 01/24/2022					
1,2,4-Trimethylbenzene	0.0811	0.00200	mg/kg	0.100	ND	81.1	70-130	4.98	20	
1,3,5-Trimethylbenzene	0.0814	0.00200	"	0.100	ND	81.4	70-130	6.03	20	
Benzene	0.0943	0.00200	"	0.100	ND	94.3	70-130	4.76	20	
Ethylbenzene	0.0832	0.00200	"	0.100	ND	83.2	70-130	5.31	20	
Naphthalene	0.0865	0.0100	"	0.100	0.000520	86.0	70-130	9.07	20	
Toluene	0.0849	0.00200	"	0.100	ND	84.9	70-130	4.45	20	
o-Xylene	0.0822	0.00200	"	0.100	ND	82.2	70-130	4.43	20	
m,p-Xylene	0.167	0.00400	"	0.200	ND	83.6	70-130	5.42	20	
Surrogate: 1,2-Dichloroethane-d4	0.13		"	0.125		102	70-130			
Surrogate: Toluene-d8	0.11		"	0.125		91.0	70-130			
Surrogate: 4-Bromofluorobenzene	0.12		"	0.125		94.5	70-130			

Origins Laboratory, Inc.



The results in this report apply to the samples analyzed in accordance with the chain of custody document. This analytical report must be reproduced in its entirety.

Eagle Environmental Consulting, Inc.
8000 W 44th Ave
Wheat Ridge CO 80033

Martin C Eckert III
Project Number: [none]
Project: Noble - Fuego C #1-19

Volatile Organic Compounds by GC/MS SW846 8260D - Quality Control

Origins Laboratory, Inc.

Analyte	Result	Reporting Limit	Units	Spike Level	Source Result	%REC	%REC Limits	RPD	RPD Limit	Notes
---------	--------	-----------------	-------	-------------	---------------	------	-------------	-----	-----------	-------

Saturated Paste - Quality Control

Origins Laboratory, Inc.

Analyte	Result	Reporting Limit	Units	Spike Level	Source Result	%REC	%REC Limits	RPD	RPD Limit	Notes
---------	--------	-----------------	-------	-------------	---------------	------	-------------	-----	-----------	-------

Batch B2A1910 - NO PREP

Duplicate (B2A1910-DUP1)

Source: Y201315-01

Prepared: 01/19/2022 Analyzed: 01/20/2022

pH	8.12		pH Units	8.16		0.491	25
----	------	--	----------	------	--	-------	----

Batch B2A1911 - NO PREP

Blank (B2A1911-BLK1)

Prepared: 01/19/2022 Analyzed: 01/20/2022

Specific Conductance (EC)	0.000800	0.00500	mmhos/cm
---------------------------	----------	---------	----------

Duplicate (B2A1911-DUP1)

Source: Y201315-01

Prepared: 01/19/2022 Analyzed: 01/20/2022

Specific Conductance (EC)	0.542	0.00500	mmhos/cm	0.613		12.4	25
---------------------------	-------	---------	----------	-------	--	------	----

Origins Laboratory, Inc.



The results in this report apply to the samples analyzed in accordance with the chain of custody document. This analytical report must be reproduced in its entirety.

Eagle Environmental Consulting, Inc.
8000 W 44th Ave
Wheat Ridge CO 80033

Martin C Eckert III
Project Number: [none]
Project: Noble - Fuego C #1-19

PAH by 8270D SIM - Quality Control
Waypoint Analytical, Inc.

Analyte	Result	Reporting Limit	Units	Spike Level	Source Result	%REC	%REC Limits	RPD	RPD Limit	Notes
---------	--------	-----------------	-------	-------------	---------------	------	-------------	-----	-----------	-------

Batch L595492 - 3550B

MSD (L 87425-MSD-L595492)		Source: Y201319-01			Prepared: 01/20/2022 Analyzed: 01/21/2022					
Pyrene	0.101	0.000643	mg/Kg	0.167	0.00279	58.8	30-130	2.9	30	
Indeno(1,2,3-cd)pyrene	0.162	0.000627	"	0.167	87425	97	30-130	14.5	30	
Fluorene	0.124	0.000286	"	0.167	0.0307	55.8	30-130	1.6	30	
Fluoranthene	0.107	0.000394	"	0.167	0.00104	63.4	30-130	5.4	30	
Dibenz(a,h)anthracene	0.168	0.000614	"	0.167	87425	101	30-130	15.3	30	
Chrysene	0.113	0.000624	"	0.167	0.00427	65.1	30-130	2.6	30	
Benzo(k)fluoranthene	0.102	0.000437	"	0.167	87425	61	30-130	3.8	30	
Naphthalene	0.147	0.000484	"	0.167	0.0417	63	30-130	1.3	30	
1-Methylnaphthalene	0.24	0.000364	"	0.167	0.106	80.2	30-130	11.9	30	
Benzo(a)pyrene	0.115	0.000468	"	0.167	0.000529	68.8	30-130	3.4	30	
Benzo(a)anthracene	0.107	0.000493	"	0.167	0.0012	63.3	30-130	6.3	30	
Anthracene	0.0777	0.000334	"	0.167	0.000837	46	30-130	3.2	30	
Acenaphthene	0.0995	0.000304	"	0.167	0.0169	49.4	30-130	2.1	30	
2-Methylnaphthalene	0.131	0.000645	"	0.167	0.124	4.1	30-130	50.7	30	*
Benzo(b)fluoranthene	0.0961	0.000585	"	0.167	0.000769	57	30-130	1	30	
Surrogate: 4-Terphenyl-d14	64.8		"	0.333	212	64.8	33-122			
Surrogate: 2-Fluorobiphenyl	56.4		"	0.333	175	56.4	33-115			
Surrogate: Nitrobenzene-d5	49.5		"	0.333	175	49.5	29-110			

MS (L 87425-MS-L595492)		Source: Y201319-01			Prepared: 01/20/2022 Analyzed: 01/21/2022					
Chrysene	0.11	0.000624	mg/Kg	0.166	0.00427	63.6	30-130			
Benzo(k)fluoranthene	0.106	0.000437	"	0.166	87425	63.8	30-130			
Benzo(b)fluoranthene	0.0951	0.000585	"	0.166	0.000769	56.8	30-130			
Benzo(a)pyrene	0.119	0.000468	"	0.166	0.000529	71.6	30-130			
Benzo(a)anthracene	0.114	0.000493	"	0.166	0.0012	67.9	30-130			
Dibenz(a,h)anthracene	0.144	0.000614	"	0.166	87425	86.7	30-130			
Acenaphthene	0.0974	0.000304	"	0.166	0.0169	48.4	30-130			

Origins Laboratory, Inc.

The results in this report apply to the samples analyzed in accordance with the chain of custody document. This analytical report must be reproduced in its entirety.

Eagle Environmental Consulting, Inc.
8000 W 44th Ave
Wheat Ridge CO 80033

Martin C Eckert III
Project Number: [none]
Project: Noble - Fuego C #1-19

PAH by 8270D SIM - Quality Control
Waypoint Analytical, Inc.

Analyte	Result	Reporting Limit	Units	Spike Level	Source Result	%REC	%REC Limits	RPD	RPD Limit	Notes
---------	--------	-----------------	-------	-------------	---------------	------	-------------	-----	-----------	-------

Batch L595492 - 3550B

MS (L 87425-MS-L595492)		Source: Y201319-01			Prepared: 01/20/2022 Analyzed: 01/21/2022					
2-Methylnaphthalene	0.22	0.000645	mg/Kg	0.166	0.124	57.8	30-130			
Anthracene	0.0752	0.000334	"	0.166	0.000837	44.7	30-130			
Fluoranthene	0.113	0.000394	"	0.166	0.00104	67.4	30-130			
Fluorene	0.122	0.000286	"	0.166	0.0307	55	30-130			
Indeno(1,2,3-cd)pyrene	0.14	0.000627	"	0.166	87425	84.3	30-130			
Naphthalene	0.149	0.000484	"	0.166	0.0417	64.6	30-130			
Pyrene	0.104	0.000643	"	0.166	0.00279	60.9	30-130			
1-Methylnaphthalene	0.213	0.000364	"	0.166	0.106	64.4	30-130			
Surrogate: 2-Fluorobiphenyl	54		"	0.331	175	54	33-115			
Surrogate: 4-Terphenyl-d14	67.9		"	0.331	212	67.9	33-122			
Surrogate: Nitrobenzene-d5	53.1		"	0.331	175	53.1	29-110			

LCS (LCS-L595492)

Prepared: 01/20/2022 Analyzed: 01/21/2022

Fluoranthene	0.103	0.000394	mg/Kg	0.167		61.6	30-130
Indeno(1,2,3-cd)pyrene	0.102	0.000627	"	0.167		61	30-130
1-Methylnaphthalene	0.0865	0.000364	"	0.167		51.7	30-130
Pyrene	0.102	0.000643	"	0.167		61	30-130
Fluorene	0.0943	0.000286	"	0.167		56.4	30-130
Dibenz(a,h)anthracene	0.106	0.000614	"	0.167		63.4	30-130
Chrysene	0.1	0.000624	"	0.167		59.8	30-130
Benzo(k)fluoranthene	0.1	0.000437	"	0.167		59.8	30-130
2-Methylnaphthalene	0.0883	0.000645	"	0.167		52.8	30-130
Naphthalene	0.0922	0.000484	"	0.167		55.2	30-130
Benzo(b)fluoranthene	0.0885	0.000585	"	0.167		52.9	30-130
Acenaphthene	0.0834	0.000304	"	0.167		49.9	30-130
Anthracene	0.0992	0.000334	"	0.167		59.4	30-130
Benzo(a)anthracene	0.0975	0.000493	"	0.167		58.3	30-130

Origins Laboratory, Inc.

The results in this report apply to the samples analyzed in accordance with the chain of custody document. This analytical report must be reproduced in its entirety.

Eagle Environmental Consulting, Inc.
8000 W 44th Ave
Wheat Ridge CO 80033

Martin C Eckert III
Project Number: [none]
Project: Noble - Fuego C #1-19

PAH by 8270D SIM - Quality Control
Waypoint Analytical, Inc.

Analyte	Result	Reporting Limit	Units	Spike Level	Source Result	%REC	%REC Limits	RPD	RPD Limit	Notes
Batch L595492 - 3550B										
LCS (LCS-L595492)					Prepared: 01/20/2022 Analyzed: 01/21/2022					
Benzo(a)pyrene	0.115	0.000468	mg/Kg	0.167		68.8	30-130			
Surrogate: Nitrobenzene-d5	57		"	0.333		57	29-110			
Surrogate: 2-Fluorobiphenyl	54		"	0.333		54	33-115			
Surrogate: 4-Terphenyl-d14	68.1		"	0.333		68.1	33-122			
LRB (LRB-L595492)					Prepared: 01/20/2022 Analyzed: 01/21/2022					
Chrysene	ND	0.00067	mg/Kg				-			
1-Methylnaphthalene	0.000496	0.00067	"				-			J
Naphthalene	ND	0.00067	"				-			
Indeno(1,2,3-cd)pyrene	ND	0.00067	"				-			
Fluorene	ND	0.00067	"				-			
Fluoranthene	ND	0.00067	"				-			
Dibenz(a,h)anthracene	ND	0.00067	"				-			
Pyrene	ND	0.00067	"				-			
Benzo(k)fluoranthene	ND	0.00067	"				-			
Benzo(b)fluoranthene	ND	0.00067	"				-			
Benzo(a)pyrene	ND	0.00067	"				-			
Benzo(a)anthracene	ND	0.00067	"				-			
Anthracene	ND	0.00067	"				-			
Acenaphthene	ND	0.00067	"				-			
2-Methylnaphthalene	ND	0.00067	"				-			
Surrogate: Nitrobenzene-d5	62.4		"	0.333		62.4	29-110			
Surrogate: 4-Terphenyl-d14	69		"	0.333		69	33-122			
Surrogate: 2-Fluorobiphenyl	67.5		"	0.333		67.5	33-115			

Origins Laboratory, Inc.

The results in this report apply to the samples analyzed in accordance with the chain of custody document. This analytical report must be reproduced in its entirety.

Eagle Environmental Consulting, Inc.
8000 W 44th Ave
Wheat Ridge CO 80033

Martin C Eckert III
Project Number: [none]
Project: Noble - Fuego C #1-19

Notes and Definitions

U Sample is Non-Detect.

J Estimated Value. Analyte below reported quantitation limit.

* QC Failure

ND Analyte NOT DETECTED at or above the reporting limit

RPD Relative Percent Difference

All soil results are reported on a wet weight basis.

Origins Laboratory, Inc.



The results in this report apply to the samples analyzed in accordance with the chain of custody document. This analytical report must be reproduced in its entirety.



March 07, 2022

Eagle Environmental Consulting, Inc.

Martin C Eckert III

8000 W 44th Ave

Wheat Ridge CO 80033

**Project Name - Noble - Amigo 1, Fuego C1-19
Tank Battery**

Project Number - -

Attached are your analytical results for Noble - Amigo 1, Fuego C1-19 Tank Battery received by Origins Laboratory, Inc. February 22, 2022. This project is associated with Origins project number Y202499-01.

The analytical results in the following report were analyzed under the guidelines of EPA Methods. These methods are identified as follows; "SW" are defined in SW-846, "EPA" are defined in 40CFR part 136 and "SM" are defined in the most current revision of Standard Methods For the Examination of Water and Wastewater.

The analytical results apply specifically to the samples and analyses specified per the attached Chain of Custody. As such, this report shall not be reproduced except in full, without the written approval of Origin's laboratory.

Unless otherwise noted, the analytical results for all soil samples are reported on a wet weight basis. All analytical analyses were performed under NELAP guidelines unless noted by a data qualifier.

Any holding time exceedances, deviations from the method specifications or deviations from Origins Laboratory's Standard Operating Procedures are outlined in the case narrative.

Thank you for selecting Origins for your analytical needs. Please contact us with any questions concerning this report, or if we can help with anything at all.

Origins Laboratory, Inc.
303.433.1322
o-squad@oelabinc.com



1725 Elk Place, Denver, CO 80211 | Phone: 303.433.1322 | Fax: 303.265.9645

Eagle Environmental Consulting, Inc.

8000 W 44th Ave

Wheat Ridge CO 80033

Martin C Eckert III

Project Number: -

Project: Noble - Amigo 1, Fuego C1-19 Tank
Battery

CROSS REFERENCE REPORT

Sample ID	Laboratory ID	Matrix	Date Sampled	Date Received
WV-SS-01@4'	Y202499-01	Soil	February 22, 2022 12:50	02/22/2022 16:26
WV-SS-02@4'	Y202499-02	Soil	February 22, 2022 12:51	02/22/2022 16:26
WV-SS-03@4'	Y202499-03	Soil	February 22, 2022 12:52	02/22/2022 16:26
WV-SS-04@4'	Y202499-04	Soil	February 22, 2022 12:53	02/22/2022 16:26
WV-FS-01@5'	Y202499-05	Soil	February 22, 2022 12:54	02/22/2022 16:26
WV-DL-01@3'	Y202499-06	Soil	February 22, 2022 13:35	02/22/2022 16:26
TB-SS-01@0.5'	Y202499-07	Soil	February 22, 2022 13:00	02/22/2022 16:26
TB-SS-02@3'	Y202499-08	Soil	February 22, 2022 13:40	02/22/2022 16:26

Chain of Custody Modification Request

On 3/7/2022, Grace Congdon from Eagle Environmental contacted Jennifer Pellegrini via email regarding Y202499 requesting that sample ID TB-SS-01@5' be changed on chain of custody to TB-SS-01@0.5'.

Requested modifications to the chain of custody were made by Jordan Merrill on 3/7/2022.

Origins Laboratory, Inc.



The results in this report apply to the samples analyzed in accordance with the chain of custody document. This analytical report must be reproduced in its entirety.

Jordan A. Merrill, Project Manager

Project: Noble - Amigo 1, Fuego C1-19 Tank Battery

ORIGINS

LABORATORY, INC

www.originslaboratory.com

Client:

Eagle Environmental Consulting

Address:

8000 W 44th Ave, Lakewood
Ridge, CO, 80033

Telephone Number:

303-433-0479

Email Address:

mce300@eagle-enviro.com

1208409

page 1 of 1

Project Manager:

Martin Eckert III

Project Name:

Angel, Fugate-19 Tank Battery

Project Number:

—

Samples Collected By:

BPW/AH

Sample ID Description	Date Sampled	Time Sampled	Preservative				Matrix		Analysis	Sample Instructions
			Unpreserved	HCl	HNO ₃	Groundwater	Soil	Air Summ #		
WV-SS-01@4'	2-22-22	1250	X				X		X X X X X	EC, SAR, pH by 1
WV-SS-02@4'		1251								Saturated paste prep 2
WV-SS-03@4'		1252								3
WV-SS-04@4'		1253								MD's needed 4
WV-FS-01@5'		1254								5
WV-DL-01@3'		1335								6
TR-SS-01@5'		1300								7
TR-SS-02@3'		1340	Δ				Δ		Δ Δ Δ Δ	8
										9
										10
Relinquished By: <i>Boyle MW</i>	Date: 2/22/22	Time: 1626	Received By: <i>[Signature]</i>				Date: 2/22/22	Time: 1626	Turnaround Time: Same Day <input type="checkbox"/> 24 Hr <input type="checkbox"/> 48 Hr <input type="checkbox"/> Standard <input checked="" type="checkbox"/>	
Relinquished By:	Date:	Time:	Received By:				Date:	Time:		

150

AR Roll 1 of 1

Origins Laboratory, Inc.

Men

The results in this report apply to the samples analyzed in accordance with the chain of custody document. This analytical report must be reproduced in its entirety.

Eagle Environmental Consulting, Inc.

8000 W 44th Ave

Wheat Ridge CO 80033

Martin C Eckert III

Project Number: -

Project: Noble - Amigo 1, Fuego C1-19 Tank Battery

Origins Laboratory

F-012207-01-R1

Effective Date: 01/09/12

Sample Receipt Checklist

Origins Work Order: 4202499

Client: Eagle

Client Project ID: Amigo 1, Fuego C1-19 TB

Checklist Completed by: KH

Shipped Via: HD

(UPS, FedEx, Hand Delivered, Pick-up, etc.)

Date/time completed: 2/22/22

Airbill #: NA

Matrix(s) Received: (Check all that apply): ☒ Soil/Solid ☐ Water ☐ Other: _____

Cooler Number/Temperature: 1 / 1.5 °C 1 °C 1 °C (Describe) 1 °C

Thermometer ID: W05

Requirement Description	Yes	No	N/A	Comments (if any)
If samples require cooling, was the temperature between 0°C to ≤ 6°C ⁽¹⁾ ?	<input checked="" type="checkbox"/>	<input type="checkbox"/>	<input type="checkbox"/>	
Is there ice present (document if blue ice is used)	<input checked="" type="checkbox"/>	<input type="checkbox"/>	<input type="checkbox"/>	
Are custody seals present on cooler? (if so, document in comments if they are signed and dated, broken or intact)	<input type="checkbox"/>	<input checked="" type="checkbox"/>	<input type="checkbox"/>	
Are custody seals present on each sample container? (if so, document in comments if they are signed and dated, broken or intact)	<input type="checkbox"/>	<input checked="" type="checkbox"/>	<input type="checkbox"/>	
Were all samples received intact ⁽¹⁾ ?	<input checked="" type="checkbox"/>	<input type="checkbox"/>	<input type="checkbox"/>	
Was adequate sample volume provided ⁽¹⁾ ?	<input checked="" type="checkbox"/>	<input type="checkbox"/>	<input type="checkbox"/>	
Are short holding time analytes or samples with HTs due within 48 hours present ⁽¹⁾ ?	<input type="checkbox"/>	<input checked="" type="checkbox"/>	<input type="checkbox"/>	
Is a chain-of-custody (COC) present and filled out completely ⁽¹⁾ ?	<input checked="" type="checkbox"/>	<input type="checkbox"/>	<input type="checkbox"/>	
Does the COC agree with the number and type of sample bottles received ⁽¹⁾ ?	<input checked="" type="checkbox"/>	<input type="checkbox"/>	<input type="checkbox"/>	
Do the sample IDs on the bottle labels match the COC ⁽¹⁾ ?	<input checked="" type="checkbox"/>	<input type="checkbox"/>	<input type="checkbox"/>	
Is the COC properly relinquished by the client with date and time recorded ⁽¹⁾ ?	<input checked="" type="checkbox"/>	<input type="checkbox"/>	<input type="checkbox"/>	
For volatiles in water – is there headspace (> ¼ inch bubble) present? If yes, contact client and note in narrative.	<input type="checkbox"/>	<input type="checkbox"/>	<input checked="" type="checkbox"/>	
Are samples preserved that require preservation and was it checked ⁽¹⁾ ? (note ID of confirmation instrument used in comments) / (preservation is not confirmed for subcontracted analyses in order to insure sample integrity)/pH <2 for samples preserved with HNO ₃ , HCL, H ₂ SO ₄ / (pH >10 for samples preserved with NaAsO ₂ +NaOH, ZnAc+NaOH)	<input type="checkbox"/>	<input type="checkbox"/>	<input checked="" type="checkbox"/>	
Additional Comments (if any):				

⁽¹⁾ If NO, then contact the client before proceeding with analysis and note date/time and person contacted as well as the corrective action to in the additional comments (above) and the case narrative.

Reviewed by (Project Manager) [Signature]

Date/Time Reviewed 2/23/22

Origins Laboratory, Inc.

[Signature]

The results in this report apply to the samples analyzed in accordance with the chain of custody document. This analytical report must be reproduced in its entirety.

Eagle Environmental Consulting, Inc.
8000 W 44th Ave
Wheat Ridge CO 80033

Martin C Eckert III
Project Number: -
Project: Noble - Amigo 1, Fuego C1-19 Tank Battery

WV-SS-01@4'

2/22/2022 12:50:00PM

Analyte	Result	Min Detection Limit	Reporting Limit	Units	Dilution	Batch	Prepared	Analyzed	Notes
---------	--------	---------------------	-----------------	-------	----------	-------	----------	----------	-------

Origins Laboratory, Inc.
Y202499-01 (Soil)

Boron (DTPA Sorbitol)

Boron	0.725	0.101	mg/L	1	B2B2309	02/23/2022	02/24/2022
-------	-------	-------	------	---	---------	------------	------------

DRO/ORO by EPA 8015D

Diesel (C10-C28)	81.6	25.0	mg/kg	1	B2B2401	02/24/2022	03/01/2022
Residual Range Organics (C28-C40)	ND	100	"	"	"	"	U

Surrogate: o-Terphenyl	105 %	50-150	"	"	"
------------------------	-------	--------	---	---	---

GBTEX+TMBs by 8260D

1,2,4-Trimethylbenzene	0.00344	0.00200	mg/kg	1	B2B2404	02/24/2022	02/26/2022
1,3,5-Trimethylbenzene	0.0198	0.00200	"	"	"	"	"
Benzene	ND	0.00200	"	"	"	"	U
Ethylbenzene	ND	0.00200	"	"	"	"	U
Toluene	ND	0.00200	"	"	"	"	U
Xylenes, total	ND	0.00200	"	"	"	"	U
Gasoline Range Hydrocarbons	1.69	0.200	"	"	"	"	"

Surrogate: 1,2-Dichloroethane-d4	112 %	70-130	"	"	"
Surrogate: Toluene-d8	96.8 %	70-130	"	"	"

Origins Laboratory, Inc.



The results in this report apply to the samples analyzed in accordance with the chain of custody document. This analytical report must be reproduced in its entirety.

Eagle Environmental Consulting, Inc.
8000 W 44th Ave
Wheat Ridge CO 80033

Martin C Eckert III
Project Number: -
Project: Noble - Amigo 1, Fuego C1-19 Tank Battery

WV-SS-01@4'

2/22/2022 12:50:00PM

Analyte	Result	Min Detection Limit	Reporting Limit	Units	Dilution	Batch	Prepared	Analyzed	Notes
---------	--------	---------------------	-----------------	-------	----------	-------	----------	----------	-------

Origins Laboratory, Inc.
Y202499-01 (Soil)

GBTEX+TMBs by 8260D

Surrogate: 4-Bromofluorobenzene 107 % 70-130 B2B24 04 02/24/2022 02/26/2022

Metals by Saturated Paste by EPA 6010

Calcium	2.61	0.499	meq/L	10	[CALC]	02/23/2022	02/24/2022
Magnesium	1.75	0.823	"	"	"	"	"
Sodium	6.78	0.435	"	"	"	"	"

PAH by 8270D SIM

1-Methylnaphthalene	0.0524	0.000364	0.00067	mg/Kg	1	L601980	02/28/2022	02/28/2022
2-Methylnaphthalene	0.0905	0.000645	0.00067	"	"	"	"	"
Acenaphthene	0.00802	0.000304	0.00067	"	"	"	"	"
Anthracene	0.000556	0.000334	0.00067	"	"	"	"	" J
Benzo(a)anthracene	ND	0.000493	0.00067	"	"	"	"	"
Benzo(a)pyrene	ND	0.000468	0.00067	"	"	"	"	"
Benzo(b)fluoranthene	ND	0.000585	0.00067	"	"	"	"	"
Benzo(k)fluoranthene	ND	0.000437	0.00067	"	"	"	"	"
Chrysene	0.00551	0.000624	0.00067	"	"	"	"	"
Dibenz(a,h)anthracene	ND	0.000614	0.00067	"	"	"	"	"
Fluoranthene	0.000604	0.000394	0.00067	"	"	"	"	" J
Fluorene	0.0185	0.000286	0.00067	"	"	"	"	"
Indeno(1,2,3-cd)pyrene	ND	0.000627	0.00067	"	"	"	"	"

Origins Laboratory, Inc.



The results in this report apply to the samples analyzed in accordance with the chain of custody document. This analytical report must be reproduced in its entirety.

Eagle Environmental Consulting, Inc.
8000 W 44th Ave
Wheat Ridge CO 80033

Martin C Eckert III
Project Number: -
Project: Noble - Amigo 1, Fuego C1-19 Tank Battery

WV-SS-01@4'

2/22/2022 12:50:00PM

Analyte	Result	Min Detection Limit	Reporting Limit	Units	Dilution	Batch	Prepared	Analyzed	Notes
---------	--------	---------------------	-----------------	-------	----------	-------	----------	----------	-------

Waypoint Analytical, Inc.
Y202499-01 (Soil)

PAH by 8270D SIM

Naphthalene	0.019	0.000484	0.00067	mg/Kg	1	L601980	02/28/2022	02/28/2022	
Pyrene	0.00255	0.000643	0.00067	"	"	"	"	"	

Surrogate: 2-Fluorobiphenyl	52.7 %		33-115			"	"	"	
Surrogate: 4-Terphenyl-d14	67.7 %		33-122			"	"	"	
Surrogate: Nitrobenzene-d5	52.1 %		29-110			"	"	"	

pH in Soil by 9045D

pH	8.03			pH Units	1	B2B2311	02/23/2022	02/24/2022	
----	------	--	--	----------	---	---------	------------	------------	--

SAR by 20B Saturated Paste

SAR	4.59			SAR	1	B2B2307	02/23/2022	02/24/2022	
-----	------	--	--	-----	---	---------	------------	------------	--

Specific Conductance Mod. 9050A

Specific Conductance (EC)	1.28		0.00500	mmhos/cm	1	B2B2313	02/23/2022	02/24/2022	
---------------------------	------	--	---------	----------	---	---------	------------	------------	--

Total Metals by 6020B

Arsenic	4.3	0.0855	0.25	mg/Kg	5	L601932	02/28/2022	03/05/2022	
Barium	111	0.042	0.25	"	"	"	"	"	
Cadmium	0.187	0.0259	0.25	"	"	"	"	"	J

Origins Laboratory, Inc.



The results in this report apply to the samples analyzed in accordance with the chain of custody document. This analytical report must be reproduced in its entirety.

Eagle Environmental Consulting, Inc.
8000 W 44th Ave
Wheat Ridge CO 80033

Martin C Eckert III
Project Number: -
Project: Noble - Amigo 1, Fuego C1-19 Tank Battery

WV-SS-01@4'

2/22/2022 12:50:00PM

Analyte	Result	Min Detection Limit	Reporting Limit	Units	Dilution	Batch	Prepared	Analyzed	Notes
---------	--------	---------------------	-----------------	-------	----------	-------	----------	----------	-------

Waypoint Analytical, Inc.
Y202499-01 (Soil)

Total Metals by 6020B

Copper	12.5	0.0806	0.25	mg/Kg	5	L601932	02/28/2022	03/05/2022	
Lead	10.3	0.031	0.25	"	"	"	"	"	
Nickel	11.6	0.0633	0.25	"	"	"	"	"	
Selenium	0.566	0.103	0.25	"	"	"	"	"	
Silver	0.0495	0.0067	0.25	"	"	"	"	"	J
Zinc	49.7	0.534	2.5	"	"	"	"	"	

Total Metals by 7196A

Chromium, Hexavalent	ND	0.492	1.01	mg/Kg	2	L602872	02/22/2022	03/04/2022	
----------------------	----	-------	------	-------	---	---------	------------	------------	--

Origins Laboratory, Inc.



The results in this report apply to the samples analyzed in accordance with the chain of custody document. This analytical report must be reproduced in its entirety.

Eagle Environmental Consulting, Inc.
8000 W 44th Ave
Wheat Ridge CO 80033

Martin C Eckert III
Project Number: -
Project: Noble - Amigo 1, Fuego C1-19 Tank
Battery

WV-SS-02@4'

2/22/2022 12:51:00PM

Analyte	Result	Min Detection Limit	Reporting Limit	Units	Dilution	Batch	Prepared	Analyzed	Notes
---------	--------	------------------------	--------------------	-------	----------	-------	----------	----------	-------

Origins Laboratory, Inc.
Y202499-02 (Soil)

Boron (DTPA Sorbitol)

Boron	0.296	0.0986	mg/L	1	B2B2309	02/23/2022	02/24/2022	
-------	-------	--------	------	---	---------	------------	------------	--

DRO/ORO by EPA 8015D

Diesel (C10-C28)	ND	25.0	mg/kg	1	B2B2401	02/24/2022	03/01/2022	U
Residual Range Organics (C28-C40)	ND	100	"	"	"	"	"	U

Surrogate: o-Terphenyl	99.5 %	50-150			"	"	"	
------------------------	--------	--------	--	--	---	---	---	--

GBTEX+TMBs by 8260D

1,2,4-Trimethylbenzene	ND	0.00200	mg/kg	1	B2B2404	02/24/2022	02/26/2022	U
1,3,5-Trimethylbenzene	ND	0.00200	"	"	"	"	"	U
Benzene	ND	0.00200	"	"	"	"	"	U
Ethylbenzene	ND	0.00200	"	"	"	"	"	U
Toluene	ND	0.00200	"	"	"	"	"	U
Xylenes, total	ND	0.00200	"	"	"	"	"	U
Gasoline Range Hydrocarbons	0.442	0.200	"	"	"	"	"	

Surrogate: 1,2-Dichloroethane-d4	110 %	70-130			"	"	"	
Surrogate: Toluene-d8	97.2 %	70-130			"	"	"	

Origins Laboratory, Inc.



The results in this report apply to the samples analyzed in accordance with the chain of custody document. This analytical report must be reproduced in its entirety.

Eagle Environmental Consulting, Inc.
8000 W 44th Ave
Wheat Ridge CO 80033

Martin C Eckert III
Project Number: -
Project: Noble - Amigo 1, Fuego C1-19 Tank Battery

WV-SS-02@4'

2/22/2022 12:51:00PM

Analyte	Result	Min Detection Limit	Reporting Limit	Units	Dilution	Batch	Prepared	Analyzed	Notes
---------	--------	---------------------	-----------------	-------	----------	-------	----------	----------	-------

Origins Laboratory, Inc.
Y202499-02 (Soil)

GBTEX+TMBs by 8260D

Surrogate: 4-Bromofluorobenzene 104 % 70-130 B2B24 04 02/24/2022 02/26/2022

Metals by Saturated Paste by EPA 6010

Calcium	1.44	0.499	meq/L	10	[CALC]	02/23/2022	02/24/2022
Magnesium	ND	0.823	"	"	"	"	"
Sodium	1.91	0.435	"	"	"	"	"

PAH by 8270D SIM

1-Methylnaphthalene	0.0155	0.000364	0.00067	mg/Kg	1	L601980	02/28/2022	02/28/2022
2-Methylnaphthalene	0.0286	0.000645	0.00067	"	"	"	"	"
Acenaphthene	0.00201	0.000304	0.00067	"	"	"	"	"
Anthracene	ND	0.000334	0.00067	"	"	"	"	"
Benzo(a)anthracene	ND	0.000493	0.00067	"	"	"	"	"
Benzo(a)pyrene	ND	0.000468	0.00067	"	"	"	"	"
Benzo(b)fluoranthene	ND	0.000585	0.00067	"	"	"	"	"
Benzo(k)fluoranthene	ND	0.000437	0.00067	"	"	"	"	"
Chrysene	0.00159	0.000624	0.00067	"	"	"	"	"
Dibenz(a,h)anthracene	ND	0.000614	0.00067	"	"	"	"	"
Fluoranthene	0.00047	0.000394	0.00067	"	"	"	"	"
Fluorene	0.00419	0.000286	0.00067	"	"	"	"	"
Indeno(1,2,3-cd)pyrene	ND	0.000627	0.00067	"	"	"	"	"

Origins Laboratory, Inc.



The results in this report apply to the samples analyzed in accordance with the chain of custody document. This analytical report must be reproduced in its entirety.

Eagle Environmental Consulting, Inc.
8000 W 44th Ave
Wheat Ridge CO 80033

Martin C Eckert III
Project Number: -
Project: Noble - Amigo 1, Fuego C1-19 Tank Battery

WV-SS-02@4'

2/22/2022 12:51:00PM

Analyte	Result	Min Detection Limit	Reporting Limit	Units	Dilution	Batch	Prepared	Analyzed	Notes
---------	--------	---------------------	-----------------	-------	----------	-------	----------	----------	-------

Waypoint Analytical, Inc.
Y202499-02 (Soil)

PAH by 8270D SIM

Naphthalene	0.00656	0.000484	0.00067	mg/Kg	1	L601980	02/28/2022	02/28/2022	
Pyrene	0.000918	0.000643	0.00067	"	"	"	"	"	

Surrogate: 2-Fluorobiphenyl	56.8 %		33-115			"	"	"	
Surrogate: 4-Terphenyl-d14	58.1 %		33-122			"	"	"	
Surrogate: Nitrobenzene-d5	46.8 %		29-110			"	"	"	

pH in Soil by 9045D

pH	8.25			pH Units	1	B2B2311	02/23/2022	02/24/2022	
----	------	--	--	----------	---	---------	------------	------------	--

SAR by 20B Saturated Paste

SAR	1.80			SAR	1	B2B2307	02/23/2022	02/24/2022	
-----	------	--	--	-----	---	---------	------------	------------	--

Specific Conductance Mod. 9050A

Specific Conductance (EC)	0.442		0.00500	mmhos/cm	1	B2B2313	02/23/2022	02/24/2022	
---------------------------	-------	--	---------	----------	---	---------	------------	------------	--

Origins Laboratory, Inc.



The results in this report apply to the samples analyzed in accordance with the chain of custody document. This analytical report must be reproduced in its entirety.

Eagle Environmental Consulting, Inc.
8000 W 44th Ave
Wheat Ridge CO 80033

Martin C Eckert III
Project Number: -
Project: Noble - Amigo 1, Fuego C1-19 Tank Battery

WV-SS-03@4'

2/22/2022 12:52:00PM

Analyte	Result	Min Detection Limit	Reporting Limit	Units	Dilution	Batch	Prepared	Analyzed	Notes
---------	--------	---------------------	-----------------	-------	----------	-------	----------	----------	-------

Origins Laboratory, Inc.
Y202499-03 (Soil)

Boron (DTPA Sorbitol)

Boron	0.855	0.0994	mg/L	1	B2B2309	02/23/2022	02/24/2022	
-------	-------	--------	------	---	---------	------------	------------	--

DRO/ORO by EPA 8015D

Diesel (C10-C28)	ND	25.0	mg/kg	1	B2B2401	02/24/2022	03/01/2022	U
Residual Range Organics (C28-C40)	ND	100	"	"	"	"	"	U

Surrogate: o-Terphenyl	79.7 %	50-150			"	"	"
------------------------	--------	--------	--	--	---	---	---

GBTEX+TMBs by 8260D

1,2,4-Trimethylbenzene	ND	0.00200	mg/kg	1	B2B2404	02/24/2022	02/26/2022	U
1,3,5-Trimethylbenzene	ND	0.00200	"	"	"	"	"	U
Benzene	ND	0.00200	"	"	"	"	"	U
Ethylbenzene	ND	0.00200	"	"	"	"	"	U
Toluene	ND	0.00200	"	"	"	"	"	U
Xylenes, total	ND	0.00200	"	"	"	"	"	U
Gasoline Range Hydrocarbons	ND	0.200	"	"	"	"	"	U

Surrogate: 1,2-Dichloroethane-d4	112 %	70-130			"	"	"
----------------------------------	-------	--------	--	--	---	---	---

Origins Laboratory, Inc.



The results in this report apply to the samples analyzed in accordance with the chain of custody document. This analytical report must be reproduced in its entirety.

Eagle Environmental Consulting, Inc.
8000 W 44th Ave
Wheat Ridge CO 80033

Martin C Eckert III
Project Number: -
Project: Noble - Amigo 1, Fuego C1-19 Tank Battery

WV-SS-03@4'

2/22/2022 12:52:00PM

Analyte	Result	Min Detection Limit	Reporting Limit	Units	Dilution	Batch	Prepared	Analyzed	Notes
---------	--------	---------------------	-----------------	-------	----------	-------	----------	----------	-------

Origins Laboratory, Inc.
Y202499-03 (Soil)

GBTEX+TMBs by 8260D

Surrogate: Toluene-d8	96.8 %	70-130	B2B24 04	02/24/2022	02/26/2022
Surrogate: 4-Bromofluorobenzene	101 %	70-130	"	"	"

Metals by Saturated Paste by EPA 6010

Calcium	1.59	0.499	meq/L	10	[CALC]	02/23/2022	02/24/2022
Magnesium	0.831	0.823	"	"	"	"	"
Sodium	1.32	0.435	"	"	"	"	"

PAH by 8270D SIM

1-Methylnaphthalene	0.00221	0.000364	0.00067	mg/Kg	1	L601980	02/28/2022	02/28/2022
2-Methylnaphthalene	0.00363	0.000645	0.00067	"	"	"	"	"
Acenaphthene	ND	0.000304	0.00067	"	"	"	"	"
Anthracene	ND	0.000334	0.00067	"	"	"	"	"
Benzo(a)anthracene	ND	0.000493	0.00067	"	"	"	"	"
Benzo(a)pyrene	ND	0.000468	0.00067	"	"	"	"	"
Benzo(b)fluoranthene	ND	0.000585	0.00067	"	"	"	"	"
Benzo(k)fluoranthene	ND	0.000437	0.00067	"	"	"	"	"
Chrysene	ND	0.000624	0.00067	"	"	"	"	"
Dibenz(a,h)anthracene	ND	0.000614	0.00067	"	"	"	"	"
Fluoranthene	ND	0.000394	0.00067	"	"	"	"	"
Fluorene	0.000542	0.000286	0.00067	"	"	"	"	"

J

Origins Laboratory, Inc.



The results in this report apply to the samples analyzed in accordance with the chain of custody document. This analytical report must be reproduced in its entirety.

Eagle Environmental Consulting, Inc.
8000 W 44th Ave
Wheat Ridge CO 80033

Martin C Eckert III
Project Number: -
Project: Noble - Amigo 1, Fuego C1-19 Tank Battery

WV-SS-03@4'

2/22/2022 12:52:00PM

Analyte	Result	Min Detection Limit	Reporting Limit	Units	Dilution	Batch	Prepared	Analyzed	Notes
---------	--------	---------------------	-----------------	-------	----------	-------	----------	----------	-------

Waypoint Analytical, Inc.
Y202499-03 (Soil)

PAH by 8270D SIM

Indeno(1,2,3-cd)pyrene	ND	0.000627	0.00067	mg/Kg	1	L601980	02/28/2022	02/28/2022
Naphthalene	0.00103	0.000484	0.00067	"	"	"	"	"
Pyrene	ND	0.000643	0.00067	"	"	"	"	"

Surrogate: 2-Fluorobiphenyl	63.6 %		33-115			"	"	"
Surrogate: 4-Terphenyl-d14	69 %		33-122			"	"	"
Surrogate: Nitrobenzene-d5	52.4 %		29-110			"	"	"

pH in Soil by 9045D

pH	8.21			pH Units	1	B2B2311	02/23/2022	02/24/2022
----	------	--	--	----------	---	---------	------------	------------

SAR by 20B Saturated Paste

SAR	1.20			SAR	1	B2B2307	02/23/2022	02/24/2022
-----	------	--	--	-----	---	---------	------------	------------

Specific Conductance Mod. 9050A

Specific Conductance (EC)	0.390		0.00500	mmhos/cm	1	B2B2313	02/23/2022	02/24/2022
---------------------------	-------	--	---------	----------	---	---------	------------	------------

Origins Laboratory, Inc.



The results in this report apply to the samples analyzed in accordance with the chain of custody document. This analytical report must be reproduced in its entirety.

Eagle Environmental Consulting, Inc.
8000 W 44th Ave
Wheat Ridge CO 80033

Martin C Eckert III
Project Number: -
Project: Noble - Amigo 1, Fuego C1-19 Tank
Battery

WV-SS-04@4'

2/22/2022 12:53:00PM

Analyte	Result	Min Detection Limit	Reporting Limit	Units	Dilution	Batch	Prepared	Analyzed	Notes
---------	--------	---------------------	-----------------	-------	----------	-------	----------	----------	-------

Origins Laboratory, Inc.
Y202499-04 (Soil)

Boron (DTPA Sorbitol)

Boron	0.557	0.0994	mg/L	1	B2B2309	02/23/2022	02/24/2022	
-------	-------	--------	------	---	---------	------------	------------	--

DRO/ORO by EPA 8015D

Diesel (C10-C28)	ND	25.0	mg/kg	1	B2B2401	02/24/2022	03/01/2022	U
Residual Range Organics (C28-C40)	ND	100	"	"	"	"	"	U

Surrogate: o-Terphenyl	101 %	50-150			"	"	"
------------------------	-------	--------	--	--	---	---	---

GBTEX+TMBs by 8260D

1,2,4-Trimethylbenzene	ND	0.00200	mg/kg	1	B2B2404	02/24/2022	02/26/2022	U
1,3,5-Trimethylbenzene	ND	0.00200	"	"	"	"	"	U
Benzene	ND	0.00200	"	"	"	"	"	U
Ethylbenzene	ND	0.00200	"	"	"	"	"	U
Toluene	ND	0.00200	"	"	"	"	"	U
Xylenes, total	ND	0.00200	"	"	"	"	"	U
Gasoline Range Hydrocarbons	ND	0.200	"	"	"	"	"	U

Surrogate: 1,2-Dichloroethane-d4	111 %	70-130			"	"	"
----------------------------------	-------	--------	--	--	---	---	---

Origins Laboratory, Inc.



The results in this report apply to the samples analyzed in accordance with the chain of custody document. This analytical report must be reproduced in its entirety.

Eagle Environmental Consulting, Inc.
8000 W 44th Ave
Wheat Ridge CO 80033

Martin C Eckert III
Project Number: -
Project: Noble - Amigo 1, Fuego C1-19 Tank Battery

WV-SS-04@4'

2/22/2022 12:53:00PM

Analyte	Result	Min Detection Limit	Reporting Limit	Units	Dilution	Batch	Prepared	Analyzed	Notes
---------	--------	---------------------	-----------------	-------	----------	-------	----------	----------	-------

Origins Laboratory, Inc.
Y202499-04 (Soil)

GBTEX+TMBs by 8260D

Surrogate: Toluene-d8	97.5 %	70-130				B2B24 04	02/24/2022	02/26/2022	
Surrogate: 4-Bromofluorobenzene	101 %	70-130				"	"	"	

Metals by Saturated Paste by EPA 6010

Calcium	3.23	0.499	meq/L	10	[CALC]	02/23/2022	02/24/2022	
Magnesium	1.35	0.823	"	"	"	"	"	
Sodium	2.23	0.435	"	"	"	"	"	

PAH by 8270D SIM

1-Methylnaphthalene	0.000673	0.000364	0.00067	mg/Kg	1	L601980	02/28/2022	02/28/2022	
2-Methylnaphthalene	0.00109	0.000645	0.00067	"	"	"	"	"	
Acenaphthene	ND	0.000304	0.00067	"	"	"	"	"	
Anthracene	ND	0.000334	0.00067	"	"	"	"	"	
Benzo(a)anthracene	ND	0.000493	0.00067	"	"	"	"	"	
Benzo(a)pyrene	ND	0.000468	0.00067	"	"	"	"	"	
Benzo(b)fluoranthene	ND	0.000585	0.00067	"	"	"	"	"	
Benzo(k)fluoranthene	ND	0.000437	0.00067	"	"	"	"	"	
Chrysene	ND	0.000624	0.00067	"	"	"	"	"	
Dibenz(a,h)anthracene	ND	0.000614	0.00067	"	"	"	"	"	
Fluoranthene	ND	0.000394	0.00067	"	"	"	"	"	

Origins Laboratory, Inc.



The results in this report apply to the samples analyzed in accordance with the chain of custody document. This analytical report must be reproduced in its entirety.

Eagle Environmental Consulting, Inc.
8000 W 44th Ave
Wheat Ridge CO 80033

Martin C Eckert III
Project Number: -
Project: Noble - Amigo 1, Fuego C1-19 Tank Battery

WV-SS-04@4'

2/22/2022 12:53:00PM

Analyte	Result	Min Detection Limit	Reporting Limit	Units	Dilution	Batch	Prepared	Analyzed	Notes
---------	--------	---------------------	-----------------	-------	----------	-------	----------	----------	-------

Waypoint Analytical, Inc.
Y202499-04 (Soil)

PAH by 8270D SIM

Fluorene	ND	0.000286	0.00067	mg/Kg	1	L601980	02/28/2022	02/28/2022
Indeno(1,2,3-cd)pyrene	ND	0.000627	0.00067	"	"	"	"	"
Naphthalene	ND	0.000484	0.00067	"	"	"	"	"
Pyrene	ND	0.000643	0.00067	"	"	"	"	"

Surrogate: 2-Fluorobiphenyl	60.7 %	33-115	"	"	"
Surrogate: 4-Terphenyl-d14	62.5 %	33-122	"	"	"
Surrogate: Nitrobenzene-d5	45.9 %	29-110	"	"	"

pH in Soil by 9045D

pH	7.91	pH Units	1	B2B2311	02/23/2022	02/24/2022
----	------	----------	---	---------	------------	------------

SAR by 20B Saturated Paste

SAR	1.47	SAR	1	B2B2307	02/23/2022	02/24/2022
-----	------	-----	---	---------	------------	------------

Specific Conductance Mod. 9050A

Specific Conductance (EC)	0.775	0.00500	mmhos/cm	1	B2B2313	02/23/2022	02/24/2022
---------------------------	-------	---------	----------	---	---------	------------	------------

Origins Laboratory, Inc.



The results in this report apply to the samples analyzed in accordance with the chain of custody document. This analytical report must be reproduced in its entirety.

Eagle Environmental Consulting, Inc.
8000 W 44th Ave
Wheat Ridge CO 80033

Martin C Eckert III
Project Number: -
Project: Noble - Amigo 1, Fuego C1-19 Tank Battery

WV-FS-01@5'

2/22/2022 12:54:00PM

Analyte	Result	Min Detection Limit	Reporting Limit	Units	Dilution	Batch	Prepared	Analyzed	Notes
---------	--------	---------------------	-----------------	-------	----------	-------	----------	----------	-------

Origins Laboratory, Inc.
Y202499-05 (Soil)

Boron (DTPA Sorbitol)

Boron	0.556	0.0993	mg/L	1	B2B2309	02/23/2022	02/24/2022	
-------	-------	--------	------	---	---------	------------	------------	--

DRO/ORO by EPA 8015D

Diesel (C10-C28)	ND	25.0	mg/kg	1	B2B2401	02/24/2022	03/01/2022	U
Residual Range Organics (C28-C40)	ND	100	"	"	"	"	"	U

Surrogate: o-Terphenyl	96.2 %	50-150			"	"	"	
------------------------	--------	--------	--	--	---	---	---	--

GBTEX+TMBs by 8260D

1,2,4-Trimethylbenzene	ND	0.00200	mg/kg	1	B2B2404	02/24/2022	02/26/2022	U
1,3,5-Trimethylbenzene	ND	0.00200	"	"	"	"	"	U
Benzene	ND	0.00200	"	"	"	"	"	U
Ethylbenzene	ND	0.00200	"	"	"	"	"	U
Toluene	ND	0.00200	"	"	"	"	"	U
Xylenes, total	ND	0.00200	"	"	"	"	"	U
Gasoline Range Hydrocarbons	ND	0.200	"	"	"	"	"	U

Surrogate: 1,2-Dichloroethane-d4	113 %	70-130			"	"	"	
----------------------------------	-------	--------	--	--	---	---	---	--

Origins Laboratory, Inc.



The results in this report apply to the samples analyzed in accordance with the chain of custody document. This analytical report must be reproduced in its entirety.

Eagle Environmental Consulting, Inc.
8000 W 44th Ave
Wheat Ridge CO 80033

Martin C Eckert III
Project Number: -
Project: Noble - Amigo 1, Fuego C1-19 Tank Battery

WV-FS-01@5'

2/22/2022 12:54:00PM

Analyte	Result	Min Detection Limit	Reporting Limit	Units	Dilution	Batch	Prepared	Analyzed	Notes
---------	--------	---------------------	-----------------	-------	----------	-------	----------	----------	-------

Origins Laboratory, Inc.
Y202499-05 (Soil)

GBTEX+TMBs by 8260D

Surrogate: Toluene-d8	97.1 %	70-130	B2B24 04	02/24/2022	02/26/2022
Surrogate: 4-Bromofluorobenzene	101 %	70-130	"	"	"

Metals by Saturated Paste by EPA 6010

Calcium	1.70	0.499	meq/L	10	[CALC]	02/23/2022	02/24/2022
Magnesium	ND	0.823	"	"	"	"	"
Sodium	1.15	0.435	"	"	"	"	"

PAH by 8270D SIM

1-Methylnaphthalene	ND	0.000364	0.00067	mg/Kg	1	L601980	02/28/2022	02/28/2022
2-Methylnaphthalene	ND	0.000645	0.00067	"	"	"	"	"
Acenaphthene	ND	0.000304	0.00067	"	"	"	"	"
Anthracene	ND	0.000334	0.00067	"	"	"	"	"
Benzo(a)anthracene	ND	0.000493	0.00067	"	"	"	"	"
Benzo(a)pyrene	ND	0.000468	0.00067	"	"	"	"	"
Benzo(b)fluoranthene	ND	0.000585	0.00067	"	"	"	"	"
Benzo(k)fluoranthene	ND	0.000437	0.00067	"	"	"	"	"
Chrysene	ND	0.000624	0.00067	"	"	"	"	"
Dibenz(a,h)anthracene	ND	0.000614	0.00067	"	"	"	"	"
Fluoranthene	ND	0.000394	0.00067	"	"	"	"	"

Origins Laboratory, Inc.



The results in this report apply to the samples analyzed in accordance with the chain of custody document. This analytical report must be reproduced in its entirety.

Eagle Environmental Consulting, Inc.
8000 W 44th Ave
Wheat Ridge CO 80033

Martin C Eckert III
Project Number: -
Project: Noble - Amigo 1, Fuego C1-19 Tank Battery

WV-FS-01@5'

2/22/2022 12:54:00PM

Analyte	Result	Min Detection Limit	Reporting Limit	Units	Dilution	Batch	Prepared	Analyzed	Notes
---------	--------	---------------------	-----------------	-------	----------	-------	----------	----------	-------

Waypoint Analytical, Inc.
Y202499-05 (Soil)

PAH by 8270D SIM

Fluorene	ND	0.000286	0.00067	mg/Kg	1	L601980	02/28/2022	02/28/2022
Indeno(1,2,3-cd)pyrene	ND	0.000627	0.00067	"	"	"	"	"
Naphthalene	ND	0.000484	0.00067	"	"	"	"	"
Pyrene	ND	0.000643	0.00067	"	"	"	"	"

Surrogate: 2-Fluorobiphenyl	66.3 %	33-115	"	"	"
Surrogate: 4-Terphenyl-d14	65.4 %	33-122	"	"	"
Surrogate: Nitrobenzene-d5	51.8 %	29-110	"	"	"

pH in Soil by 9045D

pH	8.08	pH Units	1	B2B2311	02/23/2022	02/24/2022
----	------	----------	---	---------	------------	------------

SAR by 20B Saturated Paste

SAR	1.02	SAR	1	B2B2307	02/23/2022	02/24/2022
-----	------	-----	---	---------	------------	------------

Specific Conductance Mod. 9050A

Specific Conductance (EC)	0.403	0.00500	mmhos/cm	1	B2B2313	02/23/2022	02/24/2022
---------------------------	-------	---------	----------	---	---------	------------	------------

Origins Laboratory, Inc.



The results in this report apply to the samples analyzed in accordance with the chain of custody document. This analytical report must be reproduced in its entirety.

Eagle Environmental Consulting, Inc.
8000 W 44th Ave
Wheat Ridge CO 80033

Martin C Eckert III
Project Number: -
Project: Noble - Amigo 1, Fuego C1-19 Tank
Battery

WV-DL-01@3'
2/22/2022 1:35:00PM

Analyte	Result	Min Detection Limit	Reporting Limit	Units	Dilution	Batch	Prepared	Analyzed	Notes
---------	--------	------------------------	--------------------	-------	----------	-------	----------	----------	-------

Origins Laboratory, Inc.
Y202499-06 (Soil)

Boron (DTPA Sorbitol)

Boron	0.880	0.100	mg/L	1	B2B2309	02/23/2022	02/24/2022	
-------	-------	-------	------	---	---------	------------	------------	--

DRO/ORO by EPA 8015D

Diesel (C10-C28)	ND	25.0	mg/kg	1	B2B2401	02/24/2022	03/01/2022	U
Residual Range Organics (C28-C40)	ND	100	"	"	"	"	"	U

Surrogate: o-Terphenyl	98.2 %	50-150	"	"	"	"	"
------------------------	--------	--------	---	---	---	---	---

GBTEX+TMBs by 8260D

1,2,4-Trimethylbenzene	ND	0.00200	mg/kg	1	B2B2404	02/24/2022	02/26/2022	U
1,3,5-Trimethylbenzene	ND	0.00200	"	"	"	"	"	U
Benzene	ND	0.00200	"	"	"	"	"	U
Ethylbenzene	ND	0.00200	"	"	"	"	"	U
Toluene	ND	0.00200	"	"	"	"	"	U
Xylenes, total	ND	0.00200	"	"	"	"	"	U
Gasoline Range Hydrocarbons	ND	0.200	"	"	"	"	"	U

Surrogate: 1,2-Dichloroethane-d4	111 %	70-130	"	"	"	"	"
----------------------------------	-------	--------	---	---	---	---	---

Origins Laboratory, Inc.



The results in this report apply to the samples analyzed in accordance with the chain of custody document. This analytical report must be reproduced in its entirety.

Eagle Environmental Consulting, Inc.
8000 W 44th Ave
Wheat Ridge CO 80033

Martin C Eckert III
Project Number: -
Project: Noble - Amigo 1, Fuego C1-19 Tank Battery

WV-DL-01@3'
2/22/2022 1:35:00PM

Analyte	Result	Min Detection Limit	Reporting Limit	Units	Dilution	Batch	Prepared	Analyzed	Notes
---------	--------	---------------------	-----------------	-------	----------	-------	----------	----------	-------

Origins Laboratory, Inc.
Y202499-06 (Soil)

GBTEX+TMBs by 8260D

Surrogate: Toluene-d8	97.5 %	70-130	B2B24 04	02/24/2022	02/26/2022
Surrogate: 4-Bromofluorobenzene	101 %	70-130	"	"	"

Metals by Saturated Paste by EPA 6010

Calcium	1.87	0.499	meq/L	10	[CALC]	02/23/2022	02/24/2022
Magnesium	ND	0.823	"	"	"	"	"
Sodium	1.22	0.435	"	"	"	"	"

PAH by 8270D SIM

1-Methylnaphthalene	0.0228	0.000364	0.00067	mg/Kg	1	L601980	02/28/2022	02/28/2022	
2-Methylnaphthalene	0.0307	0.000645	0.00067	"	"	"	"	"	
Acenaphthene	0.00433	0.000304	0.00067	"	"	"	"	"	
Anthracene	0.000391	0.000334	0.00067	"	"	"	"	"	J
Benzo(a)anthracene	ND	0.000493	0.00067	"	"	"	"	"	
Benzo(a)pyrene	0.000499	0.000468	0.00067	"	"	"	"	"	J
Benzo(b)fluoranthene	ND	0.000585	0.00067	"	"	"	"	"	
Benzo(k)fluoranthene	ND	0.000437	0.00067	"	"	"	"	"	
Chrysene	0.00476	0.000624	0.00067	"	"	"	"	"	
Dibenz(a,h)anthracene	ND	0.000614	0.00067	"	"	"	"	"	
Fluoranthene	ND	0.000394	0.00067	"	"	"	"	"	
Fluorene	0.0128	0.000286	0.00067	"	"	"	"	"	

Origins Laboratory, Inc.



The results in this report apply to the samples analyzed in accordance with the chain of custody document. This analytical report must be reproduced in its entirety.

Eagle Environmental Consulting, Inc.
8000 W 44th Ave
Wheat Ridge CO 80033

Martin C Eckert III
Project Number: -
Project: Noble - Amigo 1, Fuego C1-19 Tank Battery

WV-DL-01@3'
2/22/2022 1:35:00PM

Analyte	Result	Min Detection Limit	Reporting Limit	Units	Dilution	Batch	Prepared	Analyzed	Notes
---------	--------	---------------------	-----------------	-------	----------	-------	----------	----------	-------

Waypoint Analytical, Inc.
Y202499-06 (Soil)

PAH by 8270D SIM

Indeno(1,2,3-cd)pyrene	ND	0.000627	0.00067	mg/Kg	1	L601980	02/28/2022	02/28/2022
Naphthalene	0.00592	0.000484	0.00067	"	"	"	"	"
Pyrene	0.00192	0.000643	0.00067	"	"	"	"	"

Surrogate: 2-Fluorobiphenyl	58.1 %		33-115			"	"	"
Surrogate: 4-Terphenyl-d14	64.8 %		33-122			"	"	"
Surrogate: Nitrobenzene-d5	53 %		29-110			"	"	"

pH in Soil by 9045D

pH	8.04			pH Units	1	B2B2311	02/23/2022	02/24/2022
----	------	--	--	----------	---	---------	------------	------------

SAR by 20B Saturated Paste

SAR	1.05			SAR	1	B2B2307	02/23/2022	02/24/2022
-----	------	--	--	-----	---	---------	------------	------------

Specific Conductance Mod. 9050A

Specific Conductance (EC)	0.421		0.00500	mmhos/cm	1	B2B2313	02/23/2022	02/24/2022
---------------------------	-------	--	---------	----------	---	---------	------------	------------

Origins Laboratory, Inc.



The results in this report apply to the samples analyzed in accordance with the chain of custody document. This analytical report must be reproduced in its entirety.

Eagle Environmental Consulting, Inc.
8000 W 44th Ave
Wheat Ridge CO 80033

Martin C Eckert III
Project Number: -
Project: Noble - Amigo 1, Fuego C1-19 Tank Battery

TB-SS-01@0.5'
2/22/2022 1:00:00PM

Analyte	Result	Min Detection Limit	Reporting Limit	Units	Dilution	Batch	Prepared	Analyzed	Notes
---------	--------	---------------------	-----------------	-------	----------	-------	----------	----------	-------

Origins Laboratory, Inc.
Y202499-07 (Soil)

Boron (DTPA Sorbitol)

Boron	0.279	0.0998	mg/L	1	B2B2309	02/23/2022	02/24/2022	
-------	-------	--------	------	---	---------	------------	------------	--

DRO/ORO by EPA 8015D

Diesel (C10-C28)	ND	25.0	mg/kg	1	B2B2401	02/24/2022	03/01/2022	U
Residual Range Organics (C28-C40)	ND	100	"	"	"	"	"	U

Surrogate: o-Terphenyl	102 %	50-150			"	"	"	
------------------------	-------	--------	--	--	---	---	---	--

GBTEX+TMBs by 8260D

1,2,4-Trimethylbenzene	ND	0.00200	mg/kg	1	B2B2404	02/24/2022	02/26/2022	U
1,3,5-Trimethylbenzene	ND	0.00200	"	"	"	"	"	U
Benzene	ND	0.00200	"	"	"	"	"	U
Ethylbenzene	ND	0.00200	"	"	"	"	"	U
Toluene	ND	0.00200	"	"	"	"	"	U
Xylenes, total	ND	0.00200	"	"	"	"	"	U
Gasoline Range Hydrocarbons	ND	0.200	"	"	"	"	"	U

Surrogate: 1,2-Dichloroethane-d4	111 %	70-130			"	"	"	
----------------------------------	-------	--------	--	--	---	---	---	--

Origins Laboratory, Inc.



The results in this report apply to the samples analyzed in accordance with the chain of custody document. This analytical report must be reproduced in its entirety.

Eagle Environmental Consulting, Inc.
8000 W 44th Ave
Wheat Ridge CO 80033

Martin C Eckert III
Project Number: -
Project: Noble - Amigo 1, Fuego C1-19 Tank Battery

TB-SS-01@0.5'
2/22/2022 1:00:00PM

Analyte	Result	Min Detection Limit	Reporting Limit	Units	Dilution	Batch	Prepared	Analyzed	Notes
---------	--------	---------------------	-----------------	-------	----------	-------	----------	----------	-------

Origins Laboratory, Inc.
Y202499-07 (Soil)

GBTEX+TMBs by 8260D

Surrogate: Toluene-d8	96.5 %	70-130	B2B24 04	02/24/2022	02/26/2022
Surrogate: 4-Bromofluorobenzene	101 %	70-130	"	"	"

Metals by Saturated Paste by EPA 6010

Calcium	2.45	0.499	meq/L	10	[CALC]	02/23/2022	02/24/2022
Magnesium	ND	0.823	"	"	"	"	"
Sodium	0.700	0.435	"	"	"	"	"

PAH by 8270D SIM

1-Methylnaphthalene	ND	0.000364	0.00067	mg/Kg	1	L601980	02/28/2022	02/28/2022
2-Methylnaphthalene	ND	0.000645	0.00067	"	"	"	"	"
Acenaphthene	ND	0.000304	0.00067	"	"	"	"	"
Anthracene	ND	0.000334	0.00067	"	"	"	"	"
Benzo(a)anthracene	ND	0.000493	0.00067	"	"	"	"	"
Benzo(a)pyrene	0.000838	0.000468	0.00067	"	"	"	"	"
Benzo(b)fluoranthene	0.00149	0.000585	0.00067	"	"	"	"	"
Benzo(k)fluoranthene	ND	0.000437	0.00067	"	"	"	"	"
Chrysene	0.00163	0.000624	0.00067	"	"	"	"	"
Dibenz(a,h)anthracene	ND	0.000614	0.00067	"	"	"	"	"
Fluoranthene	0.00143	0.000394	0.00067	"	"	"	"	"
Fluorene	ND	0.000286	0.00067	"	"	"	"	"

Origins Laboratory, Inc.



The results in this report apply to the samples analyzed in accordance with the chain of custody document. This analytical report must be reproduced in its entirety.

Eagle Environmental Consulting, Inc.
8000 W 44th Ave
Wheat Ridge CO 80033

Martin C Eckert III
Project Number: -
Project: Noble - Amigo 1, Fuego C1-19 Tank Battery

TB-SS-01@0.5'
2/22/2022 1:00:00PM

Analyte	Result	Min Detection Limit	Reporting Limit	Units	Dilution	Batch	Prepared	Analyzed	Notes
---------	--------	---------------------	-----------------	-------	----------	-------	----------	----------	-------

Waypoint Analytical, Inc.
Y202499-07 (Soil)

PAH by 8270D SIM

Indeno(1,2,3-cd)pyrene	ND	0.000627	0.00067	mg/Kg	1	L601980	02/28/2022	02/28/2022
Naphthalene	ND	0.000484	0.00067	"	"	"	"	"
Pyrene	0.00133	0.000643	0.00067	"	"	"	"	"

Surrogate: 2-Fluorobiphenyl	63 %	33-115	"	"	"
Surrogate: 4-Terphenyl-d14	70 %	33-122	"	"	"
Surrogate: Nitrobenzene-d5	50.9 %	29-110	"	"	"

pH in Soil by 9045D

pH	8.30	pH Units	1	B2B2311	02/23/2022	02/24/2022
----	------	----------	---	---------	------------	------------

SAR by 20B Saturated Paste

SAR	0.556	SAR	1	B2B2307	02/23/2022	02/24/2022
-----	-------	-----	---	---------	------------	------------

Specific Conductance Mod. 9050A

Specific Conductance (EC)	0.489	0.00500 mmhos/cm	1	B2B2313	02/23/2022	02/24/2022
---------------------------	-------	------------------	---	---------	------------	------------

Origins Laboratory, Inc.



The results in this report apply to the samples analyzed in accordance with the chain of custody document. This analytical report must be reproduced in its entirety.

Eagle Environmental Consulting, Inc.
8000 W 44th Ave
Wheat Ridge CO 80033

Martin C Eckert III
Project Number: -
Project: Noble - Amigo 1, Fuego C1-19 Tank Battery

TB-SS-02@3'
2/22/2022 1:40:00PM

Analyte	Result	Min Detection Limit	Reporting Limit	Units	Dilution	Batch	Prepared	Analyzed	Notes
---------	--------	---------------------	-----------------	-------	----------	-------	----------	----------	-------

Origins Laboratory, Inc.
Y202499-08 (Soil)

Boron (DTPA Sorbitol)

Boron	0.415	0.0988	mg/L	1	B2B2309	02/23/2022	02/24/2022	
-------	-------	--------	------	---	---------	------------	------------	--

DRO/ORO by EPA 8015D

Diesel (C10-C28)	ND	25.0	mg/kg	1	B2B2401	02/24/2022	03/01/2022	U
Residual Range Organics (C28-C40)	ND	100	"	"	"	"	"	U

Surrogate: o-Terphenyl	99.7 %	50-150			"	"	"	
------------------------	--------	--------	--	--	---	---	---	--

GBTEX+TMBs by 8260D

1,2,4-Trimethylbenzene	ND	0.00200	mg/kg	1	B2B2404	02/24/2022	02/26/2022	U
1,3,5-Trimethylbenzene	ND	0.00200	"	"	"	"	"	U
Benzene	ND	0.00200	"	"	"	"	"	U
Ethylbenzene	ND	0.00200	"	"	"	"	"	U
Toluene	ND	0.00200	"	"	"	"	"	U
Xylenes, total	ND	0.00200	"	"	"	"	"	U
Gasoline Range Hydrocarbons	ND	0.200	"	"	"	"	"	U

Surrogate: 1,2-Dichloroethane-d4	113 %	70-130			"	"	"	
----------------------------------	-------	--------	--	--	---	---	---	--

Origins Laboratory, Inc.



The results in this report apply to the samples analyzed in accordance with the chain of custody document. This analytical report must be reproduced in its entirety.

Eagle Environmental Consulting, Inc.
8000 W 44th Ave
Wheat Ridge CO 80033

Martin C Eckert III
Project Number: -
Project: Noble - Amigo 1, Fuego C1-19 Tank Battery

TB-SS-02@3'
2/22/2022 1:40:00PM

Analyte	Result	Min Detection Limit	Reporting Limit	Units	Dilution	Batch	Prepared	Analyzed	Notes
---------	--------	---------------------	-----------------	-------	----------	-------	----------	----------	-------

Origins Laboratory, Inc.
Y202499-08 (Soil)

GBTEX+TMBs by 8260D

Surrogate: Toluene-d8	95.5 %	70-130	B2B24 04	02/24/2022	02/26/2022
Surrogate: 4-Bromofluorobenzene	102 %	70-130	"	"	"

Metals by Saturated Paste by EPA 6010

Calcium	1.98	0.499	meq/L	10	[CALC]	02/23/2022	02/24/2022
Magnesium	0.930	0.823	"	"	"	"	"
Sodium	0.753	0.435	"	"	"	"	"

PAH by 8270D SIM

1-Methylnaphthalene	0.00248	0.000364	0.00067	mg/Kg	1	L601980	02/28/2022	02/28/2022
2-Methylnaphthalene	0.00215	0.000645	0.00067	"	"	"	"	"
Acenaphthene	ND	0.000304	0.00067	"	"	"	"	"
Anthracene	ND	0.000334	0.00067	"	"	"	"	"
Benzo(a)anthracene	ND	0.000493	0.00067	"	"	"	"	"
Benzo(a)pyrene	ND	0.000468	0.00067	"	"	"	"	"
Benzo(b)fluoranthene	ND	0.000585	0.00067	"	"	"	"	"
Benzo(k)fluoranthene	ND	0.000437	0.00067	"	"	"	"	"
Chrysene	0.000983	0.000624	0.00067	"	"	"	"	"
Dibenz(a,h)anthracene	ND	0.000614	0.00067	"	"	"	"	"
Fluoranthene	ND	0.000394	0.00067	"	"	"	"	"
Fluorene	0.000787	0.000286	0.00067	"	"	"	"	"

Origins Laboratory, Inc.



The results in this report apply to the samples analyzed in accordance with the chain of custody document. This analytical report must be reproduced in its entirety.

Eagle Environmental Consulting, Inc.
8000 W 44th Ave
Wheat Ridge CO 80033

Martin C Eckert III
Project Number: -
Project: Noble - Amigo 1, Fuego C1-19 Tank Battery

TB-SS-02@3'
2/22/2022 1:40:00PM

Analyte	Result	Min Detection Limit	Reporting Limit	Units	Dilution	Batch	Prepared	Analyzed	Notes
---------	--------	---------------------	-----------------	-------	----------	-------	----------	----------	-------

Waypoint Analytical, Inc.
Y202499-08 (Soil)

PAH by 8270D SIM

Indeno(1,2,3-cd)pyrene	ND	0.000627	0.00067	mg/Kg	1	L601980	02/28/2022	02/28/2022
Naphthalene	0.00205	0.000484	0.00067	"	"	"	"	"
Pyrene	0.000702	0.000643	0.00067	"	"	"	"	"

Surrogate: 2-Fluorobiphenyl	67.2 %		33-115			"	"	"
Surrogate: 4-Terphenyl-d14	75.5 %		33-122			"	"	"
Surrogate: Nitrobenzene-d5	54 %		29-110			"	"	"

pH in Soil by 9045D

pH	7.96			pH Units	1	B2B2311	02/23/2022	02/24/2022
----	------	--	--	----------	---	---------	------------	------------

SAR by 20B Saturated Paste

SAR	0.624			SAR	1	B2B2307	02/23/2022	02/24/2022
-----	-------	--	--	-----	---	---------	------------	------------

Specific Conductance Mod. 9050A

Specific Conductance (EC)	0.388		0.00500	mmhos/cm	1	B2B2313	02/23/2022	02/24/2022
---------------------------	-------	--	---------	----------	---	---------	------------	------------

Origins Laboratory, Inc.



The results in this report apply to the samples analyzed in accordance with the chain of custody document. This analytical report must be reproduced in its entirety.

Eagle Environmental Consulting, Inc.
8000 W 44th Ave
Wheat Ridge CO 80033

Martin C Eckert III
Project Number: -
Project: Noble - Amigo 1, Fuego C1-19 Tank
Battery

Extractable Petroleum Hydrocarbons by 8015D - Quality Control Origins Laboratory, Inc.

Analyte	Result	Reporting Limit	Units	Spike Level	Source Result	%REC	%REC Limits	RPD	RPD Limit	Notes
Batch B2B2401 - EPA 3550B										
Blank (B2B2401-BLK1)					Prepared: 02/24/2022 Analyzed: 03/01/2022					
Diesel (C10-C28)	ND	25.0	mg/kg							U
Residual Range Organics (C28-C40)	ND	100	"							U
Surrogate: o-Terphenyl	26		"	24.9		106	50-150			

Origins Laboratory, Inc.



The results in this report apply to the samples analyzed in accordance with the chain of custody document. This analytical report must be reproduced in its entirety.

Eagle Environmental Consulting, Inc.
8000 W 44th Ave
Wheat Ridge CO 80033

Martin C Eckert III
Project Number: -
Project: Noble - Amigo 1, Fuego C1-19 Tank
Battery

Extractable Petroleum Hydrocarbons by 8015D - Quality Control
Origins Laboratory, Inc.

Analyte	Result	Reporting Limit	Units	Spike Level	Source Result	%REC	%REC Limits	RPD	RPD Limit	Notes
---------	--------	--------------------	-------	----------------	------------------	------	----------------	-----	--------------	-------

Batch B2B2401 - EPA 3550B

LCS (B2B2401-BS1)

Prepared: 02/24/2022 Analyzed: 03/01/2022

Diesel (C10-C28)	1000	50.0	mg/kg	1000		100	70-130			
Residual Range Organics (C28-C40)	887	200	"	1000		88.7	70-130			
Surrogate: o-Terphenyl	60		"	49.8		120	50-150			

Origins Laboratory, Inc.



The results in this report apply to the samples analyzed in accordance with the chain of custody document. This analytical report must be reproduced in its entirety.

Jordan A. Merrill, Project Manager

Eagle Environmental Consulting, Inc.
8000 W 44th Ave
Wheat Ridge CO 80033

Martin C Eckert III
Project Number: -
Project: Noble - Amigo 1, Fuego C1-19 Tank
Battery

Extractable Petroleum Hydrocarbons by 8015D - Quality Control
Origins Laboratory, Inc.

Analyte	Result	Reporting Limit	Units	Spike Level	Source Result	%REC	%REC Limits	RPD	RPD Limit	Notes
---------	--------	--------------------	-------	----------------	------------------	------	----------------	-----	--------------	-------

Batch B2B2401 - EPA 3550B

Matrix Spike (B2B2401-MS1)		Source: Y202499-02			Prepared: 02/24/2022 Analyzed: 03/01/2022					
Diesel (C10-C28)	850	50.0	mg/kg	1000	ND	85.0	70-130			
Residual Range Organics (C28-C40)	719	200	"	1000	ND	71.9	70-130			
Surrogate: o-Terphenyl	49		"	49.8		99.0	50-150			

Origins Laboratory, Inc.



The results in this report apply to the samples analyzed in accordance with the chain of custody document. This analytical report must be reproduced in its entirety.

Jordan A. Merrill, Project Manager

Eagle Environmental Consulting, Inc.
8000 W 44th Ave
Wheat Ridge CO 80033

Martin C Eckert III
Project Number: -
Project: Noble - Amigo 1, Fuego C1-19 Tank
Battery

Extractable Petroleum Hydrocarbons by 8015D - Quality Control Origins Laboratory, Inc.

Analyte	Result	Reporting Limit	Units	Spike Level	Source Result	%REC	%REC Limits	RPD	RPD Limit	Notes
---------	--------	-----------------	-------	-------------	---------------	------	-------------	-----	-----------	-------

Batch B2B2401 - EPA 3550B

Matrix Spike Dup (B2B2401-MSD1)		Source: Y202499-02			Prepared: 02/24/2022 Analyzed: 03/01/2022					
Diesel (C10-C28)	1070	50.0	mg/kg	1000	ND	107	70-130	22.7	35	
Residual Range Organics (C28-C40)	876	200	"	1000	ND	87.6	70-130	19.7	35	
Surrogate: o-Terphenyl	52		"	49.8		104	50-150			

Origins Laboratory, Inc.



The results in this report apply to the samples analyzed in accordance with the chain of custody document. This analytical report must be reproduced in its entirety.

Jordan A. Merrill, Project Manager

Eagle Environmental Consulting, Inc.
8000 W 44th Ave
Wheat Ridge CO 80033

Martin C Eckert III
Project Number: -
Project: Noble - Amigo 1, Fuego C1-19 Tank
Battery

Extractable Petroleum Hydrocarbons by 8015D - Quality Control

Origins Laboratory, Inc.

Analyte	Result	Reporting Limit	Units	Spike Level	Source Result	%REC	%REC Limits	RPD	RPD Limit	Notes
Batch B2B2404 - EPA 5030 (soil)										
Blank (B2B2404-BLK1)					Prepared: 02/24/2022 Analyzed: 02/26/2022					
1,2,4-Trimethylbenzene	ND	0.00200	mg/kg							U
1,3,5-Trimethylbenzene	ND	0.00200	"							U
Benzene	ND	0.00200	"							U
Ethylbenzene	ND	0.00200	"							U
Naphthalene	ND	0.0100	"							U
Toluene	ND	0.00200	"							U
Xylenes, total	ND	0.00200	"							U
Gasoline Range Hydrocarbons	ND	0.200	"							U
Surrogate: 1,2-Dichloroethane-d4	0.13		"	0.125	101		70-130			
Surrogate: Toluene-d8	0.12		"	0.125	98.1		70-130			
Surrogate: 4-Bromofluorobenzene	0.13		"	0.125	101		70-130			

Origins Laboratory, Inc.



The results in this report apply to the samples analyzed in accordance with the chain of custody document. This analytical report must be reproduced in its entirety.

Eagle Environmental Consulting, Inc.
8000 W 44th Ave
Wheat Ridge CO 80033

Martin C Eckert III
Project Number: -
Project: Noble - Amigo 1, Fuego C1-19 Tank Battery

Volatile Organic Compounds by GC/MS SW846 8260D - Quality Control
Origins Laboratory, Inc.

Analyte	Result	Reporting Limit	Units	Spike Level	Source Result	%REC	%REC Limits	RPD	RPD Limit	Notes
Batch B2B2404 - EPA 5030 (soil)										
LCS (B2B2404-BS1)					Prepared: 02/24/2022 Analyzed: 02/26/2022					
1,2,4-Trimethylbenzene	0.0863	0.00200	mg/kg	0.100		86.3	70-130			
1,3,5-Trimethylbenzene	0.0877	0.00200	"	0.100		87.7	70-130			
Benzene	0.0884	0.00200	"	0.100		88.4	70-130			
Ethylbenzene	0.0850	0.00200	"	0.100		85.0	70-130			
Naphthalene	0.0883	0.0100	"	0.100		88.3	70-130			
Toluene	0.0839	0.00200	"	0.100		83.9	70-130			
o-Xylene	0.0865	0.00200	"	0.100		86.5	70-130			
m,p-Xylene	0.170	0.00400	"	0.200		85.0	70-130			
Surrogate: 1,2-Dichloroethane-d4	0.13		"	0.125		101	70-130			
Surrogate: Toluene-d8	0.12		"	0.125		98.4	70-130			
Surrogate: 4-Bromofluorobenzene	0.13		"	0.125		101	70-130			

Origins Laboratory, Inc.



The results in this report apply to the samples analyzed in accordance with the chain of custody document. This analytical report must be reproduced in its entirety.

Eagle Environmental Consulting, Inc.
8000 W 44th Ave
Wheat Ridge CO 80033

Martin C Eckert III
Project Number: -
Project: Noble - Amigo 1, Fuego C1-19 Tank Battery

Volatile Organic Compounds by GC/MS SW846 8260D - Quality Control
Origins Laboratory, Inc.

Analyte	Result	Reporting Limit	Units	Spike Level	Source Result	%REC	%REC Limits	RPD	RPD Limit	Notes
---------	--------	-----------------	-------	-------------	---------------	------	-------------	-----	-----------	-------

Batch B2B2404 - EPA 5030 (soil)

Matrix Spike (B2B2404-MS1)		Source: Y202499-01			Prepared: 02/24/2022 Analyzed: 02/26/2022					
1,2,4-Trimethylbenzene	0.0885	0.00200	mg/kg	0.100	0.00344	85.1	70-130			
1,3,5-Trimethylbenzene	0.134	0.00200	"	0.100	0.0198	114	70-130			
Benzene	0.0881	0.00200	"	0.100	ND	88.1	70-130			
Ethylbenzene	0.0875	0.00200	"	0.100	0.000800	86.7	70-130			
Naphthalene	0.0830	0.0100	"	0.100	0.00368	79.3	70-130			
Toluene	0.0843	0.00200	"	0.100	ND	84.3	70-130			
o-Xylene	0.0915	0.00200	"	0.100	0.00142	90.1	70-130			
m,p-Xylene	0.177	0.00400	"	0.200	0.00358	86.6	70-130			
Surrogate: 1,2-Dichloroethane-d4	0.13		"	0.125		103	70-130			
Surrogate: Toluene-d8	0.12		"	0.125		99.9	70-130			
Surrogate: 4-Bromofluorobenzene	0.14		"	0.125		111	70-130			

Origins Laboratory, Inc.



The results in this report apply to the samples analyzed in accordance with the chain of custody document. This analytical report must be reproduced in its entirety.

Jordan A. Merrill, Project Manager

Eagle Environmental Consulting, Inc.
8000 W 44th Ave
Wheat Ridge CO 80033

Martin C Eckert III
Project Number: -
Project: Noble - Amigo 1, Fuego C1-19 Tank Battery

Volatile Organic Compounds by GC/MS SW846 8260D - Quality Control
Origins Laboratory, Inc.

Analyte	Result	Reporting Limit	Units	Spike Level	Source Result	%REC	%REC Limits	RPD	RPD Limit	Notes
Batch B2B2404 - EPA 5030 (soil)										
Matrix Spike Dup (B2B2404-MSD1)		Source: Y202499-01			Prepared: 02/24/2022 Analyzed: 02/26/2022					
1,2,4-Trimethylbenzene	0.0786	0.00200	mg/kg	0.100	0.00344	75.2	70-130	11.8	20	
1,3,5-Trimethylbenzene	0.113	0.00200	"	0.100	0.0198	93.6	70-130	16.4	20	
Benzene	0.0829	0.00200	"	0.100	ND	82.9	70-130	6.08	20	
Ethylbenzene	0.0818	0.00200	"	0.100	0.000800	81.0	70-130	6.76	20	
Naphthalene	0.0691	0.0100	"	0.100	0.00368	65.4	70-130	18.2	20	QM-07
Toluene	0.0790	0.00200	"	0.100	ND	79.0	70-130	6.49	20	
o-Xylene	0.0859	0.00200	"	0.100	0.00142	84.5	70-130	6.29	20	
m,p-Xylene	0.163	0.00400	"	0.200	0.00358	79.5	70-130	8.32	20	
Surrogate: 1,2-Dichloroethane-d4	0.13		"	0.125		103	70-130			
Surrogate: Toluene-d8	0.12		"	0.125		98.0	70-130			
Surrogate: 4-Bromofluorobenzene	0.14		"	0.125		115	70-130			

Origins Laboratory, Inc.



The results in this report apply to the samples analyzed in accordance with the chain of custody document. This analytical report must be reproduced in its entirety.

Eagle Environmental Consulting, Inc.
8000 W 44th Ave
Wheat Ridge CO 80033

Martin C Eckert III
Project Number: -
Project: Noble - Amigo 1, Fuego C1-19 Tank Battery

Volatile Organic Compounds by GC/MS SW846 8260D - Quality Control
Origins Laboratory, Inc.

Analyte	Result	Reporting Limit	Units	Spike Level	Source Result	%REC	%REC Limits	RPD	RPD Limit	Notes
---------	--------	-----------------	-------	-------------	---------------	------	-------------	-----	-----------	-------

Saturated Paste - Quality Control
Origins Laboratory, Inc.

Analyte	Result	Reporting Limit	Units	Spike Level	Source Result	%REC	%REC Limits	RPD	RPD Limit	Notes
---------	--------	-----------------	-------	-------------	---------------	------	-------------	-----	-----------	-------

Batch B2B2311 - NO PREP

Duplicate (B2B2311-DUP1)

Source: Y202499-01

Prepared: 02/23/2022 Analyzed: 02/24/2022

pH	7.85		pH Units	8.03		2.27	25
----	------	--	----------	------	--	------	----

Batch B2B2313 - NO PREP

Blank (B2B2313-BLK1)

Prepared: 02/23/2022 Analyzed: 02/24/2022

Specific Conductance (EC)	0.000900	0.00500	mmhos/cm
---------------------------	----------	---------	----------

Duplicate (B2B2313-DUP1)

Source: Y202499-01

Prepared: 02/23/2022 Analyzed: 02/24/2022

Specific Conductance (EC)	1.70	0.00500	mmhos/cm	1.28		28.6	25	QR-DUP
---------------------------	------	---------	----------	------	--	------	----	--------

Origins Laboratory, Inc.



The results in this report apply to the samples analyzed in accordance with the chain of custody document. This analytical report must be reproduced in its entirety.

Jordan A. Merrill, Project Manager

Eagle Environmental Consulting, Inc.
8000 W 44th Ave
Wheat Ridge CO 80033

Martin C Eckert III
Project Number: -
Project: Noble - Amigo 1, Fuego C1-19 Tank
Battery

PAH by 8270D SIM - Quality Control
Waypoint Analytical, Inc.

Analyte	Result	Reporting Limit	Units	Spike Level	Source Result	%REC	%REC Limits	RPD	RPD Limit	Notes
---------	--------	-----------------	-------	-------------	---------------	------	-------------	-----	-----------	-------

Batch L601980 - 3550B

MSD (L 94830-MSD-L601980)		Source: 94830			Prepared: 02/28/2022 Analyzed: 02/28/2022					
Naphthalene	0.086	0.000484	mg/Kg	0.164	<0.000484	52.4	30-130	4.1	30	
1-Methylnaphthalene	0.0837	0.000364	"	0.164	<0.000364	51	30-130	4.6	30	
2-Methylnaphthalene	0.0827	0.000645	"	0.164	<0.000645	50.4	30-130	4	30	
Pyrene	0.103	0.000643	"	0.164	<0.000643	62.8	30-130	1.9	30	
Acenaphthene	0.0759	0.000304	"	0.164	<0.000304	46.2	30-130	6.8	30	
Anthracene	0.0878	0.000334	"	0.164	<0.000334	53.5	30-130	6.2	30	
Benzo(a)anthracene	0.0982	0.000493	"	0.164	<0.000493	59.8	30-130	0.3	30	
Benzo(a)pyrene	0.107	0.000468	"	0.164	<0.000468	65.2	30-130	3.6	30	
Indeno(1,2,3-cd)pyrene	0.0793	0.000627	"	0.164	<0.000627	48.3	30-130	10	30	
Fluorene	0.0853	0.000286	"	0.164	<0.000286	52	30-130	6.5	30	
Fluoranthene	0.101	0.000394	"	0.164	<0.000394	61.5	30-130	0.9	30	
Dibenz(a,h)anthracene	0.101	0.000614	"	0.164	<0.000614	61.5	30-130	14	30	
Chrysene	0.103	0.000624	"	0.164	<0.000624	62.8	30-130	0.9	30	
Benzo(k)fluoranthene	0.0948	0.000437	"	0.164	<0.000437	57.8	30-130	11.1	30	
Benzo(b)fluoranthene	0.0904	0.000585	"	0.164	<0.000585	55.1	30-130	4.3	30	
Surrogate: Nitrobenzene-d5	50.6		"	0.328	161	50.6	29-110			
Surrogate: 2-Fluorobiphenyl	58.5		"	0.328	180	58.5	33-115			
Surrogate: 4-Terphenyl-d14	73.7		"	0.328	209	73.7	33-122			

MS (L 94830-MS-L601980)		Source: 94830			Prepared: 02/28/2022 Analyzed: 02/28/2022					
Benzo(k)fluoranthene	0.106	0.000437	mg/Kg	0.163	<0.000437	65	30-130			
1-Methylnaphthalene	0.0877	0.000364	"	0.163	<0.000364	53.8	30-130			
Pyrene	0.101	0.000643	"	0.163	<0.000643	61.9	30-130			
Naphthalene	0.0896	0.000484	"	0.163	<0.000484	54.9	30-130			
Indeno(1,2,3-cd)pyrene	0.0717	0.000627	"	0.163	<0.000627	43.9	30-130			
Fluorene	0.0911	0.000286	"	0.163	<0.000286	55.8	30-130			
Fluoranthene	0.1	0.000394	"	0.163	<0.000394	61.3	30-130			

Origins Laboratory, Inc.



The results in this report apply to the samples analyzed in accordance with the chain of custody document. This analytical report must be reproduced in its entirety.

Eagle Environmental Consulting, Inc.
8000 W 44th Ave
Wheat Ridge CO 80033

Martin C Eckert III
Project Number: -
Project: Noble - Amigo 1, Fuego C1-19 Tank
Battery

PAH by 8270D SIM - Quality Control
Waypoint Analytical, Inc.

Analyte	Result	Reporting Limit	Units	Spike Level	Source Result	%REC	%REC Limits	RPD	RPD Limit	Notes
---------	--------	-----------------	-------	-------------	---------------	------	-------------	-----	-----------	-------

Batch L601980 - 3550B

MS (L 94830-MS-L601980)		Source: 94830			Prepared: 02/28/2022 Analyzed: 02/28/2022					
Chrysene	0.104	0.000624	mg/Kg	0.163	<0.000624	63.8	30-130			
Benzo(b)fluoranthene	0.0944	0.000585	"	0.163	<0.000585	57.9	30-130			
Benzo(a)pyrene	0.111	0.000468	"	0.163	<0.000468	68	30-130			
Benzo(a)anthracene	0.0985	0.000493	"	0.163	<0.000493	60.4	30-130			
Anthracene	0.0935	0.000334	"	0.163	<0.000334	57.3	30-130			
Acenaphthene	0.0813	0.000304	"	0.163	<0.000304	49.8	30-130			
2-Methylnaphthalene	0.0861	0.000645	"	0.163	<0.000645	52.8	30-130			
Dibenz(a,h)anthracene	0.0877	0.000614	"	0.163	<0.000614	53.8	30-130			
Surrogate: Nitrobenzene-d5	54.2		"	0.326	161	54.2	29-110			
Surrogate: 2-Fluorobiphenyl	62.5		"	0.326	180	62.5	33-115			
Surrogate: 4-Terphenyl-d14	76.6		"	0.326	209	76.6	33-122			

LCS (LCS-L601980)		Prepared: 02/28/2022 Analyzed: 02/28/2022								
2-Methylnaphthalene	0.102	0.000645	mg/Kg	0.167		61	30-130			
Fluorene	0.0938	0.000286	"	0.167		56.1	30-130			
Benzo(b)fluoranthene	0.105	0.000585	"	0.167		62.8	30-130			
Benzo(a)pyrene	0.116	0.000468	"	0.167		69.4	30-130			
Fluoranthene	0.099	0.000394	"	0.167		59.2	30-130			
Pyrene	0.101	0.000643	"	0.167		60.4	30-130			
Naphthalene	0.099	0.000484	"	0.167		59.2	30-130			
Dibenz(a,h)anthracene	0.11	0.000614	"	0.167		65.8	30-130			
Chrysene	0.115	0.000624	"	0.167		68.8	30-130			
1-Methylnaphthalene	0.108	0.000364	"	0.167		64.6	30-130			
Benzo(a)anthracene	0.108	0.000493	"	0.167		64.6	30-130			
Anthracene	0.1	0.000334	"	0.167		59.8	30-130			
Acenaphthene	0.0876	0.000304	"	0.167		52.4	30-130			
Benzo(k)fluoranthene	0.107	0.000437	"	0.167		64	30-130			

Origins Laboratory, Inc.



The results in this report apply to the samples analyzed in accordance with the chain of custody document. This analytical report must be reproduced in its entirety.

Eagle Environmental Consulting, Inc.
8000 W 44th Ave
Wheat Ridge CO 80033

Martin C Eckert III
Project Number: -
Project: Noble - Amigo 1, Fuego C1-19 Tank
Battery

PAH by 8270D SIM - Quality Control
Waypoint Analytical, Inc.

Analyte	Result	Reporting Limit	Units	Spike Level	Source Result	%REC	%REC Limits	RPD	RPD Limit	Notes
---------	--------	-----------------	-------	-------------	---------------	------	-------------	-----	-----------	-------

Batch L601980 - 3550B

LCS (LCS-L601980)

Prepared: 02/28/2022 Analyzed: 02/28/2022

Indeno(1,2,3-cd)pyrene	0.0857	0.000627	mg/Kg	0.167		51.3	30-130			
Surrogate: 2-Fluorobiphenyl	74.4		"	0.333		74.4	33-115			
Surrogate: Nitrobenzene-d5	57.3		"	0.333		57.3	29-110			
Surrogate: 4-Terphenyl-d14	75.3		"	0.333		75.3	33-122			

LRB (LRB-L601980)

Prepared: 02/28/2022 Analyzed: 02/28/2022

Indeno(1,2,3-cd)pyrene	ND	0.00067	mg/Kg				-			
Naphthalene	ND	0.00067	"				-			
2-Methylnaphthalene	ND	0.00067	"				-			
Fluorene	ND	0.00067	"				-			
Pyrene	ND	0.00067	"				-			
Acenaphthene	ND	0.00067	"				-			
Anthracene	ND	0.00067	"				-			
Benzo(a)anthracene	ND	0.00067	"				-			
Benzo(b)fluoranthene	ND	0.00067	"				-			
Benzo(k)fluoranthene	ND	0.00067	"				-			
Chrysene	ND	0.00067	"				-			
Dibenz(a,h)anthracene	ND	0.00067	"				-			
Fluoranthene	ND	0.00067	"				-			
Benzo(a)pyrene	ND	0.00067	"				-			
1-Methylnaphthalene	ND	0.00067	"				-			
Surrogate: Nitrobenzene-d5	57.3		"	0.333		57.3	29-110			
Surrogate: 2-Fluorobiphenyl	72		"	0.333		72	33-115			
Surrogate: 4-Terphenyl-d14	82.8		"	0.333		82.8	33-122			

Origins Laboratory, Inc.



The results in this report apply to the samples analyzed in accordance with the chain of custody document. This analytical report must be reproduced in its entirety.

Eagle Environmental Consulting, Inc.
8000 W 44th Ave
Wheat Ridge CO 80033

Martin C Eckert III
Project Number: -
Project: Noble - Amigo 1, Fuego C1-19 Tank Battery

Total Metals by 6020B - Quality Control
Waypoint Analytical, Inc.

Analyte	Result	Reporting Limit	Units	Spike Level	Source Result	%REC	%REC Limits	RPD	RPD Limit	Notes
---------	--------	-----------------	-------	-------------	---------------	------	-------------	-----	-----------	-------

Batch L601932 - 3050B

MSD (L 94709-MSD-L601932)		Source: 94709			Prepared: 02/28/2022 Analyzed: 03/05/2022					
Cadmium	0.443	0.0259	mg/Kg	0.475	<0.0259	93	75-125	5.2	80	
Zinc	24.2	0.534	"	23.7	4.16	84	75-125	1.2	80	
Silver	0.481	0.0067	"	0.475	<0.0067	101	75-125	3.8	80	
Selenium	4.7	0.103	"	4.75	<0.103	99	75-125	4.1	80	
Nickel	2.76	0.0633	"	2.37	1.15	68	75-125	5.2	80	*
Copper	2.72	0.0806	"	2.37	1.11	68	75-125	0.3	80	*
Barium	10.2	0.042	"	4.75	12.6	NR	75-125	5.3	80	*
Arsenic	2.56	0.0855	"	2.37	0.371	92	75-125	0.3	80	
Lead	2.89	0.031	"	2.37	1.58	55	75-125	0.3	80	*
MS (L 94709-MS-L601932)		Source: 94709			Prepared: 02/28/2022 Analyzed: 03/05/2022					
Nickel	2.91	0.0633	mg/Kg	2.3	1.15	76	75-125			
Arsenic	2.57	0.0855	"	2.3	0.371	96	75-125			
Barium	9.67	0.042	"	4.6	12.6	NR	75-125			*
Cadmium	0.467	0.0259	"	0.46	<0.0259	101	75-125			
Selenium	4.9	0.103	"	4.6	<0.103	106	75-125			
Silver	0.463	0.0067	"	0.46	<0.0067	101	75-125			
Zinc	23.9	0.534	"	23	4.16	86	75-125			
Copper	2.71	0.0806	"	2.3	1.11	70	75-125			*
Lead	2.88	0.031	"	2.3	1.58	56	75-125			*
LCS (LCS-L601932)					Prepared: 02/28/2022 Analyzed: 03/05/2022					
Barium	4.53	0.042	mg/Kg	5		91	80-120			
Zinc	23.4	0.534	"	25		94	80-120			
Silver	0.477	0.0067	"	0.5		95	80-120			
Selenium	4.66	0.103	"	5		93	80-120			
Nickel	2.57	0.0633	"	2.5		103	80-120			

Origins Laboratory, Inc.



The results in this report apply to the samples analyzed in accordance with the chain of custody document. This analytical report must be reproduced in its entirety.

Eagle Environmental Consulting, Inc.
8000 W 44th Ave
Wheat Ridge CO 80033

Martin C Eckert III
Project Number: -
Project: Noble - Amigo 1, Fuego C1-19 Tank
Battery

Total Metals by 6020B - Quality Control
Waypoint Analytical, Inc.

Analyte	Result	Reporting Limit	Units	Spike Level	Source Result	%REC	%REC Limits	RPD	RPD Limit	Notes
---------	--------	-----------------	-------	-------------	---------------	------	-------------	-----	-----------	-------

Batch L601932 - 3050B

LCS (LCS-L601932)

Prepared: 02/28/2022 Analyzed: 03/05/2022

Lead	2.33	0.031	mg/Kg	2.5		93	80-120			
Copper	2.42	0.0806	"	2.5		97	80-120			
Cadmium	0.446	0.0259	"	0.5		89	80-120			
Arsenic	2.5	0.0855	"	2.5		100	80-120			

LRB (LRB-L601932)

Prepared: 02/28/2022 Analyzed: 03/05/2022

Zinc	ND	2.5	mg/Kg				-			
Silver	ND	0.25	"				-			
Selenium	ND	0.25	"				-			
Nickel	ND	0.25	"				-			
Arsenic	ND	0.25	"				-			
Barium	ND	0.25	"				-			
Cadmium	ND	0.25	"				-			
Copper	ND	0.25	"				-			
Lead	ND	0.25	"				-			

Origins Laboratory, Inc.



The results in this report apply to the samples analyzed in accordance with the chain of custody document. This analytical report must be reproduced in its entirety.

Eagle Environmental Consulting, Inc.
8000 W 44th Ave
Wheat Ridge CO 80033

Martin C Eckert III
Project Number: -
Project: Noble - Amigo 1, Fuego C1-19 Tank Battery

Total Metals by 7196A - Quality Control
Waypoint Analytical, Inc.

Analyte	Result	Reporting Limit	Units	Spike Level	Source Result	%REC	%REC Limits	RPD	RPD Limit	Notes
Batch L602872 -										
DUP (L 94829-DUP)		Source: 94829			Prepared: Analyzed: 03/04/2022					
Chromium, Hexavalent	ND	0.244	mg/Kg		<0.500	-		0	20	
MS (L 94829-MS)		Source: 94829			Prepared: Analyzed: 03/04/2022					
Chromium, Hexavalent	0.519	0.244	mg/Kg	7.7	<0.244	7	75-125			*
LCS (LCS)					Prepared: Analyzed: 03/04/2022					
Chromium, Hexavalent	7.4	0.244	mg/Kg	8		93	75-125			
LRB (LRB)					Prepared: Analyzed: 03/04/2022					
Chromium, Hexavalent	ND	0.5	mg/Kg							

Origins Laboratory, Inc.



The results in this report apply to the samples analyzed in accordance with the chain of custody document. This analytical report must be reproduced in its entirety.

Jordan A. Merrill, Project Manager

Eagle Environmental Consulting, Inc.

8000 W 44th Ave

Wheat Ridge CO 80033

Martin C Eckert III

Project Number: -

Project: Noble - Amigo 1, Fuego C1-19 Tank
Battery

Notes and Definitions

U Sample is Non-Detect.

QR-DUP RPD exceeds QC acceptance criteria, this indicates source sample is not homogenous.

QM-07 The spike recovery was outside acceptance limits for the MS and/or MSD. The batch was accepted based on acceptable LCS recovery.

J Estimated Value. Analyte below reported quantitation limit.

* QC Failure

ND Analyte NOT DETECTED at or above the reporting limit

RPD Relative Percent Difference

All soil results are reported on a wet weight basis.

Origins Laboratory, Inc.



The results in this report apply to the samples analyzed in accordance with the chain of custody document. This analytical report must be reproduced in its entirety.

Jordan A. Merrill, Project Manager



March 14, 2022

Eagle Environmental Consulting, Inc.

Martin C Eckert III

8000 W 44th Ave

Wheat Ridge CO 80033

Project Name - Noble - Fuego C #1-19

Project Number - [none]

Attached are your analytical results for Noble - Fuego C #1-19 received by Origins Laboratory, Inc. February 23, 2022. This project is associated with Origins project number Y202517-01.

The analytical results in the following report were analyzed under the guidelines of EPA Methods. These methods are identified as follows; "SW" are defined in SW-846, "EPA" are defined in 40CFR part 136 and "SM" are defined in the most current revision of Standard Methods For the Examination of Water and Wastewater.

The analytical results apply specifically to the samples and analyses specified per the attached Chain of Custody. As such, this report shall not be reproduced except in full, without the written approval of Origin's laboratory.

Unless otherwise noted, the analytical results for all soil samples are reported on a wet weight basis. All analytical analyses were performed under NELAP guidelines unless noted by a data qualifier.

Any holding time exceedances, deviations from the method specifications or deviations from Origins Laboratory's Standard Operating Procedures are outlined in the case narrative.

Thank you for selecting Origins for your analytical needs. Please contact us with any questions concerning this report, or if we can help with anything at all.

Origins Laboratory, Inc.
303.433.1322
o-squad@oelabinc.com



1725 Elk Place, Denver, CO 80211 | Phone: 303.433.1322 | Fax: 303.265.9645

Eagle Environmental Consulting, Inc.

8000 W 44th Ave

Wheat Ridge CO 80033

Martin C Eckert III

Project Number: [none]

Project: Noble - Fuego C #1-19

CROSS REFERENCE REPORT

Sample ID	Laboratory ID	Matrix	Date Sampled	Date Received
FL-SS-03@3'	Y202517-01	Soil	February 23, 2022 12:15	02/23/2022 15:39

On 3/3/2022, Grace Congdon from Eagle contacted Jordan Bynon via email regarding Fuego C #1-19 requesting that Table 915 metals be added and changed on chain of custody.

Requested modifications to the chain of custody were made by Jordan Bynon on 3/3/2022.

Origins Laboratory, Inc.



The results in this report apply to the samples analyzed in accordance with the chain of custody document. This analytical report must be reproduced in its entirety.

Eagle Environmental Consulting, Inc.
8000 W 44th Ave
Wheat Ridge CO 80033

Martin C Eckert III
Project Number: [none]
Project: Noble - Fuego C #1-19

Origins Laboratory

F-012207-01-R1
Effective Date: 01/09/12

Sample Receipt Checklist

Origins Work Order: 4202517

Client: Eagle

Client Project ID: Fuego 1-19

Checklist Completed by: KEH

Shipped Via: HD

(UPS, FedEx, Hand Delivered, Pick-up, etc.)

Date/time completed: 2/23/22

Airbill #: N/A

Matrix(s) Received: (Check all that apply): ☒ Soil/Solid ☐ Water ☐ Other: _____

Cooler Number/Temperature: 1 / 2-6 °C / _____ °C / _____ °C (Describe)

Thermometer ID: 1003

Requirement Description	Yes	No	N/A	Comments (if any)
If samples require cooling, was the temperature between 0°C to ≤ 6°C ⁽¹⁾ ?	<u>—</u>			
Is there ice present (document if blue ice is used)	<u>—</u>			
Are custody seals present on cooler? (if so, document in comments if they are signed and dated, broken or intact)		<u>—</u>		
Are custody seals present on each sample container? (if so, document in comments if they are signed and dated, broken or intact)		<u>—</u>		
Were all samples received intact ⁽¹⁾ ?	<u>—</u>			
Was adequate sample volume provided ⁽¹⁾ ?	<u>—</u>			
Are short holding time analytes or samples with HTs due within 48 hours present ⁽¹⁾ ?		<u>—</u>		
Is a chain-of-custody (COC) present and filled out completely ⁽¹⁾ ?	<u>—</u>			
Does the COC agree with the number and type of sample bottles received ⁽¹⁾ ?	<u>—</u>			
Do the sample IDs on the bottle labels match the COC ⁽¹⁾ ?	<u>—</u>			
Is the COC properly relinquished by the client with date and time recorded ⁽¹⁾ ?	<u>—</u>			
For volatiles in water – is there headspace (> ¼ inch bubble) present? If yes, contact client and note in narrative.			<u>—</u>	
Are samples preserved that require preservation and was it checked ⁽¹⁾ ? (note ID of confirmation instrument used in comments) / (preservation is not confirmed for subcontracted analyses in order to insure sample integrity)/(pH < 2 for samples preserved with HNO ₃ , HCL, H ₂ SO ₄) / (pH > 10 for samples preserved with NaAsO ₂ +NaOH, ZnAc+NaOH)			<u>—</u>	
Additional Comments (if any):				

⁽¹⁾If NO, then contact the client before proceeding with analysis and note date/time and person contacted as well as the corrective action to in the additional comments (above) and the case narrative.

Reviewed by (Project Manager) jm

Date/Time Reviewed 2-24-22

Origins Laboratory, Inc.

J. Bynon

The results in this report apply to the samples analyzed in accordance with the chain of custody document. This analytical report must be reproduced in its entirety.

Eagle Environmental Consulting, Inc.
8000 W 44th Ave
Wheat Ridge CO 80033

Martin C Eckert III
Project Number: [none]
Project: Noble - Fuego C #1-19

FL-SS-03@3'

2/23/2022 12:15:00PM

Analyte	Result	Min Detection Limit	Reporting Limit	Units	Dilution	Batch	Prepared	Analyzed	Notes
---------	--------	---------------------	-----------------	-------	----------	-------	----------	----------	-------

Origins Laboratory, Inc.
Y202517-01 (Soil)

Boron (DTPA Sorbitol)

Boron	1.11	0.0993	mg/L	1	B2B2503	02/25/2022	02/28/2022	
-------	------	--------	------	---	---------	------------	------------	--

DRO/ORO by EPA 8015D

Diesel (C10-C28)	ND	25.0	mg/kg	1	B2B2401	02/24/2022	03/01/2022	U
Residual Range Organics (C28-C40)	ND	100	"	"	"	"	"	U

Surrogate: o-Terphenyl	97.3 %	50-150	"	"	"	"	"	
------------------------	--------	--------	---	---	---	---	---	--

GBTEX+TMBs by 8260D

1,2,4-Trimethylbenzene	ND	0.00200	mg/kg	1	B2B2404	02/24/2022	02/26/2022	U
1,3,5-Trimethylbenzene	ND	0.00200	"	"	"	"	"	U
Benzene	ND	0.00200	"	"	"	"	"	U
Ethylbenzene	ND	0.00200	"	"	"	"	"	U
Toluene	ND	0.00200	"	"	"	"	"	U
Xylenes, total	ND	0.00200	"	"	"	"	"	U
Gasoline Range Hydrocarbons	ND	0.200	"	"	"	"	"	U

Surrogate: 1,2-Dichloroethane-d4	114 %	70-130	"	"	"	"	"	
----------------------------------	-------	--------	---	---	---	---	---	--

Origins Laboratory, Inc.



The results in this report apply to the samples analyzed in accordance with the chain of custody document. This analytical report must be reproduced in its entirety.

Eagle Environmental Consulting, Inc.
8000 W 44th Ave
Wheat Ridge CO 80033

Martin C Eckert III
Project Number: [none]
Project: Noble - Fuego C #1-19

FL-SS-03@3'

2/23/2022 12:15:00PM

Analyte	Result	Min Detection Limit	Reporting Limit	Units	Dilution	Batch	Prepared	Analyzed	Notes
---------	--------	---------------------	-----------------	-------	----------	-------	----------	----------	-------

Origins Laboratory, Inc.
Y202517-01 (Soil)

GBTEX+TMBs by 8260D

Surrogate: Toluene-d8	95.4 %	70-130	B2B24 04	02/24/2022	02/26/2022
Surrogate: 4-Bromofluorobenzene	100 %	70-130	"	"	"

Metals by Saturated Paste by EPA 6010

Calcium	9.18	0.499	meq/L	10	[CALC]	02/25/2022	03/02/2022
Magnesium	6.11	0.823	"	"	"	"	"
Sodium	12.3	0.435	"	"	"	"	"

PAH by 8270D SIM

1-Methylnaphthalene	0.186	0.00364	0.0067	mg/Kg	10	L601848	02/28/2022	02/28/2022
2-Methylnaphthalene	0.323	0.00645	0.0067	"	"	"	"	"
Acenaphthene	1.6	0.00304	0.0067	"	"	"	"	"
Anthracene	2.46	0.00334	0.0067	"	"	"	"	"
Benzo(a)anthracene	2.8	0.00493	0.0067	"	"	"	"	"
Benzo(a)pyrene	1.89	0.00468	0.0067	"	"	"	"	"
Benzo(b)fluoranthene	2.42	0.00585	0.0067	"	"	"	"	"
Benzo(k)fluoranthene	1.03	0.00437	0.0067	"	"	"	"	"
Chrysene	2.43	0.00624	0.0067	"	"	"	"	"
Dibenz(a,h)anthracene	0.534	0.00614	0.0067	"	"	"	"	"
Fluoranthene	8.73	0.0394	0.067	"	100	"	"	"
Fluorene	1.86	0.00286	0.0067	"	10	"	"	"
Indeno(1,2,3-cd)pyrene	1.26	0.00627	0.0067	"	"	"	"	"

Origins Laboratory, Inc.



The results in this report apply to the samples analyzed in accordance with the chain of custody document. This analytical report must be reproduced in its entirety.

Eagle Environmental Consulting, Inc.
8000 W 44th Ave
Wheat Ridge CO 80033

Martin C Eckert III
Project Number: [none]
Project: Noble - Fuego C #1-19

FL-SS-03@3'

2/23/2022 12:15:00PM

Analyte	Result	Min Detection Limit	Reporting Limit	Units	Dilution	Batch	Prepared	Analyzed	Notes
---------	--------	---------------------	-----------------	-------	----------	-------	----------	----------	-------

Waypoint Analytical, Inc.
Y202517-01 (Soil)

PAH by 8270D SIM

Naphthalene	1.1	0.00484	0.0067	mg/Kg	10	L601848	02/28/2022	02/28/2022	
Pyrene	6.79	0.0643	0.067	"	100	"	"	"	

Surrogate: 2-Fluorobiphenyl	64.5 %		33-115			"	"	"	
Surrogate: 4-Terphenyl-d14	80.3 %		33-122			"	"	"	
Surrogate: Nitrobenzene-d5	59.7 %		29-110			"	"	"	

pH in Soil by 9045D

pH	7.83			pH Units	1	B2B2504	02/25/2022	02/26/2022	
----	------	--	--	----------	---	---------	------------	------------	--

SAR by 20B Saturated Paste

SAR	4.44			SAR	1	B2B2502	02/25/2022	03/02/2022	
-----	------	--	--	-----	---	---------	------------	------------	--

Specific Conductance Mod. 9050A

Specific Conductance (EC)	2.25		0.00500	mmhos/cm	1	B2B2505	02/25/2022	02/26/2022	
---------------------------	------	--	---------	----------	---	---------	------------	------------	--

Total Metals by 6020B

Arsenic	2.06	0.0855	0.25	mg/Kg	5	L603103	03/04/2022	03/09/2022	
Barium	132	0.042	0.25	"	"	"	"	"	
Cadmium	0.171	0.0259	0.25	"	"	"	"	"	J

Origins Laboratory, Inc.



The results in this report apply to the samples analyzed in accordance with the chain of custody document. This analytical report must be reproduced in its entirety.

Eagle Environmental Consulting, Inc.
8000 W 44th Ave
Wheat Ridge CO 80033

Martin C Eckert III
Project Number: [none]
Project: Noble - Fuego C #1-19

FL-SS-03@3'

2/23/2022 12:15:00PM

Analyte	Result	Min Detection Limit	Reporting Limit	Units	Dilution	Batch	Prepared	Analyzed	Notes
---------	--------	------------------------	--------------------	-------	----------	-------	----------	----------	-------

Waypoint Analytical, LLC.
Y202517-01 (Soil)

Total Metals by 6020B

Copper	11.7	0.0806	0.25	mg/Kg	5	L603103	03/04/2022	03/09/2022	
Lead	10.7	0.031	0.25	"	"	"	"	"	
Nickel	10.7	0.0633	0.25	"	"	"	"	"	
Selenium	0.379	0.103	0.25	"	"	"	"	"	
Silver	0.0521	0.0067	0.25	"	"	"	"	"	J
Zinc	48.2	0.534	2.5	"	"	"	"	"	

Total Metals by 7196A

Chromium, Hexavalent	ND	0.497	1.02	mg/Kg	2	L604118	02/23/2022	03/10/2022	
----------------------	----	-------	------	-------	---	---------	------------	------------	--

Origins Laboratory, Inc.



The results in this report apply to the samples analyzed in accordance with the chain of custody document. This analytical report must be reproduced in its entirety.

Eagle Environmental Consulting, Inc.
8000 W 44th Ave
Wheat Ridge CO 80033

Martin C Eckert III
Project Number: [none]
Project: Noble - Fuego C #1-19

Extractable Petroleum Hydrocarbons by 8015D - Quality Control
Origins Laboratory, Inc.

Analyte	Result	Reporting Limit	Units	Spike Level	Source Result	%REC	%REC Limits	RPD	RPD Limit	Notes
Batch B2B2401 - EPA 3550B										
Blank (B2B2401-BLK1)					Prepared: 02/24/2022 Analyzed: 03/01/2022					
Diesel (C10-C28)	ND	25.0	mg/kg							U
Residual Range Organics (C28-C40)	ND	100	"							U
Surrogate: o-Terphenyl	26		"	24.9		106	50-150			

Origins Laboratory, Inc.



The results in this report apply to the samples analyzed in accordance with the chain of custody document. This analytical report must be reproduced in its entirety.

Eagle Environmental Consulting, Inc.
8000 W 44th Ave
Wheat Ridge CO 80033

Martin C Eckert III
Project Number: [none]
Project: Noble - Fuego C #1-19

Extractable Petroleum Hydrocarbons by 8015D - Quality Control
Origins Laboratory, Inc.

Analyte	Result	Reporting Limit	Units	Spike Level	Source Result	%REC	%REC Limits	RPD	RPD Limit	Notes
---------	--------	-----------------	-------	-------------	---------------	------	-------------	-----	-----------	-------

Batch B2B2401 - EPA 3550B

LCS (B2B2401-BS1)

Prepared: 02/24/2022 Analyzed: 03/01/2022

Diesel (C10-C28)	1000	50.0	mg/kg	1000		100	70-130			
Residual Range Organics (C28-C40)	887	200	"	1000		88.7	70-130			
Surrogate: o-Terphenyl	60		"	49.8		120	50-150			

Origins Laboratory, Inc.



The results in this report apply to the samples analyzed in accordance with the chain of custody document. This analytical report must be reproduced in its entirety.

Eagle Environmental Consulting, Inc.
8000 W 44th Ave
Wheat Ridge CO 80033

Martin C Eckert III
Project Number: [none]
Project: Noble - Fuego C #1-19

Extractable Petroleum Hydrocarbons by 8015D - Quality Control
Origins Laboratory, Inc.

Analyte	Result	Reporting Limit	Units	Spike Level	Source Result	%REC	%REC Limits	RPD	RPD Limit	Notes
---------	--------	-----------------	-------	-------------	---------------	------	-------------	-----	-----------	-------

Batch B2B2401 - EPA 3550B

Matrix Spike (B2B2401-MS1)		Source: Y202499-02			Prepared: 02/24/2022 Analyzed: 03/01/2022					
Diesel (C10-C28)	850	50.0	mg/kg	1000	ND	85.0	70-130			
Residual Range Organics (C28-C40)	719	200	"	1000	ND	71.9	70-130			
Surrogate: o-Terphenyl	49		"	49.8		99.0	50-150			

Origins Laboratory, Inc.



The results in this report apply to the samples analyzed in accordance with the chain of custody document. This analytical report must be reproduced in its entirety.

Eagle Environmental Consulting, Inc.
8000 W 44th Ave
Wheat Ridge CO 80033

Martin C Eckert III
Project Number: [none]
Project: Noble - Fuego C #1-19

Extractable Petroleum Hydrocarbons by 8015D - Quality Control
Origins Laboratory, Inc.

Analyte	Result	Reporting Limit	Units	Spike Level	Source Result	%REC	%REC Limits	RPD	RPD Limit	Notes
---------	--------	-----------------	-------	-------------	---------------	------	-------------	-----	-----------	-------

Batch B2B2401 - EPA 3550B

Matrix Spike Dup (B2B2401-MSD1)		Source: Y202499-02			Prepared: 02/24/2022 Analyzed: 03/01/2022					
Diesel (C10-C28)	1070	50.0	mg/kg	1000	ND	107	70-130	22.7	35	
Residual Range Organics (C28-C40)	876	200	"	1000	ND	87.6	70-130	19.7	35	
Surrogate: o-Terphenyl	52		"	49.8		104	50-150			

Origins Laboratory, Inc.



The results in this report apply to the samples analyzed in accordance with the chain of custody document. This analytical report must be reproduced in its entirety.

Eagle Environmental Consulting, Inc.
8000 W 44th Ave
Wheat Ridge CO 80033

Martin C Eckert III
Project Number: [none]
Project: Noble - Fuego C #1-19

Extractable Petroleum Hydrocarbons by 8015D - Quality Control

Origins Laboratory, Inc.

Analyte	Result	Reporting Limit	Units	Spike Level	Source Result	%REC	%REC Limits	RPD	RPD Limit	Notes
Batch B2B2404 - EPA 5030 (soil)										
Blank (B2B2404-BLK1)					Prepared: 02/24/2022 Analyzed: 02/26/2022					
1,2,4-Trimethylbenzene	ND	0.00200	mg/kg							U
1,3,5-Trimethylbenzene	ND	0.00200	"							U
Benzene	ND	0.00200	"							U
Ethylbenzene	ND	0.00200	"							U
Naphthalene	ND	0.0100	"							U
Toluene	ND	0.00200	"							U
Xylenes, total	ND	0.00200	"							U
Gasoline Range Hydrocarbons	ND	0.200	"							U
Surrogate: 1,2-Dichloroethane-d4	0.13		"	0.125	101		70-130			
Surrogate: Toluene-d8	0.12		"	0.125	98.1		70-130			
Surrogate: 4-Bromofluorobenzene	0.13		"	0.125	101		70-130			

Origins Laboratory, Inc.



The results in this report apply to the samples analyzed in accordance with the chain of custody document. This analytical report must be reproduced in its entirety.

Eagle Environmental Consulting, Inc.
8000 W 44th Ave
Wheat Ridge CO 80033

Martin C Eckert III
Project Number: [none]
Project: Noble - Fuego C #1-19

Volatile Organic Compounds by GC/MS SW846 8260D - Quality Control
Origins Laboratory, Inc.

Analyte	Result	Reporting Limit	Units	Spike Level	Source Result	%REC	%REC Limits	RPD	RPD Limit	Notes
---------	--------	-----------------	-------	-------------	---------------	------	-------------	-----	-----------	-------

Batch B2B2404 - EPA 5030 (soil)

LCS (B2B2404-BS1)

Prepared: 02/24/2022 Analyzed: 02/26/2022

1,2,4-Trimethylbenzene	0.0863	0.00200	mg/kg	0.100		86.3	70-130			
1,3,5-Trimethylbenzene	0.0877	0.00200	"	0.100		87.7	70-130			
Benzene	0.0884	0.00200	"	0.100		88.4	70-130			
Ethylbenzene	0.0850	0.00200	"	0.100		85.0	70-130			
Naphthalene	0.0883	0.0100	"	0.100		88.3	70-130			
Toluene	0.0839	0.00200	"	0.100		83.9	70-130			
o-Xylene	0.0865	0.00200	"	0.100		86.5	70-130			
m,p-Xylene	0.170	0.00400	"	0.200		85.0	70-130			
Surrogate: 1,2-Dichloroethane-d4	0.13		"	0.125		101	70-130			
Surrogate: Toluene-d8	0.12		"	0.125		98.4	70-130			
Surrogate: 4-Bromofluorobenzene	0.13		"	0.125		101	70-130			

Origins Laboratory, Inc.



The results in this report apply to the samples analyzed in accordance with the chain of custody document. This analytical report must be reproduced in its entirety.

Eagle Environmental Consulting, Inc.
8000 W 44th Ave
Wheat Ridge CO 80033

Martin C Eckert III
Project Number: [none]
Project: Noble - Fuego C #1-19

Volatile Organic Compounds by GC/MS SW846 8260D - Quality Control
Origins Laboratory, Inc.

Analyte	Result	Reporting Limit	Units	Spike Level	Source Result	%REC	%REC Limits	RPD	RPD Limit	Notes
---------	--------	-----------------	-------	-------------	---------------	------	-------------	-----	-----------	-------

Batch B2B2404 - EPA 5030 (soil)

Matrix Spike (B2B2404-MS1)		Source: Y202499-01			Prepared: 02/24/2022 Analyzed: 02/26/2022					
1,2,4-Trimethylbenzene	0.0885	0.00200	mg/kg	0.100	0.00344	85.1	70-130			
1,3,5-Trimethylbenzene	0.134	0.00200	"	0.100	0.0198	114	70-130			
Benzene	0.0881	0.00200	"	0.100	ND	88.1	70-130			
Ethylbenzene	0.0875	0.00200	"	0.100	0.000800	86.7	70-130			
Naphthalene	0.0830	0.0100	"	0.100	0.00368	79.3	70-130			
Toluene	0.0843	0.00200	"	0.100	ND	84.3	70-130			
o-Xylene	0.0915	0.00200	"	0.100	0.00142	90.1	70-130			
m,p-Xylene	0.177	0.00400	"	0.200	0.00358	86.6	70-130			
Surrogate: 1,2-Dichloroethane-d4	0.13		"	0.125		103	70-130			
Surrogate: Toluene-d8	0.12		"	0.125		99.9	70-130			
Surrogate: 4-Bromofluorobenzene	0.14		"	0.125		111	70-130			

Origins Laboratory, Inc.



The results in this report apply to the samples analyzed in accordance with the chain of custody document. This analytical report must be reproduced in its entirety.

Eagle Environmental Consulting, Inc.
8000 W 44th Ave
Wheat Ridge CO 80033

Martin C Eckert III
Project Number: [none]
Project: Noble - Fuego C #1-19

Volatile Organic Compounds by GC/MS SW846 8260D - Quality Control
Origins Laboratory, Inc.

Analyte	Result	Reporting Limit	Units	Spike Level	Source Result	%REC	%REC Limits	RPD	RPD Limit	Notes
Batch B2B2404 - EPA 5030 (soil)										
Matrix Spike Dup (B2B2404-MSD1)			Source: Y202499-01		Prepared: 02/24/2022 Analyzed: 02/26/2022					
1,2,4-Trimethylbenzene	0.0786	0.00200	mg/kg	0.100	0.00344	75.2	70-130	11.8	20	
1,3,5-Trimethylbenzene	0.113	0.00200	"	0.100	0.0198	93.6	70-130	16.4	20	
Benzene	0.0829	0.00200	"	0.100	ND	82.9	70-130	6.08	20	
Ethylbenzene	0.0818	0.00200	"	0.100	0.000800	81.0	70-130	6.76	20	
Naphthalene	0.0691	0.0100	"	0.100	0.00368	65.4	70-130	18.2	20	QM-07
Toluene	0.0790	0.00200	"	0.100	ND	79.0	70-130	6.49	20	
o-Xylene	0.0859	0.00200	"	0.100	0.00142	84.5	70-130	6.29	20	
m,p-Xylene	0.163	0.00400	"	0.200	0.00358	79.5	70-130	8.32	20	
Surrogate: 1,2-Dichloroethane-d4	0.13		"	0.125		103	70-130			
Surrogate: Toluene-d8	0.12		"	0.125		98.0	70-130			
Surrogate: 4-Bromofluorobenzene	0.14		"	0.125		115	70-130			

Origins Laboratory, Inc.



The results in this report apply to the samples analyzed in accordance with the chain of custody document. This analytical report must be reproduced in its entirety.

Eagle Environmental Consulting, Inc.
8000 W 44th Ave
Wheat Ridge CO 80033

Martin C Eckert III
Project Number: [none]
Project: Noble - Fuego C #1-19

Volatile Organic Compounds by GC/MS SW846 8260D - Quality Control

Origins Laboratory, Inc.

Analyte	Result	Reporting Limit	Units	Spike Level	Source Result	%REC	%REC Limits	RPD	RPD Limit	Notes
---------	--------	-----------------	-------	-------------	---------------	------	-------------	-----	-----------	-------

Saturated Paste - Quality Control

Origins Laboratory, Inc.

Analyte	Result	Reporting Limit	Units	Spike Level	Source Result	%REC	%REC Limits	RPD	RPD Limit	Notes
---------	--------	-----------------	-------	-------------	---------------	------	-------------	-----	-----------	-------

Batch B2B2504 - NO PREP

Duplicate (B2B2504-DUP1)

Source: Y202506-17

Prepared: 02/25/2022 Analyzed: 02/26/2022

pH	7.07		pH Units	7.23		2.24	25
----	------	--	----------	------	--	------	----

Batch B2B2505 - NO PREP

Blank (B2B2505-BLK1)

Prepared: 02/25/2022 Analyzed: 02/26/2022

Specific Conductance (EC)	0.000800	0.00500	mmhos/cm
---------------------------	----------	---------	----------

Duplicate (B2B2505-DUP1)

Source: Y202506-17

Prepared: 02/25/2022 Analyzed: 02/26/2022

Specific Conductance (EC)	0.274	0.00500	mmhos/cm	0.296		7.87	25
---------------------------	-------	---------	----------	-------	--	------	----

Origins Laboratory, Inc.



The results in this report apply to the samples analyzed in accordance with the chain of custody document. This analytical report must be reproduced in its entirety.

Eagle Environmental Consulting, Inc.
8000 W 44th Ave
Wheat Ridge CO 80033

Martin C Eckert III
Project Number: [none]
Project: Noble - Fuego C #1-19

Total Metals by 6020B - Quality Control Waypoint Analytical, LLC.

Analyte	Result	Reporting Limit	Units	Spike Level	Source Result	%REC	%REC Limits	RPD	RPD Limit	Notes
Batch L603103 - 3050B										
MSD (L 94623-MSD-L603103)			Source: Y202517-01		Prepared: 03/04/2022 Analyzed: 03/09/2022					
Lead	13.1	0.031	mg/Kg	2.3	10.7	104	75-125	5.9	80	
Zinc	71.2	0.534	"	23	48.2	100	75-125	8.8	80	
Silver	0.504	0.0067	"	0.46	0.0521	98	75-125	13.5	80	
Copper	13.9	0.0806	"	2.3	11.7	96	75-125	8.2	80	
Cadmium	0.614	0.0259	"	0.46	0.171	96	75-125	10.2	80	
Barium	128	0.042	"	4.6	132	NR	75-125	24	80	*
Arsenic	3.82	0.0855	"	2.3	2.06	77	75-125	6.8	80	
Selenium	3.44	0.103	"	4.6	0.379	67	75-125	8.6	80	*
Nickel	13.5	0.0633	"	2.3	10.7	122	75-125	5.7	80	
MS (L 94623-MS-L603103)			Source: Y202517-01		Prepared: 03/04/2022 Analyzed: 03/09/2022					
Selenium	3.75	0.103	mg/Kg	4.9	0.379	69	75-125			*
Silver	0.577	0.0067	"	0.49	0.0521	107	75-125			
Nickel	14.3	0.0633	"	2.45	10.7	147	75-125			*
Lead	13.9	0.031	"	2.45	10.7	131	75-125			*
Copper	15.1	0.0806	"	2.45	11.7	139	75-125			*
Cadmium	0.68	0.0259	"	0.49	0.171	104	75-125			
Barium	163	0.042	"	4.9	132	633	75-125			*
Arsenic	4.09	0.0855	"	2.45	2.06	83	75-125			
Zinc	77.8	0.534	"	24.5	48.2	121	75-125			
LCS (LCS-L603103)			Prepared: 03/04/2022 Analyzed: 03/09/2022							
Arsenic	2.38	0.0855	mg/Kg	2.5		95	80-120			
Barium	5.12	0.042	"	5		102	80-120			
Cadmium	0.473	0.0259	"	0.5		95	80-120			
Copper	2.37	0.0806	"	2.5		95	80-120			
Lead	2.5	0.031	"	2.5		100	80-120			

Origins Laboratory, Inc.



The results in this report apply to the samples analyzed in accordance with the chain of custody document. This analytical report must be reproduced in its entirety.

Eagle Environmental Consulting, Inc.
8000 W 44th Ave
Wheat Ridge CO 80033

Martin C Eckert III
Project Number: [none]
Project: Noble - Fuego C #1-19

Total Metals by 6020B - Quality Control Waypoint Analytical, LLC.

Analyte	Result	Reporting Limit	Units	Spike Level	Source Result	%REC	%REC Limits	RPD	RPD Limit	Notes
---------	--------	-----------------	-------	-------------	---------------	------	-------------	-----	-----------	-------

Batch L603103 - 3050B

LCS (LCS-L603103)

Prepared: 03/04/2022 Analyzed: 03/09/2022

Nickel	2.45	0.0633	mg/Kg	2.5		98	80-120			
Silver	0.499	0.0067	"	0.5		100	80-120			
Zinc	22.7	0.534	"	25		91	80-120			
Selenium	4.53	0.103	"	5		91	80-120			

LRB (LRB-L603103)

Prepared: 03/04/2022 Analyzed: 03/09/2022

Silver	ND	0.25	mg/Kg				-			
Selenium	ND	0.25	"				-			
Nickel	ND	0.25	"				-			
Lead	ND	0.25	"				-			
Cadmium	ND	0.25	"				-			
Barium	0.0638	0.25	"				-			J
Arsenic	ND	0.25	"				-			
Copper	ND	0.25	"				-			
Zinc	ND	2.5	"				-			

Origins Laboratory, Inc.



The results in this report apply to the samples analyzed in accordance with the chain of custody document. This analytical report must be reproduced in its entirety.

Eagle Environmental Consulting, Inc.
8000 W 44th Ave
Wheat Ridge CO 80033

Martin C Eckert III
Project Number: [none]
Project: Noble - Fuego C #1-19

Total Metals by 7196A - Quality Control Waypoint Analytical, LLC.

Analyte	Result	Reporting Limit	Units	Spike Level	Source Result	%REC	%REC Limits	RPD	RPD Limit	Notes
Batch L604118 -										
DUP (L 86079-DUP)		Source: 86079			Prepared: Analyzed: 03/10/2022					
Chromium, Hexavalent	ND	0.244	mg/Kg		86079	-		0	20	
MS (L 86079-MS)		Source: 86079			Prepared: Analyzed: 03/10/2022					
Chromium, Hexavalent	4.51	0.244	mg/Kg	7.71	86079	58	75-125			*
LCS (LCS)					Prepared: Analyzed: 03/10/2022					
Chromium, Hexavalent	6.91	0.244	mg/Kg	8		86	75-125			
LRB (LRB)					Prepared: Analyzed: 03/10/2022					
Chromium, Hexavalent	ND	0.5	mg/Kg							

Origins Laboratory, Inc.



The results in this report apply to the samples analyzed in accordance with the chain of custody document. This analytical report must be reproduced in its entirety.

Eagle Environmental Consulting, Inc.
8000 W 44th Ave
Wheat Ridge CO 80033

Martin C Eckert III
Project Number: [none]
Project: Noble - Fuego C #1-19

PAH by 8270D SIM - Quality Control
Waypoint Analytical, Inc.

Analyte	Result	Reporting Limit	Units	Spike Level	Source Result	%REC	%REC Limits	RPD	RPD Limit	Notes
---------	--------	-----------------	-------	-------------	---------------	------	-------------	-----	-----------	-------

Batch L601848 - 3550B

MSD (L 97515-MSD-L601848)		Source: 97515			Prepared: 02/28/2022 Analyzed: 02/28/2022					
Dibenz(a,h)anthracene	0.111	0.000614	mg/Kg	0.166	0.00267	65.2	30-130	1.8	30	
Fluoranthene	0.051	0.000394	"	0.166	0.00164	29.7	30-130	10.2	30	*
Fluorene	0.101	0.000286	"	0.166	0.00222	59.5	30-130	6.6	30	
Indeno(1,2,3-cd)pyrene	0.111	0.000627	"	0.166	0.00254	65.3	30-130	6.5	30	
Naphthalene	0.0917	0.000484	"	0.166	0.00213	53.9	30-130	3.1	30	
Pyrene	0.105	0.000643	"	0.166	0.00237	61.8	30-130	8.2	30	
Benzo(a)pyrene	0.113	0.000468	"	0.166	0.00288	66.3	30-130	7.6	30	
2-Methylnaphthalene	0.093	0.000645	"	0.166	0.00208	54.7	30-130	4.6	30	
1-Methylnaphthalene	0.0932	0.000364	"	0.166	0.00211	54.8	30-130	4.7	30	
Benzo(k)fluoranthene	0.0914	0.000437	"	0.166	0.0021	53.7	30-130	0.3	30	
Chrysene	0.101	0.000624	"	0.166	0.00208	59.5	30-130	3.8	30	
Acenaphthene	0.0975	0.000304	"	0.166	0.00192	57.5	30-130	4.5	30	
Anthracene	0.1	0.000334	"	0.166	0.0021	58.9	30-130	5.8	30	
Benzo(a)anthracene	0.101	0.000493	"	0.166	0.00239	59.4	30-130	6.6	30	
Benzo(b)fluoranthene	0.106	0.000585	"	0.166	0.002	62.6	30-130	2.7	30	
Surrogate: Nitrobenzene-d5	58.6		"	0.331	188	58.6	29-110			
Surrogate: 2-Fluorobiphenyl	64.3		"	0.331	205	64.3	33-115			
Surrogate: 4-Terphenyl-d14	67		"	0.331	216	67	33-122			

MS (L 97515-MS-L601848)		Source: 97515			Prepared: 02/28/2022 Analyzed: 02/28/2022					
Chrysene	0.105	0.000624	mg/Kg	0.166	0.00208	62	30-130			
Naphthalene	0.0946	0.000484	"	0.166	0.00213	55.7	30-130			
Indeno(1,2,3-cd)pyrene	0.104	0.000627	"	0.166	0.00254	61.1	30-130			
Fluorene	0.108	0.000286	"	0.166	0.00222	63.7	30-130			
Benzo(k)fluoranthene	0.0917	0.000437	"	0.166	0.0021	53.9	30-130			
Dibenz(a,h)anthracene	0.109	0.000614	"	0.166	0.00267	64	30-130			
Pyrene	0.114	0.000643	"	0.166	0.00237	67.2	30-130			

Origins Laboratory, Inc.



The results in this report apply to the samples analyzed in accordance with the chain of custody document. This analytical report must be reproduced in its entirety.

Eagle Environmental Consulting, Inc.
8000 W 44th Ave
Wheat Ridge CO 80033

Martin C Eckert III
Project Number: [none]
Project: Noble - Fuego C #1-19

PAH by 8270D SIM - Quality Control
Waypoint Analytical, Inc.

Analyte	Result	Reporting Limit	Units	Spike Level	Source Result	%REC	%REC Limits	RPD	RPD Limit	Notes
---------	--------	-----------------	-------	-------------	---------------	------	-------------	-----	-----------	-------

Batch L601848 - 3550B

MS (L 97515-MS-L601848)		Source: 97515			Prepared: 02/28/2022 Analyzed: 02/28/2022					
Benzo(b)fluoranthene	0.109	0.000585	mg/Kg	0.166	0.002	64.4	30-130			
Fluoranthene	0.0565	0.000394	"	0.166	0.00164	33	30-130			
1-Methylnaphthalene	0.0977	0.000364	"	0.166	0.00211	57.5	30-130			
2-Methylnaphthalene	0.0974	0.000645	"	0.166	0.00208	57.4	30-130			
Acenaphthene	0.102	0.000304	"	0.166	0.00192	60.2	30-130			
Anthracene	0.106	0.000334	"	0.166	0.0021	62.5	30-130			
Benzo(a)anthracene	0.108	0.000493	"	0.166	0.00239	63.6	30-130			
Benzo(a)pyrene	0.122	0.000468	"	0.166	0.00288	71.7	30-130			
Surrogate: Nitrobenzene-d5	59.6		"	0.332	188	59.6	29-110			
Surrogate: 2-Fluorobiphenyl	66.2		"	0.332	205	66.2	33-115			
Surrogate: 4-Terphenyl-d14	71.3		"	0.332	216	71.3	33-122			

LCS (LCS-L601848)		Prepared: 02/28/2022 Analyzed: 02/28/2022								
Fluoranthene	0.124	0.000394	mg/Kg	0.167		74.2	30-130			
Benzo(k)fluoranthene	0.12	0.000437	"	0.167		71.8	30-130			
Naphthalene	0.102	0.000484	"	0.167		61	30-130			
Pyrene	0.124	0.000643	"	0.167		74.2	30-130			
Fluorene	0.117	0.000286	"	0.167		70	30-130			
Dibenz(a,h)anthracene	0.147	0.000614	"	0.167		88	30-130			
Chrysene	0.12	0.000624	"	0.167		71.8	30-130			
1-Methylnaphthalene	0.106	0.000364	"	0.167		63.4	30-130			
Benzo(a)pyrene	0.132	0.000468	"	0.167		79	30-130			
Benzo(a)anthracene	0.123	0.000493	"	0.167		73.6	30-130			
Anthracene	0.117	0.000334	"	0.167		70	30-130			
Acenaphthene	0.11	0.000304	"	0.167		65.8	30-130			
2-Methylnaphthalene	0.106	0.000645	"	0.167		63.4	30-130			
Indeno(1,2,3-cd)pyrene	0.142	0.000627	"	0.167		85	30-130			

Origins Laboratory, Inc.



The results in this report apply to the samples analyzed in accordance with the chain of custody document. This analytical report must be reproduced in its entirety.

Eagle Environmental Consulting, Inc.
8000 W 44th Ave
Wheat Ridge CO 80033

Martin C Eckert III
Project Number: [none]
Project: Noble - Fuego C #1-19

PAH by 8270D SIM - Quality Control
Waypoint Analytical, Inc.

Analyte	Result	Reporting Limit	Units	Spike Level	Source Result	%REC	%REC Limits	RPD	RPD Limit	Notes
---------	--------	-----------------	-------	-------------	---------------	------	-------------	-----	-----------	-------

Batch L601848 - 3550B

LCS (LCS-L601848)

Prepared: 02/28/2022 Analyzed: 02/28/2022

Benzo(b)fluoranthene	0.135	0.000585	mg/Kg	0.167		80.8	30-130			
Surrogate: Nitrobenzene-d5	65.1		"	0.333		65.1	29-110			
Surrogate: 4-Terphenyl-d14	76.5		"	0.333		76.5	33-122			
Surrogate: 2-Fluorobiphenyl	70.8		"	0.333		70.8	33-115			

LRB (LRB-L601848)

Prepared: 02/28/2022 Analyzed: 02/28/2022

Chrysene	ND	0.00067	mg/Kg				-			
Dibenz(a,h)anthracene	ND	0.00067	"				-			
Fluoranthene	ND	0.00067	"				-			
Fluorene	ND	0.00067	"				-			
Indeno(1,2,3-cd)pyrene	ND	0.00067	"				-			
Benzo(k)fluoranthene	ND	0.00067	"				-			
Naphthalene	ND	0.00067	"				-			
Benzo(b)fluoranthene	ND	0.00067	"				-			
Benzo(a)pyrene	ND	0.00067	"				-			
Benzo(a)anthracene	ND	0.00067	"				-			
Acenaphthene	ND	0.00067	"				-			
2-Methylnaphthalene	ND	0.00067	"				-			
1-Methylnaphthalene	ND	0.00067	"				-			
Pyrene	ND	0.00067	"				-			
Anthracene	ND	0.00067	"				-			
Surrogate: Nitrobenzene-d5	64.8		"	0.333		64.8	29-110			
Surrogate: 4-Terphenyl-d14	72		"	0.333		72	33-122			
Surrogate: 2-Fluorobiphenyl	69		"	0.333		69	33-115			

Origins Laboratory, Inc.



The results in this report apply to the samples analyzed in accordance with the chain of custody document. This analytical report must be reproduced in its entirety.

Eagle Environmental Consulting, Inc.
8000 W 44th Ave
Wheat Ridge CO 80033

Martin C Eckert III
Project Number: [none]
Project: Noble - Fuego C #1-19

Notes and Definitions

U Sample is Non-Detect.

QM-07 The spike recovery was outside acceptance limits for the MS and/or MSD. The batch was accepted based on acceptable LCS recovery.

J Estimated Value. Analyte below reported quantitation limit.

* QC Failure

ND Analyte NOT DETECTED at or above the reporting limit

RPD Relative Percent Difference

All soil results are reported on a wet weight basis.

Origins Laboratory, Inc.



The results in this report apply to the samples analyzed in accordance with the chain of custody document. This analytical report must be reproduced in its entirety.



March 31, 2022

Eagle Environmental Consulting, Inc.

Martin C Eckert III

8000 W 44th Ave

Wheat Ridge CO 80033

Project Name - Noble - Fuego C #1-19

Project Number - [none]

Attached are your analytical results for Noble - Fuego C #1-19 received by Origins Laboratory, Inc. March 18, 2022. This project is associated with Origins project number Y203481-01.

The analytical results in the following report were analyzed under the guidelines of EPA Methods. These methods are identified as follows; "SW" are defined in SW-846, "EPA" are defined in 40CFR part 136 and "SM" are defined in the most current revision of Standard Methods For the Examination of Water and Wastewater.

The analytical results apply specifically to the samples and analyses specified per the attached Chain of Custody. As such, this report shall not be reproduced except in full, without the written approval of Origin's laboratory.

Unless otherwise noted, the analytical results for all soil samples are reported on a wet weight basis. All analytical analyses were performed under NELAP guidelines unless noted by a data qualifier.

Any holding time exceedances, deviations from the method specifications or deviations from Origins Laboratory's Standard Operating Procedures are outlined in the case narrative.

Thank you for selecting Origins for your analytical needs. Please contact us with any questions concerning this report, or if we can help with anything at all.

Origins Laboratory, Inc.
303.433.1322
o-squad@oelabinc.com



1725 Elk Place, Denver, CO 80211 | Phone: 303.433.1322 | Fax: 303.265.9645

Eagle Environmental Consulting, Inc.

8000 W 44th Ave

Wheat Ridge CO 80033

Martin C Eckert III

Project Number: [none]

Project: Noble - Fuego C #1-19

CROSS REFERENCE REPORT

Sample ID	Laboratory ID	Matrix	Date Sampled	Date Received
Background-01@1'	Y203481-01	Soil	February 23, 2022 12:00	03/18/2022 16:23

Origins Laboratory, Inc.



The results in this report apply to the samples analyzed in accordance with the chain of custody document. This analytical report must be reproduced in its entirety.

Eagle Environmental Consulting, Inc.
8000 W 44th Ave
Wheat Ridge CO 80033

Martin C Eckert III
Project Number: [none]
Project: Noble - Fuego C #1-19

ORIGINS
LABORATORY, INC

www.originslaboratory.com

708481

page 1 of 1

Client: Eagle Env. Consulting
Address: 8000 W 44th Ave
Wheat Ridge, CO 80033
Telephone Number: 303-433-0479
Email Address: Mike@eagle-env.com

Project Manager: Martin Eckert III
Project Name: Fuego C #1-19
Project Number: [blank]
Samples Collected By: ER

Fax: 303.265.9645

Sample ID Description	Date Sampled	Time Sampled	# of Containers	Preservative			Matrix			Analysis			Sample Instructions	
				Unpreserved	HCl	HNO ₃	Groundwater	Soil	Air Summa	Other	As ⁵ Se ⁶	Barium		Go ² Se ⁵
Background - 0101'	2-23-22	12:00	1	X			X					X	X	1
														2
														3
														4
														5
														6
														7
														8
														9
														10

Relinquished By:	Date:	Time:	Received By:	Date:	Time:	Turnaround Time:
h	3/18/22	16:23	KA	3/18/22	16:23	Some Day <input type="checkbox"/> 24 Hr <input type="checkbox"/> 48 Hr <input type="checkbox"/> 72 Hr <input type="checkbox"/> Standard <input checked="" type="checkbox"/>

Date Results Needed

Temp Received- 3.1

48.11 to Cole

Noble

Origins Laboratory, Inc.

J. Bynon

The results in this report apply to the samples analyzed in accordance with the chain of custody document. This analytical report must be reproduced in its entirety.

Eagle Environmental Consulting, Inc.
8000 W 44th Ave
Wheat Ridge CO 80033

Martin C Eckert III
Project Number: [none]
Project: Noble - Fuego C #1-19

Origins Laboratory

F-012207-01-R1
Effective Date: 01/09/12

Sample Receipt Checklist

Origins Work Order: Y203481

Client: Eagle

Client Project ID: Fuego C 1-19

Checklist Completed by: SG

Shipped Via: HD

(UPS, FedEx, Hand Delivered, Pick-up, etc.)

Date/time completed: 3/21/12

Airbill #: N/A

Matrix(s) Received: (Check all that apply): ☒ Soil/Solid ☐ Water ☐ Other: _____

Cooler Number/Temperature: 1 3.4 °C ☐ °C ☐ °C ☐ °C (Describe)

Thermometer ID: T004

Requirement Description	Yes	No	N/A	Comments (if any)
If samples require cooling, was the temperature between 0°C to ≤ 6°C ⁽¹⁾ ?	<input checked="" type="checkbox"/>	<input type="checkbox"/>	<input type="checkbox"/>	
Is there ice present (document if blue ice is used)	<input checked="" type="checkbox"/>	<input type="checkbox"/>	<input type="checkbox"/>	
Are custody seals present on cooler? (if so, document in comments if they are signed and dated, broken or intact)	<input type="checkbox"/>	<input checked="" type="checkbox"/>	<input type="checkbox"/>	
Are custody seals present on each sample container? (if so, document in comments if they are signed and dated, broken or intact)	<input type="checkbox"/>	<input checked="" type="checkbox"/>	<input type="checkbox"/>	
Were all samples received intact ⁽¹⁾ ?	<input checked="" type="checkbox"/>	<input type="checkbox"/>	<input type="checkbox"/>	
Was adequate sample volume provided ⁽¹⁾ ?	<input checked="" type="checkbox"/>	<input type="checkbox"/>	<input type="checkbox"/>	
Are short holding time analytes or samples with HTs due within 48 hours present ⁽¹⁾ ?	<input type="checkbox"/>	<input checked="" type="checkbox"/>	<input type="checkbox"/>	
Is a chain-of-custody (COC) present and filled out completely ⁽¹⁾ ?	<input checked="" type="checkbox"/>	<input type="checkbox"/>	<input type="checkbox"/>	
Does the COC agree with the number and type of sample bottles received ⁽¹⁾ ?	<input checked="" type="checkbox"/>	<input type="checkbox"/>	<input type="checkbox"/>	
Do the sample IDs on the bottle labels match the COC ⁽¹⁾ ?	<input checked="" type="checkbox"/>	<input type="checkbox"/>	<input type="checkbox"/>	
Is the COC properly relinquished by the client with date and time recorded ⁽¹⁾ ?	<input checked="" type="checkbox"/>	<input type="checkbox"/>	<input type="checkbox"/>	
For volatiles in water – is there headspace (> ¼ inch bubble) present? If yes, contact client and note in narrative.	<input type="checkbox"/>	<input type="checkbox"/>	<input checked="" type="checkbox"/>	
Are samples preserved that require preservation and was it checked ⁽¹⁾ ? (note ID of confirmation instrument used in comments) / (preservation is not confirmed for subcontracted analyses in order to insure sample integrity) / (pH < 2 for samples preserved with HNO ₃ , HCL, H ₂ SO ₄) / (pH > 10 for samples preserved with NaAsO ₂ -NaOH, ZnAc+NaOH)	<input type="checkbox"/>	<input type="checkbox"/>	<input checked="" type="checkbox"/>	
Additional Comments (if any):				

⁽¹⁾ If NO, then contact the client before proceeding with analysis and note date/time and person contacted as well as the corrective action to in the additional comments (above) and the case narrative.

Reviewed by (Project Manager) JB

3-22-12
Date/Time Reviewed

Origins Laboratory, Inc.

J. Bynon

The results in this report apply to the samples analyzed in accordance with the chain of custody document. This analytical report must be reproduced in its entirety.

Eagle Environmental Consulting, Inc.

8000 W 44th Ave

Wheat Ridge CO 80033

Martin C Eckert III

Project Number: [none]

Project: Noble - Fuego C #1-19

Background-01@1'

2/23/2022 12:00:00PM

Analyte	Result	Reporting	Units	Dilution	Batch	Analyst	Prepared	Analyzed	Notes
		Limit							

Y203481-01 (Soil)

Waypoint Analytical, LLC.

Total Metals by 6020B

Arsenic	3.03	0.25	mg/Kg	5	L606626	03/23/2022	03/25/2022
Barium	139	0.25	"	"	"	"	"
Selenium	0.752	0.25	"	"	"	"	"

Origins Laboratory, Inc.



The results in this report apply to the samples analyzed in accordance with the chain of custody document. This analytical report must be reproduced in its entirety.

Eagle Environmental Consulting, Inc.
8000 W 44th Ave
Wheat Ridge CO 80033

Martin C Eckert III
Project Number: [none]
Project: Noble - Fuego C #1-19

Total Metals by 6020B - Quality Control Waypoint Analytical, LLC.

Analyte	Result	Reporting Limit	Units	Spike Level	Source Result	%REC	%REC Limits	RPD	RPD Limit	Notes
Batch L606626 - 3050B										
MSD (L 93978-MSD-L606626)			Source: 93978		Prepared: 03/23/2022 Analyzed: 03/29/2022					
Selenium	4.83	0.103	mg/Kg dry	4.78	1.06	79	75-125	5.5	80	
Barium	72.6	0.042	"	4.78	59.9	266	75-125	11.2	80	*
Arsenic	2.33	0.0855	"	2.39	0.535	75	75-125	9.4	80	
MS (L 93978-MS-L606626)			Source: 93978		Prepared: 03/23/2022 Analyzed: 03/29/2022					
Selenium	4.57	0.103	mg/Kg dry	4.64	1.06	76	75-125			
Barium	64.9	0.042	"	4.64	59.9	108	75-125			
Arsenic	2.12	0.0855	"	2.32	0.535	68	75-125			*
LCS (LCS-L606626)			Prepared: 03/23/2022 Analyzed: 03/29/2022							
Selenium	4.97	0.103	mg/Kg	5		99	80-120			
Barium	4.81	0.042	"	5		96	80-120			
Arsenic	2.39	0.0855	"	2.5		96	80-120			
LRB (LRB-L606626)			Prepared: 03/23/2022 Analyzed: 03/29/2022							
Selenium	ND	0.25	mg/Kg				-			
Barium	ND	0.25	"				-			
Arsenic	ND	0.25	"				-			

Origins Laboratory, Inc.



The results in this report apply to the samples analyzed in accordance with the chain of custody document. This analytical report must be reproduced in its entirety.

Eagle Environmental Consulting, Inc.

8000 W 44th Ave

Wheat Ridge CO 80033

Martin C Eckert III

Project Number: [none]

Project: Noble - Fuego C #1-19

Notes and Definitions

* QC Failure

ND Analyte NOT DETECTED at or above the reporting limit

RPD Relative Percent Difference

All soil results are reported at a wet weight basis.

Origins Laboratory, Inc.



The results in this report apply to the samples analyzed in accordance with the chain of custody document. This analytical report must be reproduced in its entirety.