

COGCC



99999999

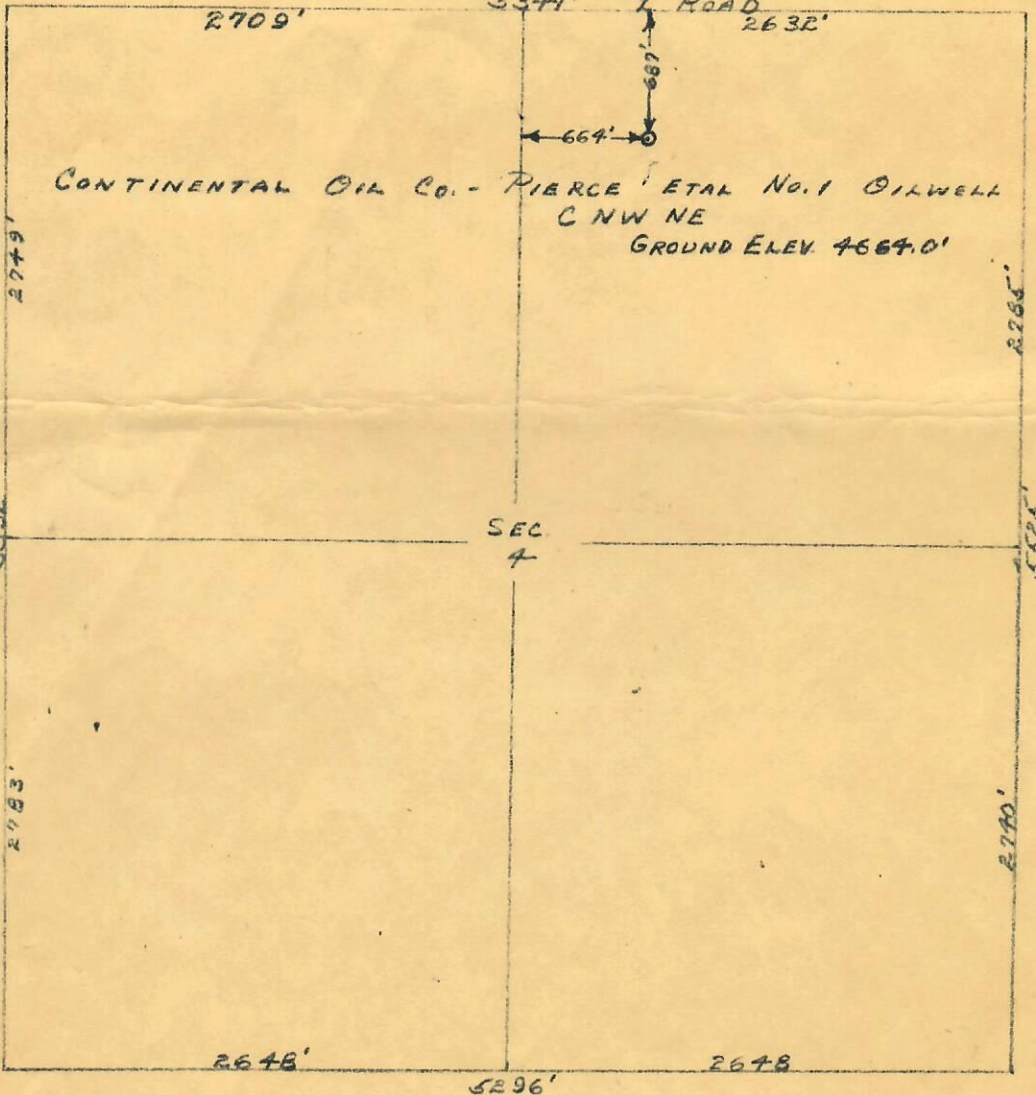
CERTIFICATE OF SURVEY
for
Continental Oil Co.

T3S R56W 6 PM.

12105739

CONSERVATION COMMISSION
OIL & GAS
JAN 27 1955

2 ROAD



SCALE 1" = 1000'

I hereby certify that the above plat is an accurate representation of a correct survey showing the location of Continental Oil Co. - Pierce Etal No. 1 Oilwell located in the CNW 1/4 Sec. 4 T3S R56W 6 PM. The elevation of the ground at the stake is 4664.0 feet above sea level from U.S.C. & G. Bench Mark.

Fort Morgan, Colorado
January 14, 1955

Registered Professional Engineer
State of Colorado



00400664

