

Inspection Photos

Location Name: TEP ROCKY MOUNTAIN LLC CLOUGH 14-22 pad

Location ID: 335218



Photo # 3621 From entrance to location



Photo # 3622 From entrance to location

Inspection Photos

Location Name: TEP ROCKY MOUNTAIN LLC CLOUGH 14-22 pad

Location ID: 335218



Photo # 3623 From entrance to location



Photo # 3624 Location



Inspection Photos

Location Name: TEP ROCKY MOUNTAIN LLC CLOUGH 14-22 pad

Location ID: 335218



Photo # 3625 Location



Photo # 3626 Location



Inspection Photos

Location Name: TEP ROCKY MOUNTAIN LLC CLOUGH 14-22 pad

Location ID: 335218



Photo # 3627 Location

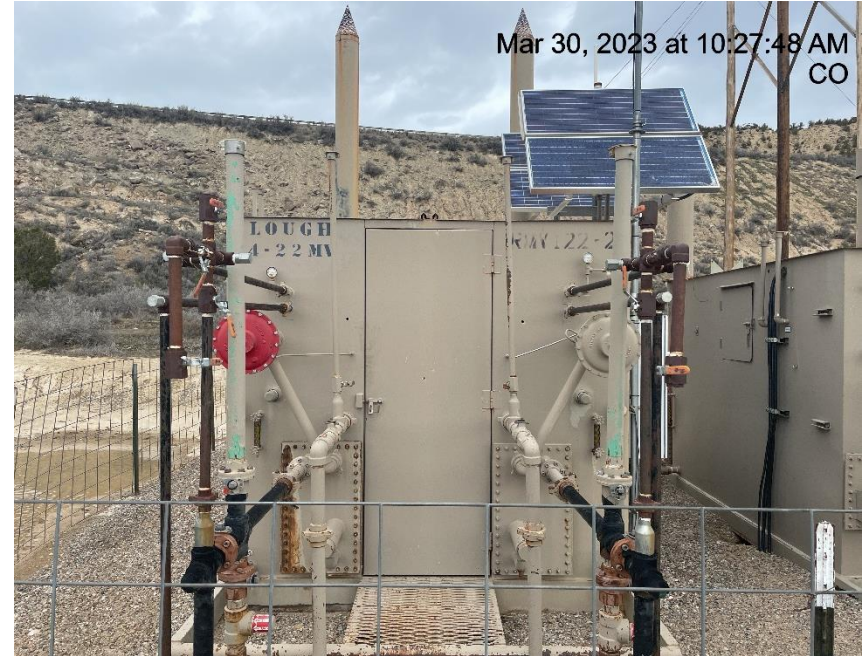


Photo # 3631 Meter calibration info not conspicuously posted

Inspection Photos

Location Name: TEP ROCKY MOUNTAIN LLC CLOUGH 14-22 pad

Location ID: 335218



Photo # 3632 Meter calibration info not conspicuously posted



Photo # 3641 Insufficient run on controls/BMP's & transport of sediment onto location (NW side of pad)

Inspection Photos

Location Name: TEP ROCKY MOUNTAIN LLC CLOUGH 14-22 pad

Location ID: 335218



Photo # 3643 Insufficient run on controls/BMP's & transport of sediment onto location/sediment choking off vegetation (NW side of pad)



Photo # 3645 Insufficient run on controls/BMP's & transport of sediment onto location/sediment choking off vegetation (NW side of pad)

Inspection Photos

Location Name: TEP ROCKY MOUNTAIN LLC CLOUGH 14-22 pad

Location ID: 335218



Photo # 3646 Insufficient run on controls/BMP's & transport of sediment onto location/sediment choking off vegetation (NW side of pad)



Photo # 3647 Insufficient run on controls/BMP's & transport of sediment onto location/sediment choking off vegetation/Rill erosion (W/NW side of pad)

Inspection Photos

Location Name: TEP ROCKY MOUNTAIN LLC CLOUGH 14-22 pad

Location ID: 335218



Photo # 3653 Insufficient run on controls/BMP's & transport of sediment onto location/sediment choking off vegetation/Rill erosion (NW side of pad)



Photo # 3655 Insufficient run on controls/BMP's & transport of sediment onto location/sediment choking off vegetation/Rill erosion (NW side of pad)

Inspection Photos

Location Name: TEP ROCKY MOUNTAIN LLC CLOUGH 14-22 pad

Location ID: 335218



Photo # 3657 Rill erosion & transport of sediment onto location



Photo # 3660 Tunnel erosion

Inspection Photos

Location Name: TEP ROCKY MOUNTAIN LLC CLOUGH 14-22 pad

Location ID: 335218



Photo # 3662 Rill erosion & transport of sediment onto location



Photo # 3663 Rill erosion & transport of sediment onto location

Inspection Photos

Location Name: TEP ROCKY MOUNTAIN LLC CLOUGH 14-22 pad

Location ID: 335218



Photo # 3664 Rill erosion & transport of sediment onto location



Photo # 3669 Rill erosion (SE side of pad)



COLORADO
Oil & Gas Conservation
Commission
Department of Natural Resources

Inspection Photos

Location Name: TEP ROCKY MOUNTAIN LLC CLOUGH 14-22 pad

Location ID: 335218



Photo # 3671 Sediment trap needs maintenance (SE corner of pad)



Photo # 3675 Rill erosion (south side of pad)

Inspection Photos

Location Name: TEP ROCKY MOUNTAIN LLC CLOUGH 14-22 pad

Location ID: 335218



Photo # 3681 Sediment Trap needs maintenance (SW side of pad)



Photo # 3684 Sediment Trap needs maintenance (SW side of pad)

Inspection Photos

Location Name: TEP ROCKY MOUNTAIN LLC CLOUGH 14-22 pad

Location ID: 335218



Photo # 3688 Rill erosion (SW side of pad)



Photo # 3703 Culvert needs maintenance (1/10th mile down access road)

Inspection Photos

Location Name: TEP ROCKY MOUNTAIN LLC CLOUGH 14-22 pad

Location ID: 335218



Photo From Inspection 700704723 conducted 11/21/2022



Photo # 3692 Lack of stabilization/Insufficient tracking BMP's on location

Inspection Photos

Location Name: TEP ROCKY MOUNTAIN LLC CLOUGH 14-22 pad

Location ID: 335218



Photo From Inspection 700704723 conducted 11/21/2022



Photo # 3693 Lack of stabilization/Insufficient tracking
BMP's on location

Inspection Photos

Location Name: TEP ROCKY MOUNTAIN LLC CLOUGH 14-22 pad

Location ID: 335218



**Photo # 3689 Lack of stabilization/Insufficient tracking
BMP's on location**



**Photo # 3690 Lack of stabilization/Insufficient tracking
BMP's on location**

Inspection Photos

Location Name: TEP ROCKY MOUNTAIN LLC CLOUGH 14-22 pad

Location ID: 335218

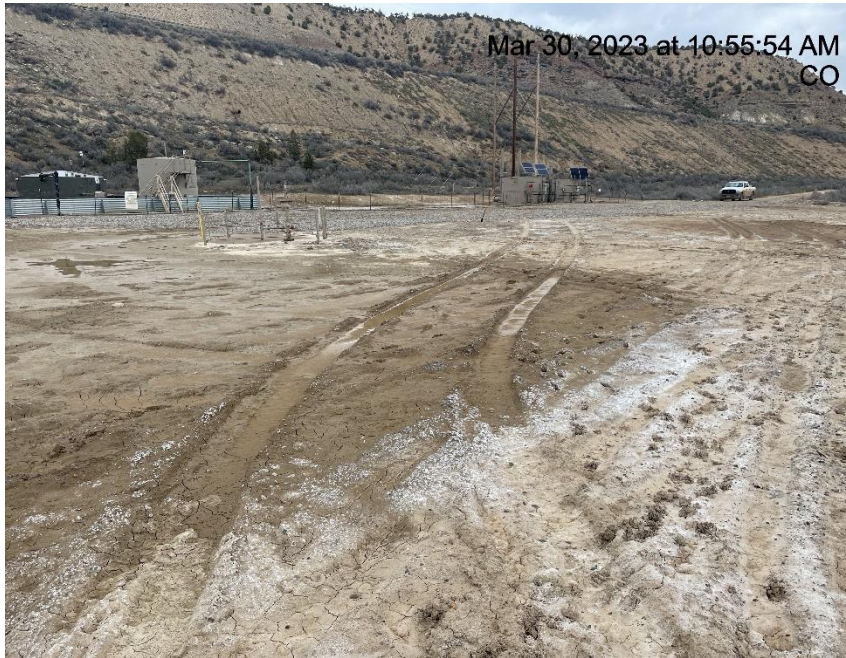


Photo # 3691 Lack of stabilization/Insufficient tracking BMP's on location



Photo # 3695 Lack of stabilization/Insufficient tracking BMP's on access road



COLORADO
Oil & Gas Conservation
Commission
Department of Natural Resources

Inspection Photos

Location Name: TEP ROCKY MOUNTAIN LLC CLOUGH 14-22 pad

Location ID: 335218



Photo From Inspection 700704723 conducted 11/21/2022



Photo # 3696 Lack of stabilization/Insufficient tracking BMP's on access road

Inspection Photos

Location Name: TEP ROCKY MOUNTAIN LLC CLOUGH 14-22 pad

Location ID: 335218



**Photo # 3698 Lack of stabilization/Insufficient tracking
BMP's on access road**



**Photo # 3700 Lack of stabilization/Insufficient tracking
BMP's on access road**



COLORADO
Oil & Gas Conservation
Commission
Department of Natural Resources