

**TEP Rocky Mountain LLC
ExxonMobil MV 29-27
Location #323789**

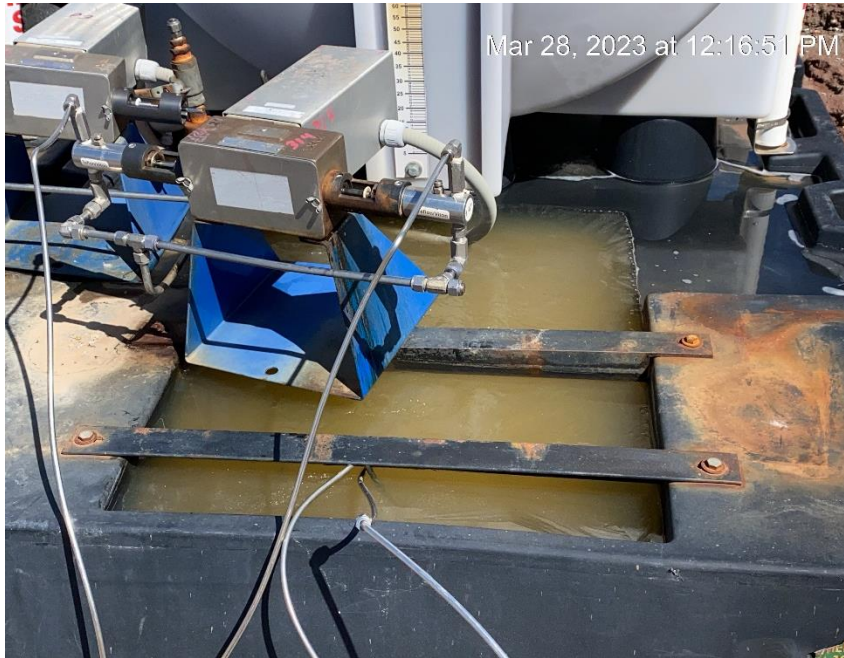


South view from entrance to location



West view toward location entrance

TEP Rocky Mountain LLC
ExxonMobil MV 29-27
Location #323789



Chemical containment full



Chemical containment full

TEP Rocky Mountain LLC
ExxonMobil MV 29-27
Location #323789

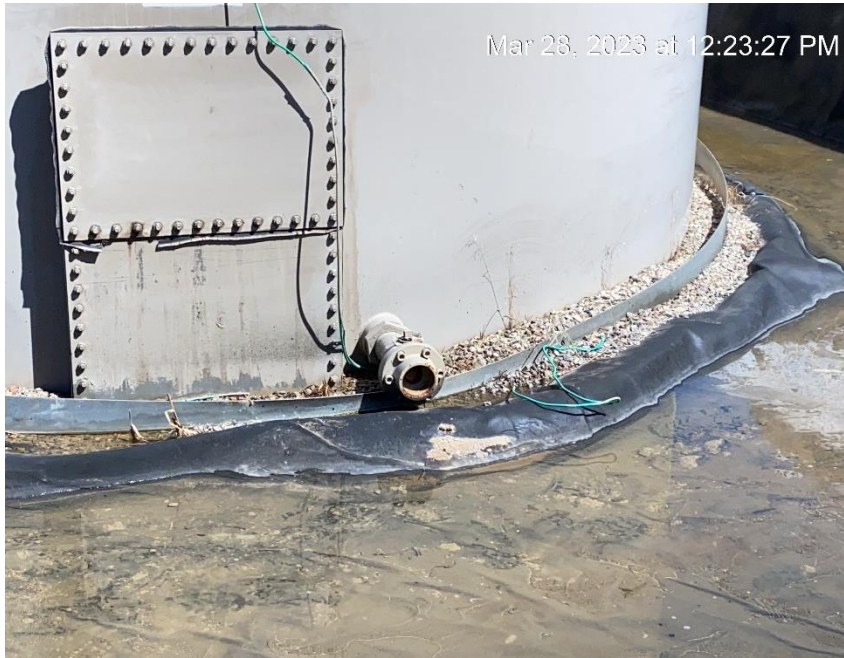


Open end tank valves. Random debris



Open end tank valve

**TEP Rocky Mountain LLC
ExxonMobil MV 29-27
Location #323789**



Open end tank valve



Random debris outside tank containment

TEP Rocky Mountain LLC
ExxonMobil MV 29-27
Location #323789



Random debris inside tank containment



Sign at tank battery

**TEP Rocky Mountain LLC
ExxonMobil MV 29-27
Location #323789**



Gas meter calibration card not conspicuously posted.



Gas meter calibration card not conspicuously posted.



COLORADO
Oil & Gas Conservation
Commission
Department of Natural Resources

**TEP Rocky Mountain LLC
ExxonMobil MV 29-27
Location #323789**



Gas meter calibration card not conspicuously posted.



Chemical containment full



COLORADO
Oil & Gas Conservation
Commission
Department of Natural Resources

**TEP Rocky Mountain LLC
ExxonMobil MV 29-27
Location #323789**



Lack of stabilization



Location drainage off location



**TEP Rocky Mountain LLC
ExxonMobil MV 29-27
Location #323789**



Erosion ditch coming off location



Sediment trap full. Erosion and sediment migration

**TEP Rocky Mountain LLC
ExxonMobil MV 29-27
Location #323789**



Lease road entrance at Wheeler Gulch Road



Lease road entrance at Wheeler Gulch Road