

**TEP Rocky Mountain LLC
Mobil GM 24-27
Location #335397**



North view from entrance to location



South view from entrance to location

TEP Rocky Mountain LLC
Mobil GM 24-27
Location #335397



Open mousehole



Open mousehole



TEP Rocky Mountain LLC

Mobil GM 24-27

Location #335397



Open mouseholes



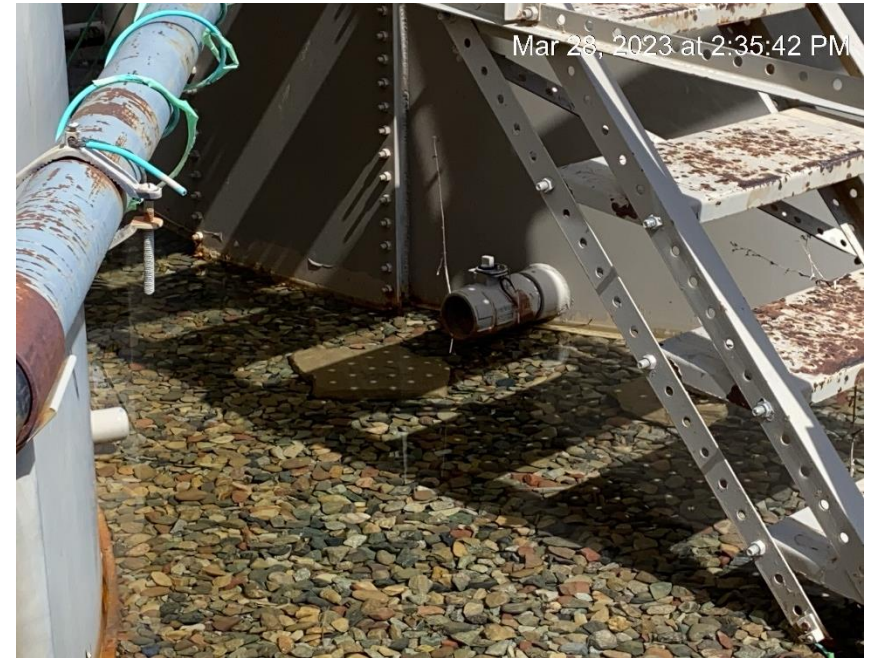
Sign at tank battery



TEP Rocky Mountain LLC
Mobil GM 24-27
Location #335397



Open end tank valve



Open end tank valve

TEP Rocky Mountain LLC
Mobil GM 24-27
Location #335397



Open end tank valve



Open end tank valve

**TEP Rocky Mountain LLC
Mobil GM 24-27
Location #335397**



Open end tank valve



Gas meter calibration card not conspicuously posted.



**TEP Rocky Mountain LLC
Mobil GM 24-27
Location #335397**



Gas meter calibration card not conspicuously posted.



Gas meter calibration card not conspicuously posted.



COLORADO
Oil & Gas Conservation
Commission
Department of Natural Resources

**TEP Rocky Mountain LLC
Mobil GM 24-27
Location #335397**



Random debris



Random debris



TEP Rocky Mountain LLC
Mobil GM 24-27
Location #335397



Random debris



Random debris

**TEP Rocky Mountain LLC
Mobil GM 24-27
Location #335397**



Sediment migration



Sediment migration