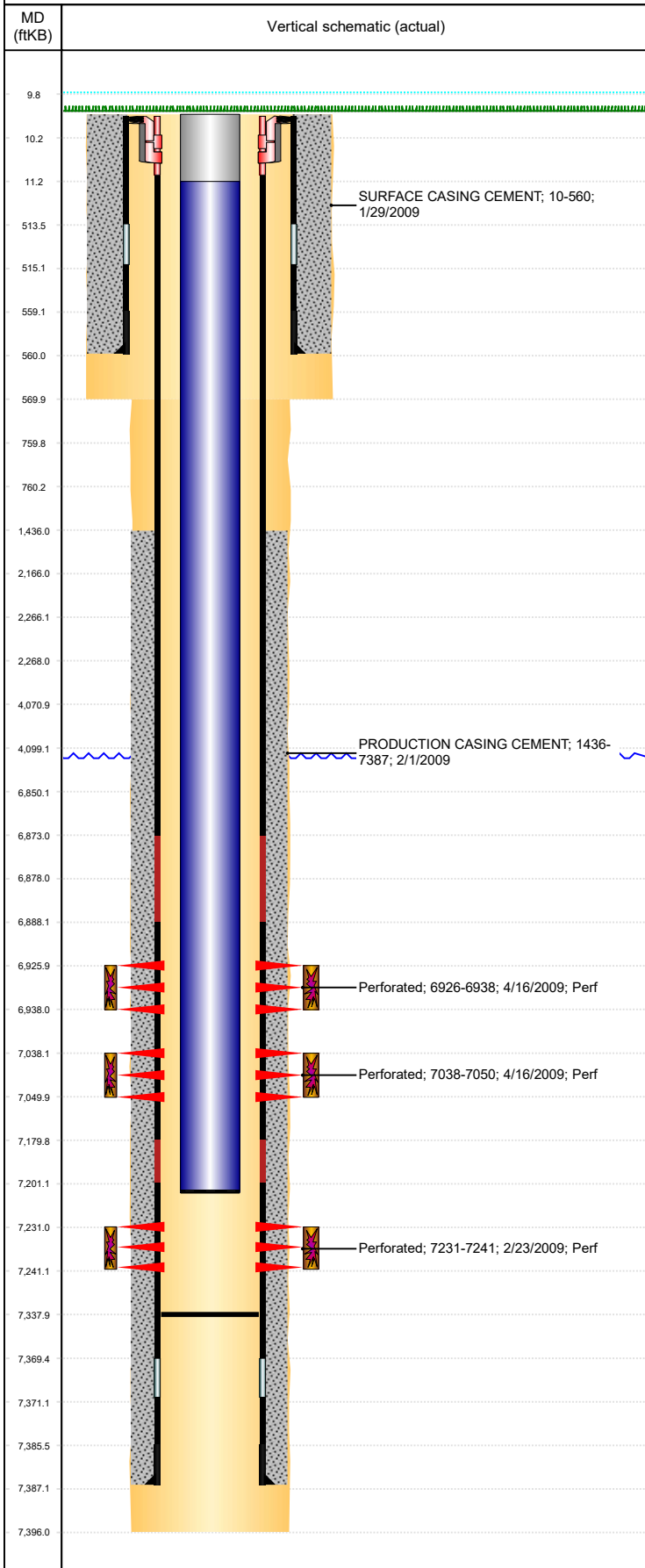




P&A Wellbore For State

Well Name: **BASEBALL K11-19**

Land, Original Hole, 3/28/2023 10:23:42 AM



Well Header

Surface UWI 0512325461		Business Unit Rockies		Gov Auth Dist		Prod Tree Loc Land			
Orig. KB to Gnd (ft) 10.00		Original Spud Date 1/28/2009		Abandon Date		Well Sub-Status SI		High... N	
Comment									

Surface Location (Congressional)

Qtr 3 SE	Qtr 4 NW	Section 11	Twonshp 4	Twonsh... N	Range 66	Rng E... W	Latitude (°) 40.32981650 5	Longitude (°) -104.748676916
-------------	-------------	---------------	--------------	----------------	-------------	---------------	----------------------------------	---------------------------------

Wellbore Sections

Section Des	Hole Size (in)	Act Top (ftKB)	Act Btm (ftKB)
SURFACE	9 7/8	10.0	570.0
PRODUCTION	6 1/4	570.0	7,396.0

Casing Strings

Csg Des	Run Date	OD (in)	Wt/Len (lb/ft)	Grade	Top Depth (MD) (ftKB)	Set Depth (MD) (ftKB)
Surface	1/29/2009	7	17.00	H-40	10	560
Production Casing	2/1/2009	4 1/2	11.60	M-80	10	7387

Cement

Des	Start Date	Top (ftKB)	Btm (ftKB)
SURFACE CASING CEMENT	1/29/2009	10.0	560.0
PRODUCTION CASING CEMENT	2/1/2009	1,436.0	7,387.0

Zone Statuses

Zone Name	Status Date	Status	Fluid Type	Job	Prod Method
NIOBRARA	4/17/2009	PR		DRILLING/COMPLETION - ORIGINAL, 1/27/2009...	
NIOBRARA	1/27/2010	PR			Flowing
CODELL	1/27/2010	PR			Flowing
CODELL	7/30/2015	PR			

Perforation Data

Linked Zone	Explosive Type	Entered Shot Total	Top (ftKB)	Btm (ftKB)	Date
NIOBRARA, Original Hole	A	24	6,926.0	6,938.0	4/16/2009
NIOBRARA, Original Hole	B	24	7,038.0	7,050.0	4/16/2009
CODELL, Original Hole	1	40	7,231.0	7,241.0	2/23/2009

Stimulation Intervals

Zone	Start Date	Top (ftKB)	Btm (ftKB)
NIOBRARA, Original Hole	4/16/2009	6,926.0	6,938.0
NIOBRARA, Original Hole	4/16/2009	7,038.0	7,050.0
CODELL, Original Hole	4/16/2009	7,231.0	7,241.0

Other In Hole

Run Date	Des	Make	OD (in)	Top (ftKB)	Btm (ftKB)

Logs

Date	Type	Depth Top (MD) (ftKB)	Btm (ftKB)
2/1/2009	Caliper/Comp. Density/Neutron/GR/SP/ML	2,500	7,376.0
2/1/2009	DIL/GR/SP/Caliper	560	7,396.0
2/18/2009	CBL/CCL/GR/VDL	1,076	7,333.0

Plug Back Total Depths

Date	Type	Com	PBTD (ftKB)
5/7/2009	PLUG REMNANTS		7,339
11/20/2009	FILL		7,338