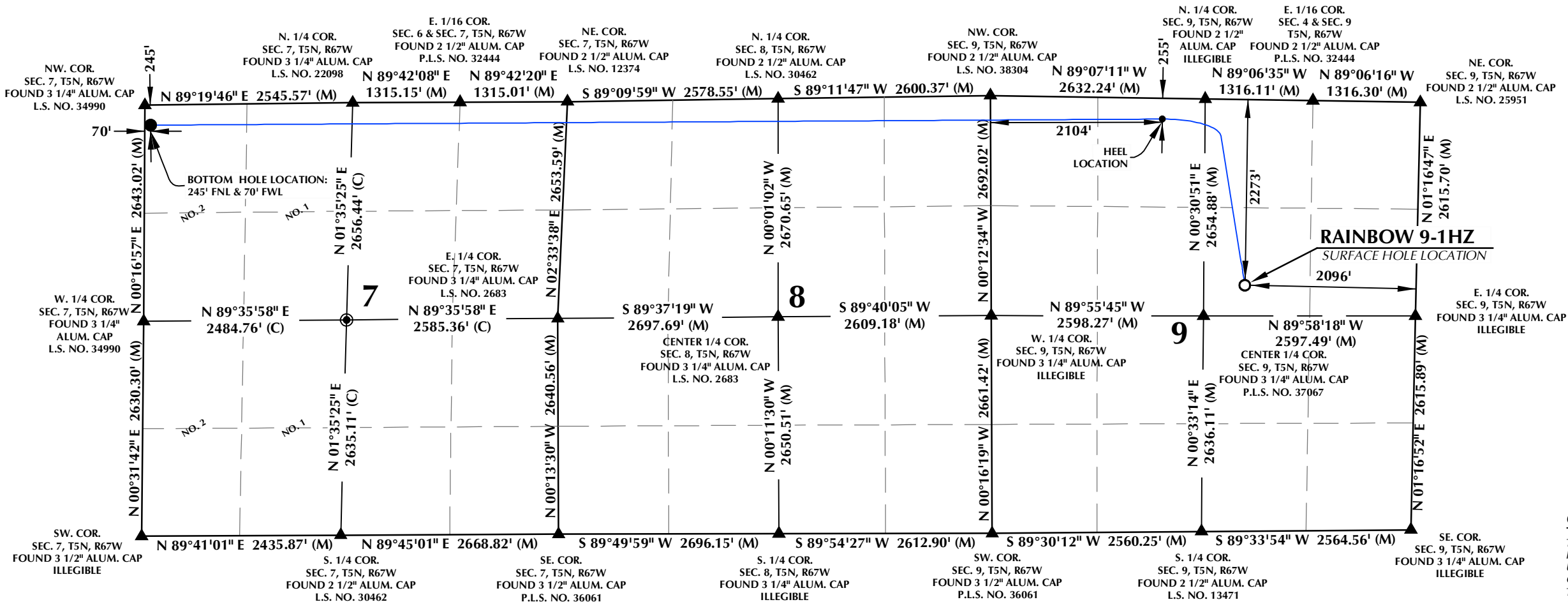


T5N, R67W



SURFACE HOLE LOCATION: NAD 83  
GROUND ELEVATION= 4949.4'  
LATITUDE= 40.415144°  
LONGITUDE= -104.895999°  
HEEL LOCATION: NAD 83  
LATITUDE= 40.420747°  
LONGITUDE= -104.899586°  
BOTTOM HOLE LOCATION: NAD 83  
LATITUDE= 40.420764°  
LONGITUDE= -104.944089°  
LATITUDE= 40°25'14.688"  
LONGITUDE= -104°53'58.510"

CERTIFICATE OF SURVEYOR:

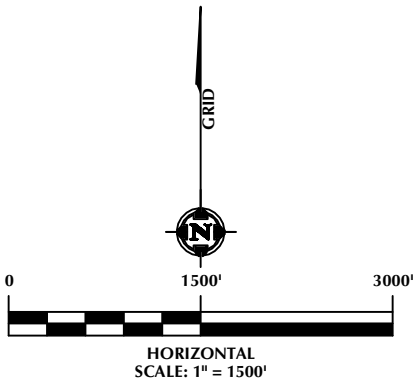
THIS IS TO CERTIFY THAT THE ABOVE PLAT WAS PREPARED FROM FIELD NOTES OF ACTUAL SURVEYS MADE BY ME OR UNDER MY SUPERVISION AND THAT THE SAME ARE TRUE AND CORRECT TO THE BEST OF MY KNOWLEDGE AND BELIEF. THIS CERTIFICATE DOES NOT REPRESENT A LAND SURVEY PLAT OR IMPROVEMENT SURVEY PLAT AS DEFINED BY C.R.S. 38-51-102 AND CANNOT BE RELIED UPON TO DETERMINE OWNERSHIP.

*Randall K. French*  
RANDALL K. FRENCH  
PROFESSIONAL LAND SURVEYOR  
COLORADO REGISTRATION NUMBER 38512

NOTICE:  
ACCORDING TO COLORADO STATE LAW YOU MUST OBTAIN A LEGAL ACTION BASED UPON ANY DEFECT IN THIS SURVEY WITHIN THREE YEARS AFTER YOU FIRST DISCOVER SUCH DEFECT. IN NO EVENT MAY ANY ACTION BASED UPON ANY DEFECT IN THIS SURVEY BE COMMENCED MORE THAN TEN YEARS FROM THE DATE ON THE CERTIFICATION SHOWN HEREON.

NOTES:

- ▲ INDICATES SECTION CORNER.
- INDICATES CALCULATED CORNER.
- ELEVATION BASED ON NAVD88 (GEOID12B).
- BASIS OF BEARINGS DERIVED FROM COLORADO COORDINATE SYSTEM OF 1983, NORTH ZONE.
- ALL MEASURED DISTANCES ARE GRID.  
COMBINED SCALE FACTOR: .99972675 CALCULATED FROM THE E. 1/4 CORNER OF SECTION 9, T5N, R67W.
- OPERATOR: TOBY OSBORN / PDOP = 1.7.
- WELL FOOTAGES ARE MEASURED AT RIGHT ANGLES TO THE SECTION LINES.



LOVELAND OFFICE  
6706 North Franklin Avenue  
Loveland, Colorado 80538  
Phone 970-776-4331  
SHERIDAN OFFICE  
1095 Saberton Avenue  
Sheridan, Wyoming 82801  
Phone 307-674-0609

**Kerr-McGee Oil &  
Gas Onshore LP**  
1099 18th Street  
Denver, Colorado 80202

WELL PAD - RAINBOW 24-9HZ

**RAINBOW 9-1HZ  
WELL LOCATION CERTIFICATE**  
2273' FNL & 2096' FEL (SWNE) (SURFACE HOLE LOCATION)  
255' FNL & 2104' FWL (NENW) (HEEL LOCATION)  
LOCATED IN SECTION 9  
245' FNL & 70' FWL LOT 2 (NWNW) (BOTTOM HOLE LOCATION)  
LOCATED IN SECTION 7  
T5N, R67W, 6TH P.M.  
WELD COUNTY, COLORADO

DRAFTED BY:	SJM	CHECKED BY:	RKF
DATE DRAFTED:	3/21/23	DATE SURVEYED:	2/21/22
REVISED:		FILE NAME:	18-160