



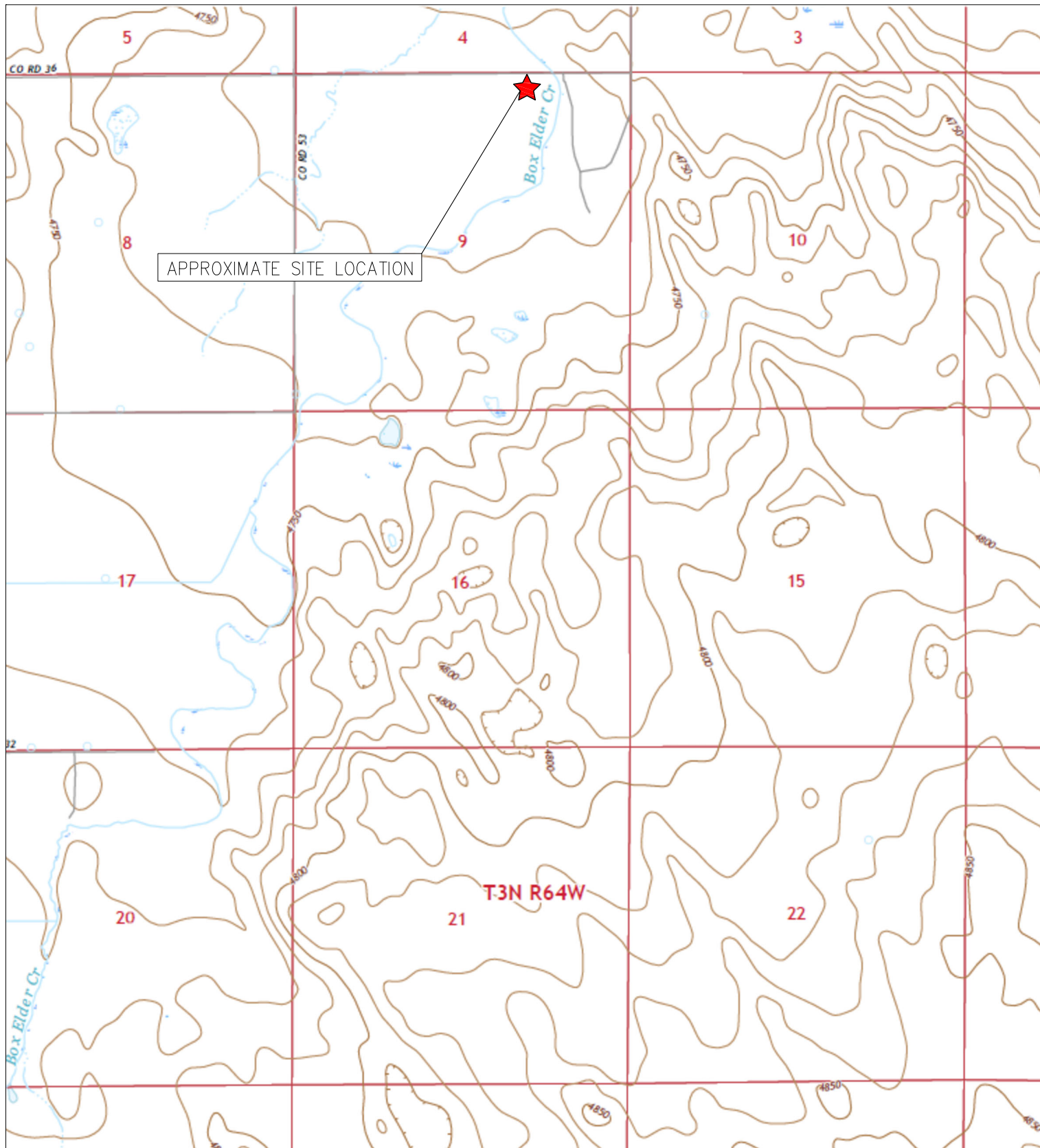
FIGURES

Figure 1: Topographic Site Location Map

Figure 2: Aerial Site Location Map

Figure 3: Soil Analytical Map

Figure 4: Polycyclic Aromatic Hydrocarbons Analytical Map



TOPOGRAPHIC SITE LOCATION MAP
 FRONT RANGE D #09-28
 CLOSURE ASSESSMENT
 40.246688 / -104.555994
 NW¼ NE¼ SEC.9 T3N R64W 6PM
 WELD COUNTY, COLORADO
 API # 05-123-27115
 REMEDIATION # 25946



EAGLE
 ENVIRONMENTAL
 CONSULTING, LLC

8000 W 44th Ave, Wheat Ridge, CO 80033
 Ph: 303-433-0479 • F: 303-325-5449

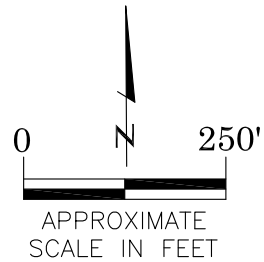
SOURCE: USGS 7.5 MINUTE TOPOGRAPHIC MAP
 KLUG RANCH, CO QUADRANGLE 2022

FIGURE NO. 1



LEGEND

- FRONT RANGE D #09-28 WELLHEAD
- ASSOCIATED SEPARATOR (REMOVED)
- APPROXIMATE FLOWLINE LOCATION (REMOVED)



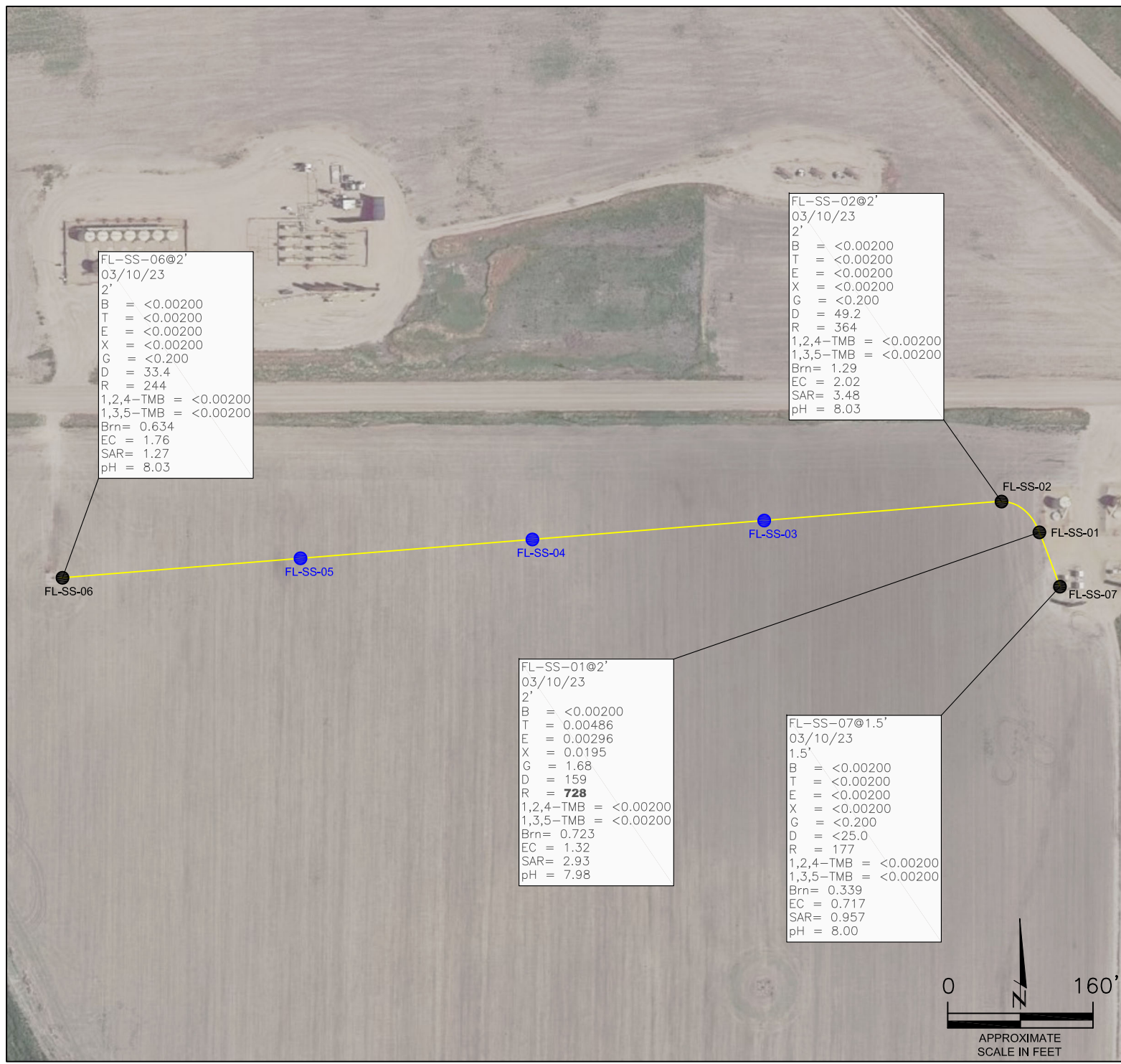
AERIAL SITE LOCATION MAP
 FRONT RANGE D #09-28
 CLOSURE ASSESSMENT
 40.246688 / -104.555994
 NW¼ NE¼ SEC.9 T3N R64W 6PM
 WELD COUNTY, COLORADO
 API # 05-123-27115
 REMEDIATION # 25946

FIGURE NO.
2

DRAWN BY:
GEC



EAGLE
 ENVIRONMENTAL
 CONSULTING, LLC
 8000 W 44th Ave, Wheat Ridge, CO 80033
 Ph: 303-433-0479 • F: 303-325-5449



FL-SS-06@2'
03/10/23
2'
B = <0.00200
T = <0.00200
E = <0.00200
X = <0.00200
G = <0.200
D = 33.4
R = 244
1,2,4-TMB = <0.00200
1,3,5-TMB = <0.00200
Brn = 0.634
EC = 1.76
SAR = 1.27
pH = 8.03

FL-SS-02@2'
03/10/23
2'
B = <0.00200
T = <0.00200
E = <0.00200
X = <0.00200
G = <0.200
D = 49.2
R = 364
1,2,4-TMB = <0.00200
1,3,5-TMB = <0.00200
Brn = 1.29
EC = 2.02
SAR = 3.48
pH = 8.03

FL-SS-01@2'
03/10/23
2'
B = <0.00200
T = 0.00486
E = 0.00296
X = 0.0195
G = 1.68
D = 159
R = **728**
1,2,4-TMB = <0.00200
1,3,5-TMB = <0.00200
Brn = 0.723
EC = 1.32
SAR = 2.93
pH = 7.98

FL-SS-07@1.5'
03/10/23
1.5'
B = <0.00200
T = <0.00200
E = <0.00200
X = <0.00200
G = <0.200
D = <25.0
R = 177
1,2,4-TMB = <0.00200
1,3,5-TMB = <0.00200
Brn = 0.339
EC = 0.717
SAR = 0.957
pH = 8.00

LEGEND

- APPROXIMATE FLOWLINE LOCATION (REMOVED)
- APPROXIMATE LOCATION OF SOIL SAMPLES FIELD SCREENED, ONLY, WITH PHOTOIONIZATION DETECTOR
- APPROXIMATE LOCATION OF SOIL SAMPLES SUBMITTED FOR LABORATORY ANALYSIS

PARAMETERS

SAMPLE LOCATION
DATE
DEPTH (FEET)
B = BENZENE (mg/kg)
T = TOLUENE (mg/kg)
E = ETHYLBENZENE (mg/kg)
X = TOTAL XYLENES (mg/kg)
G = TPH-GRO (mg/kg)
D = TPH-DRO (mg/kg)
R = TPH-RRO (mg/kg)
1,2,4-TMB = 1,2,4 TRIMETHYLBENZENE (mg/kg)
1,3,5-TMB = 1,3,5 TRIMETHYLBENZENE (mg/kg)
Brn = BORON (mg/L)
EC = SPECIFIC CONDUCTANCE (mmhos/cm)
SAR = SODIUM ADSORPTION RATIO
pH = pH (pH UNITS)

mg/kg = MILLIGRAMS PER KILOGRAM
mg/L = MILLIGRAMS PER LITER
mmhos/cm = MILLIMHOS PER CENTIMETER

TPH-GRO = TOTAL PETROLEUM HYDROCARBONS - GASOLINE RANGE ORGANICS
TPH-DRO = TOTAL PETROLEUM HYDROCARBONS - DIESEL RANGE ORGANICS
TPH-RRO = TOTAL PETROLEUM HYDROCARBONS - RESIDUAL RANGE ORGANICS

NOTES:
VALUES PRESENTED WITH A LESS THAN SYMBOL (<) DID NOT CONTAIN CONCENTRATIONS AT OR ABOVE LABORATORY DETECTION LIMITS

VALUES PRESENTED IN **BOLD** EXCEED COGCC TABLE 915-1 REGULATORY LIMITS

COGCC = COLORADO OIL AND GAS CONSERVATION COMMISSION

SOIL ANALYTICAL MAP
FRONT RANGE D #09-28
CLOSURE ASSESSMENT
40.246688 / -104.555994
NW¼ NE¼ SEC.9 T3N R64W 6PM
WELD COUNTY, COLORADO
API # 05-123-27115
REMEDATION # 25946

FIGURE NO.
3

DRAWN BY:
GEC



EAGLE
ENVIRONMENTAL
CONSULTING, LLC
8000 W 44th Ave, Wheat Ridge, CO 80033
Ph: 303-433-0479 • F: 303-325-5449

LEGEND

- APPROXIMATE FLOWLINE LOCATION (REMOVED)
- SS-02 APPROXIMATE LOCATION OF SOIL SAMPLES FIELD SCREENED, ONLY, WITH PHOTOIONIZATION DETECTOR
- SS-02 APPROXIMATE LOCATION OF SOIL SAMPLES SUBMITTED FOR LABORATORY ANALYSIS

PARAMETERS

SAMPLE LOCATION
DATE SAMPLE COLLECTED
APPROXIMATE DEPTH

POLYCYCLIC AROMATIC HYDROCARBONS (PAHs) (mg/kg)

mg/kg = MILLIGRAMS PER KILOGRAM

ND = NON-DETECT

NOTES:
VALUES PRESENTED WITH A LESS THAN SYMBOL (<) DID NOT CONTAIN CONCENTRATIONS AT OR ABOVE LABORATORY DETECTION LIMITS

VALUES PRESENTED IN **BOLD** EXCEED COGCC TABLE 915-1 REGULATORY LIMITS

VALUES PRESENTED WITH AN ASTERISK (*) EXCEED COGCC TABLE 915-1 GROUNDWATER SOIL SCREENING LEVELS, ONLY.

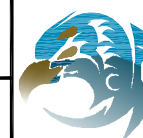
COGCC = COLORADO OIL AND GAS CONSERVATION COMMISSION

POLYCYCLIC AROMATIC HYDROCARBONS MAP

FRONT RANGE D #09-28
CLOSURE ASSESSMENT
40.246688 / -104.555994
NW¼ NE¼ SEC.9 T3N R64W 6PM
WELD COUNTY, COLORADO
API # 05-123-27115
REMEDATION # 25946

FIGURE NO.
4

DRAWN BY:
GEC



EAGLE
ENVIRONMENTAL
CONSULTING, LLC
8000 W 44th Ave, Wheat Ridge, CO 80033
Ph: 303-433-0479 • F: 303-325-5449

FL-SS-06@2'
03/10/23
2'

1-Methylnaphthalene = <0.00201
2-Methylnaphthalene = <0.00201
Acenaphthene = 0.00151
Anthracene = 0.00192
Benzo(a)anthracene = 0.0025
Benzo(a)pyrene = 0.00279
Benzo(b)fluoranthene = 0.0014
Benzo(k)fluoranthene = 0.00123
Chrysene = 0.0034
Dibenzo(a,h)anthracene = <0.00067
Fluoranthene = 0.00873
Fluorene = 0.00211
Indeno(1,2,3-CD)pyrene = 0.00122
Naphthalene = <0.00201
Pyrene = 0.00655

FL-SS-02@2'
03/10/23
2'

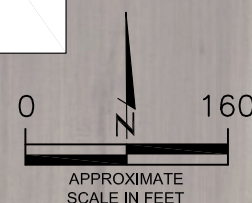
1-Methylnaphthalene = 0.00596
2-Methylnaphthalene = 0.0102
Acenaphthene = 0.0484
Anthracene = 0.0717
Benzo(a)anthracene = **0.0837***
Benzo(a)pyrene = 0.0569
Benzo(b)fluoranthene = 0.0612
Benzo(k)fluoranthene = 0.022
Chrysene = 0.0933
Dibenzo(a,h)anthracene = 0.0105
Fluoranthene = 0.228
Fluorene = 0.0601
Indeno(1,2,3-CD)pyrene = 0.0249
Naphthalene = **0.0276***
Pyrene = 0.164

FL-SS-01@2'
03/10/23
2'

1-Methylnaphthalene = **0.0171***
2-Methylnaphthalene = **0.0285***
Acenaphthene = 0.138
Anthracene = 0.193
Benzo(a)anthracene = **0.227***
Benzo(a)pyrene = **0.153**
Benzo(b)fluoranthene = 0.175
Benzo(k)fluoranthene = 0.0655
Chrysene = 0.267
Dibenzo(a,h)anthracene = 0.0251
Fluoranthene = 0.58
Fluorene = 0.173
Indeno(1,2,3-CD)pyrene = 0.0711
Naphthalene = **0.074***
Pyrene = 0.458

FL-SS-07@1.5'
03/10/23
1.5'

1-Methylnaphthalene = <0.00201
2-Methylnaphthalene = <0.00201
Acenaphthene = 0.00568
Anthracene = 0.00937
Benzo(a)anthracene = 0.00957
Benzo(a)pyrene = 0.00614
Benzo(b)fluoranthene = 0.00549
Benzo(k)fluoranthene = 0.00365
Chrysene = 0.0106
Dibenzo(a,h)anthracene = 0.000731
Fluoranthene = 0.0315
Fluorene = 0.00717
Indeno(1,2,3-CD)pyrene = 0.00288
Naphthalene = 0.00269
Pyrene = 0.0238





ATTACHMENT A

Photolog

Front Range D #09-28

API # 05-123-27115

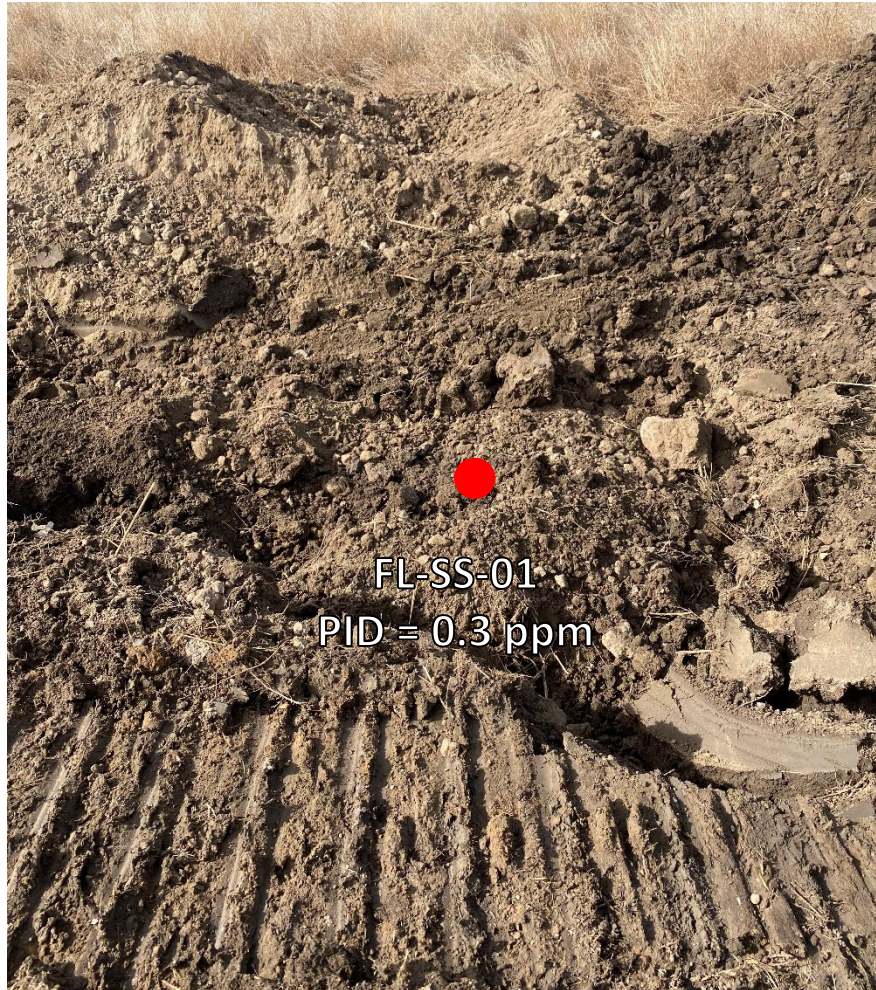
Remediation # 25946

Closure Assessment

March 2023



Flowline Removal/Assessment – 03/10/23



Looking west at directional change – lab submitted

No petroleum hydrocarbon staining or odor observed



Looking west at directional change – lab submitted

No petroleum hydrocarbon staining or odor observed

Flowline Removal/Assessment – 03/10/23



Looking west at bellhole/cut-point for removal – field screened

No petroleum hydrocarbon staining or odor observed



Looking west at bellhole/cut-point for removal – field screened

No petroleum hydrocarbon staining or odor observed

Flowline Removal/Assessment – 03/10/23



Looking west at bellhole/cut-point for removal – field screened

No petroleum hydrocarbon staining or odor observed



Looking west at flowline terminus/Pt. A at wellhead – lab submitted

No petroleum hydrocarbon staining or odor observed

Flowline Removal/Assessment – 03/10/23



Looking west at flowline terminus/Pt. B at separator – lab submitted

No petroleum hydrocarbon staining or odor observed



ATTACHMENT B

Laboratory Analytical Report



March 23, 2023

Eagle Environmental Consulting, LLC

Martin C Eckert III

8000 W 44th Ave

Wheat Ridge CO 80033

Project Name - Noble - Front Range D #09-28

Project Number - [none]

Attached are your analytical results for Noble - Front Range D #09-28 received by Origins Laboratory, Inc. March 10, 2023. This project is associated with Origins project number Y303267-01.

The analytical results in the following report were analyzed under the guidelines of EPA Methods. These methods are identified as follows; "SW" are defined in SW-846, "EPA" are defined in 40CFR part 136 and "SM" are defined in the most current revision of Standard Methods For the Examination of Water and Wastewater.

The analytical results apply specifically to the samples and analyses specified per the attached Chain of Custody. As such, this report shall not be reproduced except in full, without the written approval of Origin's laboratory.

Unless otherwise noted, the analytical results for all soil samples are reported on a wet weight basis. All analytical analyses were performed under NELAP guidelines unless noted by a data qualifier.

Any holding time exceedances, deviations from the method specifications or deviations from Origins Laboratory's Standard Operating Procedures are outlined in the case narrative.

Thank you for selecting Origins for your analytical needs. Please contact us with any questions concerning this report, or if we can help with anything at all.

Origins Laboratory, Inc.
303.433.1322
o-squad@oelabinc.com



1725 Elk Place, Denver, CO 80211 | Phone: 303.433.1322 | Fax: 303.265.9645

Eagle Environmental Consulting, LLC
8000 W 44th Ave
Wheat Ridge CO 80033

Martin C Eckert III
Project Number: [none]
Project: Noble - Front Range D #09-28

CROSS REFERENCE REPORT

Sample ID	Laboratory ID	Matrix	Date Sampled	Date Received
FL-SS-01@2'	Y303267-01	Soil	March 10, 2023 10:00	03/10/2023 12:40
FL-SS-02@2'	Y303267-02	Soil	March 10, 2023 10:05	03/10/2023 12:40
FL-SS-06@2'	Y303267-03	Soil	March 10, 2023 10:25	03/10/2023 12:40
FL-SS-07@1.5'	Y303267-04	Soil	March 10, 2023 11:35	03/10/2023 12:40

Origins Laboratory, Inc.



The results in this report apply to the samples analyzed in accordance with the chain of custody document. This analytical report must be reproduced in its entirety.

Eagle Environmental Consulting, LLC
8000 W 44th Ave
Wheat Ridge CO 80033

Martin C Eckert III
Project Number: [none]
Project: Noble - Front Range D #09-28

www.originslaboratory.com

4303267

ORIGINS
LABORATORY, INC

page 1 of 1

Client: Eagle Environmental Consulting
Address: 8000 W 44th Ave
Wheat Ridge, CO 80033
Telephone Number: 303-433-0479
Email Address: mce3@eagle-enviro.com

Project Manager: Martin Eckert III
Project Name: Front Range D #09-28
Project Number: -
Samples Collected By: CT

Fax: 303.265.9645

Sample ID Description	Date Sampled	Time Sampled	# of Containers	Preservative				Matrix		Analysis				Sample Instructions
				Unpreserved	HCl	HNO ₃	Other	Groundwater	Soil	Air Summa Canister #	Other	6.876, 7.11, 7.14, 7.15, 7.16, 7.17, 7.18, 7.19, 7.20, 7.21, 7.22, 7.23, 7.24, 7.25, 7.26, 7.27, 7.28, 7.29, 7.30, 7.31, 7.32, 7.33, 7.34, 7.35, 7.36, 7.37, 7.38, 7.39, 7.40, 7.41, 7.42, 7.43, 7.44, 7.45, 7.46, 7.47, 7.48, 7.49, 7.50, 7.51, 7.52, 7.53, 7.54, 7.55, 7.56, 7.57, 7.58, 7.59, 7.60, 7.61, 7.62, 7.63, 7.64, 7.65, 7.66, 7.67, 7.68, 7.69, 7.70, 7.71, 7.72, 7.73, 7.74, 7.75, 7.76, 7.77, 7.78, 7.79, 7.80, 7.81, 7.82, 7.83, 7.84, 7.85, 7.86, 7.87, 7.88, 7.89, 7.90, 7.91, 7.92, 7.93, 7.94, 7.95, 7.96, 7.97, 7.98, 7.99, 8.00, 8.01, 8.02, 8.03, 8.04, 8.05, 8.06, 8.07, 8.08, 8.09, 8.10, 8.11, 8.12, 8.13, 8.14, 8.15, 8.16, 8.17, 8.18, 8.19, 8.20, 8.21, 8.22, 8.23, 8.24, 8.25, 8.26, 8.27, 8.28, 8.29, 8.30, 8.31, 8.32, 8.33, 8.34, 8.35, 8.36, 8.37, 8.38, 8.39, 8.40, 8.41, 8.42, 8.43, 8.44, 8.45, 8.46, 8.47, 8.48, 8.49, 8.50, 8.51, 8.52, 8.53, 8.54, 8.55, 8.56, 8.57, 8.58, 8.59, 8.60, 8.61, 8.62, 8.63, 8.64, 8.65, 8.66, 8.67, 8.68, 8.69, 8.70, 8.71, 8.72, 8.73, 8.74, 8.75, 8.76, 8.77, 8.78, 8.79, 8.80, 8.81, 8.82, 8.83, 8.84, 8.85, 8.86, 8.87, 8.88, 8.89, 8.90, 8.91, 8.92, 8.93, 8.94, 8.95, 8.96, 8.97, 8.98, 8.99, 9.00, 9.01, 9.02, 9.03, 9.04, 9.05, 9.06, 9.07, 9.08, 9.09, 9.10, 9.11, 9.12, 9.13, 9.14, 9.15, 9.16, 9.17, 9.18, 9.19, 9.20, 9.21, 9.22, 9.23, 9.24, 9.25, 9.26, 9.27, 9.28, 9.29, 9.30, 9.31, 9.32, 9.33, 9.34, 9.35, 9.36, 9.37, 9.38, 9.39, 9.40, 9.41, 9.42, 9.43, 9.44, 9.45, 9.46, 9.47, 9.48, 9.49, 9.50, 9.51, 9.52, 9.53, 9.54, 9.55, 9.56, 9.57, 9.58, 9.59, 9.60, 9.61, 9.62, 9.63, 9.64, 9.65, 9.66, 9.67, 9.68, 9.69, 9.70, 9.71, 9.72, 9.73, 9.74, 9.75, 9.76, 9.77, 9.78, 9.79, 9.80, 9.81, 9.82, 9.83, 9.84, 9.85, 9.86, 9.87, 9.88, 9.89, 9.90, 9.91, 9.92, 9.93, 9.94, 9.95, 9.96, 9.97, 9.98, 9.99, 10.00, 10.01, 10.02, 10.03, 10.04, 10.05, 10.06, 10.07, 10.08, 10.09, 10.10, 10.11, 10.12, 10.13, 10.14, 10.15, 10.16, 10.17, 10.18, 10.19, 10.20, 10.21, 10.22, 10.23, 10.24, 10.25, 10.26, 10.27, 10.28, 10.29, 10.30, 10.31, 10.32, 10.33, 10.34, 10.35, 10.36, 10.37, 10.38, 10.39, 10.40, 10.41, 10.42, 10.43, 10.44, 10.45, 10.46, 10.47, 10.48, 10.49, 10.50, 10.51, 10.52, 10.53, 10.54, 10.55, 10.56, 10.57, 10.58, 10.59, 10.60, 10.61, 10.62, 10.63, 10.64, 10.65, 10.66, 10.67, 10.68, 10.69, 10.70, 10.71, 10.72, 10.73, 10.74, 10.75, 10.76, 10.77, 10.78, 10.79, 10.80, 10.81, 10.82, 10.83, 10.84, 10.85, 10.86, 10.87, 10.88, 10.89, 10.90, 10.91, 10.92, 10.93, 10.94, 10.95, 10.96, 10.97, 10.98, 10.99, 11.00, 11.01, 11.02, 11.03, 11.04, 11.05, 11.06, 11.07, 11.08, 11.09, 11.10, 11.11, 11.12, 11.13, 11.14, 11.15, 11.16, 11.17, 11.18, 11.19, 11.20, 11.21, 11.22, 11.23, 11.24, 11.25, 11.26, 11.27, 11.28, 11.29, 11.30, 11.31, 11.32, 11.33, 11.34, 11.35, 11.36, 11.37, 11.38, 11.39, 11.40, 11.41, 11.42, 11.43, 11.44, 11.45, 11.46, 11.47, 11.48, 11.49, 11.50, 11.51, 11.52, 11.53, 11.54, 11.55, 11.56, 11.57, 11.58, 11.59, 11.60, 11.61, 11.62, 11.63, 11.64, 11.65, 11.66, 11.67, 11.68, 11.69, 11.70, 11.71, 11.72, 11.73, 11.74, 11.75, 11.76, 11.77, 11.78, 11.79, 11.80, 11.81, 11.82, 11.83, 11.84, 11.85, 11.86, 11.87, 11.88, 11.89, 11.90, 11.91, 11.92, 11.93, 11.94, 11.95, 11.96, 11.97, 11.98, 11.99, 12.00, 12.01, 12.02, 12.03, 12.04, 12.05, 12.06, 12.07, 12.08, 12.09, 12.10, 12.11, 12.12, 12.13, 12.14, 12.15, 12.16, 12.17, 12.18, 12.19, 12.20, 12.21, 12.22, 12.23, 12.24, 12.25, 12.26, 12.27, 12.28, 12.29, 12.30, 12.31, 12.32, 12.33, 12.34, 12.35, 12.36, 12.37, 12.38, 12.39, 12.40, 12.41, 12.42, 12.43, 12.44, 12.45, 12.46, 12.47, 12.48, 12.49, 12.50, 12.51, 12.52, 12.53, 12.54, 12.55, 12.56, 12.57, 12.58, 12.59, 12.60, 12.61, 12.62, 12.63, 12.64, 12.65, 12.66, 12.67, 12.68, 12.69, 12.70, 12.71, 12.72, 12.73, 12.74, 12.75, 12.76, 12.77, 12.78, 12.79, 12.80, 12.81, 12.82, 12.83, 12.84, 12.85, 12.86, 12.87, 12.88, 12.89, 12.90, 12.91, 12.92, 12.93, 12.94, 12.95, 12.96, 12.97, 12.98, 12.99, 13.00, 13.01, 13.02, 13.03, 13.04, 13.05, 13.06, 13.07, 13.08, 13.09, 13.10, 13.11, 13.12, 13.13, 13.14, 13.15, 13.16, 13.17, 13.18, 13.19, 13.20, 13.21, 13.22, 13.23, 13.24, 13.25, 13.26, 13.27, 13.28, 13.29, 13.30, 13.31, 13.32, 13.33, 13.34, 13.35, 13.36, 13.37, 13.38, 13.39, 13.40, 13.41, 13.42, 13.43, 13.44, 13.45, 13.46, 13.47, 13.48, 13.49, 13.50, 13.51, 13.52, 13.53, 13.54, 13.55, 13.56, 13.57, 13.58, 13.59, 13.60, 13.61, 13.62, 13.63, 13.64, 13.65, 13.66, 13.67, 13.68, 13.69, 13.70, 13.71, 13.72, 13.73, 13.74, 13.75, 13.76, 13.77, 13.78, 13.79, 13.80, 13.81, 13.82, 13.83, 13.84, 13.85, 13.86, 13.87, 13.88, 13.89, 13.90, 13.91, 13.92, 13.93, 13.94, 13.95, 13.96, 13.97, 13.98, 13.99, 14.00, 14.01, 14.02, 14.03, 14.04, 14.05, 14.06, 14.07, 14.08, 14.09, 14.10, 14.11, 14.12, 14.13, 14.14, 14.15, 14.16, 14.17, 14.18, 14.19, 14.20, 14.21, 14.22, 14.23, 14.24, 14.25, 14.26, 14.27, 14.28, 14.29, 14.30, 14.31, 14.32, 14.33, 14.34, 14.35, 14.36, 14.37, 14.38, 14.39, 14.40, 14.41, 14.42, 14.43, 14.44, 14.45, 14.46, 14.47, 14.48, 14.49, 14.50, 14.51, 14.52, 14.53, 14.54, 14.55, 14.56, 14.57, 14.58, 14.59, 14.60, 14.61, 14.62, 14.63, 14.64, 14.65, 14.66, 14.67, 14.68, 14.69, 14.70, 14.71, 14.72, 14.73, 14.74, 14.75, 14.76, 14.77, 14.78, 14.79, 14.80, 14.81, 14.82, 14.83, 14.84, 14.85, 14.86, 14.87, 14.88, 14.89, 14.90, 14.91, 14.92, 14.93, 14.94, 14.95, 14.96, 14.97, 14.98, 14.99, 15.00, 15.01, 15.02, 15.03, 15.04, 15.05, 15.06, 15.07, 15.08, 15.09, 15.10, 15.11, 15.12, 15.13, 15.14, 15.15, 15.16, 15.17, 15.18, 15.19, 15.20, 15.21, 15.22, 15.23, 15.24, 15.25, 15.26, 15.27, 15.28, 15.29, 15.30, 15.31, 15.32, 15.33, 15.34, 15.35, 15.36, 15.37, 15.38, 15.39, 15.40, 15.41, 15.42, 15.43, 15.44, 15.45, 15.46, 15.47, 15.48, 15.49, 15.50, 15.51, 15.52, 15.53, 15.54, 15.55, 15.56, 15.57, 15.58, 15.59, 15.60, 15.61, 15.62, 15.63, 15.64, 15.65, 15.66, 15.67, 15.68, 15.69, 15.70, 15.71, 15.72, 15.73, 15.74, 15.75, 15.76, 15.77, 15.78, 15.79, 15.80, 15.81, 15.82, 15.83, 15.84, 15.85, 15.86, 15.87, 15.88, 15.89, 15.90, 15.91, 15.92, 15.93, 15.94, 15.95, 15.96, 15.97, 15.98, 15.99, 16.00, 16.01, 16.02, 16.03, 16.04, 16.05, 16.06, 16.07, 16.08, 16.09, 16.10, 16.11, 16.12, 16.13, 16.14, 16.15, 16.16, 16.17, 16.18, 16.19, 16.20, 16.21, 16.22, 16.23, 16.24, 16.25, 16.26, 16.27, 16.28, 16.29, 16.30, 16.31, 16.32, 16.33, 16.34, 16.35, 16.36, 16.37, 16.38, 16.39, 16.40, 16.41, 16.42, 16.43, 16.44, 16.45, 16.46, 16.47, 16.48, 16.49, 16.50, 16.51, 16.52, 16.53, 16.54, 16.55, 16.56, 16.57, 16.58, 16.59, 16.60, 16.61, 16.62, 16.63, 16.64, 16.65, 16.66, 16.67, 16.68, 16.69, 16.70, 16.71, 16.72, 16.73, 16.74, 16.75, 16.76, 16.77, 16.78, 16.79, 16.80, 16.81, 16.82, 16.83, 16.84, 16.85, 16.86, 16.87, 16.88, 16.89, 16.90, 16.91, 16.92, 16.93, 16.94, 16.95, 16.96, 16.97, 16.98, 16.99, 17.00, 17.01, 17.02, 17.03, 17.04, 17.05, 17.06, 17.07, 17.08, 17.09, 17.10, 17.11, 17.12, 17.13, 17.14, 17.15, 17.16, 17.17, 17.18, 17.19, 17.20, 17.21, 17.22, 17.23, 17.24, 17.25, 17.26, 17.27, 17.28, 17.29, 17.30, 17.31, 17.32, 17.33, 17.34, 17.35, 17.36, 17.37, 17.38, 17.39, 17.40, 17.41, 17.42, 17.43, 17.44, 17.45, 17.46, 17.47, 17.48, 17.49, 17.50, 17.51, 17.52, 17.53, 17.54, 17.55, 17.56, 17.57, 17.58, 17.59, 17.60, 17.61, 17.62, 17.63, 17.64, 17.65, 17.66, 17.67, 17.68, 17.69, 17.70, 17.71, 17.72, 17.73, 17.74, 17.75, 17.76, 17.77, 17.78, 17.79, 17.80, 17.81, 17.82, 17.83, 17.84, 17.85, 17.86, 17.87, 17.88, 17.89, 17.90, 17.91, 17.92, 17.93, 17.94, 17.95, 17.96, 17.97, 17.98, 17.99, 18.00, 18.01, 18.02, 18.03, 18.04, 18.05, 18.06, 18.07, 18.08, 18.09, 18.10, 18.11, 18.12, 18.13, 18.14, 18.15, 18.16, 18.17, 18.18, 18.19, 18.20, 18.21, 18.22, 18.23, 18.24, 18.25, 18.26, 18.27, 18.28, 18.29, 18.30, 18.31, 18.32, 18.33, 18.34, 18.35, 18.36, 18.37, 18.38, 18.39, 18.40, 18.41, 18.42, 18.43, 18.44, 18.45, 18.46, 18.47, 18.48, 18.49, 18.50, 18.51, 18.52, 18.53, 18.54, 18.55, 18.56, 18.57, 18.58, 18.59, 18.60, 18.61, 18.62, 18.63, 18.64, 18.65, 18.66, 18.67, 18.68, 18.69, 18.70, 18.71, 18.72, 18.73, 18.74, 18.75, 18.76, 18.77, 18.78, 18.79, 18.80, 18.81, 18.82, 18.83, 18.84, 18.85, 18.86, 18.87, 18.88, 18.89, 18.90, 18.91, 18.92, 18.93, 18.94, 18.95, 18.96, 18.97, 18.98, 18.99, 19.00, 19.01, 19.02, 19.03, 19.04, 19.05, 19.06, 19.07, 19.08, 19.09, 19.10, 19.11, 19.12, 19.13, 19.14, 19.15, 19.16, 19.17, 19.18, 19.19, 19.20, 19.21, 19.22, 19.23, 19.24, 19.25, 19.26, 19.27, 19.28, 19.29, 19.30, 19.31, 19.32, 19.33, 19.34, 19.35, 19.36, 19.37, 19.38, 19.39, 19.40, 19.41, 19.42, 19.43, 19.44, 19.45, 19.46, 19.47, 19.48, 19.49, 19.50, 19.51, 19.52, 19.53, 19.54, 19.55, 19.56, 19.57, 19.58, 19.59, 19.60, 19.61, 19.62, 19.63, 19.64, 19.65, 19.66, 19.67, 19.68, 19.69, 19.70, 19.71, 19.72, 19.73, 19.74, 19.75, 19.76, 19.77, 19.78, 19.79, 19.80, 19.81, 19.82, 19.83, 19.84, 19.85, 19.86, 19.87, 19.88, 19.89, 19.90, 19.91, 19.92, 19.93, 19.94, 19.95, 19.96, 19.97, 19.98, 19.99, 20.00, 20.01, 20.02, 20.03, 20.04, 20.05, 20.06, 20.07, 20.08, 20.09, 20.10, 20.11, 20.12, 20.13, 20.14, 20.15, 20.16, 20.17, 20.18, 20.19, 20.20, 20.21, 20.22, 20.23, 20.24, 20.25, 20.26, 20.27, 20.28, 20.29, 20.30, 20.31, 20.32, 20.33, 20.34, 20.35, 20.36, 20.37, 20.38, 20.39, 20.40, 20.41, 20.42, 20.43, 20.44, 20.45, 20.46, 20.47, 20.48, 20.49, 20.50, 20.51, 20.52, 20.53, 20.54, 20.55, 20.56, 20.57, 20.58, 20.59, 20.60, 20.61, 20.62, 20.63, 20.64, 20.65, 20.66, 20.67, 20.68, 20.69, 20.70, 20.71, 20.72, 20.73, 20.74, 20.75, 20.76, 20.77, 20.78, 20.79, 20.80, 20.81, 20.82, 20.83, 20.84, 20.85, 20.86, 20.87, 20.88, 20.89, 20.90, 20.91, 20.92, 20.93, 20.94, 20.95, 20.96, 20.97, 20.98, 20.99, 21.00, 21.01, 21.02, 21.03, 21.04, 21.05, 21.06, 21.07, 21.08, 21.09, 21.10, 21.11, 21.12, 21.13, 21.14, 21.15, 21.16, 21.17, 21.18, 21.19, 21.20, 21.21, 21.22, 21.23, 21.24, 21.25, 21.26, 21.27, 21.28, 21.29, 21.30, 21.31, 21.32, 21.33, 21.34, 21.35, 21.36, 21.37, 21.38, 21.39, 21.40, 21.41, 21.42, 21.43, 21.44, 21.45, 21.46, 21.47, 21.48, 21.49, 21.50, 21.51, 21.52, 21.53, 21.54, 21.55, 21.56, 21.57, 21.58, 21.59, 21.60, 21.61, 21.62, 21.63, 21.64, 21.65, 21.66, 21.67, 21.68, 21.69, 21.70, 21.71, 21.72, 21.73, 21.74, 21.75, 21.76, 21.77, 21.78, 21.79, 21.80, 21.81, 21.82, 21.83, 21.84, 21.85, 21.86, 21.87, 21.88, 21.89, 21.90, 21.91, 21.92, 21.93, 21.94, 21.95, 21.96, 21.97, 21.98, 21.99, 22.00, 22.01, 22.02, 22.03, 22.04, 22.05, 22.06, 22.07, 22.08, 22.09, 22.10, 22.11, 22.12, 22.13, 22.14, 22.15, 22.16, 22.17, 22.18, 22.19, 22.20, 22.21, 22.22, 22.23, 22.24, 22.25, 22.26, 22.27, 22.28, 22.29, 22.30, 22.31, 22.32, 22.33, 22.34, 22.35, 22.36, 22.37, 22.38, 22.39, 22.40, 22.41, 22.42, 22.43, 22.44, 22.45, 22.46, 22.47, 22.48, 22.49, 22.50, 22.51, 22.52, 22.53, 22.54, 22.55, 22.56, 22.57, 22.58, 22.59, 22.60, 22.61, 22.62, 22.63, 22.64, 22.65, 22.66, 22.67, 22.68, 22.69, 22.70, 22.71, 22.72, 22.73, 22.74, 22.75, 22.76, 22.77, 22.78, 22.79, 22.80, 22.81, 22.82, 22.83, 22.84, 22.85, 22.86, 22.87, 22.88, 22.89, 22.90, 22.91, 22.92, 22.93, 22.94, 22.95, 22.96, 22.97, 22.98, 22.99, 23.00, 23.01, 23.02, 23.03, 23.04, 23.05, 23.06, 23.07, 23.08, 23.09, 23.10, 23.11, 23.12, 23.13, 23.14, 23.15, 23.16, 23.17, 23.18, 23.19, 23.20, 23.21, 23.22, 23.23, 23.24, 23.25, 23.26, 23.27, 23.28, 23.29, 23.30, 23.31, 23.32, 23.33, 23.34, 23.35, 23.36, 23.37, 23.38, 23.39, 23.40, 23.41, 23.42, 23.43, 23.44, 23.45, 23.46, 23.47, 23.48, 23.49, 23.50, 23.51, 23.52, 23.53, 23.54, 23.55, 23.56, 23.57, 23.58, 23.59, 23.60, 23.61, 23.62, 23.63, 23.64, 23.65, 23.66, 23.67, 23.68, 23.69, 23.70, 23.71, 23.72, 23.73, 23.74, 23.75, 23.76, 23.77, 23.78, 23.79, 23.80, 23.81, 23.82, 23.83, 23.84, 23.85, 23.86, 23.87, 23.88, 23.89, 23.90, 23.91, 23.92, 23.93, 23.94, 23.95, 23.96, 23.97, 23.98, 23.99, 24.00, 24.01, 24.02, 24.03, 24.04, 24.05, 24.06, 24.07, 24.08, 24.09, 24.10,		

Eagle Environmental Consulting, LLC
8000 W 44th Ave
Wheat Ridge CO 80033

Martin C Eckert III
Project Number: [none]
Project: Noble - Front Range D #09-28

Origins Laboratory

F-012207-01-R1
Effective Date: 01/09/12

Sample Receipt Checklist

Origins Work Order: 4303267

Client: Eagle Environmental
Client Project ID: Front Range D #09-28

Checklist Completed by: JM/DE

Shipped Via: TD
(UPS, FedEx, Hand Delivered, Pick-up, etc.)

Date/time completed: 3/10/23

Airbill #: via

Matrix(s) Received: (Check all that apply): ☒ Soil/Solid ☐ Water ☐ Other: _____

Cooler Number/Temperature: 1 / 29 °C _____ / _____ °C _____ / _____ °C (Describe)

Thermometer ID: 7004

Requirement Description	Yes	No	N/A	Comments (if any)
If samples require cooling, was the temperature between 0°C to ≤ 6°C ⁽¹⁾ ?	/			
Is there ice present (document if blue ice is used)	/			
Are custody seals present on cooler? (if so, document in comments if they are signed and dated, broken or intact)			/	
Are custody seals present on each sample container? (if so, document in comments if they are signed and dated, broken or intact)			/	
Were all samples received intact ⁽¹⁾ ?	/			
Was adequate sample volume provided ⁽¹⁾ ?	/			
Are short holding time analytes or samples with HTs due within 48 hours present ⁽¹⁾ ?		/		
Is a chain-of-custody (COC) present and filled out completely ⁽¹⁾ ?	/			
Does the COC agree with the number and type of sample bottles received ⁽¹⁾ ?	/			
Do the sample IDs on the bottle labels match the COC ⁽¹⁾ ?	/			
Is the COC properly relinquished by the client with date and time recorded ⁽¹⁾ ?	/			
For volatiles in water – is there headspace (> ¼ inch bubble) present? If yes, contact client and note in narrative.			/	
Are samples preserved that require preservation and was it checked ⁽¹⁾ ? (note ID of confirmation instrument used in comments) / (preservation is not confirmed for subcontracted analyses in order to insure sample integrity)/(pH <2 for samples preserved with HNO ₃ , HCL, H ₂ SO ₄) / (pH >10 for samples preserved with NaAsO ₂ +NaOH, ZnAc+NaOH)			/	
Additional Comments (if any):				

⁽¹⁾ If NO, then contact the client before proceeding with analysis and note date/time and person contacted as well as the corrective action to in the additional comments (above) and the case narrative.

Reviewed by (Project Manager) U81

Date/Time Reviewed 3/10/23

Origins Laboratory, Inc.

J. Bynon

The results in this report apply to the samples analyzed in accordance with the chain of custody document. This analytical report must be reproduced in its entirety.

Eagle Environmental Consulting, LLC
8000 W 44th Ave
Wheat Ridge CO 80033

Martin C Eckert III
Project Number: [none]
Project: Noble - Front Range D #09-28

FL-SS-01@2'

3/10/2023 10:00:00AM

Analyte	Result	Min Detection Limit	Reporting Limit	Units	Dilution	Batch	Prepared	Analyzed	Notes
---------	--------	---------------------	-----------------	-------	----------	-------	----------	----------	-------

Origins Laboratory, Inc.
Y303267-01 (Soil)

Boron (DTPA Sorbitol)

Boron	0.723	0.0989	mg/L	1	B3C1404	03/14/2023	03/15/2023
-------	-------	--------	------	---	---------	------------	------------

DRO/ORO by EPA 8015D

Diesel (C10-C28)	159	25.0	mg/kg	1	B3C1318	03/13/2023	03/16/2023
Residual Range Organics (C28-C40)	728	100	"	"	"	"	"

Surrogate: o-Terphenyl	90.5 %	50-150	"	"	"
------------------------	--------	--------	---	---	---

GBTEX+TMBs by 8260D

1,2,4-Trimethylbenzene	ND	0.00200	mg/kg	1	B3C1524	03/15/2023	03/18/2023	U
1,3,5-Trimethylbenzene	ND	0.00200	"	"	"	"	"	U
Benzene	ND	0.00200	"	"	"	"	"	U
Ethylbenzene	0.00296	0.00200	"	"	"	"	"	
Toluene	0.00486	0.00200	"	"	"	"	"	
Xylenes, total	0.0195	0.00200	"	"	"	"	"	
Gasoline Range Hydrocarbons	1.68	0.200	"	"	"	"	"	

Surrogate: 1,2-Dichloroethane-d4	109 %	70-130	"	"	"
Surrogate: Toluene-d8	96.7 %	70-130	"	"	"
Surrogate: 4-Bromofluorobenzene	98.5 %	70-130	"	"	"

Origins Laboratory, Inc.



The results in this report apply to the samples analyzed in accordance with the chain of custody document. This analytical report must be reproduced in its entirety.

Eagle Environmental Consulting, LLC
8000 W 44th Ave
Wheat Ridge CO 80033

Martin C Eckert III
Project Number: [none]
Project: Noble - Front Range D #09-28

FL-SS-01@2'

3/10/2023 10:00:00AM

Analyte	Result	Min Detection Limit	Reporting Limit	Units	Dilution	Batch	Prepared	Analyzed	Notes
---------	--------	---------------------	-----------------	-------	----------	-------	----------	----------	-------

Origins Laboratory, Inc.
Y303267-01 (Soil)

Metals by Saturated Paste by EPA 6010

Calcium	4.45	0.499	meq/L	10	[CALC]	03/15/2023	03/17/2023
Magnesium	2.24	0.823	"	"	"	"	"
Sodium	5.36	0.435	"	"	"	"	"

PAH by 8270D SIM

1-Methylnaphthalene	0.0171	0.00109	0.00201	mg/Kg	1	L670104	03/16/2023	03/16/2023
2-Methylnaphthalene	0.0285	0.00194	0.00201	"	"	"	"	"
Acenaphthene	0.138	0.000304	0.00067	"	"	"	"	"
Anthracene	0.193	0.000334	0.00067	"	"	"	"	"
Benzo(a)anthracene	0.227	0.000493	0.00067	"	"	"	"	"
Benzo(a)pyrene	0.153	0.000468	0.00067	"	"	"	"	"
Benzo(b)fluoranthene	0.175	0.000585	0.00067	"	"	"	"	"
Benzo(k)fluoranthene	0.0655	0.000437	0.00067	"	"	"	"	"
Chrysene	0.267	0.000624	0.00067	"	"	"	"	"
Dibenz(a,h)anthracene	0.0251	0.000614	0.00067	"	"	"	"	"
Fluoranthene	0.58	0.00197	0.00335	"	5	"	"	"
Fluorene	0.173	0.000286	0.00067	"	1	"	"	"
Indeno(1,2,3-cd)pyrene	0.0711	0.000627	0.00067	"	"	"	"	"
Naphthalene	0.074	0.00145	0.00201	"	"	"	"	"
Pyrene	0.458	0.000643	0.00067	"	"	"	"	"

Origins Laboratory, Inc.



The results in this report apply to the samples analyzed in accordance with the chain of custody document. This analytical report must be reproduced in its entirety.

Eagle Environmental Consulting, LLC
8000 W 44th Ave
Wheat Ridge CO 80033

Martin C Eckert III
Project Number: [none]
Project: Noble - Front Range D #09-28

FL-SS-01@2'

3/10/2023 10:00:00AM

Analyte	Result	Min Detection Limit	Reporting Limit	Units	Dilution	Batch	Prepared	Analyzed	Notes
---------	--------	---------------------	-----------------	-------	----------	-------	----------	----------	-------

Waypoint Analytical, LLC.
Y303267-01 (Soil)

PAH by 8270D SIM

Surrogate: 2-Fluorobiphenyl	44.9 %		33-115			L6701 04	03/16/2023	03/16/2023	
Surrogate: 4-Terphenyl-d14	52.3 %		33-122			"	"	"	
Surrogate: Nitrobenzene-d5	44.9 %		29-110			"	"	"	

pH in Soil by 9045D

pH	7.98			pH Units	1	B3C1515	03/15/2023	03/16/2023	
----	------	--	--	----------	---	---------	------------	------------	--

SAR by 20B Saturated Paste

SAR	2.93			SAR	1	B3C1505	03/15/2023	03/17/2023	
-----	------	--	--	-----	---	---------	------------	------------	--

Specific Conductance Mod. 9050A

Specific Conductance (EC)	1.32		0.00500	mmhos/cm	1	B3C1515	03/15/2023	03/22/2023	
---------------------------	------	--	---------	----------	---	---------	------------	------------	--

Origins Laboratory, Inc.



The results in this report apply to the samples analyzed in accordance with the chain of custody document. This analytical report must be reproduced in its entirety.

Eagle Environmental Consulting, LLC
8000 W 44th Ave
Wheat Ridge CO 80033

Martin C Eckert III
Project Number: [none]
Project: Noble - Front Range D #09-28

FL-SS-02@2'

3/10/2023 10:05:00AM

Analyte	Result	Min Detection Limit	Reporting Limit	Units	Dilution	Batch	Prepared	Analyzed	Notes
---------	--------	---------------------	-----------------	-------	----------	-------	----------	----------	-------

Origins Laboratory, Inc.
Y303267-02 (Soil)

Boron (DTPA Sorbitol)

Boron	1.29	0.0995	mg/L	1	B3C1404	03/14/2023	03/15/2023
-------	------	--------	------	---	---------	------------	------------

DRO/ORO by EPA 8015D

Diesel (C10-C28)	49.2	25.0	mg/kg	1	B3C1318	03/13/2023	03/16/2023
Residual Range Organics (C28-C40)	364	100	"	"	"	"	"

Surrogate: o-Terphenyl	82.5 %	50-150	"	"	"
------------------------	--------	--------	---	---	---

GBTEX+TMBs by 8260D

1,2,4-Trimethylbenzene	ND	0.00200	mg/kg	1	B3C1524	03/15/2023	03/18/2023	U
1,3,5-Trimethylbenzene	ND	0.00200	"	"	"	"	"	U
Benzene	ND	0.00200	"	"	"	"	"	U
Ethylbenzene	ND	0.00200	"	"	"	"	"	U
Toluene	ND	0.00200	"	"	"	"	"	U
Xylenes, total	ND	0.00200	"	"	"	"	"	U
Gasoline Range Hydrocarbons	ND	0.200	"	"	"	"	"	U

Surrogate: 1,2-Dichloroethane-d4	110 %	70-130	"	"	"
Surrogate: Toluene-d8	97.8 %	70-130	"	"	"

Origins Laboratory, Inc.



The results in this report apply to the samples analyzed in accordance with the chain of custody document. This analytical report must be reproduced in its entirety.

Eagle Environmental Consulting, LLC
8000 W 44th Ave
Wheat Ridge CO 80033

Martin C Eckert III
Project Number: [none]
Project: Noble - Front Range D #09-28

FL-SS-02@2'

3/10/2023 10:05:00AM

Analyte	Result	Min Detection Limit	Reporting Limit	Units	Dilution	Batch	Prepared	Analyzed	Notes
---------	--------	---------------------	-----------------	-------	----------	-------	----------	----------	-------

Origins Laboratory, Inc.
Y303267-02 (Soil)

GBTEX+TMBs by 8260D

Surrogate: 4-Bromofluorobenzene 95.8 % 70-130 B3C15 24 03/15/2023 03/18/2023

Metals by Saturated Paste by EPA 6010

Calcium	8.60	0.499	meq/L	10	[CALC]	03/15/2023	03/17/2023
Magnesium	3.50	0.823	"	"	"	"	"
Sodium	8.56	0.435	"	"	"	"	"

PAH by 8270D SIM

1-Methylnaphthalene	0.00596	0.00109	0.00201	mg/Kg	1	L670104	03/16/2023	03/16/2023
2-Methylnaphthalene	0.0102	0.00194	0.00201	"	"	"	"	"
Acenaphthene	0.0484	0.000304	0.00067	"	"	"	"	"
Anthracene	0.0717	0.000334	0.00067	"	"	"	"	"
Benzo(a)anthracene	0.0837	0.000493	0.00067	"	"	"	"	"
Benzo(a)pyrene	0.0569	0.000468	0.00067	"	"	"	"	"
Benzo(b)fluoranthene	0.0612	0.000585	0.00067	"	"	"	"	"
Benzo(k)fluoranthene	0.022	0.000437	0.00067	"	"	"	"	"
Chrysene	0.0933	0.000624	0.00067	"	"	"	"	"
Dibenz(a,h)anthracene	0.0105	0.000614	0.00067	"	"	"	"	"
Fluoranthene	0.228	0.000394	0.00067	"	"	"	"	"
Fluorene	0.0601	0.000286	0.00067	"	"	"	"	"
Indeno(1,2,3-cd)pyrene	0.0249	0.000627	0.00067	"	"	"	"	"
Naphthalene	0.0276	0.00145	0.00201	"	"	"	"	"

Origins Laboratory, Inc.



The results in this report apply to the samples analyzed in accordance with the chain of custody document. This analytical report must be reproduced in its entirety.

Eagle Environmental Consulting, LLC
8000 W 44th Ave
Wheat Ridge CO 80033

Martin C Eckert III
Project Number: [none]
Project: Noble - Front Range D #09-28

FL-SS-02@2'

3/10/2023 10:05:00AM

Analyte	Result	Min Detection Limit	Reporting Limit	Units	Dilution	Batch	Prepared	Analyzed	Notes
---------	--------	---------------------	-----------------	-------	----------	-------	----------	----------	-------

Waypoint Analytical, LLC.
Y303267-02 (Soil)

PAH by 8270D SIM

Pyrene	0.164	0.000643	0.00067	mg/Kg	1	L670104	03/16/2023	03/16/2023
--------	-------	----------	---------	-------	---	---------	------------	------------

Surrogate: 2-Fluorobiphenyl	49.4 %	33-115	"	"	"
Surrogate: 4-Terphenyl-d14	53.6 %	33-122	"	"	"
Surrogate: Nitrobenzene-d5	49.7 %	29-110	"	"	"

pH in Soil by 9045D

pH	8.03	pH Units	1	B3C1515	03/15/2023	03/16/2023
----	------	----------	---	---------	------------	------------

SAR by 20B Saturated Paste

SAR	3.48	SAR	1	B3C1505	03/15/2023	03/17/2023
-----	------	-----	---	---------	------------	------------

Specific Conductance Mod. 9050A

Specific Conductance (EC)	2.02	0.00500	mmhos/cm	1	B3C1515	03/15/2023	03/22/2023
---------------------------	------	---------	----------	---	---------	------------	------------

Origins Laboratory, Inc.



The results in this report apply to the samples analyzed in accordance with the chain of custody document. This analytical report must be reproduced in its entirety.

Eagle Environmental Consulting, LLC
8000 W 44th Ave
Wheat Ridge CO 80033

Martin C Eckert III
Project Number: [none]
Project: Noble - Front Range D #09-28

FL-SS-06@2'

3/10/2023 10:25:00AM

Analyte	Result	Min Detection Limit	Reporting Limit	Units	Dilution	Batch	Prepared	Analyzed	Notes
---------	--------	---------------------	-----------------	-------	----------	-------	----------	----------	-------

Origins Laboratory, Inc.
Y303267-03 (Soil)

Boron (DTPA Sorbitol)

Boron	0.634	0.0995	mg/L	1	B3C1404	03/14/2023	03/15/2023
-------	-------	--------	------	---	---------	------------	------------

DRO/ORO by EPA 8015D

Diesel (C10-C28)	33.4	25.0	mg/kg	1	B3C1318	03/13/2023	03/16/2023
Residual Range Organics (C28-C40)	244	100	"	"	"	"	"

Surrogate: o-Terphenyl	98.3 %	50-150	"	"	"
------------------------	--------	--------	---	---	---

GBTEX+TMBs by 8260D

1,2,4-Trimethylbenzene	ND	0.00200	mg/kg	1	B3C1524	03/15/2023	03/18/2023	U
1,3,5-Trimethylbenzene	ND	0.00200	"	"	"	"	"	U
Benzene	ND	0.00200	"	"	"	"	"	U
Ethylbenzene	ND	0.00200	"	"	"	"	"	U
Toluene	ND	0.00200	"	"	"	"	"	U
Xylenes, total	ND	0.00200	"	"	"	"	"	U
Gasoline Range Hydrocarbons	ND	0.200	"	"	"	"	"	U

Surrogate: 1,2-Dichloroethane-d4	108 %	70-130	"	"	"
Surrogate: Toluene-d8	97.7 %	70-130	"	"	"

Origins Laboratory, Inc.



The results in this report apply to the samples analyzed in accordance with the chain of custody document. This analytical report must be reproduced in its entirety.

Eagle Environmental Consulting, LLC
8000 W 44th Ave
Wheat Ridge CO 80033

Martin C Eckert III
Project Number: [none]
Project: Noble - Front Range D #09-28

FL-SS-06@2'

3/10/2023 10:25:00AM

Analyte	Result	Min Detection Limit	Reporting Limit	Units	Dilution	Batch	Prepared	Analyzed	Notes
---------	--------	---------------------	-----------------	-------	----------	-------	----------	----------	-------

Origins Laboratory, Inc.
Y303267-03 (Soil)

GBTEX+TMBs by 8260D

Surrogate: 4-Bromofluorobenzene 96.8 % 70-130 B3C15 24 03/15/2023 03/18/2023

Metals by Saturated Paste by EPA 6010

Calcium	3.61	0.499	meq/L	10	[CALC]	03/15/2023	03/17/2023
Magnesium	1.42	0.823	"	"	"	"	"
Sodium	2.01	0.435	"	"	"	"	"

PAH by 8270D SIM

1-Methylnaphthalene	ND	0.00109	0.00201	mg/Kg	1	L670250	03/16/2023	03/17/2023
2-Methylnaphthalene	ND	0.00194	0.00201	"	"	"	"	"
Acenaphthene	0.00151	0.000304	0.00067	"	"	"	"	"
Anthracene	0.00192	0.000334	0.00067	"	"	"	"	"
Benzo(a)anthracene	0.0025	0.000493	0.00067	"	"	"	"	"
Benzo(a)pyrene	0.00279	0.000468	0.00067	"	"	"	"	"
Benzo(b)fluoranthene	0.0014	0.000585	0.00067	"	"	"	"	"
Benzo(k)fluoranthene	0.00123	0.000437	0.00067	"	"	"	"	"
Chrysene	0.0034	0.000624	0.00067	"	"	"	"	"
Dibenz(a,h)anthracene	ND	0.000614	0.00067	"	"	"	"	"
Fluoranthene	0.00873	0.000394	0.00067	"	"	"	"	"
Fluorene	0.00211	0.000286	0.00067	"	"	"	"	"
Indeno(1,2,3-cd)pyrene	0.00122	0.000627	0.00067	"	"	"	"	"

Origins Laboratory, Inc.



The results in this report apply to the samples analyzed in accordance with the chain of custody document. This analytical report must be reproduced in its entirety.

Eagle Environmental Consulting, LLC
8000 W 44th Ave
Wheat Ridge CO 80033

Martin C Eckert III
Project Number: [none]
Project: Noble - Front Range D #09-28

FL-SS-06@2'

3/10/2023 10:25:00AM

Analyte	Result	Min Detection Limit	Reporting Limit	Units	Dilution	Batch	Prepared	Analyzed	Notes
---------	--------	---------------------	-----------------	-------	----------	-------	----------	----------	-------

Waypoint Analytical, LLC.
Y303267-03 (Soil)

PAH by 8270D SIM

Naphthalene	ND	0.00145	0.00201	mg/Kg	1	L670250	03/16/2023	03/17/2023	
Pyrene	0.00655	0.000643	0.00067	"	"	"	"	"	

Surrogate: 2-Fluorobiphenyl	55.1 %		33-115			"	"	"	
Surrogate: 4-Terphenyl-d14	60.2 %		33-122			"	"	"	
Surrogate: Nitrobenzene-d5	52.1 %		29-110			"	"	"	

pH in Soil by 9045D

pH	8.03			pH Units	1	B3C1515	03/15/2023	03/16/2023	
----	------	--	--	----------	---	---------	------------	------------	--

SAR by 20B Saturated Paste

SAR	1.27			SAR	1	B3C1505	03/15/2023	03/17/2023	
-----	------	--	--	-----	---	---------	------------	------------	--

Specific Conductance Mod. 9050A

Specific Conductance (EC)	1.76		0.00500	mmhos/cm	1	B3C1515	03/15/2023	03/22/2023	
---------------------------	------	--	---------	----------	---	---------	------------	------------	--

Origins Laboratory, Inc.



The results in this report apply to the samples analyzed in accordance with the chain of custody document. This analytical report must be reproduced in its entirety.

Eagle Environmental Consulting, LLC
8000 W 44th Ave
Wheat Ridge CO 80033

Martin C Eckert III
Project Number: [none]
Project: Noble - Front Range D #09-28

FL-SS-07@1.5'
3/10/2023 11:35:00AM

Analyte	Result	Min Detection Limit	Reporting Limit	Units	Dilution	Batch	Prepared	Analyzed	Notes
---------	--------	---------------------	-----------------	-------	----------	-------	----------	----------	-------

Origins Laboratory, Inc.
Y303267-04 (Soil)

Boron (DTPA Sorbitol)

Boron	0.339	0.0992	mg/L	1	B3C1404	03/14/2023	03/15/2023	
-------	-------	--------	------	---	---------	------------	------------	--

DRO/ORO by EPA 8015D

Diesel (C10-C28)	ND	25.0	mg/kg	1	B3C1318	03/13/2023	03/16/2023	U
Residual Range Organics (C28-C40)	177	100	"	"	"	"	"	

Surrogate: o-Terphenyl	108 %	50-150			"	"	"	
------------------------	-------	--------	--	--	---	---	---	--

GBTEX+TMBs by 8260D

1,2,4-Trimethylbenzene	ND	0.00200	mg/kg	1	B3C1524	03/15/2023	03/18/2023	U
1,3,5-Trimethylbenzene	ND	0.00200	"	"	"	"	"	U
Benzene	ND	0.00200	"	"	"	"	"	U
Ethylbenzene	ND	0.00200	"	"	"	"	"	U
Toluene	ND	0.00200	"	"	"	"	"	U
Xylenes, total	ND	0.00200	"	"	"	"	"	U
Gasoline Range Hydrocarbons	ND	0.200	"	"	"	"	"	U

Surrogate: 1,2-Dichloroethane-d4	106 %	70-130			"	"	"	
Surrogate: Toluene-d8	98.3 %	70-130			"	"	"	

Origins Laboratory, Inc.



The results in this report apply to the samples analyzed in accordance with the chain of custody document. This analytical report must be reproduced in its entirety.

Eagle Environmental Consulting, LLC
8000 W 44th Ave
Wheat Ridge CO 80033

Martin C Eckert III
Project Number: [none]
Project: Noble - Front Range D #09-28

FL-SS-07@1.5'

3/10/2023 11:35:00AM

Analyte	Result	Min Detection Limit	Reporting Limit	Units	Dilution	Batch	Prepared	Analyzed	Notes
---------	--------	---------------------	-----------------	-------	----------	-------	----------	----------	-------

Origins Laboratory, Inc.
Y303267-04 (Soil)

GBTEX+TMBs by 8260D

Surrogate: 4-Bromofluorobenzene 94.0 % 70-130 B3C15 24 03/15/2023 03/18/2023

Metals by Saturated Paste by EPA 6010

Calcium	2.85	0.499	meq/L	10	[CALC]	03/15/2023	03/17/2023
Magnesium	1.25	0.823	"	"	"	"	"
Sodium	1.37	0.435	"	"	"	"	"

PAH by 8270D SIM

1-Methylnaphthalene	ND	0.00109	0.00201	mg/Kg	1	L670250	03/16/2023	03/17/2023
2-Methylnaphthalene	ND	0.00194	0.00201	"	"	"	"	"
Acenaphthene	0.00568	0.000304	0.00067	"	"	"	"	"
Anthracene	0.00937	0.000334	0.00067	"	"	"	"	"
Benzo(a)anthracene	0.00957	0.000493	0.00067	"	"	"	"	"
Benzo(a)pyrene	0.00614	0.000468	0.00067	"	"	"	"	"
Benzo(b)fluoranthene	0.00549	0.000585	0.00067	"	"	"	"	"
Benzo(k)fluoranthene	0.00365	0.000437	0.00067	"	"	"	"	"
Chrysene	0.0106	0.000624	0.00067	"	"	"	"	"
Dibenz(a,h)anthracene	0.000731	0.000614	0.00067	"	"	"	"	"
Fluoranthene	0.0315	0.000394	0.00067	"	"	"	"	"
Fluorene	0.00717	0.000286	0.00067	"	"	"	"	"
Indeno(1,2,3-cd)pyrene	0.00288	0.000627	0.00067	"	"	"	"	"

Origins Laboratory, Inc.



The results in this report apply to the samples analyzed in accordance with the chain of custody document. This analytical report must be reproduced in its entirety.

Eagle Environmental Consulting, LLC
8000 W 44th Ave
Wheat Ridge CO 80033

Martin C Eckert III
Project Number: [none]
Project: Noble - Front Range D #09-28

FL-SS-07@1.5'

3/10/2023 11:35:00AM

Analyte	Result	Min Detection Limit	Reporting Limit	Units	Dilution	Batch	Prepared	Analyzed	Notes
---------	--------	---------------------	-----------------	-------	----------	-------	----------	----------	-------

Waypoint Analytical, LLC.
Y303267-04 (Soil)

PAH by 8270D SIM

Naphthalene	0.00269	0.00145	0.00201	mg/Kg	1	L670250	03/16/2023	03/17/2023	
Pyrene	0.0238	0.000643	0.00067	"	"	"	"	"	

Surrogate: 2-Fluorobiphenyl	54.1 %		33-115			"	"	"	
Surrogate: 4-Terphenyl-d14	62 %		33-122			"	"	"	
Surrogate: Nitrobenzene-d5	53.8 %		29-110			"	"	"	

pH in Soil by 9045D

pH	8.00			pH Units	1	B3C1516	03/15/2023	03/16/2023	
----	------	--	--	----------	---	---------	------------	------------	--

SAR by 20B Saturated Paste

SAR	0.957			SAR	1	B3C1506	03/15/2023	03/17/2023	
-----	-------	--	--	-----	---	---------	------------	------------	--

Specific Conductance Mod. 9050A

Specific Conductance (EC)	0.717		0.00500	mmhos/cm	1	B3C1516	03/15/2023	03/16/2023	
---------------------------	-------	--	---------	----------	---	---------	------------	------------	--

Origins Laboratory, Inc.



The results in this report apply to the samples analyzed in accordance with the chain of custody document. This analytical report must be reproduced in its entirety.

Eagle Environmental Consulting, LLC
8000 W 44th Ave
Wheat Ridge CO 80033

Martin C Eckert III
Project Number: [none]
Project: Noble - Front Range D #09-28

Extractable Petroleum Hydrocarbons by 8015D - Quality Control Origins Laboratory, Inc.

Analyte	Result	Reporting Limit	Units	Spike Level	Source Result	%REC	%REC Limits	RPD	RPD Limit	Notes
Batch B3C1318 - EPA 3580										
Blank (B3C1318-BLK1)					Prepared: 03/13/2023 Analyzed: 03/15/2023					
Diesel (C10-C28)	ND	25.0	mg/kg							U
Residual Range Organics (C28-C40)	ND	100	"							U
Surrogate: o-Terphenyl	28		"	24.9		112	50-150			

Origins Laboratory, Inc.



The results in this report apply to the samples analyzed in accordance with the chain of custody document. This analytical report must be reproduced in its entirety.

Eagle Environmental Consulting, LLC
8000 W 44th Ave
Wheat Ridge CO 80033

Martin C Eckert III
Project Number: [none]
Project: Noble - Front Range D #09-28

Extractable Petroleum Hydrocarbons by 8015D - Quality Control
Origins Laboratory, Inc.

Analyte	Result	Reporting Limit	Units	Spike Level	Source Result	%REC	%REC Limits	RPD	RPD Limit	Notes
Batch B3C1318 - EPA 3580										
LCS (B3C1318-BS1)					Prepared: 03/13/2023 Analyzed: 03/15/2023					
Diesel (C10-C28)	954	50.0	mg/kg	1000		95.4	70-130			
Residual Range Organics (C28-C40)	1090	200	"	1000		109	70-130			
Surrogate: o-Terphenyl	52		"	49.8		105	50-150			

Origins Laboratory, Inc.



The results in this report apply to the samples analyzed in accordance with the chain of custody document. This analytical report must be reproduced in its entirety.

Eagle Environmental Consulting, LLC
8000 W 44th Ave
Wheat Ridge CO 80033

Martin C Eckert III
Project Number: [none]
Project: Noble - Front Range D #09-28

Extractable Petroleum Hydrocarbons by 8015D - Quality Control

Origins Laboratory, Inc.

Analyte	Result	Reporting Limit	Units	Spike Level	Source Result	%REC	%REC Limits	RPD	RPD Limit	Notes
---------	--------	-----------------	-------	-------------	---------------	------	-------------	-----	-----------	-------

Batch B3C1318 - EPA 3580

Matrix Spike (B3C1318-MS1)		Source: Y303267-01			Prepared: 03/13/2023 Analyzed: 03/15/2023					
Diesel (C10-C28)	1050	50.0	mg/kg	1000	159	89.0	70-130			
Residual Range Organics (C28-C40)	1170	200	"	1000	728	43.7	70-130			QM-07
Surrogate: o-Terphenyl	50		"	49.8		101	50-150			

Origins Laboratory, Inc.



The results in this report apply to the samples analyzed in accordance with the chain of custody document. This analytical report must be reproduced in its entirety.

Eagle Environmental Consulting, LLC
8000 W 44th Ave
Wheat Ridge CO 80033

Martin C Eckert III
Project Number: [none]
Project: Noble - Front Range D #09-28

Extractable Petroleum Hydrocarbons by 8015D - Quality Control Origins Laboratory, Inc.

Analyte	Result	Reporting Limit	Units	Spike Level	Source Result	%REC	%REC Limits	RPD	RPD Limit	Notes
Batch B3C1318 - EPA 3580										
Matrix Spike Dup (B3C1318-MSD1)			Source: Y303267-01			Prepared: 03/13/2023 Analyzed: 03/15/2023				
Diesel (C10-C28)	1790	50.0	mg/kg	1000	159	163	70-130	52.3	35	QM-07
Residual Range Organics (C28-C40)	2010	200	"	1000	728	128	70-130	53.1	35	QR-03
Surrogate: o-Terphenyl	47		"	49.8		93.7	50-150			

Origins Laboratory, Inc.



The results in this report apply to the samples analyzed in accordance with the chain of custody document. This analytical report must be reproduced in its entirety.

Eagle Environmental Consulting, LLC
8000 W 44th Ave
Wheat Ridge CO 80033

Martin C Eckert III
Project Number: [none]
Project: Noble - Front Range D #09-28

Extractable Petroleum Hydrocarbons by 8015D - Quality Control

Origins Laboratory, Inc.

Analyte	Result	Reporting Limit	Units	Spike Level	Source Result	%REC	%REC Limits	RPD	RPD Limit	Notes
Batch B3C1524 - EPA 5030 (soil)										
Blank (B3C1524-BLK1)					Prepared: 03/15/2023 Analyzed: 03/15/2023					
1,2,4-Trimethylbenzene	ND	0.00200	mg/kg							U
1,3,5-Trimethylbenzene	ND	0.00200	"							U
Benzene	ND	0.00200	"							U
Ethylbenzene	ND	0.00200	"							U
Naphthalene	ND	0.00380	"							U
Toluene	ND	0.00200	"							U
Xylenes, total	ND	0.00200	"							U
Gasoline Range Hydrocarbons	ND	0.200	"							U
Surrogate: 1,2-Dichloroethane-d4	0.12		"	0.125		96.7	70-130			
Surrogate: Toluene-d8	0.13		"	0.125		102	70-130			
Surrogate: 4-Bromofluorobenzene	0.12		"	0.125		99.6	70-130			

Origins Laboratory, Inc.



The results in this report apply to the samples analyzed in accordance with the chain of custody document. This analytical report must be reproduced in its entirety.

Eagle Environmental Consulting, LLC
8000 W 44th Ave
Wheat Ridge CO 80033

Martin C Eckert III
Project Number: [none]
Project: Noble - Front Range D #09-28

Volatile Organic Compounds by GC/MS SW846 8260D - Quality Control
Origins Laboratory, Inc.

Analyte	Result	Reporting Limit	Units	Spike Level	Source Result	%REC	%REC Limits	RPD	RPD Limit	Notes
Batch B3C1524 - EPA 5030 (soil)										
LCS (B3C1524-BS1)					Prepared: 03/15/2023 Analyzed: 03/15/2023					
1,2,4-Trimethylbenzene	0.101	0.00200	mg/kg	0.100		101	70-130			
1,3,5-Trimethylbenzene	0.104	0.00200	"	0.100		104	70-130			
Benzene	0.0845	0.00200	"	0.100		84.5	70-130			
Ethylbenzene	0.103	0.00200	"	0.100		103	70-130			
Naphthalene	0.0969	0.00380	"	0.100		96.9	70-130			
Toluene	0.0895	0.00200	"	0.100		89.5	70-130			
o-Xylene	0.105	0.00200	"	0.100		105	70-130			
m,p-Xylene	0.200	0.00400	"	0.200		100	70-130			
Surrogate: 1,2-Dichloroethane-d4	0.11		"	0.125		88.5	70-130			
Surrogate: Toluene-d8	0.13		"	0.125		105	70-130			
Surrogate: 4-Bromofluorobenzene	0.13		"	0.125		106	70-130			

Origins Laboratory, Inc.



The results in this report apply to the samples analyzed in accordance with the chain of custody document. This analytical report must be reproduced in its entirety.

Eagle Environmental Consulting, LLC
8000 W 44th Ave
Wheat Ridge CO 80033

Martin C Eckert III
Project Number: [none]
Project: Noble - Front Range D #09-28

Volatile Organic Compounds by GC/MS SW846 8260D - Quality Control
Origins Laboratory, Inc.

Analyte	Result	Reporting Limit	Units	Spike Level	Source Result	%REC	%REC Limits	RPD	RPD Limit	Notes
Batch B3C1524 - EPA 5030 (soil)										
LCS Dup (B3C1524-BSD1)					Prepared: 03/15/2023 Analyzed: 03/15/2023					
1,2,4-Trimethylbenzene	0.106	0.00200	mg/kg	0.100		106	70-130	4.65	20	
1,3,5-Trimethylbenzene	0.108	0.00200	"	0.100		108	70-130	3.53	20	
Benzene	0.0955	0.00200	"	0.100		95.5	70-130	12.2	20	
Ethylbenzene	0.105	0.00200	"	0.100		105	70-130	2.58	20	
Naphthalene	0.114	0.00380	"	0.100		114	70-130	16.0	20	
Toluene	0.0958	0.00200	"	0.100		95.8	70-130	6.80	20	
o-Xylene	0.107	0.00200	"	0.100		107	70-130	1.56	20	
m,p-Xylene	0.205	0.00400	"	0.200		103	70-130	2.59	20	
Surrogate: 1,2-Dichloroethane-d4	0.11		"	0.125		90.7	70-130			
Surrogate: Toluene-d8	0.13		"	0.125		101	70-130			
Surrogate: 4-Bromofluorobenzene	0.13		"	0.125		104	70-130			

Origins Laboratory, Inc.



The results in this report apply to the samples analyzed in accordance with the chain of custody document. This analytical report must be reproduced in its entirety.

Eagle Environmental Consulting, LLC
8000 W 44th Ave
Wheat Ridge CO 80033

Martin C Eckert III
Project Number: [none]
Project: Noble - Front Range D #09-28

Volatile Organic Compounds by GC/MS SW846 8260D - Quality Control

Origins Laboratory, Inc.

Analyte	Result	Reporting Limit	Units	Spike Level	Source Result	%REC	%REC Limits	RPD	RPD Limit	Notes
---------	--------	-----------------	-------	-------------	---------------	------	-------------	-----	-----------	-------

Classical Chemistry Parameters - Quality Control

Origins Laboratory, Inc.

Analyte	Result	Reporting Limit	Units	Spike Level	Source Result	%REC	%REC Limits	RPD	RPD Limit	Notes
---------	--------	-----------------	-------	-------------	---------------	------	-------------	-----	-----------	-------

Batch B3C1404 - DTPA Sorbitol Preparation

Blank (B3C1404-BLK1)

Prepared: 03/14/2023 Analyzed: 03/15/2023

Boron ND 0.100 mg/L

Duplicate (B3C1404-DUP1)

Source: Y303259-05

Prepared: 03/14/2023 Analyzed: 03/15/2023

Boron 5.84 0.0981 mg/L 7.07 19.1 50

Batch B3C1505 - Saturated Paste Metals

Blank (B3C1505-BLK1)

Prepared: 03/15/2023 Analyzed: 03/17/2023

Calcium PPM ND 10.0 mg/L

SAR 0.00 SAR

Magnesium PPM ND 10.0 mg/L

Sodium PPM ND 10.0 "

Duplicate (B3C1505-DUP1)

Source: Y303259-04

Prepared: 03/15/2023 Analyzed: 03/17/2023

Calcium PPM 370 10.0 mg/L 374 1.23 50

SAR 0.00 SAR 12.2 200 200

Magnesium PPM 21.2 10.0 mg/L 21.0 1.10 50

Sodium PPM 937 10.0 " 895 4.66 50

Batch B3C1506 - Saturated Paste Metals

Blank (B3C1506-BLK1)

Prepared: 03/15/2023 Analyzed: 03/17/2023

Calcium PPM ND 10.0 mg/L

Origins Laboratory, Inc.



The results in this report apply to the samples analyzed in accordance with the chain of custody document. This analytical report must be reproduced in its entirety.

Eagle Environmental Consulting, LLC
8000 W 44th Ave
Wheat Ridge CO 80033


Martin C Eckert III
Project Number: [none]
Project: Noble - Front Range D #09-28

Classical Chemistry Parameters - Quality Control

Origins Laboratory, Inc.

Analyte	Result	Reporting Limit	Units	Spike Level	Source Result	%REC	%REC Limits	RPD	RPD Limit	Notes
Batch B3C1506 - Saturated Paste Metals										
Blank (B3C1506-BLK1)					Prepared: 03/15/2023 Analyzed: 03/17/2023					
SAR	0.00		SAR							
Magnesium PPM	ND	10.0	mg/L							
Sodium PPM	ND	10.0	"							
Duplicate (B3C1506-DUP1)					Source: Y303267-04		Prepared: 03/15/2023 Analyzed: 03/17/2023			
SAR	0.00		SAR		0.957			200	200	
Calcium PPM	50.7	10.0	mg/L		57.0			11.8	50	
Magnesium PPM	13.8	10.0	"		15.2			9.62	50	
Sodium PPM	29.0	10.0	"		31.5			8.31	50	

Origins Laboratory, Inc.



The results in this report apply to the samples analyzed in accordance with the chain of custody document. This analytical report must be reproduced in its entirety.

Eagle Environmental Consulting, LLC
8000 W 44th Ave
Wheat Ridge CO 80033

Martin C Eckert III
Project Number: [none]
Project: Noble - Front Range D #09-28

Saturated Paste - Quality Control Origins Laboratory, Inc.

Analyte	Result	Reporting Limit	Units	Spike Level	Source Result	%REC	%REC Limits	RPD	RPD Limit	Notes
---------	--------	-----------------	-------	-------------	---------------	------	-------------	-----	-----------	-------

Batch B3C1515 - Saturated Paste pH/EC

Blank (B3C1515-BLK1)

Prepared: 03/15/2023 Analyzed: 03/16/2023

Specific Conductance (EC) ND 0.00500 mmhos/cm

Duplicate (B3C1515-DUP1)

Source: Y303259-04

Prepared: 03/15/2023 Analyzed: 03/16/2023

pH	7.70		pH Units	7.68		0.260	25
Specific Conductance (EC)	6.68	0.00500	mmhos/cm	6.56		1.81	25

Batch B3C1516 - Saturated Paste pH/EC

Blank (B3C1516-BLK1)

Prepared: 03/15/2023 Analyzed: 03/16/2023

Specific Conductance (EC) ND 0.00500 mmhos/cm

Duplicate (B3C1516-DUP1)

Source: Y303267-04

Prepared: 03/15/2023 Analyzed: 03/16/2023

pH	7.98		pH Units	8.00		0.250	25
Specific Conductance (EC)	0.708	0.00500	mmhos/cm	0.717		1.25	25

Origins Laboratory, Inc.



The results in this report apply to the samples analyzed in accordance with the chain of custody document. This analytical report must be reproduced in its entirety.

Eagle Environmental Consulting, LLC
8000 W 44th Ave
Wheat Ridge CO 80033

Martin C Eckert III
Project Number: [none]
Project: Noble - Front Range D #09-28

PAH by 8270D SIM - Quality Control
Waypoint Analytical, LLC.

Analyte	Result	Reporting Limit	Units	Spike Level	Source Result	%REC	%REC Limits	RPD	RPD Limit	Notes
---------	--------	-----------------	-------	-------------	---------------	------	-------------	-----	-----------	-------

Batch L670250 - 3550B

MSD (L 98530-MSD-L670250)		Source: 98530			Prepared: 03/16/2023 Analyzed: 03/17/2023					
Benzo(a)pyrene	0.123	0.00067	mg/Kg	0.165	<0.000468	74.5	30-130	2.4	30	
Naphthalene	0.097	0.00201	"	0.165	<0.00145	58.7	30-130	2.5	30	
Indeno(1,2,3-cd)pyrene	0.111	0.00067	"	0.165	<0.000627	67.2	30-130	5.5	30	
Fluorene	0.116	0.00067	"	0.165	<0.000286	70.3	30-130	0.8	30	
Fluoranthene	0.115	0.00067	"	0.165	<0.000394	69.6	30-130	2.6	30	
Dibenz(a,h)anthracene	0.153	0.00067	"	0.165	<0.000614	92.7	30-130	6.7	30	
Chrysene	0.119	0.00067	"	0.165	<0.000624	72.1	30-130	7.8	30	
Benzo(b)fluoranthene	0.0803	0.00067	"	0.165	<0.000585	48.6	30-130	11.1	30	
Pyrene	0.112	0.00067	"	0.165	<0.000643	67.8	30-130	2.7	30	
Benzo(a)anthracene	0.112	0.00067	"	0.165	<0.000493	67.8	30-130	3.5	30	
Anthracene	0.121	0.00067	"	0.165	<0.000334	73.3	30-130	2.5	30	
Acenaphthene	0.107	0.00067	"	0.165	<0.000304	64.8	30-130	0	30	
2-Methylnaphthalene	0.103	0.00201	"	0.165	<0.00194	62.4	30-130	1.9	30	
Benzo(k)fluoranthene	0.0985	0.00067	"	0.165	<0.000437	59.6	30-130	9.2	30	
1-Methylnaphthalene	0.103	0.00201	"	0.165	<0.00109	62.4	30-130	0.9	30	
Surrogate: Nitrobenzene-d5	51.8		"	0.33	172	51.8	29-110			
Surrogate: 4-Terphenyl-d14	60.9		"	0.33	204	60.9	33-122			
Surrogate: 2-Fluorobiphenyl	54.5		"	0.33	176	54.5	33-115			

MS (L 98530-MS-L670250)		Source: 98530			Prepared: 03/16/2023 Analyzed: 03/17/2023					
Indeno(1,2,3-cd)pyrene	0.105	0.00067	mg/Kg	0.166	<0.000627	63.2	30-130			
Pyrene	0.109	0.00067	"	0.166	<0.000643	65.6	30-130			
Naphthalene	0.0946	0.00201	"	0.166	<0.00145	56.9	30-130			
Fluorene	0.115	0.00067	"	0.166	<0.000286	69.2	30-130			
Fluoranthene	0.112	0.00067	"	0.166	<0.000394	67.4	30-130			
Dibenz(a,h)anthracene	0.143	0.00067	"	0.166	<0.000614	86.1	30-130			
Chrysene	0.11	0.00067	"	0.166	<0.000624	66.2	30-130			

Origins Laboratory, Inc.



The results in this report apply to the samples analyzed in accordance with the chain of custody document. This analytical report must be reproduced in its entirety.

Eagle Environmental Consulting, LLC
8000 W 44th Ave
Wheat Ridge CO 80033

Martin C Eckert III
Project Number: [none]
Project: Noble - Front Range D #09-28

PAH by 8270D SIM - Quality Control
Waypoint Analytical, LLC.

Analyte	Result	Reporting Limit	Units	Spike Level	Source Result	%REC	%REC Limits	RPD	RPD Limit	Notes
---------	--------	-----------------	-------	-------------	---------------	------	-------------	-----	-----------	-------

Batch L670250 - 3550B

MS (L 98530-MS-L670250)		Source: 98530			Prepared: 03/16/2023 Analyzed: 03/17/2023					
2-Methylnaphthalene	0.101	0.00201	mg/Kg	0.166	<0.00194	60.8	30-130			
Benzo(k)fluoranthene	0.108	0.00067	"	0.166	<0.000437	65	30-130			
1-Methylnaphthalene	0.102	0.00201	"	0.166	<0.00109	61.4	30-130			
Acenaphthene	0.107	0.00067	"	0.166	<0.000304	64.4	30-130			
Anthracene	0.118	0.00067	"	0.166	<0.000334	71	30-130			
Benzo(a)anthracene	0.116	0.00067	"	0.166	<0.000493	69.8	30-130			
Benzo(a)pyrene	0.12	0.00067	"	0.166	<0.000468	72.2	30-130			
Benzo(b)fluoranthene	0.0898	0.00067	"	0.166	<0.000585	54	30-130			
Surrogate: 4-Terphenyl-d14	57		"	0.331	204	57	33-122			
Surrogate: 2-Fluorobiphenyl	52.8		"	0.331	176	52.8	33-115			
Surrogate: Nitrobenzene-d5	51		"	0.331	172	51	29-110			

LCS (LCS-L670250)		Prepared: 03/16/2023 Analyzed: 03/17/2023								
Fluoranthene	0.135	0.00067	mg/Kg	0.167		80.8	30-130			
Benzo(k)fluoranthene	0.117	0.00067	"	0.167		70	30-130			
2-Methylnaphthalene	0.126	0.00201	"	0.167		75.4	30-130			
Acenaphthene	0.129	0.00067	"	0.167		77.2	30-130			
Anthracene	0.146	0.00067	"	0.167		87.4	30-130			
Benzo(a)anthracene	0.135	0.00067	"	0.167		80.8	30-130			
Benzo(a)pyrene	0.147	0.00067	"	0.167		88	30-130			
Benzo(b)fluoranthene	0.095	0.00067	"	0.167		56.8	30-130			
1-Methylnaphthalene	0.127	0.00201	"	0.167		76	30-130			
Pyrene	0.132	0.00067	"	0.167		79	30-130			
Dibenz(a,h)anthracene	0.166	0.00067	"	0.167		99.4	30-130			
Fluorene	0.14	0.00067	"	0.167		83.8	30-130			
Indeno(1,2,3-cd)pyrene	0.13	0.00067	"	0.167		77.8	30-130			
Naphthalene	0.122	0.00201	"	0.167		73	30-130			

Origins Laboratory, Inc.



The results in this report apply to the samples analyzed in accordance with the chain of custody document. This analytical report must be reproduced in its entirety.

Eagle Environmental Consulting, LLC
8000 W 44th Ave
Wheat Ridge CO 80033

Martin C Eckert III
Project Number: [none]
Project: Noble - Front Range D #09-28

PAH by 8270D SIM - Quality Control Waypoint Analytical, LLC.

Analyte	Result	Reporting Limit	Units	Spike Level	Source Result	%REC	%REC Limits	RPD	RPD Limit	Notes
Batch L670250 - 3550B										
LCS (LCS-L670250)					Prepared: 03/16/2023 Analyzed: 03/17/2023					
Chrysene	0.131	0.00067	mg/Kg	0.167		78.4	30-130			
Surrogate: 2-Fluorobiphenyl	66.3		"	0.333	66.3		33-115			
Surrogate: 4-Terphenyl-d14	71.1		"	0.333	71.1		33-122			
Surrogate: Nitrobenzene-d5	64.5		"	0.333	64.5		29-110			
LRB (LRB-L670250)					Prepared: 03/16/2023 Analyzed: 03/17/2023					
Benzo(b)fluoranthene	ND	0.00067	mg/Kg				-			
Pyrene	ND	0.00067	"				-			
Benzo(k)fluoranthene	ND	0.00067	"				-			
Chrysene	ND	0.00067	"				-			
1-Methylnaphthalene	ND	0.00201	"				-			
Fluoranthene	ND	0.00067	"				-			
Fluorene	ND	0.00067	"				-			
Dibenz(a,h)anthracene	ND	0.00067	"				-			
Benzo(a)pyrene	ND	0.00067	"				-			
Benzo(a)anthracene	ND	0.00067	"				-			
Acenaphthene	ND	0.00067	"				-			
2-Methylnaphthalene	ND	0.00201	"				-			
Naphthalene	ND	0.00201	"				-			
Indeno(1,2,3-cd)pyrene	ND	0.00067	"				-			
Anthracene	ND	0.00067	"				-			
Surrogate: Nitrobenzene-d5	57.6		"	0.333	57.6		29-110			
Surrogate: 4-Terphenyl-d14	73.2		"	0.333	73.2		33-122			
Surrogate: 2-Fluorobiphenyl	62.7		"	0.333	62.7		33-115			

Origins Laboratory, Inc.



The results in this report apply to the samples analyzed in accordance with the chain of custody document. This analytical report must be reproduced in its entirety.

Eagle Environmental Consulting, LLC
8000 W 44th Ave
Wheat Ridge CO 80033

Martin C Eckert III
Project Number: [none]
Project: Noble - Front Range D #09-28

PAH by 8270D SIM - Quality Control
Waypoint Analytical, LLC.

Analyte	Result	Reporting Limit	Units	Spike Level	Source Result	%REC	%REC Limits	RPD	RPD Limit	Notes
---------	--------	-----------------	-------	-------------	---------------	------	-------------	-----	-----------	-------

Batch L670104 - 3550B

MSD (L 98526-MSD-L670104)		Source: 98526			Prepared: 03/16/2023 Analyzed: 03/16/2023					
1-Methylnaphthalene	0.0955	0.00201	mg/Kg	0.166	<0.00109	57.5	30-130	1.3	30	
Fluoranthene	0.106	0.00067	"	0.166	0.00178	62.7	30-130	8.1	30	
Fluorene	0.111	0.00067	"	0.166	0.00514	63.7	30-130	1.8	30	
Chrysene	0.112	0.00067	"	0.166	0.00548	64.1	30-130	6.8	30	
Pyrene	0.109	0.00067	"	0.166	0.0037	63.4	30-130	7	30	
Indeno(1,2,3-cd)pyrene	0.109	0.00067	"	0.166	<0.000627	65.6	30-130	12.8	30	
Dibenz(a,h)anthracene	0.126	0.00067	"	0.166	<0.000614	75.9	30-130	15.3	30	
Benzo(k)fluoranthene	0.0886	0.00067	"	0.166	<0.000437	53.3	30-130	16.9	30	
Acenaphthene	0.101	0.00067	"	0.166	0.00106	60.2	30-130	1.9	30	
2-Methylnaphthalene	0.0897	0.00201	"	0.166	<0.00194	54	30-130	0.5	30	
Naphthalene	0.0921	0.00201	"	0.166	<0.00145	55.4	30-130	0.4	30	
Benzo(b)fluoranthene	0.0825	0.00067	"	0.166	0.000926	49.1	30-130	18.1	30	
Anthracene	0.104	0.00067	"	0.166	0.00091	62.1	30-130	4.6	30	
Benzo(a)anthracene	0.106	0.00067	"	0.166	0.00123	63.1	30-130	8.1	30	
Benzo(a)pyrene	0.104	0.00067	"	0.166	0.00127	61.8	30-130	4.6	30	
Surrogate: 2-Fluorobiphenyl	45.4		"	0.332	148	45.4	33-115			
Surrogate: Nitrobenzene-d5	46.3		"	0.332	151	46.3	29-110			
Surrogate: 4-Terphenyl-d14	50.9		"	0.332	180	50.9	33-122			

MS (L 98526-MS-L670104)		Source: 98526			Prepared: 03/16/2023 Analyzed: 03/16/2023					
Chrysene	0.12	0.00067	mg/Kg	0.164	0.00548	69.8	30-130			
1-Methylnaphthalene	0.0968	0.00201	"	0.164	<0.00109	59	30-130			
Pyrene	0.117	0.00067	"	0.164	0.0037	69	30-130			
Naphthalene	0.0925	0.00201	"	0.164	<0.00145	56.4	30-130			
Indeno(1,2,3-cd)pyrene	0.124	0.00067	"	0.164	<0.000627	75.6	30-130			
Fluorene	0.109	0.00067	"	0.164	0.00514	63.3	30-130			
Fluoranthene	0.115	0.00067	"	0.164	0.00178	69	30-130			

Origins Laboratory, Inc.



The results in this report apply to the samples analyzed in accordance with the chain of custody document. This analytical report must be reproduced in its entirety.

Eagle Environmental Consulting, LLC
8000 W 44th Ave
Wheat Ridge CO 80033

Martin C Eckert III
Project Number: [none]
Project: Noble - Front Range D #09-28

PAH by 8270D SIM - Quality Control
Waypoint Analytical, LLC.

Analyte	Result	Reporting Limit	Units	Spike Level	Source Result	%REC	%REC Limits	RPD	RPD Limit	Notes
---------	--------	-----------------	-------	-------------	---------------	------	-------------	-----	-----------	-------

Batch L670104 - 3550B

MS (L 98526-MS-L670104)		Source: 98526			Prepared: 03/16/2023 Analyzed: 03/16/2023					
Dibenz(a,h)anthracene	0.147	0.00067	mg/Kg	0.164	<0.000614	89.6	30-130			
Benzo(k)fluoranthene	0.105	0.00067	"	0.164	<0.000437	64	30-130			
Benzo(b)fluoranthene	0.099	0.00067	"	0.164	0.000926	59.8	30-130			
Benzo(a)pyrene	0.109	0.00067	"	0.164	0.00127	65.6	30-130			
Benzo(a)anthracene	0.115	0.00067	"	0.164	0.00123	69.3	30-130			
Anthracene	0.109	0.00067	"	0.164	0.00091	65.9	30-130			
Acenaphthene	0.103	0.00067	"	0.164	0.00106	62.1	30-130			
2-Methylnaphthalene	0.0902	0.00201	"	0.164	<0.00194	55	30-130			
Surrogate: Nitrobenzene-d5	50.1		"	0.329	151	50.1	29-110			
Surrogate: 4-Terphenyl-d14	56.2		"	0.329	180	56.2	33-122			
Surrogate: 2-Fluorobiphenyl	49.2		"	0.329	148	49.2	33-115			

LCS (LCS-L670104)		Prepared: 03/16/2023 Analyzed: 03/16/2023								
Benzo(a)pyrene	0.148	0.00067	mg/Kg	0.167		88.6	30-130			
Benzo(a)anthracene	0.133	0.00067	"	0.167		79.6	30-130			
Naphthalene	0.116	0.00201	"	0.167		69.4	30-130			
Indeno(1,2,3-cd)pyrene	0.0953	0.00067	"	0.167		57	30-130			
Fluorene	0.133	0.00067	"	0.167		79.6	30-130			
Fluoranthene	0.133	0.00067	"	0.167		79.6	30-130			
Dibenz(a,h)anthracene	0.119	0.00067	"	0.167		71.2	30-130			
Benzo(k)fluoranthene	0.111	0.00067	"	0.167		66.4	30-130			
Benzo(b)fluoranthene	0.109	0.00067	"	0.167		65.2	30-130			
Pyrene	0.147	0.00067	"	0.167		88	30-130			
Anthracene	0.137	0.00067	"	0.167		82	30-130			
Acenaphthene	0.124	0.00067	"	0.167		74.2	30-130			
2-Methylnaphthalene	0.113	0.00201	"	0.167		67.6	30-130			
1-Methylnaphthalene	0.118	0.00201	"	0.167		70.6	30-130			

Origins Laboratory, Inc.



The results in this report apply to the samples analyzed in accordance with the chain of custody document. This analytical report must be reproduced in its entirety.

Eagle Environmental Consulting, LLC
8000 W 44th Ave
Wheat Ridge CO 80033

Martin C Eckert III
Project Number: [none]
Project: Noble - Front Range D #09-28

PAH by 8270D SIM - Quality Control Waypoint Analytical, LLC.

Analyte	Result	Reporting Limit	Units	Spike Level	Source Result	%REC	%REC Limits	RPD	RPD Limit	Notes
---------	--------	-----------------	-------	-------------	---------------	------	-------------	-----	-----------	-------

Batch L670104 - 3550B

LCS (LCS-L670104)

Prepared: 03/16/2023 Analyzed: 03/16/2023

Chrysene	0.137	0.00067	mg/Kg	0.167		82	30-130			
Surrogate: Nitrobenzene-d5	57.9		"	0.333		57.9	29-110			
Surrogate: 4-Terphenyl-d14	84		"	0.333		84	33-122			
Surrogate: 2-Fluorobiphenyl	61.2		"	0.333		61.2	33-115			

LRB (LRB-L670104)

Prepared: 03/16/2023 Analyzed: 03/16/2023

Chrysene	ND	0.00067	mg/Kg				-			
2-Methylnaphthalene	ND	0.00201	"				-			
Acenaphthene	ND	0.00067	"				-			
Anthracene	ND	0.00067	"				-			
Benzo(a)anthracene	ND	0.00067	"				-			
Benzo(a)pyrene	ND	0.00067	"				-			
1-Methylnaphthalene	ND	0.00201	"				-			
Benzo(k)fluoranthene	ND	0.00067	"				-			
Pyrene	ND	0.00067	"				-			
Dibenz(a,h)anthracene	ND	0.00067	"				-			
Fluoranthene	ND	0.00067	"				-			
Fluorene	ND	0.00067	"				-			
Indeno(1,2,3-cd)pyrene	ND	0.00067	"				-			
Naphthalene	ND	0.00201	"				-			
Benzo(b)fluoranthene	ND	0.00067	"				-			
Surrogate: 4-Terphenyl-d14	72		"	0.333		72	33-122			
Surrogate: Nitrobenzene-d5	50.1		"	0.333		50.1	29-110			
Surrogate: 2-Fluorobiphenyl	54.9		"	0.333		54.9	33-115			

Origins Laboratory, Inc.



The results in this report apply to the samples analyzed in accordance with the chain of custody document. This analytical report must be reproduced in its entirety.

Eagle Environmental Consulting, LLC
8000 W 44th Ave
Wheat Ridge CO 80033

Martin C Eckert III
Project Number: [none]
Project: Noble - Front Range D #09-28

Notes and Definitions

U Sample is Non-Detect.

QR-03 The RPD value for the sample duplicate or MS/MSD was outside of QC acceptance limits due to matrix interference. QC batch accepted based on LCS and/or LCSD recovery and/or RPD values.

QM-07 The spike recovery was outside acceptance limits for the MS and/or MSD. The batch was accepted based on acceptable LCS recovery.

ND Analyte NOT DETECTED at or above the reporting limit

RPD Relative Percent Difference

All soil results are reported on a wet weight basis.

Calculated results may use J-flag data (instead of reported "ND") as part of calculation to provide a more accurate result.

Origins Laboratory, Inc.



The results in this report apply to the samples analyzed in accordance with the chain of custody document. This analytical report must be reproduced in its entirety.