

# Wellhead Closure Checklist

## COGCC Rule 911.a.(4) Environmental Site Closure Assessment Field Form

Additional attachments (optional):		Pit Closure --		Tank Battery Closure --		Flowline Closure 5-24-22		Partially Buried Vault Closure --
Site Name & COGCC Facility Number: Cody #D #3-7		Date: 4-15-22					Remediation Project #: 22154	
Associated Wells: 05-123-19037		Age of Site: years					Number of Photos Attached: 1	
Location: (GPS coordinates of wellhead or southeastern most wellhead for multiple)							40.255890 / -104.534770	
General Condition of Site: (General observations regarding housekeeping, corrosion, waste management, etc.)							Estimated Facility Size (acres):	
Good condition								
USCS Soil Type: SC					Estimated Depth to Groundwater: ~15-20'			
Hydrocarbon Impacted Soils / Spills: (Note estimated size and if impact appears to be surficial or extends to an unknown depth)								
None observed								
Salt Crusted Soils or Impacted Vegetation: (Note estimated size and if impact appears to be surficial or extends to an unknown depth)								
None observed								
Wellhead(s)								
Well API	05-123-19037							
Age	years							
Condition of surface around wellhead	Good - Per Crew							
PID Readings	N/A - Excavated upon arrival							
Condition of subsurface (staining present)	Good - No odor/no staining							
PID Readings	0.7	0.3	0.2	0.3	0.9			
Sample taken? Location/Sample ID#	WH-SS-01	WH-SS-02	WH-SS-03	WH-SS-04	WH-FS-01			
Photo Number(s)	See photo log							
Other observations regarding wellheads:								
Summary								
Was impacted soil identified?								
<input checked="" type="radio"/> No      Yes - less than 10 cubic yards      Yes - more than 10 cubic yards								
Total number of samples field screened: 5				Total number of samples collected: 5				
Highest PID Reading: 0.9				Total number of samples submitted to lab for analysis: 1				
If more than 10 cubic yards of impacted soil were observed:								
Vertical extent:				Estimated spill volume:				
Lateral extent:				Volume of soil removed:				
Is additional investigation required?								
Was groundwater encountered during the investigation?								
<input checked="" type="radio"/> No      Yes - not impacted or in contact with impacted soils      Yes - groundwater impacted and/or in contact with impacted soils								
Measured depth to groundwater:				Was remedial groundwater removal conducted?      Yes      No				
Date Groundwater was encountered:				Commencement date of removal:				
Sheen on groundwater?      Yes      No				Volume of groundwater removed prior to sampling:				
Free product observed?      Yes      No				Volume of groundwater removed post sampling:				
Total number of samples collected:				Total Volume of groundwater removed:				
Total number of samples submitted to lab for analysis:								

# Flowline Closure Checklist

## COGCC Rule 911.a.(4) Environmental Site Closure Assessment Field Form

Additional Attachments:		Tank Battery Closure	--	Wellhead Closure	4-15-22	Pit Closure	--	Partially Buried Vault Closure	--
Site Name & COGCC Facility Number: Cody #D #3-7		Date: 5-23-22 to 5-24-22						Remediation Project #: 22154	
Associated Wells: 05-123-19037		Age of Site: years						Number of Photos Attached: 12	
Starting point: (GPS coordinates and descriptions) At well: 40.255890 / -104.534770									
End point: (GPS coordinates and descriptions) At sep: 40.255841 / -104.530077									
USCS Soil Type: CL/SC					Estimated Depth to Groundwater: ~10-15'				
Hydrocarbon Impacted Soils / Spills: (Note estimated size and if impact appears to be surficial or extends to an unknown depth) Slight petroleum hydrocarbon staining and odor observed at flowline terminus/Pt. A at wellhead									
Salt Crusted Soils or Impacted Vegetation: (Note estimated size and if impact appears to be surficial or extends to an unknown depth) None observed									
Flowlines									
Flowline type	O, G, W								
Depth	years								
Age	~3'								
Length	~1310'								
Construction Material	Steel								
Were flowlines pulled?	Yes								
Visual Integrity of lines	Good								
Visual impacts if trenched	Slight petroleum hydrocarbon staining and odor observed at flowline terminus/Pt. A at wellhead								
PID Readings if trenched	1.4	413.0	0.3 to 1.6						
Sample taken? Location/Sample ID#	FL-SS-01	FL-SS-12	10 additional	bellholes/cut-points for removal field screened - see PID table					
Photo Number(s)	See photo log								
Other observations regarding on location flowlines: Flowline fully removed. Flowline terminus/Pt. B at separator and Pt. A at wellhead assessed + lab submitted. 10 additional bellholes/cut-points for removal field screened.									
Summary									
Was impacted soil identified? No <u>Yes - less than 10 cubic yards</u> Yes - more than 10 cubic yards									
Total number of samples field screened: 12					Total number of samples collected: 12				
Highest PID Reading: 413.0					Total number of samples submitted to lab for analysis: 2				
If more than 10 cubic yards of impacted soil were observed:									
Vertical extent:					Estimated spill volume:				
Lateral extent:					Volume of soil removed:				
Is additional investigation required?									
Was groundwater encountered during the investigation? <u>No</u> Yes - not impacted or in contact with impacted soils Yes - groundwater impacted and/or in contact with impacted soils									
Measured depth to groundwater:					Was remedial groundwater removal conducted? Yes No				
Date Groundwater was encountered:					Commencement date of removal:				
Sheen on groundwater? Yes No					Volume of groundwater removed prior to sampling:				
Free product observed? Yes No					Volume of groundwater removed post sampling:				
Total number of samples collected:					Total Volume of groundwater removed:				
Total number of samples submitted to lab for analysis:									



## **FIGURES**

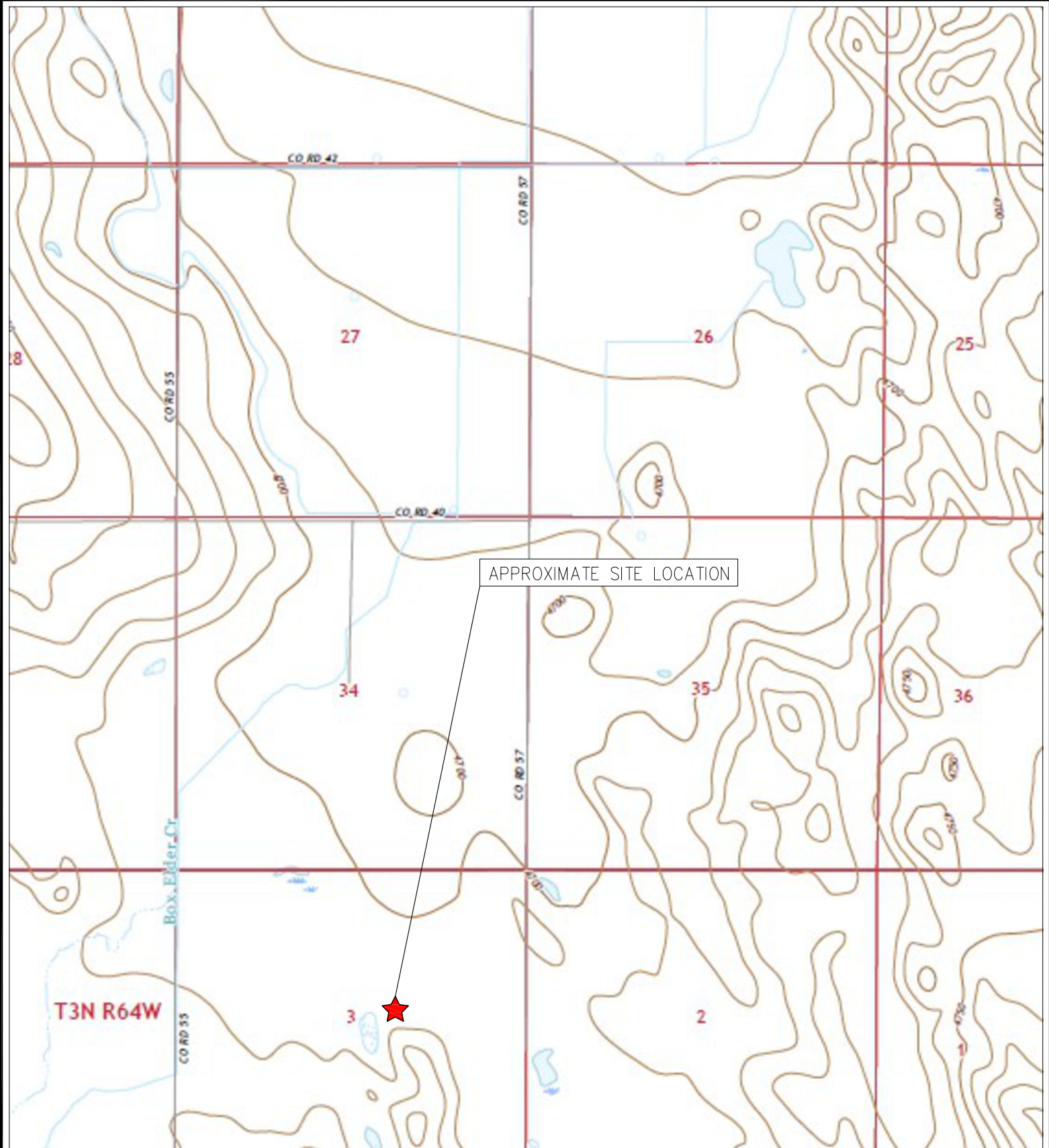
**Figure 1: Topographic Site Location Map**

**Figure 2: Aerial Site Location Map**

**Figure 3: Soil Analytical Map**

**Figure 4: Polycyclic Aromatic Hydrocarbons Map**

**Figure 5: Metals in Soil Map**



APPROXIMATE SITE LOCATION

T3N R64W



TOPOGRAPHIC SITE LOCATION MAP  
 CODY #D #3-7  
 CLOSURE ASSESSMENT  
 40.255890 / -104.534770  
 SW¼ NE¼ SEC.3 T3N R64W 6PM  
 WELD COUNTY, COLORADO  
 API # 05-123-19037  
 REMEDIATION # 22154



**EAGLE**  
 ENVIRONMENTAL  
 CONSULTING, LLC

8000 W 44th Ave, Wheat Ridge, CO 80033  
 Ph: 303-433-0479 • F: 303-325-5449

SOURCE: USGS 7.5 MINUTE TOPOGRAPHIC MAP  
 VALLEY VIEW SCHOOL, CO QUADRANGLE 2022

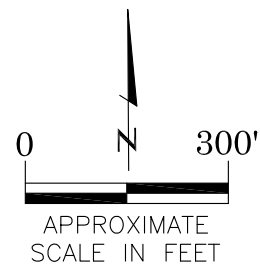
FIGURE NO. 1





# LEGEND

- FORMER CODY #D #3-7 WELLHEAD (PLUGGED AND ABANDONED)
- ASSOCIATED SEPARATOR
- APPROXIMATE FLOWLINE LOCATION (REMOVED)



## AERIAL SITE LOCATION MAP

CODY #D #3-7  
CLOSURE ASSESSMENT  
40.255890 / -104.534770  
SW¼ NE¼ SEC.3 T3N R64W 6PM  
WELD COUNTY, COLORADO  
API # 05-123-19037  
REMEDATION # 22154

FIGURE NO.

2

DRAWN BY:

GEC



**EAGLE**  
ENVIRONMENTAL  
CONSULTING, LLC  
8000 W 44th Ave. Wheat Ridge, CO 80033  
Ph: 303-433-0479 • F: 303-325-5449



# LEGEND

- FORMER WELLHEAD LOCATION
- APPROXIMATE FLOWLINE LOCATION (REMOVED)
- SS-02 APPROXIMATE LOCATION OF SOIL SAMPLES FIELD SCREENED, ONLY, WITH PHOTOIONIZATION DETECTOR
- SS-02 APPROXIMATE LOCATION OF SOIL SAMPLES SUBMITTED FOR LABORATORY ANALYSIS

## PARAMETERS

**SAMPLE LOCATION**  
**DATE**  
**DEPTH (FEET)**  
 B = BENZENE (mg/kg)  
 T = TOLUENE (mg/kg)  
 E = ETHYLBENZENE (mg/kg)  
 X = TOTAL XYLENES (mg/kg)  
 G = TPH-GRO (mg/kg)  
 D = TPH-DRO (mg/kg)  
 R = TPH-RRO (mg/kg)  
 1,2,4-TMB = 1,2,4 TRIMETHYLBENZENE (mg/kg)  
 1,3,5-TMB = 1,3,5 TRIMETHYLBENZENE (mg/kg)  
 Brn= BORON (mg/L)  
 EC = SPECIFIC CONDUCTANCE (mmhos/cm)  
 SAR= SODIUM ADSORPTION RATIO  
 pH = pH (PH UNITS)

mg/kg = MILLIGRAMS PER KILOGRAM  
 mg/L = MILLIGRAMS PER LITER  
 mmhos/cm = MILLIMHOS PER CENTIMETER

TPH-GRO = TOTAL PETROLEUM HYDROCARBONS - GASOLINE RANGE ORGANICS  
 TPH-DRO = TOTAL PETROLEUM HYDROCARBONS - DIESEL RANGE ORGANICS  
 TPH-RRO = TOTAL PETROLEUM HYDROCARBONS - RESIDUAL RANGE ORGANICS

**NOTES:**  
 VALUES PRESENTED WITH A LESS THAN SYMBOL (<) DID NOT CONTAIN CONCENTRATIONS AT OR ABOVE LABORATORY DETECTION LIMITS

VALUES PRESENTED IN **BOLD** EXCEED COGCC TABLE 915-1 REGULATORY LIMITS.

VALUES PRESENTED WITH ASTERISK (\*) EXCEED COGCC TABLE 915-1 PROTECTION OF GROUNDWATER SOIL SCREENING LEVELS, ONLY.

COGCC = COLORADO OIL AND GAS CONSERVATION COMMISSION

## SOIL ANALYTICAL MAP

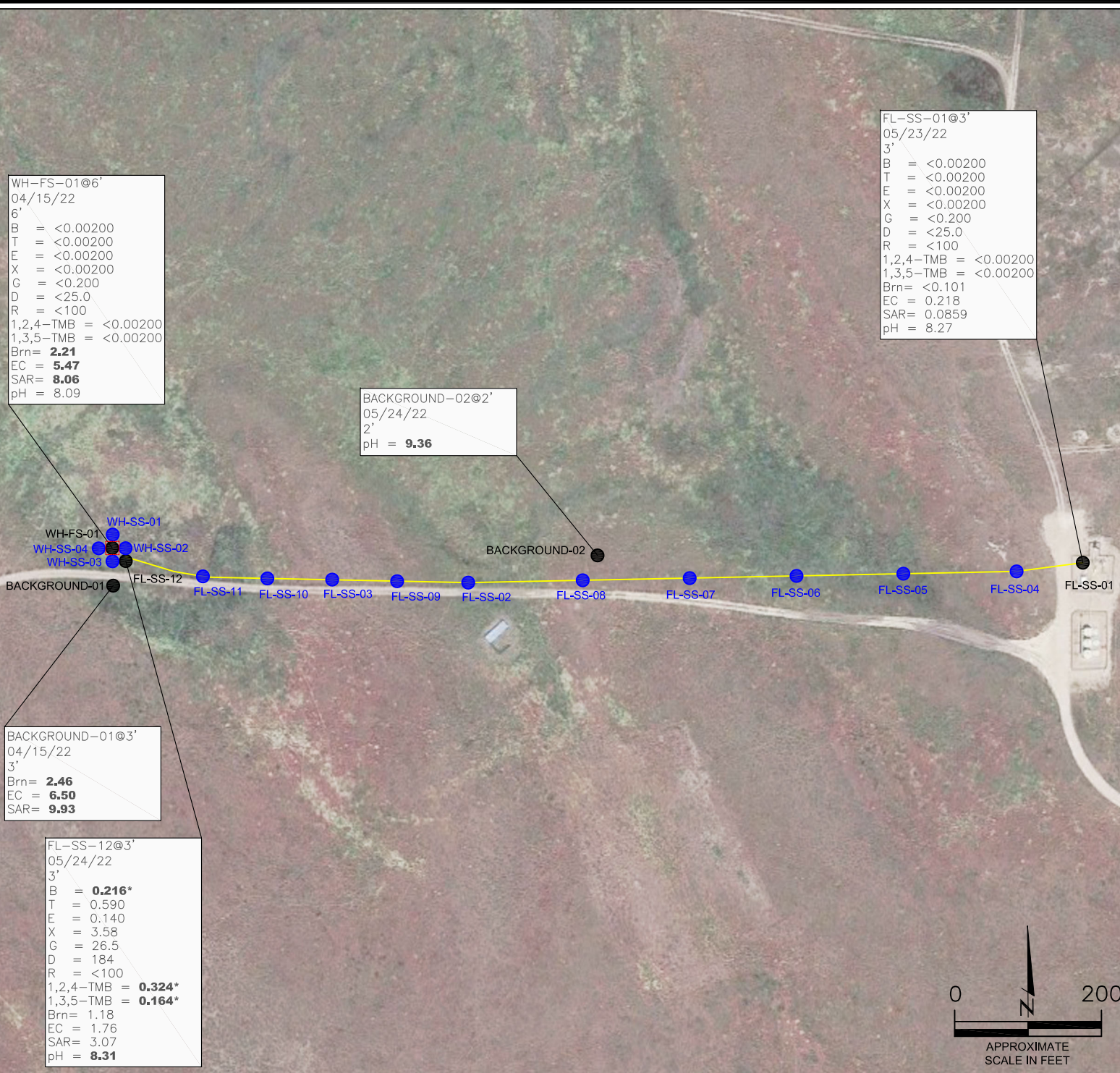
CODY #D #3-7  
 CLOSURE ASSESSMENT  
 40.255890 / -104.534770  
 SW¼ NE¼ SEC.3 T3N R64W 6PM  
 WELD COUNTY, COLORADO  
 API # 05-123-19037  
 REMEDIATION # 22154

FIGURE NO.  
3

DRAWN BY:  
GEC



**EAGLE**  
 ENVIRONMENTAL  
 CONSULTING, LLC  
 8000 W 44th Ave, Wheat Ridge, CO 80033  
 Ph: 303-433-0479 • F: 303-325-5449





WH-FS-01@6'  
04/15/22  
6'  
ND = <0.00067  
1-Methylnaphthalene = ND  
2-Methylnaphthalene = ND  
Acenaphthene = ND  
Anthracene = ND  
Benzo(a)anthracene = ND  
Benzo(a)pyrene = ND  
Benzo(b)fluoranthene = ND  
Benzo(k)fluoranthene = ND  
Chrysene = ND  
Dibenzo(a,h)anthracene = ND  
Fluoranthene = ND  
Fluorene = ND  
Indeno(1,2,3-CD)pyrene = ND  
Naphthalene = ND  
Pyrene = ND

FL-SS-01@3'  
05/23/22  
3'  
ND = <0.00335  
1-Methylnaphthalene = ND  
2-Methylnaphthalene = ND  
Acenaphthene = ND  
Anthracene = ND  
Benzo(a)anthracene = ND  
Benzo(a)pyrene = ND  
Benzo(b)fluoranthene = ND  
Benzo(k)fluoranthene = ND  
Chrysene = ND  
Dibenzo(a,h)anthracene = ND  
Fluoranthene = ND  
Fluorene = ND  
Indeno(1,2,3-CD)pyrene = ND  
Naphthalene = ND  
Pyrene = ND

FL-SS-12@3'  
05/24/22  
3'  
ND = <0.0067  
1-Methylnaphthalene = **0.693\***  
2-Methylnaphthalene = **1.47\***  
Acenaphthene = 0.0783  
Anthracene = 0.00152  
Benzo(a)anthracene = **0.0146\***  
Benzo(a)pyrene = ND  
Benzo(b)fluoranthene = ND  
Benzo(k)fluoranthene = 0.000712  
Chrysene = 0.0151  
Dibenzo(a,h)anthracene = ND  
Fluoranthene = 0.000863  
Fluorene = 0.111  
Indeno(1,2,3-CD)pyrene = ND  
Naphthalene = **0.309\***  
Pyrene = 0.0106

#### LEGEND

- FORMER WELLHEAD LOCATION
- APPROXIMATE FLOWLINE LOCATION (REMOVED)
- APPROXIMATE LOCATION OF SOIL SAMPLES FIELD SCREENED, ONLY, WITH PHOTOIONIZATION DETECTOR
- APPROXIMATE LOCATION OF SOIL SAMPLES SUBMITTED FOR LABORATORY ANALYSIS

#### PARAMETERS

SAMPLE LOCATION  
DATE SAMPLE COLLECTED  
APPROXIMATE DEPTH

POLYCYCLIC AROMATIC HYDROCARBONS (PAHs)

NOTE:  
CONCENTRATIONS PRESENTED IN mg/kg

mg/kg = MILLIGRAMS PER KILOGRAM

ND = NON-DETECT

NOTE:  
VALUES PRESENTED WITH A LESS THAN SYMBOL (<) DID NOT CONTAIN CONCENTRATIONS AT OR ABOVE LABORATORY DETECTION LIMITS

VALUES PRESENTED IN **BOLD** EXCEED COGCC TABLE 915-1 REGULATORY LIMITS.

VALUES PRESENTED WITH ASTERISK (\*) EXCEED COGCC TABLE 915-1 PROTECTION OF GROUNDWATER SOIL SCREENING LEVELS, ONLY.

COGCC = COLORADO OIL AND GAS CONSERVATION COMMISSION

#### POLYCYCLIC AROMATIC HYDROCARBONS MAP

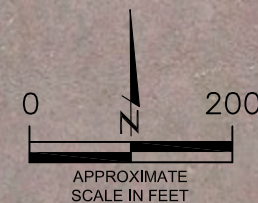
CODY #D #3-7  
CLOSURE ASSESSMENT  
40.255890 / -104.534770  
SW¼ NE¼ SEC.3 T3N R64W 6PM  
WELD COUNTY, COLORADO  
API # 05-123-19037  
REMEDIATION # 22154

FIGURE NO.  
4

DRAWN BY:  
GEC



**EAGLE**  
ENVIRONMENTAL  
CONSULTING, LLC  
8000 W 44th Ave, Wheat Ridge, CO 80033  
Ph: 303-433-0479 • F: 303-325-5449





# LEGEND

- FORMER WELLHEAD LOCATION
- APPROXIMATE FLOWLINE LOCATION (REMOVED)
- SS-02 APPROXIMATE LOCATION OF SOIL SAMPLES FIELD SCREENED, ONLY, WITH PHOTOIONIZATION DETECTOR
- SS-02 APPROXIMATE LOCATION OF SOIL SAMPLES SUBMITTED FOR LABORATORY ANALYSIS

## PARAMETERS

SAMPLE LOCATION  
DATE SAMPLE COLLECTED  
APPROXIMATE DEPTH  
Arsenic = (mg/kg)  
Barium = (mg/kg)  
Cadmium = (mg/kg)  
Chromium (VI) = (mg/kg)  
Copper = (mg/kg)  
Lead = (mg/kg)  
Nickel = (mg/kg)  
Selenium = (mg/kg)  
Silver = (mg/kg)  
Zinc = (mg/kg)

mg/kg = MILLIGRAMS PER KILOGRAM

(NS) – NOT SAMPLED

NOTE:  
VALUES PRESENTED WITH A LESS THAN SYMBOL (<) DID NOT CONTAIN CONCENTRATIONS AT/OR ABOVE LABORATORY REPORTING LIMITS AND/OR MINIMUM DETECTION LIMITS.

VALUES PRESENTED IN **BOLD** EXCEED COGCC TABLE 915–1 VALUES

\*VAUES EXCEED COGCC TABLE 915–1 PROTECTION OF GROUNDWATER SOIL SCREENING LEVELS, ONLY.

\*\*ACHIEVABLE PRACTICAL QUANTITATIVE LIMITS FOR HEXAVALENT CHROMIUM (Cr VI) IN SOILS IS IN THE RANGE OF 0.1 TO 1 mg/kg.

\*\*\*ARSENIC IS NATURALLY OCCURRING IN COLORADO. LOCAL CLEAN-UP LEVEL (2.13 mg/kg) is 1.25\*BACKGROUND (1.70 mg/kg).

COGCC = COLORADO OIL AND GAS CONSERVATION COMMISSION

## METALS IN SOIL MAP

CODY #D #3–7  
CLOSURE ASSESSMENT  
40.255890 / -104.534770  
SW¼ NE¼ SEC.3 T3N R64W 6PM  
WELD COUNTY, COLORADO  
API # 05–123–19037  
REMEDIAL # 22154

FIGURE NO.

5

DRAWN BY:

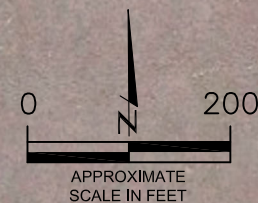
GEC



**EAGLE**  
ENVIRONMENTAL  
CONSULTING, LLC  
8000 W 44th Ave, Wheat Ridge, CO 80033  
Ph: 303-433-0479 • F: 303-325-5449

BACKGROUND–02@2'  
05/24/22  
2'  
Arsenic = 1.70\*\*\*  
Barium = 46.5  
Cadmium = <0.100  
Chromium (VI) = <0.245\*\*  
Copper = <10.0  
Lead = 4.53  
Nickel = 3.92  
Selenium = 0.127  
Silver = <0.100  
Zinc = 15.6

FL–SS–12@3'  
05/24/22  
3'  
Arsenic = 2.01\*\*\*  
Barium = **123\***  
Cadmium = 0.222  
Chromium (VI) = <0.244\*\*  
Copper = 14.2  
Lead = **15.7\***  
Nickel = 10.9  
Selenium = **0.304\***  
Silver = 0.0442  
Zinc = 57.4



APPROXIMATE  
SCALE IN FEET



## **TABLES**

**Table 1: Photoionization Detector Reading Summary**

**Table 2: Soil Analytical Results Summary**

**TABLE 1**  
**PHOTOIONIZATION DETECTOR READING SUMMARY**  
**CODY #D #3-7**  
**CLOSURE ASSESSMENT**  
**40.255890 / -104.534770**  
**SW¼ NE¼ SEC.3 T3N R64W 6PM**  
**WELD COUNTY, COLORADO**  
**API # 05-123-19037**  
**REMEDATION # 22154**

Sample Location (Latitude/Longitude)	Date	Approximate Depth (feet)	PID Reading (ppm-v)	Lab Submission (Y/N)
WH-SS-01 @ 5' (40.255902 / -104.534795)	04/15/22	5	0.7	N
WH-SS-02 @ 5' (40.255886 / -104.534768)	04/15/22	5	0.3	N
WH-SS-03 @ 5' (40.255870 / -104.534790)	04/15/22	5	0.2	N
WH-SS-04 @ 5' (40.255889 / -104.534812)	04/15/22	5	0.3	N
WH-FS-01 @ 6' (40.255889 / -104.534790)	04/15/22	6	0.9	Y
Background-01 @ 3' (40.255778 / -104.534808)	04/15/22	3	0.1	Y
FL-SS-01 @ 3' (40.255840 / -104.530069)	05/23/22	3	1.4	Y
FL-SS-02 @ 3' (40.255783 / -104.533045)	05/23/22	3	1.0	N
FL-SS-03 @ 3' (40.255782 / -104.533741)	05/23/22	3	0.4	N
FL-SS-04 @ 3' (40.255805 / -104.530395)	05/23/22	3	0.3	N
Background-02 @ 2' (40.255891 / -104.530185)	05/23/22	2	1.1	Y
FL-SS-05 @ 3' (40.255809 / -104.530961)	05/24/22	3	0.3	N
FL-SS-06 @ 3' (40.255799 / -104.531500)	05/24/22	3	0.3	N
FL-SS-07 @ 3' (40.255787 / -104.531969)	05/24/22	3	1.6	N
FL-SS-08 @ 3' (40.255777 / -104.532489)	05/24/22	3	1.5	N
FL-SS-09 @ 3' (40.255778 / -104.533425)	05/24/22	3	1.2	N
FL-SS-10 @ 3' (40.255784 / -104.534015)	05/24/22	3	1.4	N
FL-SS-11 @ 3' (40.255801 / -104.534353)	05/24/22	3	1.6	N
FL-SS-12 @ 3' (40.255868 / -104.534757)	05/24/22	3	413.0	Y
(Y/N) = Yes or No ppm-v = parts per million by volume PID = Photoionization Detector				



TABLE 2  
SOIL ANALYTICAL RESULTS SUMMARY  
CODY #D #3-7  
CLOSURE ASSESSMENT  
40.255890 / -104.534770  
SW¼ NE¼ SEC.3 T3N R64W 6PM  
WELD COUNTY, COLORADO  
API # 05-123-19037  
REMEDATION # 22154

Sample Location (Latitude / Longitude)					WH-FS-01 @ 6'	Background-01 @ 3'	FL-SS-01 @ 3'	FL-SS-12 @ 3'	Background-02 @ 2'
Sample Date					4/15/2022	4/15/2022	5/23/2022	5/24/2022	5/23/2022
Sample Depth					6'	3'	3'	3'	2'
PID Reading (ppm-v)					0.9	0.1	1.4	413.0	1.1
Regulatory Limits									
Chemical of Concern	Units	COGCC Table 915-1 RSSLs	COGCC Table 915-1 GSSLs	Local Clean-Up Level					
<b>VOCs</b>									
Benzene	mg/kg	1.2	0.0026	--	<0.00200	NA	<0.00200	<b>0.216*</b>	NA
Toluene	mg/kg	490	0.69	--	<0.00200	NA	<0.00200	0.590	NA
Ethylbenzene	mg/kg	5.8	0.78	--	<0.00200	NA	<0.00200	0.140	NA
Total Xylenes	mg/kg	58	9.9	--	<0.00200	NA	<0.00200	3.58	NA
1,2,4-Trimethylbenzene	mg/kg	30	0.0081	--	<0.00200	NA	<0.00200	<b>0.324*</b>	NA
1,3,5-Trimethylbenzene	mg/kg	27	0.0087	--	<0.00200	NA	<0.00200	<b>0.164*</b>	NA
<b>Total Petroleum Hydrocarbons</b>									
TPH-GRO	mg/kg	500	--	--	<0.200	NA	<0.200	26.5	NA
TPH-DRO	mg/kg	500	--	--	<25.0	NA	<25.0	184	NA
TPH-RRO	mg/kg	500	--	--	<100	NA	<100	<100	NA
<b>Polycyclic Aromatics Hydrocarbons</b>									
1-Methyl-naphthalene	mg/kg	18	0.006	--	<0.00067	NA	<0.00335	<b>0.693*</b>	NA
2-Methyl-naphthalene	mg/kg	24	0.019	--	<0.00067	NA	<0.00335	<b>1.47*</b>	NA
Acenaphthene	mg/kg	360	0.55	--	<0.00067	NA	<0.00335	0.0783	NA
Anthracene	mg/kg	1800	5.8	--	<0.00067	NA	<0.00335	0.00152	NA
Benzo(a)-anthracene	mg/kg	1.1	0.011	--	<0.00067	NA	<0.00335	<b>0.0146*</b>	NA
Benzo(a)-pyrene	mg/kg	0.11	0.24	--	<0.00067	NA	<0.00335	<0.00067	NA
Benzo(b)-fluoranthene	mg/kg	1.1	0.3	--	<0.00067	NA	<0.00335	<0.00067	NA
Benzo(k)-fluoranthene	mg/kg	11	2.9	--	<0.00067	NA	<0.00335	0.000712	NA
Chrysene	mg/kg	110	9	--	<0.00067	NA	<0.00335	0.0151	NA
Dibenzo(a,h)-anthracene	mg/kg	0.11	0.096	--	<0.00067	NA	<0.00335	<0.00067	NA
Fluoranthene	mg/kg	240	8.9	--	<0.00067	NA	<0.00335	0.000863	NA
Fluorene	mg/kg	240	0.54	--	<0.00067	NA	<0.00335	0.111	NA
Indeno(1,2,3-cd)-pyrene	mg/kg	1.1	0.98	--	<0.00067	NA	<0.00335	<0.00067	NA
Naphthalene	mg/kg	2	0.0038	--	<0.00067	NA	<0.00335	<b>0.309*</b>	NA
Pyrene	mg/kg	180	1.3	--	<0.00067	NA	<0.00335	0.0106	NA
<b>Soil Suitability (Inorganics)</b>									
Boron	mg/L	2	--	--	<b>2.21</b>	<b>2.46</b>	<0.101	1.18	NA
pH	standard unit	6-8.3	--	--	8.09	NA	8.27	<b>8.31</b>	<b>9.36</b>
Sodium Adsorption Ratio (SAR)	--	<6	--	--	<b>8.06</b>	<b>9.93</b>	0.0859	3.07	NA
Specific Conductance (EC)	mmhos/cm	<4	--	--	<b>5.47</b>	<b>6.50</b>	0.218	1.76	NA
<b>Metals</b>									
Arsenic	mg/kg	0.68***	0.29***	2.13***	NA	NA	NA	2.01***	1.70***
Barium	mg/kg	15000	82	--	NA	NA	NA	<b>123*</b>	46.5
Cadmium	mg/kg	71	0.38	--	NA	NA	NA	0.222	<0.100
Copper	mg/kg	3100	46	--	NA	NA	NA	14.2	<10.0
Lead	mg/kg	400	14	--	NA	NA	NA	<b>15.7*</b>	4.53
Nickel	mg/kg	1500	26	--	NA	NA	NA	10.9	3.92
Selenium	mg/kg	390	0.26	--	NA	NA	NA	<b>0.304*</b>	0.127
Silver	mg/kg	390	0.8	--	NA	NA	NA	0.0442	<0.100
Zinc	mg/kg	23000	370	--	NA	NA	NA	57.4	15.6
Hexavalent Chromium	mg/kg	0.3**	0.00067**	0.1 to 1.0**	NA	NA	NA	<0.244**	<0.245**
COGCC = Colorado Oil and Gas Conservation Commission mg/kg = milligrams per kilogram mmhos/cm = millimhos per centimeter PID = Photoionization Detector ppm-v = parts per million by volume mg/L = milligrams per liter SAR = Sodium Adsorption Ratio Notes: Values presented in <b>BOLD</b> exceed COGCC Table 915-1 Regulatory Limits. Values presented with asterisk (*) exceed COGCC Table 915-1 GSSLs **Achievable practical quantitative limits for Hexavalent Chromium in soils is in the range of 0.1 to 1 mg/kg. ***Arsenic is naturally occurring in Colorado. The Local Clean-up Level (2.13 mg/kg) is 1.25*Background (1.70 mg/kg).									



## **ATTACHMENT A**

### **Photo Log**

Cody #D #3-7  
API # 05-123-19037  
Remediation # 22154

Closure Assessment

April - May 2022





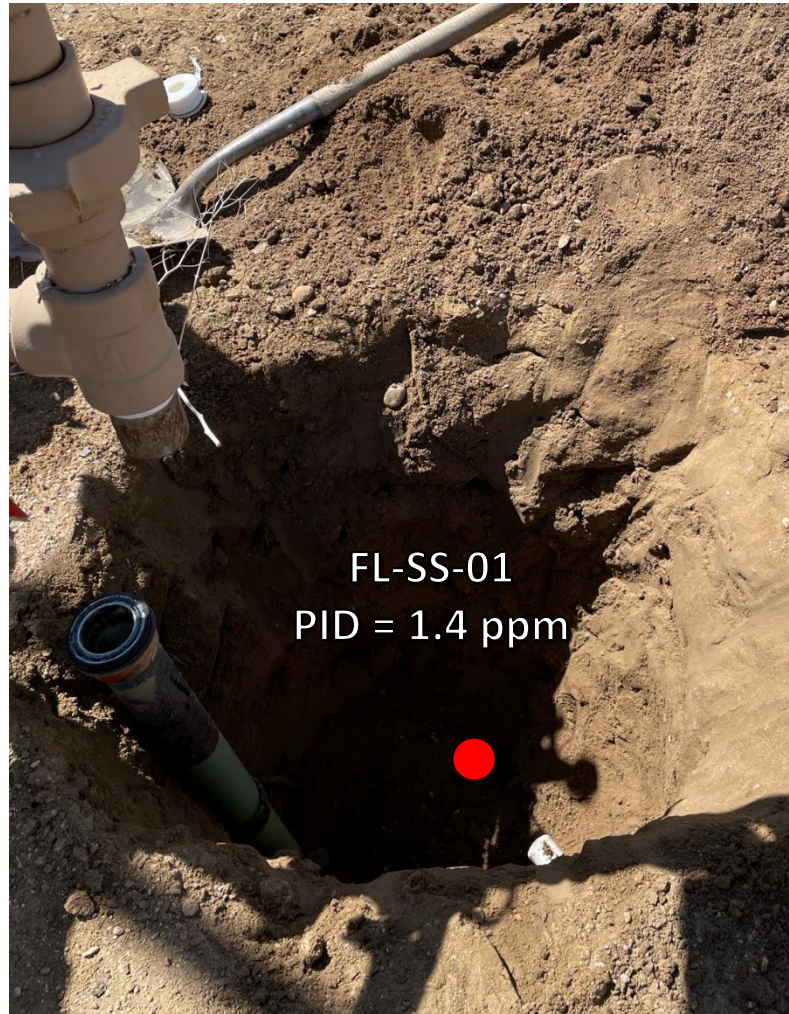
# Wellhead Excavation – 04/15/22



Looking east  
No petroleum hydrocarbon staining or odor observed



# Flowline Removal – 05/23/22



Flowline terminus / Pt B (at separator)

No petroleum hydrocarbon staining or odor observed



Looking southwest at flowline cut point

No petroleum hydrocarbon staining or odor observed



# Flowline Removal – 05/23/22



Looking southwest at flowline cut point

No petroleum hydrocarbon staining or odor observed



Looking west at flowline cut point

No petroleum hydrocarbon staining or odor observed



# Flowline Removal – 05/24/22



Looking east at flowline cut point

No petroleum hydrocarbon staining or odor observed



Looking east at flowline cut point

No petroleum hydrocarbon staining or odor observed



# Flowline Removal – 05/24/22



Looking west at flowline cut point

No petroleum hydrocarbon staining or odor observed



Looking east at flowline cut point

No petroleum hydrocarbon staining or odor observed



# Flowline Removal – 05/24/22



Looking east at flowline cut point

No petroleum hydrocarbon staining or odor observed



Looking east at flowline cut point

No petroleum hydrocarbon staining or odor observed



# Flowline Removal – 05/24/22



Looking west at flowline cut point

No petroleum hydrocarbon staining or odor observed



Looking east at Pt A (at wellhead)

Slight petroleum hydrocarbon staining and odor observed



## **ATTACHMENT B**

### **Laboratory Analytical Reports**





April 26, 2022

Eagle Environmental Consulting, Inc.

Martin C Eckert III

8000 W 44th Ave

Wheat Ridge CO 80033

Project Name - Noble - Cody #D #3-7

Project Number - [none]

Attached are your analytical results for Noble - Cody #D #3-7 received by Origins Laboratory, Inc. April 15, 2022. This project is associated with Origins project number Y204339-01.

The analytical results in the following report were analyzed under the guidelines of EPA Methods. These methods are identified as follows; "SW" are defined in SW-846, "EPA" are defined in 40CFR part 136 and "SM" are defined in the most current revision of Standard Methods For the Examination of Water and Wastewater.

The analytical results apply specifically to the samples and analyses specified per the attached Chain of Custody. As such, this report shall not be reproduced except in full, without the written approval of Origin's laboratory.

Unless otherwise noted, the analytical results for all soil samples are reported on a wet weight basis. All analytical analyses were performed under NELAP guidelines unless noted by a data qualifier.

Any holding time exceedances, deviations from the method specifications or deviations from Origins Laboratory's Standard Operating Procedures are outlined in the case narrative.

Thank you for selecting Origins for your analytical needs. Please contact us with any questions concerning this report, or if we can help with anything at all.

Origins Laboratory, Inc.  
303.433.1322  
o-squad@oelabinc.com



1725 Elk Place, Denver, CO 80211 | Phone: 303.433.1322 | Fax: 303.265.9645



Eagle Environmental Consulting, Inc.

8000 W 44th Ave

Wheat Ridge CO 80033

Martin C Eckert III

Project Number: [none]

Project: Noble - Cody #D #3-7

### CROSS REFERENCE REPORT

Sample ID	Laboratory ID	Matrix	Date Sampled	Date Received
WH-FS-01@6'	Y204339-01	Soil	April 15, 2022 9:04	04/15/2022 12:12

Origins Laboratory, Inc.



*The results in this report apply to the samples analyzed in accordance with the chain of custody document. This analytical report must be reproduced in its entirety.*



Eagle Environmental Consulting, Inc.  
8000 W 44th Ave  
Wheat Ridge CO 80033

Martin C Eckert III  
Project Number: [none]  
Project: Noble - Cody #D #3-7

Origins Laboratory

F-012207-01-R1  
Effective Date: 01/09/12

Sample Receipt Checklist

Origins Work Order: Y204339 Client: Eagle  
Client Project ID: Cody D 3-7

Checklist Completed by: SG Shipped Via: HD  
(UPS, FedEx, Hand Delivered, Pick-up, etc.)  
Date/time completed: 4/15/22 Airbill #: N/A

Matrix(s) Received: (Check all that apply): ☒ Soil/Solid ☐ Water ☐ Other: \_\_\_\_\_  
(Describe)

Cooler Number/Temperature: 1 / 2.1 °C 1 °C 1 °C 1 °C

Thermometer ID: T004

Requirement Description	Yes	No	N/A	Comments (if any)
If samples require cooling, was the temperature between 0°C to ≤ 6°C <sup>(1)</sup> ?	<input checked="" type="checkbox"/>			
Is there ice present (document if blue ice is used)	<input checked="" type="checkbox"/>			
Are custody seals present on cooler? (if so, document in comments if they are signed and dated, broken or intact)		<input checked="" type="checkbox"/>		
Are custody seals present on each sample container? (if so, document in comments if they are signed and dated, broken or intact)		<input checked="" type="checkbox"/>		
Were all samples received intact <sup>(1)</sup> ?	<input checked="" type="checkbox"/>			
Was adequate sample volume provided <sup>(1)</sup> ?	<input checked="" type="checkbox"/>			
Are short holding time analytes or samples with HTs due within 48 hours present <sup>(1)</sup> ?		<input checked="" type="checkbox"/>		
Is a chain-of-custody (COC) present and filled out completely <sup>(1)</sup> ?	<input checked="" type="checkbox"/>			
Does the COC agree with the number and type of sample bottles received <sup>(1)</sup> ?	<input checked="" type="checkbox"/>			
Do the sample IDs on the bottle labels match the COC <sup>(1)</sup> ?	<input checked="" type="checkbox"/>			
Is the COC properly relinquished by the client with date and time recorded <sup>(1)</sup> ?	<input checked="" type="checkbox"/>			
For volatiles in water – is there headspace (> ¼ inch bubble) present? If yes, contact client and note in narrative.			<input checked="" type="checkbox"/>	
Are samples preserved that require preservation and was it checked <sup>(1)</sup> ? (note ID of confirmation instrument used in comments) / (preservation is not confirmed for subcontracted analyses in order to insure sample integrity) (pH < 2 for samples preserved with HNO <sub>3</sub> , HCL, H <sub>2</sub> SO <sub>4</sub> ) / (pH > 10 for samples preserved with NaAsO <sub>2</sub> +NaOH, ZnAc+NaOH)			<input checked="" type="checkbox"/>	
Additional Comments (if any):				

<sup>(1)</sup>If NO, then contact the client before proceeding with analysis and note date/time and person contacted as well as the corrective action to in the additional comments (above) and the case narrative.

Reviewed by (Project Manager) MP

4/18/22  
Date/Time Reviewed

Origins Laboratory, Inc.

*J. Bynon*

The results in this report apply to the samples analyzed in accordance with the chain of custody document. This analytical report must be reproduced in its entirety.

Eagle Environmental Consulting, Inc.  
8000 W 44th Ave  
Wheat Ridge CO 80033

Martin C Eckert III  
Project Number: [none]  
Project: Noble - Cody #D #3-7

WH-FS-01@6'

4/15/2022 9:04:00AM

Analyte	Result	Min Detection Limit	Reporting Limit	Units	Dilution	Batch	Prepared	Analyzed	Notes
---------	--------	---------------------	-----------------	-------	----------	-------	----------	----------	-------

Origins Laboratory, Inc.  
Y204339-01 (Soil)

## Boron (DTPA Sorbitol)

Boron	2.21	0.0994	mg/L	1	B2D1511	04/15/2022	04/18/2022	
-------	------	--------	------	---	---------	------------	------------	--

## DRO/ORO by EPA 8015D

Diesel (C10-C28)	ND	25.0	mg/kg	1	B2D1914	04/19/2022	04/23/2022	U
Residual Range Organics (C28-C40)	ND	100	"	"	"	"	"	U

Surrogate: o-Terphenyl	87.1 %	50-150			"	"	"	
------------------------	--------	--------	--	--	---	---	---	--

## GBTEX+TMBs by 8260D

1,2,4-Trimethylbenzene	ND	0.00200	mg/kg	1	B2D1605	04/16/2022	04/20/2022	U
1,3,5-Trimethylbenzene	ND	0.00200	"	"	"	"	"	U
Benzene	ND	0.00200	"	"	"	"	"	U
Ethylbenzene	ND	0.00200	"	"	"	"	"	U
Toluene	ND	0.00200	"	"	"	"	"	U
Xylenes, total	ND	0.00200	"	"	"	"	"	U
Gasoline Range Hydrocarbons	ND	0.200	"	"	"	"	"	U

Surrogate: 1,2-Dichloroethane-d4	97.6 %	70-130			"	"	"	
----------------------------------	--------	--------	--	--	---	---	---	--

Origins Laboratory, Inc.



The results in this report apply to the samples analyzed in accordance with the chain of custody document. This analytical report must be reproduced in its entirety.

Eagle Environmental Consulting, Inc.  
8000 W 44th Ave  
Wheat Ridge CO 80033

Martin C Eckert III  
Project Number: [none]  
Project: Noble - Cody #D #3-7

WH-FS-01@6'

4/15/2022 9:04:00AM

Analyte	Result	Min Detection Limit	Reporting Limit	Units	Dilution	Batch	Prepared	Analyzed	Notes
---------	--------	---------------------	-----------------	-------	----------	-------	----------	----------	-------

Origins Laboratory, Inc.  
Y204339-01 (Soil)

## GBTEX+TMBs by 8260D

Surrogate: Toluene-d8	102 %	70-130	B2D16 05	04/16/2022	04/20/2022
Surrogate: 4-Bromofluorobenzene	93.3 %	70-130	"	"	"

## Metals by Saturated Paste by EPA 6010

Calcium	18.0	0.499	meq/L	10	[CALC]	04/18/2022	04/19/2022
Magnesium	20.1	0.823	"	"	"	"	"
Sodium	35.2	0.435	"	"	"	"	"

## PAH by 8270D SIM

1-Methylnaphthalene	ND	0.000364	0.00067	mg/Kg	1	L611478	04/19/2022	04/21/2022
2-Methylnaphthalene	ND	0.000645	0.00067	"	"	"	"	"
Acenaphthene	ND	0.000304	0.00067	"	"	"	"	"
Anthracene	ND	0.000334	0.00067	"	"	"	"	"
Benzo(a)anthracene	ND	0.000493	0.00067	"	"	"	"	"
Benzo(a)pyrene	ND	0.000468	0.00067	"	"	"	"	"
Benzo(b)fluoranthene	ND	0.000585	0.00067	"	"	"	"	"
Benzo(k)fluoranthene	ND	0.000437	0.00067	"	"	"	"	"
Chrysene	ND	0.000624	0.00067	"	"	"	"	"
Dibenz(a,h)anthracene	ND	0.000614	0.00067	"	"	"	"	"
Fluoranthene	ND	0.000394	0.00067	"	"	"	"	"

Origins Laboratory, Inc.



The results in this report apply to the samples analyzed in accordance with the chain of custody document. This analytical report must be reproduced in its entirety.

Eagle Environmental Consulting, Inc.  
8000 W 44th Ave  
Wheat Ridge CO 80033

Martin C Eckert III  
Project Number: [none]  
Project: Noble - Cody #D #3-7

WH-FS-01@6'

4/15/2022 9:04:00AM

Analyte	Result	Min Detection Limit	Reporting Limit	Units	Dilution	Batch	Prepared	Analyzed	Notes
---------	--------	---------------------	-----------------	-------	----------	-------	----------	----------	-------

Waypoint Analytical, Inc.  
Y204339-01 (Soil)

## PAH by 8270D SIM

Fluorene	ND	0.000286	0.00067	mg/Kg	1	L611478	04/19/2022	04/21/2022
Indeno(1,2,3-cd)pyrene	ND	0.000627	0.00067	"	"	"	"	"
Naphthalene	ND	0.000484	0.00067	"	"	"	"	"
Pyrene	ND	0.000643	0.00067	"	"	"	"	"

Surrogate: 2-Fluorobiphenyl	44.8 %	33-115	"	"	"
Surrogate: 4-Terphenyl-d14	58.2 %	33-122	"	"	"
Surrogate: Nitrobenzene-d5	51.5 %	29-110	"	"	"

## pH in Soil by 9045D

pH	8.09	pH Units	1	B2D1805	04/20/2022	04/21/2022
----	------	----------	---	---------	------------	------------

## SAR by 20B Saturated Paste

SAR	8.06	SAR	1	B2D1801	04/18/2022	04/19/2022
-----	------	-----	---	---------	------------	------------

## Specific Conductance Mod. 9050A

Specific Conductance (EC)	5.47	0.00500	mmhos/cm	1	B2D1807	04/18/2022	04/19/2022
---------------------------	------	---------	----------	---	---------	------------	------------

Origins Laboratory, Inc.



The results in this report apply to the samples analyzed in accordance with the chain of custody document. This analytical report must be reproduced in its entirety.



Eagle Environmental Consulting, Inc.  
8000 W 44th Ave  
Wheat Ridge CO 80033

Martin C Eckert III  
Project Number: [none]  
Project: Noble - Cody #D #3-7

**Volatile Organic Compounds by GC/MS SW846 8260D - Quality Control**  
**Origins Laboratory, Inc.**

Analyte	Result	Reporting Limit	Units	Spike Level	Source Result	%REC	%REC Limits	RPD	RPD Limit	Notes
<b>Batch B2D1605 - EPA 5030 (soil)</b>										
<b>Blank (B2D1605-BLK1)</b>					Prepared: 04/16/2022 Analyzed: 04/20/2022					
1,2,4-Trimethylbenzene	ND	0.00200	mg/kg							U
1,3,5-Trimethylbenzene	ND	0.00200	"							U
Benzene	ND	0.00200	"							U
Ethylbenzene	ND	0.00200	"							U
Naphthalene	ND	0.0100	"							U
Toluene	ND	0.00200	"							U
Xylenes, total	ND	0.00200	"							U
Gasoline Range Hydrocarbons	ND	0.200	"							U
Surrogate: 1,2-Dichloroethane-d4	0.12		"	0.125		95.4	70-130			
Surrogate: Toluene-d8	0.13		"	0.125		100	70-130			
Surrogate: 4-Bromofluorobenzene	0.12		"	0.125		94.3	70-130			

Origins Laboratory, Inc.



The results in this report apply to the samples analyzed in accordance with the chain of custody document. This analytical report must be reproduced in its entirety.

Eagle Environmental Consulting, Inc.  
8000 W 44th Ave  
Wheat Ridge CO 80033

Martin C Eckert III  
Project Number: [none]  
Project: Noble - Cody #D #3-7

**Volatile Organic Compounds by GC/MS SW846 8260D - Quality Control**  
**Origins Laboratory, Inc.**

Analyte	Result	Reporting Limit	Units	Spike Level	Source Result	%REC	%REC Limits	RPD	RPD Limit	Notes
<b>Batch B2D1605 - EPA 5030 (soil)</b>										
<b>LCS (B2D1605-BS1)</b>					Prepared: 04/16/2022 Analyzed: 04/20/2022					
1,2,4-Trimethylbenzene	0.0948	0.00200	mg/kg	0.100		94.8	70-130			
1,3,5-Trimethylbenzene	0.0936	0.00200	"	0.100		93.6	70-130			
Benzene	0.0938	0.00200	"	0.100		93.8	70-130			
Ethylbenzene	0.107	0.00200	"	0.100		107	70-130			
Naphthalene	0.107	0.0100	"	0.100		107	70-130			
Toluene	0.0972	0.00200	"	0.100		97.2	70-130			
o-Xylene	0.105	0.00200	"	0.100		105	70-130			
m,p-Xylene	0.214	0.00400	"	0.200		107	70-130			
Surrogate: 1,2-Dichloroethane-d4	0.11		"	0.125		87.0	70-130			
Surrogate: Toluene-d8	0.12		"	0.125		99.8	70-130			
Surrogate: 4-Bromofluorobenzene	0.14		"	0.125		115	70-130			

Origins Laboratory, Inc.



*The results in this report apply to the samples analyzed in accordance with the chain of custody document. This analytical report must be reproduced in its entirety.*

Eagle Environmental Consulting, Inc.  
8000 W 44th Ave  
Wheat Ridge CO 80033

Martin C Eckert III  
Project Number: [none]  
Project: Noble - Cody #D #3-7

## Volatile Organic Compounds by GC/MS SW846 8260D - Quality Control

### Origins Laboratory, Inc.

Analyte	Result	Reporting Limit	Units	Spike Level	Source Result	%REC	%REC Limits	RPD	RPD Limit	Notes
Batch B2D1605 - EPA 5030 (soil)										
Matrix Spike (B2D1605-MS1)		Source: Y204317-01			Prepared: 04/16/2022 Analyzed: 04/20/2022					
1,2,4-Trimethylbenzene	0.0715	0.00200	mg/kg	0.100	ND	71.5	70-130			
1,3,5-Trimethylbenzene	0.0715	0.00200	"	0.100	ND	71.5	70-130			
Benzene	0.0841	0.00200	"	0.100	ND	84.1	70-130			
Ethylbenzene	0.0756	0.00200	"	0.100	ND	75.6	70-130			
Naphthalene	0.0817	0.0100	"	0.100	ND	81.7	70-130			
Toluene	0.0791	0.00200	"	0.100	ND	79.1	70-130			
o-Xylene	0.0772	0.00200	"	0.100	ND	77.2	70-130			
m,p-Xylene	0.151	0.00400	"	0.200	ND	75.4	70-130			
Surrogate: 1,2-Dichloroethane-d4	0.12		"	0.125		93.6	70-130			
Surrogate: Toluene-d8	0.12		"	0.125		96.3	70-130			
Surrogate: 4-Bromofluorobenzene	0.13		"	0.125		108	70-130			

Origins Laboratory, Inc.



The results in this report apply to the samples analyzed in accordance with the chain of custody document. This analytical report must be reproduced in its entirety.

Eagle Environmental Consulting, Inc.  
8000 W 44th Ave  
Wheat Ridge CO 80033

Martin C Eckert III  
Project Number: [none]  
Project: Noble - Cody #D #3-7

**Volatile Organic Compounds by GC/MS SW846 8260D - Quality Control**  
**Origins Laboratory, Inc.**

Analyte	Result	Reporting Limit	Units	Spike Level	Source Result	%REC	%REC Limits	RPD	RPD Limit	Notes
<b>Batch B2D1605 - EPA 5030 (soil)</b>										
<b>Matrix Spike Dup (B2D1605-MSD1)</b>		<b>Source: Y204317-01</b>			Prepared: 04/16/2022 Analyzed: 04/20/2022					
1,2,4-Trimethylbenzene	0.0807	0.00200	mg/kg	0.100	ND	80.7	70-130	12.0	20	
1,3,5-Trimethylbenzene	0.0811	0.00200	"	0.100	ND	81.1	70-130	12.6	20	
Benzene	0.0818	0.00200	"	0.100	ND	81.8	70-130	2.82	20	
Ethylbenzene	0.0836	0.00200	"	0.100	ND	83.6	70-130	10.1	20	
Naphthalene	0.0806	0.0100	"	0.100	ND	80.6	70-130	1.36	20	
Toluene	0.0820	0.00200	"	0.100	ND	82.0	70-130	3.67	20	
o-Xylene	0.0842	0.00200	"	0.100	ND	84.2	70-130	8.67	20	
m,p-Xylene	0.167	0.00400	"	0.200	ND	83.5	70-130	10.1	20	
Surrogate: 1,2-Dichloroethane-d4	0.12		"	0.125		97.2	70-130			
Surrogate: Toluene-d8	0.12		"	0.125		96.4	70-130			
Surrogate: 4-Bromofluorobenzene	0.13		"	0.125		107	70-130			

Origins Laboratory, Inc.



The results in this report apply to the samples analyzed in accordance with the chain of custody document. This analytical report must be reproduced in its entirety.

Eagle Environmental Consulting, Inc.  
8000 W 44th Ave  
Wheat Ridge CO 80033

Martin C Eckert III  
Project Number: [none]  
Project: Noble - Cody #D #3-7

**Volatile Organic Compounds by GC/MS SW846 8260D - Quality Control**  
**Origins Laboratory, Inc.**

Analyte	Result	Reporting Limit	Units	Spike Level	Source Result	%REC	%REC Limits	RPD	RPD Limit	Notes
Batch B2D1914 - EPA 3550B										
Blank (B2D1914-BLK1)					Prepared: 04/19/2022 Analyzed: 04/22/2022					
Diesel (C10-C28)	ND	25.0	mg/kg							U
Residual Range Organics (C28-C40)	ND	100	"							U
Surrogate: o-Terphenyl	24		"	24.9		96.5	50-150			

Origins Laboratory, Inc.



*The results in this report apply to the samples analyzed in accordance with the chain of custody document. This analytical report must be reproduced in its entirety.*

Eagle Environmental Consulting, Inc.  
8000 W 44th Ave  
Wheat Ridge CO 80033

Martin C Eckert III  
Project Number: [none]  
Project: Noble - Cody #D #3-7

## Extractable Petroleum Hydrocarbons by 8015D - Quality Control Origins Laboratory, Inc.

Analyte	Result	Reporting Limit	Units	Spike Level	Source Result	%REC	%REC Limits	RPD	RPD Limit	Notes
Batch B2D1914 - EPA 3550B										
LCS (B2D1914-BS1)					Prepared: 04/19/2022 Analyzed: 04/22/2022					
Diesel (C10-C28)	955	50.0	mg/kg	1000		95.5	70-130			
Residual Range Organics (C28-C40)	987	200	"	1000		98.7	70-130			
Surrogate: o-Terphenyl	50		"	49.8		99.7	50-150			

Origins Laboratory, Inc.



The results in this report apply to the samples analyzed in accordance with the chain of custody document. This analytical report must be reproduced in its entirety.



Eagle Environmental Consulting, Inc.  
8000 W 44th Ave  
Wheat Ridge CO 80033

Martin C Eckert III  
Project Number: [none]  
Project: Noble - Cody #D #3-7

**Extractable Petroleum Hydrocarbons by 8015D - Quality Control**  
**Origins Laboratory, Inc.**

Analyte	Result	Reporting Limit	Units	Spike Level	Source Result	%REC	%REC Limits	RPD	RPD Limit	Notes
---------	--------	-----------------	-------	-------------	---------------	------	-------------	-----	-----------	-------

**Batch B2D1914 - EPA 3550B**

Matrix Spike (B2D1914-MS1)		Source: Y204320-01			Prepared: 04/19/2022 Analyzed: 04/22/2022					
Diesel (C10-C28)	930	50.0	mg/kg	1000	ND	93.0	70-130			
Residual Range Organics (C28-C40)	854	200	"	1000	ND	85.4	70-130			
Surrogate: o-Terphenyl	44		"	49.8		87.9	50-150			

Origins Laboratory, Inc.



*The results in this report apply to the samples analyzed in accordance with the chain of custody document. This analytical report must be reproduced in its entirety.*

Eagle Environmental Consulting, Inc.  
8000 W 44th Ave  
Wheat Ridge CO 80033

Martin C Eckert III  
Project Number: [none]  
Project: Noble - Cody #D #3-7

**Extractable Petroleum Hydrocarbons by 8015D - Quality Control**  
**Origins Laboratory, Inc.**

Analyte	Result	Reporting Limit	Units	Spike Level	Source Result	%REC	%REC Limits	RPD	RPD Limit	Notes
---------	--------	-----------------	-------	-------------	---------------	------	-------------	-----	-----------	-------

**Batch B2D1914 - EPA 3550B**

Matrix Spike Dup (B2D1914-MSD1)		Source: Y204320-01			Prepared: 04/19/2022 Analyzed: 04/22/2022					
Diesel (C10-C28)	956	50.0	mg/kg	1000	ND	95.6	70-130	2.74	35	
Residual Range Organics (C28-C40)	926	200	"	1000	ND	92.6	70-130	8.18	35	
Surrogate: o-Terphenyl	46		"	49.8		92.1	50-150			

Origins Laboratory, Inc.



*The results in this report apply to the samples analyzed in accordance with the chain of custody document. This analytical report must be reproduced in its entirety.*



Eagle Environmental Consulting, Inc.  
8000 W 44th Ave  
Wheat Ridge CO 80033

Martin C Eckert III  
Project Number: [none]  
Project: Noble - Cody #D #3-7

## Extractable Petroleum Hydrocarbons by 8015D - Quality Control

### Origins Laboratory, Inc.

Analyte	Result	Reporting Limit	Units	Spike Level	Source Result	%REC	%REC Limits	RPD	RPD Limit	Notes
---------	--------	-----------------	-------	-------------	---------------	------	-------------	-----	-----------	-------

## Saturated Paste - Quality Control

### Origins Laboratory, Inc.

Analyte	Result	Reporting Limit	Units	Spike Level	Source Result	%REC	%REC Limits	RPD	RPD Limit	Notes
---------	--------	-----------------	-------	-------------	---------------	------	-------------	-----	-----------	-------

#### Batch B2D1805 - NO PREP

##### Duplicate (B2D1805-DUP1)

Source: Y204351-02

Prepared: 04/20/2022 Analyzed: 04/21/2022

pH	7.95		pH Units	7.80		1.90	25
----	------	--	----------	------	--	------	----

#### Batch B2D1807 - NO PREP

##### Blank (B2D1807-BLK1)

Prepared: 04/18/2022 Analyzed: 04/19/2022

Specific Conductance (EC)	0.000900	0.00500	mmhos/cm
---------------------------	----------	---------	----------

##### Duplicate (B2D1807-DUP1)

Source: Y204339-01

Prepared: 04/18/2022 Analyzed: 04/19/2022

Specific Conductance (EC)	4.84	0.00500	mmhos/cm	5.47		12.1	25
---------------------------	------	---------	----------	------	--	------	----

Origins Laboratory, Inc.



The results in this report apply to the samples analyzed in accordance with the chain of custody document. This analytical report must be reproduced in its entirety.

Eagle Environmental Consulting, Inc.  
8000 W 44th Ave  
Wheat Ridge CO 80033

Martin C Eckert III  
Project Number: [none]  
Project: Noble - Cody #D #3-7

**PAH by 8270D SIM - Quality Control**  
**Waypoint Analytical, Inc.**

Analyte	Result	Reporting Limit	Units	Spike Level	Source Result	%REC	%REC Limits	RPD	RPD Limit	Notes
---------	--------	-----------------	-------	-------------	---------------	------	-------------	-----	-----------	-------

**Batch L611478 - 3550B**

MSD (L 97924-MSD-L611478)		Source: 97924			Prepared: 04/19/2022 Analyzed: 04/21/2022					
Benzo(b)fluoranthene	0.0777	0.000585	mg/Kg	0.167	<0.000585	46.5	30-130	0.8	30	
Benzo(k)fluoranthene	0.09	0.000437	"	0.167	<0.000437	53.8	30-130	1.5	30	
Chrysene	0.0993	0.000624	"	0.167	<0.000624	59.4	30-130	3.6	30	
Dibenz(a,h)anthracene	0.103	0.000614	"	0.167	<0.000614	61.6	30-130	1.9	30	
Fluoranthene	0.0962	0.000394	"	0.167	<0.000394	57.6	30-130	3.6	30	
Fluorene	0.0935	0.000286	"	0.167	<0.000286	55.9	30-130	3.3	30	
Pyrene	0.0966	0.000643	"	0.167	<0.000643	57.8	30-130	5.4	30	
Indeno(1,2,3-cd)pyrene	0.0972	0.000627	"	0.167	<0.000627	58.2	30-130	5.7	30	
2-Methylnaphthalene	0.0827	0.000645	"	0.167	<0.000645	49.5	30-130	6.2	30	
Naphthalene	0.0838	0.000484	"	0.167	<0.000484	50.1	30-130	6.3	30	
Benzo(a)pyrene	0.099	0.000468	"	0.167	<0.000468	59.2	30-130	0.8	30	
1-Methylnaphthalene	0.0831	0.000364	"	0.167	<0.000364	49.7	30-130	7.8	30	
Anthracene	0.0921	0.000334	"	0.167	<0.000334	55.1	30-130	3.8	30	
Benzo(a)anthracene	0.0987	0.000493	"	0.167	<0.000493	59.1	30-130	5.2	30	
Acenaphthene	0.0874	0.000304	"	0.167	<0.000304	52.3	30-130	5.9	30	
Surrogate: Nitrobenzene-d5	54.6		"	0.333	188	54.6	29-110			
Surrogate: 2-Fluorobiphenyl	48.3		"	0.333	167	48.3	33-115			
Surrogate: 4-Terphenyl-d14	62.1		"	0.333	213	62.1	33-122			

MS (L 97924-MS-L611478)		Source: 97924			Prepared: 04/19/2022 Analyzed: 04/21/2022					
Chrysene	0.103	0.000624	mg/Kg	0.167	<0.000624	61.6	30-130			
Benzo(b)fluoranthene	0.0784	0.000585	"	0.167	<0.000585	46.9	30-130			
Benzo(a)pyrene	0.0998	0.000468	"	0.167	<0.000468	59.7	30-130			
Benzo(a)anthracene	0.104	0.000493	"	0.167	<0.000493	62.2	30-130			
Anthracene	0.0957	0.000334	"	0.167	<0.000334	57.3	30-130			
Acenaphthene	0.0928	0.000304	"	0.167	<0.000304	55.5	30-130			
Fluoranthene	0.0998	0.000394	"	0.167	<0.000394	59.7	30-130			

Origins Laboratory, Inc.



The results in this report apply to the samples analyzed in accordance with the chain of custody document. This analytical report must be reproduced in its entirety.

Eagle Environmental Consulting, Inc.  
8000 W 44th Ave  
Wheat Ridge CO 80033

Martin C Eckert III  
Project Number: [none]  
Project: Noble - Cody #D #3-7

**PAH by 8270D SIM - Quality Control**  
**Waypoint Analytical, Inc.**

Analyte	Result	Reporting Limit	Units	Spike Level	Source Result	%REC	%REC Limits	RPD	RPD Limit	Notes
---------	--------	-----------------	-------	-------------	---------------	------	-------------	-----	-----------	-------

**Batch L611478 - 3550B**

MS (L 97924-MS-L611478)		Source: 97924			Prepared: 04/19/2022 Analyzed: 04/21/2022					
2-Methylnaphthalene	0.088	0.000645	mg/Kg	0.167	<0.000645	52.6	30-130			
Dibenz(a,h)anthracene	0.105	0.000614	"	0.167	<0.000614	62.8	30-130			
1-Methylnaphthalene	0.0899	0.000364	"	0.167	<0.000364	53.8	30-130			
Indeno(1,2,3-cd)pyrene	0.103	0.000627	"	0.167	<0.000627	61.6	30-130			
Naphthalene	0.0893	0.000484	"	0.167	<0.000484	53.4	30-130			
Pyrene	0.102	0.000643	"	0.167	<0.000643	61	30-130			
Fluorene	0.0967	0.000286	"	0.167	<0.000286	57.9	30-130			
Benzo(k)fluoranthene	0.0914	0.000437	"	0.167	<0.000437	54.7	30-130			
Surrogate: 2-Fluorobiphenyl	60.6		"	0.333	167	60.6	33-115			
Surrogate: 4-Terphenyl-d14	77.4		"	0.333	213	77.4	33-122			
Surrogate: Nitrobenzene-d5	68.4		"	0.333	188	68.4	29-110			

LCS (LCS-L611478)		Prepared: 04/19/2022 Analyzed: 04/21/2022								
Anthracene	0.0941	0.000334	mg/Kg	0.167		56.3	30-130			
Pyrene	0.102	0.000643	"	0.167		61	30-130			
Fluoranthene	0.102	0.000394	"	0.167		61	30-130			
Dibenz(a,h)anthracene	0.114	0.000614	"	0.167		68.2	30-130			
Chrysene	0.102	0.000624	"	0.167		61	30-130			
Benzo(k)fluoranthene	0.103	0.000437	"	0.167		61.6	30-130			
Benzo(b)fluoranthene	0.0788	0.000585	"	0.167		47.1	30-130			
Benzo(a)pyrene	0.0975	0.000468	"	0.167		58.3	30-130			
Naphthalene	0.09	0.000484	"	0.167		53.8	30-130			
Benzo(a)anthracene	0.103	0.000493	"	0.167		61.6	30-130			
Acenaphthene	0.0942	0.000304	"	0.167		56.4	30-130			
2-Methylnaphthalene	0.0901	0.000645	"	0.167		53.9	30-130			
1-Methylnaphthalene	0.0903	0.000364	"	0.167		54	30-130			
Fluorene	0.0984	0.000286	"	0.167		58.9	30-130			

Origins Laboratory, Inc.



The results in this report apply to the samples analyzed in accordance with the chain of custody document. This analytical report must be reproduced in its entirety.



Eagle Environmental Consulting, Inc.  
8000 W 44th Ave  
Wheat Ridge CO 80033

Martin C Eckert III  
Project Number: [none]  
Project: Noble - Cody #D #3-7

**PAH by 8270D SIM - Quality Control**  
**Waypoint Analytical, Inc.**

Analyte	Result	Reporting Limit	Units	Spike Level	Source Result	%REC	%REC Limits	RPD	RPD Limit	Notes
---------	--------	-----------------	-------	-------------	---------------	------	-------------	-----	-----------	-------

**Batch L611478 - 3550B**

**LCS (LCS-L611478)**

Prepared: 04/19/2022 Analyzed: 04/21/2022

Indeno(1,2,3-cd)pyrene	0.109	0.000627	mg/Kg	0.167		65.2	30-130			
Surrogate: Nitrobenzene-d5	71.1		"	0.333		71.1	29-110			
Surrogate: 4-Terphenyl-d14	83.1		"	0.333		83.1	33-122			
Surrogate: 2-Fluorobiphenyl	64.2		"	0.333		64.2	33-115			

**LRB (LRB-L611478)**

Prepared: 04/19/2022 Analyzed: 04/21/2022

Benzo(k)fluoranthene	ND	0.00067	mg/Kg				-			
Pyrene	ND	0.00067	"				-			
Naphthalene	ND	0.00067	"				-			
Indeno(1,2,3-cd)pyrene	ND	0.00067	"				-			
Fluorene	ND	0.00067	"				-			
Fluoranthene	ND	0.00067	"				-			
1-Methylnaphthalene	ND	0.00067	"				-			
Chrysene	ND	0.00067	"				-			
Benzo(b)fluoranthene	ND	0.00067	"				-			
Benzo(a)pyrene	ND	0.00067	"				-			
Benzo(a)anthracene	ND	0.00067	"				-			
Anthracene	ND	0.00067	"				-			
Acenaphthene	ND	0.00067	"				-			
2-Methylnaphthalene	ND	0.00067	"				-			
Dibenz(a,h)anthracene	ND	0.00067	"				-			
Surrogate: Nitrobenzene-d5	58.8		"	0.333		58.8	29-110			
Surrogate: 2-Fluorobiphenyl	54.3		"	0.333		54.3	33-115			
Surrogate: 4-Terphenyl-d14	71.7		"	0.333		71.7	33-122			

Origins Laboratory, Inc.



The results in this report apply to the samples analyzed in accordance with the chain of custody document. This analytical report must be reproduced in its entirety.

Eagle Environmental Consulting, Inc.

8000 W 44th Ave

Wheat Ridge CO 80033

Martin C Eckert III

Project Number: [none]

Project: Noble - Cody #D #3-7

### Notes and Definitions

U Sample is Non-Detect.

ND Analyte NOT DETECTED at or above the reporting limit

RPD Relative Percent Difference

All soil results are reported on a wet weight basis.

Origins Laboratory, Inc.



*The results in this report apply to the samples analyzed in accordance with the chain of custody document. This analytical report must be reproduced in its entirety.*



May 09, 2022

Eagle Environmental Consulting, Inc.

Martin C Eckert III

8000 W 44th Ave

Wheat Ridge CO 80033

Project Name - Noble - Cody #D #3-7

Project Number - [none]

Attached are your analytical results for Noble - Cody #D #3-7 received by Origins Laboratory, Inc. April 27, 2022. This project is associated with Origins project number Y204651-01.

The analytical results in the following report were analyzed under the guidelines of EPA Methods. These methods are identified as follows; "SW" are defined in SW-846, "EPA" are defined in 40CFR part 136 and "SM" are defined in the most current revision of Standard Methods For the Examination of Water and Wastewater.

The analytical results apply specifically to the samples and analyses specified per the attached Chain of Custody. As such, this report shall not be reproduced except in full, without the written approval of Origin's laboratory.

Unless otherwise noted, the analytical results for all soil samples are reported on a wet weight basis. All analytical analyses were performed under NELAP guidelines unless noted by a data qualifier.

Any holding time exceedances, deviations from the method specifications or deviations from Origins Laboratory's Standard Operating Procedures are outlined in the case narrative.

Thank you for selecting Origins for your analytical needs. Please contact us with any questions concerning this report, or if we can help with anything at all.

Origins Laboratory, Inc.  
303.433.1322  
o-squad@oelabinc.com



1725 Elk Place, Denver, CO 80211 | Phone: 303.433.1322 | Fax: 303.265.9645



Eagle Environmental Consulting, Inc.

8000 W 44th Ave

Wheat Ridge CO 80033

Martin C Eckert III

Project Number: [none]

Project: Noble - Cody #D #3-7

## CROSS REFERENCE REPORT

Sample ID	Laboratory ID	Matrix	Date Sampled	Date Received
Background-01@3'	Y204651-01	Soil	April 15, 2022 9:08	04/27/2022 15:35

Origins Laboratory, Inc.



*The results in this report apply to the samples analyzed in accordance with the chain of custody document. This analytical report must be reproduced in its entirety.*



Eagle Environmental Consulting, Inc.  
8000 W 44th Ave  
Wheat Ridge CO 80033

Martin C Eckert III  
Project Number: [none]  
Project: Noble - Cody #D #3-7

Origins Laboratory

F-012207-01-R1  
Effective Date: 01/09/12

## Sample Receipt Checklist

Origins Work Order: 4204651

Client: Eagle

Client Project ID: Cody D 3-7

Checklist Completed by: SG

Shipped Via: HD

(UPS, FedEx, Hand Delivered, Pick-up, etc.)

Date/time completed: 4/28/22

Airbill #: N/A

Matrix(s) Received: (Check all that apply): X Soil/Solid

Water

Other:

(Describe)

Cooler Number/Temperature: 1, 0.4 °C

°C

°C

°C

Thermometer ID: T004

Requirement Description	Yes	No	N/A	Comments (if any)
If samples require cooling, was the temperature between 0°C to ≤ 6°C <sup>(1)</sup> ?	<input checked="" type="checkbox"/>	<input type="checkbox"/>	<input type="checkbox"/>	
Is there ice present (document if blue ice is used)	<input checked="" type="checkbox"/>	<input type="checkbox"/>	<input type="checkbox"/>	
Are custody seals present on cooler? (if so, document in comments if they are signed and dated, broken or intact)	<input type="checkbox"/>	<input checked="" type="checkbox"/>	<input type="checkbox"/>	
Are custody seals present on each sample container? (if so, document in comments if they are signed and dated, broken or intact)	<input type="checkbox"/>	<input checked="" type="checkbox"/>	<input type="checkbox"/>	
Were all samples received intact <sup>(1)</sup> ?	<input checked="" type="checkbox"/>	<input type="checkbox"/>	<input type="checkbox"/>	
Was adequate sample volume provided <sup>(1)</sup> ?	<input checked="" type="checkbox"/>	<input type="checkbox"/>	<input type="checkbox"/>	
Are short holding time analytes or samples with HTs due within 48 hours present <sup>(1)</sup> ?	<input type="checkbox"/>	<input checked="" type="checkbox"/>	<input type="checkbox"/>	
Is a chain-of-custody (COC) present and filled out completely <sup>(1)</sup> ?	<input checked="" type="checkbox"/>	<input type="checkbox"/>	<input type="checkbox"/>	
Does the COC agree with the number and type of sample bottles received <sup>(1)</sup> ?	<input checked="" type="checkbox"/>	<input type="checkbox"/>	<input type="checkbox"/>	
Do the sample IDs on the bottle labels match the COC <sup>(1)</sup> ?	<input checked="" type="checkbox"/>	<input type="checkbox"/>	<input type="checkbox"/>	
Is the COC properly relinquished by the client with date and time recorded <sup>(1)</sup> ?	<input checked="" type="checkbox"/>	<input type="checkbox"/>	<input type="checkbox"/>	
For volatiles in water – is there headspace (> ¼ inch bubble) present? If yes, contact client and note in narrative.	<input type="checkbox"/>	<input type="checkbox"/>	<input checked="" type="checkbox"/>	
Are samples preserved that require preservation and was it checked <sup>(1)</sup> ? (note ID of confirmation instrument used in comments) / (preservation is not confirmed for subcontracted analyses in order to insure sample integrity) (pH <2 for samples preserved with HNO <sub>3</sub> , HCL, H <sub>2</sub> SO <sub>4</sub> ) / (pH >10 for samples preserved with NaAsO <sub>2</sub> +NaOH, ZnAc+NaOH)	<input type="checkbox"/>	<input checked="" type="checkbox"/>	<input type="checkbox"/>	
Additional Comments (if any):				

<sup>(1)</sup>If NO, then contact the client before proceeding with analysis and note date/time and person contacted as well as the corrective action to in the additional comments (above) and the case narrative.

Reviewed by (Project Manager) DO

Date/Time Reviewed 4/29/22

Origins Laboratory, Inc.

*J. Bynon*

The results in this report apply to the samples analyzed in accordance with the chain of custody document. This analytical report must be reproduced in its entirety.



Eagle Environmental Consulting, Inc.  
8000 W 44th Ave  
Wheat Ridge CO 80033

Martin C Eckert III  
Project Number: [none]  
Project: Noble - Cody #D #3-7

**Background-01@3'**  
**4/15/2022 9:08:00AM**

Analyte	Result	Reporting Limit	Units	Dilution	Batch	Analyst	Prepared	Analyzed	Notes
---------	--------	-----------------	-------	----------	-------	---------	----------	----------	-------

**Origins Laboratory, Inc.**  
**Y204651-01 (Soil)**

**Boron (DTPA Sorbitol)**

Boron	2.46	0.101	mg/L	1	B2D2910	KAP	04/29/2022	05/02/2022
-------	------	-------	------	---	---------	-----	------------	------------

**Metals by Saturated Paste by EPA 6010**

Calcium	23.6	0.499	meq/L	10	[CALC]	KAP	04/29/2022	05/02/2022
Magnesium	16.5	0.823	"	"	"	KAP	"	"
Sodium	44.5	0.435	"	"	"	KAP	"	"

**SAR by 20B Saturated Paste**

SAR	9.93		SAR	1	B2D2913	KAP	"	"
-----	------	--	-----	---	---------	-----	---	---

**Specific Conductance Mod. 9050A**

Specific Conductance (EC)	6.50	0.00500	mmhos/cm	1	B2D2916	TSH	04/29/2022	04/30/2022
---------------------------	------	---------	----------	---	---------	-----	------------	------------

Origins Laboratory, Inc.



*The results in this report apply to the samples analyzed in accordance with the chain of custody document. This analytical report must be reproduced in its entirety.*

Eagle Environmental Consulting, Inc.  
8000 W 44th Ave  
Wheat Ridge CO 80033

Martin C Eckert III  
Project Number: [none]  
Project: Noble - Cody #D #3-7

**Saturated Paste - Quality Control**  
**Origins Laboratory, Inc.**

Analyte	Result	Reporting Limit	Units	Spike Level	Source Result	%REC	%REC Limits	RPD	RPD Limit	Notes
<b>Batch B2D2916 - NO PREP</b>										
<b>Blank (B2D2916-BLK1)</b>					Prepared: 04/29/2022 Analyzed: 04/30/2022					
Specific Conductance (EC)	0.00200	0.00500	mmhos/cm							
<b>Duplicate (B2D2916-DUP1)</b>					<b>Source: Y204645-05</b> Prepared: 04/29/2022 Analyzed: 04/30/2022					
Specific Conductance (EC)	0.828	0.00500	mmhos/cm		0.633			26.7	25	QR-DUP

Origins Laboratory, Inc.



*The results in this report apply to the samples analyzed in accordance with the chain of custody document. This analytical report must be reproduced in its entirety.*

Eagle Environmental Consulting, Inc.

8000 W 44th Ave

Wheat Ridge CO 80033

Martin C Eckert III

Project Number: [none]

Project: Noble - Cody #D #3-7

### Notes and Definitions

QR-DUP RPD exceeds QC acceptance criteria, this indicates source sample is not homogenous.

ND Analyte NOT DETECTED at or above the reporting limit

RPD Relative Percent Difference

All soil results are reported at a wet weight basis.

Origins Laboratory, Inc.



*The results in this report apply to the samples analyzed in accordance with the chain of custody document. This analytical report must be reproduced in its entirety.*





May 31, 2022

Eagle Environmental Consulting, Inc.

Martin C Eckert III

8000 W 44th Ave

Wheat Ridge CO 80033

Project Name - Noble - Cody #D #3-7

Project Number - [none]

Attached are your analytical results for Noble - Cody #D #3-7 received by Origins Laboratory, Inc. May 23, 2022. This project is associated with Origins project number Y205589-01.

The analytical results in the following report were analyzed under the guidelines of EPA Methods. These methods are identified as follows; "SW" are defined in SW-846, "EPA" are defined in 40CFR part 136 and "SM" are defined in the most current revision of Standard Methods For the Examination of Water and Wastewater.

The analytical results apply specifically to the samples and analyses specified per the attached Chain of Custody. As such, this report shall not be reproduced except in full, without the written approval of Origin's laboratory.

Unless otherwise noted, the analytical results for all soil samples are reported on a wet weight basis. All analytical analyses were performed under NELAP guidelines unless noted by a data qualifier.

Any holding time exceedances, deviations from the method specifications or deviations from Origins Laboratory's Standard Operating Procedures are outlined in the case narrative.

Thank you for selecting Origins for your analytical needs. Please contact us with any questions concerning this report, or if we can help with anything at all.

Origins Laboratory, Inc.  
303.433.1322  
o-squad@oelabinc.com



1725 Elk Place, Denver, CO 80211 | Phone: 303.433.1322 | Fax: 303.265.9645

Eagle Environmental Consulting, Inc.

8000 W 44th Ave

Wheat Ridge CO 80033

Martin C Eckert III

Project Number: [none]

Project: Noble - Cody #D #3-7

### CROSS REFERENCE REPORT

Sample ID	Laboratory ID	Matrix	Date Sampled	Date Received
FL-SS-01@3'	Y205589-01	Soil	May 23, 2022 10:54	05/23/2022 17:00

Origins Laboratory, Inc.



*The results in this report apply to the samples analyzed in accordance with the chain of custody document. This analytical report must be reproduced in its entirety.*

Eagle Environmental Consulting, Inc.  
8000 W 44th Ave  
Wheat Ridge CO 80033

Martin C Eckert III  
Project Number: [none]  
Project: Noble - Cody #D #3-7

www.originslaboratory.com

YASSA

page | of

ORIGINS  
LABORATORY, INC

Client: Eagle Environmental Consulting  
Address: 8000 W 44th Ave  
Wheat Ridge, CO 80033  
Telephone Number: 303-433-0174  
Email Address: mce@eagle-enviro.com

Project Manager: Martin Eckert III  
Project Name: Cody #D #3-7  
Project Number: -  
Samples Collected By: EA

Fax: 303.265.9645 | Phone: 303.433.1322 | Denver, CO 80211

Sample ID Description	Date Sampled	Time Sampled	# of Containers	Preservative				Matrix	Analysis	Sample Instructions
				Unpreserved	HCl	HNO <sub>3</sub>	Other			
FL-55-01Q3	05-23-02	1154	2	X				Soil	EC, SAR, pH by EC-1000	1
								Groundwater	Saturated base flow	2
								Other	NO <sub>3</sub> needed	3
								Air Summary		4
								Container #		5
								Other		6
										7
										8
										9
										10

Relinquished By: C. L. Hughes  
Relinquished By: [Signature]  
Date: 05-23-2002  
Time: 1700

Received By: [Signature]  
Received By: [Signature]  
Date: 5/23/02  
Time: 1700

Turnaround Time:  
Same Day ☐ 24 Hr ☐  
48 Hr ☐ 72 Hr ☐  
Standard ☒

Date Results Needed: 5/23/02

Temp Received: 47

Ball to Cole

Origins Laboratory, Inc.

Bynon

The results in this report apply to the samples analyzed in accordance with the chain of custody document. This analytical report must be reproduced in its entirety.



Eagle Environmental Consulting, Inc.  
8000 W 44th Ave  
Wheat Ridge CO 80033

Martin C Eckert III  
Project Number: [none]  
Project: Noble - Cody #D #3-7

Origins Laboratory

F-012207-01-R1  
Effective Date: 01/09/12

## Sample Receipt Checklist

Origins Work Order: Y205589

Client: Eagle

Client Project ID: Cody D 3-7

Checklist Completed by: SG

Shipped Via: HD

(UPS, FedEx, Hand Delivered, Pick-up, etc.)

Date/time completed: 5/24/22

Airbill #: N/A

Matrix(s) Received: (Check all that apply): ☒ Soil/Solid

☐ Water

☐ Other:

(Describe)

Cooler Number/Temperature: 1 4.7 °C

1 °C

1 °C

1 °C

Thermometer ID: T004

Requirement Description	Yes	No	N/A	Comments (if any)
If samples require cooling, was the temperature between 0°C to ≤ 6°C <sup>(1)</sup> ?	<input checked="" type="checkbox"/>	<input type="checkbox"/>	<input type="checkbox"/>	
Is there ice present (document if blue ice is used)	<input checked="" type="checkbox"/>	<input type="checkbox"/>	<input type="checkbox"/>	
Are custody seals present on cooler? (if so, document in comments if they are signed and dated, broken or intact)	<input type="checkbox"/>	<input checked="" type="checkbox"/>	<input type="checkbox"/>	
Are custody seals present on each sample container? (if so, document in comments if they are signed and dated, broken or intact)	<input type="checkbox"/>	<input checked="" type="checkbox"/>	<input type="checkbox"/>	
Were all samples received intact <sup>(1)</sup> ?	<input checked="" type="checkbox"/>	<input type="checkbox"/>	<input type="checkbox"/>	
Was adequate sample volume provided <sup>(1)</sup> ?	<input checked="" type="checkbox"/>	<input type="checkbox"/>	<input type="checkbox"/>	
Are short holding time analytes or samples with HTs due within 48 hours present <sup>(1)</sup> ?	<input type="checkbox"/>	<input checked="" type="checkbox"/>	<input type="checkbox"/>	
Is a chain-of-custody (COC) present and filled out completely <sup>(1)</sup> ?	<input checked="" type="checkbox"/>	<input type="checkbox"/>	<input type="checkbox"/>	
Does the COC agree with the number and type of sample bottles received <sup>(1)</sup> ?	<input checked="" type="checkbox"/>	<input type="checkbox"/>	<input type="checkbox"/>	
Do the sample IDs on the bottle labels match the COC <sup>(1)</sup> ?	<input checked="" type="checkbox"/>	<input type="checkbox"/>	<input type="checkbox"/>	
Is the COC properly relinquished by the client with date and time recorded <sup>(1)</sup> ?	<input checked="" type="checkbox"/>	<input type="checkbox"/>	<input type="checkbox"/>	
For volatiles in water – is there headspace (> ¼ inch bubble) present? If yes, contact client and note in narrative.	<input type="checkbox"/>	<input type="checkbox"/>	<input checked="" type="checkbox"/>	
Are samples preserved that require preservation and was it checked <sup>(1)</sup> ? (note ID of confirmation instrument used in comments) / (preservation is not confirmed for subcontracted analyses in order to insure sample integrity)/(pH <2 for samples preserved with HNO <sub>3</sub> , HCL, H <sub>2</sub> SO <sub>4</sub> ) / (pH > 10 for samples preserved with NaAsO <sub>2</sub> +NaOH, ZnAc+NaOH)	<input type="checkbox"/>	<input type="checkbox"/>	<input checked="" type="checkbox"/>	
Additional Comments (if any):				

<sup>(1)</sup> If NO, then contact the client before proceeding with analysis and note date/time and person contacted as well as the corrective action to in the additional comments (above) and the case narrative.

Reviewed by (Project Manager) JP

Date/Time Reviewed 5/25/22

Origins Laboratory, Inc.

*J. Bynon*

The results in this report apply to the samples analyzed in accordance with the chain of custody document. This analytical report must be reproduced in its entirety.

Eagle Environmental Consulting, Inc.  
8000 W 44th Ave  
Wheat Ridge CO 80033

Martin C Eckert III  
Project Number: [none]  
Project: Noble - Cody #D #3-7

FL-SS-01@3'

5/23/2022 10:54:00AM

Analyte	Result	Min Detection Limit	Reporting Limit	Units	Dilution	Batch	Prepared	Analyzed	Notes
---------	--------	---------------------	-----------------	-------	----------	-------	----------	----------	-------

**Origins Laboratory, Inc.**  
**Y205589-01 (Soil)**

**Boron (DTPA Sorbitol)**

Boron	ND	0.101	mg/L	1	B2E2504	05/25/2022	05/26/2022	
-------	----	-------	------	---	---------	------------	------------	--

**DRO/ORO by EPA 8015D**

Diesel (C10-C28)	ND	25.0	mg/kg	1	B2E2402	05/24/2022	05/25/2022	U
Residual Range Organics (C28-C40)	ND	100	"	"	"	"	"	U

Surrogate: o-Terphenyl	77.7 %	50-150	"	"	"	"	"	"
------------------------	--------	--------	---	---	---	---	---	---

**GBTEX+TMBs by 8260D**

1,2,4-Trimethylbenzene	ND	0.00200	mg/kg	1	B2E2401	05/24/2022	05/24/2022	U
1,3,5-Trimethylbenzene	ND	0.00200	"	"	"	"	"	U
Benzene	ND	0.00200	"	"	"	"	"	U
Ethylbenzene	ND	0.00200	"	"	"	"	"	U
Toluene	ND	0.00200	"	"	"	"	"	U
Xylenes, total	ND	0.00200	"	"	"	"	"	U
Gasoline Range Hydrocarbons	ND	0.200	"	"	"	"	"	U

Surrogate: 1,2-Dichloroethane-d4	109 %	70-130	"	"	"	"	"	"
----------------------------------	-------	--------	---	---	---	---	---	---

Origins Laboratory, Inc.



The results in this report apply to the samples analyzed in accordance with the chain of custody document. This analytical report must be reproduced in its entirety.

Eagle Environmental Consulting, Inc.  
8000 W 44th Ave  
Wheat Ridge CO 80033

Martin C Eckert III  
Project Number: [none]  
Project: Noble - Cody #D #3-7

FL-SS-01@3'

5/23/2022 10:54:00AM

Analyte	Result	Min Detection Limit	Reporting Limit	Units	Dilution	Batch	Prepared	Analyzed	Notes
---------	--------	---------------------	-----------------	-------	----------	-------	----------	----------	-------

**Origins Laboratory, Inc.**  
**Y205589-01 (Soil)**

**GBTEX+TMBs by 8260D**

Surrogate: Toluene-d8	97.4 %	70-130	B2E24 01	05/24/2022	05/24/2022
Surrogate: 4-Bromofluorobenzene	98.8 %	70-130	"	"	"

**Metals by Saturated Paste by EPA 6010**

Calcium	1.27	0.499	meq/L	10	[CALC]	05/25/2022	05/26/2022
Magnesium	ND	0.823	"	"	"	"	"
Sodium	ND	0.435	"	"	"	"	"

**PAH by 8270D SIM**

1-Methylnaphthalene	ND	0.00182	0.00335	mg/Kg	5	L618305	05/26/2022	05/26/2022
2-Methylnaphthalene	ND	0.00323	0.00335	"	"	"	"	"
Acenaphthene	ND	0.00152	0.00335	"	"	"	"	"
Anthracene	ND	0.00167	0.00335	"	"	"	"	"
Benzo(a)anthracene	ND	0.00247	0.00335	"	"	"	"	"
Benzo(a)pyrene	ND	0.00234	0.00335	"	"	"	"	"
Benzo(b)fluoranthene	ND	0.00293	0.00335	"	"	"	"	"
Benzo(k)fluoranthene	ND	0.00219	0.00335	"	"	"	"	"
Chrysene	ND	0.00312	0.00335	"	"	"	"	"
Dibenz(a,h)anthracene	ND	0.00307	0.00335	"	"	"	"	"
Fluoranthene	ND	0.00197	0.00335	"	"	"	"	"

Origins Laboratory, Inc.



The results in this report apply to the samples analyzed in accordance with the chain of custody document. This analytical report must be reproduced in its entirety.



Eagle Environmental Consulting, Inc.  
8000 W 44th Ave  
Wheat Ridge CO 80033

Martin C Eckert III  
Project Number: [none]  
Project: Noble - Cody #D #3-7

FL-SS-01@3'

5/23/2022 10:54:00AM

Analyte	Result	Min Detection Limit	Reporting Limit	Units	Dilution	Batch	Prepared	Analyzed	Notes
---------	--------	---------------------	-----------------	-------	----------	-------	----------	----------	-------

**Waypoint Analytical, Inc.**  
Y205589-01 (Soil)

**PAH by 8270D SIM**

Fluorene	ND	0.00143	0.00335	mg/Kg	5	L618305	05/26/2022	05/26/2022
Indeno(1,2,3-cd)pyrene	ND	0.00314	0.00335	"	"	"	"	"
Naphthalene	ND	0.00242	0.00335	"	"	"	"	"
Pyrene	ND	0.00322	0.00335	"	"	"	"	"

Surrogate: 2-Fluorobiphenyl	54.7 %	33-115	"	"	"
Surrogate: 4-Terphenyl-d14	73.6 %	33-122	"	"	"
Surrogate: Nitrobenzene-d5	52.9 %	29-110	"	"	"

**pH in Soil by 9045D**

pH	8.27	pH Units	1	B2E2502	05/25/2022	05/26/2022
----	------	----------	---	---------	------------	------------

**SAR by 20B Saturated Paste**

SAR	0.0859	SAR	1	B2E2501	05/25/2022	05/26/2022
-----	--------	-----	---	---------	------------	------------

**Specific Conductance Mod. 9050A**

Specific Conductance (EC)	0.218	0.00500	mmhos/cm	1	B2E2502	05/25/2022	05/26/2022
---------------------------	-------	---------	----------	---	---------	------------	------------

Origins Laboratory, Inc.



The results in this report apply to the samples analyzed in accordance with the chain of custody document. This analytical report must be reproduced in its entirety.

Eagle Environmental Consulting, Inc.  
8000 W 44th Ave  
Wheat Ridge CO 80033

Martin C Eckert III  
Project Number: [none]  
Project: Noble - Cody #D #3-7

**Volatile Organic Compounds by GC/MS SW846 8260D - Quality Control**  
**Origins Laboratory, Inc.**

Analyte	Result	Reporting Limit	Units	Spike Level	Source Result	%REC	%REC Limits	RPD	RPD Limit	Notes
<b>Batch B2E2401 - EPA 5030 (soil)</b>										
<b>Blank (B2E2401-BLK1)</b>					Prepared: 05/24/2022 Analyzed: 05/24/2022					
1,2,4-Trimethylbenzene	ND	0.00200	mg/kg							U
1,3,5-Trimethylbenzene	ND	0.00200	"							U
Benzene	ND	0.00200	"							U
Ethylbenzene	ND	0.00200	"							U
Naphthalene	ND	0.0100	"							U
Toluene	ND	0.00200	"							U
Xylenes, total	ND	0.00200	"							U
Gasoline Range Hydrocarbons	ND	0.200	"							U
Surrogate: 1,2-Dichloroethane-d4	0.13		"	0.125	100		70-130			
Surrogate: Toluene-d8	0.12		"	0.125	99.7		70-130			
Surrogate: 4-Bromofluorobenzene	0.12		"	0.125	99.5		70-130			

Origins Laboratory, Inc.



The results in this report apply to the samples analyzed in accordance with the chain of custody document. This analytical report must be reproduced in its entirety.

Eagle Environmental Consulting, Inc.  
8000 W 44th Ave  
Wheat Ridge CO 80033

Martin C Eckert III  
Project Number: [none]  
Project: Noble - Cody #D #3-7

**Volatile Organic Compounds by GC/MS SW846 8260D - Quality Control**  
**Origins Laboratory, Inc.**

Analyte	Result	Reporting Limit	Units	Spike Level	Source Result	%REC	%REC Limits	RPD	RPD Limit	Notes
---------	--------	-----------------	-------	-------------	---------------	------	-------------	-----	-----------	-------

**Batch B2E2401 - EPA 5030 (soil)**

**LCS (B2E2401-BS1)**

Prepared: 05/24/2022 Analyzed: 05/24/2022

1,2,4-Trimethylbenzene	0.0955	0.00200	mg/kg	0.100		95.5	70-130			
1,3,5-Trimethylbenzene	0.0957	0.00200	"	0.100		95.7	70-130			
Benzene	0.0950	0.00200	"	0.100		95.0	70-130			
Ethylbenzene	0.0982	0.00200	"	0.100		98.2	70-130			
Naphthalene	0.0953	0.0100	"	0.100		95.3	70-130			
Toluene	0.0960	0.00200	"	0.100		96.0	70-130			
o-Xylene	0.0961	0.00200	"	0.100		96.1	70-130			
m,p-Xylene	0.201	0.00400	"	0.200		100	70-130			
Surrogate: 1,2-Dichloroethane-d4	0.12		"	0.125		97.7	70-130			
Surrogate: Toluene-d8	0.12		"	0.125		96.4	70-130			
Surrogate: 4-Bromofluorobenzene	0.13		"	0.125		104	70-130			

Origins Laboratory, Inc.



The results in this report apply to the samples analyzed in accordance with the chain of custody document. This analytical report must be reproduced in its entirety.



Eagle Environmental Consulting, Inc.  
8000 W 44th Ave  
Wheat Ridge CO 80033

Martin C Eckert III  
Project Number: [none]  
Project: Noble - Cody #D #3-7

**Volatile Organic Compounds by GC/MS SW846 8260D - Quality Control**  
**Origins Laboratory, Inc.**

Analyte	Result	Reporting Limit	Units	Spike Level	Source Result	%REC	%REC Limits	RPD	RPD Limit	Notes
---------	--------	-----------------	-------	-------------	---------------	------	-------------	-----	-----------	-------

**Batch B2E2401 - EPA 5030 (soil)**

Matrix Spike (B2E2401-MS1)		Source: Y205558-01			Prepared: 05/24/2022 Analyzed: 05/24/2022					
1,2,4-Trimethylbenzene	0.107	0.00200	mg/kg	0.100	ND	107	70-130			
1,3,5-Trimethylbenzene	0.107	0.00200	"	0.100	ND	107	70-130			
Benzene	0.101	0.00200	"	0.100	ND	101	70-130			
Ethylbenzene	0.109	0.00200	"	0.100	ND	109	70-130			
Naphthalene	0.104	0.0100	"	0.100	ND	104	70-130			
Toluene	0.104	0.00200	"	0.100	ND	104	70-130			
o-Xylene	0.107	0.00200	"	0.100	ND	107	70-130			
m,p-Xylene	0.224	0.00400	"	0.200	ND	112	70-130			
Surrogate: 1,2-Dichloroethane-d4	0.12		"	0.125		97.5	70-130			
Surrogate: Toluene-d8	0.12		"	0.125		97.3	70-130			
Surrogate: 4-Bromofluorobenzene	0.13		"	0.125		106	70-130			

Origins Laboratory, Inc.



*The results in this report apply to the samples analyzed in accordance with the chain of custody document. This analytical report must be reproduced in its entirety.*

Eagle Environmental Consulting, Inc.  
8000 W 44th Ave  
Wheat Ridge CO 80033

Martin C Eckert III  
Project Number: [none]  
Project: Noble - Cody #D #3-7

**Volatile Organic Compounds by GC/MS SW846 8260D - Quality Control**  
**Origins Laboratory, Inc.**

Analyte	Result	Reporting Limit	Units	Spike Level	Source Result	%REC	%REC Limits	RPD	RPD Limit	Notes
<b>Batch B2E2401 - EPA 5030 (soil)</b>										
<b>Matrix Spike Dup (B2E2401-MSD1)</b>		<b>Source: Y205558-01</b>			Prepared: 05/24/2022 Analyzed: 05/24/2022					
1,2,4-Trimethylbenzene	0.102	0.00200	mg/kg	0.100	ND	102	70-130	4.73	20	
1,3,5-Trimethylbenzene	0.103	0.00200	"	0.100	ND	103	70-130	4.24	20	
Benzene	0.0974	0.00200	"	0.100	ND	97.4	70-130	4.02	20	
Ethylbenzene	0.106	0.00200	"	0.100	ND	106	70-130	2.27	20	
Naphthalene	0.101	0.0100	"	0.100	ND	101	70-130	3.67	20	
Toluene	0.0984	0.00200	"	0.100	ND	98.4	70-130	5.90	20	
o-Xylene	0.104	0.00200	"	0.100	ND	104	70-130	3.20	20	
m,p-Xylene	0.218	0.00400	"	0.200	ND	109	70-130	2.79	20	
Surrogate: 1,2-Dichloroethane-d4	0.12		"	0.125		97.1	70-130			
Surrogate: Toluene-d8	0.12		"	0.125		95.3	70-130			
Surrogate: 4-Bromofluorobenzene	0.13		"	0.125		108	70-130			

Origins Laboratory, Inc.



The results in this report apply to the samples analyzed in accordance with the chain of custody document. This analytical report must be reproduced in its entirety.

Eagle Environmental Consulting, Inc.  
8000 W 44th Ave  
Wheat Ridge CO 80033

Martin C Eckert III  
Project Number: [none]  
Project: Noble - Cody #D #3-7

**Volatile Organic Compounds by GC/MS SW846 8260D - Quality Control**  
**Origins Laboratory, Inc.**

Analyte	Result	Reporting Limit	Units	Spike Level	Source Result	%REC	%REC Limits	RPD	RPD Limit	Notes
---------	--------	-----------------	-------	-------------	---------------	------	-------------	-----	-----------	-------

**Batch B2E2402 - EPA 3550B**

**Blank (B2E2402-BLK1)**

Prepared: 05/24/2022 Analyzed: 05/25/2022

Diesel (C10-C28)	ND	25.0	mg/kg							U
Residual Range Organics (C28-C40)	ND	100	"							U
Surrogate: o-Terphenyl	20		"	24.9		78.7	50-150			

Origins Laboratory, Inc.



*The results in this report apply to the samples analyzed in accordance with the chain of custody document. This analytical report must be reproduced in its entirety.*



Eagle Environmental Consulting, Inc.  
8000 W 44th Ave  
Wheat Ridge CO 80033

Martin C Eckert III  
Project Number: [none]  
Project: Noble - Cody #D #3-7

Extractable Petroleum Hydrocarbons by 8015D - Quality Control  
Origins Laboratory, Inc.

Analyte	Result	Reporting Limit	Units	Spike Level	Source Result	%REC	%REC Limits	RPD	RPD Limit	Notes
Batch B2E2402 - EPA 3550B										
LCS (B2E2402-BS1)					Prepared: 05/24/2022 Analyzed: 05/25/2022					
Diesel (C10-C28)	1030	50.0	mg/kg	1000		103	70-130			
Residual Range Organics (C28-C40)	1120	200	"	1000		112	70-130			
Surrogate: o-Terphenyl	49		"	49.8		99.4	50-150			

Origins Laboratory, Inc.



The results in this report apply to the samples analyzed in accordance with the chain of custody document. This analytical report must be reproduced in its entirety.

Eagle Environmental Consulting, Inc.  
8000 W 44th Ave  
Wheat Ridge CO 80033

Martin C Eckert III  
Project Number: [none]  
Project: Noble - Cody #D #3-7

**Extractable Petroleum Hydrocarbons by 8015D - Quality Control**  
**Origins Laboratory, Inc.**

Analyte	Result	Reporting Limit	Units	Spike Level	Source Result	%REC	%REC Limits	RPD	RPD Limit	Notes
---------	--------	-----------------	-------	-------------	---------------	------	-------------	-----	-----------	-------

**Batch B2E2402 - EPA 3550B**

Matrix Spike (B2E2402-MS1)		Source: Y205558-01			Prepared: 05/24/2022 Analyzed: 05/25/2022					
Diesel (C10-C28)	762	50.0	mg/kg	1000	ND	76.2	70-130			
Residual Range Organics (C28-C40)	839	200	"	1000	ND	83.9	70-130			
Surrogate: o-Terphenyl	43		"	49.8		85.6	50-150			

Origins Laboratory, Inc.



*The results in this report apply to the samples analyzed in accordance with the chain of custody document. This analytical report must be reproduced in its entirety.*

Eagle Environmental Consulting, Inc.  
8000 W 44th Ave  
Wheat Ridge CO 80033

Martin C Eckert III  
Project Number: [none]  
Project: Noble - Cody #D #3-7

## Extractable Petroleum Hydrocarbons by 8015D - Quality Control Origins Laboratory, Inc.

Analyte	Result	Reporting Limit	Units	Spike Level	Source Result	%REC	%REC Limits	RPD	RPD Limit	Notes
---------	--------	-----------------	-------	-------------	---------------	------	-------------	-----	-----------	-------

Batch B2E2402 - EPA 3550B

Matrix Spike Dup (B2E2402-MSD1)		Source: Y205558-01			Prepared: 05/24/2022 Analyzed: 05/25/2022					
Diesel (C10-C28)	893	50.0	mg/kg	1000	ND	89.3	70-130	15.8	35	
Residual Range Organics (C28-C40)	1030	200	"	1000	ND	103	70-130	20.8	35	
Surrogate: o-Terphenyl	51		"	49.8		102	50-150			

Origins Laboratory, Inc.



The results in this report apply to the samples analyzed in accordance with the chain of custody document. This analytical report must be reproduced in its entirety.

Eagle Environmental Consulting, Inc.  
8000 W 44th Ave  
Wheat Ridge CO 80033

Martin C Eckert III  
Project Number: [none]  
Project: Noble - Cody #D #3-7

## Extractable Petroleum Hydrocarbons by 8015D - Quality Control

### Origins Laboratory, Inc.

Analyte	Result	Reporting Limit	Units	Spike Level	Source Result	%REC	%REC Limits	RPD	RPD Limit	Notes
---------	--------	-----------------	-------	-------------	---------------	------	-------------	-----	-----------	-------

## Saturated Paste - Quality Control

### Origins Laboratory, Inc.

Analyte	Result	Reporting Limit	Units	Spike Level	Source Result	%REC	%REC Limits	RPD	RPD Limit	Notes
---------	--------	-----------------	-------	-------------	---------------	------	-------------	-----	-----------	-------

#### Batch B2E2502 - NO PREP

#### Blank (B2E2502-BLK1)

Prepared: 05/25/2022 Analyzed: 05/26/2022

Specific Conductance (EC) 0.00130 0.0300 mmhos/cm  
pH 0.00 pH Units

#### Duplicate (B2E2502-DUP1)

Source: Y205578-14

Prepared: 05/25/2022 Analyzed: 05/26/2022

pH 7.73 pH Units 7.72 0.129 25  
Specific Conductance (EC) 0.245 0.0300 mmhos/cm 0.244 0.491 25

Origins Laboratory, Inc.



The results in this report apply to the samples analyzed in accordance with the chain of custody document. This analytical report must be reproduced in its entirety.



Eagle Environmental Consulting, Inc.  
8000 W 44th Ave  
Wheat Ridge CO 80033

Martin C Eckert III  
Project Number: [none]  
Project: Noble - Cody #D #3-7

**PAH by 8270D SIM - Quality Control**  
**Waypoint Analytical, Inc.**

Analyte	Result	Reporting Limit	Units	Spike Level	Source Result	%REC	%REC Limits	RPD	RPD Limit	Notes
---------	--------	-----------------	-------	-------------	---------------	------	-------------	-----	-----------	-------

**Batch L618305 - 3550B**

MSD (L 96358-MSD-L618305)		Source: 96358			Prepared: 05/26/2022 Analyzed: 05/26/2022					
1-Methylnaphthalene	0.0867	0.000364	mg/Kg	0.167	<0.000364	51.9	30-130	1.5	30	
Benzo(a)anthracene	0.105	0.000493	"	0.167	<0.000493	62.8	30-130	2.8	30	
Anthracene	0.112	0.000334	"	0.167	<0.000334	67	30-130	1.8	30	
Acenaphthene	0.104	0.000304	"	0.167	<0.000304	62.2	30-130	1.9	30	
Chrysene	0.0968	0.000624	"	0.167	<0.000624	57.9	30-130	1.8	30	
2-Methylnaphthalene	0.0863	0.000645	"	0.167	<0.000645	51.6	30-130	0.6	30	
Pyrene	0.118	0.000643	"	0.167	<0.000643	70.6	30-130	1.6	30	
Benzo(b)fluoranthene	0.111	0.000585	"	0.167	<0.000585	66.4	30-130	4.6	30	
Naphthalene	0.0849	0.000484	"	0.167	<0.000484	50.8	30-130	0.5	30	
Indeno(1,2,3-cd)pyrene	0.167	0.000627	"	0.167	<0.000627	100	30-130	16.8	30	
Fluorene	0.1	0.000286	"	0.167	<0.000286	59.8	30-130	1.1	30	
Fluoranthene	0.121	0.000394	"	0.167	<0.000394	72.4	30-130	1.6	30	
Dibenz(a,h)anthracene	0.15	0.000614	"	0.167	<0.000614	89.8	30-130	12.7	30	
Benzo(k)fluoranthene	0.0974	0.000437	"	0.167	<0.000437	58.3	30-130	1.1	30	
Benzo(a)pyrene	0.105	0.000468	"	0.167	<0.000468	62.8	30-130	0.9	30	
Surrogate: 4-Terphenyl-d14	78.6		"	0.333	250	78.6	33-122			
Surrogate: 2-Fluorobiphenyl	51.9		"	0.333	183	51.9	33-115			
Surrogate: Nitrobenzene-d5	49.2		"	0.333	167	49.2	29-110			

MS (L 96358-MS-L618305)		Source: 96358			Prepared: 05/26/2022 Analyzed: 05/26/2022					
Benzo(b)fluoranthene	0.106	0.000585	mg/Kg	0.164	<0.000585	64.6	30-130			
Dibenz(a,h)anthracene	0.132	0.000614	"	0.164	<0.000614	80.4	30-130			
Pyrene	0.12	0.000643	"	0.164	<0.000643	73.1	30-130			
Naphthalene	0.0844	0.000484	"	0.164	<0.000484	51.4	30-130			
Indeno(1,2,3-cd)pyrene	0.141	0.000627	"	0.164	<0.000627	85.9	30-130			
Fluorene	0.0989	0.000286	"	0.164	<0.000286	60.3	30-130			
Fluoranthene	0.123	0.000394	"	0.164	<0.000394	75	30-130			

Origins Laboratory, Inc.



The results in this report apply to the samples analyzed in accordance with the chain of custody document. This analytical report must be reproduced in its entirety.

Eagle Environmental Consulting, Inc.  
8000 W 44th Ave  
Wheat Ridge CO 80033

Martin C Eckert III  
Project Number: [none]  
Project: Noble - Cody #D #3-7

**PAH by 8270D SIM - Quality Control**  
**Waypoint Analytical, Inc.**

Analyte	Result	Reporting Limit	Units	Spike Level	Source Result	%REC	%REC Limits	RPD	RPD Limit	Notes
---------	--------	-----------------	-------	-------------	---------------	------	-------------	-----	-----------	-------

**Batch L618305 - 3550B**

MS (L 96358-MS-L618305)		Source: 96358			Prepared: 05/26/2022 Analyzed: 05/26/2022					
2-Methylnaphthalene	0.0857	0.000645	mg/Kg	0.164	<0.000645	52.2	30-130			
Benzo(a)pyrene	0.104	0.000468	"	0.164	<0.000468	63.4	30-130			
Benzo(a)anthracene	0.108	0.000493	"	0.164	<0.000493	65.8	30-130			
Anthracene	0.11	0.000334	"	0.164	<0.000334	67	30-130			
Acenaphthene	0.102	0.000304	"	0.164	<0.000304	62.1	30-130			
Benzo(k)fluoranthene	0.0985	0.000437	"	0.164	<0.000437	60	30-130			
1-Methylnaphthalene	0.0854	0.000364	"	0.164	<0.000364	52	30-130			
Chrysene	0.0986	0.000624	"	0.164	<0.000624	60.1	30-130			
Surrogate: Nitrobenzene-d5	49.2		"	0.329	167	49.2	29-110			
Surrogate: 4-Terphenyl-d14	80.2		"	0.329	250	80.2	33-122			
Surrogate: 2-Fluorobiphenyl	52.5		"	0.329	183	52.5	33-115			

LCS (LCS-L618305)		Prepared: 05/26/2022 Analyzed: 05/26/2022								
Dibenz(a,h)anthracene	0.116	0.000614	mg/Kg	0.167		69.4	30-130			
Fluoranthene	0.115	0.000394	"	0.167		68.8	30-130			
Fluorene	0.0974	0.000286	"	0.167		58.3	30-130			
Indeno(1,2,3-cd)pyrene	0.127	0.000627	"	0.167		76	30-130			
Naphthalene	0.083	0.000484	"	0.167		49.7	30-130			
Pyrene	0.11	0.000643	"	0.167		65.8	30-130			
Acenaphthene	0.101	0.000304	"	0.167		60.4	30-130			
Chrysene	0.0904	0.000624	"	0.167		54.1	30-130			
Benzo(b)fluoranthene	0.102	0.000585	"	0.167		61	30-130			
Benzo(a)pyrene	0.0974	0.000468	"	0.167		58.3	30-130			
Anthracene	0.108	0.000334	"	0.167		64.6	30-130			
2-Methylnaphthalene	0.0855	0.000645	"	0.167		51.1	30-130			
1-Methylnaphthalene	0.0847	0.000364	"	0.167		50.7	30-130			
Benzo(a)anthracene	0.1	0.000493	"	0.167		59.8	30-130			

Origins Laboratory, Inc.



The results in this report apply to the samples analyzed in accordance with the chain of custody document. This analytical report must be reproduced in its entirety.

Eagle Environmental Consulting, Inc.  
8000 W 44th Ave  
Wheat Ridge CO 80033

Martin C Eckert III  
Project Number: [none]  
Project: Noble - Cody #D #3-7

**PAH by 8270D SIM - Quality Control**  
**Waypoint Analytical, Inc.**

Analyte	Result	Reporting Limit	Units	Spike Level	Source Result	%REC	%REC Limits	RPD	RPD Limit	Notes
---------	--------	-----------------	-------	-------------	---------------	------	-------------	-----	-----------	-------

**Batch L618305 - 3550B**

**LCS (LCS-L618305)**

Prepared: 05/26/2022 Analyzed: 05/26/2022

Benzo(k)fluoranthene	0.0858	0.000437	mg/Kg	0.167		51.3	30-130			
Surrogate: Nitrobenzene-d5	52.5		"	0.333		52.5	29-110			
Surrogate: 4-Terphenyl-d14	79.2		"	0.333		79.2	33-122			
Surrogate: 2-Fluorobiphenyl	60.6		"	0.333		60.6	33-115			

**LRB (LRB-L618305)**

Prepared: 05/26/2022 Analyzed: 05/26/2022

Pyrene	ND	0.00067	mg/Kg				-			
Dibenz(a,h)anthracene	ND	0.00067	"				-			
Fluoranthene	ND	0.00067	"				-			
Fluorene	ND	0.00067	"				-			
Indeno(1,2,3-cd)pyrene	ND	0.00067	"				-			
Chrysene	ND	0.00067	"				-			
Acenaphthene	ND	0.00067	"				-			
Naphthalene	ND	0.00067	"				-			
Benzo(k)fluoranthene	ND	0.00067	"				-			
Benzo(b)fluoranthene	ND	0.00067	"				-			
Benzo(a)pyrene	ND	0.00067	"				-			
Anthracene	ND	0.00067	"				-			
2-Methylnaphthalene	ND	0.00067	"				-			
1-Methylnaphthalene	ND	0.00067	"				-			
Benzo(a)anthracene	ND	0.00067	"				-			
Surrogate: Nitrobenzene-d5	48.6		"	0.333		48.6	29-110			
Surrogate: 4-Terphenyl-d14	77.1		"	0.333		77.1	33-122			
Surrogate: 2-Fluorobiphenyl	56.4		"	0.333		56.4	33-115			

Origins Laboratory, Inc.



The results in this report apply to the samples analyzed in accordance with the chain of custody document. This analytical report must be reproduced in its entirety.

Eagle Environmental Consulting, Inc.

8000 W 44th Ave

Wheat Ridge CO 80033

Martin C Eckert III

Project Number: [none]

Project: Noble - Cody #D #3-7

### Notes and Definitions

U Sample is Non-Detect.

ND Analyte NOT DETECTED at or above the reporting limit

RPD Relative Percent Difference

All soil results are reported on a wet weight basis.

Origins Laboratory, Inc.



*The results in this report apply to the samples analyzed in accordance with the chain of custody document. This analytical report must be reproduced in its entirety.*





June 14, 2022

Eagle Environmental Consulting, Inc.

Martin C Eckert III

8000 W 44th Ave

Wheat Ridge CO 80033

Project Name - Noble - Cody #D #3-7

Project Number - [none]

Attached are your analytical results for Noble - Cody #D #3-7 received by Origins Laboratory, Inc. May 24, 2022. This project is associated with Origins project number Y205620-01.

The analytical results in the following report were analyzed under the guidelines of EPA Methods. These methods are identified as follows; "SW" are defined in SW-846, "EPA" are defined in 40CFR part 136 and "SM" are defined in the most current revision of Standard Methods For the Examination of Water and Wastewater.

The analytical results apply specifically to the samples and analyses specified per the attached Chain of Custody. As such, this report shall not be reproduced except in full, without the written approval of Origin's laboratory.

Unless otherwise noted, the analytical results for all soil samples are reported on a wet weight basis. All analytical analyses were performed under NELAP guidelines unless noted by a data qualifier.

Any holding time exceedances, deviations from the method specifications or deviations from Origins Laboratory's Standard Operating Procedures are outlined in the case narrative.

Thank you for selecting Origins for your analytical needs. Please contact us with any questions concerning this report, or if we can help with anything at all.

Origins Laboratory, Inc.  
303.433.1322  
o-squad@oelabinc.com



1725 Elk Place, Denver, CO 80211 | Phone: 303.433.1322 | Fax: 303.265.9645

Eagle Environmental Consulting, Inc.

8000 W 44th Ave

Wheat Ridge CO 80033

Martin C Eckert III

Project Number: [none]

Project: Noble - Cody #D #3-7

## CROSS REFERENCE REPORT

Sample ID	Laboratory ID	Matrix	Date Sampled	Date Received
FL-SS-12@3'	Y205620-01	Soil	May 24, 2022 10:22	05/24/2022 15:55

### Chain of Custody Modification Request

On 6/3/2022, Grace Congdon from Eagle Environmental contacted Jordan Bynon via email regarding Y205620 requesting that Table 915 Metals be added to FL-SS-12@3'.

Requested modifications to the chain of custody were made by Jordan Bynon on 6/3/2022.

Origins Laboratory, Inc.



*The results in this report apply to the samples analyzed in accordance with the chain of custody document. This analytical report must be reproduced in its entirety.*



Eagle Environmental Consulting, Inc.  
8000 W 44th Ave  
Wheat Ridge CO 80033

Martin C Eckert III  
Project Number: [none]  
Project: Noble - Cody #D #3-7

Origins Laboratory

## Sample Receipt Checklist

F-012207-01-R1  
Effective Date: 01/09/12

Origins Work Order: Y205620

Client: Eagle

Client Project ID: Cody D 3-7

Checklist Completed by: SG

Shipped Via: HD

(UPS, FedEx, Hand Delivered, Pick-up, etc.)

Date/time completed: 5/25/22

Airbill #: N/A

Matrix(s) Received: (Check all that apply): ☒ Soil/Solid

☐ Water

☐ Other:

(Describe)

Cooler Number/Temperature: 1, 1.7 °C

1 °C 1 °C 1 °C

Thermometer ID: T004

Requirement Description	Yes	No	N/A	Comments (if any)
If samples require cooling, was the temperature between 0°C to ≤ 6°C <sup>(1)</sup> ?	<input checked="" type="checkbox"/>	<input type="checkbox"/>	<input type="checkbox"/>	
Is there ice present (document if blue ice is used)	<input checked="" type="checkbox"/>	<input type="checkbox"/>	<input type="checkbox"/>	
Are custody seals present on cooler? (if so, document in comments if they are signed and dated, broken or intact)	<input type="checkbox"/>	<input checked="" type="checkbox"/>	<input type="checkbox"/>	
Are custody seals present on each sample container? (if so, document in comments if they are signed and dated, broken or intact)	<input type="checkbox"/>	<input checked="" type="checkbox"/>	<input type="checkbox"/>	
Were all samples received intact <sup>(1)</sup> ?	<input checked="" type="checkbox"/>	<input type="checkbox"/>	<input type="checkbox"/>	
Was adequate sample volume provided <sup>(1)</sup> ?	<input checked="" type="checkbox"/>	<input type="checkbox"/>	<input type="checkbox"/>	
Are short holding time analytes or samples with HTs due within 48 hours present <sup>(1)</sup> ?	<input type="checkbox"/>	<input checked="" type="checkbox"/>	<input type="checkbox"/>	
Is a chain-of-custody (COC) present and filled out completely <sup>(1)</sup> ?	<input checked="" type="checkbox"/>	<input type="checkbox"/>	<input type="checkbox"/>	
Does the COC agree with the number and type of sample bottles received <sup>(1)</sup> ?	<input checked="" type="checkbox"/>	<input type="checkbox"/>	<input type="checkbox"/>	
Do the sample IDs on the bottle labels match the COC <sup>(1)</sup> ?	<input checked="" type="checkbox"/>	<input type="checkbox"/>	<input type="checkbox"/>	
Is the COC properly relinquished by the client with date and time recorded <sup>(1)</sup> ?	<input checked="" type="checkbox"/>	<input type="checkbox"/>	<input type="checkbox"/>	
For volatiles in water – is there headspace (> ¼ inch bubble) present? If yes, contact client and note in narrative.	<input type="checkbox"/>	<input type="checkbox"/>	<input checked="" type="checkbox"/>	
Are samples preserved that require preservation and was it checked <sup>(1)</sup> ? (note ID of confirmation instrument used in comments) / (preservation is not confirmed for subcontracted analyses in order to insure sample integrity) / (pH < 2 for samples preserved with HNO <sub>3</sub> , HCL, H <sub>2</sub> SO <sub>4</sub> ) / (pH > 10 for samples preserved with Na <sub>2</sub> SO <sub>2</sub> +NaOH, ZnAc+NaOH)	<input type="checkbox"/>	<input type="checkbox"/>	<input checked="" type="checkbox"/>	
Additional Comments (if any):				

<sup>(1)</sup>If NO, then contact the client before proceeding with analysis and note date/time and person contacted as well as the corrective action to in the additional comments (above) and the case narrative.

Reviewed by (Project Manager) JB

Date/Time Reviewed 5-26-22

Origins Laboratory, Inc.

*J. Bynon*

The results in this report apply to the samples analyzed in accordance with the chain of custody document. This analytical report must be reproduced in its entirety.



Eagle Environmental Consulting, Inc.  
8000 W 44th Ave  
Wheat Ridge CO 80033

Martin C Eckert III  
Project Number: [none]  
Project: Noble - Cody #D #3-7

FL-SS-12@3'

5/24/2022 10:22:00AM

Analyte	Result	Min Detection Limit	Reporting Limit	Units	Dilution	Batch	Prepared	Analyzed	Notes
---------	--------	---------------------	-----------------	-------	----------	-------	----------	----------	-------

**Origins Laboratory, Inc.**  
**Y205620-01 (Soil)**

**Boron (DTPA Sorbitol)**

Boron	1.18	0.100	mg/L	1	B2E2517	05/25/2022	05/26/2022
-------	------	-------	------	---	---------	------------	------------

**DRO/ORO by EPA 8015D**

Diesel (C10-C28)	184	25.0	mg/kg	1	B2E2507	05/25/2022	05/26/2022
Residual Range Organics (C28-C40)	ND	100	"	"	"	"	" U

Surrogate: o-Terphenyl	91.8 %	50-150	"	"	"
------------------------	--------	--------	---	---	---

**GBTEX+TMBs by 8260D**

1,2,4-Trimethylbenzene	0.324	0.00200	mg/kg	1	B2E2511	05/25/2022	05/26/2022
1,3,5-Trimethylbenzene	0.164	0.00200	"	"	"	"	"
Benzene	0.216	0.00200	"	"	"	"	"
Ethylbenzene	0.140	0.00200	"	"	"	"	"
Toluene	0.590	0.0500	"	25	"	"	05/26/2022
Xylenes, total	3.58	0.00200	"	1	"	"	05/26/2022
Gasoline Range Hydrocarbons	26.5	5.00	"	25	"	"	05/26/2022

Surrogate: 1,2-Dichloroethane-d4	107 %	70-130	"	"	05/26/2022
Surrogate: Toluene-d8	102 %	70-130	"	"	"
Surrogate: 4-Bromofluorobenzene	104 %	70-130	"	"	"

Origins Laboratory, Inc.



The results in this report apply to the samples analyzed in accordance with the chain of custody document. This analytical report must be reproduced in its entirety.

Eagle Environmental Consulting, Inc.  
8000 W 44th Ave  
Wheat Ridge CO 80033

Martin C Eckert III  
Project Number: [none]  
Project: Noble - Cody #D #3-7

FL-SS-12@3'

5/24/2022 10:22:00AM

Analyte	Result	Min Detection Limit	Reporting Limit	Units	Dilution	Batch	Prepared	Analyzed	Notes
---------	--------	---------------------	-----------------	-------	----------	-------	----------	----------	-------

Origins Laboratory, Inc.  
Y205620-01 (Soil)

## Metals by Saturated Paste by EPA 6010

Calcium	4.29	0.499	meq/L	10	[CALC]	05/25/2022	05/26/2022
Magnesium	3.96	0.823	"	"	"	"	"
Sodium	6.24	0.435	"	"	"	"	"

## PAH by 8270D SIM

1-Methylnaphthalene	0.693	0.00364	0.0067	mg/Kg	10	L618759	05/31/2022	05/31/2022
2-Methylnaphthalene	1.47	0.00645	0.0067	"	"	"	"	"
Acenaphthene	0.0783	0.000304	0.00067	"	1	"	"	"
Anthracene	0.00152	0.000334	0.00067	"	"	"	"	"
Benzo(a)anthracene	0.0146	0.000493	0.00067	"	"	"	"	"
Benzo(a)pyrene	ND	0.000468	0.00067	"	"	"	"	"
Benzo(b)fluoranthene	ND	0.000585	0.00067	"	"	"	"	"
Benzo(k)fluoranthene	0.000712	0.000437	0.00067	"	"	"	"	"
Chrysene	0.0151	0.000624	0.00067	"	"	"	"	"
Dibenz(a,h)anthracene	ND	0.000614	0.00067	"	"	"	"	"
Fluoranthene	0.000863	0.000394	0.00067	"	"	"	"	"
Fluorene	0.111	0.000286	0.00067	"	"	"	"	"
Indeno(1,2,3-cd)pyrene	ND	0.000627	0.00067	"	"	"	"	"
Naphthalene	0.309	0.000484	0.00067	"	"	"	"	"
Pyrene	0.0106	0.000643	0.00067	"	"	"	"	"
Surrogate: 2-Fluorobiphenyl	56.6 %		33-115			"	"	"
Surrogate: 4-Terphenyl-d14	104 %		33-122			"	"	"

Origins Laboratory, Inc.



The results in this report apply to the samples analyzed in accordance with the chain of custody document. This analytical report must be reproduced in its entirety.

Eagle Environmental Consulting, Inc.  
8000 W 44th Ave  
Wheat Ridge CO 80033

Martin C Eckert III  
Project Number: [none]  
Project: Noble - Cody #D #3-7

FL-SS-12@3'

5/24/2022 10:22:00AM

Analyte	Result	Min Detection Limit	Reporting Limit	Units	Dilution	Batch	Prepared	Analyzed	Notes
---------	--------	---------------------	-----------------	-------	----------	-------	----------	----------	-------

**Waypoint Analytical, Inc.**  
Y205620-01 (Soil)

**PAH by 8270D SIM**

Surrogate: Nitrobenzene-d5	54.1 %	29-110	L6187 59	05/31/2022	05/31/2022
----------------------------	--------	--------	-------------	------------	------------

**pH in Soil by 9045D**

pH	8.31	pH Units	1	B2E2518	05/25/2022	05/26/2022
----	------	----------	---	---------	------------	------------

**SAR by 20B Saturated Paste**

SAR	3.07	SAR	1	B2E2516	05/25/2022	05/26/2022
-----	------	-----	---	---------	------------	------------

**Specific Conductance Mod. 9050A**

Specific Conductance (EC)	1.76	0.00500	mmhos/cm	1	B2E2518	05/25/2022	05/26/2022
---------------------------	------	---------	----------	---	---------	------------	------------

**Total Metals by 6020B**

Arsenic	2.01	0.0855	0.25	mg/Kg	5	L620930	06/10/2022	06/13/2022
Barium	123	0.042	0.25	"	"	"	"	"
Cadmium	0.222	0.0259	0.25	"	"	"	"	" J
Copper	14.2	0.0806	0.25	"	"	"	"	"
Lead	15.7	0.031	0.25	"	"	"	"	"
Nickel	10.9	0.0633	0.25	"	"	"	"	"
Selenium	0.304	0.103	0.25	"	"	"	"	"
Silver	0.0442	0.0067	0.25	"	"	"	"	" J
Zinc	57.4	0.534	2.5	"	"	"	"	"

Origins Laboratory, Inc.



The results in this report apply to the samples analyzed in accordance with the chain of custody document. This analytical report must be reproduced in its entirety.

Eagle Environmental Consulting, Inc.  
8000 W 44th Ave  
Wheat Ridge CO 80033

Martin C Eckert III  
Project Number: [none]  
Project: Noble - Cody #D #3-7

FL-SS-12@3'

5/24/2022 10:22:00AM

Analyte	Result	Min Detection Limit	Reporting Limit	Units	Dilution	Batch	Prepared	Analyzed	Notes
---------	--------	------------------------	--------------------	-------	----------	-------	----------	----------	-------

Waypoint Analytical, LLC.  
Y205620-01 (Soil)

## Total Metals by 7196A

Chromium, Hexavalent	ND	0.244	0.5	mg/Kg	1	L620960	05/24/2022	06/10/2022
----------------------	----	-------	-----	-------	---	---------	------------	------------

Origins Laboratory, Inc.



The results in this report apply to the samples analyzed in accordance with the chain of custody document. This analytical report must be reproduced in its entirety.



Eagle Environmental Consulting, Inc.  
8000 W 44th Ave  
Wheat Ridge CO 80033

Martin C Eckert III  
Project Number: [none]  
Project: Noble - Cody #D #3-7

## Extractable Petroleum Hydrocarbons by 8015D - Quality Control Origins Laboratory, Inc.

Analyte	Result	Reporting Limit	Units	Spike Level	Source Result	%REC	%REC Limits	RPD	RPD Limit	Notes
<b>Batch B2E2507 - EPA 3550B</b>										
<b>Blank (B2E2507-BLK1)</b>					Prepared: 05/25/2022 Analyzed: 05/26/2022					
Diesel (C10-C28)	ND	25.0	mg/kg							U
Residual Range Organics (C28-C40)	ND	100	"							U
Surrogate: o-Terphenyl	23		"	24.9		92.6	50-150			

Origins Laboratory, Inc.



*The results in this report apply to the samples analyzed in accordance with the chain of custody document. This analytical report must be reproduced in its entirety.*

Eagle Environmental Consulting, Inc.  
8000 W 44th Ave  
Wheat Ridge CO 80033

Martin C Eckert III  
Project Number: [none]  
Project: Noble - Cody #D #3-7

**Extractable Petroleum Hydrocarbons by 8015D - Quality Control**  
**Origins Laboratory, Inc.**

Analyte	Result	Reporting Limit	Units	Spike Level	Source Result	%REC	%REC Limits	RPD	RPD Limit	Notes
---------	--------	-----------------	-------	-------------	---------------	------	-------------	-----	-----------	-------

Batch B2E2507 - EPA 3550B

**LCS (B2E2507-BS1)**

Prepared: 05/25/2022 Analyzed: 05/26/2022

Diesel (C10-C28)	1150	50.0	mg/kg	1000		115	70-130			
Residual Range Organics (C28-C40)	1100	200	"	1000		110	70-130			
Surrogate: o-Terphenyl	54		"	49.8		108	50-150			

Origins Laboratory, Inc.



*The results in this report apply to the samples analyzed in accordance with the chain of custody document. This analytical report must be reproduced in its entirety.*

Eagle Environmental Consulting, Inc.  
8000 W 44th Ave  
Wheat Ridge CO 80033

Martin C Eckert III  
Project Number: [none]  
Project: Noble - Cody #D #3-7

**Extractable Petroleum Hydrocarbons by 8015D - Quality Control**  
**Origins Laboratory, Inc.**

Analyte	Result	Reporting Limit	Units	Spike Level	Source Result	%REC	%REC Limits	RPD	RPD Limit	Notes
---------	--------	-----------------	-------	-------------	---------------	------	-------------	-----	-----------	-------

**Batch B2E2507 - EPA 3550B**

Matrix Spike (B2E2507-MS1)		Source: Y205601-01			Prepared: 05/25/2022 Analyzed: 05/26/2022					
Diesel (C10-C28)	1060	50.0	mg/kg	1000	ND	106	70-130			
Residual Range Organics (C28-C40)	1090	200	"	1000	ND	109	70-130			
Surrogate: o-Terphenyl	59		"	49.8		118	50-150			

Origins Laboratory, Inc.



*The results in this report apply to the samples analyzed in accordance with the chain of custody document. This analytical report must be reproduced in its entirety.*

Eagle Environmental Consulting, Inc.  
8000 W 44th Ave  
Wheat Ridge CO 80033

Martin C Eckert III  
Project Number: [none]  
Project: Noble - Cody #D #3-7

## Extractable Petroleum Hydrocarbons by 8015D - Quality Control

### Origins Laboratory, Inc.

Analyte	Result	Reporting Limit	Units	Spike Level	Source Result	%REC	%REC Limits	RPD	RPD Limit	Notes
---------	--------	-----------------	-------	-------------	---------------	------	-------------	-----	-----------	-------

#### Batch B2E2507 - EPA 3550B

Matrix Spike Dup (B2E2507-MSD1)		Source: Y205601-01			Prepared: 05/25/2022 Analyzed: 05/26/2022					
Diesel (C10-C28)	1160	50.0	mg/kg	1000	ND	116	70-130	9.35	35	
Residual Range Organics (C28-C40)	1020	200	"	1000	ND	102	70-130	6.05	35	
Surrogate: o-Terphenyl	56		"	49.8		113	50-150			

Origins Laboratory, Inc.



*The results in this report apply to the samples analyzed in accordance with the chain of custody document. This analytical report must be reproduced in its entirety.*



Eagle Environmental Consulting, Inc.  
8000 W 44th Ave  
Wheat Ridge CO 80033

Martin C Eckert III  
Project Number: [none]  
Project: Noble - Cody #D #3-7

## Extractable Petroleum Hydrocarbons by 8015D - Quality Control

### Origins Laboratory, Inc.

Analyte	Result	Reporting Limit	Units	Spike Level	Source Result	%REC	%REC Limits	RPD	RPD Limit	Notes
<b>Batch B2E2511 - EPA 5030 (soil)</b>										
<b>Blank (B2E2511-BLK1)</b>					Prepared: 05/25/2022 Analyzed: 05/25/2022					
1,2,4-Trimethylbenzene	ND	0.00200	mg/kg							U
1,3,5-Trimethylbenzene	ND	0.00200	"							U
Benzene	ND	0.00200	"							U
Ethylbenzene	ND	0.00200	"							U
Naphthalene	ND	0.0100	"							U
Toluene	ND	0.00200	"							U
Xylenes, total	ND	0.00200	"							U
Gasoline Range Hydrocarbons	ND	0.200	"							U
Surrogate: 1,2-Dichloroethane-d4	0.12		"	0.125		99.9	70-130			
Surrogate: Toluene-d8	0.13		"	0.125		101	70-130			
Surrogate: 4-Bromofluorobenzene	0.12		"	0.125		95.4	70-130			

Origins Laboratory, Inc.



The results in this report apply to the samples analyzed in accordance with the chain of custody document. This analytical report must be reproduced in its entirety.

Eagle Environmental Consulting, Inc.  
8000 W 44th Ave  
Wheat Ridge CO 80033

Martin C Eckert III  
Project Number: [none]  
Project: Noble - Cody #D #3-7

**Volatile Organic Compounds by GC/MS SW846 8260D - Quality Control**  
**Origins Laboratory, Inc.**

Analyte	Result	Reporting Limit	Units	Spike Level	Source Result	%REC	%REC Limits	RPD	RPD Limit	Notes
---------	--------	-----------------	-------	-------------	---------------	------	-------------	-----	-----------	-------

**Batch B2E2511 - EPA 5030 (soil)**

**LCS (B2E2511-BS1)**

Prepared: 05/25/2022 Analyzed: 05/25/2022

1,2,4-Trimethylbenzene	0.106	0.00200	mg/kg	0.100		106	70-130			
1,3,5-Trimethylbenzene	0.106	0.00200	"	0.100		106	70-130			
Benzene	0.0969	0.00200	"	0.100		96.9	70-130			
Ethylbenzene	0.106	0.00200	"	0.100		106	70-130			
Naphthalene	0.110	0.0100	"	0.100		110	70-130			
Toluene	0.101	0.00200	"	0.100		101	70-130			
o-Xylene	0.105	0.00200	"	0.100		105	70-130			
m,p-Xylene	0.218	0.00400	"	0.200		109	70-130			
Surrogate: 1,2-Dichloroethane-d4	0.12		"	0.125		94.0	70-130			
Surrogate: Toluene-d8	0.12		"	0.125		96.6	70-130			
Surrogate: 4-Bromofluorobenzene	0.13		"	0.125		105	70-130			

Origins Laboratory, Inc.



The results in this report apply to the samples analyzed in accordance with the chain of custody document. This analytical report must be reproduced in its entirety.

Eagle Environmental Consulting, Inc.  
8000 W 44th Ave  
Wheat Ridge CO 80033

Martin C Eckert III  
Project Number: [none]  
Project: Noble - Cody #D #3-7

**Volatile Organic Compounds by GC/MS SW846 8260D - Quality Control**  
**Origins Laboratory, Inc.**

Analyte	Result	Reporting Limit	Units	Spike Level	Source Result	%REC	%REC Limits	RPD	RPD Limit	Notes
---------	--------	-----------------	-------	-------------	---------------	------	-------------	-----	-----------	-------

**Batch B2E2511 - EPA 5030 (soil)**

Matrix Spike (B2E2511-MS1)		Source: Y205601-01			Prepared: 05/25/2022 Analyzed: 05/25/2022					
1,2,4-Trimethylbenzene	0.0769	0.00200	mg/kg	0.100	ND	76.9	70-130			
1,3,5-Trimethylbenzene	0.0759	0.00200	"	0.100	ND	75.9	70-130			
Benzene	0.0812	0.00200	"	0.100	ND	81.2	70-130			
Ethylbenzene	0.0853	0.00200	"	0.100	ND	85.3	70-130			
Naphthalene	0.0826	0.0100	"	0.100	ND	82.6	70-130			
Toluene	0.0807	0.00200	"	0.100	ND	80.7	70-130			
o-Xylene	0.0841	0.00200	"	0.100	ND	84.1	70-130			
m,p-Xylene	0.167	0.00400	"	0.200	ND	83.6	70-130			
Surrogate: 1,2-Dichloroethane-d4	0.13		"	0.125		104	70-130			
Surrogate: Toluene-d8	0.12		"	0.125		93.9	70-130			
Surrogate: 4-Bromofluorobenzene	0.14		"	0.125		109	70-130			

Origins Laboratory, Inc.



The results in this report apply to the samples analyzed in accordance with the chain of custody document. This analytical report must be reproduced in its entirety.

Eagle Environmental Consulting, Inc.  
8000 W 44th Ave  
Wheat Ridge CO 80033

Martin C Eckert III  
Project Number: [none]  
Project: Noble - Cody #D #3-7

**Volatile Organic Compounds by GC/MS SW846 8260D - Quality Control**  
**Origins Laboratory, Inc.**

Analyte	Result	Reporting Limit	Units	Spike Level	Source Result	%REC	%REC Limits	RPD	RPD Limit	Notes
<b>Batch B2E2511 - EPA 5030 (soil)</b>										
<b>Matrix Spike Dup (B2E2511-MSD1)</b>		<b>Source: Y205601-01</b>			Prepared: 05/25/2022 Analyzed: 05/25/2022					
1,2,4-Trimethylbenzene	0.0597	0.00200	mg/kg	0.100	ND	59.7	70-130	25.2	20	QM-07
1,3,5-Trimethylbenzene	0.0576	0.00200	"	0.100	ND	57.6	70-130	27.4	20	QM-07
Benzene	0.0815	0.00200	"	0.100	ND	81.5	70-130	0.418	20	
Ethylbenzene	0.0753	0.00200	"	0.100	ND	75.3	70-130	12.4	20	
Naphthalene	0.0634	0.0100	"	0.100	ND	63.4	70-130	26.3	20	QM-07
Toluene	0.0802	0.00200	"	0.100	ND	80.2	70-130	0.696	20	
o-Xylene	0.0741	0.00200	"	0.100	ND	74.1	70-130	12.7	20	
m,p-Xylene	0.147	0.00400	"	0.200	ND	73.5	70-130	12.9	20	
Surrogate: 1,2-Dichloroethane-d4	0.13		"	0.125		102	70-130			
Surrogate: Toluene-d8	0.12		"	0.125		94.3	70-130			
Surrogate: 4-Bromofluorobenzene	0.13		"	0.125		104	70-130			

Origins Laboratory, Inc.



The results in this report apply to the samples analyzed in accordance with the chain of custody document. This analytical report must be reproduced in its entirety.



Eagle Environmental Consulting, Inc.  
8000 W 44th Ave  
Wheat Ridge CO 80033

Martin C Eckert III  
Project Number: [none]  
Project: Noble - Cody #D #3-7

**Volatile Organic Compounds by GC/MS SW846 8260D - Quality Control**  
**Origins Laboratory, Inc.**

Analyte	Result	Reporting Limit	Units	Spike Level	Source Result	%REC	%REC Limits	RPD	RPD Limit	Notes
---------	--------	-----------------	-------	-------------	---------------	------	-------------	-----	-----------	-------

**Saturated Paste - Quality Control**  
**Origins Laboratory, Inc.**

Analyte	Result	Reporting Limit	Units	Spike Level	Source Result	%REC	%REC Limits	RPD	RPD Limit	Notes
---------	--------	-----------------	-------	-------------	---------------	------	-------------	-----	-----------	-------

**Batch B2E2518 - NO PREP**

**Blank (B2E2518-BLK1)**

Prepared: 05/25/2022 Analyzed: 05/26/2022

Specific Conductance (EC)	0.00100	0.00500	mmhos/cm
pH	0.00		pH Units

**Duplicate (B2E2518-DUP1)**

**Source: Y205617-20**

Prepared: 05/25/2022 Analyzed: 05/26/2022

Specific Conductance (EC)	0.688	0.00500	mmhos/cm	0.625	9.51	25
pH	8.27		pH Units	8.28	0.121	25

Origins Laboratory, Inc.



*The results in this report apply to the samples analyzed in accordance with the chain of custody document. This analytical report must be reproduced in its entirety.*

Eagle Environmental Consulting, Inc.  
8000 W 44th Ave  
Wheat Ridge CO 80033

Martin C Eckert III  
Project Number: [none]  
Project: Noble - Cody #D #3-7

## Total Metals by 6020B - Quality Control Waypoint Analytical, LLC.

Analyte	Result	Reporting Limit	Units	Spike Level	Source Result	%REC	%REC Limits	RPD	RPD Limit	Notes
<b>Batch L620930 - 3050B</b>										
<b>MSD (L 91004-MSD-L620930)</b>			<b>Source: 91004</b>		Prepared: 06/10/2022 Analyzed: 06/13/2022					
Nickel	5.99	0.0633	mg/Kg	2.43	2.83	130	75-125	3.2	80	*
Zinc	50.4	0.534	"	24.3	58.4	NR	75-125	10.4	80	*
Cadmium	0.561	0.0259	"	0.487	0.0541	104	75-125	7.9	80	
Lead	5.34	0.031	"	2.43	3.5	76	75-125	7.3	80	
Copper	6.55	0.0806	"	2.43	3.75	115	75-125	3.2	80	
Arsenic	4.52	0.0855	"	2.43	1.1	140	75-125	24.8	80	*
Barium	111	0.042	"	4.87	145	NR	75-125	1.7	80	*
Silver	0.491	0.0067	"	0.487	0.00777	99	75-125	5.6	80	
Selenium	4.12	0.103	"	4.87	0.162	81	75-125	12.6	80	
<b>MS (L 91004-MS-L620930)</b>			<b>Source: 91004</b>		Prepared: 06/10/2022 Analyzed: 06/13/2022					
Zinc	45.4	0.534	mg/Kg	23.5	58.4	NR	75-125			*
Silver	0.464	0.0067	"	0.469	0.00777	97	75-125			
Selenium	3.63	0.103	"	4.69	0.162	74	75-125			*
Nickel	5.8	0.0633	"	2.35	2.83	127	75-125			*
Lead	5.75	0.031	"	2.35	3.5	96	75-125			
Copper	6.34	0.0806	"	2.35	3.75	110	75-125			
Cadmium	0.518	0.0259	"	0.469	0.0541	99	75-125			
Barium	113	0.042	"	4.69	145	NR	75-125			*
Arsenic	3.52	0.0855	"	2.35	1.1	103	75-125			
<b>LCS (LCS-L620930)</b>			Prepared: 06/10/2022 Analyzed: 06/13/2022							
Barium	4.96	0.042	mg/Kg	5		99	80-120			
Cadmium	0.5	0.0259	"	0.5		100	80-120			
Copper	2.38	0.0806	"	2.5		95	80-120			
Lead	2.45	0.031	"	2.5		98	80-120			
Nickel	2.45	0.0633	"	2.5		98	80-120			

Origins Laboratory, Inc.



The results in this report apply to the samples analyzed in accordance with the chain of custody document. This analytical report must be reproduced in its entirety.

Eagle Environmental Consulting, Inc.  
8000 W 44th Ave  
Wheat Ridge CO 80033

Martin C Eckert III  
Project Number: [none]  
Project: Noble - Cody #D #3-7

## Total Metals by 6020B - Quality Control Waypoint Analytical, LLC.

Analyte	Result	Reporting Limit	Units	Spike Level	Source Result	%REC	%REC Limits	RPD	RPD Limit	Notes
---------	--------	-----------------	-------	-------------	---------------	------	-------------	-----	-----------	-------

### Batch L620930 - 3050B

#### LCS (LCS-L620930)

Prepared: 06/10/2022 Analyzed: 06/13/2022

Silver	0.507	0.0067	mg/Kg	0.5		101	80-120			
Zinc	23.5	0.534	"	25		94	80-120			
Arsenic	2.45	0.0855	"	2.5		98	80-120			
Selenium	5.17	0.103	"	5		103	80-120			

#### LRB (LRB-L620930)

Prepared: 06/10/2022 Analyzed: 06/13/2022

Selenium	ND	0.25	mg/Kg				-			
Zinc	ND	2.5	"				-			
Silver	ND	0.25	"				-			
Nickel	ND	0.25	"				-			
Lead	ND	0.25	"				-			
Arsenic	ND	0.25	"				-			
Cadmium	ND	0.25	"				-			
Barium	ND	0.25	"				-			
Copper	ND	0.25	"				-			

Origins Laboratory, Inc.



The results in this report apply to the samples analyzed in accordance with the chain of custody document. This analytical report must be reproduced in its entirety.

Eagle Environmental Consulting, Inc.  
8000 W 44th Ave  
Wheat Ridge CO 80033

Martin C Eckert III  
Project Number: [none]  
Project: Noble - Cody #D #3-7

## Total Metals by 7196A - Quality Control Waypoint Analytical, LLC.

Analyte	Result	Reporting Limit	Units	Spike Level	Source Result	%REC	%REC Limits	RPD	RPD Limit	Notes
<b>Batch L620960 -</b>										
<b>DUP (L 92431-DUP)</b>		<b>Source: 92431</b>			Prepared: Analyzed: 06/10/2022					
Chromium, Hexavalent	ND	0.251	mg/Kg		92431	-		0	20	
<b>MS (L 92431-MS)</b>		<b>Source: 92431</b>			Prepared: Analyzed: 06/10/2022					
Chromium, Hexavalent	6.3	0.247	mg/Kg	8.12	92431	78	75-125			
<b>LCS (LCS)</b>					Prepared: Analyzed: 06/10/2022					
Chromium, Hexavalent	7.61	0.244	mg/Kg	8		95	75-125			
<b>LRB (LRB)</b>					Prepared: Analyzed: 06/10/2022					
Chromium, Hexavalent	ND	0.5	mg/Kg							

Origins Laboratory, Inc.



The results in this report apply to the samples analyzed in accordance with the chain of custody document. This analytical report must be reproduced in its entirety.



Eagle Environmental Consulting, Inc.  
8000 W 44th Ave  
Wheat Ridge CO 80033

Martin C Eckert III  
Project Number: [none]  
Project: Noble - Cody #D #3-7

**PAH by 8270D SIM - Quality Control**  
**Waypoint Analytical, Inc.**

Analyte	Result	Reporting Limit	Units	Spike Level	Source Result	%REC	%REC Limits	RPD	RPD Limit	Notes
---------	--------	-----------------	-------	-------------	---------------	------	-------------	-----	-----------	-------

**Batch L618759 - 3550B**

MSD (L 98233-MSD-L618759)		Source: 98233			Prepared: 05/31/2022 Analyzed: 05/31/2022					
Chrysene	0.112	0.000624	mg/Kg	0.163	<0.000624	68.7	30-130	4.3	30	
Anthracene	0.126	0.000334	"	0.163	<0.000334	77.3	30-130	5.4	30	
Naphthalene	0.092	0.000484	"	0.163	<0.000484	56.4	30-130	7.1	30	
Indeno(1,2,3-cd)pyrene	0.114	0.000627	"	0.163	<0.000627	69.9	30-130	34.7	30	
Fluorene	0.112	0.000286	"	0.163	<0.000286	68.7	30-130	6	30	
Fluoranthene	0.142	0.000394	"	0.163	<0.000394	87.1	30-130	0	30	
Dibenz(a,h)anthracene	0.107	0.000614	"	0.163	<0.000614	65.6	30-130	30.1	30	
Pyrene	0.143	0.000643	"	0.163	<0.000643	87.7	30-130	0.7	30	
2-Methylnaphthalene	0.0937	0.000645	"	0.163	<0.000645	57.4	30-130	9.4	30	
1-Methylnaphthalene	0.0943	0.000364	"	0.163	<0.000364	57.8	30-130	8.8	30	
Benzo(a)pyrene	0.119	0.000468	"	0.163	<0.000468	73	30-130	4.1	30	
Benzo(k)fluoranthene	0.104	0.000437	"	0.163	<0.000437	63.8	30-130	4.6	30	
Acenaphthene	0.113	0.000304	"	0.163	<0.000304	69.3	30-130	10	30	
Benzo(a)anthracene	0.116	0.000493	"	0.163	<0.000493	71.1	30-130	5.8	30	
Benzo(b)fluoranthene	0.102	0.000585	"	0.163	<0.000585	62.5	30-130	14.5	30	
Surrogate: Nitrobenzene-d5	55		"	0.327	202	55	29-110			
Surrogate: 2-Fluorobiphenyl	61.4		"	0.327	232	61.4	33-115			
Surrogate: 4-Terphenyl-d14	95.1		"	0.327	331	95.1	33-122			

MS (L 98233-MS-L618759)		Source: 98233			Prepared: 05/31/2022 Analyzed: 05/31/2022					
Chrysene	0.117	0.000624	mg/Kg	0.166	<0.000624	70.4	30-130			
Benzo(k)fluoranthene	0.109	0.000437	"	0.166	<0.000437	65.6	30-130			
Naphthalene	0.0988	0.000484	"	0.166	<0.000484	59.5	30-130			
Indeno(1,2,3-cd)pyrene	0.162	0.000627	"	0.166	<0.000627	97.5	30-130			
Fluorene	0.119	0.000286	"	0.166	<0.000286	71.6	30-130			
Dibenz(a,h)anthracene	0.145	0.000614	"	0.166	<0.000614	87.3	30-130			
Pyrene	0.142	0.000643	"	0.166	<0.000643	85.5	30-130			

Origins Laboratory, Inc.



The results in this report apply to the samples analyzed in accordance with the chain of custody document. This analytical report must be reproduced in its entirety.

Eagle Environmental Consulting, Inc.  
8000 W 44th Ave  
Wheat Ridge CO 80033

Martin C Eckert III  
Project Number: [none]  
Project: Noble - Cody #D #3-7

**PAH by 8270D SIM - Quality Control**  
**Waypoint Analytical, Inc.**

Analyte	Result	Reporting Limit	Units	Spike Level	Source Result	%REC	%REC Limits	RPD	RPD Limit	Notes
---------	--------	-----------------	-------	-------------	---------------	------	-------------	-----	-----------	-------

**Batch L618759 - 3550B**

MS (L 98233-MS-L618759)		Source: 98233			Prepared: 05/31/2022 Analyzed: 05/31/2022					
Benzo(b)fluoranthene	0.118	0.000585	mg/Kg	0.166	<0.000585	71	30-130			
Fluoranthene	0.142	0.000394	"	0.166	<0.000394	85.5	30-130			
1-Methylnaphthalene	0.103	0.000364	"	0.166	<0.000364	62	30-130			
2-Methylnaphthalene	0.103	0.000645	"	0.166	<0.000645	62	30-130			
Acenaphthene	0.125	0.000304	"	0.166	<0.000304	75.3	30-130			
Anthracene	0.133	0.000334	"	0.166	<0.000334	80.1	30-130			
Benzo(a)anthracene	0.123	0.000493	"	0.166	<0.000493	74	30-130			
Benzo(a)pyrene	0.124	0.000468	"	0.166	<0.000468	74.6	30-130			
Surrogate: Nitrobenzene-d5	60.7		"	0.331	202	60.7	29-110			
Surrogate: 2-Fluorobiphenyl	70.9		"	0.331	232	70.9	33-115			
Surrogate: 4-Terphenyl-d14	101		"	0.331	331	101	33-122			

**LCS (LCS-L618759)**

Prepared: 05/31/2022 Analyzed: 05/31/2022

Fluoranthene	0.143	0.000394	mg/Kg	0.167		85.6	30-130
Benzo(k)fluoranthene	0.101	0.000437	"	0.167		60.4	30-130
Naphthalene	0.0942	0.000484	"	0.167		56.4	30-130
Pyrene	0.142	0.000643	"	0.167		85	30-130
Fluorene	0.116	0.000286	"	0.167		69.4	30-130
Dibenz(a,h)anthracene	0.104	0.000614	"	0.167		62.2	30-130
Chrysene	0.115	0.000624	"	0.167		68.8	30-130
1-Methylnaphthalene	0.0975	0.000364	"	0.167		58.3	30-130
Benzo(a)pyrene	0.122	0.000468	"	0.167		73	30-130
Benzo(a)anthracene	0.12	0.000493	"	0.167		71.8	30-130
Anthracene	0.132	0.000334	"	0.167		79	30-130
Acenaphthene	0.119	0.000304	"	0.167		71.2	30-130
2-Methylnaphthalene	0.0971	0.000645	"	0.167		58.1	30-130
Indeno(1,2,3-cd)pyrene	0.111	0.000627	"	0.167		66.4	30-130

Origins Laboratory, Inc.



The results in this report apply to the samples analyzed in accordance with the chain of custody document. This analytical report must be reproduced in its entirety.

Eagle Environmental Consulting, Inc.  
8000 W 44th Ave  
Wheat Ridge CO 80033

Martin C Eckert III  
Project Number: [none]  
Project: Noble - Cody #D #3-7

**PAH by 8270D SIM - Quality Control**  
**Waypoint Analytical, Inc.**

Analyte	Result	Reporting Limit	Units	Spike Level	Source Result	%REC	%REC Limits	RPD	RPD Limit	Notes
<b>Batch L618759 - 3550B</b>										
<b>LCS (LCS-L618759)</b>					Prepared: 05/31/2022 Analyzed: 05/31/2022					
Benzo(b)fluoranthene	0.112	0.000585	mg/Kg	0.167		67	30-130			
Surrogate: Nitrobenzene-d5	65.1		"	0.333		65.1	29-110			
Surrogate: 4-Terphenyl-d14	118		"	0.333		118	33-122			
Surrogate: 2-Fluorobiphenyl	80.1		"	0.333		80.1	33-115			
<b>LRB (LRB-L618759)</b>					Prepared: 05/31/2022 Analyzed: 05/31/2022					
Chrysene	ND	0.00067	mg/Kg				-			
Dibenz(a,h)anthracene	ND	0.00067	"				-			
Fluoranthene	ND	0.00067	"				-			
Fluorene	ND	0.00067	"				-			
Indeno(1,2,3-cd)pyrene	ND	0.00067	"				-			
Benzo(k)fluoranthene	ND	0.00067	"				-			
Naphthalene	ND	0.00067	"				-			
Benzo(b)fluoranthene	ND	0.00067	"				-			
Benzo(a)pyrene	ND	0.00067	"				-			
Benzo(a)anthracene	ND	0.00067	"				-			
Acenaphthene	ND	0.00067	"				-			
2-Methylnaphthalene	ND	0.00067	"				-			
1-Methylnaphthalene	ND	0.00067	"				-			
Pyrene	ND	0.00067	"				-			
Anthracene	ND	0.00067	"				-			
Surrogate: Nitrobenzene-d5	60.3		"	0.333		60.3	29-110			
Surrogate: 4-Terphenyl-d14	91.5		"	0.333		91.5	33-122			
Surrogate: 2-Fluorobiphenyl	68.4		"	0.333		68.4	33-115			

Origins Laboratory, Inc.



The results in this report apply to the samples analyzed in accordance with the chain of custody document. This analytical report must be reproduced in its entirety.

Eagle Environmental Consulting, Inc.  
8000 W 44th Ave  
Wheat Ridge CO 80033

Martin C Eckert III  
Project Number: [none]  
Project: Noble - Cody #D #3-7

### Notes and Definitions

U Sample is Non-Detect.

QM-07 The spike recovery was outside acceptance limits for the MS and/or MSD. The batch was accepted based on acceptable LCS recovery.

J Estimated Value. Analyte below reported quantitation limit.

\* QC Failure

ND Analyte NOT DETECTED at or above the reporting limit

RPD Relative Percent Difference

All soil results are reported on a wet weight basis.

Origins Laboratory, Inc.



*The results in this report apply to the samples analyzed in accordance with the chain of custody document. This analytical report must be reproduced in its entirety.*





June 14, 2022

Eagle Environmental Consulting, Inc.

Martin C Eckert III

8000 W 44th Ave

Wheat Ridge CO 80033

Project Name - Noble - Cody #D #3-7

Project Number - [none]

Attached are your analytical results for Noble - Cody #D #3-7 received by Origins Laboratory, Inc. June 07, 2022. This project is associated with Origins project number Y206181-01.

The analytical results in the following report were analyzed under the guidelines of EPA Methods. These methods are identified as follows; "SW" are defined in SW-846, "EPA" are defined in 40CFR part 136 and "SM" are defined in the most current revision of Standard Methods For the Examination of Water and Wastewater.

The analytical results apply specifically to the samples and analyses specified per the attached Chain of Custody. As such, this report shall not be reproduced except in full, without the written approval of Origin's laboratory.

Unless otherwise noted, the analytical results for all soil samples are reported on a wet weight basis. All analytical analyses were performed under NELAP guidelines unless noted by a data qualifier.

Any holding time exceedances, deviations from the method specifications or deviations from Origins Laboratory's Standard Operating Procedures are outlined in the case narrative.

Thank you for selecting Origins for your analytical needs. Please contact us with any questions concerning this report, or if we can help with anything at all.

Origins Laboratory, Inc.  
303.433.1322  
o-squad@oelabinc.com



1725 Elk Place, Denver, CO 80211 | Phone: 303.433.1322 | Fax: 303.265.9645

Eagle Environmental Consulting, Inc.

8000 W 44th Ave

Wheat Ridge CO 80033

Martin C Eckert III

Project Number: [none]

Project: Noble - Cody #D #3-7

### CROSS REFERENCE REPORT

Sample ID	Laboratory ID	Matrix	Date Sampled	Date Received
Background-02@2'	Y206181-01	Soil	May 24, 2022 11:06	06/07/2022 16:10

Origins Laboratory, Inc.



*The results in this report apply to the samples analyzed in accordance with the chain of custody document. This analytical report must be reproduced in its entirety.*

Martin C Eckert III  
Project Number: [none]  
Project: Noble - Cody #D #3-7

# ORIGINS

LABORATORY, INC.

www.originslaboratory.com

page | of |

**yours!**

Client: Eagle Env. Consulting  
Address: 8000 W 44th Ave  
Wheat Ridge, CO 80033  
Telephone Number: 303-433-0479  
Email Address: mce3@eagle-enviro.com

Project Manager: Martin Eckert III  
Project Name: Cody #D#3-7  
Project Number: —  
Samples Collected By: RH

Sample ID Description	Date Sampled	Time Sampled	# of Containers	Preservative				Matrix			Analysis	Sample Instructions
				HCl	HNO <sub>3</sub>	Other	Groundwater	Soil	Air Summa Canister #	Other		
Background-0202'	5/24/22	1106	2	X			X				pH = 9.0-15 D Toxic 915 Cody 2020	1 pH = 9.0-15 D 2 waste prep 3 4 MMS needed 5 6 7 8 9 10
Relinquished By: <i>Eric Rickles</i>	Date: 06-07-2022	Time: 1610										Turnaround Time: Same Day <input type="checkbox"/> 24 Hr <input type="checkbox"/> 48 Hr <input type="checkbox"/> 72 Hr <input type="checkbox"/> Standard <input checked="" type="checkbox"/>
Relinquished By:	Date:	Time:										

Temp Received- 1.0

Date Results Needed

4/10/24

4/11 to Cole

Origins Laboratory, Inc.

Byron

*The results in this report apply to the samples analyzed in accordance with the chain of custody document. This analytical report must be reproduced in its entirety.*

Eagle Environmental Consulting, Inc.  
8000 W 44th Ave  
Wheat Ridge CO 80033

Martin C Eckert III  
Project Number: [none]  
Project: Noble - Cody #D #3-7

Origins Laboratory

F-012207-01-R1  
Effective Date: 01/09/12

### Sample Receipt Checklist

Origins Work Order: 470011561 Client: EOGHC  
Client Project ID: Cody D 3-7

Checklist Completed by: KEH Shipped Via: HD  
(UPS, FedEx, Hand Delivered, Pick-up, etc.)  
Date/time completed: 6/18/22 Airbill #: N/A

Matrix(s) Received: (Check all that apply): 1 Soil/Solid          Water          Other:         

Cooler Number/Temperature: 1 / 1.6 °C          /          °C          /          °C (Describe)          °C

Thermometer ID: TSC4

Requirement Description	Yes	No	N/A	Comments (if any)
If samples require cooling, was the temperature between 0°C to ≤ 6°C <sup>(1)</sup> ?	<u>        </u>	<u>        </u>	<u>        </u>	<u>        </u>
Is there ice present (document if blue ice is used)?	<u>        </u>	<u>        </u>	<u>        </u>	<u>        </u>
Are custody seals present on cooler? (if so, document in comments if they are signed and dated, broken or intact)	<u>        </u>	<u>        </u>	<u>        </u>	<u>        </u>
Are custody seals present on each sample container? (if so, document in comments if they are signed and dated, broken or intact)	<u>        </u>	<u>        </u>	<u>        </u>	<u>        </u>
Were all samples received intact <sup>(1)</sup> ?	<u>        </u>	<u>        </u>	<u>        </u>	<u>        </u>
Was adequate sample volume provided <sup>(1)</sup> ?	<u>        </u>	<u>        </u>	<u>        </u>	<u>        </u>
Are short holding time analytes or samples with HTs due within 48 hours present <sup>(1)</sup> ?	<u>        </u>	<u>        </u>	<u>        </u>	<u>        </u>
Is a chain-of-custody (COC) present and filled out completely <sup>(1)</sup> ?	<u>        </u>	<u>        </u>	<u>        </u>	<u>        </u>
Does the COC agree with the number and type of sample bottles received <sup>(1)</sup> ?	<u>        </u>	<u>        </u>	<u>        </u>	<u>        </u>
Do the sample IDs on the bottle labels match the COC <sup>(1)</sup> ?	<u>        </u>	<u>        </u>	<u>        </u>	<u>        </u>
Is the COC properly relinquished by the client with date and time recorded <sup>(1)</sup> ?	<u>        </u>	<u>        </u>	<u>        </u>	<u>        </u>
For volatiles in water – is there headspace (> ¼ inch bubble) present? If yes, contact client and note in narrative.	<u>        </u>	<u>        </u>	<u>        </u>	<u>        </u>
Are samples preserved that require preservation and was it checked <sup>(1)</sup> ? (note ID of confirmation instrument used in comments) / (preservation is not confirmed for subcontracted analyses in order to insure sample integrity) / (pH < 2 for samples preserved with HNO <sub>3</sub> , HCL, H <sub>2</sub> SO <sub>4</sub> ) / (pH > 10 for samples preserved with NaAsO <sub>2</sub> +NaOH, ZnAc+NaOH)	<u>        </u>	<u>        </u>	<u>        </u>	<u>        </u>
Additional Comments (if any):   				

<sup>(1)</sup> If NO, then contact the client before proceeding with analysis and note date/time and person contacted as well as the corrective action to in the additional comments (above) and the case narrative.

Reviewed by (Project Manager)          Date/Time Reviewed 6/19/22

Origins Laboratory, Inc.

*J. Bynon*

The results in this report apply to the samples analyzed in accordance with the chain of custody document. This analytical report must be reproduced in its entirety.

Eagle Environmental Consulting, Inc.  
8000 W 44th Ave  
Wheat Ridge CO 80033

Martin C Eckert III  
Project Number: [none]  
Project: Noble - Cody #D #3-7

## Background-02@2'

5/24/2022 11:06:00AM

Analyte	Result	Min Detection Limit	Reporting Limit	Units	Dilution	Batch	Prepared	Analyzed	Notes
---------	--------	---------------------	-----------------	-------	----------	-------	----------	----------	-------

## Origins Laboratory, Inc. Y206181-01 (Soil)

### pH in Soil by 9045D

pH	9.36		pH Units	1	B2F1304	06/13/2022	06/14/2022
----	------	--	----------	---	---------	------------	------------

### Table 915 metals by EPA 6020B

Arsenic	1.70	0.100	mg/kg	1	B2F0821	06/08/2022	06/09/2022
Barium	46.5	10.0	"	"	"	"	"
Cadmium	ND	0.100	"	"	"	"	" U
Copper	ND	10.0	"	"	"	"	" U
Lead	4.53	1.00	"	"	"	"	"
Nickel	3.92	1.00	"	"	"	"	"
Selenium	0.127	0.100	"	"	"	"	"
Silver	ND	0.100	"	"	"	"	" U
Zinc	15.6	10.0	"	"	"	"	"

### Total Metals by 7196A

Chromium, Hexavalent	ND	0.245	0.503	mg/Kg	1	L620960	05/24/2022	06/10/2022
----------------------	----	-------	-------	-------	---	---------	------------	------------

Origins Laboratory, Inc.



The results in this report apply to the samples analyzed in accordance with the chain of custody document. This analytical report must be reproduced in its entirety.



Eagle Environmental Consulting, Inc.  
8000 W 44th Ave  
Wheat Ridge CO 80033

Martin C Eckert III  
Project Number: [none]  
Project: Noble - Cody #D #3-7

## Metals by SM 3500 Series Methods - Quality Control

### Origins Laboratory, Inc.

Analyte	Result	Reporting Limit	Units	Spike Level	Source Result	%REC	%REC Limits	RPD	RPD Limit	Notes
---------	--------	-----------------	-------	-------------	---------------	------	-------------	-----	-----------	-------

#### Batch B2F0821 - Default Prep Metals

##### Blank (B2F0821-BLK1)

Prepared: 06/08/2022 Analyzed: 06/09/2022

Arsenic	ND	0.100	mg/kg							U
Barium	ND	10.0	"							U
Cadmium	ND	0.100	"							U
Copper	ND	10.0	"							U
Lead	ND	1.00	"							U
Nickel	ND	1.00	"							U
Selenium	ND	0.100	"							U
Silver	ND	0.100	"							U
Zinc	ND	10.0	"							U

##### LCS (B2F0821-BS1)

Prepared: 06/08/2022 Analyzed: 06/09/2022

Arsenic	0.0499	0.100	mg/kg	0.0500		99.9	80-120			U
Barium	4.55	10.0	"	5.00		91.0	80-120			U
Cadmium	0.0534	0.100	"	0.0500		107	80-120			U
Copper	0.514	10.0	"	0.500		103	80-120			U
Lead	0.0500	1.00	"	0.0500		100	80-120			U
Nickel	0.0513	1.00	"	0.0500		103	80-120			U
Selenium	0.0487	0.100	"	0.0500		97.5	80-120			U
Silver	0.0517	0.100	"	0.0500		103	80-120			U
Zinc	0.489	10.0	"	0.500		97.8	80-120			U

##### Matrix Spike (B2F0821-MS1)

Source: Y206181-01

Prepared: 06/08/2022 Analyzed: 06/09/2022

Arsenic	8.38	0.100	mg/kg	10.0	1.70	66.7	75-125			QM-07
Barium	973	10.0	"	1000	46.5	92.4	75-125			
Cadmium	7.38	0.100	"	10.0	0.0521	73.0	75-125			QM-07
Copper	73.9	10.0	"	100	3.46	70.2	75-125			QM-07
Lead	15.1	1.00	"	10.0	4.53	105	75-125			

Origins Laboratory, Inc.



The results in this report apply to the samples analyzed in accordance with the chain of custody document. This analytical report must be reproduced in its entirety.

Eagle Environmental Consulting, Inc.  
8000 W 44th Ave  
Wheat Ridge CO 80033

Martin C Eckert III  
Project Number: [none]  
Project: Noble - Cody #D #3-7

## Metals by SM 3500 Series Methods - Quality Control

### Origins Laboratory, Inc.

Analyte	Result	Reporting Limit	Units	Spike Level	Source Result	%REC	%REC Limits	RPD	RPD Limit	Notes
<b>Batch B2F0821 - Default Prep Metals</b>										
<b>Matrix Spike (B2F0821-MS1)</b>			<b>Source: Y206181-01</b>		Prepared: 06/08/2022 Analyzed: 06/09/2022					
Nickel	10.7	1.00	mg/kg	10.0	3.92	67.6	75-125			QM-07
Selenium	7.13	0.100	"	10.0	0.127	69.8	75-125			QM-07
Silver	10.4	0.100	"	10.0	0.0287	104	75-125			
Zinc	83.1	10.0	"	100	15.6	67.2	75-125			QM-07
<b>Matrix Spike Dup (B2F0821-MSD1)</b>			<b>Source: Y206181-01</b>		Prepared: 06/08/2022 Analyzed: 06/09/2022					
Arsenic	7.22	0.100	mg/kg	8.81	1.70	62.7	75-125	15.0	20	QM-07
Barium	848	10.0	"	881	46.5	91.0	75-125	13.7	20	
Cadmium	6.13	0.100	"	8.81	0.0521	69.0	75-125	18.5	20	QM-07
Copper	62.1	10.0	"	88.1	3.46	66.6	75-125	17.4	20	QM-07
Lead	13.5	1.00	"	8.81	4.53	102	75-125	11.2	20	
Nickel	9.28	1.00	"	8.81	3.92	60.9	75-125	14.2	20	QM-07
Selenium	5.93	0.100	"	8.81	0.127	65.8	75-125	18.5	20	QM-07
Silver	9.07	0.100	"	8.81	0.0287	103	75-125	14.0	20	
Zinc	70.8	10.0	"	88.1	15.6	62.6	75-125	16.0	20	QM-07

Origins Laboratory, Inc.



The results in this report apply to the samples analyzed in accordance with the chain of custody document. This analytical report must be reproduced in its entirety.

Eagle Environmental Consulting, Inc.  
8000 W 44th Ave  
Wheat Ridge CO 80033

Martin C Eckert III  
Project Number: [none]  
Project: Noble - Cody #D #3-7

## Saturated Paste - Quality Control Origins Laboratory, Inc.

Analyte	Result	Reporting Limit	Units	Spike Level	Source Result	%REC	%REC Limits	RPD	RPD Limit	Notes
<b>Batch B2F1304 - NO PREP</b>										
<b>Blank (B2F1304-BLK1)</b>					Prepared: 06/13/2022 Analyzed: 06/14/2022					
pH	0.00		pH Units							
<b>Duplicate (B2F1304-DUP1)</b>					Source: Y206197-02 Prepared: 06/13/2022 Analyzed: 06/14/2022					
pH	8.15		pH Units		8.11			0.492	25	

Origins Laboratory, Inc.



*The results in this report apply to the samples analyzed in accordance with the chain of custody document. This analytical report must be reproduced in its entirety.*

Eagle Environmental Consulting, Inc.  
8000 W 44th Ave  
Wheat Ridge CO 80033

Martin C Eckert III  
Project Number: [none]  
Project: Noble - Cody #D #3-7

## Total Metals by 7196A - Quality Control Waypoint Analytical, LLC.

Analyte	Result	Reporting Limit	Units	Spike Level	Source Result	%REC	%REC Limits	RPD	RPD Limit	Notes
<b>Batch L620960 -</b>										
<b>DUP (L 92431-DUP)</b>	<b>Source: Y206181-01</b>				Prepared: Analyzed: 06/10/2022					
Chromium, Hexavalent	ND	0.251	mg/Kg		<0.516	-		0	20	
<b>MS (L 92431-MS)</b>	<b>Source: Y206181-01</b>				Prepared: Analyzed: 06/10/2022					
Chromium, Hexavalent	6.3	0.247	mg/Kg	8.12	<0.247	78	75-125			
<b>LCS (LCS)</b>					Prepared: Analyzed: 06/10/2022					
Chromium, Hexavalent	7.61	0.244	mg/Kg	8		95	75-125			
<b>LRB (LRB)</b>					Prepared: Analyzed: 06/10/2022					
Chromium, Hexavalent	ND	0.5	mg/Kg				-			

Origins Laboratory, Inc.



*The results in this report apply to the samples analyzed in accordance with the chain of custody document. This analytical report must be reproduced in its entirety.*

Eagle Environmental Consulting, Inc.  
8000 W 44th Ave  
Wheat Ridge CO 80033

Martin C Eckert III  
Project Number: [none]  
Project: Noble - Cody #D #3-7

### Notes and Definitions

U Sample is Non-Detect.

QM-07 The spike recovery was outside acceptance limits for the MS and/or MSD. The batch was accepted based on acceptable LCS recovery.

ND Analyte NOT DETECTED at or above the reporting limit

RPD Relative Percent Difference

All soil results are reported on a wet weight basis.

Origins Laboratory, Inc.



*The results in this report apply to the samples analyzed in accordance with the chain of custody document. This analytical report must be reproduced in its entirety.*