

## Inspection Photos

Location Name: TEP ROCKY MOUNTAIN LLC WILLIAMS SG 522-32 pad

Location ID: 334401



Photo # 2621 From entrance to location



Photo # 2622 From entrance to location

## Inspection Photos

Location Name: TEP ROCKY MOUNTAIN LLC WILLIAMS SG 522-32 pad

Location ID: 334401



Photo # 2623 Location



Photo # 2624 Location



**COLORADO**  
Oil & Gas Conservation  
Commission  
Department of Natural Resources



## Inspection Photos

Location Name: TEP ROCKY MOUNTAIN LLC WILLIAMS SG 522-32 pad

Location ID: 334401



Photo # 2625 Location



Photo # 2626 Wellhead sign peeling & illegible

## Inspection Photos

Location Name: TEP ROCKY MOUNTAIN LLC WILLIAMS SG 522-32 pad

Location ID: 334401



Photo # 2629 Battery sign peeling & illegible

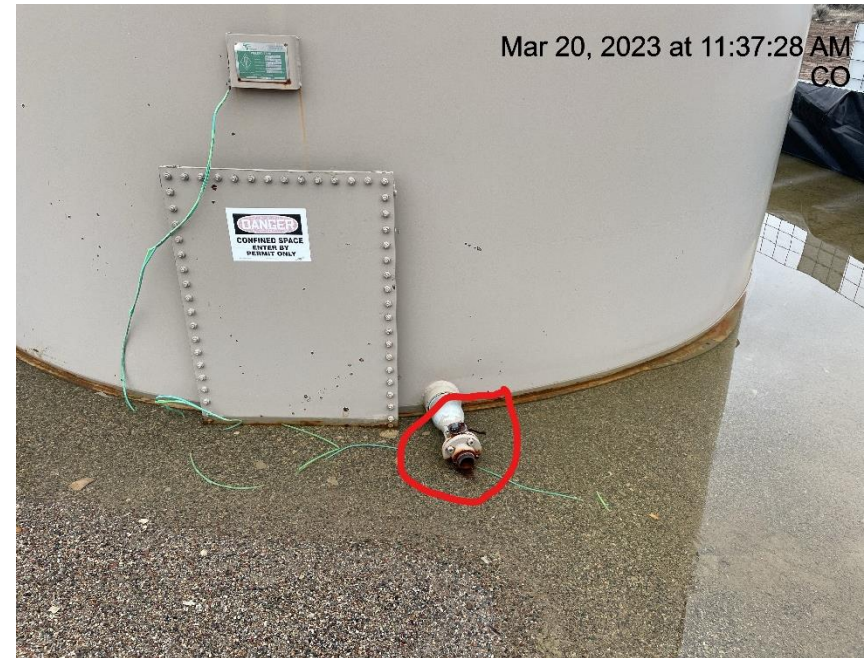


Photo # 2632 Open ended load line



**COLORADO**  
Oil & Gas Conservation  
Commission  
Department of Natural Resources



## Inspection Photos

Location Name: TEP ROCKY MOUNTAIN LLC WILLIAMS SG 522-32 pad

Location ID: 334401



**Photo # 2633 Meter calibration info not conspicuously posted**



**Photo # 2647 Unused equipment**

## Inspection Photos

Location Name: TEP ROCKY MOUNTAIN LLC WILLIAMS SG 522-32 pad

Location ID: 334401



**Photo # 6668 – 05/10/2022 Location lacks stabilization**



**Photo # 2645 Lack of stabilization**



## Inspection Photos

Location Name: TEP ROCKY MOUNTAIN LLC WILLIAMS SG 522-32 pad

Location ID: 334401



**Photo # 6669 – 05/10/2022 Location lacks stabilization**



**Photo # 2646 Lack of stabilization**





## Inspection Photos

Location Name: TEP ROCKY MOUNTAIN LLC WILLIAMS SG 522-32 pad

Location ID: 334401



**Photo # 2643 Lack of stabilization**



**Photo # 2636 Rill erosion west side of location**



## Inspection Photos

Location Name: TEP ROCKY MOUNTAIN LLC WILLIAMS SG 522-32 pad

Location ID: 334401



**Photo # 2637 Rill erosion & transport of sediment off location (west side)**



**Photo # 2640 Rill erosion near settling pond NW corner**



## Inspection Photos

Location Name: TEP ROCKY MOUNTAIN LLC WILLIAMS SG 522-32 pad

Location ID: 334401



**Photo # 2641 Rill erosion**



**Photo # 2651 Gully erosion near bollards at entrance to location**



## Inspection Photos

Location Name: TEP ROCKY MOUNTAIN LLC WILLIAMS SG 522-32 pad

Location ID: 334401



Photo # 2593 Lack of stabilization on lease road



Photo # 2599 Lack of stabilization on lease road



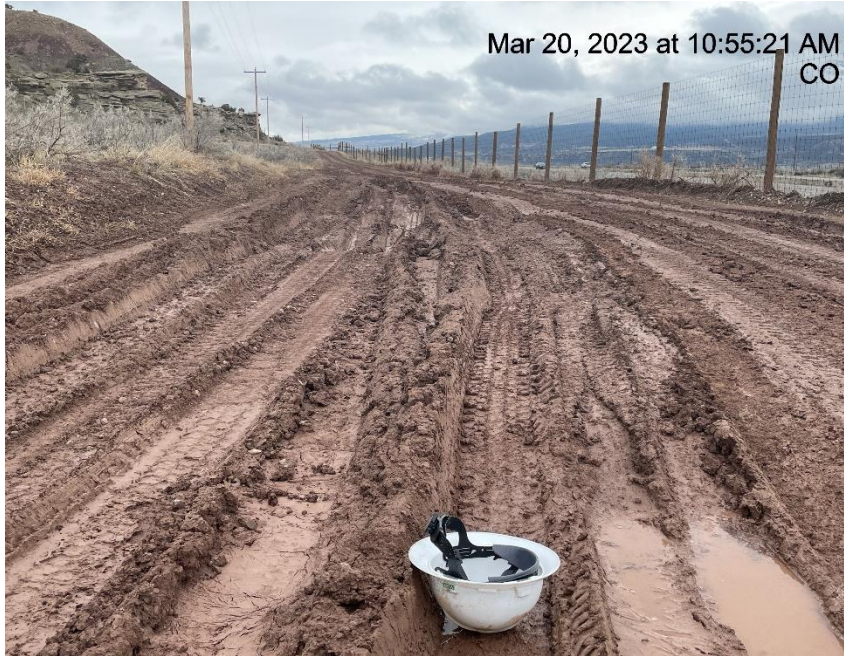
**COLORADO**  
Oil & Gas Conservation  
Commission  
Department of Natural Resources



## Inspection Photos

Location Name: TEP ROCKY MOUNTAIN LLC WILLIAMS SG 522-32 pad

Location ID: 334401



**Photo # 2600 Lack of stabilization on lease road**



**Photo # 2602 Lack of stabilization on lease road**



**COLORADO**  
Oil & Gas Conservation  
Commission  
Department of Natural Resources



## Inspection Photos

Location Name: TEP ROCKY MOUNTAIN LLC WILLIAMS SG 522-32 pad

Location ID: 334401



**Photo # 2612 Lack of stabilization on lease road**



**Photo # 2594 Culvert needs maintenance**



## Inspection Photos

Location Name: TEP ROCKY MOUNTAIN LLC WILLIAMS SG 522-32 pad

Location ID: 334401



**Photo # 2606 Culvert needs maintenance**



**Photo # 2607 Culvert needs maintenance**



**COLORADO**  
Oil & Gas Conservation  
Commission  
Department of Natural Resources



## Inspection Photos

Location Name: TEP ROCKY MOUNTAIN LLC WILLIAMS SG 522-32 pad

Location ID: 334401



Photo # 2609 Waddles around culvert need maintenance



Photo # 2595 Gully erosion



## Inspection Photos

Location Name: TEP ROCKY MOUNTAIN LLC WILLIAMS SG 522-32 pad

Location ID: 334401



**Photo # 2603 Rill erosion on lease road**



**Photo # 2605 Rill erosion on lease road**



## Inspection Photos

Location Name: TEP ROCKY MOUNTAIN LLC WILLIAMS SG 522-32 pad

Location ID: 334401



**Photo # 2608 Rill erosion on lease road**



**Photo # 2614 Erosion on lease road**



## Inspection Photos

Location Name: TEP ROCKY MOUNTAIN LLC WILLIAMS SG 522-32 pad

Location ID: 334401



**Photo # 2616 Degradation of roadway/insufficient BMP's**



**Photo # 2617 Degradation of roadway/insufficient BMP's**



## Inspection Photos

Location Name: TEP ROCKY MOUNTAIN LLC WILLIAMS SG 522-32 pad

Location ID: 334401



**Photo # 2613 Degradation of roadway/insufficient BMP's/erosion of area near road**



**Photo # 2618 Degradation of roadway/insufficient BMP's/erosion of area near road**



## Inspection Photos

Location Name: TEP ROCKY MOUNTAIN LLC WILLIAMS SG 522-32 pad

Location ID: 334401



**Photo # 2657 Degradation of roadway/insufficient BMP's/erosion of area near road**



**Photo # 2658 Degradation of roadway/insufficient BMP's/erosion of area near road**

