

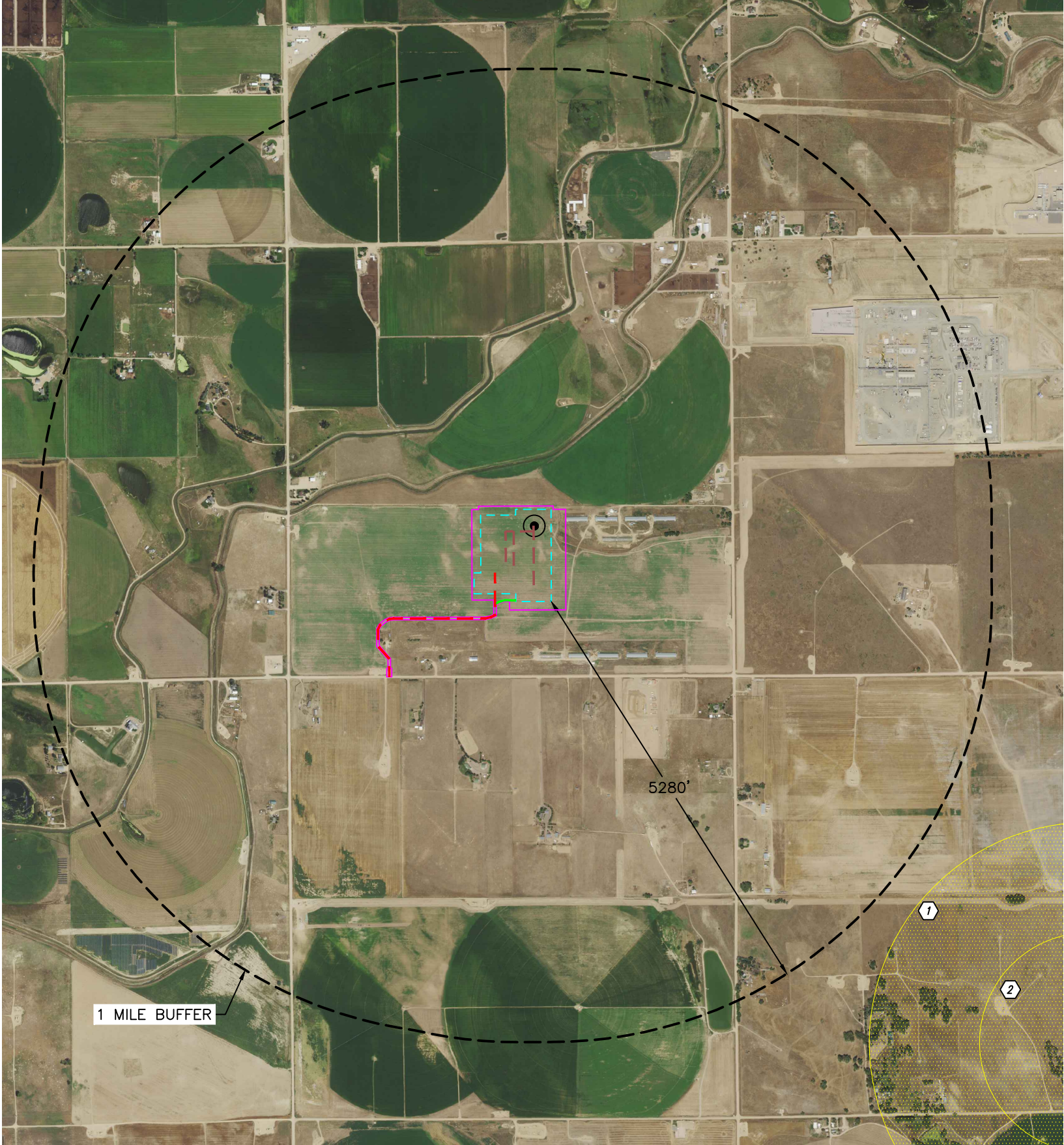


Lat40°, Inc. 6250 W. 10th Street, Unit 2, Greeley, CO 970-515-5294

WILDLIFE HABITAT DRAWING

TRIPPETT 3N66W3 1-48 PAD
PDC ENERGY

Q: E2SW4, W2SE4
SECTION: 3
TOWNSHIP: 3N
RANGE: 66W
6TH. P.M.
WELD COUNTY, CO



WILDLIFE HABITAT:
(MEASURED FROM EDGE OF WORKING PAD SURFACE)
NO WILDLIFE HABITAT IDENTIFIED
WITHIN 1 MILE BUFFER.

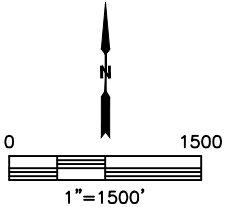
ID	DISTANCE (FT)	DIRECTION	DESCRIPTION
1	±5701	SE	BALD EAGLE ACTIVE NEST SITE - 0.5 MILE BUFFER
2	±7021	SE	BALD EAGLE ACTIVE NEST SITE - 0.25 MILE BUFFER

LEGEND

- PROPOSED REFERENCE POINT
- ID DESIGNATION
- WORKING PAD SURFACE
- AREA OF DISTURBANCE
- HIGH PRIORITY HABITAT
- ACCESS ROAD
- TEMPORARY ACCESS ROAD
- PROPOSED FLOWLINE CORRIDOR

NOTE:
THIS MAP IS A COMPILATION OF PUBLICLY AVAILABLE DATA. THE
ACCURACY AND COMPLETENESS OF SAID DATA HAD NOT BEEN VERIFIED
BY LAT40, INC. EXISTING CONDITIONS MAY DIFFER FROM WHAT IS SHOWN.

DATA SOURCE: COGCC, USFWS, ECOS, CPW



DATE: 6/17/2022
PROJECT#: 2021414