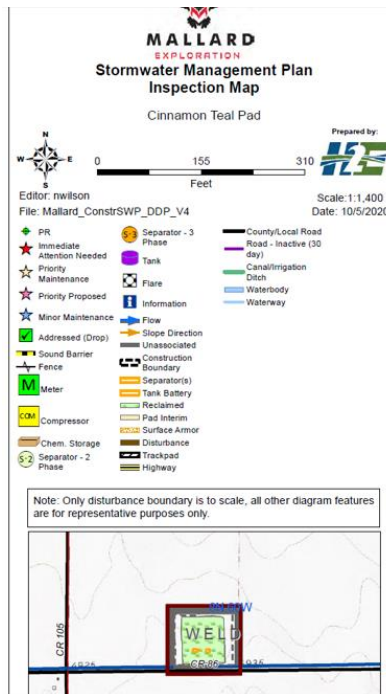


Inspection Photos  
Location Name: Cinnamon Teal Pad  
Location ID: 454592

- Records show, interim reclamation was required to be commenced by 2/2019. Mallard submitted a variance to delay interim reclamation in 1/2019, and it was returned to draft in 4/2019. Mallard did proceed to commence interim reclamation in 3/2020 when they pulled the pad back and seeded/mulched the reclamation.
- Cinnamon Teal's reclamation was re-disturbed in 4/2022 to prepare for more operations/drilling, and it's currently in this active state.
- Pulled-back/Interim map showing previous interim reclamation:



Cinnamon Teal has been set back to pre-construction phase, with pull back on the pad commencing the end of April.

Inspection Photos  
Location Name: Cinnamon Teal Pad  
Location ID: 454592





Inspection Photos  
Location Name: Cinnamon Teal Pad  
Location ID: 454592



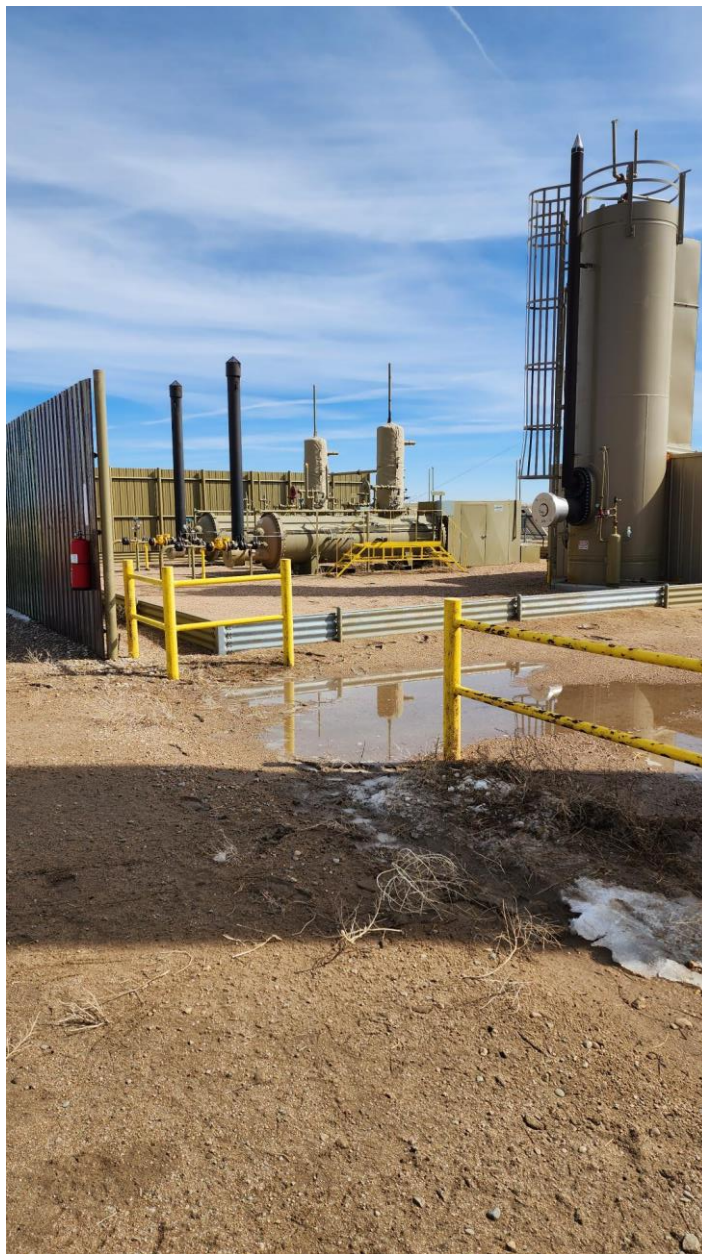


Inspection Photos  
Location Name: Cinnamon Teal Pad  
Location ID: 454592





Inspection Photos  
Location Name: Cinnamon Teal Pad  
Location ID: 454592



Inspection Photos  
Location Name: Cinnamon Teal Pad  
Location ID: 454592

