

Stormwater Inspection

Date: 03/15/2023

Operator: SCHNEIDER ENERGY SERVICES INC - 76840

Location ID: 317498

Inspection Document #: 708200054

Weld County, CO

SWNW Section 14 T7N R60W

Dylan Edwardson
Reclamation Specialist, COGCC



COLORADO
Oil & Gas Conservation
Commission

Department of Natural Resources



Photo 1. Facing east towards location. A water bar (red line) was constructed that appears will divert any stormwater run on/off through the location and towards the eroded area. Blue line illustrates the potential path of stormwater travel with current BMP in place.



Photo 2. Facing north near the eroded area next to pit. No BMPs were observed to prevent or manage stormwater run on and run off with evidence of rill erosion occurring on pit walls (red outline). This area will need to be properly stabilized to prevent further erosion from occurring.

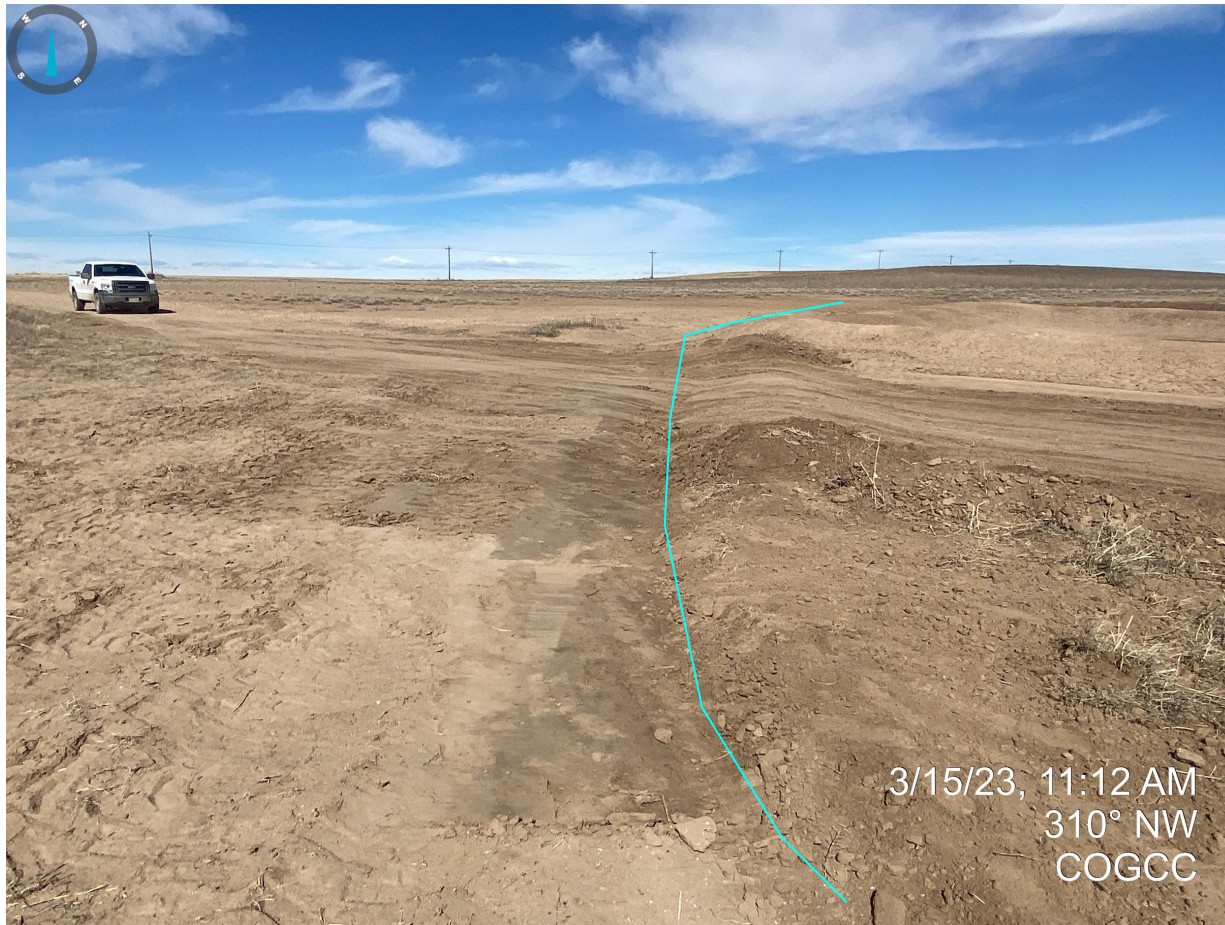


Photo 3. Facing northwest next to water bar/ditch. Blue line illustrates the potential path of stormwater; see comments in Photos 1 and 2 for additional detail.

Inspection Photos
Location Name: April 12-14
Location ID: 317498



Photo 4. Facing northwest; see comments in Photos 1-3.



Photo 5. Facing east from the northwest corner of the location. Photo illustrates the eroded areas have not been stabilized and no BMPs were observed to prevent further stormwater erosion from occurring.



Photo 6. Facing east from the northern portion of the location. A perimeter ditch and berm was constructed around the production area; these BMPs are not sufficient as the berm material is not stabilized and is comprised of loose/unconsolidated material that can become a potential source of pollution itself.

Inspection Photos
Location Name: April 12-14
Location ID: 317498



Photo 7. Facing south near battery; see comments in Photo 6.

Inspection Photos
Location Name: April 12-14
Location ID: 317498



Photo 8. Facing east near battery; see comments in Photo 6.



Photo 9. Facing southwest from the eastern portion of the location; see comments in Photo 6.



Photo 10. Facing west near the sediment trap; see comments in Photo 6.



Photo 11. Facing south at sediment trap. The sediment trap does not appear stabilized at the inlet/outlets with the absence of rip-rap, erosion control blanket, etc. Additionally, the berms are comprised of loose/unconsolidated material and need to be properly stabilized to prevent further off-site sediment transport.



Photo 12. Facing south within recently reclaimed portion. Outline illustrates that the eroded areas have not been repaired/stabilized and no evidence of stormwater BMPs observed to prevent further off-location sediment transport. The impacted areas will need to be reclaimed, including any off-location disturbances.

Inspection Photos
Location Name: April 12-14
Location ID: 317498



Photo 13. Facing south; see comments in Photo 12.



Photo 14. Facing south at adjacent land. No stormwater BMPs were identified at the time of this inspection that would prevent sediment laden stormwater from continuing to exit off location. Blue polygon illustrates freshwater emergent wetland approximately 600' south and down gradient of location. This portion of disturbance will need to be reclaimed per Rule 1004.