

T4S, R96W, 6th P.M.

Caerus Oil & Gas LLC

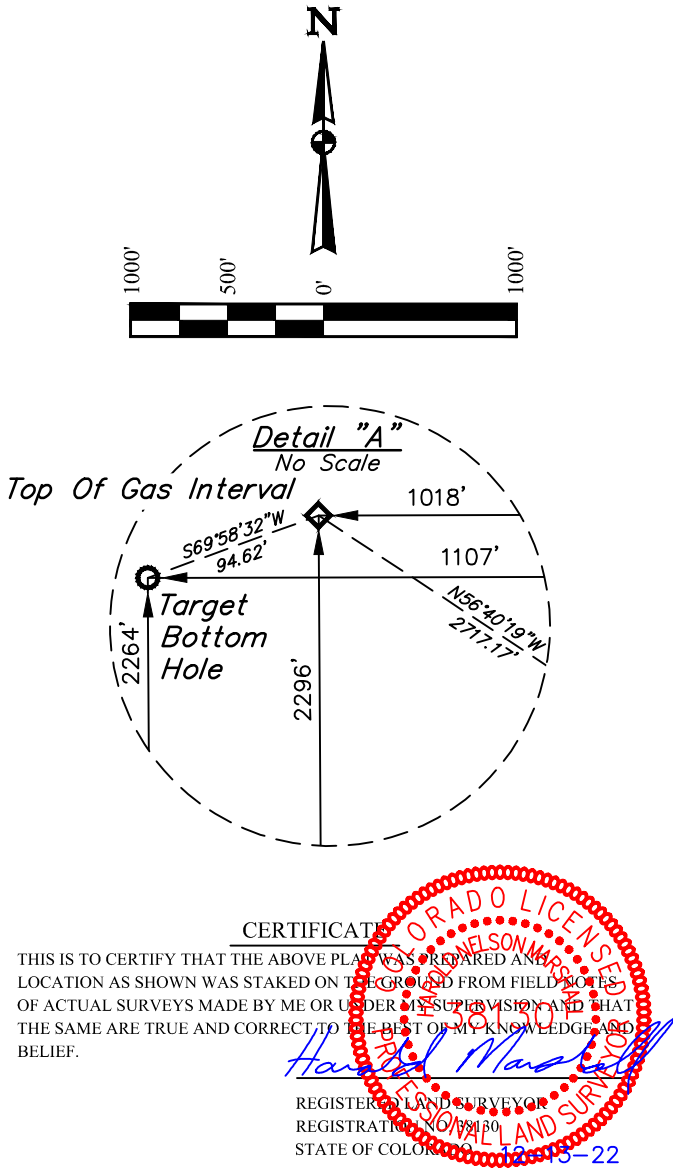
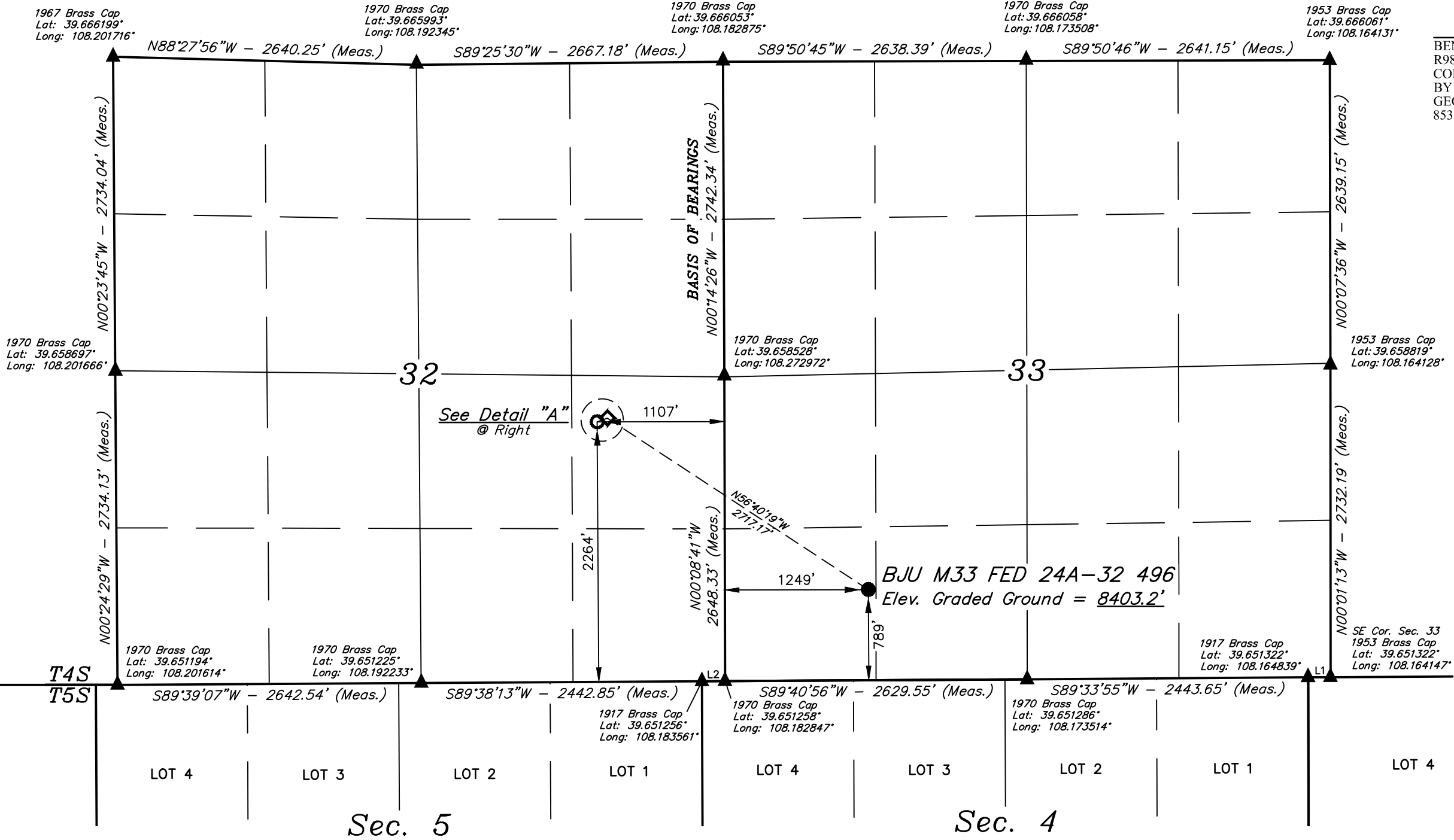
BJU M33 FED 24A-32 496  
SW 1/4 SW 1/4, SECTION 33, T4S, R96W, 6th P.M.  
GARFIELD COUNTY, COLORADO

BASIS OF BEARINGS

BEARINGS ARE A BASED ASSUMPTION THAT THE WEST LINE OF THE NORTHWEST 1/4 OF SECTION 33 BEARS N00°14'26"W. MONUMENTS DESCRIBED HEREON.

BASIS OF ELEVATION

BENCH MARK (H79) LOCATED IN THE NE 1/4 OF SECTION 35, T4S, R98W, 6th P.M., TAKEN FROM THE BULL FORK, QUADRANGLE, COLORADO, 7.5 MINUTE SERIES (TOPOGRAPHIC MAP) PUBLISHED BY THE UNITED STATES DEPARTMENT OF THE INTERIOR, GEOLOGICAL SURVEY. SAID ELEVATION IS MARKED AS BEING 8535 FEET.



NOTE:  
Distances referenced  
on plat to section lines  
are perpendicular.

LEGEND:  
● = PROPOSED WELLHEAD.  
◆ = TOP OF GAS INTERVAL.  
○ = TARGET BOTTOM HOLE.  
▲ = SECTION CORNERS LOCATED. (NAD 83)

NAD 83 (SURFACE LOCATION)	NAD 83 (TOP OF GAS INTERVAL)	NAD 83 (TARGET BOTTOM HOLE)
LATITUDE = 39°39'12.37" (39.653436°)	LATITUDE = 39°39'27.16" (39.657545°)	LATITUDE = 39°39'26.84" (39.657457°)
LONGITUDE = 108°10'42.30" (108.178417°)	LONGITUDE = 108°11'11.28" (108.186467°)	LONGITUDE = 108°11'12.42" (108.186782°)
NAD 27 (SURFACE LOCATION)	NAD 27 (TOP OF GAS INTERVAL)	NAD 27 (TARGET BOTTOM HOLE)
LATITUDE = 39°39'12.46" (39.653461°)	LATITUDE = 39°39'27.25" (39.657570°)	LATITUDE = 39°39'26.93" (39.657481°)
LONGITUDE = 108°10'40.01" (108.177780°)	LONGITUDE = 108°11'08.98" (108.185829°)	LONGITUDE = 108°11'10.12" (108.186145°)
UTM NAD 27 (ZONE 12)	UTM NAD 27 (ZONE 12)	UTM NAD 27 (ZONE 12)
N: 14412352.63' E: 2434843.90'	N: 14413777.89' E: 2432530.86'	N: 14413742.89' E: 2432442.96'

PDOP = 1.4

REV: 4 12-12-22 T.L.L. (SHL, TGI & BHL CHANGES)



UELS, LLC  
Corporate Office \* 85 South 200 East  
Vernal, UT 84078 \* (435) 789-1017

SURVEYED BY	DAYTON SLAUGH	09-16-19	SCALE
DRAWN BY	M.D.	01-03-20	1" = 1000'

WELL LOCATION PLAT