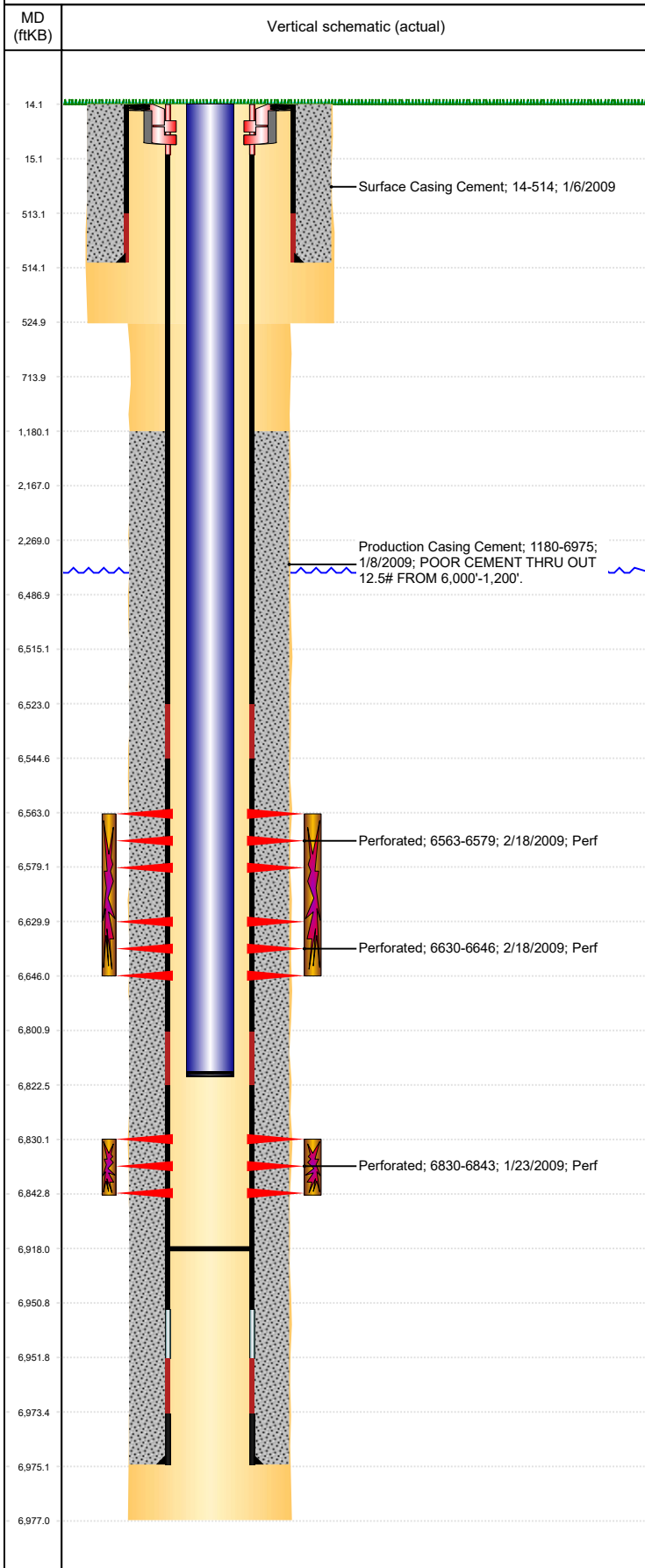




# P&A Wellbore For State

Well Name: FOOS C27-18

Land, Original Hole, 3/13/2023 11:05:56 AM



## Well Header

Surface UWI 0512329390	Business Unit Rockies	Gov Auth Dist	Prod Tree Loc Land
Orig. KB to Gnd (ft) 14.00	Original Spud Date 1/5/2009	Abandon Date	Well Sub-Status PR
High... N			

### Comment

318Ae LOCATION! WELL FILE SHOWS SURFACE CEMENT TOP AT 15 BUT KB IS 14 SO TOP SHOULD BE 14.

## Surface Location (Congressional)

Qtr 3 NW	Qtr 4 NE	Section 27	Twnshp 4	Twnsh... N	Range 64	Rng E/... W	Latitude (°) 40.28720766 5	Longitude (°) -104.536534233
-------------	-------------	---------------	-------------	---------------	-------------	----------------	----------------------------------	---------------------------------

## Wellbore Sections

Section Des	Hole Size (in)	Act Top (ftKB)	Act Btm (ftKB)
SURFACE	12 1/4	14.0	525.0
PRODUCTION	7 7/8	525.0	6,977.0

## Casing Strings

Csg Des	Run Date	OD (in)	Wt/Len (lb/ft)	Grade	Top Depth (MD) (ftKB)	Set Depth (MD) (ftKB)
Surface	1/6/2009	8 5/8	24.00	J-55	14	514
Production Casing	1/8/2009	4 1/2	11.60	M-80	14	6975

## Cement

Des	Start Date	Top (ftKB)	Btm (ftKB)
Surface Casing Cement	1/6/2009	14.0	514.0
Production Casing Cement	1/8/2009	1,180.0	6,975.0

## Zone Statuses

Zone Name	Status Date	Status	Fluid Type	Job	Prod Method
NIOBRARA	3/3/2009	PR		Complete, 1/8/2009 00:00	
CODELL	3/3/2009	PR		Complete, 1/8/2009 00:00	

## Perforation Data

Linked Zone	Explosive Type	Entered Shot Total	Top (ftKB)	Btm (ftKB)	Date
NIOBRARA, Original Hole	A	32	6,563.0	6,579.0	2/18/2009
NIOBRARA, Original Hole	B	32	6,630.0	6,646.0	2/18/2009
CODELL, Original Hole	01	52	6,830.0	6,843.0	1/23/2009

## Stimulation Intervals

Zone	Start Date	Top (ftKB)	Btm (ftKB)
NIOBRARA, Original Hole	2/18/2009	6,563.0	6,646.0
CODELL, Original Hole	2/18/2009	6,830.0	6,843.0

## Other In Hole

Run Date	Des	Make	OD (in)	Top (ftKB)	Btm (ftKB)

## Logs

Date	Type	Depth Top (MD) (ftKB)	Btm (ftKB)
1/8/2009	Caliper/Comp. Density/Neutron/GR/SP/ML	2,600	6,981.0
1/8/2009	DIL/GR/SP/Caliper	514	6,981.0
1/20/2009	CBL/CCL/GR	934	6,946.0

## Plug Back Total Depths

Date	Type	Com	PBTD (ftKB)
1/20/2009	FILL	TAG WITH LOGGING TOOLS.	6,947
1/7/2010	PLUG REMNANTS	75' OF RAT HOLE	6,918