

Final Reclamation and Stormwater Inspection

Date: 03/03/2023

Operator: ST CROIX OPERATING INC - 81490

Location ID: 482780

Inspection Document #: 708200024

Washington County, CO

NENE Section 27 T3S R49W

Dylan Edwardson
Reclamation Specialist, COGCC



COLORADO

**Oil & Gas Conservation
Commission**

Department of Natural Resources

Inspection Photos
Location Name: Horseshoe 1
Location ID: 482780



Photo 1. Facing southwest along the access road to the location. Photo illustrates that the topsoil stockpiles salvaged for the access road remain unconsolidated and not stabilized against wind or water erosion. BMPs will need to be implemented.

Inspection Photos
Location Name: Horseshoe 1
Location ID: 482780



Photo 2. Facing east from the western portion of the location. Final reclamation activities have started with evidence of grading and contouring observed during this inspection. Operator shall continue to comply with 1004 Rules for final reclamation activities and timing requirements.

Inspection Photos
Location Name: Horseshoe 1
Location ID: 482780



Photo 3. Facing northeast, see comments in Photo 2.

Inspection Photos
Location Name: Horseshoe 1
Location ID: 482780



Photo 4. Facing southeast, see comments in Photo 2.

Inspection Photos
Location Name: Horseshoe 1
Location ID: 482780

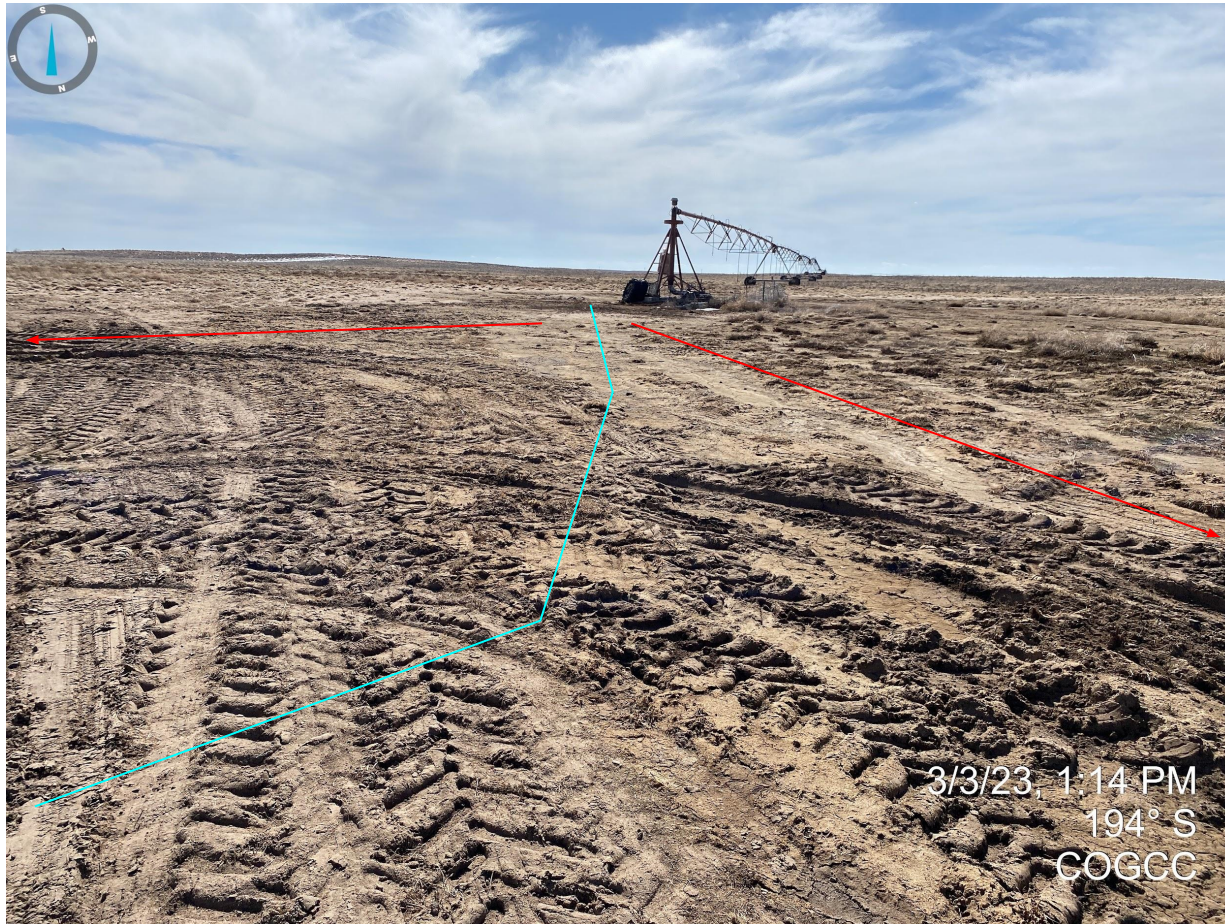


Photo 5. Facing south from the western portion of the location. No stormwater BMPs (e.g. perimeter berm, etc) observed to prevent and manage run on and run off, illustrated by red arrows. Blue line illustrates estimated path of water from broken irrigation line.

Inspection Photos
Location Name: Horseshoe 1
Location ID: 482780

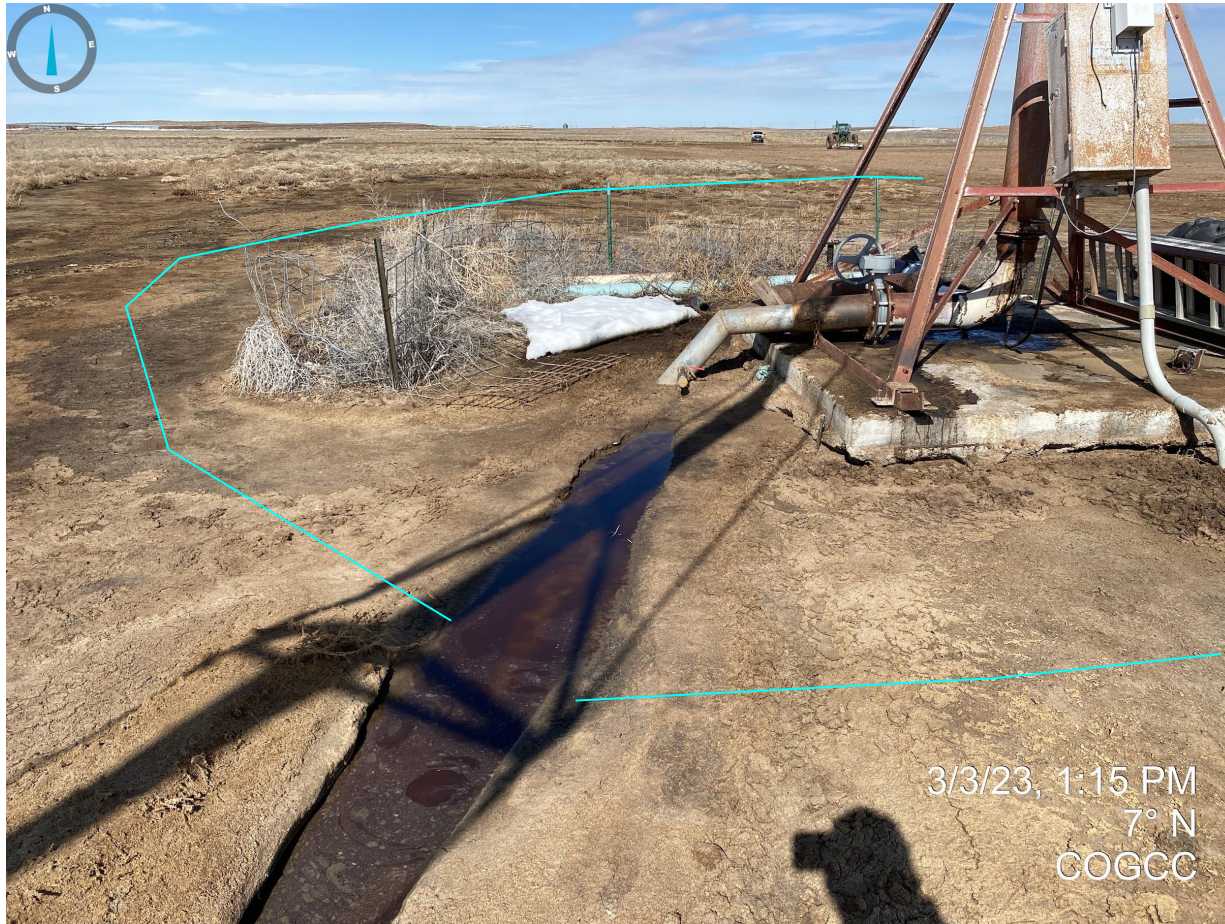


Photo 6. Facing north at center pivot. Blue lines illustrate approximate path of water. No BMPs observed around location to prevent water from coming onto location (e.g. run on)

Inspection Photos
Location Name: Horseshoe 1
Location ID: 482780



Photo 7. Facing northeast from the center pivot, see comments in Photo 6.

Inspection Photos
Location Name: Horseshoe 1
Location ID: 482780



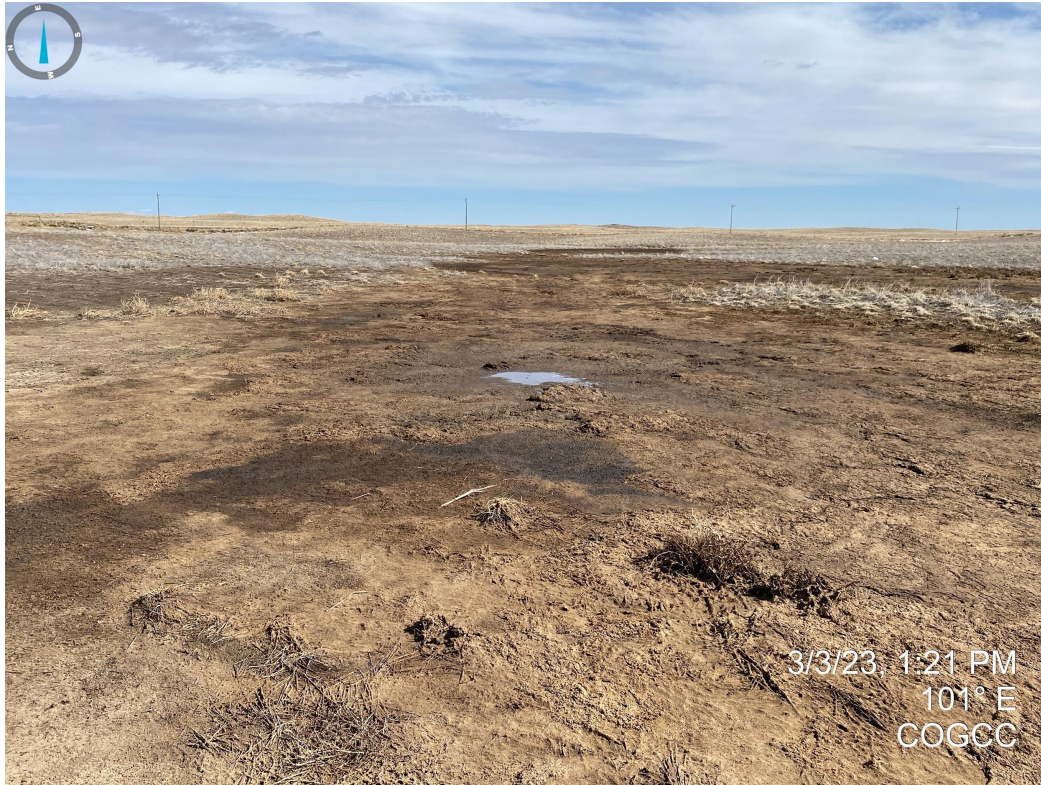
Photo 8. Facing west from the southeast corner of the location, see comments in Photo 5.

Inspection Photos
Location Name: Horseshoe 1
Location ID: 482780



Photo 9. Facing north from the southeast corner of the location, see comments in Photo 5.

Inspection Photos
Location Name: Horseshoe 1
Location ID: 482780



Photos 10 and 11. Facing east from the eastern boundary of the location. Photo illustrates saturated soils, ponding, and evidence of manure (right) from the broken water line at center pivot.

Inspection Photos
Location Name: Horseshoe 1
Location ID: 482780



Photo 12. Facing west from CR YY, Blue line illustrates approximate path of water from broken pipe. Note: ponding water is likely a combination of water from the broken irrigation system and snow melt.

Inspection Photos
Location Name: Horseshoe 1
Location ID: 482780

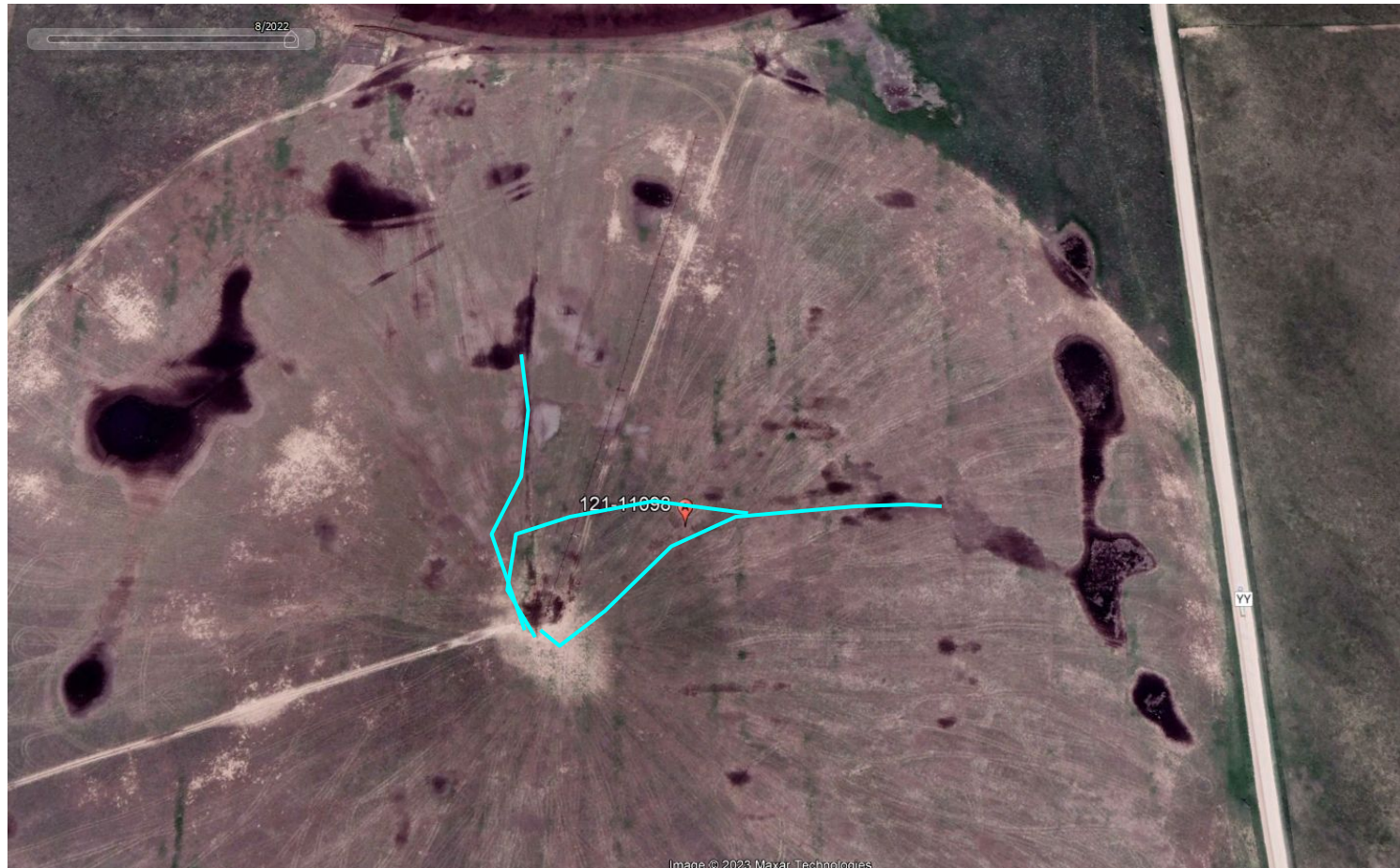


Photo 13. Google Earth aerial imagery taken circa 08/2022. Blue line illustrate approximate path of water from broken water line. The absence of any stormwater BMPs to control run on and run off allowed the water from the broken water line to pass through and off location. Staff acknowledges the broken line happened independent of oil and gas activities.