

Project: Rio Blanco County, CO  
 Site: ELU O13 496 Pad  
 Well: ELU O13 FED 13B-13 496  
 Wellbore: Wellbore #1  
 Design: Design #4  
 Latitude: 39.698705  
 Longitude: -108.114857  
 Ground Level: 8118.0  
 RKB @ 8143.0usft (25')

# PROJECT DETAILS: Rio Blanco County, CO

Geodetic System: Universal Transverse Mercator (US Survey Feet)  
 Datum: NAD 1927 - Western US  
 Ellipsoid: Clarke 1886  
 Zone: Zone 12N (114 W to 108 W)  
 System Datum: Mean Sea Level

## REFERENCE INFORMATION

Vertical (TVD) Reference: RKB @ 8143.0usft (25')  
 Section (VS) Reference: Slot - 13B-13(0.0N, 0.0E)  
 Measured Depth Reference: RKB @ 8143.0usft (25')  
 Calculation Method: Minimum Curvature

## FORMATION TOP DETAILS

TVDPath	MDPath	Formation
4014.0	4068.8	Wasatch
6414.0	6508.9	Wasatch G
6714.0	6813.9	Fort Union
8578.0	8705.1	Ohio Creek
9141.0	9268.3	Williams Fork
11797.0	11925.0	Cameo
12347.0	12475.2	Rollins

## SECTION DETAILS

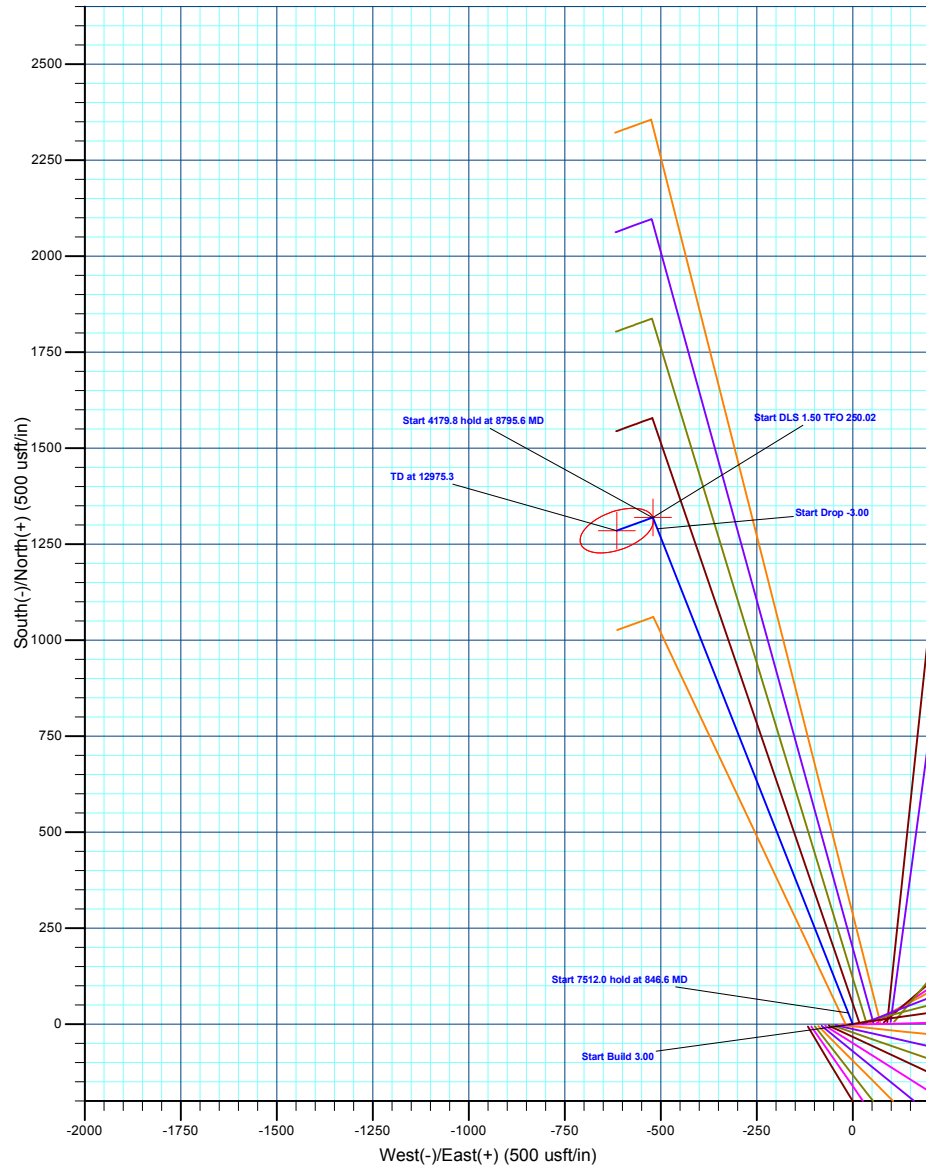
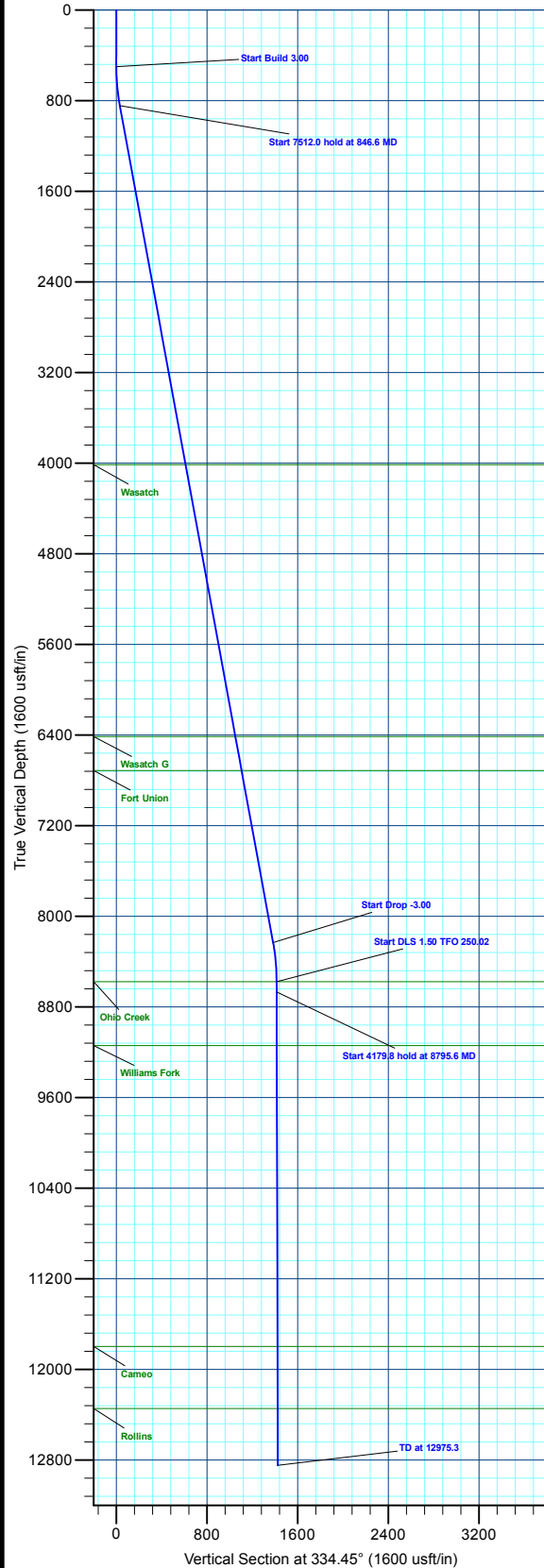
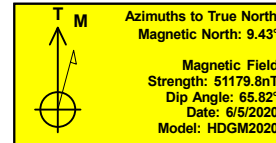
MD	Inc	Azi	TVD	+N/-S	+E/-W	Dleg	TFace	VSec	Annotation
0.0	0.00	0.00	0.0	0.0	0.0	0.00	0.00	0.0	
500.0	0.00	0.00	500.0	0.0	0.0	0.00	0.00	0.0	Start Build 3.00
846.6	10.40	338.47	844.7	29.2	-11.5	3.00	338.47	31.3	Start 7512.0 hold at 846.6 MD
8358.6	10.40	338.47	8233.3	1290.3	-509.0	0.00	0.00	1383.7	Start Drop -3.00
8705.1	0.00	0.00	8578.0	1319.5	-520.5	3.00	180.00	1415.0	Start DLS 1.50 TFO 250.02
8795.6	1.36	250.02	8668.4	1319.1	-521.5	1.50	250.02	1415.1	Start 4179.8 hold at 8795.6 MD
12975.3	1.36	250.02	12847.0	1285.3	-614.5	0.00	0.00	1424.7	TD at 12975.3

## DESIGN TARGET DETAILS

Name	TVD	+N/-S	+E/-W	Northing	Easting	Latitude	Longitude
13B-13 - OHCR	8578.0	1319.5	-520.5	14430696.28	2451465.83	39.702326	-108.116706
13B-13 - PBHL	12847.0	1285.3	-614.5	14430659.10	2451373.00	39.702233	-108.117040

## WELL DETAILS: ELU O13 FED 13B-13 496

		Ground Level : 8118.0					
+N/-S	+E/-W	Northing	Easting	Latitude	Longitude		
0.0	0.0	14429394.20	2452028.50	39.698705	-108.114857	13B-13	



Plan: Design #4 (ELU O13 FED 13B-13 496/Wellbore #1)

Created By: Will Jircik

Date: 11:54, February 28 2023



## **Caerus Oil & Gas**

**Rio Blanco County, CO**

**ELU O13 496 Pad**

**ELU O13 FED 13B-13 496 - Slot 13B-13**

**Wellbore #1**

**Plan: Design #4**

## **KLX Well Planning Report**

**27 February, 2023**



<b>Database:</b>	EDM 5000.1 Single User Db	<b>Local Co-ordinate Reference:</b>	Well ELU O13 FED 13B-13 496 - Slot 13B-13
<b>Company:</b>	Caerus Oil & Gas	<b>TVD Reference:</b>	RKB @ 8143.0usft (25')
<b>Project:</b>	Rio Blanco County, CO	<b>MD Reference:</b>	RKB @ 8143.0usft (25')
<b>Site:</b>	ELU O13 496 Pad	<b>North Reference:</b>	True
<b>Well:</b>	ELU O13 FED 13B-13 496	<b>Survey Calculation Method:</b>	Minimum Curvature
<b>Wellbore:</b>	Wellbore #1		
<b>Design:</b>	Design #4		

<b>Project</b>	Rio Blanco County, CO		
<b>Map System:</b>	Universal Transverse Mercator (US Survey Fee	<b>System Datum:</b>	Mean Sea Level
<b>Geo Datum:</b>	NAD 1927 - Western US		
<b>Map Zone:</b>	Zone 12N (114 W to 108 W)		

Site		ELU O13 496 Pad				
Site Position:		Northing:	14,429,398.00 usft	Latitude:	39.698712	
From:	Map	Easting:	2,452,071.40 usft	Longitude:	-108.114705	
Position Uncertainty:		0.0 usft	Slot Radius:	13-3/16 "	Grid Convergence:	1.84 °

Well	ELU O13 FED 13B-13 496 - Slot 13B-13					
Well Position	+N/-S	-2.4 usft	Northing:	14,429,394.20 usft	Latitude:	39.698705
	+E/-W	-43.0 usft	Easting:	2,452,028.50 usft	Longitude:	-108.114858
Position Uncertainty		0.0 usft	Wellhead Elevation:		Ground Level:	8,118.0 usft

<b>Wellbore</b>	Wellbore #1				
<b>Magnetics</b>	<b>Model Name</b>	<b>Sample Date</b>	<b>Declination (°)</b>	<b>Dip Angle (°)</b>	<b>Field Strength (nT)</b>
	HDGM2020	6/5/2020	9.43	65.82	51,179.80000000

<b>Design</b>	Design #4				
<b>Audit Notes:</b>					
<b>Version:</b>	<b>Phase:</b>	PLAN	<b>Tie On Depth:</b>	0.0	
<b>Vertical Section:</b>	<b>Depth From (TVD) (usft)</b>	<b>+N/-S (usft)</b>	<b>+E/-W (usft)</b>	<b>Direction (°)</b>	
	0.0	0.0	0.0	334.45	

Plan Sections										
Measured Depth (usft)	Inclination (°)	Azimuth (°)	Vertical Depth (usft)	+N/-S (usft)	+E/-W (usft)	Dogleg Rate (°/100usft)	Build Rate (°/100usft)	Turn Rate (°/100usft)	TFO (°)	Target
0.0	0.00	0.00	0.0	0.0	0.0	0.00	0.00	0.00	0.00	
500.0	0.00	0.00	500.0	0.0	0.0	0.00	0.00	0.00	0.00	
846.6	10.40	338.47	844.7	29.2	-11.5	3.00	3.00	0.00	338.47	
8,358.6	10.40	338.47	8,233.3	1,290.3	-509.0	0.00	0.00	0.00	0.00	
8,705.1	0.00	0.00	8,578.0	1,319.5	-520.5	3.00	-3.00	0.00	180.00	13B-13 - OHCR
8,795.6	1.36	250.02	8,668.4	1,319.1	-521.5	1.50	1.50	-121.64	250.02	
12,975.3	1.36	250.02	12,847.0	1,285.3	-614.5	0.00	0.00	0.00	0.00	13B-13 - PBHL

<b>Database:</b>	EDM 5000.1 Single User Db	<b>Local Co-ordinate Reference:</b>	Well ELU O13 FED 13B-13 496 - Slot 13B-13
<b>Company:</b>	Caerus Oil & Gas	<b>TVD Reference:</b>	RKB @ 8143.0usft (25')
<b>Project:</b>	Rio Blanco County, CO	<b>MD Reference:</b>	RKB @ 8143.0usft (25')
<b>Site:</b>	ELU O13 496 Pad	<b>North Reference:</b>	True
<b>Well:</b>	ELU O13 FED 13B-13 496	<b>Survey Calculation Method:</b>	Minimum Curvature
<b>Wellbore:</b>	Wellbore #1		
<b>Design:</b>	Design #4		

Planned Survey									
Measured Depth (usft)	Inclination (°)	Azimuth (°)	Vertical Depth (usft)	+N/-S (usft)	+E/-W (usft)	Vertical Section (usft)	Dogleg Rate (°/100usft)	Build Rate (°/100usft)	Turn Rate (°/100usft)
0.0	0.00	0.00	0.0	0.0	0.0	0.0	0.00	0.00	0.00
100.0	0.00	0.00	100.0	0.0	0.0	0.0	0.00	0.00	0.00
200.0	0.00	0.00	200.0	0.0	0.0	0.0	0.00	0.00	0.00
300.0	0.00	0.00	300.0	0.0	0.0	0.0	0.00	0.00	0.00
400.0	0.00	0.00	400.0	0.0	0.0	0.0	0.00	0.00	0.00
Start Build 3.00									
500.0	0.00	0.00	500.0	0.0	0.0	0.0	0.00	0.00	0.00
600.0	3.00	338.47	600.0	2.4	-1.0	2.6	3.00	3.00	0.00
700.0	6.00	338.47	699.6	9.7	-3.8	10.4	3.00	3.00	0.00
800.0	9.00	338.47	798.8	21.9	-8.6	23.5	3.00	3.00	0.00
Start 7512.0 hold at 846.6 MD									
846.6	10.40	338.47	844.7	29.2	-11.5	31.3	3.00	3.00	0.00
900.0	10.40	338.47	897.2	38.1	-15.0	40.9	0.00	0.00	0.00
1,000.0	10.40	338.47	995.6	54.9	-21.7	58.9	0.00	0.00	0.00
1,100.0	10.40	338.47	1,093.9	71.7	-28.3	76.9	0.00	0.00	0.00
1,200.0	10.40	338.47	1,192.3	88.5	-34.9	94.9	0.00	0.00	0.00
1,300.0	10.40	338.47	1,290.7	105.3	-41.5	112.9	0.00	0.00	0.00
1,400.0	10.40	338.47	1,389.0	122.1	-48.2	130.9	0.00	0.00	0.00
1,500.0	10.40	338.47	1,487.4	138.9	-54.8	148.9	0.00	0.00	0.00
1,600.0	10.40	338.47	1,585.7	155.7	-61.4	166.9	0.00	0.00	0.00
1,700.0	10.40	338.47	1,684.1	172.5	-68.0	184.9	0.00	0.00	0.00
1,800.0	10.40	338.47	1,782.4	189.2	-74.6	202.9	0.00	0.00	0.00
1,900.0	10.40	338.47	1,880.8	206.0	-81.3	220.9	0.00	0.00	0.00
2,000.0	10.40	338.47	1,979.2	222.8	-87.9	238.9	0.00	0.00	0.00
2,100.0	10.40	338.47	2,077.5	239.6	-94.5	256.9	0.00	0.00	0.00
2,200.0	10.40	338.47	2,175.9	256.4	-101.1	274.9	0.00	0.00	0.00
2,300.0	10.40	338.47	2,274.2	273.2	-107.8	292.9	0.00	0.00	0.00
2,400.0	10.40	338.47	2,372.6	290.0	-114.4	310.9	0.00	0.00	0.00
2,500.0	10.40	338.47	2,471.0	306.8	-121.0	329.0	0.00	0.00	0.00
2,600.0	10.40	338.47	2,569.3	323.5	-127.6	347.0	0.00	0.00	0.00
2,700.0	10.40	338.47	2,667.7	340.3	-134.2	365.0	0.00	0.00	0.00
2,800.0	10.40	338.47	2,766.0	357.1	-140.9	383.0	0.00	0.00	0.00
2,900.0	10.40	338.47	2,864.4	373.9	-147.5	401.0	0.00	0.00	0.00
3,000.0	10.40	338.47	2,962.7	390.7	-154.1	419.0	0.00	0.00	0.00
3,100.0	10.40	338.47	3,061.1	407.5	-160.7	437.0	0.00	0.00	0.00
3,200.0	10.40	338.47	3,159.5	424.3	-167.4	455.0	0.00	0.00	0.00
3,300.0	10.40	338.47	3,257.8	441.1	-174.0	473.0	0.00	0.00	0.00
3,400.0	10.40	338.47	3,356.2	457.9	-180.6	491.0	0.00	0.00	0.00
3,500.0	10.40	338.47	3,454.5	474.6	-187.2	509.0	0.00	0.00	0.00
3,600.0	10.40	338.47	3,552.9	491.4	-193.8	527.0	0.00	0.00	0.00
3,700.0	10.40	338.47	3,651.2	508.2	-200.5	545.0	0.00	0.00	0.00
3,800.0	10.40	338.47	3,749.6	525.0	-207.1	563.0	0.00	0.00	0.00
3,900.0	10.40	338.47	3,848.0	541.8	-213.7	581.0	0.00	0.00	0.00
4,000.0	10.40	338.47	3,946.3	558.6	-220.3	599.0	0.00	0.00	0.00
Wasatch									
4,068.8	10.40	338.47	4,014.0	570.1	-224.9	611.4	0.00	0.00	0.00
4,100.0	10.40	338.47	4,044.7	575.4	-227.0	617.0	0.00	0.00	0.00
4,200.0	10.40	338.47	4,143.0	592.2	-233.6	635.0	0.00	0.00	0.00
4,300.0	10.40	338.47	4,241.4	609.0	-240.2	653.0	0.00	0.00	0.00
4,400.0	10.40	338.47	4,339.8	625.7	-246.8	671.0	0.00	0.00	0.00
4,500.0	10.40	338.47	4,438.1	642.5	-253.4	689.0	0.00	0.00	0.00
4,600.0	10.40	338.47	4,536.5	659.3	-260.1	707.0	0.00	0.00	0.00
4,700.0	10.40	338.47	4,634.8	676.1	-266.7	725.0	0.00	0.00	0.00

<b>Database:</b>	EDM 5000.1 Single User Db	<b>Local Co-ordinate Reference:</b>	Well ELU O13 FED 13B-13 496 - Slot 13B-13
<b>Company:</b>	Caerus Oil & Gas	<b>TVD Reference:</b>	RKB @ 8143.0usft (25')
<b>Project:</b>	Rio Blanco County, CO	<b>MD Reference:</b>	RKB @ 8143.0usft (25')
<b>Site:</b>	ELU O13 496 Pad	<b>North Reference:</b>	True
<b>Well:</b>	ELU O13 FED 13B-13 496	<b>Survey Calculation Method:</b>	Minimum Curvature
<b>Wellbore:</b>	Wellbore #1		
<b>Design:</b>	Design #4		

Planned Survey									
Measured Depth (usft)	Inclination (°)	Azimuth (°)	Vertical Depth (usft)	+N/-S (usft)	+E/-W (usft)	Vertical Section (usft)	Dogleg Rate (°/100usft)	Build Rate (°/100usft)	Turn Rate (°/100usft)
4,800.0	10.40	338.47	4,733.2	692.9	-273.3	743.0	0.00	0.00	0.00
4,900.0	10.40	338.47	4,831.5	709.7	-279.9	761.0	0.00	0.00	0.00
5,000.0	10.40	338.47	4,929.9	726.5	-286.6	779.0	0.00	0.00	0.00
5,100.0	10.40	338.47	5,028.3	743.3	-293.2	797.0	0.00	0.00	0.00
5,200.0	10.40	338.47	5,126.6	760.1	-299.8	815.0	0.00	0.00	0.00
5,300.0	10.40	338.47	5,225.0	776.8	-306.4	833.0	0.00	0.00	0.00
5,400.0	10.40	338.47	5,323.3	793.6	-313.0	851.0	0.00	0.00	0.00
5,500.0	10.40	338.47	5,421.7	810.4	-319.7	869.0	0.00	0.00	0.00
5,600.0	10.40	338.47	5,520.0	827.2	-326.3	887.0	0.00	0.00	0.00
5,700.0	10.40	338.47	5,618.4	844.0	-332.9	905.0	0.00	0.00	0.00
5,800.0	10.40	338.47	5,716.8	860.8	-339.5	923.1	0.00	0.00	0.00
5,900.0	10.40	338.47	5,815.1	877.6	-346.2	941.1	0.00	0.00	0.00
6,000.0	10.40	338.47	5,913.5	894.4	-352.8	959.1	0.00	0.00	0.00
6,100.0	10.40	338.47	6,011.8	911.2	-359.4	977.1	0.00	0.00	0.00
6,200.0	10.40	338.47	6,110.2	927.9	-366.0	995.1	0.00	0.00	0.00
6,300.0	10.40	338.47	6,208.6	944.7	-372.6	1,013.1	0.00	0.00	0.00
6,400.0	10.40	338.47	6,306.9	961.5	-379.3	1,031.1	0.00	0.00	0.00
6,500.0	10.40	338.47	6,405.3	978.3	-385.9	1,049.1	0.00	0.00	0.00
<b>Wasatch G</b>									
6,508.9	10.40	338.47	6,414.0	979.8	-386.5	1,050.7	0.00	0.00	0.00
6,600.0	10.40	338.47	6,503.6	995.1	-392.5	1,067.1	0.00	0.00	0.00
6,700.0	10.40	338.47	6,602.0	1,011.9	-399.1	1,085.1	0.00	0.00	0.00
6,800.0	10.40	338.47	6,700.3	1,028.7	-405.8	1,103.1	0.00	0.00	0.00
<b>Fort Union</b>									
6,813.9	10.40	338.47	6,714.0	1,031.0	-406.7	1,105.6	0.00	0.00	0.00
6,900.0	10.40	338.47	6,798.7	1,045.5	-412.4	1,121.1	0.00	0.00	0.00
7,000.0	10.40	338.47	6,897.1	1,062.3	-419.0	1,139.1	0.00	0.00	0.00
7,100.0	10.40	338.47	6,995.4	1,079.0	-425.6	1,157.1	0.00	0.00	0.00
7,200.0	10.40	338.47	7,093.8	1,095.8	-432.3	1,175.1	0.00	0.00	0.00
7,300.0	10.40	338.47	7,192.1	1,112.6	-438.9	1,193.1	0.00	0.00	0.00
7,400.0	10.40	338.47	7,290.5	1,129.4	-445.5	1,211.1	0.00	0.00	0.00
7,500.0	10.40	338.47	7,388.8	1,146.2	-452.1	1,229.1	0.00	0.00	0.00
7,600.0	10.40	338.47	7,487.2	1,163.0	-458.7	1,247.1	0.00	0.00	0.00
7,700.0	10.40	338.47	7,585.6	1,179.8	-465.4	1,265.1	0.00	0.00	0.00
7,800.0	10.40	338.47	7,683.9	1,196.6	-472.0	1,283.1	0.00	0.00	0.00
7,900.0	10.40	338.47	7,782.3	1,213.4	-478.6	1,301.1	0.00	0.00	0.00
8,000.0	10.40	338.47	7,880.6	1,230.1	-485.2	1,319.1	0.00	0.00	0.00
8,100.0	10.40	338.47	7,979.0	1,246.9	-491.9	1,337.1	0.00	0.00	0.00
8,200.0	10.40	338.47	8,077.4	1,263.7	-498.5	1,355.1	0.00	0.00	0.00
8,300.0	10.40	338.47	8,175.7	1,280.5	-505.1	1,373.1	0.00	0.00	0.00
<b>Start Drop -3.00</b>									
8,358.6	10.40	338.47	8,233.3	1,290.3	-509.0	1,383.7	0.00	0.00	0.00
8,400.0	9.15	338.47	8,274.1	1,296.9	-511.6	1,390.7	3.00	-3.00	0.00
8,500.0	6.15	338.47	8,373.2	1,309.3	-516.4	1,404.0	3.00	-3.00	0.00
8,600.0	3.15	338.47	8,472.9	1,316.8	-519.4	1,412.1	3.00	-3.00	0.00
<b>Start DLS 1.50 TFO 250.02 - Ohio Creek</b>									
8,705.1	0.00	0.00	8,578.0	1,319.5	-520.5	1,415.0	3.00	-3.00	0.00
<b>Start 4179.8 hold at 8795.6 MD</b>									
8,795.6	1.36	250.02	8,668.4	1,319.1	-521.5	1,415.1	1.50	1.50	0.00
8,800.0	1.36	250.02	8,672.8	1,319.1	-521.6	1,415.1	0.00	0.00	0.00
8,900.0	1.36	250.02	8,772.8	1,318.3	-523.8	1,415.3	0.00	0.00	0.00
9,000.0	1.36	250.02	8,872.8	1,317.5	-526.0	1,415.5	0.00	0.00	0.00
9,100.0	1.36	250.02	8,972.8	1,316.7	-528.3	1,415.8	0.00	0.00	0.00
9,200.0	1.36	250.02	9,072.7	1,315.9	-530.5	1,416.0	0.00	0.00	0.00

<b>Database:</b>	EDM 5000.1 Single User Db	<b>Local Co-ordinate Reference:</b>	Well ELU O13 FED 13B-13 496 - Slot 13B-13
<b>Company:</b>	Caerus Oil & Gas	<b>TVD Reference:</b>	RKB @ 8143.0usft (25')
<b>Project:</b>	Rio Blanco County, CO	<b>MD Reference:</b>	RKB @ 8143.0usft (25')
<b>Site:</b>	ELU O13 496 Pad	<b>North Reference:</b>	True
<b>Well:</b>	ELU O13 FED 13B-13 496	<b>Survey Calculation Method:</b>	Minimum Curvature
<b>Wellbore:</b>	Wellbore #1		
<b>Design:</b>	Design #4		

Planned Survey									
Measured Depth (usft)	Inclination (°)	Azimuth (°)	Vertical Depth (usft)	+N/-S (usft)	+E/-W (usft)	Vertical Section (usft)	Dogleg Rate (°/100usft)	Build Rate (°/100usft)	Turn Rate (°/100usft)
<b>Williams Fork</b>									
9,268.3	1.36	250.02	9,141.0	1,315.3	-532.0	1,416.1	0.00	0.00	0.00
9,300.0	1.36	250.02	9,172.7	1,315.1	-532.7	1,416.2	0.00	0.00	0.00
9,400.0	1.36	250.02	9,272.7	1,314.3	-534.9	1,416.4	0.00	0.00	0.00
9,500.0	1.36	250.02	9,372.6	1,313.4	-537.2	1,416.7	0.00	0.00	0.00
9,600.0	1.36	250.02	9,472.6	1,312.6	-539.4	1,416.9	0.00	0.00	0.00
9,700.0	1.36	250.02	9,572.6	1,311.8	-541.6	1,417.1	0.00	0.00	0.00
9,800.0	1.36	250.02	9,672.6	1,311.0	-543.8	1,417.4	0.00	0.00	0.00
9,900.0	1.36	250.02	9,772.5	1,310.2	-546.1	1,417.6	0.00	0.00	0.00
10,000.0	1.36	250.02	9,872.5	1,309.4	-548.3	1,417.8	0.00	0.00	0.00
10,100.0	1.36	250.02	9,972.5	1,308.6	-550.5	1,418.1	0.00	0.00	0.00
10,200.0	1.36	250.02	10,072.4	1,307.8	-552.7	1,418.3	0.00	0.00	0.00
10,300.0	1.36	250.02	10,172.4	1,307.0	-555.0	1,418.5	0.00	0.00	0.00
10,400.0	1.36	250.02	10,272.4	1,306.2	-557.2	1,418.7	0.00	0.00	0.00
10,500.0	1.36	250.02	10,372.4	1,305.4	-559.4	1,419.0	0.00	0.00	0.00
10,600.0	1.36	250.02	10,472.3	1,304.5	-561.6	1,419.2	0.00	0.00	0.00
10,700.0	1.36	250.02	10,572.3	1,303.7	-563.8	1,419.4	0.00	0.00	0.00
10,800.0	1.36	250.02	10,672.3	1,302.9	-566.1	1,419.7	0.00	0.00	0.00
10,900.0	1.36	250.02	10,772.3	1,302.1	-568.3	1,419.9	0.00	0.00	0.00
11,000.0	1.36	250.02	10,872.2	1,301.3	-570.5	1,420.1	0.00	0.00	0.00
11,100.0	1.36	250.02	10,972.2	1,300.5	-572.7	1,420.4	0.00	0.00	0.00
11,200.0	1.36	250.02	11,072.2	1,299.7	-575.0	1,420.6	0.00	0.00	0.00
11,300.0	1.36	250.02	11,172.1	1,298.9	-577.2	1,420.8	0.00	0.00	0.00
11,400.0	1.36	250.02	11,272.1	1,298.1	-579.4	1,421.0	0.00	0.00	0.00
11,500.0	1.36	250.02	11,372.1	1,297.3	-581.6	1,421.3	0.00	0.00	0.00
11,600.0	1.36	250.02	11,472.1	1,296.5	-583.9	1,421.5	0.00	0.00	0.00
11,700.0	1.36	250.02	11,572.0	1,295.7	-586.1	1,421.7	0.00	0.00	0.00
11,800.0	1.36	250.02	11,672.0	1,294.8	-588.3	1,422.0	0.00	0.00	0.00
11,900.0	1.36	250.02	11,772.0	1,294.0	-590.5	1,422.2	0.00	0.00	0.00
<b>Cameo</b>									
11,925.0	1.36	250.02	11,797.0	1,293.8	-591.1	1,422.2	0.00	0.00	0.00
12,000.0	1.36	250.02	11,871.9	1,293.2	-592.8	1,422.4	0.00	0.00	0.00
12,100.0	1.36	250.02	11,971.9	1,292.4	-595.0	1,422.6	0.00	0.00	0.00
12,200.0	1.36	250.02	12,071.9	1,291.6	-597.2	1,422.9	0.00	0.00	0.00
12,300.0	1.36	250.02	12,171.9	1,290.8	-599.4	1,423.1	0.00	0.00	0.00
12,400.0	1.36	250.02	12,271.8	1,290.0	-601.7	1,423.3	0.00	0.00	0.00
<b>Rollins</b>									
12,475.2	1.36	250.02	12,347.0	1,289.4	-603.3	1,423.5	0.00	0.00	0.00
12,500.0	1.36	250.02	12,371.8	1,289.2	-603.9	1,423.6	0.00	0.00	0.00
12,600.0	1.36	250.02	12,471.8	1,288.4	-606.1	1,423.8	0.00	0.00	0.00
12,700.0	1.36	250.02	12,571.7	1,287.6	-608.3	1,424.0	0.00	0.00	0.00
12,800.0	1.36	250.02	12,671.7	1,286.8	-610.6	1,424.3	0.00	0.00	0.00
12,900.0	1.36	250.02	12,771.7	1,285.9	-612.8	1,424.5	0.00	0.00	0.00
<b>TD at 12975.3</b>									
12,975.3	1.36	250.02	12,847.0	1,285.3	-614.5	1,424.7	0.00	0.00	0.00

<b>Database:</b>	EDM 5000.1 Single User Db	<b>Local Co-ordinate Reference:</b>	Well ELU O13 FED 13B-13 496 - Slot 13B-13
<b>Company:</b>	Caerus Oil & Gas	<b>TVD Reference:</b>	RKB @ 8143.0usft (25')
<b>Project:</b>	Rio Blanco County, CO	<b>MD Reference:</b>	RKB @ 8143.0usft (25')
<b>Site:</b>	ELU O13 496 Pad	<b>North Reference:</b>	True
<b>Well:</b>	ELU O13 FED 13B-13 496	<b>Survey Calculation Method:</b>	Minimum Curvature
<b>Wellbore:</b>	Wellbore #1		
<b>Design:</b>	Design #4		

#### Design Targets

##### Target Name

- hit/miss target	Dip Angle	Dip Dir.	TVD	+N/-S	+E/-W	Northing	Easting	Latitude	Longitude
- Shape	(°)	(°)	(usft)	(usft)	(usft)	(usft)	(usft)		
13B-13 - OHCR	0.00	0.00	8,578.0	1,319.5	-520.5	14,430,696.28	2,451,465.83	39.702326	-108.116707
- plan hits target center									
- Point									
13B-13 - PBHL	0.00	0.00	12,847.0	1,285.3	-614.5	14,430,659.10	2,451,373.00	39.702233	-108.117041
- plan hits target center									
- Ellipse (radii L100.0 W50.0 on 250.00 azi)									

#### Formations

Measured Depth	Vertical Depth	Name	Lithology	Dip	Dip Direction
(usft)	(usft)			(°)	(°)
4,068.8	4,014.0	Wasatch			
6,508.9	6,414.0	Wasatch G			
6,813.9	6,714.0	Fort Union			
8,705.1	8,578.0	Ohio Creek			
9,268.3	9,141.0	Williams Fork			
11,925.0	11,797.0	Cameo			
12,475.2	12,347.0	Rollins			

#### Plan Annotations

Measured Depth	Vertical Depth	Local Coordinates		Comment
(usft)	(usft)	+N/-S	+E/-W	
(usft)	(usft)	(usft)	(usft)	
500.0	500.0	0.0	0.0	Start Build 3.00
846.6	844.7	29.2	-11.5	Start 7512.0 hold at 846.6 MD
8,358.6	8,233.3	1,290.3	-509.0	Start Drop -3.00
8,705.1	8,578.0	1,319.5	-520.5	Start DLS 1.50 TFO 250.02
8,795.6	8,668.4	1,319.1	-521.5	Start 4179.8 hold at 8795.6 MD
12,975.3	12,847.0	1,285.3	-614.5	TD at 12975.3