

Project: Rio Blanco County, CO
 Site: ELU O13 496 Pad
 Well: ELU O13 FED 13A-13 496
 Wellbore: Wellbore #1
 Design: Design #4
 Latitude: 39.698708
 Longitude: -108.114794
 Ground Level: 8118.0
 RKB @ 8143.0usft (25')

PROJECT DETAILS: Rio Blanco County, CO

Geodetic System: Universal Transverse Mercator (US Survey Feet)
 Datum: NAD 1927 - Western US
 Ellipsoid: Clarke 1886
 Zone: Zone 12N (114 W to 108 W)
 System Datum: Mean Sea Level

REFERENCE INFORMATION

Vertical (TVD) Reference: RKB @ 8143.0usft (25')
 Section (VS) Reference: Slot - 13A-13(0.0N, 0.0E)
 Measured Depth Reference: RKB @ 8143.0usft (25')
 Calculation Method: Minimum Curvature

FORMATION TOP DETAILS

TVDPath	MDPath	Formation
4017.0	4092.5	Wasatch
6417.0	6548.3	Wasatch G
6717.0	6855.3	Fort Union
8594.0	8769.7	Ohio Creek
9143.0	9318.8	Williams Fork
11799.0	11975.6	Cameo
12349.0	12525.7	Rollins

SECTION DETAILS

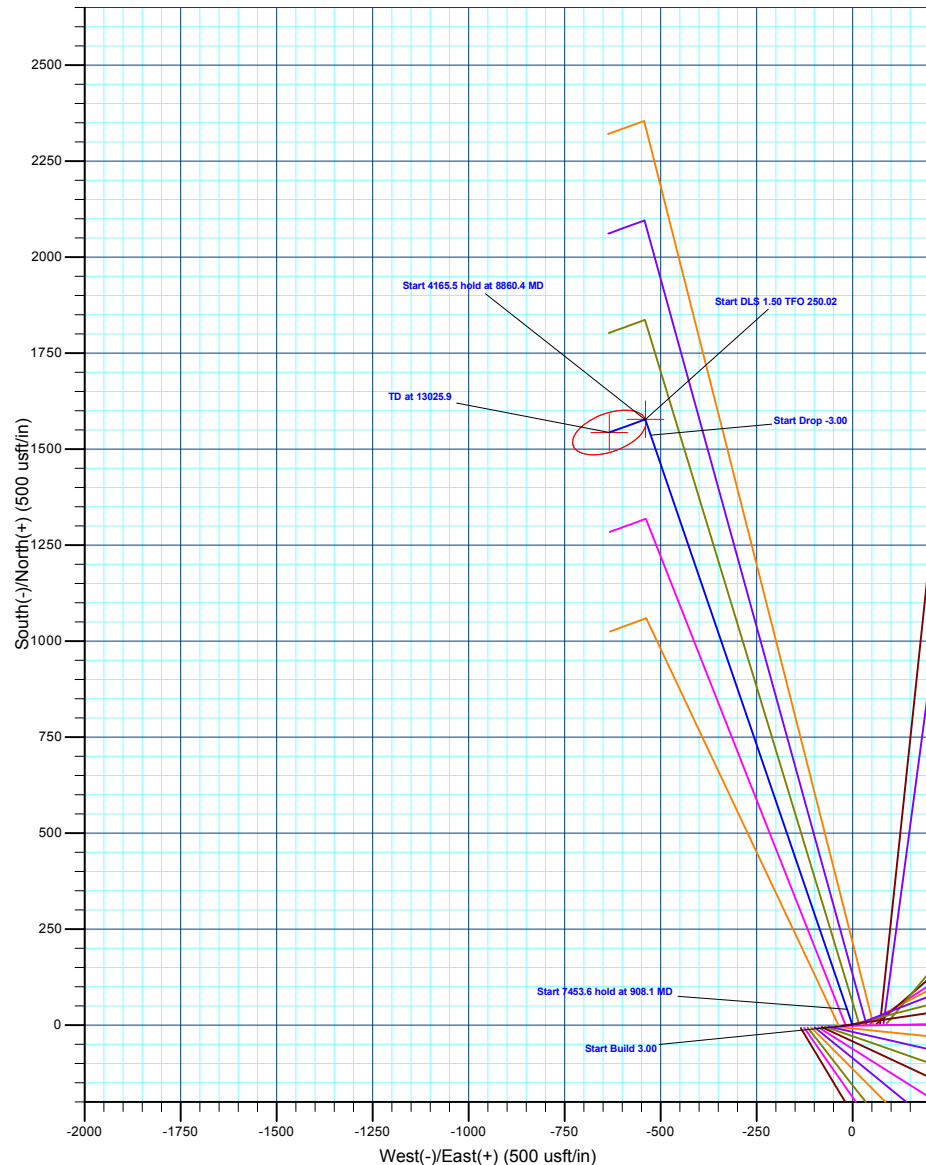
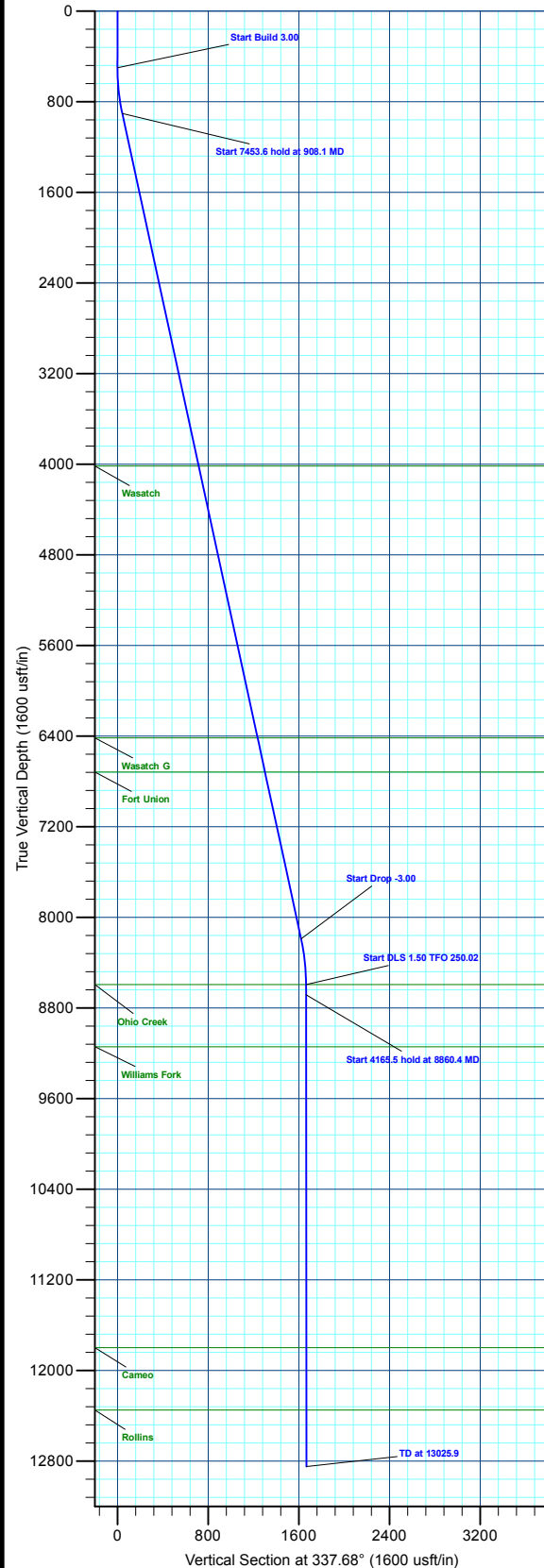
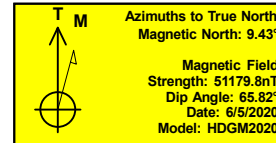
MD	Inc	Azi	TVD	+N/-S	+E/-W	Dleg	TFace	VSeet	Annotation
0.0	0.00	0.00	0.0	0.0	0.0	0.00	0.00	0.0	
500.0	0.00	0.00	500.0	0.0	0.0	0.00	0.00	0.0	Start Build 3.00
908.1	12.24	341.12	905.0	41.1	-14.1	3.00	341.12	43.3	Start 7453.6 hold at 908.1 MD
8361.6	12.24	341.12	8189.0	1536.5	-525.4	0.00	0.00	1620.9	Start Drop -3.00
8769.7	0.00	0.00	8594.0	1577.6	-539.5	3.00	180.00	1664.3	Start DLS 1.50 TFO 250.02
8860.4	1.36	250.02	8684.7	1577.2	-540.5	1.50	250.02	1664.3	Start 4165.5 hold at 8860.4 MD
13025.9	1.36	250.02	12649.0	1543.4	-633.5	0.00	0.00	1668.3	TD at 13025.9

DESIGN TARGET DETAILS

Name	TVD	+N/-S	+E/-W	Northing	Easting	Latitude	Longitude
13A-13 - OHCR	8594.0	1577.6	-539.5	14430955.18	2451456.43	39.703037	-108.116710
13A-13 - PBHL	12849.0	1543.4	-633.5	14430918.00	2451363.60	39.702944	-108.117044

WELL DETAILS: ELU O13 FED 13A-13 496

+N/-S	+E/-W	Ground Level : 8118.0	Latitude	Longitude
0.0	0.0	Northing 14429395.80 Easting 2452046.40	39.698708	-108.114794



Plan: Design #4 (ELU O13 FED 13A-13 496/Wellbore #1)

Created By: Will Jircik Date: 11:51, February 28 2023



Caerus Oil & Gas

Rio Blanco County, CO

ELU O13 496 Pad

ELU O13 FED 13A-13 496 - Slot 13A-13

Wellbore #1

Plan: Design #4

KLX Well Planning Report

27 February, 2023



Database:	EDM 5000.1 Single User Db	Local Co-ordinate Reference:	Well ELU O13 FED 13A-13 496 - Slot 13A-13
Company:	Caerus Oil & Gas	TVD Reference:	RKB @ 8143.0usft (25')
Project:	Rio Blanco County, CO	MD Reference:	RKB @ 8143.0usft (25')
Site:	ELU O13 496 Pad	North Reference:	True
Well:	ELU O13 FED 13A-13 496	Survey Calculation Method:	Minimum Curvature
Wellbore:	Wellbore #1		
Design:	Design #4		

Project	Rio Blanco County, CO		
Map System:	Universal Transverse Mercator (US Survey Fee	System Datum:	Mean Sea Level
Geo Datum:	NAD 1927 - Western US		
Map Zone:	Zone 12N (114 W to 108 W)		

Site	ELU O13 496 Pad				
Site Position:		Northing:	14,429,398.00 usft	Latitude:	39.698712
From:	Map	Easting:	2,452,071.40 usft	Longitude:	-108.114705
Position Uncertainty:	0.0 usft	Slot Radius:	13-3/16 "	Grid Convergence:	1.84 °

Well	ELU O13 FED 13A-13 496 - Slot 13A-13					
Well Position	+N/-S	-1.4 usft	Northing:	14,429,395.80 usft	Latitude:	39.698708
	+E/-W	-25.1 usft	Easting:	2,452,046.40 usft	Longitude:	-108.114794
Position Uncertainty		0.0 usft	Wellhead Elevation:		Ground Level:	8,118.0 usft

Wellbore	Wellbore #1				
Magnetics	Model Name	Sample Date	Declination (°)	Dip Angle (°)	Field Strength (nT)
	HDGM2020	6/5/2020	9.43	65.82	51,179.80000000

Design	Design #4			
Audit Notes:				
Version:	Phase:	PLAN	Tie On Depth:	0.0
Vertical Section:	Depth From (TVD) (usft)	+N/-S (usft)	+E/-W (usft)	Direction (°)
	0.0	0.0	0.0	337.68

Plan Sections										
Measured Depth (usft)	Inclination (°)	Azimuth (°)	Vertical Depth (usft)	+N/-S (usft)	+E/-W (usft)	Dogleg Rate (°/100usft)	Build Rate (°/100usft)	Turn Rate (°/100usft)	TFO (°)	Target
0.0	0.00	0.00	0.0	0.0	0.0	0.00	0.00	0.00	0.00	
500.0	0.00	0.00	500.0	0.0	0.0	0.00	0.00	0.00	0.00	
908.1	12.24	341.12	905.0	41.1	-14.1	3.00	3.00	0.00	341.12	
8,361.6	12.24	341.12	8,189.0	1,536.5	-525.4	0.00	0.00	0.00	0.00	
8,769.7	0.00	0.00	8,594.0	1,577.6	-539.5	3.00	-3.00	0.00	180.00	13A-13 - OHCR
8,860.4	1.36	250.02	8,684.7	1,577.2	-540.5	1.50	1.50	-121.23	250.02	
13,025.9	1.36	250.02	12,849.0	1,543.4	-633.5	0.00	0.00	0.00	0.00	13A-13 - PBHL

Database:	EDM 5000.1 Single User Db	Local Co-ordinate Reference:	Well ELU O13 FED 13A-13 496 - Slot 13A-13
Company:	Caerus Oil & Gas	TVD Reference:	RKB @ 8143.0usft (25')
Project:	Rio Blanco County, CO	MD Reference:	RKB @ 8143.0usft (25')
Site:	ELU O13 496 Pad	North Reference:	True
Well:	ELU O13 FED 13A-13 496	Survey Calculation Method:	Minimum Curvature
Wellbore:	Wellbore #1		
Design:	Design #4		

Planned Survey									
Measured Depth (usft)	Inclination (°)	Azimuth (°)	Vertical Depth (usft)	+N/-S (usft)	+E/-W (usft)	Vertical Section (usft)	Dogleg Rate (°/100usft)	Build Rate (°/100usft)	Turn Rate (°/100usft)
0.0	0.00	0.00	0.0	0.0	0.0	0.0	0.00	0.00	0.00
100.0	0.00	0.00	100.0	0.0	0.0	0.0	0.00	0.00	0.00
200.0	0.00	0.00	200.0	0.0	0.0	0.0	0.00	0.00	0.00
300.0	0.00	0.00	300.0	0.0	0.0	0.0	0.00	0.00	0.00
400.0	0.00	0.00	400.0	0.0	0.0	0.0	0.00	0.00	0.00
Start Build 3.00									
500.0	0.00	0.00	500.0	0.0	0.0	0.0	0.00	0.00	0.00
600.0	3.00	341.12	600.0	2.5	-0.8	2.6	3.00	3.00	0.00
700.0	6.00	341.12	699.6	9.9	-3.4	10.4	3.00	3.00	0.00
800.0	9.00	341.12	798.8	22.2	-7.6	23.5	3.00	3.00	0.00
Start 7453.6 hold at 908.1 MD									
908.1	12.24	341.12	905.0	41.1	-14.1	43.3	3.00	3.00	0.00
1,000.0	12.24	341.12	994.8	59.5	-20.4	62.8	0.00	0.00	0.00
1,100.0	12.24	341.12	1,092.5	79.6	-27.2	84.0	0.00	0.00	0.00
1,200.0	12.24	341.12	1,190.3	99.7	-34.1	105.1	0.00	0.00	0.00
1,300.0	12.24	341.12	1,288.0	119.7	-40.9	126.3	0.00	0.00	0.00
1,400.0	12.24	341.12	1,385.7	139.8	-47.8	147.5	0.00	0.00	0.00
1,500.0	12.24	341.12	1,483.4	159.8	-54.7	168.6	0.00	0.00	0.00
1,600.0	12.24	341.12	1,581.2	179.9	-61.5	189.8	0.00	0.00	0.00
1,700.0	12.24	341.12	1,678.9	200.0	-68.4	211.0	0.00	0.00	0.00
1,800.0	12.24	341.12	1,776.6	220.0	-75.2	232.1	0.00	0.00	0.00
1,900.0	12.24	341.12	1,874.3	240.1	-82.1	253.3	0.00	0.00	0.00
2,000.0	12.24	341.12	1,972.1	260.2	-89.0	274.5	0.00	0.00	0.00
2,100.0	12.24	341.12	2,069.8	280.2	-95.8	295.6	0.00	0.00	0.00
2,200.0	12.24	341.12	2,167.5	300.3	-102.7	316.8	0.00	0.00	0.00
2,300.0	12.24	341.12	2,265.3	320.4	-109.6	338.0	0.00	0.00	0.00
2,400.0	12.24	341.12	2,363.0	340.4	-116.4	359.1	0.00	0.00	0.00
2,500.0	12.24	341.12	2,460.7	360.5	-123.3	380.3	0.00	0.00	0.00
2,600.0	12.24	341.12	2,558.4	380.5	-130.1	401.5	0.00	0.00	0.00
2,700.0	12.24	341.12	2,656.2	400.6	-137.0	422.6	0.00	0.00	0.00
2,800.0	12.24	341.12	2,753.9	420.7	-143.9	443.8	0.00	0.00	0.00
2,900.0	12.24	341.12	2,851.6	440.7	-150.7	464.9	0.00	0.00	0.00
3,000.0	12.24	341.12	2,949.3	460.8	-157.6	486.1	0.00	0.00	0.00
3,100.0	12.24	341.12	3,047.1	480.9	-164.4	507.3	0.00	0.00	0.00
3,200.0	12.24	341.12	3,144.8	500.9	-171.3	528.4	0.00	0.00	0.00
3,300.0	12.24	341.12	3,242.5	521.0	-178.2	549.6	0.00	0.00	0.00
3,400.0	12.24	341.12	3,340.2	541.0	-185.0	570.8	0.00	0.00	0.00
3,500.0	12.24	341.12	3,438.0	561.1	-191.9	591.9	0.00	0.00	0.00
3,600.0	12.24	341.12	3,535.7	581.2	-198.7	613.1	0.00	0.00	0.00
3,700.0	12.24	341.12	3,633.4	601.2	-205.6	634.3	0.00	0.00	0.00
3,800.0	12.24	341.12	3,731.1	621.3	-212.5	655.4	0.00	0.00	0.00
3,900.0	12.24	341.12	3,828.9	641.4	-219.3	676.6	0.00	0.00	0.00
4,000.0	12.24	341.12	3,926.6	661.4	-226.2	697.8	0.00	0.00	0.00
Wasatch									
4,092.5	12.24	341.12	4,017.0	680.0	-232.5	717.3	0.00	0.00	0.00
4,100.0	12.24	341.12	4,024.3	681.5	-233.0	718.9	0.00	0.00	0.00
4,200.0	12.24	341.12	4,122.1	701.5	-239.9	740.1	0.00	0.00	0.00
4,300.0	12.24	341.12	4,219.8	721.6	-246.8	761.3	0.00	0.00	0.00
4,400.0	12.24	341.12	4,317.5	741.7	-253.6	782.4	0.00	0.00	0.00
4,500.0	12.24	341.12	4,415.2	761.7	-260.5	803.6	0.00	0.00	0.00
4,600.0	12.24	341.12	4,513.0	781.8	-267.4	824.8	0.00	0.00	0.00
4,700.0	12.24	341.12	4,610.7	801.9	-274.2	845.9	0.00	0.00	0.00
4,800.0	12.24	341.12	4,708.4	821.9	-281.1	867.1	0.00	0.00	0.00

Database:	EDM 5000.1 Single User Db	Local Co-ordinate Reference:	Well ELU O13 FED 13A-13 496 - Slot 13A-13
Company:	Caerus Oil & Gas	TVD Reference:	RKB @ 8143.0usft (25')
Project:	Rio Blanco County, CO	MD Reference:	RKB @ 8143.0usft (25')
Site:	ELU O13 496 Pad	North Reference:	True
Well:	ELU O13 FED 13A-13 496	Survey Calculation Method:	Minimum Curvature
Wellbore:	Wellbore #1		
Design:	Design #4		

Planned Survey									
Measured Depth (usft)	Inclination (°)	Azimuth (°)	Vertical Depth (usft)	+N/-S (usft)	+E/-W (usft)	Vertical Section (usft)	Dogleg Rate (°/100usft)	Build Rate (°/100usft)	Turn Rate (°/100usft)
4,900.0	12.24	341.12	4,806.1	842.0	-287.9	888.3	0.00	0.00	0.00
5,000.0	12.24	341.12	4,903.9	862.0	-294.8	909.4	0.00	0.00	0.00
5,100.0	12.24	341.12	5,001.6	882.1	-301.7	930.6	0.00	0.00	0.00
5,200.0	12.24	341.12	5,099.3	902.2	-308.5	951.7	0.00	0.00	0.00
5,300.0	12.24	341.12	5,197.0	922.2	-315.4	972.9	0.00	0.00	0.00
5,400.0	12.24	341.12	5,294.8	942.3	-322.2	994.1	0.00	0.00	0.00
5,500.0	12.24	341.12	5,392.5	962.4	-329.1	1,015.2	0.00	0.00	0.00
5,600.0	12.24	341.12	5,490.2	982.4	-336.0	1,036.4	0.00	0.00	0.00
5,700.0	12.24	341.12	5,587.9	1,002.5	-342.8	1,057.6	0.00	0.00	0.00
5,800.0	12.24	341.12	5,685.7	1,022.5	-349.7	1,078.7	0.00	0.00	0.00
5,900.0	12.24	341.12	5,783.4	1,042.6	-356.5	1,099.9	0.00	0.00	0.00
6,000.0	12.24	341.12	5,881.1	1,062.7	-363.4	1,121.1	0.00	0.00	0.00
6,100.0	12.24	341.12	5,978.9	1,082.7	-370.3	1,142.2	0.00	0.00	0.00
6,200.0	12.24	341.12	6,076.6	1,102.8	-377.1	1,163.4	0.00	0.00	0.00
6,300.0	12.24	341.12	6,174.3	1,122.9	-384.0	1,184.6	0.00	0.00	0.00
6,400.0	12.24	341.12	6,272.0	1,142.9	-390.9	1,205.7	0.00	0.00	0.00
6,500.0	12.24	341.12	6,369.8	1,163.0	-397.7	1,226.9	0.00	0.00	0.00
Wasatch G									
6,548.3	12.24	341.12	6,417.0	1,172.7	-401.0	1,237.1	0.00	0.00	0.00
6,600.0	12.24	341.12	6,467.5	1,183.0	-404.6	1,248.1	0.00	0.00	0.00
6,700.0	12.24	341.12	6,565.2	1,203.1	-411.4	1,269.2	0.00	0.00	0.00
6,800.0	12.24	341.12	6,662.9	1,223.2	-418.3	1,290.4	0.00	0.00	0.00
Fort Union									
6,855.3	12.24	341.12	6,717.0	1,234.3	-422.1	1,302.1	0.00	0.00	0.00
6,900.0	12.24	341.12	6,760.7	1,243.2	-425.2	1,311.6	0.00	0.00	0.00
7,000.0	12.24	341.12	6,858.4	1,263.3	-432.0	1,332.7	0.00	0.00	0.00
7,100.0	12.24	341.12	6,956.1	1,283.4	-438.9	1,353.9	0.00	0.00	0.00
7,200.0	12.24	341.12	7,053.8	1,303.4	-445.7	1,375.0	0.00	0.00	0.00
7,300.0	12.24	341.12	7,151.6	1,323.5	-452.6	1,396.2	0.00	0.00	0.00
7,400.0	12.24	341.12	7,249.3	1,343.5	-459.5	1,417.4	0.00	0.00	0.00
7,500.0	12.24	341.12	7,347.0	1,363.6	-466.3	1,438.5	0.00	0.00	0.00
7,600.0	12.24	341.12	7,444.7	1,383.7	-473.2	1,459.7	0.00	0.00	0.00
7,700.0	12.24	341.12	7,542.5	1,403.7	-480.0	1,480.9	0.00	0.00	0.00
7,800.0	12.24	341.12	7,640.2	1,423.8	-486.9	1,502.0	0.00	0.00	0.00
7,900.0	12.24	341.12	7,737.9	1,443.9	-493.8	1,523.2	0.00	0.00	0.00
8,000.0	12.24	341.12	7,835.6	1,463.9	-500.6	1,544.4	0.00	0.00	0.00
8,100.0	12.24	341.12	7,933.4	1,484.0	-507.5	1,565.5	0.00	0.00	0.00
8,200.0	12.24	341.12	8,031.1	1,504.0	-514.3	1,586.7	0.00	0.00	0.00
8,300.0	12.24	341.12	8,128.8	1,524.1	-521.2	1,607.9	0.00	0.00	0.00
Start Drop -3.00									
8,361.6	12.24	341.12	8,189.0	1,536.5	-525.4	1,620.9	0.00	0.00	0.00
8,400.0	11.09	341.12	8,226.6	1,543.8	-527.9	1,628.7	3.00	-3.00	0.00
8,500.0	8.09	341.12	8,325.2	1,559.6	-533.3	1,645.3	3.00	-3.00	0.00
8,600.0	5.09	341.12	8,424.6	1,570.4	-537.0	1,656.7	3.00	-3.00	0.00
8,700.0	2.09	341.12	8,524.3	1,576.4	-539.1	1,663.0	3.00	-3.00	0.00
Start DLS 1.50 TFO 250.02 - Ohio Creek									
8,769.7	0.00	0.00	8,594.0	1,577.6	-539.5	1,664.3	3.00	-3.00	0.00
8,800.0	0.45	250.02	8,624.3	1,577.5	-539.6	1,664.3	1.50	1.50	0.00
Start 4165.5 hold at 8860.4 MD									
8,860.4	1.36	250.02	8,684.7	1,577.2	-540.5	1,664.3	1.50	1.50	0.00
8,900.0	1.36	250.02	8,724.3	1,576.9	-541.4	1,664.3	0.00	0.00	0.00
9,000.0	1.36	250.02	8,824.3	1,576.1	-543.6	1,664.4	0.00	0.00	0.00
9,100.0	1.36	250.02	8,924.3	1,575.2	-545.8	1,664.5	0.00	0.00	0.00
9,200.0	1.36	250.02	9,024.2	1,574.4	-548.1	1,664.6	0.00	0.00	0.00

Database:	EDM 5000.1 Single User Db	Local Co-ordinate Reference:	Well ELU O13 FED 13A-13 496 - Slot 13A-13
Company:	Caerus Oil & Gas	TVD Reference:	RKB @ 8143.0usft (25')
Project:	Rio Blanco County, CO	MD Reference:	RKB @ 8143.0usft (25')
Site:	ELU O13 496 Pad	North Reference:	True
Well:	ELU O13 FED 13A-13 496	Survey Calculation Method:	Minimum Curvature
Wellbore:	Wellbore #1		
Design:	Design #4		

Planned Survey									
Measured Depth (usft)	Inclination (°)	Azimuth (°)	Vertical Depth (usft)	+N/-S (usft)	+E/-W (usft)	Vertical Section (usft)	Dogleg Rate (°/100usft)	Build Rate (°/100usft)	Turn Rate (°/100usft)
9,300.0	1.36	250.02	9,124.2	1,573.6	-550.3	1,664.7	0.00	0.00	0.00
Williams Fork									
9,318.8	1.36	250.02	9,143.0	1,573.5	-550.7	1,664.7	0.00	0.00	0.00
9,400.0	1.36	250.02	9,224.2	1,572.8	-552.5	1,664.8	0.00	0.00	0.00
9,500.0	1.36	250.02	9,324.1	1,572.0	-554.8	1,664.9	0.00	0.00	0.00
9,600.0	1.36	250.02	9,424.1	1,571.2	-557.0	1,665.0	0.00	0.00	0.00
9,700.0	1.36	250.02	9,524.1	1,570.4	-559.2	1,665.1	0.00	0.00	0.00
9,800.0	1.36	250.02	9,624.1	1,569.6	-561.5	1,665.2	0.00	0.00	0.00
9,900.0	1.36	250.02	9,724.0	1,568.8	-563.7	1,665.3	0.00	0.00	0.00
10,000.0	1.36	250.02	9,824.0	1,567.9	-565.9	1,665.4	0.00	0.00	0.00
10,100.0	1.36	250.02	9,924.0	1,567.1	-568.2	1,665.5	0.00	0.00	0.00
10,200.0	1.36	250.02	10,023.9	1,566.3	-570.4	1,665.6	0.00	0.00	0.00
10,300.0	1.36	250.02	10,123.9	1,565.5	-572.6	1,665.7	0.00	0.00	0.00
10,400.0	1.36	250.02	10,223.9	1,564.7	-574.9	1,665.8	0.00	0.00	0.00
10,500.0	1.36	250.02	10,323.9	1,563.9	-577.1	1,665.9	0.00	0.00	0.00
10,600.0	1.36	250.02	10,423.8	1,563.1	-579.3	1,666.0	0.00	0.00	0.00
10,700.0	1.36	250.02	10,523.8	1,562.3	-581.6	1,666.1	0.00	0.00	0.00
10,800.0	1.36	250.02	10,623.8	1,561.4	-583.8	1,666.2	0.00	0.00	0.00
10,900.0	1.36	250.02	10,723.7	1,560.6	-586.0	1,666.3	0.00	0.00	0.00
11,000.0	1.36	250.02	10,823.7	1,559.8	-588.3	1,666.4	0.00	0.00	0.00
11,100.0	1.36	250.02	10,923.7	1,559.0	-590.5	1,666.5	0.00	0.00	0.00
11,200.0	1.36	250.02	11,023.7	1,558.2	-592.7	1,666.6	0.00	0.00	0.00
11,300.0	1.36	250.02	11,123.6	1,557.4	-594.9	1,666.7	0.00	0.00	0.00
11,400.0	1.36	250.02	11,223.6	1,556.6	-597.2	1,666.8	0.00	0.00	0.00
11,500.0	1.36	250.02	11,323.6	1,555.8	-599.4	1,666.9	0.00	0.00	0.00
11,600.0	1.36	250.02	11,423.5	1,555.0	-601.6	1,666.9	0.00	0.00	0.00
11,700.0	1.36	250.02	11,523.5	1,554.1	-603.9	1,667.0	0.00	0.00	0.00
11,800.0	1.36	250.02	11,623.5	1,553.3	-606.1	1,667.1	0.00	0.00	0.00
11,900.0	1.36	250.02	11,723.5	1,552.5	-608.3	1,667.2	0.00	0.00	0.00
Cameo									
11,975.6	1.36	250.02	11,799.0	1,551.9	-610.0	1,667.3	0.00	0.00	0.00
12,000.0	1.36	250.02	11,823.4	1,551.7	-610.6	1,667.3	0.00	0.00	0.00
12,100.0	1.36	250.02	11,923.4	1,550.9	-612.8	1,667.4	0.00	0.00	0.00
12,200.0	1.36	250.02	12,023.4	1,550.1	-615.0	1,667.5	0.00	0.00	0.00
12,300.0	1.36	250.02	12,123.4	1,549.3	-617.3	1,667.6	0.00	0.00	0.00
12,400.0	1.36	250.02	12,223.3	1,548.5	-619.5	1,667.7	0.00	0.00	0.00
12,500.0	1.36	250.02	12,323.3	1,547.7	-621.7	1,667.8	0.00	0.00	0.00
Rollins									
12,525.7	1.36	250.02	12,349.0	1,547.4	-622.3	1,667.8	0.00	0.00	0.00
12,600.0	1.36	250.02	12,423.3	1,546.8	-624.0	1,667.9	0.00	0.00	0.00
12,700.0	1.36	250.02	12,523.2	1,546.0	-626.2	1,668.0	0.00	0.00	0.00
12,800.0	1.36	250.02	12,623.2	1,545.2	-628.4	1,668.1	0.00	0.00	0.00
12,900.0	1.36	250.02	12,723.2	1,544.4	-630.7	1,668.2	0.00	0.00	0.00
13,000.0	1.36	250.02	12,823.2	1,543.6	-632.9	1,668.3	0.00	0.00	0.00
TD at 13025.9									
13,025.9	1.36	250.02	12,849.0	1,543.4	-633.5	1,668.3	0.00	0.00	0.00

Database:	EDM 5000.1 Single User Db	Local Co-ordinate Reference:	Well ELU O13 FED 13A-13 496 - Slot 13A-13
Company:	Caerus Oil & Gas	TVD Reference:	RKB @ 8143.0usft (25')
Project:	Rio Blanco County, CO	MD Reference:	RKB @ 8143.0usft (25')
Site:	ELU O13 496 Pad	North Reference:	True
Well:	ELU O13 FED 13A-13 496	Survey Calculation Method:	Minimum Curvature
Wellbore:	Wellbore #1		
Design:	Design #4		

Design Targets

Target Name

- hit/miss target - Shape	Dip Angle (°)	Dip Dir. (°)	TVD (usft)	+N/-S (usft)	+E/-W (usft)	Northing (usft)	Easting (usft)	Latitude	Longitude
13A-13 - OHCR - plan hits target center - Point	0.00	0.00	8,594.0	1,577.6	-539.5	14,430,955.18	2,451,456.43	39.703037	-108.116711
13A-13 - PBHL - plan hits target center - Ellipse (radii L100.0 W50.0 on 250.00 azi)	0.00	0.00	12,849.0	1,543.4	-633.5	14,430,918.00	2,451,363.60	39.702944	-108.117044

Formations

Measured Depth (usft)	Vertical Depth (usft)	Name	Lithology	Dip (°)	Dip Direction (°)
4,092.5	4,017.0	Wasatch			
6,548.3	6,417.0	Wasatch G			
6,855.3	6,717.0	Fort Union			
8,769.7	8,594.0	Ohio Creek			
9,318.8	9,143.0	Williams Fork			
11,975.6	11,799.0	Cameo			
12,525.7	12,349.0	Rollins			

Plan Annotations

Measured Depth (usft)	Vertical Depth (usft)	Local Coordinates		Comment
		+N/-S (usft)	+E/-W (usft)	
500.0	500.0	0.0	0.0	Start Build 3.00
908.1	905.0	41.1	-14.1	Start 7453.6 hold at 908.1 MD
8,361.6	8,189.0	1,536.5	-525.4	Start Drop -3.00
8,769.7	8,594.0	1,577.6	-539.5	Start DLS 1.50 TFO 250.02
8,860.4	8,684.7	1,577.2	-540.5	Start 4165.5 hold at 8860.4 MD
13,025.9	12,849.0	1,543.4	-633.5	TD at 13025.9