

Legend

P&A'd Wellhead

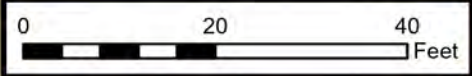
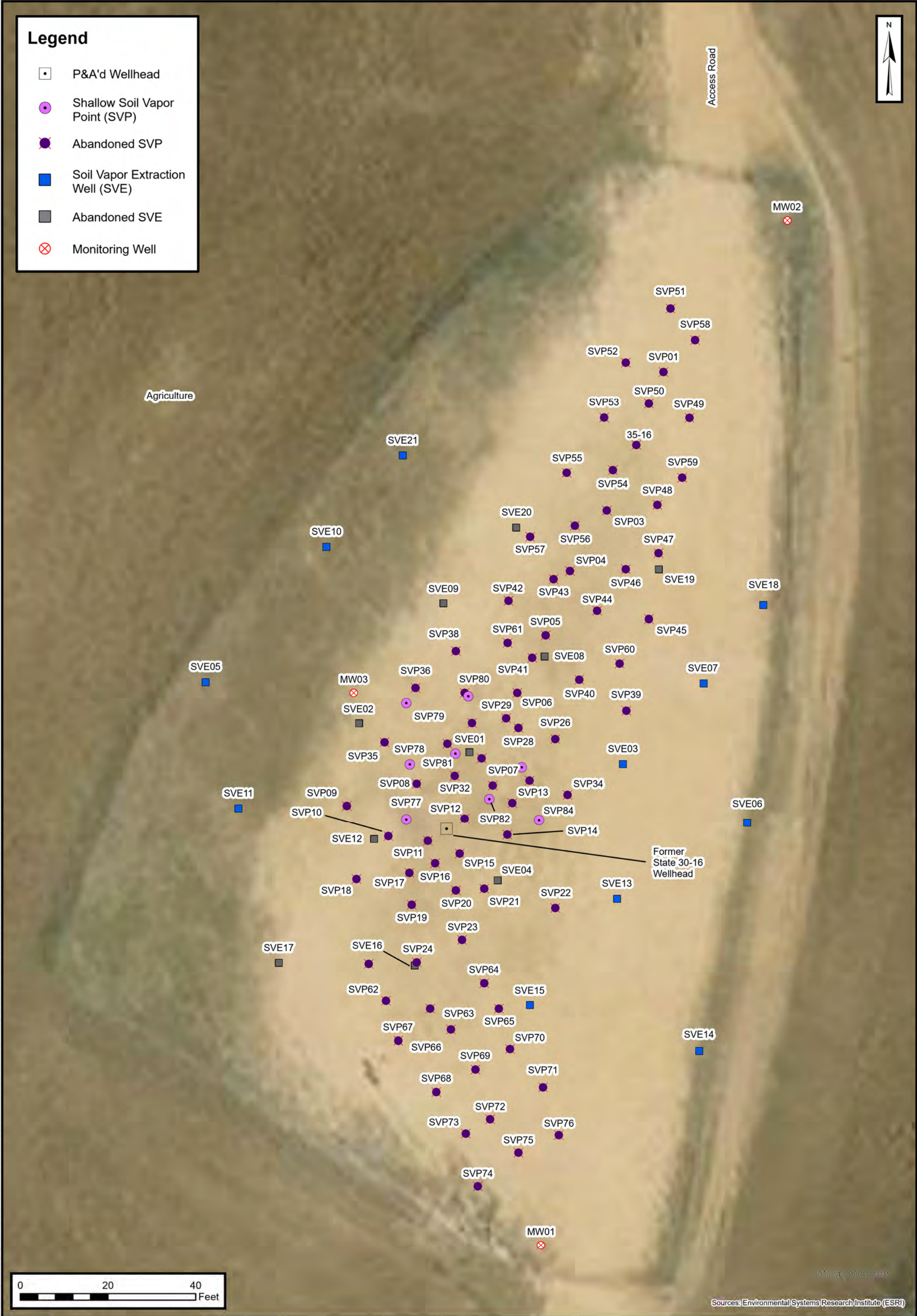
Shallow Soil Vapor Point (SVP)

Abandoned SVP

Soil Vapor Extraction Well (SVE)

Abandoned SVE

Monitoring Well



Site Map

State 30-16 Wellhead
Kerr-McGee Oil & Gas Onshore, LP
SWNW SEC 16-T1N-R68W
Weld County, CO
Project Number: 09A1417011

FIGURE

1