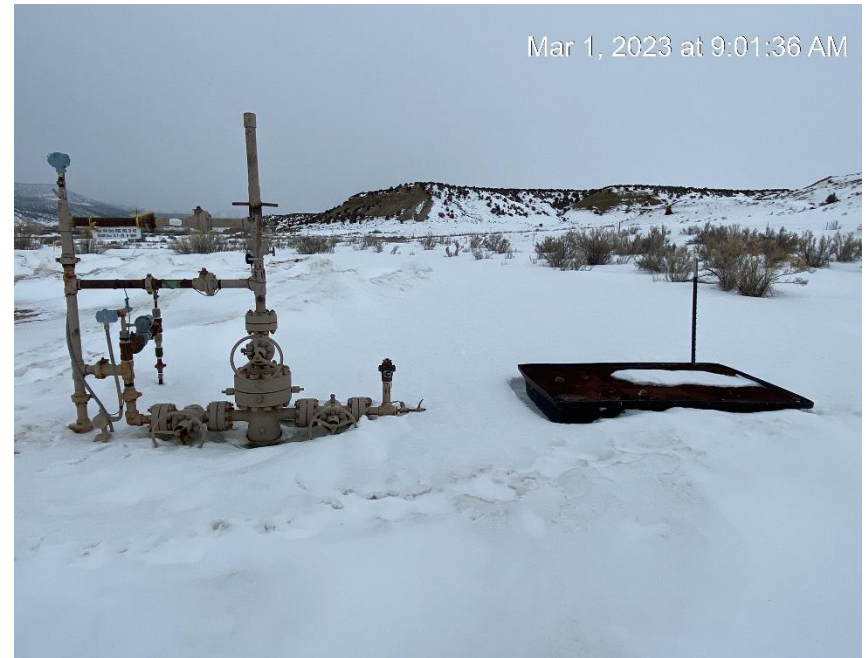


**KT Resources LLC
Ant Hill Unit RBC WG 31-42
Location #316335**



From entrance to location



Wellhead and unused equipment

**KT Resources LLC
Ant Hill Unit RBC WG 31-42
Location #316335**

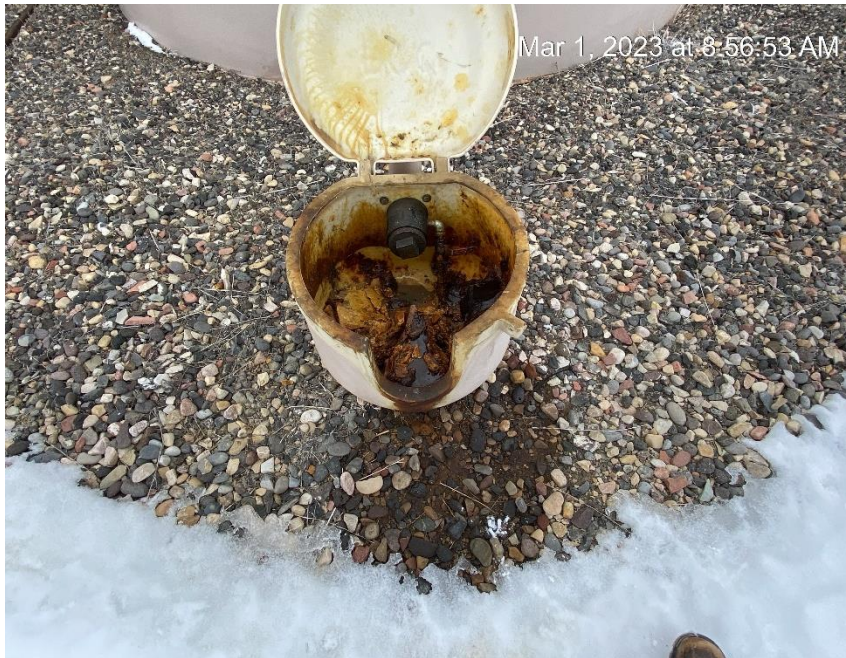


Earth berm repair on end of metal berm



Earth berm repair on end of metal berm

**KT Resources LLC
Ant Hill Unit RBC WG 31-42
Location #316335**



Stained soil



Stained soil below heater leak

**KT Resources LLC
Ant Hill Unit RBC WG 31-42
Location #316335**



Sign at tank battery



Unused equipment