

PADCO LLC, Wright 1
121-08867
Inspection #706700308
2/24&27/2023
Spill Inspection



2/24/2023 access
road, wind blowing
snow.

Colorado Oil and Gas Conservation Commission
39.85709, -103.31174, 4813.0ft, 265°
02/24/2023 08:42:32 AM



2/23/2023 photo
pumper.



Access road in front of
tank battery (west side)
has sprayed oil.

Colorado Oil and Gas Conservation Commission
39.86442, -103.31099, 4878.6ft, 11°
02/27/2023 08:06:16 AM



Edge of
sprayed oil
on the west
side of
location.

Colorado Oil and Gas Conservation Commission
39.86459, -103.31104, 4868.8ft, 71°
02/27/2023 08:06:44 AM



Colorado Oil and Gas Conservation Commission

39.86459, -103.31104, 4868.8ft, 71°

02/27/2023 08:06:44 AM



West
side of
tank
battery.

Colorado Oil and Gas Conservation Commission
39.86485, -103.31113, 4852.4ft, 98°
02/27/2023 08:07:31 AM



NW cor
of
treater
berms.

Colorado Oil and Gas Conservation Commission
39.86485, -103.31113, 4852.4ft, 98°
02/27/2023 08:07:31 AM



NW cor of
treater
berms.

Colorado Oil and Gas Conservation Commission
39.86485, -103.31105, 4858.9ft, 144°
02/27/2023 08:07:39 AM



North side
of treater
berms.

Colorado Oil and Gas Conservation Commission
39.86485, -103.31105, 4858.9ft, 144°
02/27/2023 08:07:39 AM



Inside west
side of
treater
berms.

Colorado Oil and Gas Conservation Commission
39.86483, -103.31097, 4862.2ft, 271°
02/27/2023 08:07:51 AM



Colorado Oil and Gas Conservation Commission

39.86485, -103.31105, 4858.9ft, 144°

02/27/2023 08:07:39 AM



North side
of treater
inside
berms.

Colorado Oil and Gas Conservation Commission
39.86481, -103.31094, 4865.5ft, 124°
02/27/2023 08:08:08 AM



East side of
treater
berm is
breached.
Winter
wheat field
behind
inspector
not
affected.

Colorado Oil and Gas Conservation Commission

39.8649, -103.31085, 4858.9ft, 195°

02/27/2023 08:08:26 AM



East side
of treater
berms.

Colorado Oil and Gas Conservation Commission
39.86484, -103.31072, 4858.9ft, 229°
02/27/2023 08:08:43 AM



Colorado Oil and Gas Conservation Commission
39.86483, -103.31072, 4862.2ft, 234°
02/27/2023 08:08:48 AM



East side
of treater
berms.

Colorado Oil and Gas Conservation Commission
39.86483, -103.31072, 4865.5ft, 89°
02/27/2023 08:09:05 AM



Colorado Oil and Gas Conservation Commission
39.86483, -103.31072, 4865.5ft, 89°
02/27/2023 08:09:05 AM



South
side of
treater
berms
and
north
side of
tank
battery
berms.

Colorado Oil and Gas Conservation Commission
39.8646, -103.31087, 4852.4ft, 345°
02/27/2023 08:23:12 AM



East pit
with oil
under ice
at outlet.

Colorado Oil and Gas Conservation Commission

39.86495, -103.31095, 4836.0ft, 356°

02/27/2023 08:12:26 AM



West pit.

Colorado Oil and Gas Conservation Commission
39.86499, -103.31102, 4839.2ft, 330°
02/27/2023 08:12:39 AM



PADCO LLC

(970-768-5659)

WRIGHT #1

SWNW SEC.22-T2S-R53W

WASHINGTON COUNTY, CO

Colorado Oil and Gas Conservation Commission

39.86567, -103.30957, 4858.9ft, 340°

02/27/2023 08:16:57 AM



Stained soil at
wellhead.

Colorado Oil and Gas Conservation Commission
39.86568, -103.30948, 4852.4ft, 346°
02/27/2023 08:16:46 AM



Colorado Oil and Gas Conservation Commission
39.86449, -103.31097, 4862.2ft, 47°
02/27/2023 08:20:44 AM



Colorado Oil and Gas Conservation Commission
39.86449, -103.31097, 4865.5ft, 100°
02/27/2023 08:20:36 AM



Colorado Oil and Gas Conservation Commission
39.86443, -103.31103, 4865.5ft, 63°
02/27/2023 08:20:24 AM



Colorado Oil and Gas Conservation Commission
39.86449, -103.31097, 4865.5ft, 100°
02/27/2023 08:20:36 AM



Colorado Oil and Gas Conservation Commission
39.86449, -103.31096, 4865.5ft, 93°
02/27/2023 08:21:33 AM



No bullplug or
cap on loadout.

Colorado Oil and Gas Conservation Commission
39.86449, -103.31096, 4865.5ft, 93°
02/27/2023 08:21:33 AM



Colorado Oil and Gas Conservation Commission
39.8646, -103.31087, 4872.0ft, 177°
02/27/2023 08:23:18 AM



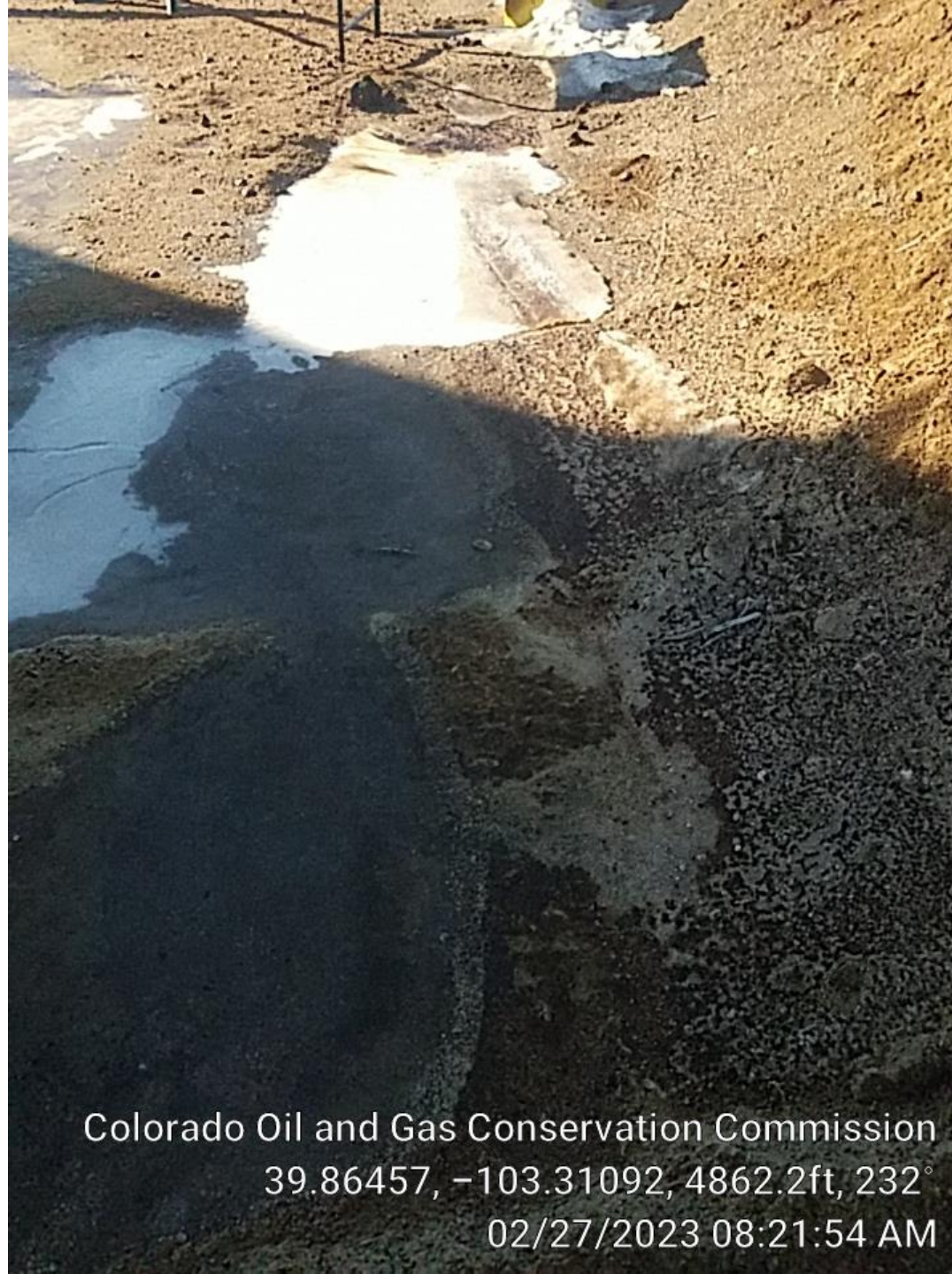
Colorado Oil and Gas Conservation Commission
39.86458, -103.31087, 4872.0ft, 326°
02/27/2023 08:23:24 AM



Colorado Oil and Gas Conservation Commission

39.86453, -103.31089, 4881.9ft, 2°

02/27/2023 08:23:32 AM



Oil sprayed
south from
treater inside
tank berms.

Colorado Oil and Gas Conservation Commission
39.86457, -103.31092, 4862.2ft, 232°
02/27/2023 08:21:54 AM



Colorado Oil and Gas Conservation Commission

39.86453, -103.31089, 4881.9ft, 2°

02/27/2023 08:23:32 AM



Colorado Oil and Gas Conservation Commission
39.86455, -103.31089, 4862.2ft, 201°
02/27/2023 08:22:01 AM



Colorado Oil and Gas Conservation Commission
39.86455, -103.31089, 4862.2ft, 201°
02/27/2023 08:22:01 AM



Colorado Oil and Gas Conservation Commission
39.86452, -103.31086, 4872.0ft, 211°
02/27/2023 08:22:10 AM



Animal
hole on
east side
of tank
berms.

Colorado Oil and Gas Conservation Commission
39.86452, -103.31082, 4868.8ft, 118°
02/27/2023 08:22:22 AM



Colorado Oil and Gas Conservation Commission
39.86452, -103.31082, 4868.8ft, 118°
02/27/2023 08:22:22 AM



Colorado Oil and Gas Conservation Commission
39.86457, -103.3108, 4842.5ft, 171°
02/27/2023 08:23:00 AM