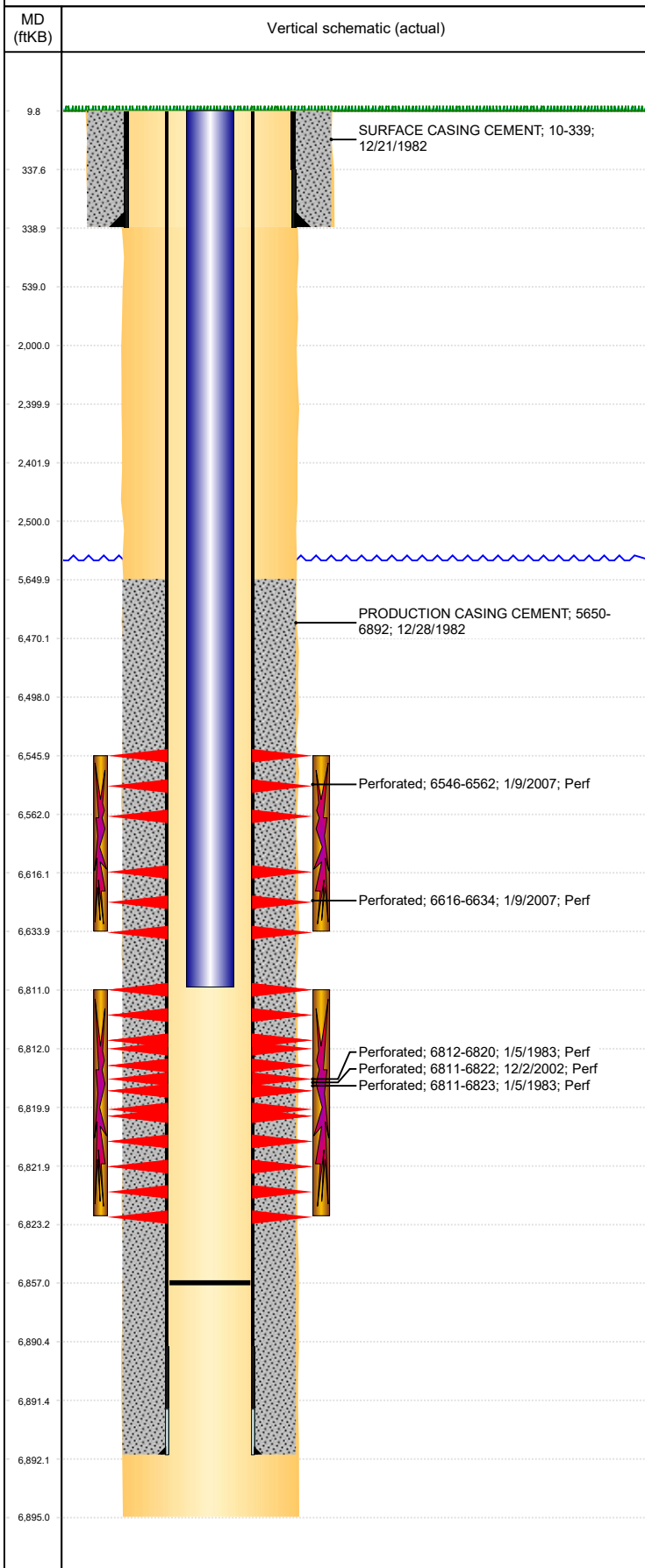




# P&A Wellbore For State

Well Name: CONRAD 01 (FKA HERBST 02)

Land, Original Hole, 2/22/2023 12:00:36 PM



Well Header									
Surface UWI 0512310965			Business Unit Rockies		Gov Auth Dist			Prod Tree Loc Land	
Orig. KB to Gnd (ft) 10.00		Original Spud Date 12/21/1982		Abandon Date		Well Sub-Status PR			High... N
Comment VERY LIMITED DATA IN THE FILE FOR THE FIRST FRAC OF THE CODELL.									
Surface Location (Congressional)									
Qtr 3 NE	Qtr 4 NW	Section 22	Twonshp 4	Twonsh... N	Range 64	Rng E/... W	Latitude (°) 40.30337662 6	Longitude (°) -104.539140146	
Wellbore Sections									
Section Des			Hole Size (in)			Act Top (ftKB)		Act Btm (ftKB)	
SURFACE			12 1/4			10.0		339.0	
PRODUCTION			8 5/8			339.0		6,895.0	
Casing Strings									
Csg Des			Run Date		OD (in)	Wt/Len (lb/ft)	Grade	Top Depth (MD) (ftKB)	Set Depth (MD) (ftKB)
Surface			12/21/1982		8 5/8	24.00		10	339
Production Casing			12/28/1982		4 1/2	11.60		10	6892
Cement									
Des					Start Date		Top (ftKB)		Btm (ftKB)
SURFACE CASING CEMENT					12/21/1982		10.0		339.0
PRODUCTION CASING CEMENT					12/28/1982		5,650.0		6,892.0
Zone Statuses									
Zone Name		Status Date		Status	Fluid Type	Job			Prod Method
CODELL		12/7/2002		PR		RE-FRAC, 12/2/2002 00:00			Flowing
CODELL		3/12/2007		PR		COMMINGLE ZONES, 3/5/2007 00:00			Flowing
NIOBRARA		2/12/2007		PR		RECOMPLETION, 2/10/2007 00:00			Flowing
NIOBRARA		3/12/2007		PR		COMMINGLE ZONES, 3/5/2007 00:00			Flowing
Perforation Data									
Linked Zone			Explosive Type	Entered Shot Total		Top (ftKB)		Btm (ftKB)	Date
NIOBRARA, Original Hole				96		6,546.0		6,562.0	1/9/2007
NIOBRARA, Original Hole				108		6,616.0		6,634.0	1/9/2007
CODELL, Original Hole				44		6,811.0		6,822.0	12/2/2002
CODELL, Original Hole				48		6,811.0		6,823.0	1/5/1983
CODELL, Original Hole				16		6,812.0		6,820.0	1/5/1983
Stimulation Intervals									
Zone				Start Date		Top (ftKB)		Btm (ftKB)	
NIOBRARA, Original Hole				2/10/2007		6,546.0		6,634.0	
CODELL, Original Hole				1/5/1983		6,811.0		6,823.0	
CODELL, Original Hole				12/2/2002		6,811.0		6,823.0	
Other In Hole									
Run Date		Des			Make		OD (in)	Top (ftKB)	Btm (ftKB)
Logs									
Date		Type					Depth Top (MD) (ftKB)		Btm (ftKB)
12/28/1982		COMPENSATED DENSITY					6,490		6,890.0
12/28/1982		INDUCTION					330		6,889.0
1/8/2007		CEMENT BOND					5,557		6,666.0
Plug Back Total Depths									
Date		Type			Com				PBSD (ftKB)
1/8/2007		FILL			DEPTH LOGGER ON CBL				6,666
3/6/2007		FILL			CLEAN OUT SAND TO 6857'				6,857